



[Home](#) » [SUB-ZERO](#) » **SUB-ZERO Built-In BI Series Ice Maker Instruction Manual** 

SUB-ZERO Built-In BI Series Ice Maker



Contents [[hide](#)]

[1 ICEMAKER SYSTEM INFORMATION](#)

[2 ICEMAKER COMPONENTS](#)

[3 ICEMAKER OPERATION](#)

[4 ICEMAKER FAULT TESTING](#)

[5 Documents / Resources](#)

[5.1 References](#)

ICEMAKER SYSTEM INFORMATION

The operation of the icemaker used in the Built-In Series units is not complex, but understanding its components and operation cycle will assist a Service Technician in make proper diagnosis of problems.



WARNING

TO AVOID ELECTRIC SHOCK, ALWAYS DISCONNECT ELECTRICAL POWER TO UNIT WHEN SERVICING ICEMAKER.

NOTES:

- Water fill time/volume in the BI Series is controlled by the electronic control 's microprocessor. The microprocessor observes the volumetric flow through the water valves via a low DC voltage signal from the flow meter, with every one revolution of the turbine inside the flow meter equaling 0.02 oz (0.5 ml) The electronic control instructs the valve to remain open long enough to deliver approximately 3.5 oz (105 ml) of water. This timeframe will vary depending on water pressure.
- Adjusting the water fill adjusting screw at the icemaker will have no effect on water fill time/volume.
- The "ICE MAKER" key on the control panel activates the icemaker system. If the ice cube icon is not displayed on the LCD, the icemaker system is OFF.
- To allow ice to freeze fully and reduce effects of low water pressure, the electronic control disables the icemaker system for 45 minutes after each ice harvest.
- Power to the freezer lights, is monitored to help control icemaker operation. If the

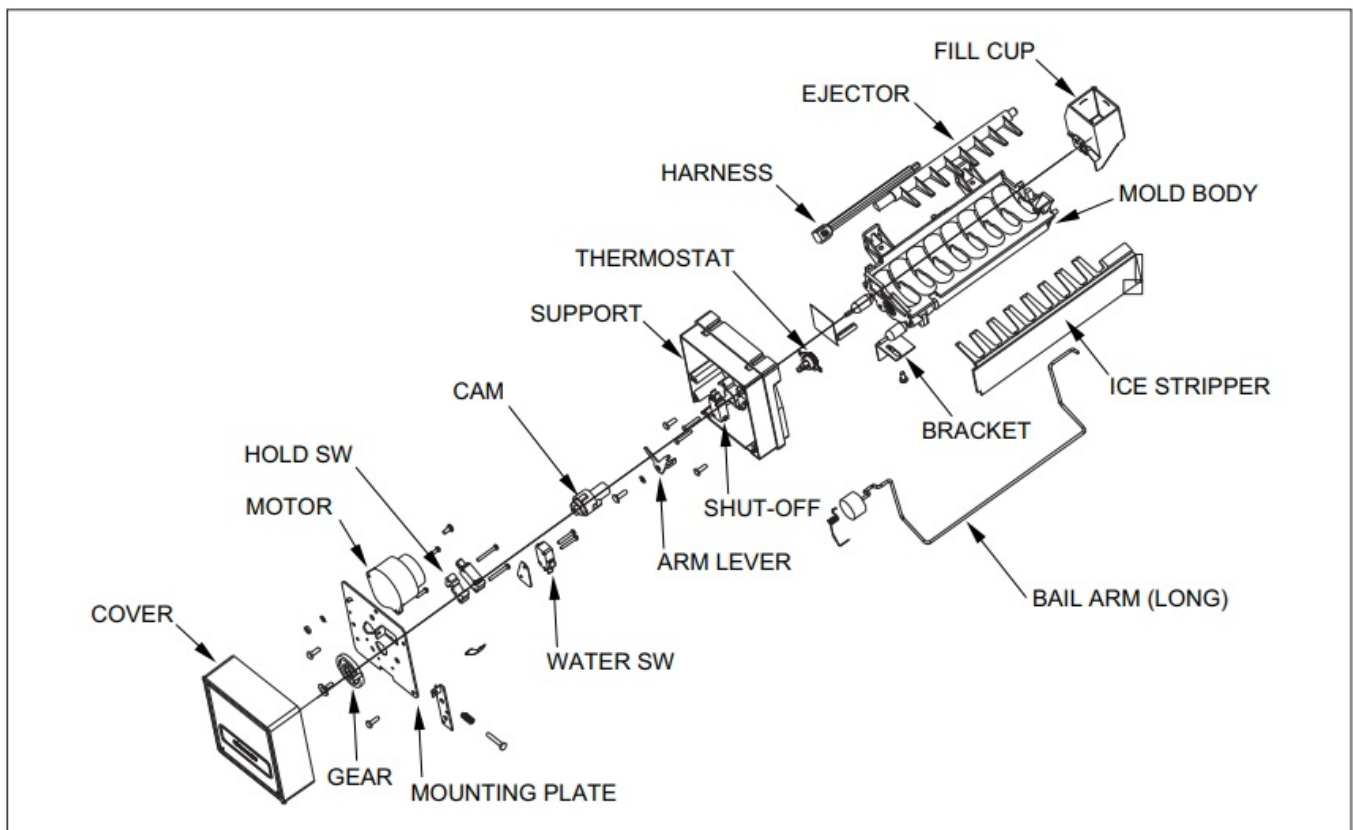
freezer door is open, power to the icemaker is interrupted.

- The icemaker system is disabled when the unit is in Sabbath Mode.

ICEMAKER COMPONENTS

Following are descriptions that explain the function of each icemaker component. The components are diagrammed in Figure 5-1 on the next page.

Figure 5-1. Diagram of Icemaker Components



(For reference only. Individual components are not available for Service. If problems with the icemaker are discovered, the entire icemaker must be replaced)

Support – The support is the housing around the electrical components and wire connections. The support is attached to the ice mold.

Mounting Plate – The drive motor, holding switch, water valve solenoid switch, timing gear, timing cam and water fill adjusting screw are attached to the metal mounting plate. The mounting plate is then attached to the support.

Drive Motor – AC voltage supplied to the drive motor causes the motor to operate. The motor has a single output shaft with a small gear. The motor gear drives/spins the timing

gear.

Timing Gear – The timing gear is driven/spun by the drive motor gear and is attached to the timing cam.

Timing Cam – The timing cam is attached to the timing gear and the ice ejector is inserted into the center of the timing cam. As the timing cam rotates, high and low spots on the cam operate the water valve solenoid switch and the holding switch. The timing cam also moves the lever arm side to side and rotates the ice ejector.

Ice Mold – The ice mold is where the eight crescent shaped ice cubes are formed.

Mold Heater – The mold heater uses 165 watts to thaw the ice free from the mold.

Ice Ejector – The drive end of the ice ejector is “D” shaped to fit into the “D” shaped hole in the timing cam.

It has eight blades which rotate and sweep the ice from the mold cavities during the ejection phase of the cycle.

Ice Stripper – The stripper is attached to the dumping side of the mold, serving as a decorative side cover and it also prevents ice from falling back into the mold.

Bearing / Inlet – The bearing / inlet is attached to the ice mold, opposite the support. Water enters the bearing / inlet and is directed to the ice mold. The bearing/inlet also supports the ice ejector at the end opposite the timing cam.

Thermostat – The thermostat is a single-pole, single throw, bi-metal switch. At 15°F (-9°C) \pm 3° it closes, starting the ice ejection phase.

Thermal-Mastic – A substance similar in appearance to grease that is applied between the thermostat and the ice mold. Its purpose is to increase thermal conductivity between the mold and the thermostat.

Lever Arm and Shut-off Arm – The lever arm is moved side to side by two revolutions of the timing cam. As it moves, it raises and lowers the shut-off arm and operates the shut-off switch to control the quantity of ice production. If the shut-off arm comes to rest

on top of the ice in the storage bin during either revolution, the shut-off switch will remain open, stopping ice production at the end of that revolution.

Water Valve Solenoid Switch – A single-pole, double throw type switch that allows electricity to the water valve solenoid, opening the valve, during the fill cycle.

Holding Switch – A single-pole, double-throw type switch that assures completion of a revolution once the icemaker has been energized.

Shut-off Switch – A single-pole, double-throw type switch that stops ice production when the ice bin is full.

TCO (Thermal Cut Out) – The TCO is thermal protection device in the wire harness that would open in the event of mechanical failure, thus protecting against over heating. (The TCO is not shown in diagram.)

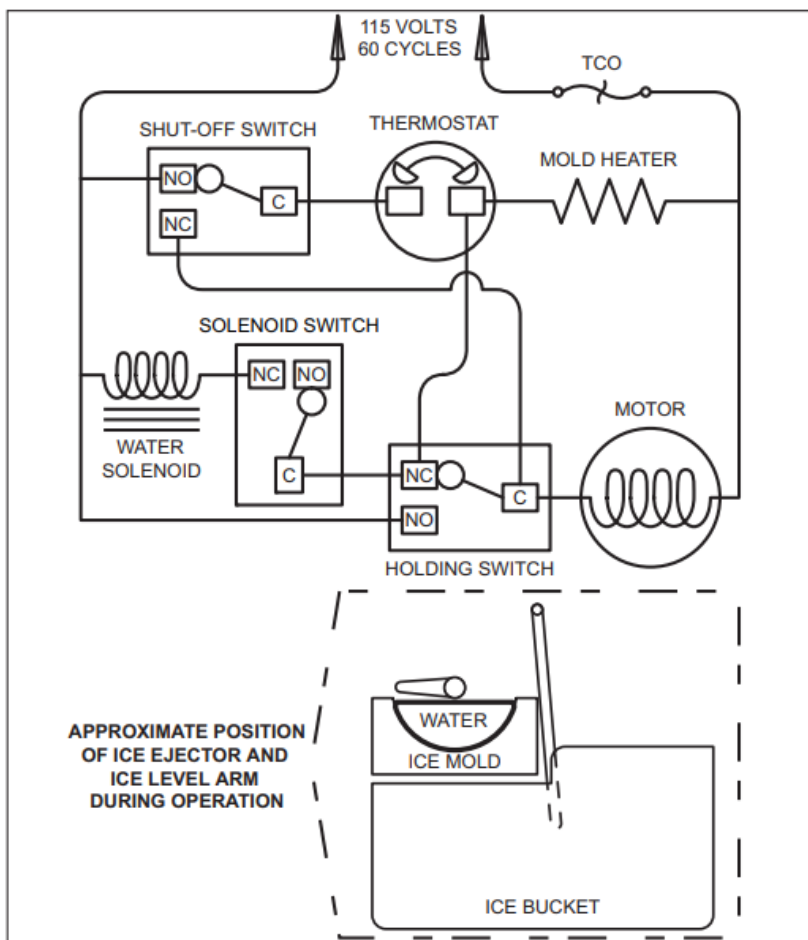
ICEMAKER OPERATION

The following series of electrical schematics illustrate a typical icemaker cycle of operation. Below each schematic is a diagram indicating the approximate location of the ice ejector and ice level arm during the phase the schematic indicates.

Freeze Phase of Ice Making Cycle (See Figure 5-2)

- The ice mold is filled with water.
- The thermostat is open.
- No icemaker components are energized.

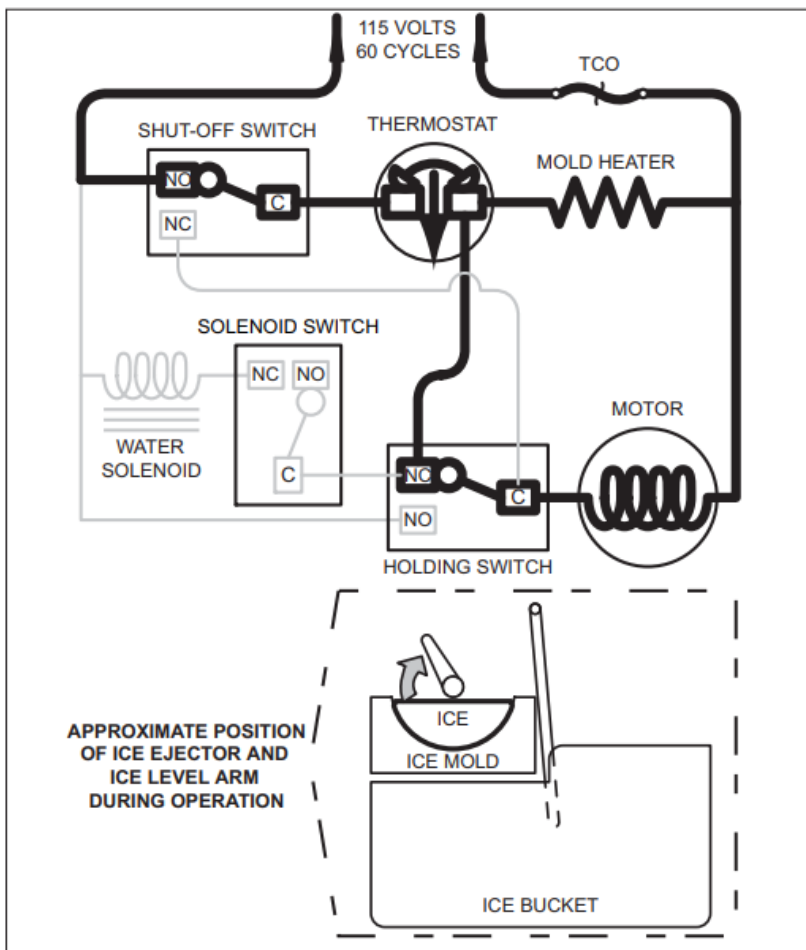
Figure 5-2. The Freeze Phase



Start of the First Revolution (See Figure 5-3)

- The water in the ice mold has turned to ice.
- At 15°F (-9°C) ± 3° the thermostat closes.
- The mold heater is energized through the thermostat.
- The drive motor is started through the thermostat and “normally closed” terminal of the holding switch.
- The ice ejector begins to turn and the shut-off arm begins to rise.

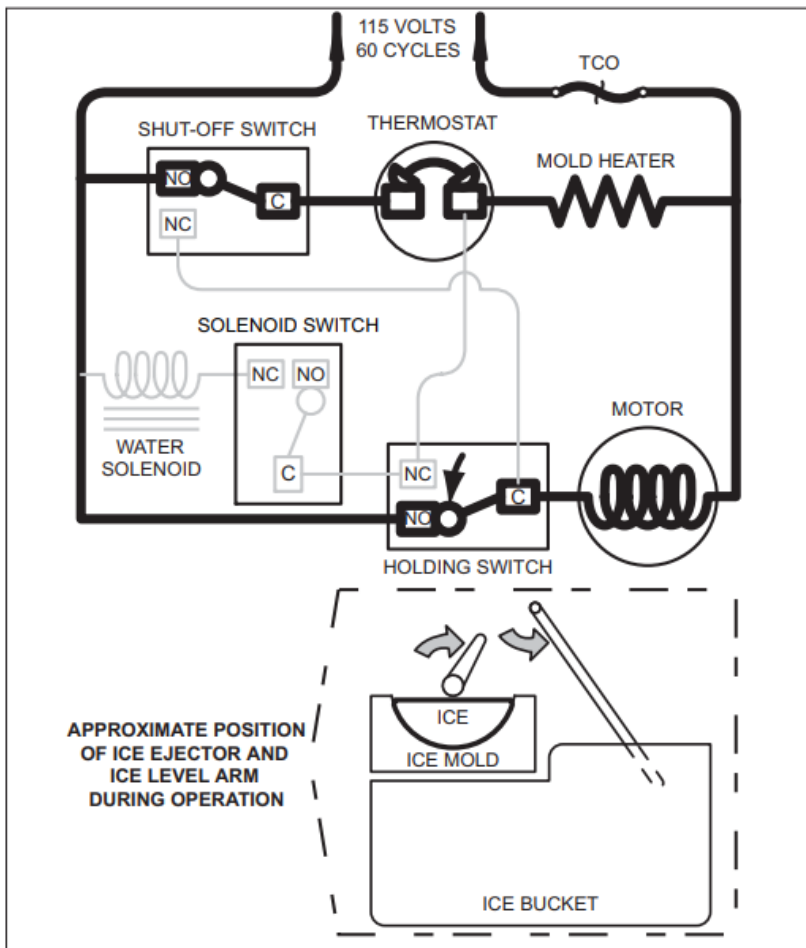
Figure 5-3. Start of First Revolution



First Revolution Continued (See Figure 5-4)

- The holding switch is tripped by the timing cam to “normally open” thus holding power to the motor.
- The mold heater remains energized through the thermostat.
- The shut-off arm begins to rise.

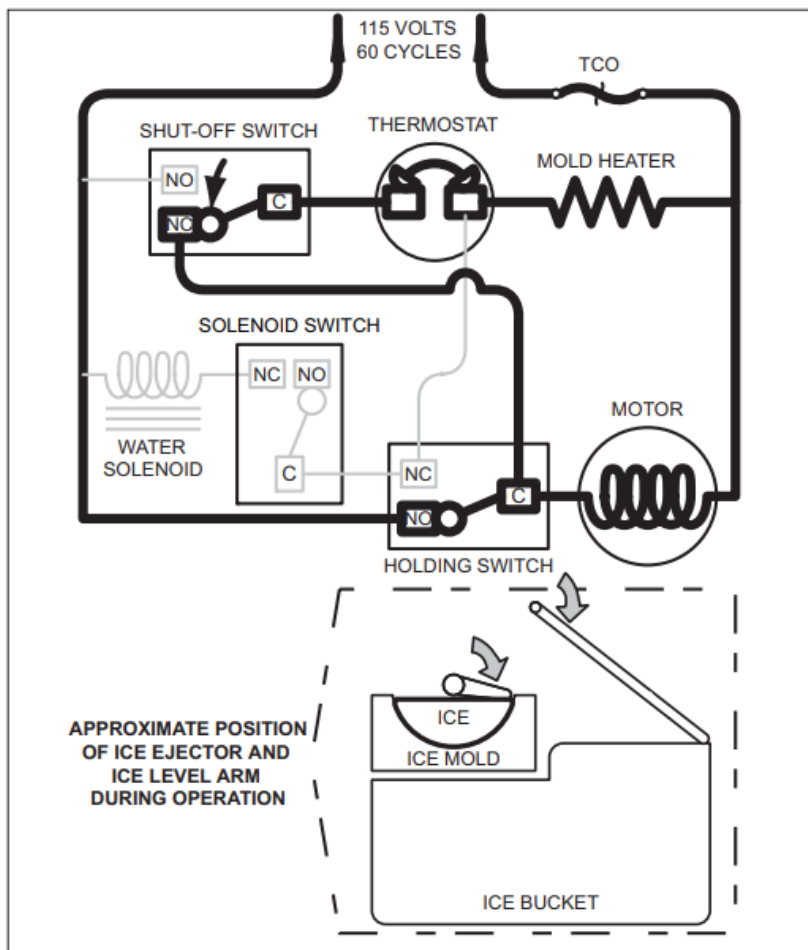
Figure 5-4. First Revolution Continued



First Revolution Continued (See Figure 5-5)

- The ice ejector reach the ice in the mold.
- The ice releases from the mold as the ejector blades begin to rotate the cubes out.
- The drive motor remains energized through the holding switch.
- The mold heater remains energized through the thermostat.
- As the shut-off arm rises, the shut off switch is tripped to “normally closed”, and then the shut-off arm begins to lower.

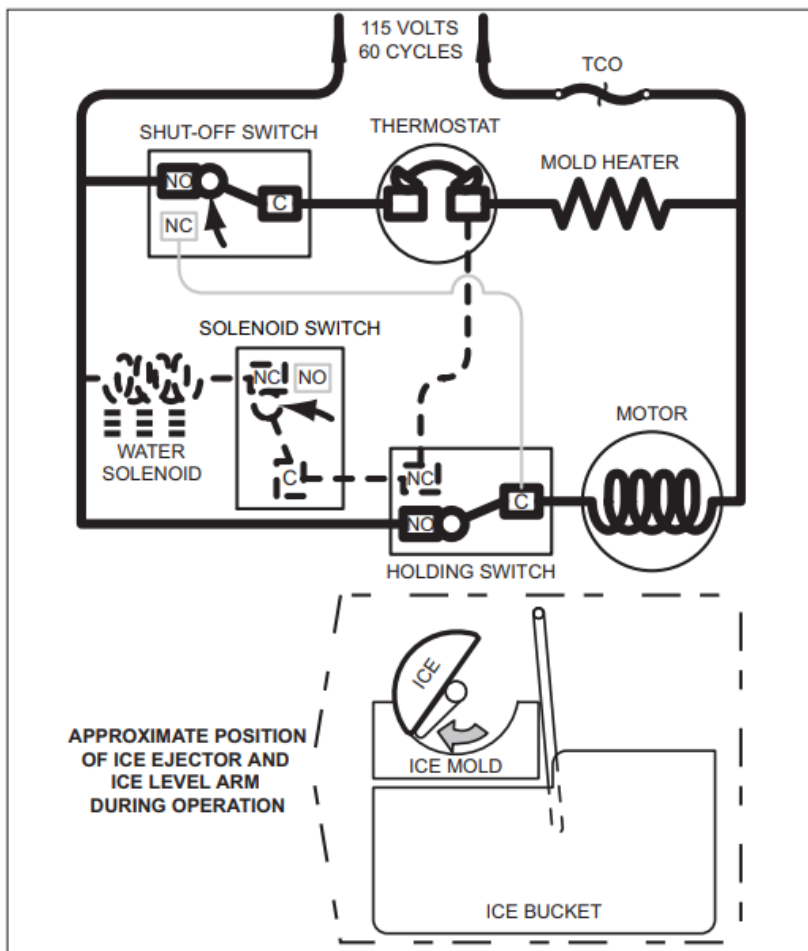
Figure 5-5. First Revolution Continued



First Revolution Continued (See Figure 5-6)

- The ice has released from the mold.
- The motor remains energized through the holding switch.
- The shut-off arm is lowered and the shut off switch is tripped to “normally open”.
- The water valve solenoid switch is tripped by the timing cam, but the solenoid is not energized because the thermostat is still closed and energizing the mold heater.
(Electric current follows the path of least resistance.)

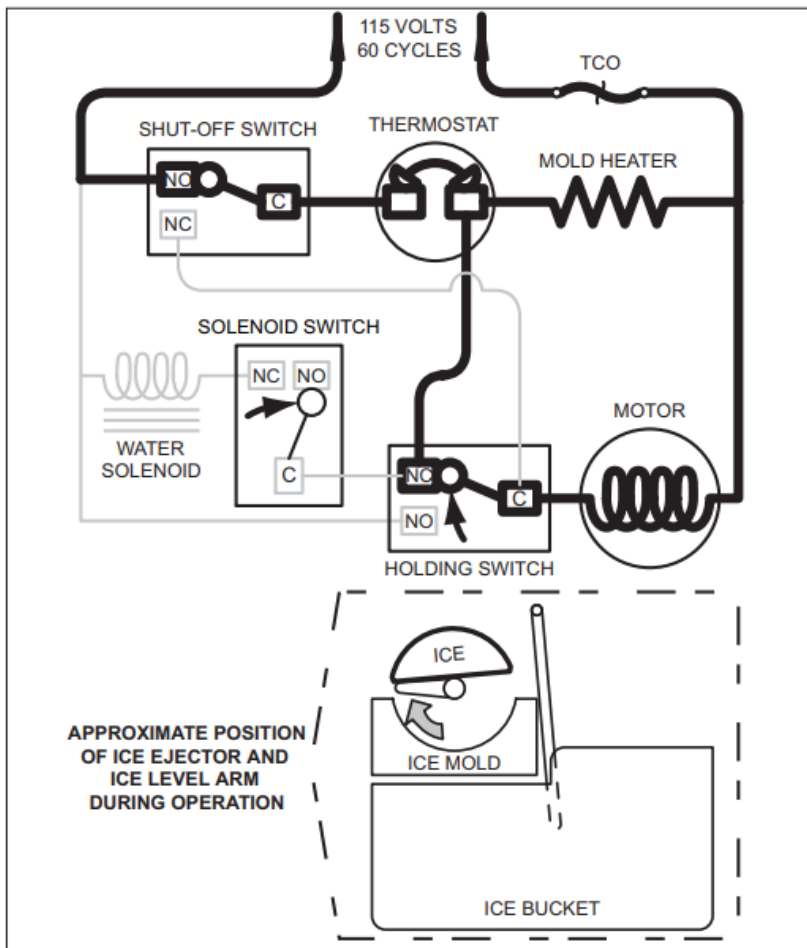
Figure 5-6. First Revolution Continued



End of First Revolution (See Figure 5-7)

- The water valve solenoid switch is tripped by the timing cam back to “normally open.”
- The timing cam trips the holding switch to “normally close,” which ends the first revolution, but the thermostat is still closed, so the motor is again started.
- The mold heater remains energized through the thermostat.

Figure 5-7. End of First Revolution

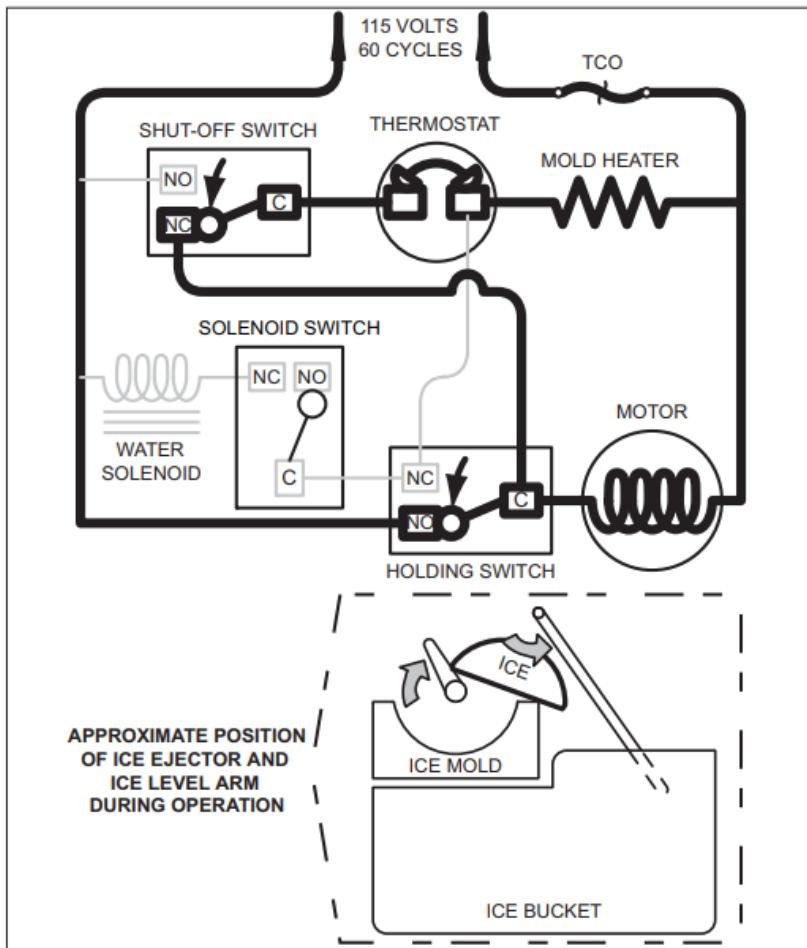


NOTE: If thermostat is open at this time the motor will stop. Thermostat must be closed/cold enough; 15°F (-9°C) ± 3° or less.

Start of Second Revolution:(See Figure 5-8)

- The water valve solenoid switch is tripped by the timing cam back to “normally open.”
- The timing cam trips the holding switch to “normally close,” which ends the first revolution, but the thermostat is still closed, so the motor is again started.
- The mold heater remains energized through the thermostat.

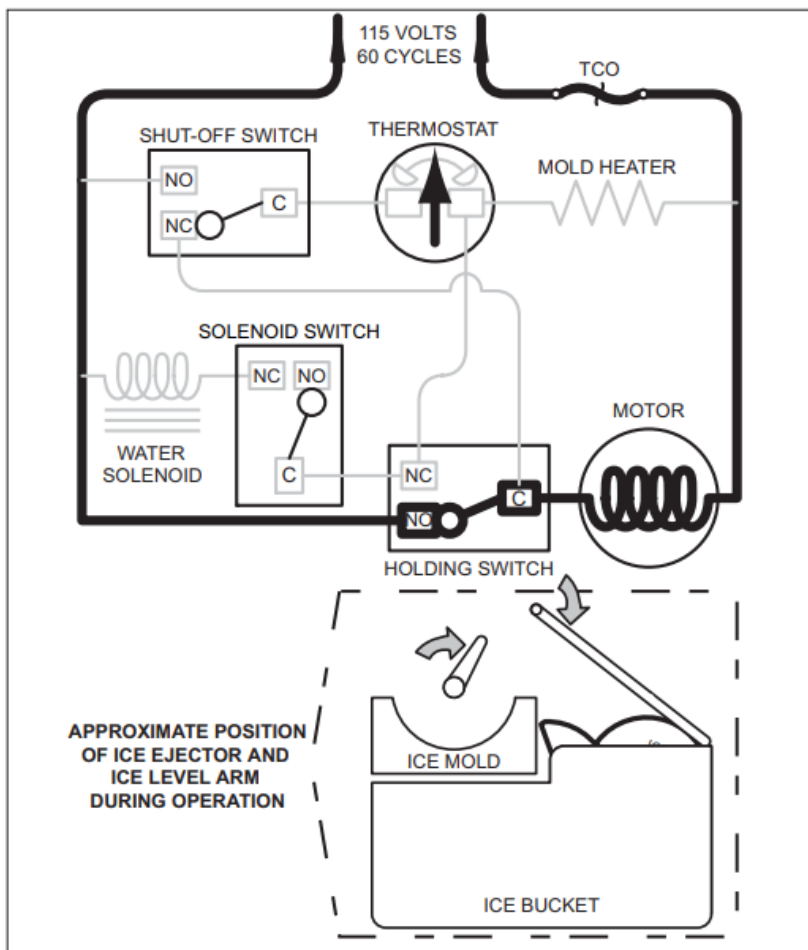
Figure 5-8. Start of Second Revolution



Second Revolution Continued (See Figure 5-9)

- The mold heater has warmed the thermostat, so the thermostat opens, and the mold heater is de-energized.
- If the shut-off arm comes to rest on top of the ice in the storage bin (as illustrated), so the shut-off switch will remain in the “normally closed” position.
- The motor remains energized through the holding switch.

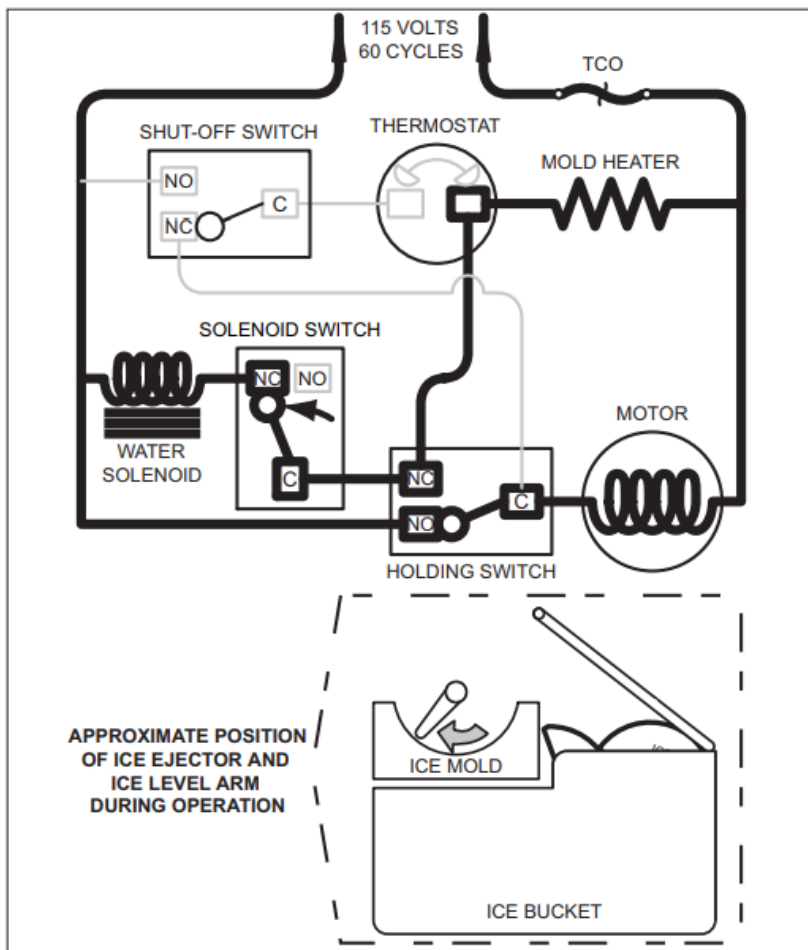
Figure 5-9. Second Revolution Continued



Second Revolution Continued (See Figure 5-10)

- The water valve solenoid switch is tripped by the timing cam. This time the solenoid is energized because the thermostat is open. The water solenoid is open for approximately seven seconds, filling the ice mold with water.
- the mold heater is energized through the solenoid switch and holding switch.

Figure 5-10. Second Revolution Continued

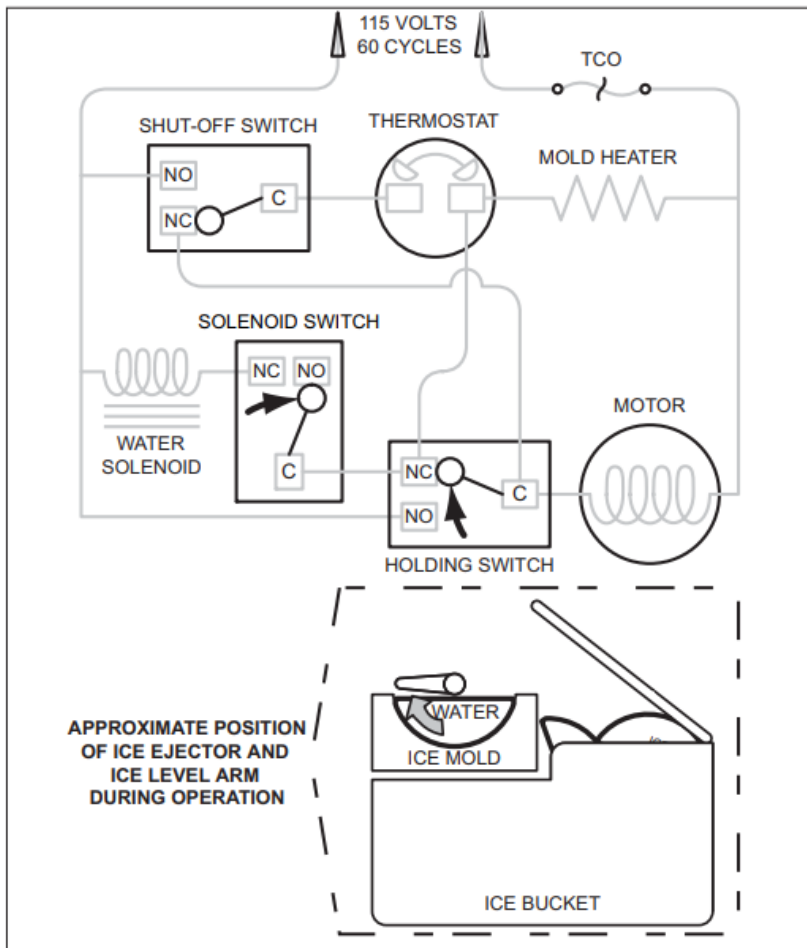


End of Ice making Cycle (See Figure 5-11)

- The water valve solenoid switch is tripped by the timing cam back to “normally open” ending the water fill.
- The timing cam trips the holding switch to “normally close,” which ends the second revolution.
- The thermostat is still open, so it does not start the drive motor.
- If the shut-off arm has come to rest on top of the ice in the storage bin (as illustrated), the shut-off switch remains in the “normally closed” position.

This interrupts power from reaching the thermostat, until sufficient ice has been removed from the storage bin allowing the shut-off arm to lower.

Figure 5-11. End of Ice Making Cycle



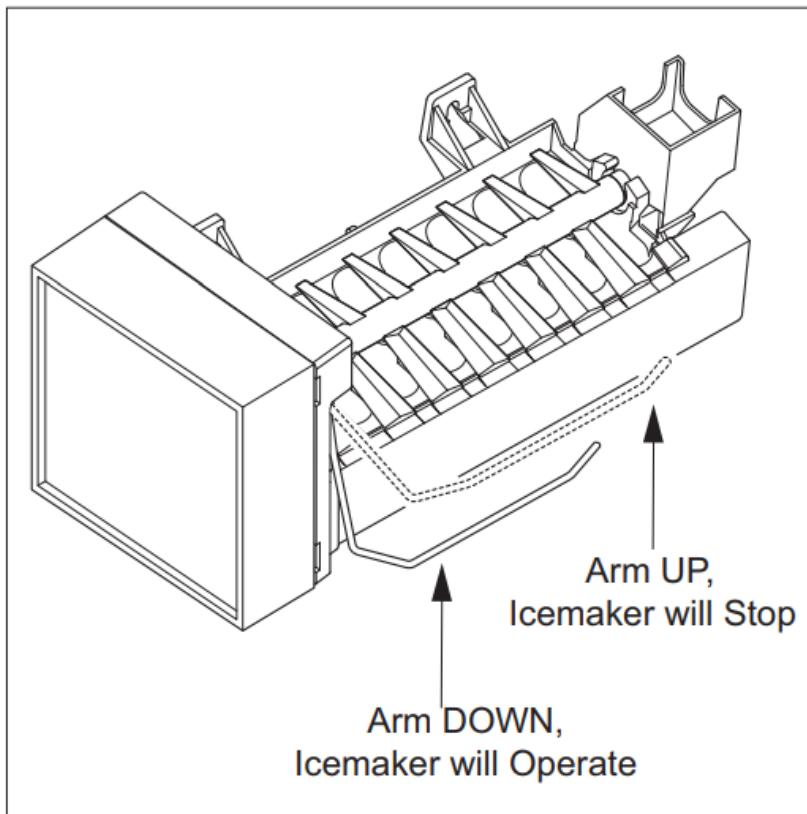
NOTE: To allow ice to freeze fully and reduce effects of low water pressure, the electronic control system disables the icemaker system for 45 minutes after each ice harvest.

MANUALLY STOPPING ICE PRODUCTION

Ice production can be manually stopped two ways:

1. Press the "ICE MAKER" key on the control panel so that the ice cube icon is not displayed on the LCD.
2. Position the ice-level/shut-off arm in the up/OFF position (See Figure 5-12).

Figure 5-12. Stopping Icemaker



MANUALLY STARTING THE ICEMAKER

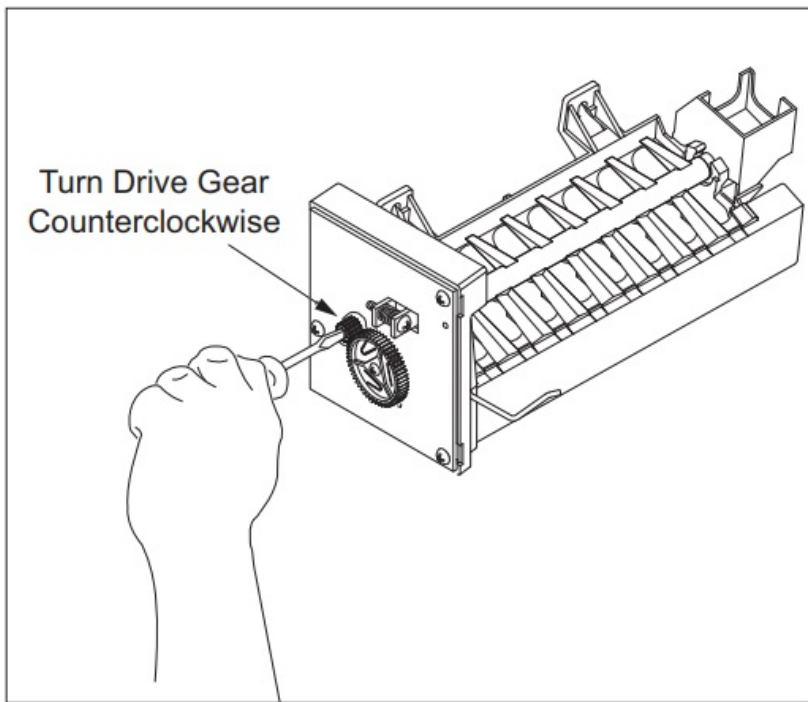
NOTE: To allow ice to freeze fully and reduce effects of low water pressure, the electronic control disables the icemaker system for forty-five (45) minutes after each ice harvest. To bypass this 45 minute dwell for service purposes, press the “ICE MAKER” key at the control panel to switch the system OFF, then again to switch it back ON.

Manual Start Procedure:

NOTE: To help avoid ice production when the ice bucket may be out of place, there is a three (3) minute delay of icemaker operation when the freezer door is opened, then closed, unless the unit is set for MAX ICE production. Before attempting to manually start the icemaker, press the MAX ICE key on control panel to initiate the MAX ICE feature and press the door switch, then:

1. Pry the icemaker front cover from the support using a flat-blade screwdriver or coin.
2. With a flat-blade screwdriver, turn the drive gear counterclockwise until the holding switch is activated, completing the circuit to the drive motor (this will be about a 1/8 turn). (See Figure 5-13) The icemaker will then complete its cycle automatically.

Figure 5-13. Manually Start Icemaker



NOTE: If after 1/4 turn the icemaker is not running on its own, it may be in the 45 minute dwell period, the MAX ICE feature has not been initiated, the door switch is not being pressed closed, or there is an electrical or mechanical problem.

ICEMAKER FAULT TESTING

Bypass 45-minute dwell by pressing ICE MAKER key to OFF, then again to ON. Now, depress the freezer light switch and manually start icemaker by turning driver gear counter-clockwise with screwdriver.

1. If icemaker starts & finishes cycle:

(NOTE: If $>15^{\circ}\text{F}$, icemaker will only complete 1 revolution.)

- **a.** Visually inspect electrical connections at icemaker & valve. Repair if necessary.
- **b.** Check valve operation with test cord, if doesn't open, replace valve.
- **c.** Check thermostat. (Open: $48^{\circ}\text{F} \pm 6^{\circ}$, Close: $15^{\circ}\text{F} \pm 3^{\circ}$). Replace icemaker if defective.
- **d.** With icemaker in park position, check solenoid switch terminals "C" & "NO" for continuity. With ejector between 8:00 & 10:00 position, check solenoid switch terminals "C" & "NC" for continuity. If no continuity for either terminal check, replace icemaker.

2. If icemaker starts but does not finish cycle:

- **a.** With icemaker in park position check holding switch terminals "C" & "NC" for

continuity. Then with icemaker ejector between 10:00 & 12:00, check holding switch terminals “C” & “NO” for continuity. If no continuity for either terminal check, replace icemaker. (Refer to enclosed wiring diagram)

- **b.** With icemaker in park position check shut-off switch terminals “C” & “NO” for continuity. With ejector between 12:00 & 2:00 check shut-off switch terminals “C” & “NC” for continuity. If no continuity for either terminal check, replace icemaker.
- **c.** Check mold heater for 75-85Ω. If outside range, heater is bad, replace icemaker. If heater checks OK, thermostat is bad, replace icemaker.

3. If icemaker motor does NOT start:

- **a.** Lower shutoff arm
- **b.** Check motor operation with test cord. If motor doesn't run, replace icemaker.
- **c.** Check power to and from icemaker rocker switch (if present). Reconnect or repair connection or replace switch as necessary.
- **d.** With MAX ICE feature initiated and door switch pressed, check for power from control board. If power is present check & repair electrical connections between control board to icemaker. If no power at control board, replace control board.

QUICK REFERENCE

- **Water Fill Time:** May vary by water pressure
- **Fill Tube Heater Ohm:** 2850-3890Ω
- **Mold Heater Ohm:** 75-85Ω
- **Water Valve Ohm:** 160-165Ω
- **Thermostat Open/Close – Open:** 48°F ±6° Close: 15°F ±3
- **Water Pressure Needed:** 30 -120 psi constant

NOTE: This is a filtered water specification as non-filtered systems are rated at 20-100 psi.

ICEMAKER TROUBLESHOOTING

No / Slow Ice Production

1. Ice maker system switched OFF. Switch system ON.
2. Shut off arm in up/OFF position. Move to ON position.

3. Freezer too warm. Check temp's & see troubleshooting guide in service manual.
4. Poor airflow over icemaker. Remove obstructions.
5. Ice cube jam. Remove ice.
6. Water froze in inlet tube. Remove ice from tube. Check for power from control board to fill tube heater; Fill tube heater = 2850-3890Ω.
7. Water supply not constant 20-120 psi. Instruct customer.
8. Water line to unit pinched/kinked/clogged. Repair line.
9. Saddle valve not installed correctly. Reposition.
10. Saddle valve not fully open. Open valve fully.
11. Icemaker wire/connections loose/broken. Repair wiring.
12. Water valve wire/connections loose/broken. Repair wiring.
13. Defective water valve. Valve =160-165Ω. Replace valve.
14. Thermostat wire/connections loose/broken. Repair wiring.
15. TCO overheat or short. Fix cause or replace icemaker.
16. See Icemaker Fault Testing.

No Water Fill

1. Water supply switched OFF. Switch supply water line ON.
2. Water line to unit pinched/kinked/clogged. Repair line.
3. Saddle valve not installed correctly to supply line.
Reposition.
4. Water froze in inlet tube. Remove ice from tube. Check for power from control board to fill tube heater; Fill tube heater = 2850-3890Ω.
5. Water valve wire/connections loose/broken. Repair wiring.
6. Defective water valve. Valve =160-165Ω. Replace valve.

Overflows / Ice Block Forms in Bucket / Oversized Cubes

1. Icemaker not level. Level icemaker.
2. Unit not level. Level unit
3. Water supply not constant 20-120 psi. Instruct customer.
4. Water froze in inlet tube. Remove ice from tube. Check for power from control board to fill tube heater; Fill tube heater = 2850-3890Ω.
5. Defective water valve. Valve =160-165Ω. Replace valve.

6. Improper fill signal from control board; replace control board.

Ice Cubes Hollow or Small


- 1. Icemaker not level. Level icemaker.
- 2. Unit not level. Level unit
- 3. Water supply not constant 20-120 psi. Instruct customer.
- 4. Too little thermal mastic on thermostat. Add thermal mastic.
- 5. Defective thermostat (Open = 48°F ±6°, Close = 15°F ±3°).
Replace icemaker.
- 6. Improper fill signal from control board; replace control board.

Too much Ice

- 1. Shut off arm/linkage bent, broken or disconnected. Repair, replace o reconnect arm/linkage.
- 2. If ejector blades rotate with arm in up/OFF position = Icemaker faulty. Replace icemaker.



Documents / Resources

	SUB-ZERO Built-In BI Series Ice Maker [pdf] Instruction Manual Built-In BI Series, Built-In BI Series Ice Maker, Ice Maker, Maker
---	--

References

- [User Manual](#)

Leave a comment

Your email address will not be published. Required fields are marked *

Comment *

Name

Email

Website

☐ Save my name, email, and website in this browser for the next time I comment.

Post Comment

Search:

e.g. whirlpool wrf535swhz

Search

[Manuals+](#) | [Upload](#) | [Deep Search](#) | [Privacy Policy](#) | [@manuals.plus](#) | [YouTube](#)

This website is an independent publication and is neither affiliated with nor endorsed by any of the trademark owners. The "Bluetooth®" word mark and logos are registered trademarks owned by Bluetooth SIG, Inc. The "Wi-Fi®" word mark and logos are registered trademarks owned by the Wi-Fi Alliance. Any use of these marks on this website does not imply any affiliation with or endorsement.