



Stundenglass 20231110 Stündenglass Module For Concentrate Instruction Manual

[Home](#) » [Stundenglass](#) » Stundenglass 20231110 Stündenglass Module For Concentrate Instruction Manual 

Stundenglass 20231110 Stündenglass Module For Concentrate Instruction Manual



CAUTION: DEVICE IS HOT DURING AND AFTER USE. WAIT UNTIL DEVICE IS COMPLETELY COOL

BEFORE CLEANING OR HANDLING.

Contents

- 1 [Getting Started](#)
- 2 [Home Screen](#)
- 3 [Settings Menu](#)
- 4 [Settings](#)
- 5 [Tank Types](#)
- 6 [Carb Cap + Battery](#)
- 7 [TROUBLE SHOOTING](#)
- 8 [Documents / Resources](#)
 - 8.1 [References](#)

Getting Started

1. Register device with serial number



2. Fully charge the Modul™ via USB-C charging port



3. Disconnect the magnetic elbow from your Stündenglass Gravity Infuser



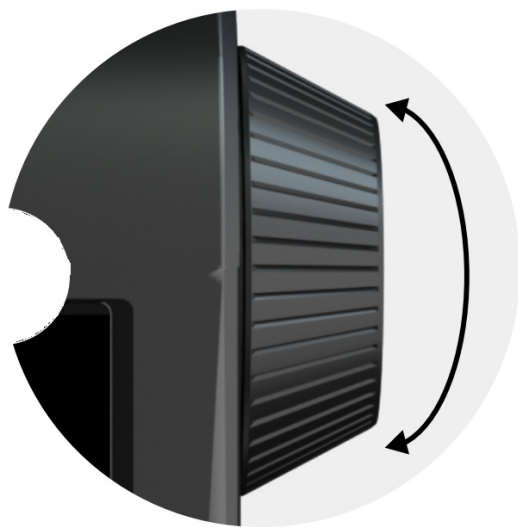
4. Connect the Modul™ to your Stündenglass® Gravity Infuser via magnetic connection shown



5. Press dial in for 3 seconds to power on

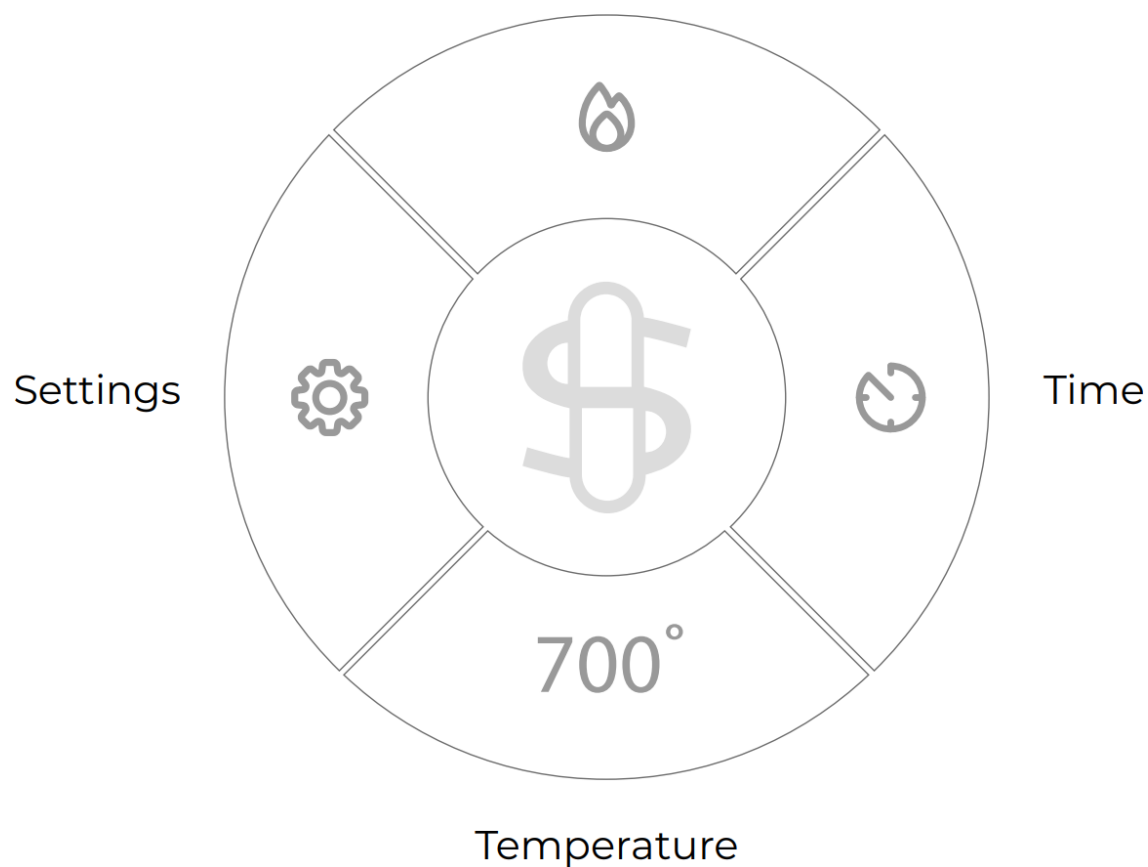


6. Spin dial to select function Selected tab will be highlighted



Home Screen

Heating



Heating



Select to begin heating.

Once a session is started, the settings are locked.



Press dial to cancel session.

Time



Select to adjust session time.



Spin dial to adjust time.



Press dial to select session time.

Temperature



Select to adjust session temperature.



Spin dial to adjust temperature.



Press dial to confirm temperature.

Settings



Select to open settings menu.



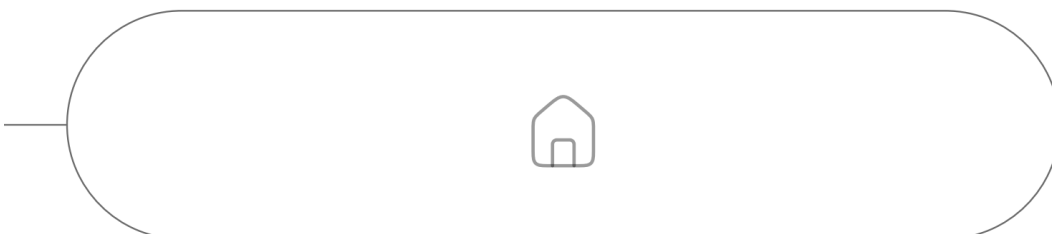
Spin dial to navigate menu.



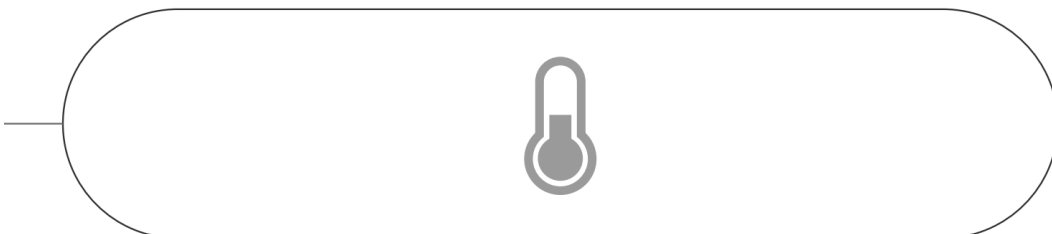
Press dial to select menu option.

Settings Menu

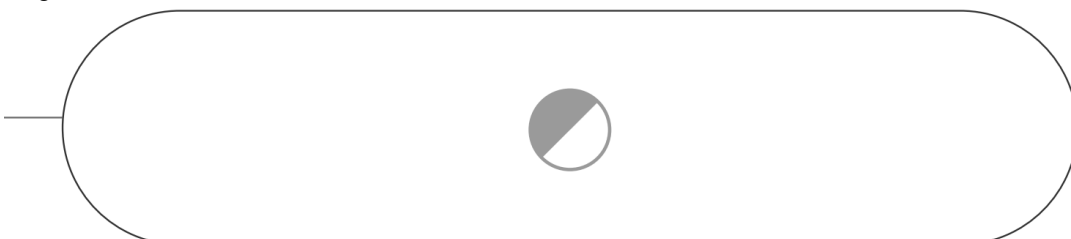
Home



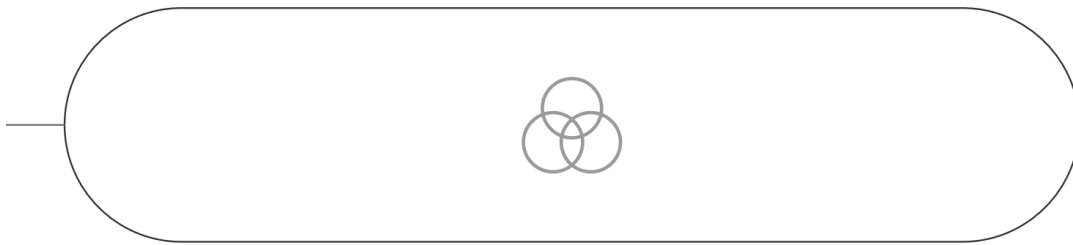
Temperature



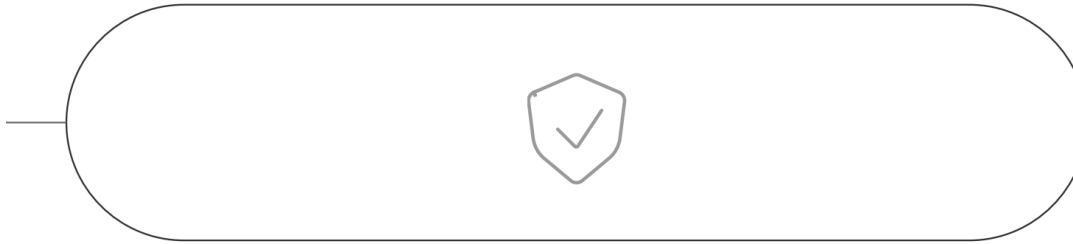
Brightness



Color



Lock



Settings

Home takes you back to home screen.

Temperature toggle F°/C° here.

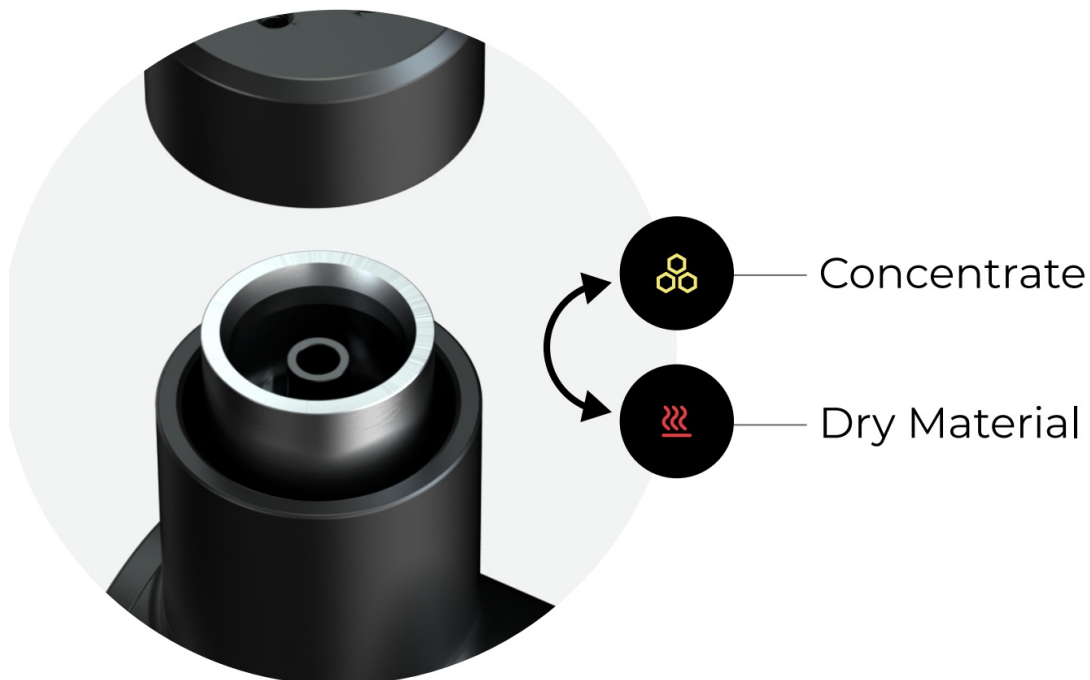
Brightness change between bright and dark modes.

Color select color theme.

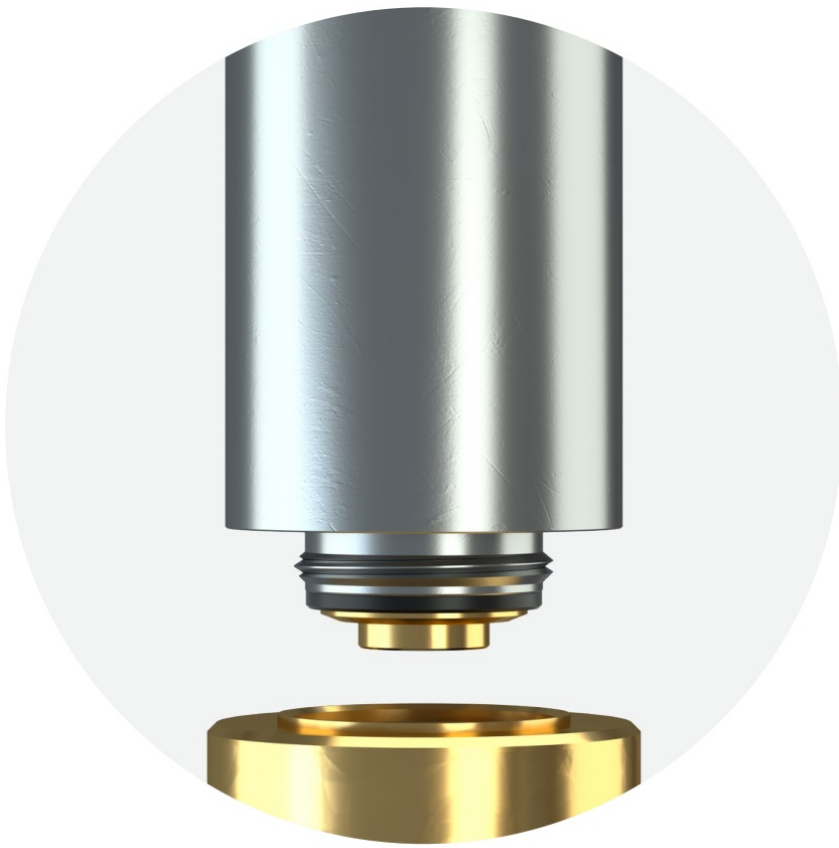
Lock lock device on next power on.

In the lock menu, select the lock icon and power down the Mödul. The next time you want to power up the Mödul, long press the dial button until the circle is completely filled. Then release and long press again for 3 seconds to power up the Mödul.

Tanks



Modul will automatically recognize tank type



Ensure the threading on the tank and adapter is clean

NOTE: Ensure the bottom of the adapter and the inside of the device where the tank connects is clean.

Tank Types



Concentrate

Concentrate

- Full Quartz chamber with custom-stamped stainless-steel heating element.
- Temperature settings between 482°/250° to 842°/450°.
- Heat up time between 15 to 45 seconds.

Cleaning – Wait until device is completely cooled after the end of a session to fully wipe down the quartz chamber with a cotton swab. Isopropyl alcohol can be used.



Dry Material (tank sold separately)

- Full Quartz chamber with custom-stamped stainless-steel heating element.
- Up to 80 watts of power.
- Heat up time between 15 to 45 seconds.
- No exposed coil.

Cleaning – Wait until device is completely cooled after the end of a session to empty the chamber into an ashtray or bin using the included loading/pick too.

Carb Cap + Battery



Carb Cap

Integrated stainless steel wax tool
with two placement settings.

Magnetic, anodized aluminum carb cap with dual ceramic airflow insert.



6000mAh Li-ion battery

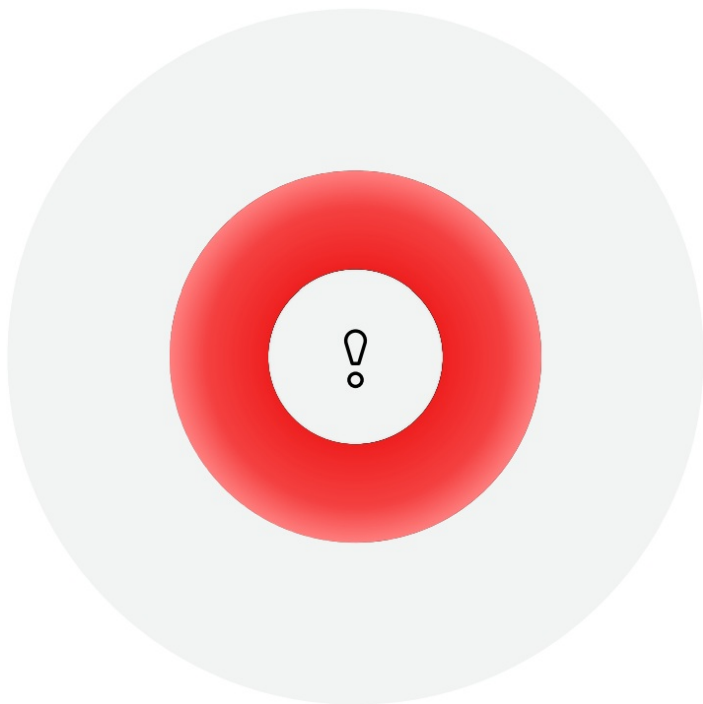
Use only included cable for charging.

Charge Modul when the battery indicator is low.

Charging at 3A will take about 2 hours.

Up to 50 sessions per charge.

TROUBLE SHOOTING



Error

Allow the device to fully cool down before checking the connection.

If there is a connection or other error, the screen will display the red circle with a “!”.

Please check tank connections and try again. The tank icon should be visible on the home screen, if it's not, there is a connection issue.

Customerservice@stundenglass.com

© 2024 Stündenglass Technologies, LLC

MODÜL™



RoHS CE

Designed in Los Angeles

Made in PRC

Stündenglass®

Documents / Resources



modül

Modul™ Operation Instructions v102
Copyright © 2024 Stündenglass Technologies, LLC
A STÜNDENGLASS COMPANY. ALL RIGHTS RESERVED.

[Stundenglass 20231110 Stündenglass Module For Concentrate](#) [pdf] Instruction Manual
St ndenglass Module For Concentrate, St ndenglass, Module For Concentrate, For
Concentrate, Concentrate

References

- [User Manual](#)

[Manuals+](#), [Privacy Policy](#)

This website is an independent publication and is neither affiliated with nor endorsed by any of the trademark owners. The "Bluetooth®" word mark and logos are registered trademarks owned by Bluetooth SIG, Inc. The "Wi-Fi®" word mark and logos are registered trademarks owned by the Wi-Fi Alliance. Any use of these marks on this website does not imply any affiliation with or endorsement.