



Freenod Earbuds User Manual

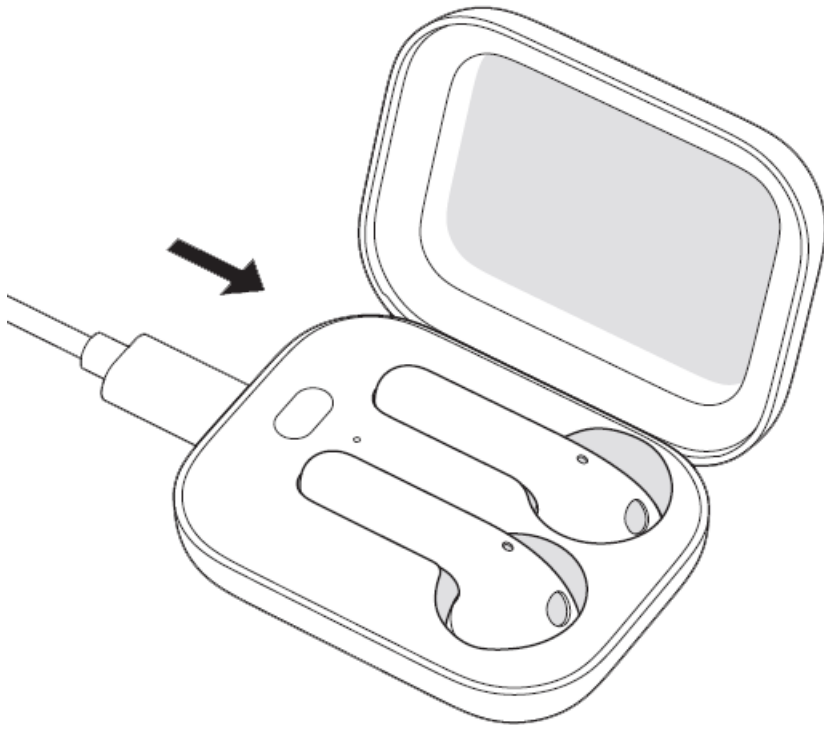
[Home](#) » [Studionod](#) » Freenod Earbuds User Manual 

Contents

- [1 Freenod Earbuds User Manual](#)
- [2 UNBOXING](#)
- [3 CONNECT TO DEVICE](#)
- [4 TURN ON BLUETOOTH](#)
- [5 TAP OPERATION](#)
- [6 INSERT/ START LISTENNING](#)
- [7 CHECK CHARGE STATUS](#)
- [8 CHARGE](#)
- [9 Safety and Handling](#)
- [10 Regulatory Compliance](#)
- [11 DOWNLOAD](#)
- [12 Related Posts](#)

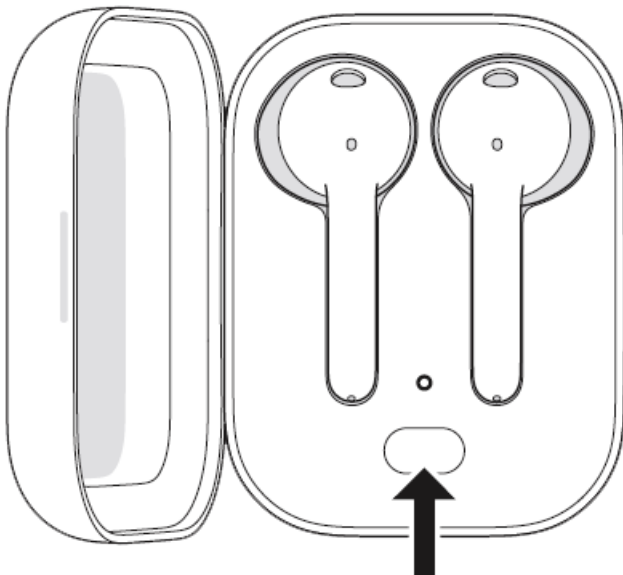
Freenod Earbuds User Manual

UNBOXING



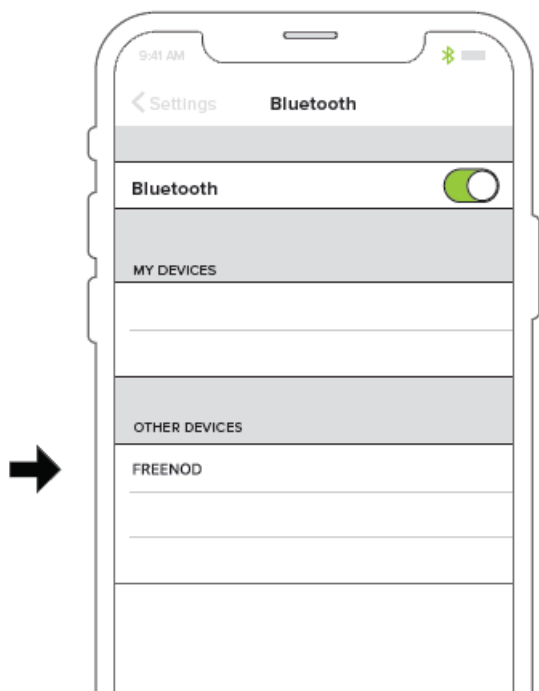
For first time use after unboxing, charge the case and earbuds using the USB cable for at least 15 minutes. Do not take the earbuds out during this time.

CONNECT TO DEVICE



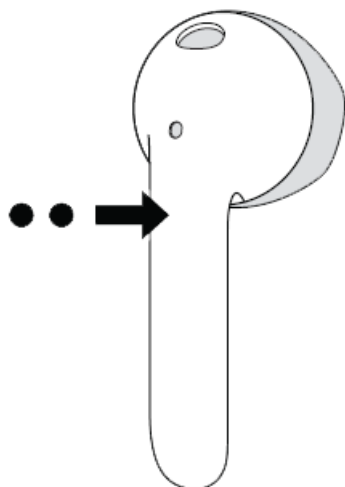
Open case, Freenod earbuds will auto-connect to the last paired device. To connect with new devices, with both earbuds in case, press button for 3 seconds until white light blinks. To reset the earbuds, press button for 10 seconds until red light blinks.

TURN ON BLUETOOTH



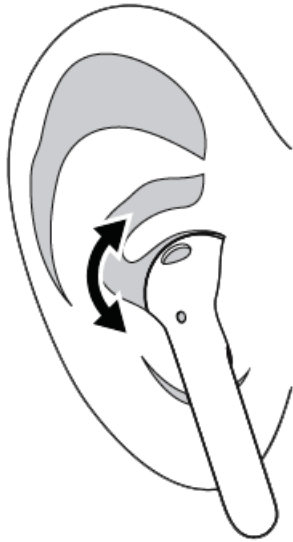
Turn on Bluetooth of the device, tap “**FREENOD**” from the list to connect.

TAP OPERATION



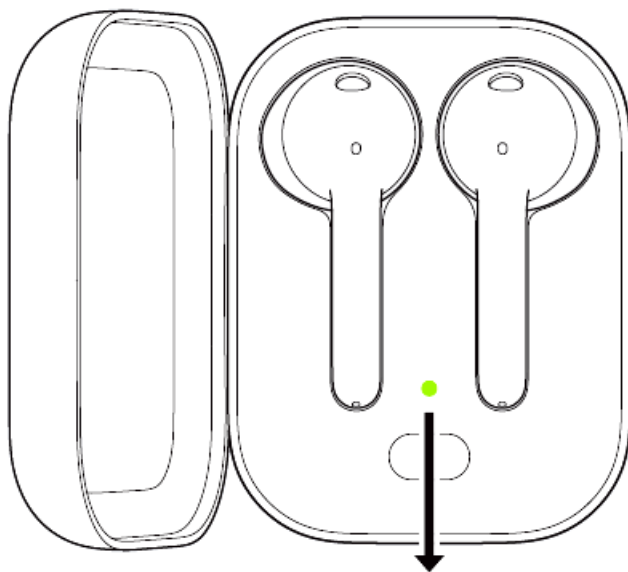
While wearing, double-tap the stem of either earbud to play/pause or answer/hang up a call, triple-tap to activate the voice assistant on your device.

INSERT/ START LISTENNING



Place in ears and adjust to get a comfortable fit. You will hear the tone indicating Freenod is ready to play.

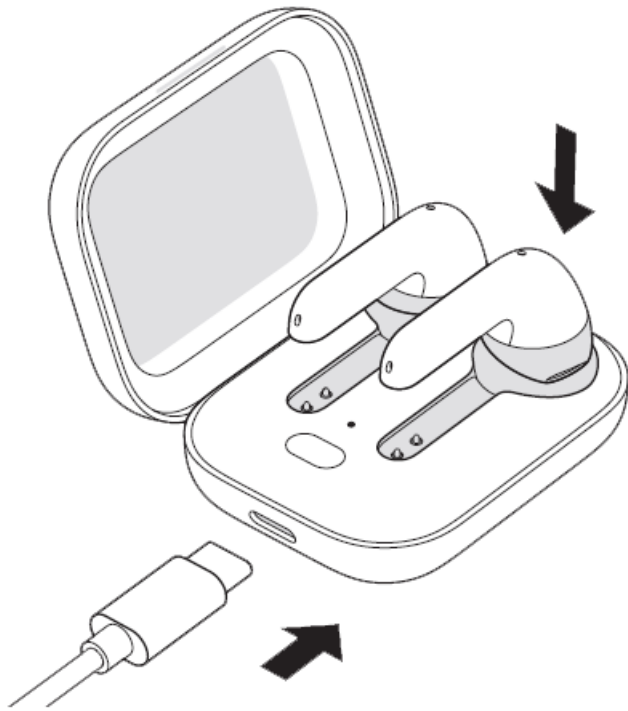
CHECK CHARGE STATUS



- Fully charged ●
- Not fully charged ●
- Case battery low ●

Light shows charge status of the earbuds when they're in the case. Otherwise, light shows charge status of the case.

CHARGE



Freenod earbuds charge while in the case. Light will blink: red when the case battery is low. Plug in the USB cable to charge.

Safety and Handling

Handle Freenod earbuds and case with care. They contain sensitive electronic components, including batteries, and can be damaged, impair functionality, or cause injury if dropped, burned, punctured, crushed, disassembled, or if exposed to excessive heat or liquid. Don't use damaged Freenod earbuds or case. Wipe off sweat from the earbuds and the charging case before charging. Remove headphones immediately if you experience a warming sensation. Don't attempt to alter this product or replace the batteries yourself.

The headset can produce high-volume and high-pitched sound. Exposure to such sounds may cause permanent hearing loss. The volume level may vary depending on the conditions of the mobile phone you are using, its reception status and volume settings, and the environment.

Do not use the earbuds at high volume for an extended period. To avoid hearing loss, use headphones at a comfortable and moderate volume. Turn down the volume of your device first before putting on the earbuds, and then gradually increase the volume to a comfortable level.

If you use the headset to make a call while driving, you should use it with caution and follow the applicable laws regarding the use of mobile phones and headsets. Some local regulations have specific restrictions on the use of such products while driving, such as the configuration of a single earpiece. Do not use the headset for other purposes while driving.

If you use headphones when doing activities that require concentration, you should pay attention to the safety of yourself and others, such as when riding a bicycle or walking on or near roads, construction sites, or railways. You should remove the headphones or adjust the volume to ensure that you can hear the surrounding sounds, including alarm and warning signals.

Freenod earbuds and case contain components and radios that emit electromagnetic fields.

Freenod earbuds and case also contain magnets.

These electromagnetic fields and magnets may interfere with pacemakers, defibrillators, or other medical devices. Maintain a safe distance of separation between your medical device and the earbuds and case. Consult

your physician and medical device manufacturer for information specific to your medical device. Stop using the earbuds and case if you suspect they are interfering with your pacemaker, defibrillator, or any other medical device

Avoid prolonged skin contact with a device, its power adapter, the charging cable and connector, or a wireless charger when plugged into a power source, because it may cause discomfort or injury. For example, while the case is charging using the charging cable and a power adapter or a wireless charger plugged into a power source, don't sit or sleep on the case, charging cable, connector, power adapter, or wireless charger, or place them under a blanket, pillow, or your body. Take special care if you have a physical condition that affects your ability to detect heat against your body.

Studio Nod earbuds and the case may present a choking hazard or cause other injuries to small children and pets. Keep them away from small children and pets. The earbuds and the case contain lithium-ion batteries and may be hazardous if swallowed. If ingested, seek immediate medical attention.

For support and troubleshooting information, user discussion boards, and the latest Studio Nod news, go to www.studionod.com

Regulatory Compliance

FCC Compliance Statement

Note: This equipment has been tested and found to comply with the limits for a Class B digital device, pursuant to part 15 of the FCC Rules. These limits are designed to provide reasonable protection against harmful interference in a residential installation. This equipment generates uses and can radiate radio frequency energy and, if not installed and used in accordance with the instructions, may cause harmful interference to radio communications. However, there is no guarantee that interference will not occur in a particular installation. If this equipment does cause harmful interference to radio or television reception, which can be determined by turning the equipment off and on, the user is encouraged to try to correct the interference by one or more of the following measures:

- Reorient or relocate the receiving antenna.
- Increase the separation between the equipment and receiver.
- Connect the equipment into an outlet on a circuit different from that to which the receiver is connected.
- Consult the dealer or an experienced radio/TV technician for help

Changes or modifications not expressly approved by the party responsible for compliance could void the user's authority to operate the equipment

This device complies with Part 15 of the FCC Rules. Operation is subject to the following two conditions:

- (1) this device may not cause harmful interference, and
- (2) this device must accept any interference received, including interference that may cause undesired operation.

ISED Canada Compliance

This device contains licence-exempt transmitter(s)/receiver(s) that comply with Innovation, Science and Economic Development Canada's licence-exempt RSS(s). Operation is subject to the following two conditions:

- (1) This device may not cause interference.
- (2) This device must accept any interference, including interference that may cause undesired operation of the device.

COUNTRY: CANADA

CERTIFICATION NUMBER: IC: 26434-FNA3

UNITED STATES FCC ID: 2AXFY-FNA3 (INCLUDING PUERTO RICO)

©2020 Nod London Ltd, UK. All rights reserved.

The Bluetooth® word mark and logos are registered trademarks owned by Bluetooth SIG, Inc. and any use of such marks by Nod London Ltd. is under license.

DOWNLOAD

Freenod Earbuds User Manual – [[Download PDF](#)]

FREENOD Safety and Regulations – [[Download PDF](#)]

Manuals+.