



STUDIOFINIX Finix One Bluetooth Bookshelf Speakers Instruction Manual

[Home](#) » [STUDIOFINIX](#) » STUDIOFINIX Finix One Bluetooth Bookshelf Speakers Instruction Manual 

Contents

- [1 STUDIOFINIX Finix One Bluetooth Bookshelf Speakers](#)
- [2 Brand Story](#)
- [3 Product Concept](#)
- [4 Feature & Functions](#)
- [5 Instructions](#)
- [6 Speaker rear panel](#)
- [7 Multiple FINIX ONE's Connection](#)
- [8 Power supply](#)
- [9 Operating Environment & Safety](#)
- [10 Safety Instruction](#)
- [11 warranty](#)
- [12 Specifications](#)
- [13 FCC Warning Statement](#)
- [14 Documents / Resources](#)
- [15 Related Posts](#)

STUDIOFINIX

STUDIOFINIX Finix One Bluetooth Bookshelf Speakers



Brand Story

STUDIOFINIX, a technology-based brand, has mature experience in R&D and production, project applications, etc. The STUDIOFINIX team which has a background in scientific research devotes itself to the audio industry with their enthusiasm for music. STUDIOFINIX conducts research on various styles of songs, both ancient and modern, domestic and abroad. day and night, to strive for presenting the beauty of each song through every tangible hardware such as cabinets, speakers, and horns, combined with every invisible electronic technology such as DSP and AMP. Today, STUDIOFINIX integrates professional-grade audio technology and love for music into FINIX ONE, in an attempt to give the best gift for you!

Product Concept

Tunes the FINIX ONE to the best over 50,000 various styles of songs with over 200,000 hours of repeated listening and studying by an R&D Team who is all crazy for music, presenting the beauty of every music detail. The FINIX ONE uses Three-Band-Frequency electronic audio filter, Special-Low-Frequency Driver Technology takes its sound quality to the top. Redundant Arrays of Independent Speakers allow you to link more FINIX ONE speakers together to be flexibly suitable for all your listening environment. The FINIX ONE is designed with all our love for music! FINIX ONE is the Best Gift for You!

www.Herdiotech.com

Feature & Functions

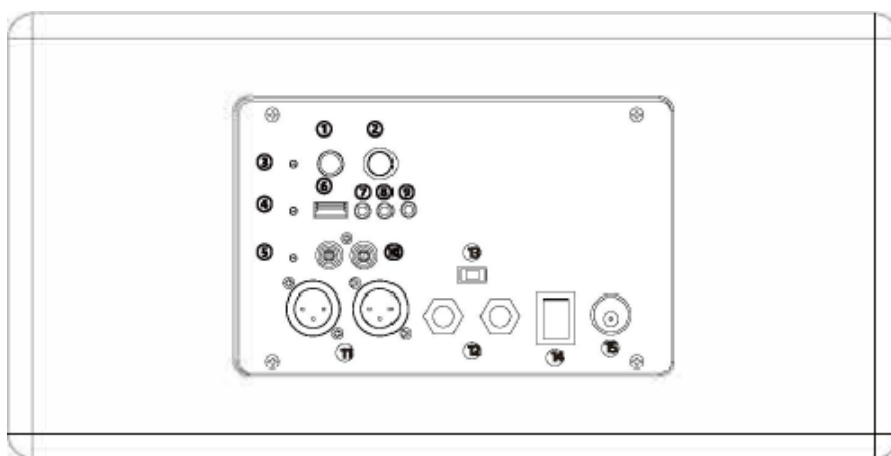
- 1. Redundant Arrays of Independent Speaker Design:** Single STUDIOFINIX FINIX ONE can bring you impressive music performance; Moreover, with the changes of the music scene, simple connection and toggling the button will accomplish the systematic STUDIOFINIX online of two or more FINIX ONE speakers of the same type, and support the sharing of audio sources on all single boxes and play the music simultaneously, easily linked together to make a stereo surround systems.
- 2. Special-low-Frequency Driver Technology:** Extend the low-frequency playback to 38HZ, producing more power, full and powerful bass, and impressing.
- 3. Three-Band-Frequency electronic audio filter:** FINIX ONE compact box design with self-developed DSP and virtual Three-Band-Frequency technology make the sound resolution better and the positioning more accurate, showing the beauty of each piece of music adequately.
- 4. Nano-coated dual 4-INCH full-range speakers :** It adopts dual 4-inch full-range speakers, and the surface

adopts special high-tech nano-coating, with clear layers, loud treble, stable mid-range, and full bass. At the same time, the speaker has the splash-proof feature to prolong the product life.

5. **Bluetooth 5.0:** The connection is more stable and the speed is faster, and the effective transmission distance can reach 18 meters in an ideal environment. You can play audio sources directly via a Bluetooth-enabled smartphone.
6. **Pure wood cabinet+ piano paint coating surface:** The thick solid wood cabinet is used to effectively suppress resonance and ensure pure sound quality. The piano lacquer is high-end and classic.

www.Herdiotech.com

Instructions

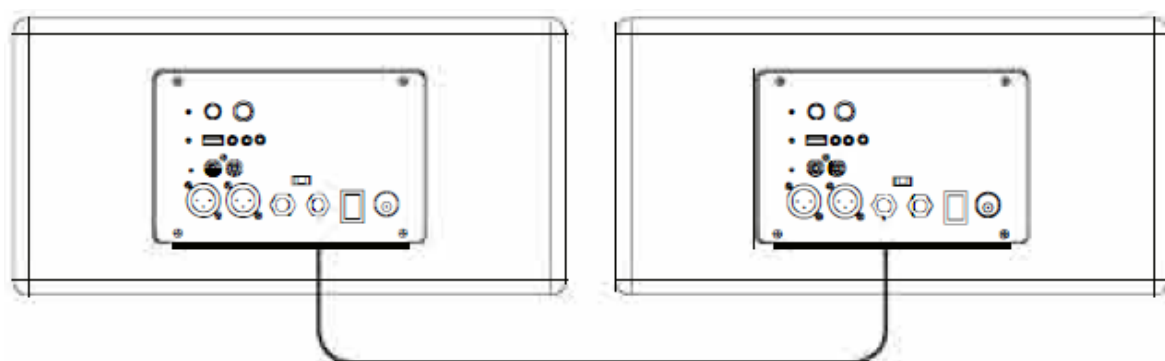


Speaker rear panel

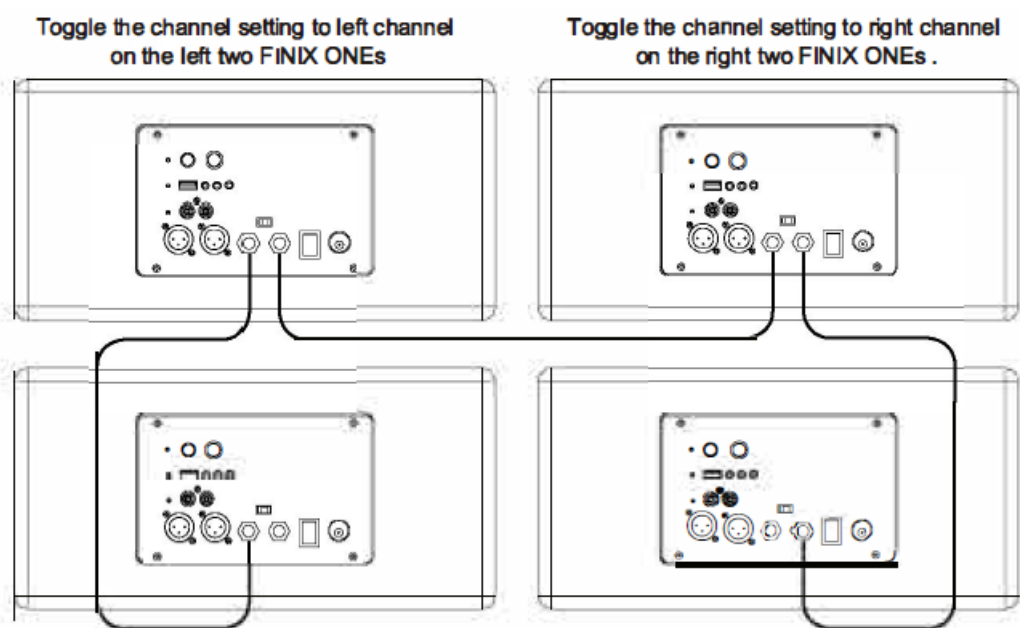
1. **Mode selection:** 1. Press the button to switch mode between Bluetooth, AUX. USB(you need to connect to a USB flash drive to display); 2. Press and hold for more than 3 seconds to disconnect paired Bluetooth devices;
2. **Volume knob:** Adjust output volume, turn right/left to up/down volume;
3. **Bluetooth:** Bluetooth indicator light (blue), operating instructions: when the Bluetooth is in unpaired status.the Bluetooth indicator light flashes (2 times per second), then turn on the Bluetooth over your phone, the indicator light will turn solid after the Bluetooth is successfully connected.Now. you can play your favorite music. Press and hold the mode button to disconnect paired device. then you can connect to another device;
4. **USB:** You're able to switch to USB mode after the flash drive is plugged in. then the audio sources in your flash drive will automatically play;
5. **AUX:** AUX line indicator (green), the indicator will be always on after you switch to AUX mode;
6. **USB peripheral/sound card mode:** 1. FINIX ONE only supports a USB flash drive with FAT32//exFAT file system; 2. FINIX ONE can work as an external sound card if you use a USB cable to connect FINIX ONE and a computer;
7. **Previous track:** Press the Previous track button to switch to the previous track in USB, Bluetooth mode.
www.Herdiotech.com
8. **Play/pause:** press the play/pause button to play or pause in USB, Bluetooth mode;
9. **Next track:** Press the next track button to switch to the next track in USB, Bluetooth mode;
10. **Left-unbalanced input-right R:**
 1. White–left channel–L: unbalanced left channel input port:

2. Red-right channel–R: unbalanced right channel input port:
11. **Left-balanced input–right R:**
 1. Left channel–L: balanced left channel input port;
 2. Right channel–R: balanced right channel input port
12. **LINK input LINK output:** You can link multiple FINEX ONEs together through a 6.35 double male stereo audio cable, and the audio source interface on each FINIX One can exist at the same time and share it to the entire system (LINK cable is not included in the package);
13. **Channel setting:** Toggle the sound channel setting button to switch stereo, left sound channel.right sound channel;
14. **Power switch:** Press the power button to switch to on/off;
15. **DC-24V power Input port:** Power cord interface.

Multiple FINIX ONE's Connection



LINK line connection diagram 1



LINK line connection diagram 2

Power supply

Please use the original adapter only to safely operate the device.

Operating Environment & Safety

Do not use this product in a humid environment or in an environment prone to splashing and soaking. Do not place the product in any high-temperature environment that may generate heat sources such as radiators, heating pipes, stoves, microwave ovens, etc. To prevent hearing damage, do not use this product at close range and at high volume for a long time. Using this product in high temperature or severe cold areas will cause product performance degradation, such as battery and speaker broke or battery performance degradation.

Safety Instruction

Obey all the safety and operating instructions of the speaker, which can prolong the product life appropriately; Dismantling or modifying this product without permission may invalidate the warranty, and our company will not be responsible for any accidents caused by unauthorized dismantling or modification of the product.

warranty

All STUDIOFINIX products have 1-year Limited Warranty against defects in materials and workmanship. Proof of purchase must accompany all claims. During the warranty period, STUDIOFINIX will replace any defective part and correct any defect in workmanship without charge for either parts or labor.

Specifications

Product Mode	FINIX ONE
Product Name	Redundant Arrays of Independent Speakers
Audio Source	Bluetooth, USB flash drive (support sound card mode), RCA, XLR input; LINK IN/OUT 6.35 connector
Bluetooth Version	5.0 (ideal receiving distanceS 18 meters)
Output Power	2×50W
Woofers	4Ω high-performance dual 4-inch full-range speakers
Power Adapter	24VDC-5A (wide range AC input)
Box Weight	5kg(11 pound)
Speaker Box Size	360*185*236mm (14.17*7.28*9.29 inch)


FCC Warning Statement

Changes or modifications not expressly approved by the party responsible for compliance could void the user's authority to operate the equipment. This equipment has been tested and found to comply with the limits for a Class B digital device, pursuant to Part 15 of the FCC Rules. These limits are designed to provide reasonable protection against harmful interference in a residential installation. This equipment generates uses and can radiate radio frequency energy and, if not installed and used in accordance with the instructions, may cause harmful interference to radio communications. However, there is no guarantee that interference will not occur in a particular installation. If this equipment does cause harmful interference to radio or television reception, which can be determined by turning the equipment off and on, the user is encouraged to try to correct the interference by one

or more of the following measures:

- Reorient or relocate the receiving antenna.
- Increase the separation between the equipment and receiver.
- Connect the equipment into an outlet on a circuit different from that to which the receiver is connected.
- Consult the dealer or an experienced radio/TV technician for help.

Documents / Resources

	<p>STUDIOFINIX Finix One Bluetooth Bookshelf Speakers [pdf] Instruction Manual FINIXONE, 2A49C-FINIXONE, 2A49CFINIXONE, Finix One Bluetooth Bookshelf Speakers, Bluetooth Bookshelf Speakers</p>
---	--