



stryker LUCAS 3 Chest Compression System User Guide

[Home](#) » [stryker](#) » stryker LUCAS 3 Chest Compression System User Guide 

Contents

- [1 stryker LUCAS 3 Chest Compression System](#)
- [2 Product Information](#)
- [3 Connectivity Guide Features](#)
- [4 Product Usage Instructions](#)
- [5 Manual transmission](#)
- [6 Explanation of notifications](#)
- [7 Emergency Care](#)
- [8 CONTACT](#)
- [9 Documents / Resources](#)
 - [9.1 References](#)

stryker

stryker LUCAS 3 Chest Compression System



Product Information

The LIFENET device setup tool is a connectivity guide designed for users of the LUCAS device. It facilitates communication between EMS (Emergency Medical Services) and hospital staff by transmitting data and generating post-event reports. The LUCAS 3 device is an adjunct to manual CPR, used when effective manual CPR is not possible due to factors such as transport, extended CPR, fatigue, or insufficient personnel.

Connectivity Guide Features

- Allows users to create a LIFENET user account
- Provides options to define LUCAS device setup
- Enables Wi-Fi setup and configuration for each device
- Generates LUCAS post-event reports after compression delivery
- Supports automatic transmission of reports to pre-designated email addresses
- Provides access to support resources such as LIFENET Care and LIFENET Care App

Important Notes

- The LUCAS device's factory default settings are consistent with the 2020 AHA (American Heart Association) and ERC (European Resuscitation Council) guidelines.
- Changing the default settings should only be done under the guidance of a physician experienced in CPR and familiar with CPR literature.
- Wi-Fi setup allows users to assign a description/name (up to 32 characters) to each device. The device name can be edited within the user's profile.
- The LUCAS device can transmit data to LIFENET and create post-event reports. Reports can be automatically sent to specified email addresses.

Product Usage Instructions

1. STEP 1: LIFENET User Account

- The LUCAS Device Administrator, provided with the LUCAS device purchase, will receive a User Account email from the LIFENET System. Search your inbox or junk/trash folders for “LIFENET System: Your account was created” if you cannot locate the email.

2. STEP 2: Defining LUCAS Device Setup Options

- If you wish to keep the factory default settings, proceed to STEP 3. If you want to change the settings, consult a physician experienced in CPR and familiar with CPR literature.
- Refer to the Instructions for Use (IFU) for a complete description of all Setup Options. The IFU can be found at www.stryker.com/emergency-care.

3. STEP 3: Wi-Fi Setup for LUCAS Device(s)

- During Wi-Fi setup, assign a description/name (up to 32 characters) to each device.
- Configure the Wi-Fi settings for each device.

4. STEP 4: LUCAS Post-Event Report

- After each use of the LUCAS device where compression was delivered, the device can transmit data to LIFENET and create a post-event report.
- You can generate a post-event report in two ways:
 1. Press the TRANSMIT key on the LUCAS device.
 2. Use automatic transmission, where the device will transmit all cases not yet downloaded, starting with the most recent. Multiple transmissions may be necessary if there are many files or if the network is slow.

5. STEP 5: LIFENET Asset Notifications

- Monitor LIFENET notifications for asset-related updates or information.
- Utilize the provided support resources, including LIFENET Care and LIFENET Care App, for further assistance.

For further information or inquiries, please contact your Stryker representative or visit the Stryker website at www.stryker.com.

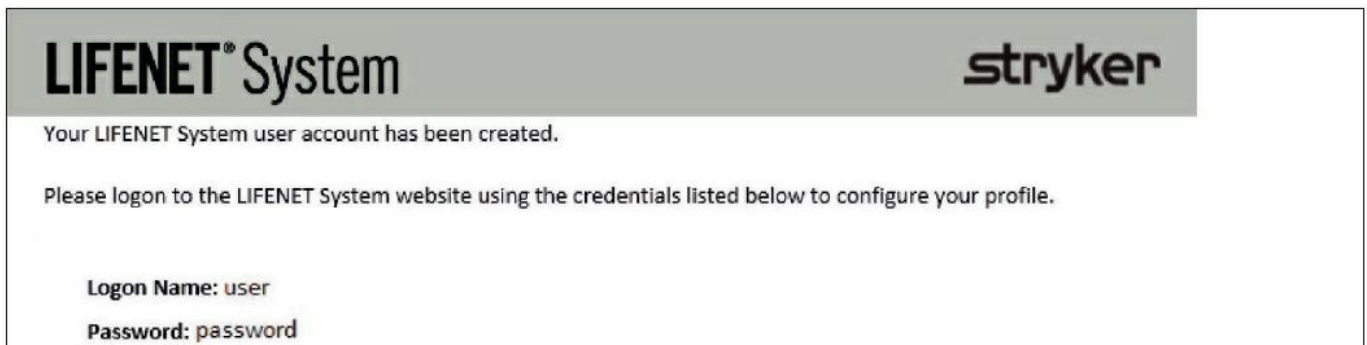
Note: This document is intended solely for the use of healthcare professionals. Healthcare professionals should rely on their own clinical judgment and be trained in the use of the product before using it. Stryker does not provide medical advice.

The LUCAS® 3 device, version 3.1 with wireless connectivity to the LIFENET® System, allows for device configuration, post-event reporting and asset management. This Connectivity Guide highlights the main steps in device setup.



STEP 1: LIFENET User Account

The e-mail address associated with the LUCAS Device Administrator provided with the LUCAS device purchase will receive a User Account e-mail from the LIFENET System.



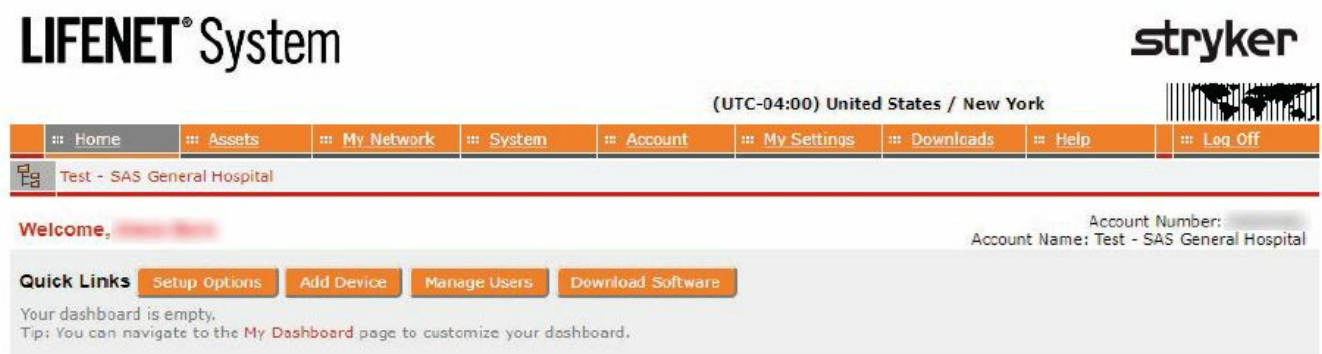
- <https://www.lifenetsystems.com>.

NOTE: If you cannot locate this e-mail, search your inbox or junk/trash folders for “LIFENET System: Your account was created”.

NOTE: If your facility or agency already has an existing LIFENET Account proceed to STEP 2. Click the link in the e-mail to get started. At first login you will change your password.

STEP 2: Defining LUCAS Device Setup Options

- Your LUCAS device is delivered with factory default settings.* If you do NOT want to change any of the factory default settings of your LUCAS device, proceed to STEP 3.
- If you want to change the default settings, this should be done only under the direction of a physician who is knowledgeable in CPR and familiar with CPR literature.*
- On your LIFENET account home page, click on ‘Setup Options’.



- On the right side under ‘Actions’, click on the symbol for ‘Edit Setup Options’.



- Follow on-screen steps to change your LUCAS device Setup Options using the drop down menus.

NAVIGATION STEPS:

1 Setup Options
2 **Compression**
3 Ventilation
4 Suction Cup Start Position
5 Pressure Pad Release
6 Timers
7 Data Transmission
8 Assign to Devices
9 Summary

STEP 2/9: Compression
Name Your Profile

Power On

Rate at Power ON	102 compressions/min	▼
Compression Depth	2.1 inches / 53 mm	▼

Change Rate During Operation

Allow Changing Rate to 111 compressions/min	Off	▼
Allow Changing Rate to 120 compressions/min	Off	▼

Hover over fields for additional information; default values are in bold

CANCEL

SAVE AND CLOSE

BACK

NEXT

- LUCAS factory default settings are consistent with 2020 AHA and ERC guidelines. See chapter 9 of the IFU.
- Please refer to the Instructions for Use for LUCAS 3 device, version 3.1 at www.stryker.com/emergency-care for a complete description of all Setup Options.
- Once you have completed your Setup Options, check the box “Assign as default profile to new devices” if you want to make these settings default for all new LUCAS devices that are registered to your account. This means the created Setup Options profile will automatically be applied to all newly enrolled LUCAS 3 devices.
- You may print out the summary of your device Setup Options for reference.

NAVIGATION STEPS:

1 Setup Options
2 Compression
3 Ventilation
4 Suction Cup Start Position
5 Pressure Pad Release
6 Timers
7 Data Transmission
8 Assign to Devices
9 **Summary**

STEP 9/9: Summary
Name Your Profile

Please verify all setup options are correct before selecting FINISH

3/13/2018 15:39
LUCAS 3 - Setup options

1. Setup Options

Setup Options Profile Name	Name Your Profile
Device Model	LUCAS 3
Software Version	3.1.4.26

2. Compression

Rate at Power ON	102 compressions/min
Compression Depth	2.1 inches / 53 mm
Allow Changing Rate to 111 compressions/min	Off
Allow Changing Rate to 120 compressions/min	Off

☐ Assign as default profile for new devices

Print Summary

Assign devices

Print

STEP 3: Configuring the LUCAS device for Wi-Fi®




The LUCAS device has active Bluetooth® as the factory default. A few steps are required to configure and enable LUCAS Wi-Fi.

NOTE: You will need a Windows computer with Bluetooth capabilities and your LUCAS device(s).

- On your LIFENET home screen go to 'Download Software'.

LIFENET® System

The screenshot shows the LIFENET System web interface. At the top is a navigation bar with tabs: Home, Assets, My Network, System, Account, and My Settings. Below the navigation bar is a header area with a user icon and the text 'TZ_LDST_Customer'. The main content area is titled 'Downloads' and has a filter bar with options: Show: All (selected), Gateways, and Other. Under the 'Downloads' section, there is a sub-header 'LIFENET Device Setup Tool'. Below this, there are three download items, each with a download icon, a 'Download' link, a version/bitness string, and a file size in parentheses. The first item is version 5.0.0.0 / 32-bit, 61.04 KB, with description 'DM_ldst' and release notes. The second item is version 3.0.0.6 / 32-bit, 10.09 KB, with description 'Test LDST32' and release notes. The third item is version 3.0.0.1 / 64-bit, 2.00 MB, with no description or release notes.

Download	Version / Bitness	File Size	Description	Release Notes
 Download	5.0.0.0 / 32-bit	(61.04 KB)	DM_ldst	
 Download	3.0.0.6 / 32-bit	(10.09 KB)	Test LDST32	1
 Download	3.0.0.1 / 64-bit	(2.00 MB)		

- Click on 'download' next to the LIFENET Device Setup Tool.
- Once the program has downloaded to your computer, run the program and follow the instructions to configure your LUCAS device(s) to connect to pre-designated Wireless networks.
- **NOTE:** During Wi-Fi setup, you will be able to give the device a description/name (i.e. Medic 10 or ED 5). This description must be LESS than 32 characters. The device name can also be edited within your profile under under 'Assets / edit asset'
- **NOTE:** You will have to configure the Wi-Fi settings for each device.

STEP 4: LUCAS Post-Event Report

- After each LUCAS use where a compression was delivered, the LUCAS device can transmit data to LIFENET and create a LUCAS device Post-Event Report. This report can be delivered automatically to any pre-designated email address(es).
- The e-mail contains a LUCAS Post-Event Report in PDF format which includes a LUCAS Device Summary, Time Graph, and Event Log.

A LUCAS Post-Event Report has been received.

Account Name: zDemo - Field Sales

Transmitted by: LUCAS 3

Description: Warner New Lucas

Serial Number: 3518C992

Event Duration: 7 minute(s) 33 second(s)

Event Start Time: 9/21/2021 11:24:24 AM (UTC-05:00)

Log on to LIFENET System website for more details:

Notification occurred: 11/2/2021 4:28:37 PM (UTC-05:00)

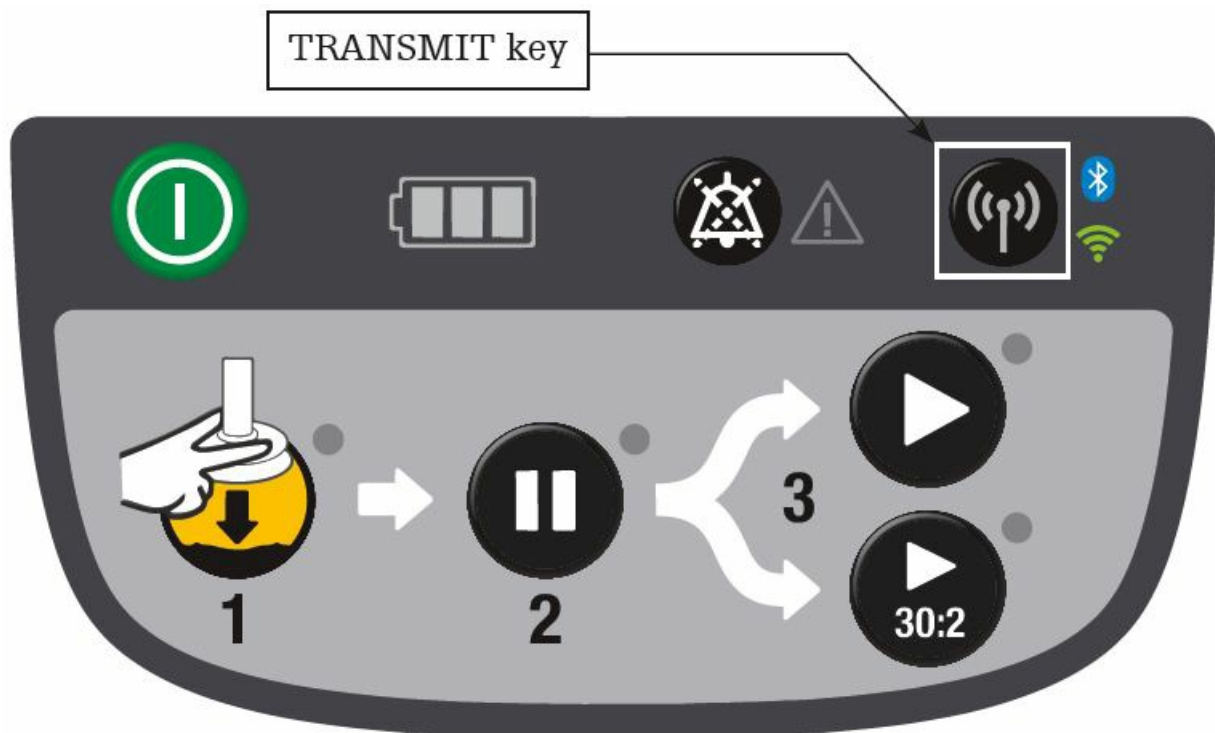
To unsubscribe from this notification, please follow the link below:

- <https://www.lifenetsystems.com>.
- <https://www.lifenetsystems.com/mynotifications.asp>.

You can generate a LUCAS Post-Event e-mail in two ways:

Manual transmission

- With the device in Power OFF mode and near a known Wi-Fi network, press the TRANSMIT key. The lights next to the key will blink. Once transmission is complete the device will turn off.



Automatic transmission

- In the Setup Options you can enable 'Auto-Transmit at Charging' and the LUCAS device will automatically send device data every time the LUCAS device is connected to the External Power Supply for charging and in range

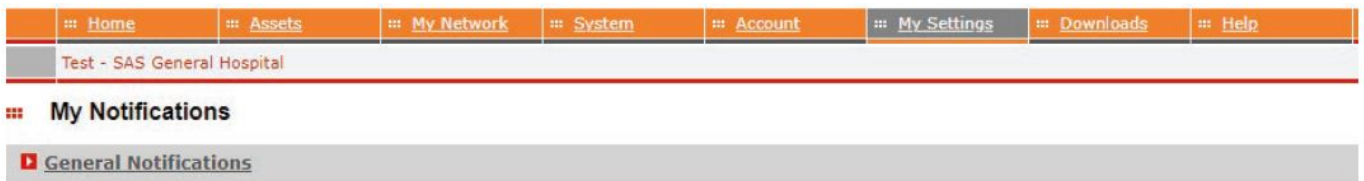
of a known network.

NOTE: The LUCAS device will transmit all cases that have not been downloaded, starting with the most recent. If there are many files to transmit or your network is slow you may need to initiate multiple transmissions.

- Administrators of the LIFENET account are automatically opted-in to receive the LUCAS Post-Event Reports (manual transmission) at their registered e-mail address.
- To add additional e-mail recipients go to 'Account / Users' and then select
- 'Add User'. You can create a LUCAS Report User profile and add multiple e-mail addresses to receive the Post-Event Report.



- To activate or deactivate the LUCAS Post-Event Report e-mail, go to
- 'My Settings / My Notifications' and check/uncheck the 'LUCAS Summary
- Report' box under 'General Notifications'.



STEP 5: LIFENET Asset notifications

- LIFENET connectivity allows for great asset insight and management of your LUCAS device.
- Every time you push the TRANSMIT key on the LUCAS device, when the device is off, battery and device information will be updated in your LIFENET account.
- Sign up for e-mail asset notifications under 'Account / Notifications' and 'General notifications'.



Explanation of notifications

Needs Attention

- Includes 'Battery Expiring' – 20 uses or 3 months to go

Not Ready

- Includes 'Battery Expired' – over 200 uses or 4 years
- Includes 'Self Test' – if device failed a self test on startup

Outdated

- Device has not exchanged data with LIFENET in 14 days.
- Not an indication of malfunction.

Support Resources

- Please refer to the LUCAS 3 chest compression system Instructions for Use (version 3.1) for complete directions for use indications, contraindications, warnings, cautions, and potential adverse events. The Instructions for Use are included with your device or can be obtained at www.stryker.com/emergencycare.
- For detailed assistance within your LIFENET account please refer to the 'Help' on your account page.
- If you still require help please click on 'Contact Stryker' at the bottom of your LIFENET account page.
- For all other inquiries please contact your local Stryker representative.

LIFENET Care and LIFENET Care App, is a data transmission system, designed to facilitate communication between EMS and hospital staff. LIFENET is not intended to be used to make remote diagnostic or patient care decisions—patient care decisions are made by the healthcare provider on scene based on actual patient assessment. The LUCAS 3 device is for use as an adjunct to manual CPR when effective manual CPR is not possible (e.g., transport, extended CPR, fatigue, insufficient personnel). For further information, please contact your Stryker representative or visit our website at stryker.com.

Emergency Care

This document is intended solely for the use of healthcare professionals. A healthcare professional must always rely on his or her own professional clinical judgment when deciding whether to use a particular product when treating a particular patient. Stryker does not dispense medical advice and recommends that healthcare professionals be trained in the use of any particular product before using it. The information presented is intended to demonstrate Stryker's product offerings. A healthcare professional must always refer to operating instructions for complete directions for use indications, contraindications, warnings, cautions, and potential adverse events, before using any of Stryker's products. Products may not be available in all markets because product availability is subject to the regulatory and/or medical practices in individual markets. Please contact your representative if you have questions about the availability of Stryker's products in your area. Specifications subject to change without notice. Stryker or its affiliated entities own, use, or have applied for the following trademarks or service marks: LIFENET, LUCAS, Stryker. All other trademarks are trademarks of their respective owners or holders. The absence of a product, feature, or service name, or logo from this list does not constitute a waiver of Stryker's trademark or other intellectual property rights concerning that name or logo. 05/2023 M0000013865 REV AA
Copyright © 2023 Stryker

CONTACT



- Jolife AB
- Scheelevägen 17
- Ideon Science Park
- SE-223 70

- LUND, Sweden

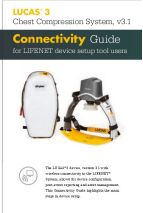
Distributed by

- Physio-Control, Inc.
- 11811 Willows Road NE
- Redmond, WA, 98052 U.S.A.
- Toll free 800 442 1142
- stryker.com



Distributed by

- Stryker Canada
- 2 Medicorum Place
- Waterdown, Ontario
- L8B 1W2
- Canada
- Toll free 800 668 8323

Documents / Resources

	<p>stryker LUCAS 3 Chest Compression System [pdf] User Guide</p> <p>LUCAS 3 Chest Compression System, LUCAS 3, Chest Compression System, Compression System</p>
---	---

References

-  [International homepage | Stryker](#)
-  [Emergency Care | Stryker](#)