



Strong HELO-PLUSB-EU Smart Wifi Plug 2x USB User Manual

[Home](#) » [STRONG](#) » Strong HELO-PLUSB-EU Smart Wifi Plug 2x USB User Manual 

Contents

- [1 Strong HELO-PLUSB-EU Smart Wifi Plug 2x USB](#)
- [2 Product Specifications](#)
- [3 Package Contents](#)
- [4 Usage Instructions](#)
- [5 FUNCTION DIAGRAM](#)
- [6 SPECIFICATIONS](#)
- [7 HOW TO CONNECT TO WI-FI?](#)
- [8 A quick guide to using Amazon Echo](#)
- [9 Set up the Echo with the Amazon Alexa App](#)
- [10 A quick guide to using Google Home](#)
- [11 SERVICE CENTER](#)
- [12 Documents / Resources](#)
- [13 Related Posts](#)

Strong

Strong HELO-PLUSB-EU Smart Wifi Plug 2x USB



HELO-PLUSB-EU Smart Wi-Fi Plug 2x USB

The HELO-PLUSB-EU Smart Wi-Fi Plug 2x USB is a smart power plug that can be controlled through the Helo by Strong app. It comes with two USB ports and can be used to control various smart devices in your home.

Product Specifications

- **Operating temperature:** 0°C to 35°C
- **Storage temperature:** -10°C to 60°C
- **Operating humidity:** 10% to 90% RH, non-condensing
- **WLAN specification:** IEEE 802.11 b/g/n, 2.4 GHz

Package Contents

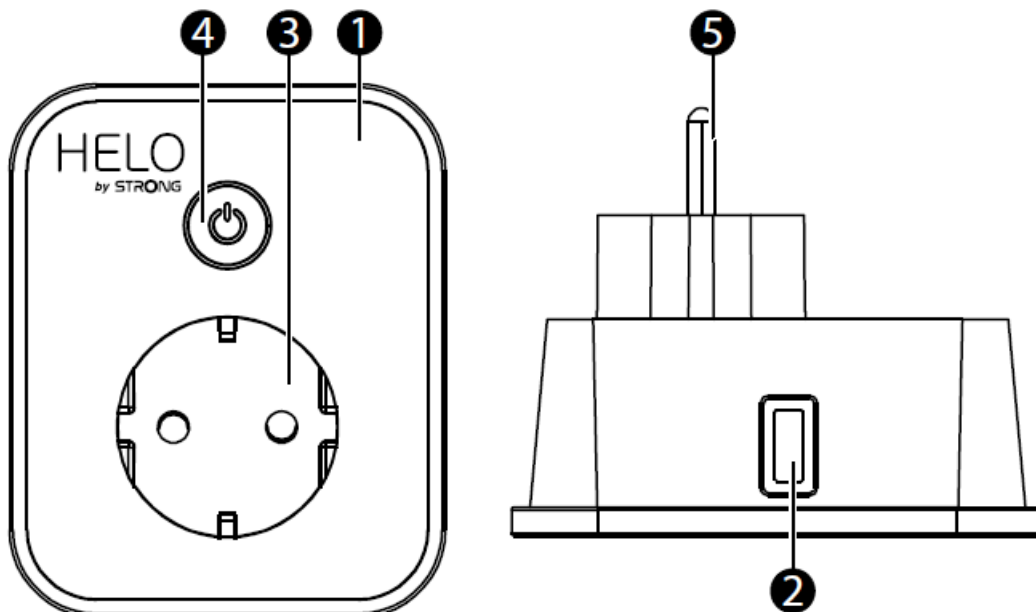
- 1x Smart Wi-Fi Power Plug 2x USB
- 1x User Manual

Usage Instructions

1. Download and install the Helo by Strong app on your smartphone or tablet.
2. Plug the HELO-PLUSB-EU Smart Wi-Fi Plug 2x USB into a power outlet.
3. Open the Helo app and follow the on-screen instructions to connect the plug to your home Wi-Fi network.
4. You can now use the app to control the plug and any devices connected to it, such as lamps or appliances.
5. You can also use voice commands with compatible virtual assistants, such as Amazon Echo or Google Home, to control the plug and any connected devices.

FUNCTION DIAGRAM

1. Smart Power unit
2. USB ports
3. Socket
4. Interrupter
5. Plug



SPECIFICATIONS

- Power supply AC 230 V – 50 Hz
- Max. power 3680 W
- Power connection only 16 A max.
- USB connection only 5 V/ 2.4 A max.
- Ports 2 USB / 1 AC Outlet
- Wi-Fi standard 2.4 GHz (make sure your router supports 2.4 GHz if it has two bands)
- Ambient temperature during operation 0 °C – 35 °C
- Storage temperature -10 °C – +60 °C
- Ambient humidity during operation 5% (0 °C) ~ 75% (35 °C) RH
- WLAN Specification
 - **Standard:** 802.11 b/g/n
 - **Encryption:** WEP / WPA / WPA2
 - **Frequency range:** 2412 – 2472 MHz
 - **Max. transmit power:** 802.11b : +18 dBm
 - **802.11g:** +16 dBm
 - **802.11n (20 MHz):** +14 dBm
 - **Channel:** 1-13

HOW TO CONNECT TO WI-FI?

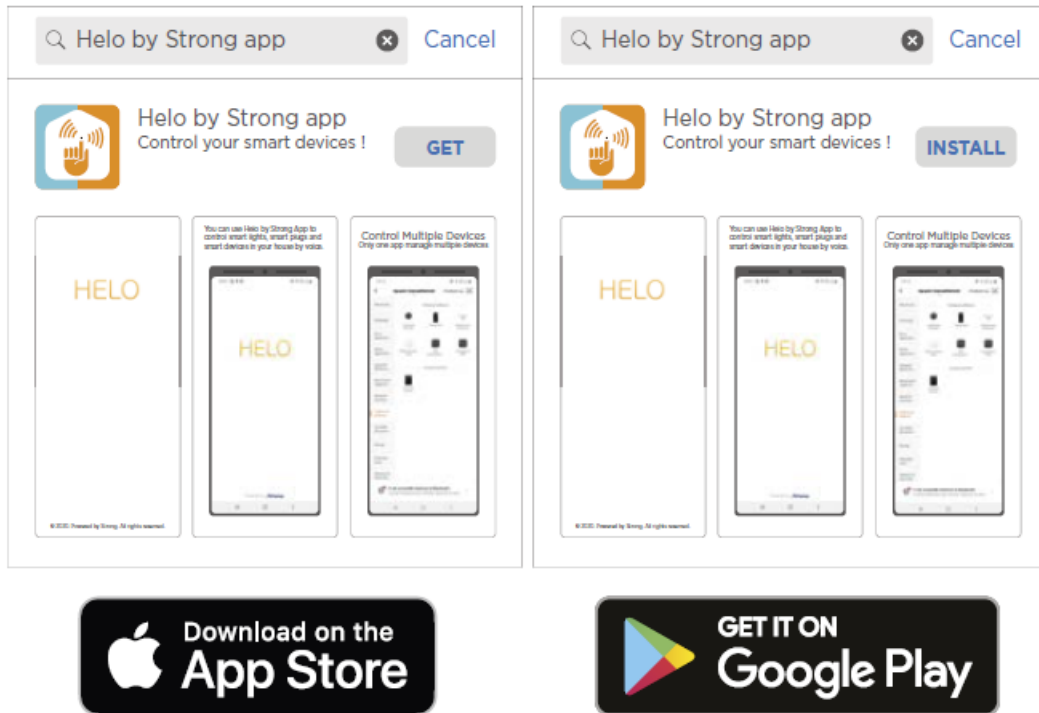
Step 1: Download and registration

- Scan the QR code to download the “Helo by Strong” app. Or search for «Hello by Strong» in the Apple Store or

Google Play to install the app.

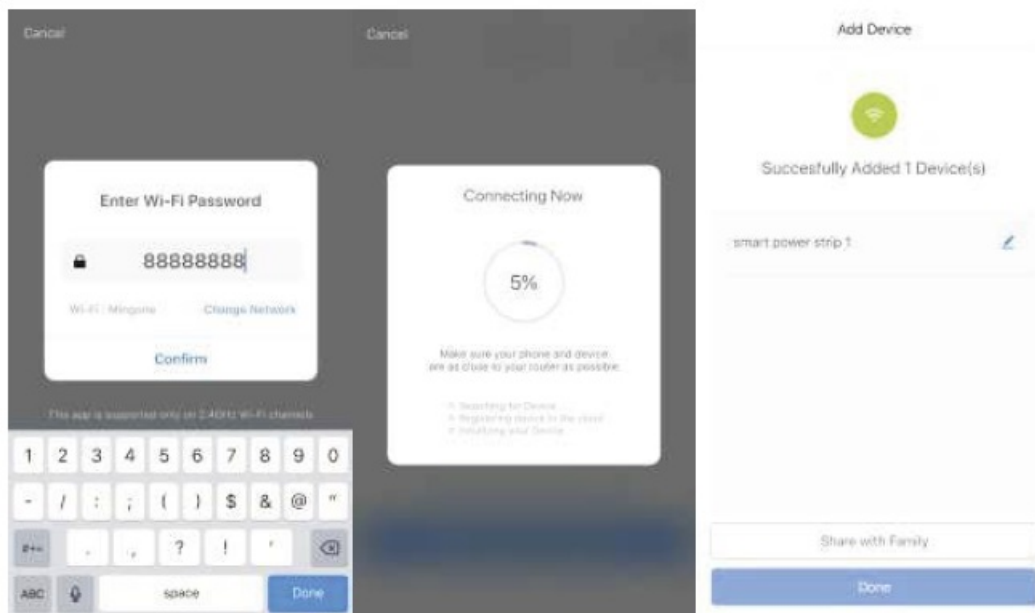


- Open the app «Helo by Strong», and press «Register» to get an account with your e-mail. Log in to the app.



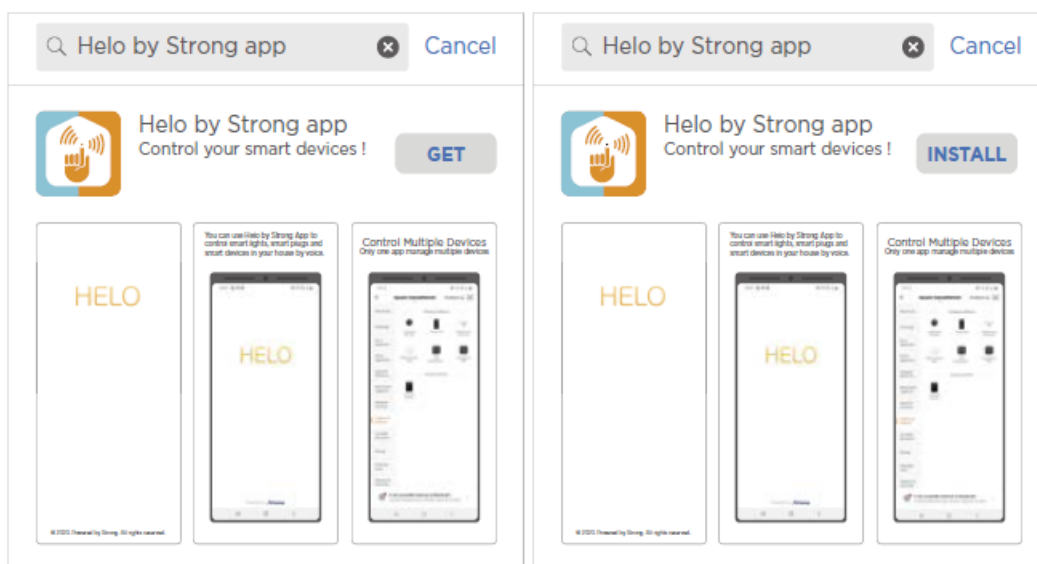
Step 2: Add devices in Easy Mode (recommended)

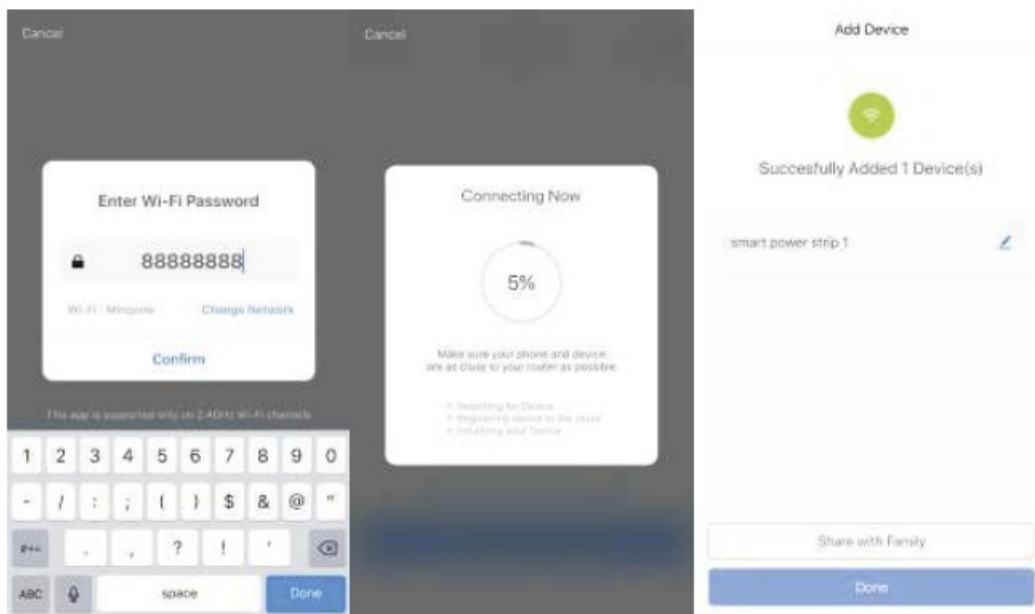
- Make sure your Smart Wi-Fi Power Plug is turned on
- Make sure your mobile phone is connected to your Wi-Fi
- Press the power button for more than 5 seconds until the indicator starts flashing rapidly (about 2 times per second). This means that the device is ready for configuration.
- Open the app «Hello by Strong», and press the «+» at the top right of the app
- Select Device type, and press «confirm indicator flashes fast». It retrieves the password for the Wi-Fi network to which the mobile phone is connected.
- Press «Confirm» to connect the device. When “Add 1 device” appears, the connection is complete and your device appears in your app list.



Add devices in AP mode (If failed in Easy Mode, user can use AP mode)

- Press the power button for more than 5 seconds until the indicator starts flashing quickly, then press it for another 5 seconds until the indicator flashes slowly.
- Press «+» in the top right of the app.
- Press «AP Mode» on the top right, «confirm the indicator flashes slowly». It will fetch the password of Wi-Fi network where your mobile phone is connected.
- Press «Confirm» and «Connect Now» to go to the WLAN setting interface of the mobile phone.
- Select the Wi-Fi network named «Helo_xxx» to connect to it.
- Return to the «Helo by Strong» app and the connection will start automatically.
- When «Add 1 device» appears, the connection is complete and your device appears in your app list.





Step 3: Control your Smart Wi-Fi Power Plug via the Helo by Strong app anytime, anywhere

- Make sure the mobile phone and the Smart Wi-Fi Power Plug are all connected to the same network. Open the app and experience the great features you now have access to.

Step 4: Share your devices with friends or family after adding your devices

A quick guide to using Amazon Echo

Before using Amazon Echo to control your devices, make sure you meet the following conditions.

- Amazon Alexa App and account
- An Echo device, including Echo, Echo Dot, and Echo Tap
- Smart Wi-Fi Power Plug

Log in with the Helo by Strong account, add the device, then change the name to an easily recognizable word or phrase, such as «Bedroom plug», «Plug 1», etc.

Set up the Echo with the Amazon Alexa App

- Sign in with an Amazon account
- Press the Start page at the top left, press «Settings» and «Configure a new device»
- Select an Echo device and long press the button with the dot until the orange light appears and press «Continue»
- Select your Wi-Fi network and connect it to the device according to the instructions. This may take several minutes.

Activate the skills in the Alexa App. (Note: If a Helo by Strong account has been associated before, you can use it directly, or you can also press «Disable skills» to remove it).

- Press the Start page at the top left. Select «Skills»

- Search “Hello by Strong” and select “Helo by Strong”
- Press «Activate Skills» to activate Helo by Strong Skill. You will be redirected to the account link page.
- Enter your Helo by Strong account and password. Don’t forget to select the country/account your account belongs to.
- Press «Link now» to link your Helo by Strong account.
- Exit the page when “Alexa has been connected to Helo by Strong” appears.

Control your smart device via Echo (Echo must find your smart devices before controlling).

- You can say «Alexa, find devices» to the Echo, or you can also press «Discover devices» in the app to find the smart devices.
- Found devices are displayed in the list. (Note: Every time you change the name of devices on the Helo by Strong app, Echo needs to re-discover devices before you take control).

Now you can control your smart devices via Echo. You can use the following commands to control them (e.g.

- Alexa, turn to Plug 1 on/off
- Alexa, turn on the plug after 5 minutes

A quick guide to using Google Home

Sign in with Helo by Strong account, add the device, then change the name to a word or phrase that is easily recognizable, such as

Configure Google Home with the Google Home App

1. Make sure your Google Home is connected to power.
2. Open the Google Home app by tapping the app icon on your mobile device.
3. Press «ACCEPT» to accept the terms of service and privacy policy. Allow the Google Home app to access the device’s location to find and configure nearby devices.
4. Press «Sign in» and select one of the Google accounts you are already logged into on your mobile device. Or follow the instructions to sign in with a new Google Account.
5. The Google Home app scans nearby devices that have power and are ready to set up. Press «Configure» to configure your Google Home.
6. When the Google Home app is connected to the Google Home device, press «PLAY TEST SOUND», a test sound will be played to confirm that you are connected to the correct device. If you have heard the test sound, press «I heard it».
7. Select room (This will help you identify the unit when you want to cast to it). Select the Wi-Fi network to connect to your Google Home. If you want to retrieve the password automatically for this network on this device, press «OK», and fill in the password in the password field. You can also enter your password manually. Then press «CONTINUE».
8. If the Google Assistant is to answer your questions, you must log in to your Google account and then press «Sign up». Select the Google account you want to link to your Google Home device and then press «CONTINUE AS XXX». Enter the address where this Google Home is installed and select your default music

9. Press «SKIP TUTORIAL» to finish the setup. You can also press «CONTINUE» to see the tutorial for Google Home.

Due to the known bug of the Google Home app, you can only use one Google account to control «Home Control Action» if you log into the Google Home app with multiple Google accounts.

Now you can control your smart devices via Google Home. Try e.g. Smart Wi-Fi Power Plug. The supported voice commands are as shown below:

- **OK, Google.** Switch the smart plug on/off.
- **OK, Google.** Switch on the smart plug in 5 minutes.

(€ 0,12/Min. osterr. Festnetz)

+380 (44) 238 6150

Email: [support at@strong.tv](mailto:support@strong.tv).

Documents / Resources



HELO-PLUSB-EU
Smart Wi-Fi Plug 2x USB

User manual	Brúksanvísing
Benutzerhandbuch	Útvaldið af lífslíka
Manuale Utente	Náttúra og lífslíka
Manuel del usuario	Kortuð af lífslíka
Manual do utilizador	Þessi af lífslíka
Gebruiksaanwijzing	Náttúra af lífslíka
Brugermanual	Þessi af lífslíka
Roetboek	Þessi af lífslíka

Strong HELO-PLUSB-EU Smart Wifi Plug 2x USB [pdf] User Manual

HELO-PLUSB-EU Smart Wifi Plug 2x USB, HELO-PLUSB-EU, Smart Wifi Plug 2x USB, Smart Wifi Plug, Wifi Plug, Plug