



Stripe S700 Android-Based Smart Device User Manual

[Home](#) » [STRIDE](#) » Stripe S700 Android-Based Smart Device User Manual 

Contents

- [1 Stripe S700 Android-Based Smart Device](#)
- [2 Product Information](#)
- [3 Product Usage Instructions](#)
- [4 Package Contents](#)
- [5 Set-Up Instructions](#)
- [6 Reader Overview](#)
- [7 Charging LED Indicator](#)
- [8 Product Specification](#)
- [9 Troubleshooting](#)
- [10 Warranty](#)
 - [10.1 Caution & Important Notes](#)
- [11 FCC](#)
- [12 Documents / Resources](#)
 - [12.1 References](#)
- [13 Related Posts](#)

stripe

Stripe S700 Android-Based Smart Device



Product Information

- Product Name: S700
- Product Type: Android-based smart device
- Package Contents:
 - Device x1
 - USB-C to USB-C cable x1
 - Power Adaptor x1
 - Legal Sheet x1
- Supported SDKs: iOS & Android
- Functions:
 - Communication Interface
 - Power & Battery Charging
 - Swipe Speed Key Management
 - Encryption Algorithm
 - Operating System
- Product Size: N/A
- Product Weight: N/A
- Operating Temperature: N/A
- Operating Humidity: N/A

Product Usage Instructions

1. Connect the device to a power source using the USB-C to USB-C cable and Power Adaptor provided.
2. The Charging LED indicator will show the power state of the device:
 - Green – Fully charged with power cable connected
 - Blue (Pulse) – Charging

- LED off – Power cable disconnected
 - Yellow – Battery low (20% – 10%)
 - Red – Battery critically low (9%-1%)
 - Red LED off – Battery drained (1%)
3. Press and hold the Power button located on the rear view of the device for 2-3 seconds to switch on the device. The LCD display will show the device is powered on.
 4. Use the device for its intended purpose, which may include swipe functions, key management, and encryption algorithms.
 5. To access the power off menu, press and hold the Power button for 1 second. Tap Power off to switch off the device, or tap Restart to reboot the device.

Troubleshooting

Problems:

- The device cannot read your card successfully
- The device cannot read your card successfully through NFC
- The device has no response
- Device is frozen
- Device tampered

Recommendations:

If you experience any of the above problems, refer to the user manual or contact customer support for assistance.

Warranty

The product comes with a warranty. Refer to the legal sheet provided in the package for more information.

Caution & Important Notes

Refer to the user manual and legal sheet provided in the package for important information and warnings regarding product usage. The product contains licence-exempt transmitter(s)/receiver(s) that comply with Innovation, Science and Economic Development Canada's licence-exempt RSS(s). Operation is subject to certain conditions, including not causing interference and accepting any interference received.

FCC Caution Statement

This device complies with part 15 of the FCC Rules. Operation is subject to certain conditions, including not causing harmful interference and accepting any interference received, including interference that may cause undesired operation.

Industry Canada Statement

This device contains licence-exempt transmitter(s)/receiver(s) that comply with Innovation, Science and Economic Development Canada's licence-exempt RSS(s). Operation is subject to certain conditions, including not causing interference and accepting any interference received, including interference that may cause undesired operation of the device.

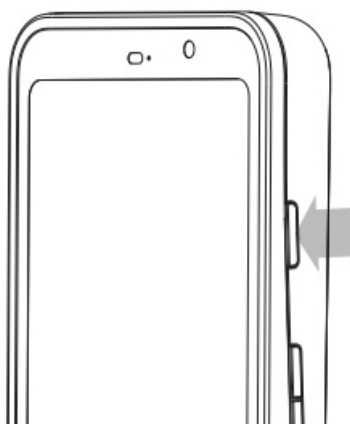
FCC and IC Specific Absorption Rate (SAR) Information

The device is designed to meet the requirements for exposure to radio waves established by the Innovation, Science and Economic Development Canada's and FCC. These requirements set a SAR limit of 1.6 W/kg averaged over one gram of tissue. The highest SAR value reported under this standard during product certification for use when properly worn on the body is 1.187W/kg.

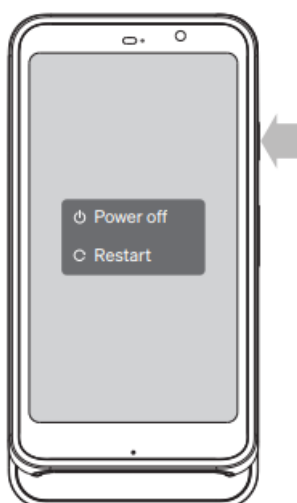
Package Contents

- **Device** x1
- **USB-C to USB-C cable** x1
- **Power Adaptor** x1
- **Legal Sheet** x1

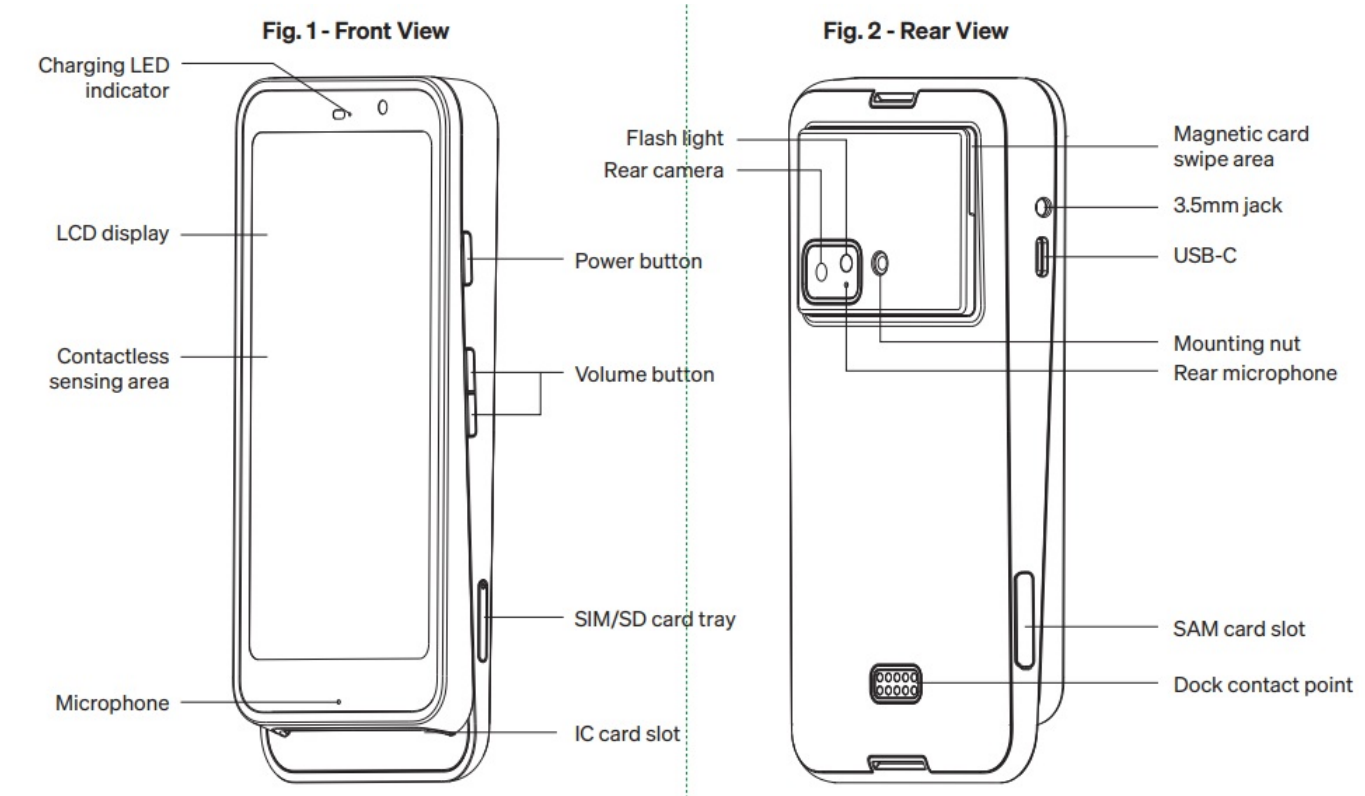
Set-Up Instructions










- Press and hold the "Power button" for 2-3 seconds to switch on the device.
- Press and hold the "Power button" for 1 second to access the power off menu.
- Tap "Power off" to switch off the device, or tap "Restart" to reboot the device.



Reader Overview



Charging LED Indicator

Power State	Charging LED indicator
Fully charged with power cable connected	 Green
Charging	 Blue (Pulse)
Device On, power cable disconnected	 LED off
Battery low (20% - 10%)	 Yellow
Battery critically low (9%-1%)	 Red
Battery drained (1%)	 Red
Device off	 LED off

Product Specification

Functions	<ul style="list-style-type: none">• EMV chip card reader (ISO 7816 compliant class A, B, C card)• Magnetic stripe card reader triple track (tracks 1, 2 & 3)• NFC Card Reader (EMV contactless, ISO 14443A/B)• Over-the-air software update• Over-the-air key update
-----------	--

Communication Interface	Bluetooth® 5.0, USB
Power & Battery	Lithium polymer rechargeable battery 4,950 mAh, 3.87V
Charging	via USB-C or Dock contact points
Swipe Speed	15cm/sec – 100cm/sec
Key Management	DUKPT, MK/SK
Encryption Algorithm	TDES, AES
Operating System	Android 10
Product Size	161.5 × 81.5 × 22mm / 6.36 × 3.21 × 0.87inch (approx.)
Product Weight	320g / 11.3oz (approx.)
Operating Temperature	0°C – 45°C (32°F – 113°F)
Operating Humidity	Max 95%
Operating Temperature	-20°C – 55°C (-4°F – 131°F)

Operating Humidity	Max 95%
--------------------	---------

Troubleshooting

Problems	Recommendations
Device cannot read your card successfully	<ul style="list-style-type: none"> • Please check if the device has power when operating and ensure devices are connected. • Please check if the application instructs to swipe or insert card. • Please ensure that there is no obstacle in the card slots. • Please check if the magstripe or chip of the card is facing the right direction when swiping or inserting card. • Please swipe or insert card with a more constant speed.
Device cannot read your card successfully through NFC	<ul style="list-style-type: none"> • Please check if your card supports NFC payment. • Please ensure if your card is placed within 4 cm range on top of the NFC marking. • Please take out your NFC payment card from wallet or purse for payment to avoid any interference.
Device has no response	<ul style="list-style-type: none"> • Please check if the device is fully charged. • Please restart the device for retry.

Device is frozen	<ul style="list-style-type: none"> • Please hold the power button for 12 seconds to restart.
Device tampered	<ul style="list-style-type: none"> • A tampered device will trigger the self-protection mechanism by removing security keys data from the device and the device will stop operating. • If the device is tampered, upon boot you will see a red watermark message indicating a tamper state. • Contact your service provider for more information.

Warranty

- Any damage or defects caused by a failure to follow the instruction which relate to this device or as the result of an accident, abuse, misuse, misapplication, product modification, improper voltage or current, acts of God, shipping damages or loss, or damage caused by service performed by anyone other than our company are expressly excluded from the warranty stated below.
- Please contact the dealer for any warranty or customer support services. Any repair of the device by yourself will void the warranty.
- Check stripe.com/legal/terminal-purchase for the warranty and legal terms.

Caution & Important Notes

- Ensure the device is fully charged before use.
- Please ensure magnetic stripe/EMV chip of the card is facing the right direction when swiping or inserting card.
- The NFC card should be tapped within 4cm range on top of the reader mark.
- Don't drop, disassemble, tear, open, crush, bend, deform, puncture, shred, microwave, incinerate, paint or insert foreign object into the device. Doing any of which will damage the device and void the Warranty.
- Don't immerse the device into water and place near washbasins or any wet locations.
- Don't spill food or liquid on the devices. Don't attempt to dry the device with external heat sources, such as microwave or hair dryer. Don't use any corrosive solvent or water to clean the device. Recommend using dry cloth to clean the surface only.
- Don't use any sharp tools to point the internal components, connectors or contacts, doing which may lead to device malfunction and void the Warranty simultaneously.
- Risk of explosion if battery is damaged or removed . Dispose of used batteries according to the instructions.

California Proposition 65 Warning

FCC

Caution Statement

- FCC Supplier's Declaration of Conformity: S700
- Stripe, Inc.
- 354 Oyster Point Blvd, South San Francisco, CA 94080, USA
- Internet contact: info@stripe.com
- This device complies with part 15 of the FCC Rules.

Operation is subject to the following two conditions:

- This device may not cause harmful interference,
- this device must accept any interference received, including interference that may cause undesired operation.
Warning: Any Changes or modifications not expressly approved by the party responsible for compliance could void the user's authority to operate the equipment.
- **Note:** This equipment has been tested and found to comply with the limits for a Class B digital device, pursuant to part 15 of the
- FCC Rules. These limits are designed to provide reasonable protection against harmful interference in a residential installation. This equipment generates uses and can radiate radio frequency energy and, if not installed and used in accordance with the instructions, may cause harmful interference to radio communications. However, there is no guarantee that interference will not occur in a particular installation. If this equipment does cause harmful interference to radio or television reception, which can be determined by turning the equipment off and on, the user is encouraged to try to correct the interference by one or more of the following measures:
 - – Reorient or relocate the receiving antenna.
 - – Increase the separation between the equipment and receiver.
 - – Connect the equipment to an outlet on a circuit different from that to which the receiver is connected.
 - – Consult the dealer or an experienced radio/TV technician for help.
- S700 meets the government's requirements for exposure to radio waves.
- The guidelines are based on standards that were developed by independent scientific organizations through periodic and thorough evaluations of scientific studies.
- The standards include a substantial safety margin designed to assure the safety of all persons regardless of age or health.

Industry Canada Statement

- This device contains license-exempt transmitter(s)/receiver(s) that comply with Innovation, Science, and Economic Development Canada's license-exempt RSS(s). Operation is subject to the following two conditions:
1. This device may not cause interference.
 2. This device must accept any interference, including interference that may cause undesired operation of the

device. Operation in the band 5150–5250 MHz is only for indoor use to reduce the potential for harmful interference to co-channel mobile satellite systems.

FCC and IC Specific Absorption Rate (SAR) information:

- The device is designed to meet the requirements for exposure to radio waves established by the Innovation, Science and Economic Development Canada and FCC. These requirements set a SAR limit of 1.6 W/kg averaged over one gram of tissue. The highest SAR value reported under this standard during product certification for use when properly worn on the body is 1.187W/kg. CE, UKCA & WEEE Statement

Specific Absorption Rate (SAR) information:

- The EU SAR limit For Body Worn is 2.0W/kg and For Limb is 4.0 W/kg. This device should keep a 5mm separation distance for Body-worn testing and 0mm for Limb SAR testing. The Maximum Body SAR is 0.233 W/kg; The Maximum Limb SAR is 0.504W/kg.
- This product has been confirmed to comply with the Council Directive 2014/53/EU Frequency Bands & Transmitted (Power).

Simplified EU Declaration of Conformity

- Hereby, Stripe, Inc. declares that the radio equipment type (S700) is in compliance with Directive 2014/53/EU. The full text of the EU Declaration of conformity is available at the following internet address: <https://stripe.com/s700/DoC>.
- Operation in the band 5150–5350 MHz is only for indoor use to reduce the potential for harmful interference to co-channel mobile satellite systems. This restriction applies in AT, BE, BG, CH, CY, CZ, DK, DE, EE, EL, ES, FI, FR, HR, HU, IE, IS, IT, LI, LT, LU, LV, MT, NL, NO, PL, PT, RO, SE, SI, SK, TR, UK (NI).

Simplified UKCA Declaration of Conformity

- Hereby, Stripe, Inc. declares that the radio equipment type (S700) is in compliance with UKCA Radio Regulations. The full text of the UKCA Declaration of conformity is available at the following internet address: <https://stripe.com/s700/DoC>.
- Operation in the band 5150–5350 MHz is only for indoor use to reduce the potential for harmful interference to co-channel mobile satellite systems. This restriction applies in the UK.
- The WEEE symbol on the product or its packaging indicates that this product must not be disposed of with your other household waste. Instead, it is your responsibility to dispose of your waste equipment by handing it over to a designated collection point for the recycling of waste electrical and electronic equipment. The separate collection and recycling of your waste equipment at the time of disposal will help conserve natural resources and ensure that it is recycled in a manner that protects human health and the environment. For more information about where you can drop off your waste for recycling, please contact your local authority, or where you purchased your product.

Japan JTBL

- Warning: W52, W53 are for indoor use only. Except for connection to the Base station or Land mobile relay stations for a 5.2 GHz band high-power data communication system
- Product Name: S700
- 5V DC 1.5A, 9V DC 1.5A
- FCC ID: 2A2ES-STR70
- IC: 28493-STR70
- IC Statement: CAN ICES-3 (B)/NMB-3(B)
- © 2023 Stripe, Inc.
- For full regulatory information, including the e-label, go into Settings > About Device > Regulatory.
- For License agreements, visit <https://stripe.com/legal/terminal-device-eula>.
- For devices purchased directly from Stripe, for warranty and purchase terms, visit <https://stripe.com/legal/terminal-purchase>.
- For devices purchased from an authorized reseller, please contact the reseller for warranty and legal terms.
- Operation Frequency (MHz)
- Max Radio-frequency power transmitted in the frequency band – EIRP(AVG)
- **BT** 2402 – 2480 MHz 10 dBm
- **BLE** 2402 – 2480 MHz 6 dBm
- **WiFi** 2.4G 2412 – 2472 MHz 16 dBm
- **WiFi** 5G 5180 – 5700 MHz 17.5 dBm
- **WiFi** 5G 5745 – 5825 MHz 14 dBm
- **NFC** 13.56MHz -19.89 dBuA/m
- Legal Sheet
- 472mm x 183mm
- **Material:** 80gsm C2S art paper
- **Finishing:** Matte AQ
- **Printing:** CMYK, K=100%, non-mineral ink
- **Folding:** Accordion
- **General Notes:** All special colors specified are from PANTONE® Matching System unless otherwise stated.
- The colors on this printout are not accurate and are intended to be used as a guide.
- Do not use it for matching purposes unless otherwise stated.
- ©2023 Stripe, Inc., All rights reserved. iOS is the trademark of Apple Inc. Android™ is a trademark of Google Inc.
- The Bluetooth® word mark and logos are registered trademarks owned by Bluetooth SIG, Inc. and any use of such marks by Stripe, Inc., is under license. Other trademarks and trade names are those of their respective owners. All details are subject to change without prior notice.
- www.stripe.com/terminal

Documents / Resources



[Stripe S700 Android-Based Smart Device](#) [pdf] User Manual
S700 Android-Based Smart Device, S700, Android-Based Smart Device, Smart Device, Device

References

- [P65Warnings.ca.gov](https://www.p65warnings.ca.gov/)

Manuals+.