



# STIRLING STR-FLW10W Front Load Washing Machine User Guide

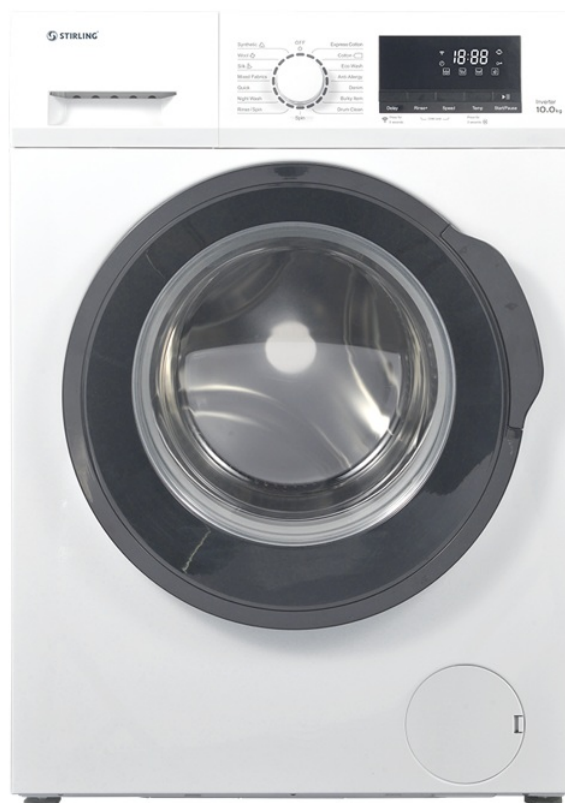
[Home](#) » [STIRLING](#) » STIRLING STR-FLW10W Front Load Washing Machine User Guide 



## Quick Start Guide

Model Number STR-FLW10W

Let's get your new 10 kg front load washing machine ready to use!



## Contents

- [1 Installing the machine](#)
- [2 Preparing a wash](#)
- [3 Control panel operation](#)
- [4 Afterwards](#)
- [5 Documents / Resources](#)
- [6 Related Posts](#)

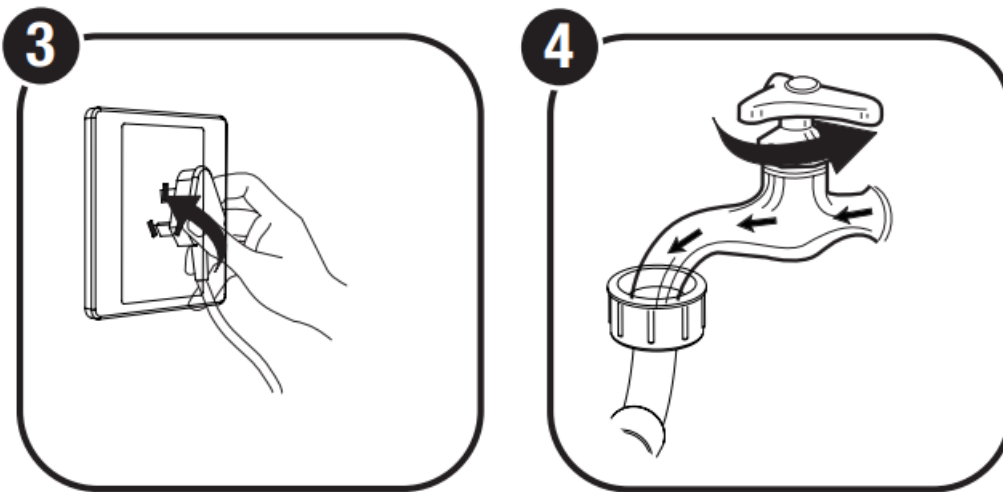
## Installing the machine

**CAUTION!** This washing machine is extremely heavy—transport it with care! A team lift or mechanical aid is required when moving it.

**IMPORTANT!** Before installing the washing machine, you must remove the transport bolts from the back of the housing and cover the holes with the transport hole caps provided. The four bolts hold the drum in place during transport but they must be removed before use so the drum can move during the wash and spin cycles. This washing machine must be installed by a competent person. Installation involves removing the transport bolts, levelling the machine, connecting it to your cold water supply and installing the drain hose. For detailed installation instructions, please consult the supplied instruction manual, which also has comprehensive usage instructions and important safety advice.

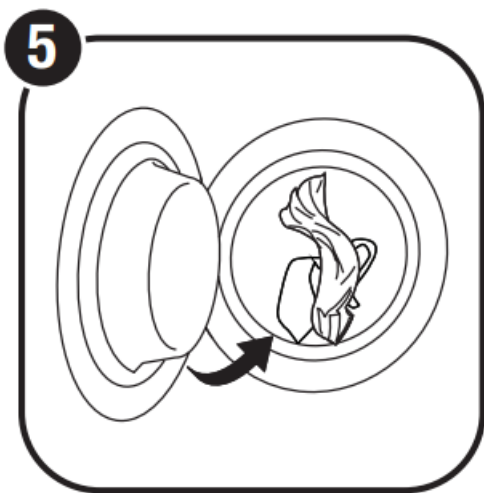
**NOTE:** Make sure the washing machine is properly and securely installed. Before using the washing machine for washing clothes, run a complete washing cycle without clothes using the drum clean program.

## Preparing a wash



Before washing a load, plug in the machine and open your water tap.

Load your washing into the machine—page 24 in the instruction manual has useful hints to help you with this. Close the door and add detergent to the drawer—find all the details on page 23 in the instruction manual.



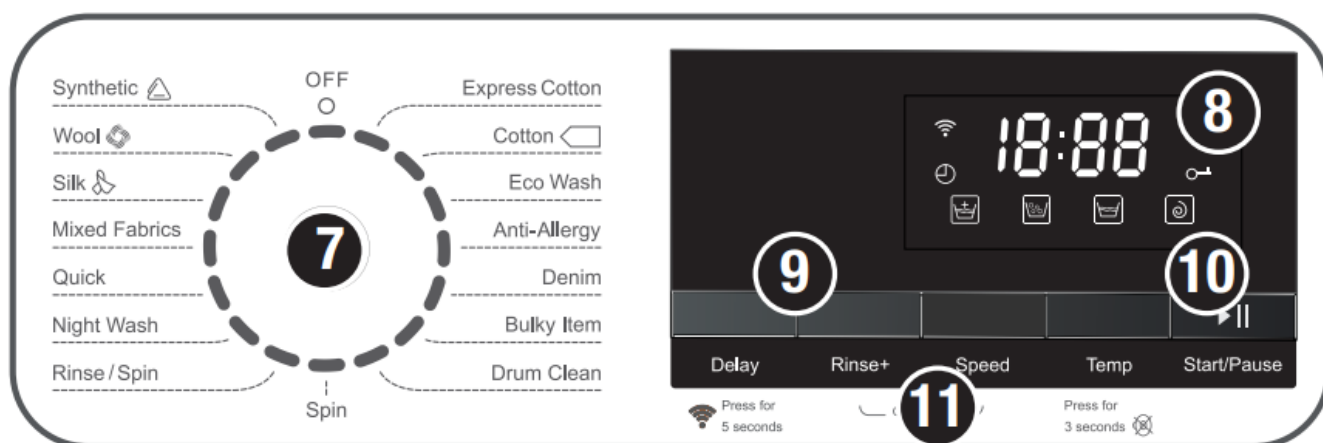
## Control panel operation

Rotate the program dial to switch on the machine, select a program and switch the machine off at the end. The display screen shows the settings, time remaining, options, codes, etc.

Use the buttons to set a delay start time or an extra rinse, or adjust the spin speed and water temperature.

Press the Start/Pause button to start a wash program or to pause it.

Press and hold a button, as instructed on the panel, to activate the Wi-Fi module or child lock, or to mute the alert sound.



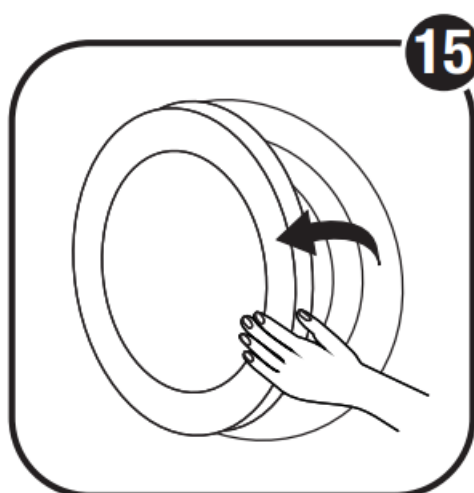
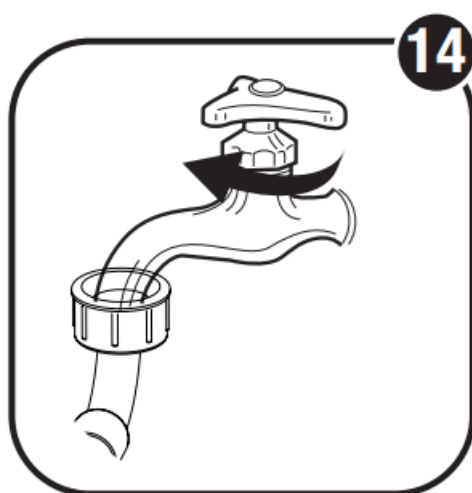
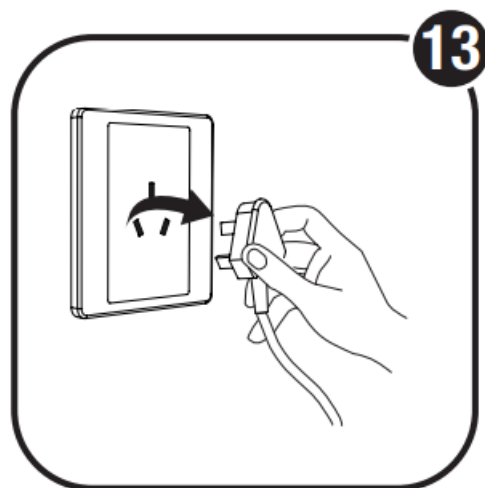
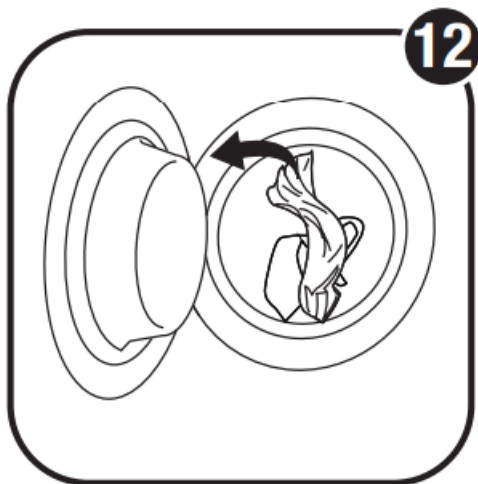
Turn over the page for details about the wash programs ...

## Afterwards


When the buzzer sounds you can open the door and take your washing out of the machine. The machine will automatically change into stand-by mode after 10 minutes of inactivity. Turn the dial back to the OFF [ O ] position. Unplug the power plug.

Close the water tap.

We recommend you leave the door slightly ajar so the drum can dry properly and to prevent mould and odour development.



Wash programs (default values in bold)

Program	Time (hr: min)	Temperature (°C)	Number of Rinses	Spin Speed (rpm)
Express Cotton	1:16	–/20/40/60/90	2/3/4/5	0/400/600/800/1000/1200/1400
Cotton 	3:17	–/20/40/60/90	2/3/4/5	0/400/600/800/1000/1200/1400
Eco Wash	0:49	20	2/3/4/5	0/400/600/800/1000/1200
Anti-Allergy	2:11	90	2/3/4/5	0/400/600/800/1000
Denim	1:40	–/20/40	4/5	0/400/600/800
Bulky Items	1:39	–/20/40/60	3/4/5	0/400/600/800
Drum Clean	1:14	60/90	2	800
Spin	0:11	—		0/400/600/800/1000/1200/1400
Rinse/Spin	0:16	—	1/2/3/4	0/400/600/800/1000/1200/1400
Night Wash	1:21	–/20/40/60	5	0/400/600/800
Quick	0:18	—	2/3/4	0/400/600/800/1000/1200
Mixed Fabrics	1:03	–/20/40/60	3/4/5	0/400/600/800/1000/1200/1400
Silk	0:48	–/20/40	2/3/4/5	0/400/600
Wool	0:50	–/20/40	2/3/4	0/400/600
Synthetics	0:51	–/20/40/60	2/3/4	0/400/600/800



Give us a call

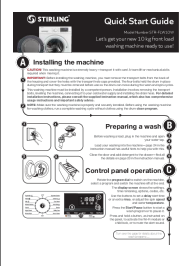
What? You mean this Quick Start Guide didn't have ALL the answers? The manual has more comprehensive instructions, or speak to us. Call our After Sales Support on 1300 112 534.



Well done, you made it! Now sit back and relax ... your new 10 kg front load washing machine with Wi-Fi function is automatically covered by a 3 year warranty.

V1.3

Documents / Resources

	<p><b><a href="#">STRILING STR-FLW10W Front Load Washing Machine</a></b> [pdf] User Guide</p> <p>STR-FLW10W Front Load Washing Machine, STR-FLW10W, Front Load Washing Machine, Load Washing Machine, Washing Machine, Machine</p>
---	--