



Storm NavBarTM With Audio Module User Guide

[Home](#) » [STORM](#) » Storm NavBarTM With Audio Module User Guide 

Contents

- [1 Storm NavBarTM With Audio Module](#)
- [2 Windows Utility](#)
- [3 Documents / Resources](#)
 - [3.1 References](#)
- [4 Related Posts](#)



Storm NavBarTM With Audio Module



Windows Utility

- System Requirements 2
- Using the Utility 4
- Customizing Key Codes 6

Change History

- The content of this communication and/or document, including but not limited to images, specifications, designs, concepts, data, and information in any format or medium is confidential and is not to be used for any purpose or disclosed to any third party without the express and written consent of Keymat Technology Ltd. Copyright Keymat Technology Ltd. 2022.
- Storm, Storm Interface, Storm AXS, Storm ATP, Storm IXP, Storm Touchless-CX, AudioNav, AudioNav-EF, and NavBar are trademarks of Keymat Technology Ltd. All other trademarks are the property of their respective owners Storm Interface is a trading name of Keymat Technology Ltd.
- Storm Interface products include technology protected by international patents and design registration. All rights reserved

System Requirements

The utility requires a .NET framework to be installed on the PC and will communicate over the same USB connection but via the HID-HID data pipe channel, no special drivers are required.

Compatibility

- Windows 11
- Windows 10

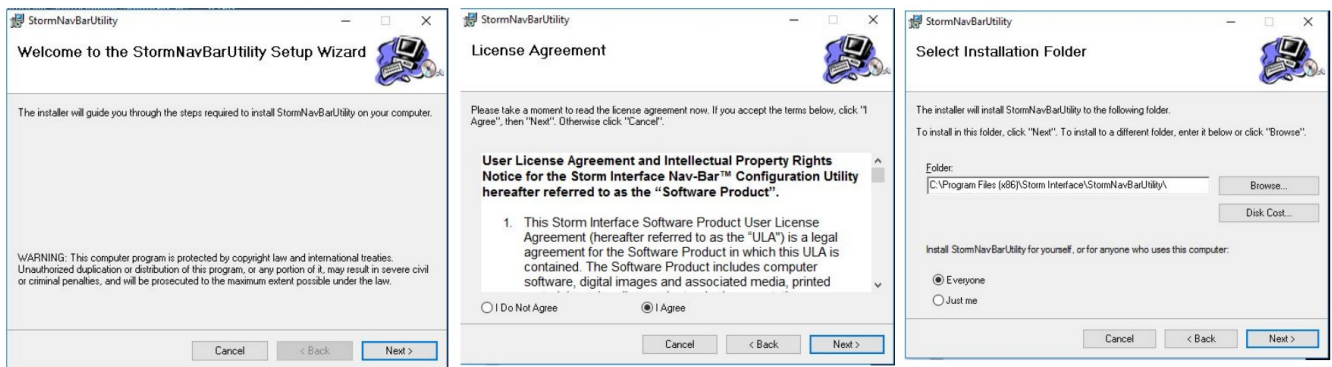
The utility can be used to configure the product for:

- LED brightness (0 to 9) 0 – off and 9 – full brightness.
- Load customised NavBar™ table.
- Write default values from volatile memory to flash.
- Reset to factory default.
- Load Firmware.
- JACK IN/OUT LED Control

Installing the Utility

To install the StormNavBarUtility click on the setup.exe (windows installer package) and follow the instructions below:

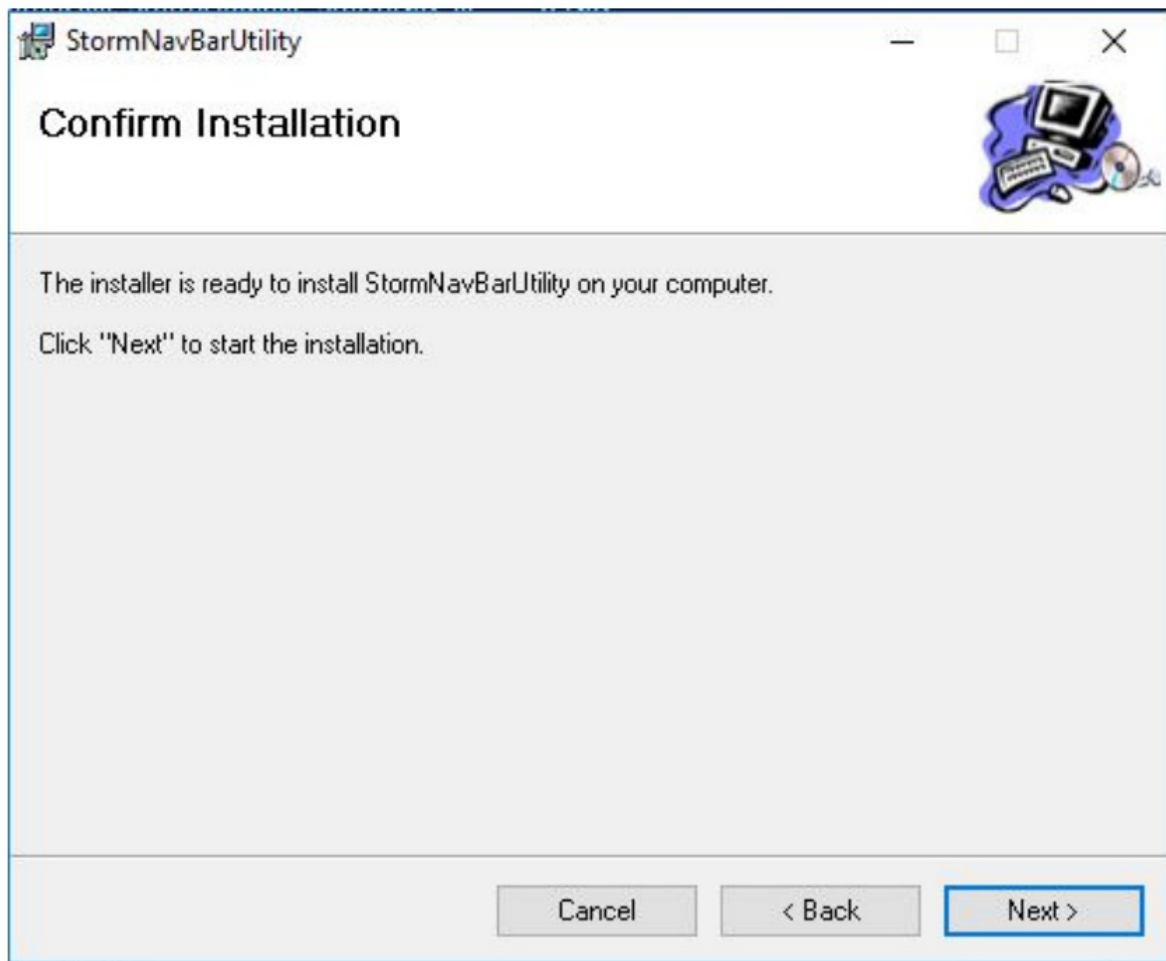
•



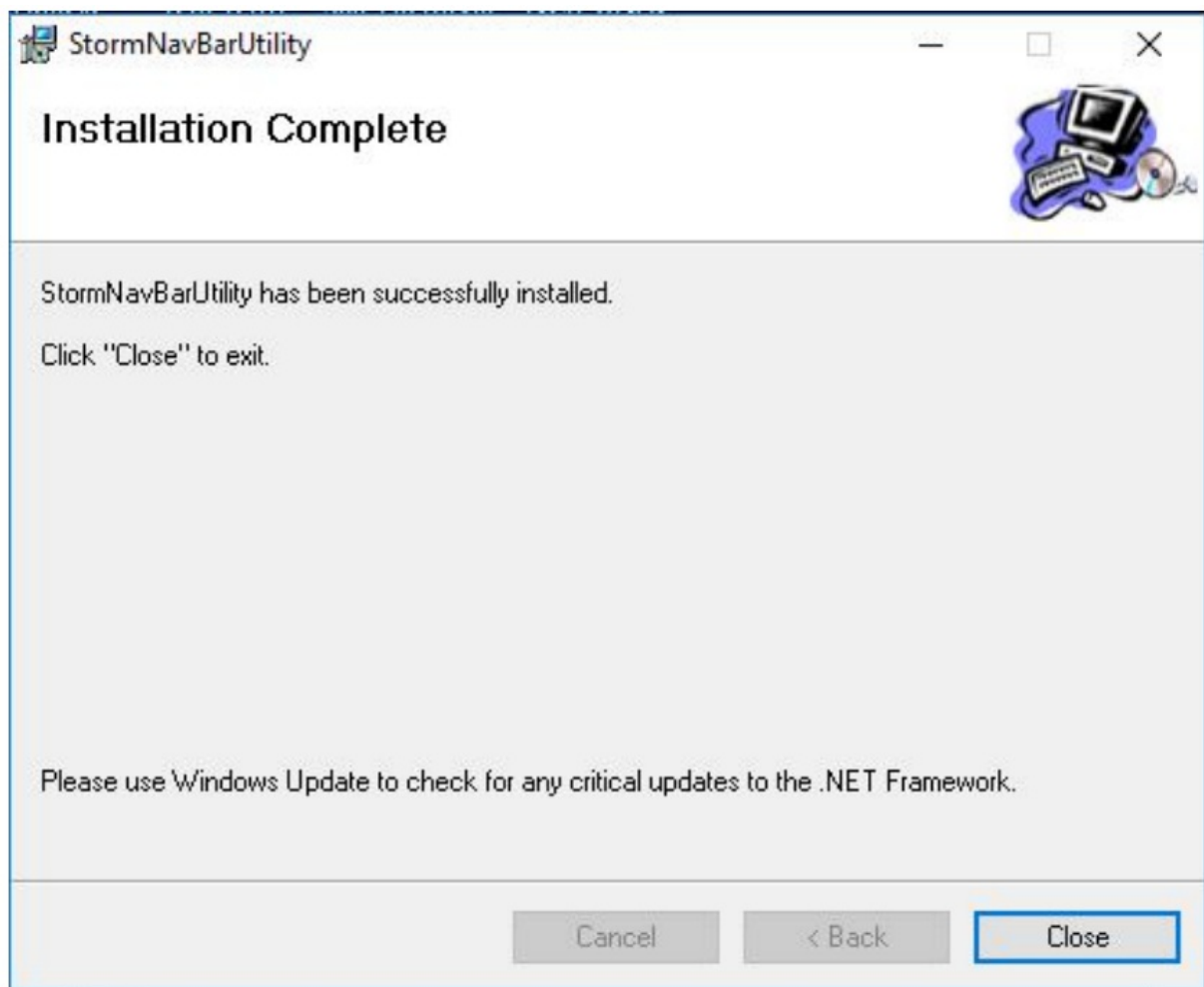
Click on “Next” to accept the license agreement.

- Select if you would like to install for just you or everyone and select location (Browse) if you do not want to install at the default location.
- Then click on “Next”.

Click on “Next” and the installation process will start.

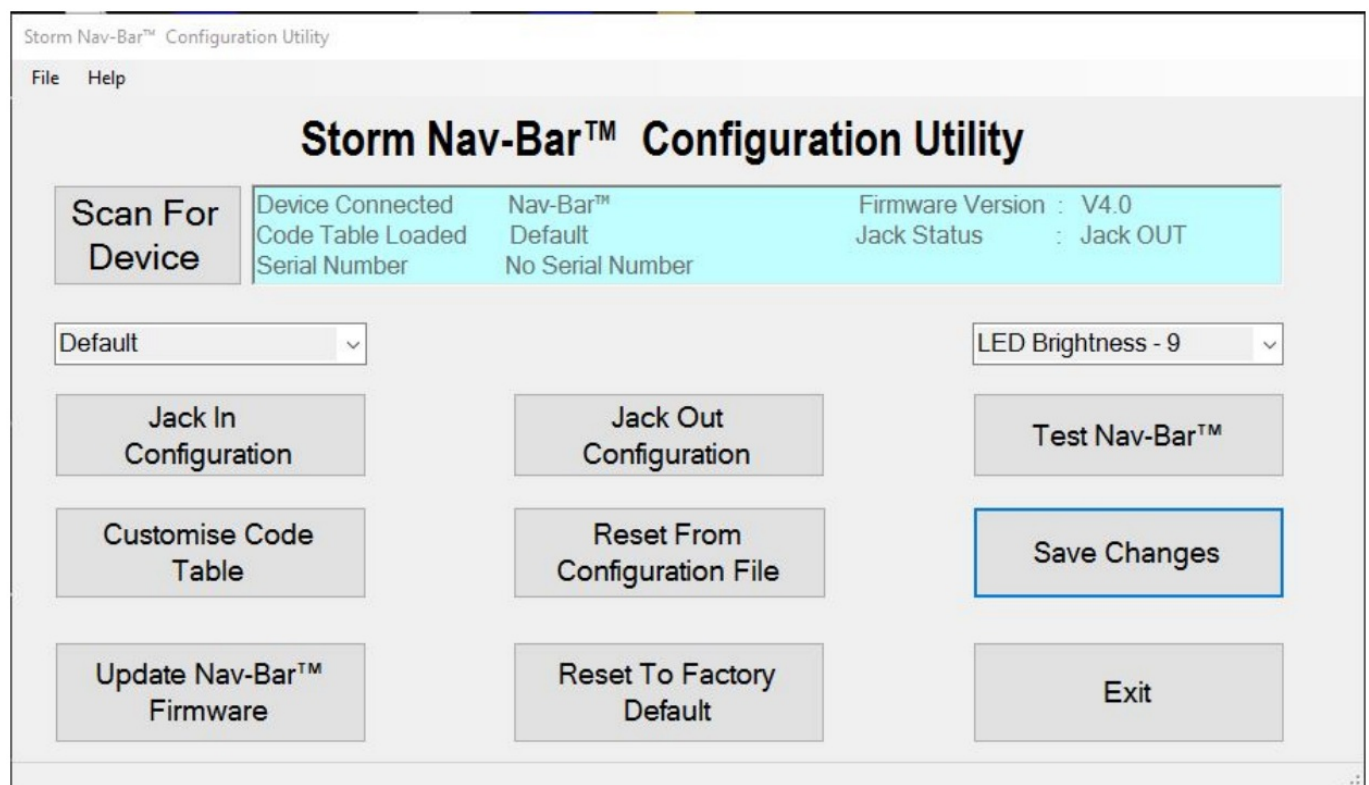


Click on "Close" for a successful installation.



Using the Utility

When the NavBar is connected it will be detected on the home screen.

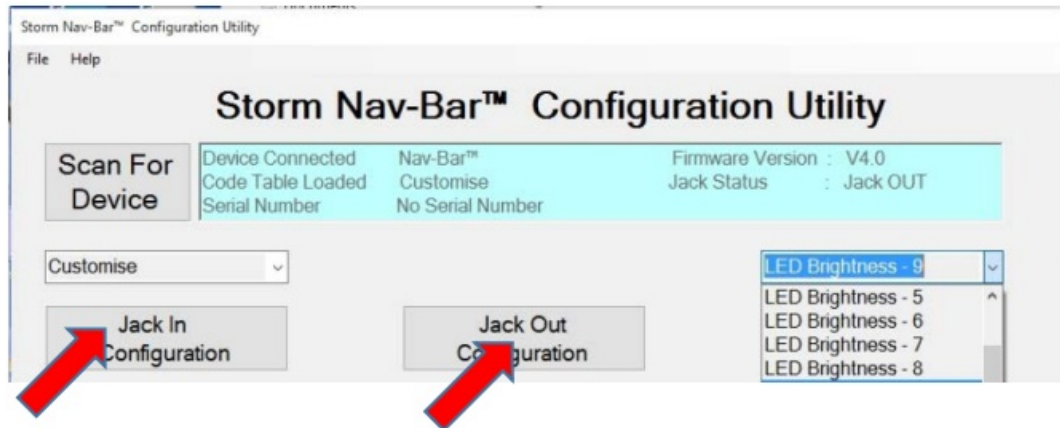


Changing the LED brightness

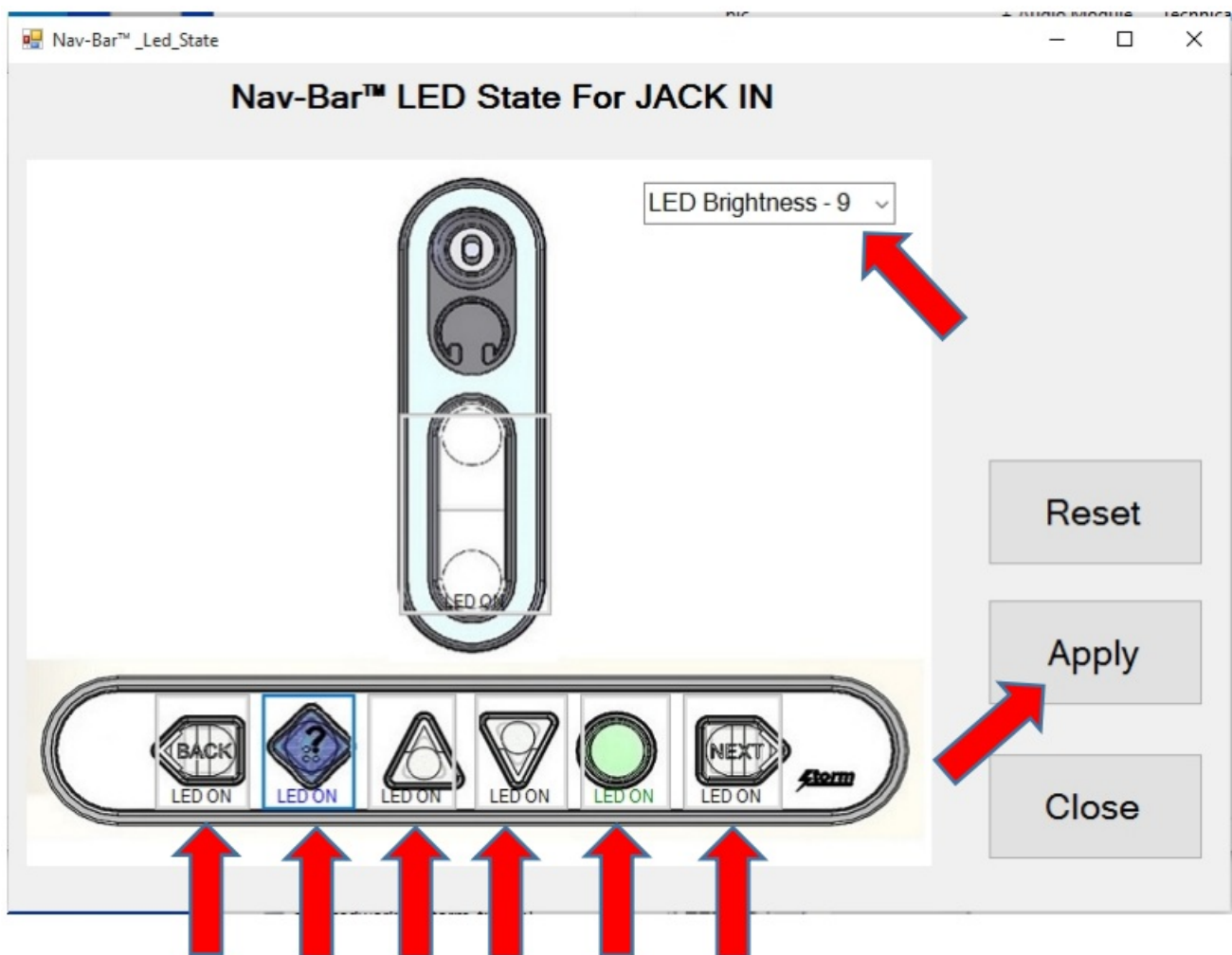
- The user can change the LED brightness from low to high by selecting the LED Brightness and selecting from 1 to 9.
- NB: Remember to save any required changes otherwise they will be lost when the application is closed or the NavBar™ is disconnected.

Jack In/Out Configuration

The user can select which LEDs are ON/OFF for Jack In. By selecting Jack In or Jack Out a sub-screen will appear. Click on the required buttons and the LED state will change ON <-> OFF. Then click on Apply to download the configuration to the keypad. If a Jack is plugged in, the LED state will be applied.



You can select which LEDs are ON/OFF for Jack In and Jack Out. Click to show the next screen.

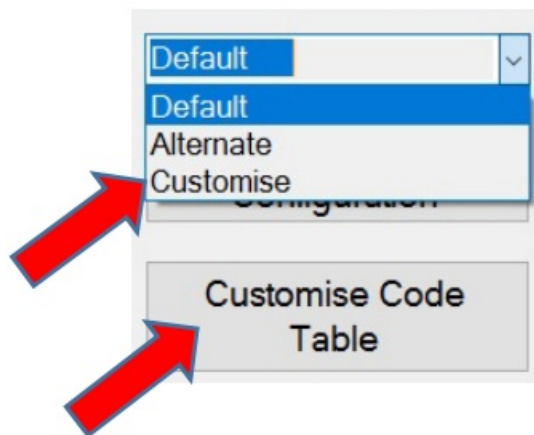


- Click on each key to change the LED state: ON <->OFF.
- The LED brightness can also be set for each key
- Click on Apply to download the configuration to the NavBar

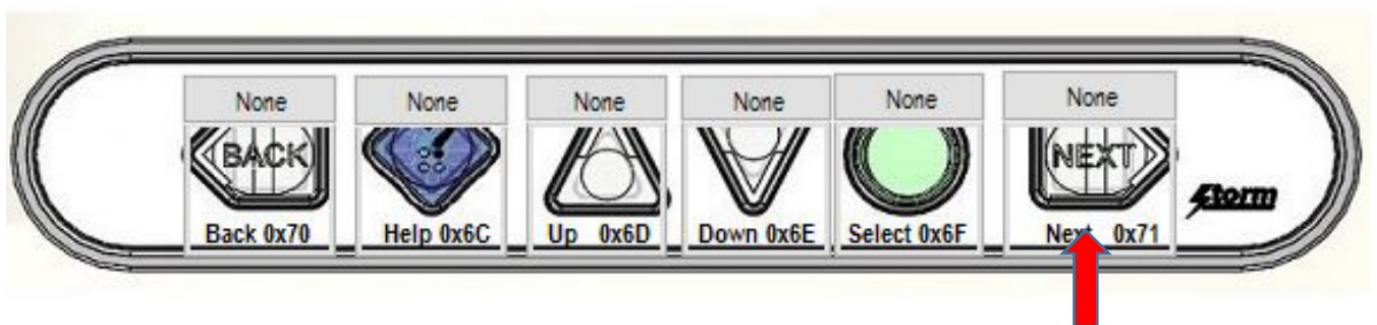
Customizing the Key Codes

The NavBar retains 3 stored Code Tables, the Code Table to be used can be selected from the drop-down.

- Factory Default
- Alternate
- Customized
- The Default and Alternate tables are shown on the next page. If you need specific key codes then use the Customised Table



- Select "Customised Table" then "Customise code" and the following is displayed
- showing the current USB Code (in hex) for each key of the product.
- Above each key is a button to show the modifier. As no codes have been changed, the buttons show None.



To customize a key, click on it and the "Select Code" combo box will appear.

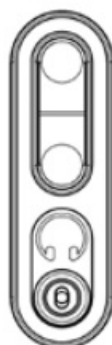
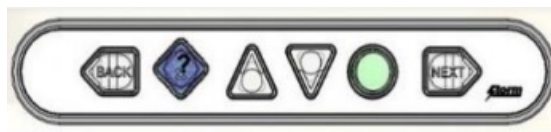
Select Code	
0x00	Reserved
0x01	ErrorRollOver
0x02	POSTFail
0x03	ErrorUndefined
0x04	a
0x05	b
0x06	c
0x07	d
0x08	e
0x09	f
0x0A	g
0x0B	h
0x0C	i
0x0D	i

Apply

- Select the code you require from the dropdown list
- Once a code is selected, the button's background color will display the new code selected.
- Repeat for the other keys
- Press Apply to send the new codes to the keypad

Don't forget to SAVE YOUR CHANGES

Default Key Code Table



LEGEND	TACTILE IDENTIFIER	LED COLOUR	USB (KEYCODE)	HEX CODES	DESCRIPTION
NavBar™					
	<	WHITE	F21	0x70	Back
?	∴	BLUE	F17	0x6C	EZ-Help
	^	WHITE	F18	0x6D	Up
	v	WHITE	F19	0x6E	Down
	O	GREEN	F20	0x6F	Action
NEXT	>	WHITE	F22	0x71	Next
Audio	Module				
		WHITE	F13	0x68	Volume Up
		WHITE	F14	0x69	Volume Down
In addition, the unit will also output keycodes for JACK IN and JACK OUT					
		WHITE	F15	0x6A	JACK IN
		WHITE	F16	0x6B	JACK OUT

Alternate Key Code Table

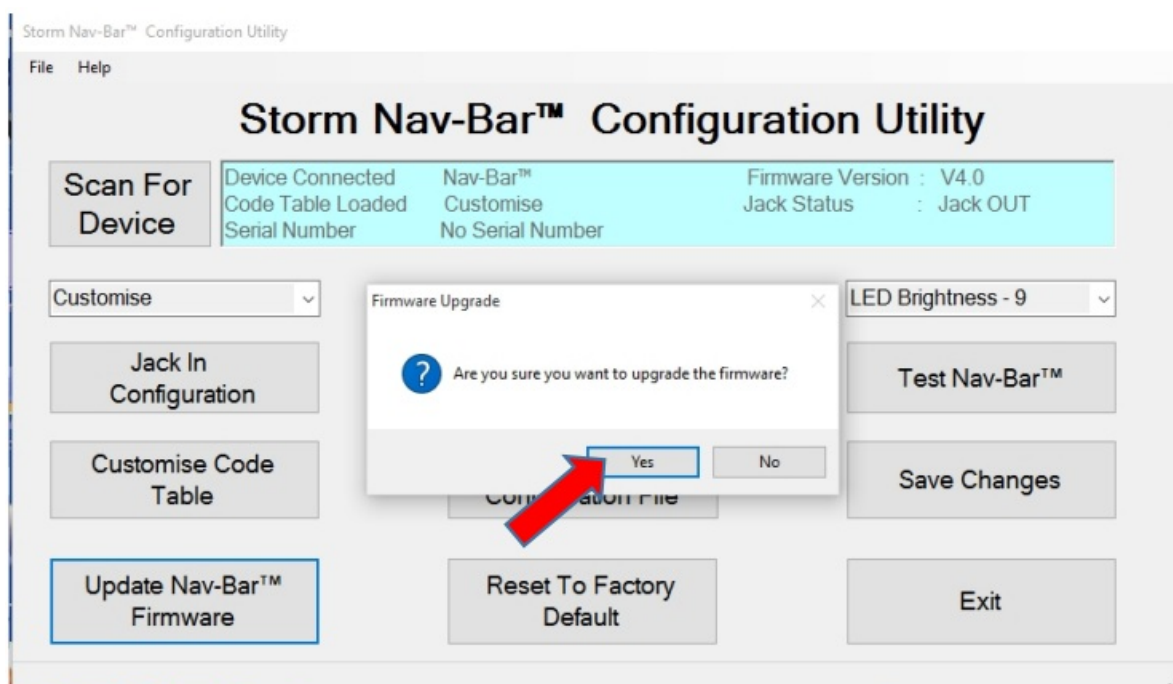


LEGEND	TACTILE IDENTIFIER	LED COLOUR	USB (KEYCODE)	HEX CODES	DESCRIPTION
NavBar™					
BACK	<	WHITE	F21	0x70	Back
?	∴	BLUE	F17	0x6C	EZ-Help
	^	WHITE	F18	0x6D	Up
	v	WHITE	F19	0x6E	Down
	O	GREEN	F20	0x6F	Action
NEXT	>	WHITE	F22	0x71	Next
Audio	Module				
		WHITE			Volume Up
		WHITE			Volume Down
In addition, the unit will also output keycodes for JACK IN and JACK OUT.					
		WHITE	F15	0x6A	JACK IN
		WHITE	F16	0x6B	JACK OUT

Upgrading the Firmware

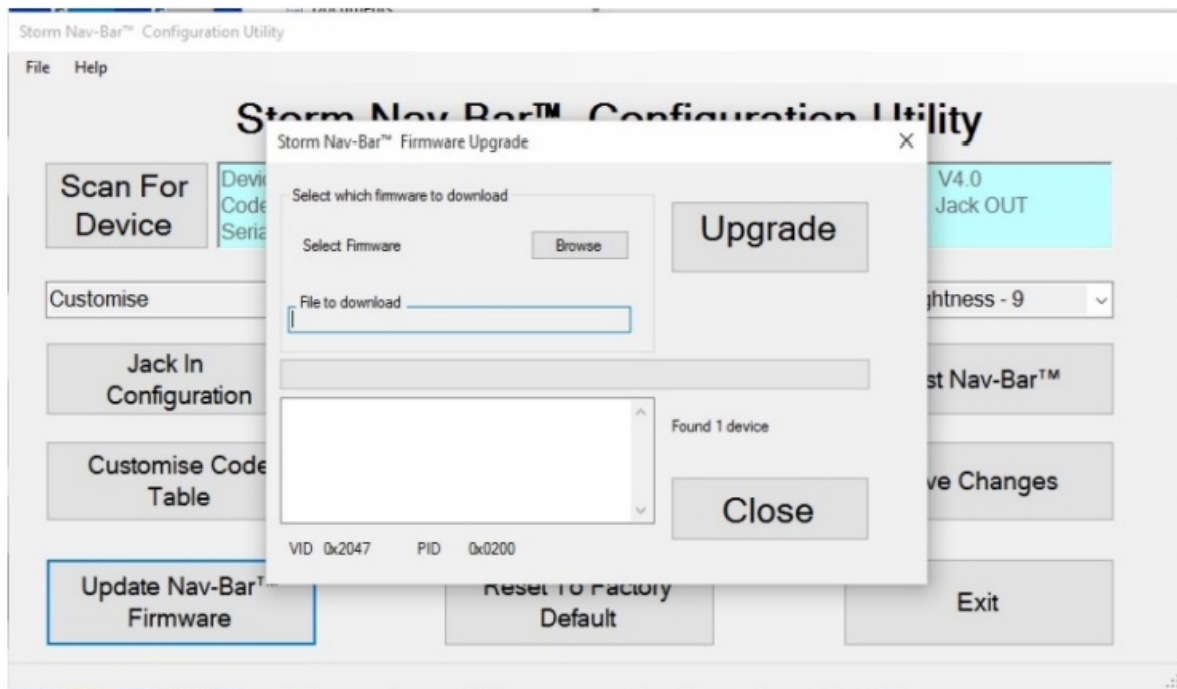
To upgrade the firmware, click on the “Update NavBar™ Firmware” button the screen below will be displayed

Click on “Yes”.



- After a few seconds, the “Browse” and “Upgrade” buttons will be enabled.

- (If both buttons are greyed out then reset the unit and retry)
- Click on the “Browse” button and navigate to the firmware file. Click “Open” to select.
- Then click on “Upgrade”.
- Do not disconnect the cable while the upgrade is in progress.



Once a unit has upgraded to the new firmware, the NavBar™ & Audio Module will auto reboot, and the new firmware version will be displayed on the utility.

Reset Procedure

- Unplug the USB cable for the NavBar™ from the PC, press the reset switch on NavBar™, and keep it pressed.
- (To press the switch use a paperclip in the access hole – see pages 7-8 for location) Plug the USB cable into the PC and let go of the switch. The “Browse” and “Upgrade” buttons should now be enabled.

Reset to factory defaults.


- Clicking on “Factory Default” will set the NavBar™ & Audio Module with values that are pre-set.
- NAVBAR™ – default table
- LED brightness – 9

Change History

Instructions for	<u>Date</u>	<u>Version</u>	<u>Details</u>
Configuration Utility	15 Aug 24	1.0	First Release (split out from Tech Manual)

Configuration Utility	<u>Date</u>	<u>Version</u>	<u>Details</u>
	17 Oct 16	1.0	First Release
	17 Nov 16	2.0	Updated
	09 Feb 17	3.0	Superscript Characters are removed from filenames so that the utility installs correctly on Windows 7
	16 Feb 17	5.0	Added fix for the install to Win 7 POS Ready O/S
	08 Sep 17	6.0	Added Win 10 Compatability
	21 Jan 20	7.0	Added support for NavBar SF
	1 Feb 22	7.1	New user agreement

Documents / Resources

 <p>Storm NavBarTM With Audio Module [pdf] User Guide</p> <p>NavBarTM With Audio Module, NavBarTM, With Audio Module, Audio Module, Module</p>	
---	--

References

- [User Manual](#)

[Manuals+](#), [Privacy Policy](#)

This website is an independent publication and is neither affiliated with nor endorsed by any of the trademark owners. The "Bluetooth®" word mark and logos are registered trademarks owned by Bluetooth SIG, Inc. The "Wi-Fi®" word mark and logos are registered trademarks owned by the Wi-Fi Alliance. Any use of these marks on this website does not imply any affiliation with or endorsement.