




Storm Interface EZ08-22301 NavPad Config Utility Instruction Manual

[Home](#) » [Storm Interface](#) » Storm Interface EZ08-22301 NavPad Config Utility Instruction Manual 

Contents

- [1 Storm Interface EZ08-22301 NavPad Config Utility](#)
- [2 Product Usage Instructions](#)
- [3 Using the NavPad Windows Utility](#)
- [4 System Requirements](#)
- [5 Installing the Utility](#)
- [6 Using the Utility](#)
- [7 Change History](#)
- [8 Documents / Resources](#)
 - [8.1 References](#)



Storm Interface EZ08-22301 NavPad Config Utility



Specifications

- Product Name: NavPad Config Utility
- Manufacturer: Keymat Technology Ltd
- Version: Rev 1.0
- Compatibility: Windows 11, Windows 10

Product Usage Instructions

System Requirements

The utility requires .NET framework to be installed on the PC and will communicate over the same USB connection but via the HID-HID data pipe channel, no special drivers are required.

Installing the Utility

1. Download the setup.exe (Windows installer package).
2. Run the setup.exe and follow the on-screen instructions:
 1. Click on Next.
 2. Select "I Agree" and Click on Next.
 3. Select installation preferences and location, then click on Next.
 4. Click on Next to start the installation process.
 5. Click on Close when installation is complete. A shortcut will be installed on the Desktop.

Using the Utility

1. Double-click on the shortcut to start the utility.
2. Connect the NavPad to a USB port.
3. The utility will detect the NavPadTM+ audio using the VID/PID.

If successful, all buttons will be enabled; otherwise, only Scan and Exit buttons will be active.

FAQ

- Q: What are the main features that can be configured using the NavPad Windows Utility?

A: The utility can be used to configure the product for LED On/Off, LED brightness (0 to 9), Buzzer On/Off, load customized keypad table, write default values from volatile memory to flash, reset to factory default, and load firmware.

- Q: Are special drivers required for the utility to communicate with the NavPad?

A: No, special drivers are not required. The utility communicates over the same USB connection via the HID-HID data pipe channel.

The content of this communication and / or document, including but not limited to images, specifications, designs, concepts, data and information in any format or medium is confidential and is not to be used for any purpose or disclosed to any third party without the express and written consent of Keymat Technology Ltd. Copyright Keymat Technology Ltd. 2022 .

Storm, Storm Interface, Storm AXS, Storm ATP, Storm IXP , Storm Touchless-CX, AudioNav, AudioNav-EF and NavBar are trademarks of Keymat Technology Ltd. All other trademarks are the property of their respective owners.

Storm Interface is a trading name of Keymat Technology Ltd

Storm Interface products include technology protected by international patents and design registration. All rights reserved

Using the NavPad Windows Utility

Note that there are 2 Windows Utility packages available for download:

- Standard NavPad
- Illuminated NavPad

Please ensure you use the correct one as shown below

If any other keypad utility software is installed (e.g EZ-Key Utility) then you should un-install that before you start.

Non illuminated NavPad utility

To be used with the following part numbers:

- EZ08-22301
- EZ08-22200
- EZ06-23001
- EZ08-23001
- EZ08-23200

Illuminated NavPad utility

To be used for the following part numbers:

- EZ06-43001
- EZ08-43001
- EZ08-43200

System Requirements

The utility requires .NET framework to be installed on the PC and will communicate over the same USB

connection but via the HID-HID data pipe channel, no special drivers are required.

Compatibility

- Windows 11 ✓
- Windows 10 ✓

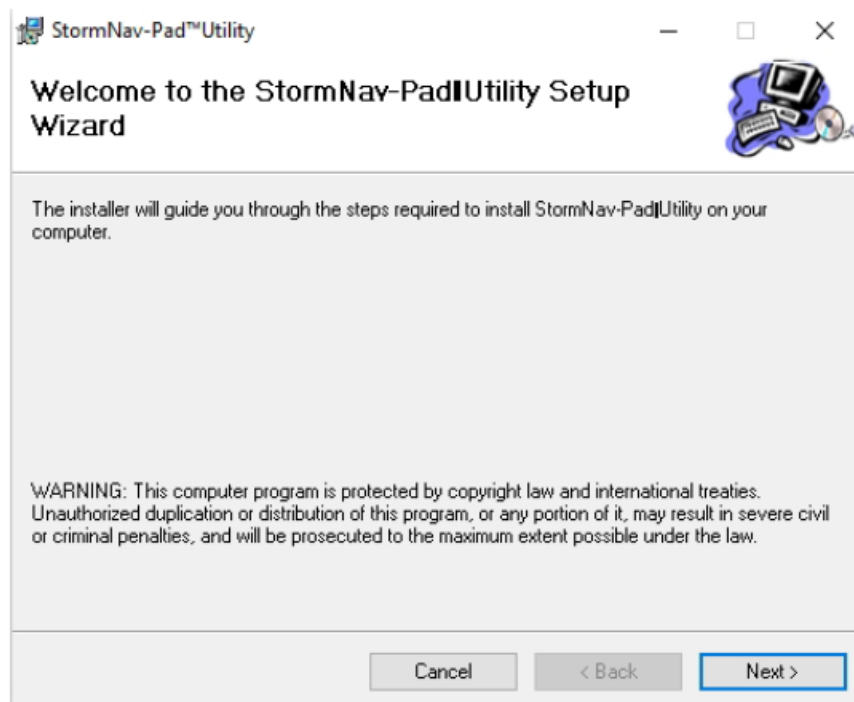
The utility can be used to configure the product for:

- LED On/Off
- LED brightness (0 to 9)
- Buzzer On/Off
- Buzzer Duration ($\frac{1}{4}$ to $2\frac{1}{4}$ seconds)
- Load customized keypad table
- Write default values from volatile memory to flash
- Reset to factory default
- Load Firmware

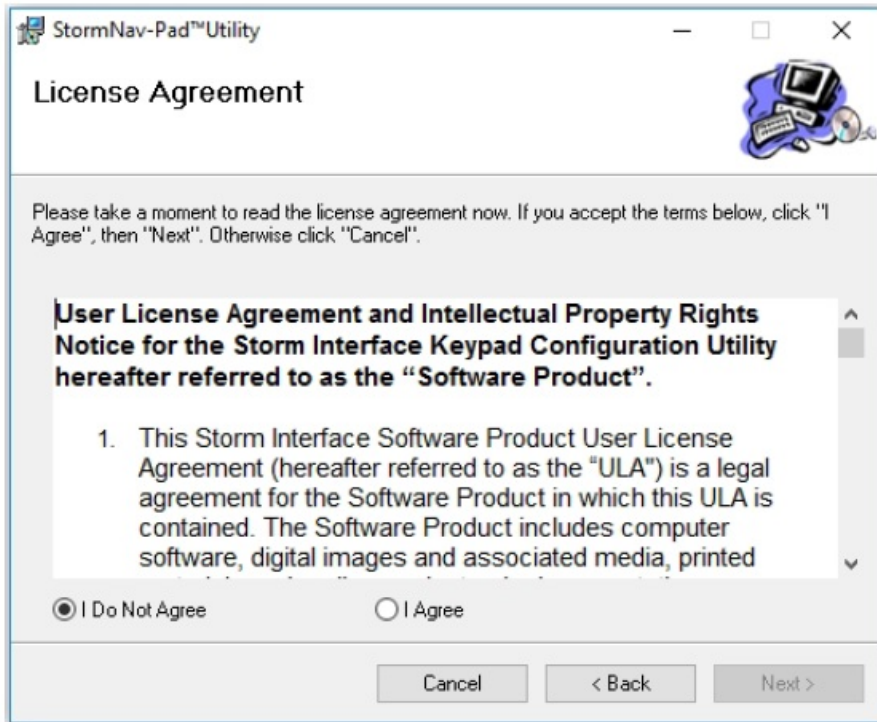
Note that non-audio versions also support multiple key press combinations.

Installing the Utility

To install click on the setup.exe (Windows installer package) and follow the instructions below:

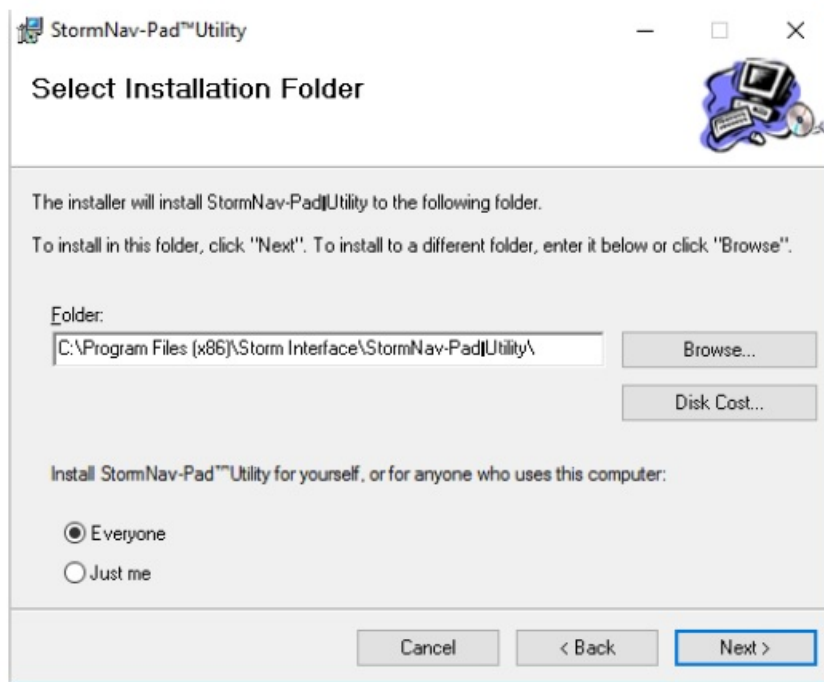


Click on “Next”

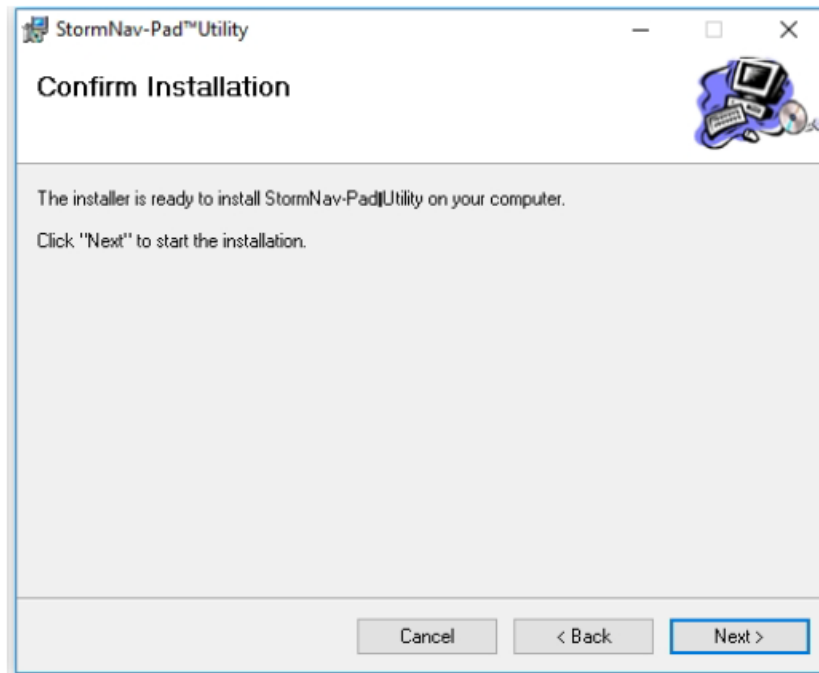


Select "I Agree" and Click on "Next"

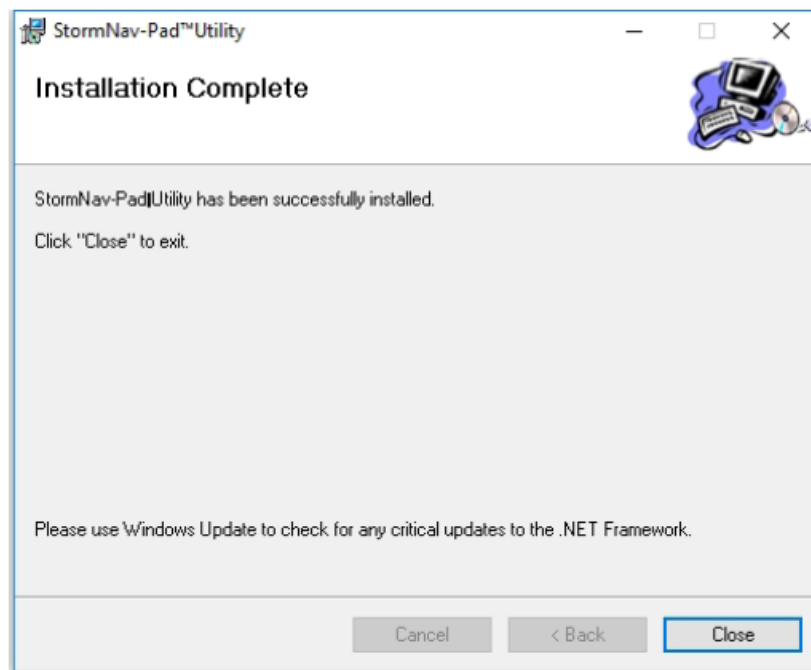
Select if you would like to install for just you or everyone and select a location if you do not want to install at the default location. Then click on "Next"



Click on "Next" and the installation process will start



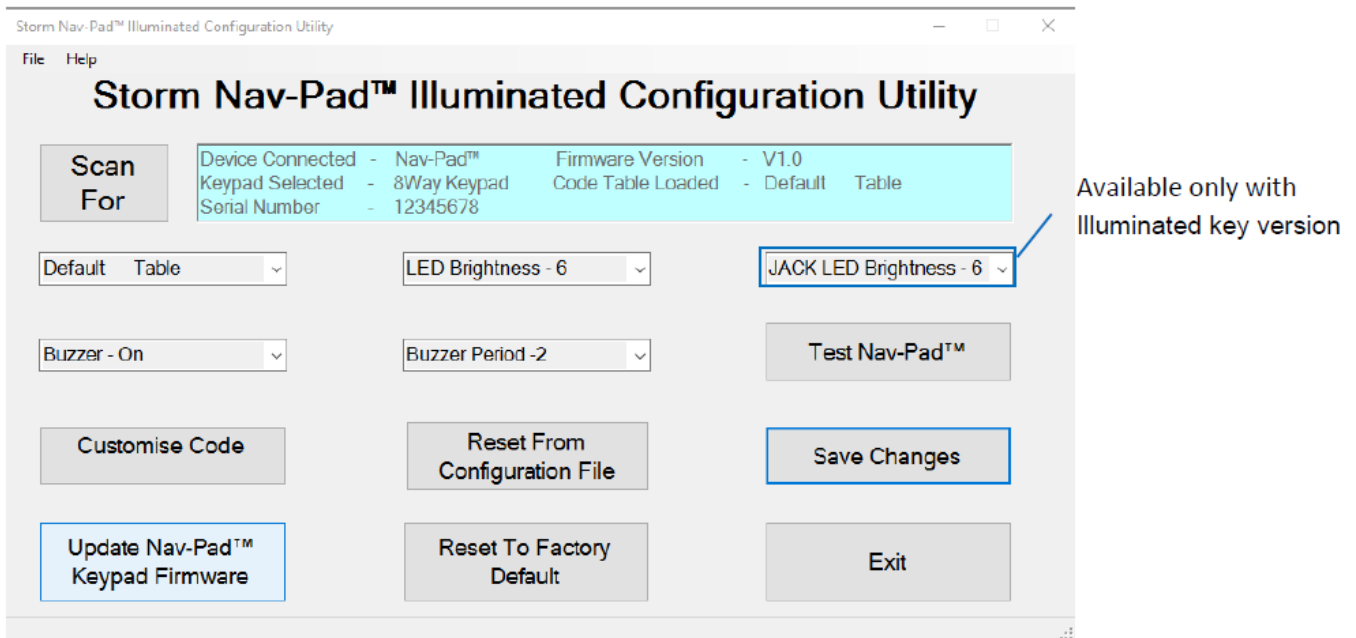
Click on close when complete.
A shortcut will be installed on the Desktop



Using the Utility

Double Click on the Shortcut to start and it will display the form below. Connect the NavPad to a USB port.

Note: Before loading the form it initially detects the NavPad™+ audio using the VID/PID and if found it sends a device status message. If all successful, then all the buttons are enabled. If not, then they will all be disabled except for "Scan" and "Exit"



The utility allows you to:

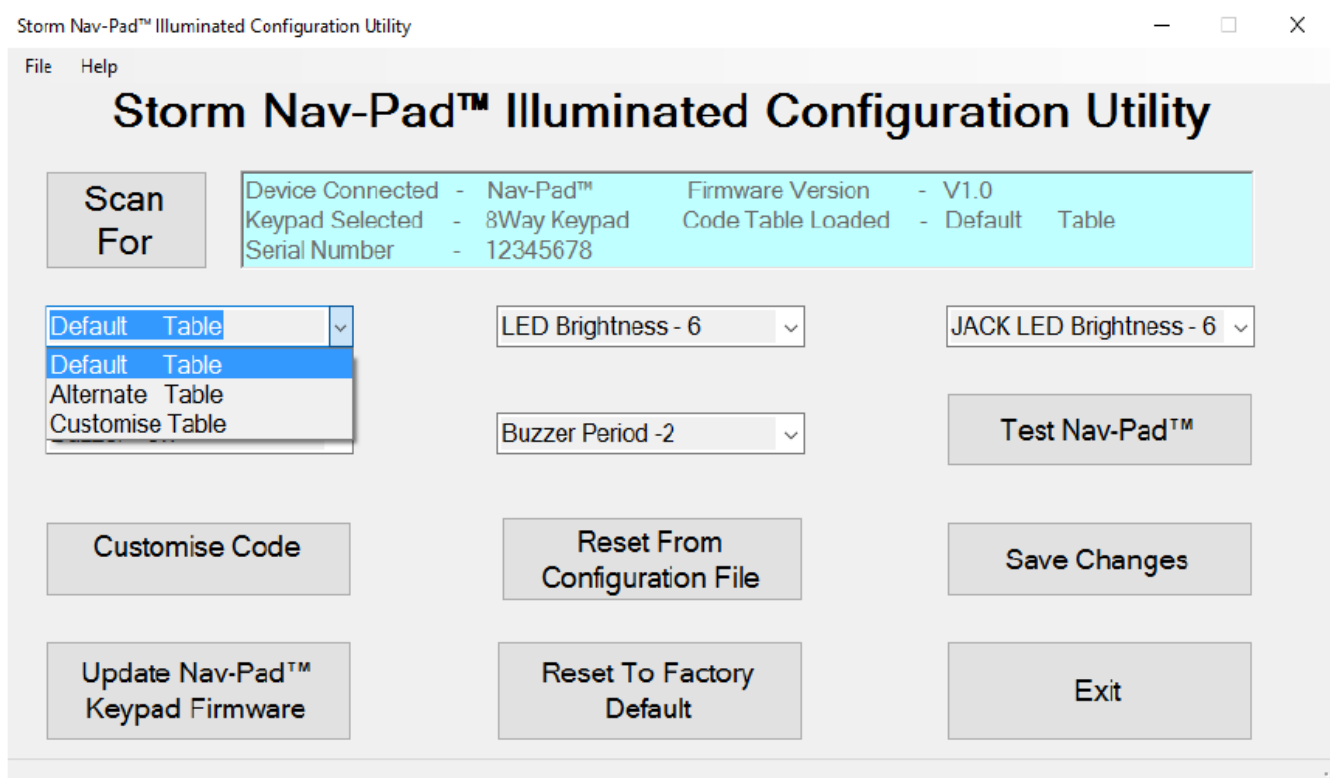
- View the installed firmware version and code table in use.
- Select a Code Table, or create a Customised Table
- Change buzzer behaviour / duration
- Change Audio Jack Socket/ Keys LED brightness
- Load a saved configuration (useful if you need the same configuration on a number of keypads)
- Update the firmware
- Reset to factory defaults
- Test the keypad.

Selecting a Code Table

You can select from three tables:

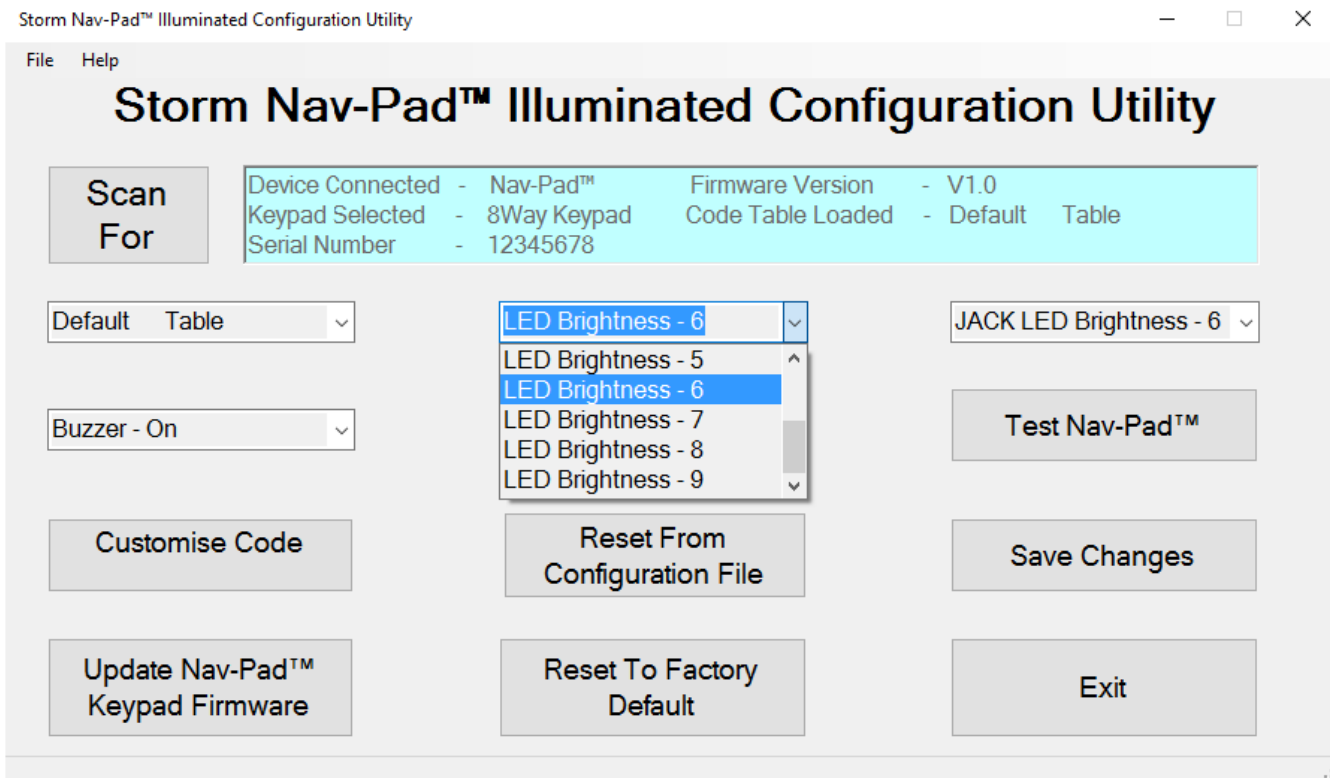
- NavPad™ – Default Table
- NavPad™ – Alternate Table
- NavPad™ – Customise Table (select the codes you prefer using the Utility)

Once a table has been selected then the keypad will retain that configuration whilst it is powered up. Once the keypad has been disconnected that configuration will be lost (unless you Save Changes) To save the configuration in flash memory in the keypad click on “Save Changes”

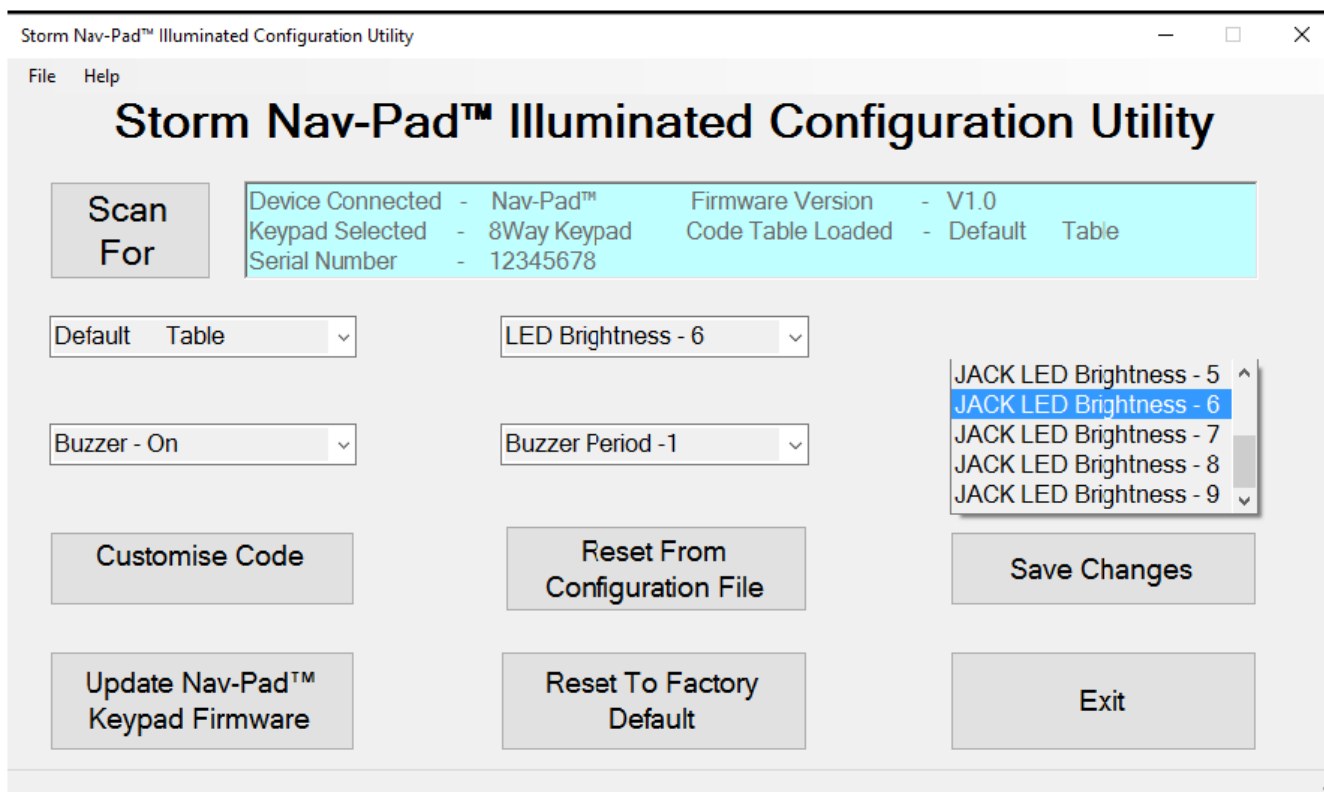


NOTE: If the NavPad™ – Alternate table is selected the function of the UP/DOWN key changes to be the HID consumer-controlled VOLUME UP/VOLUME DOWN. If an audio file is being played and the user presses the UP/DOWN key, the volume on the PC will be adjusted. The volume ICON will be shown on PC.

Changing Key LED Brightness

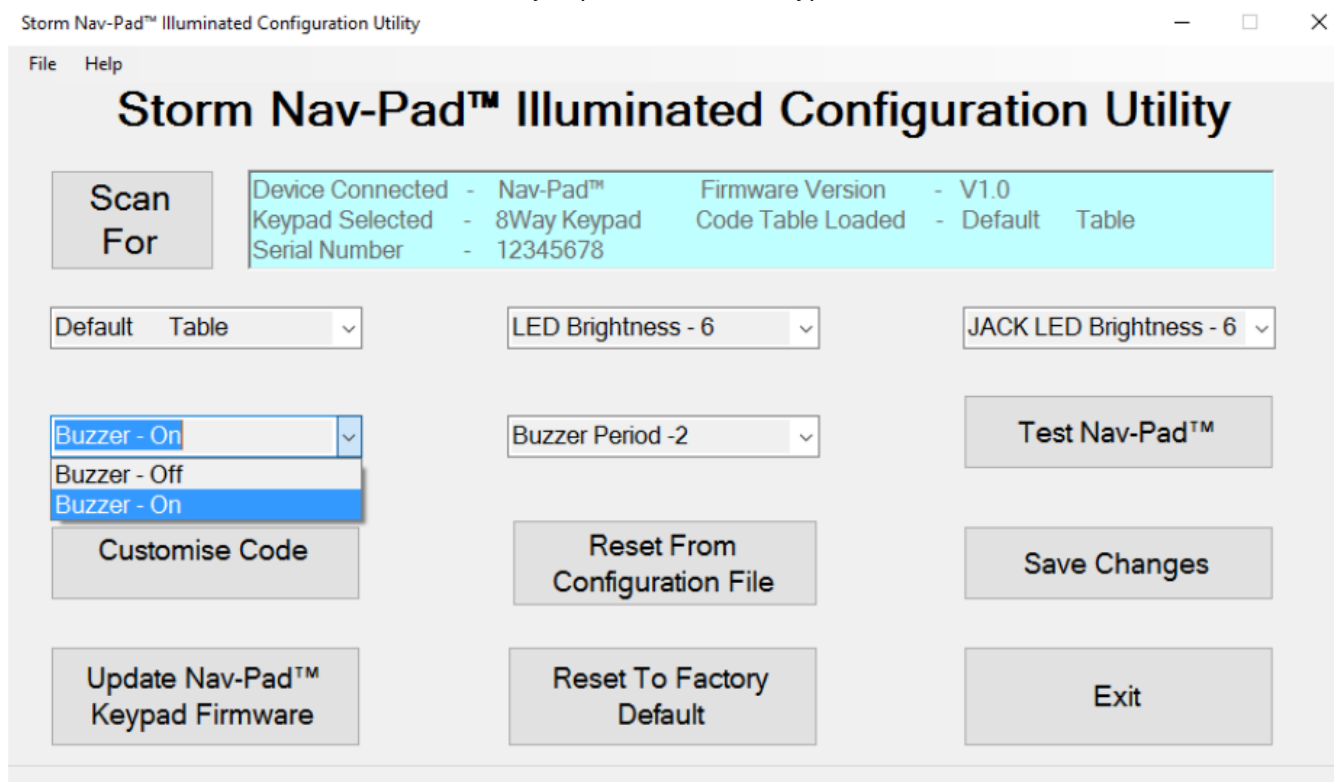


Changing Audio Jack LED Brightness



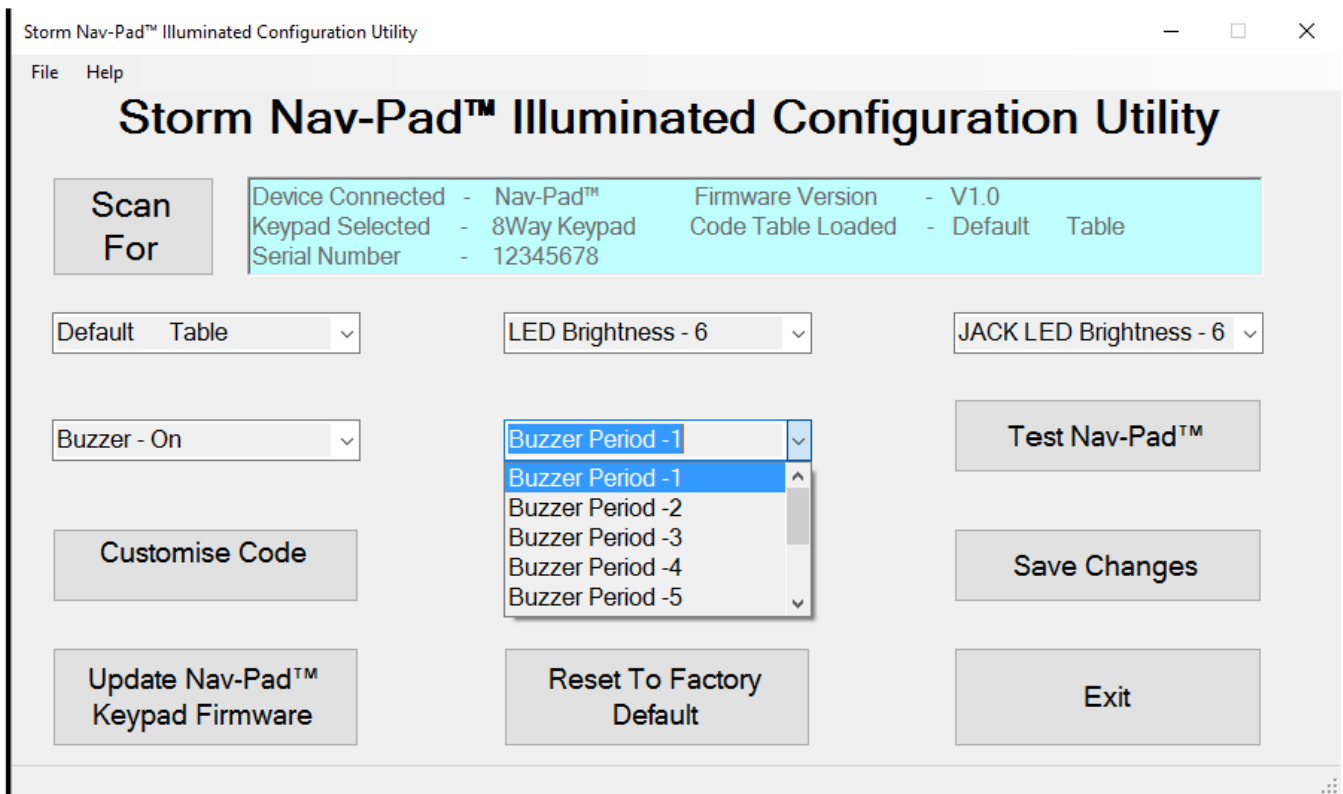
Buzzer On/Off

This controls if the buzzer sounds when a key is pressed on the keypad. The duration is $\frac{1}{4}$ sec.



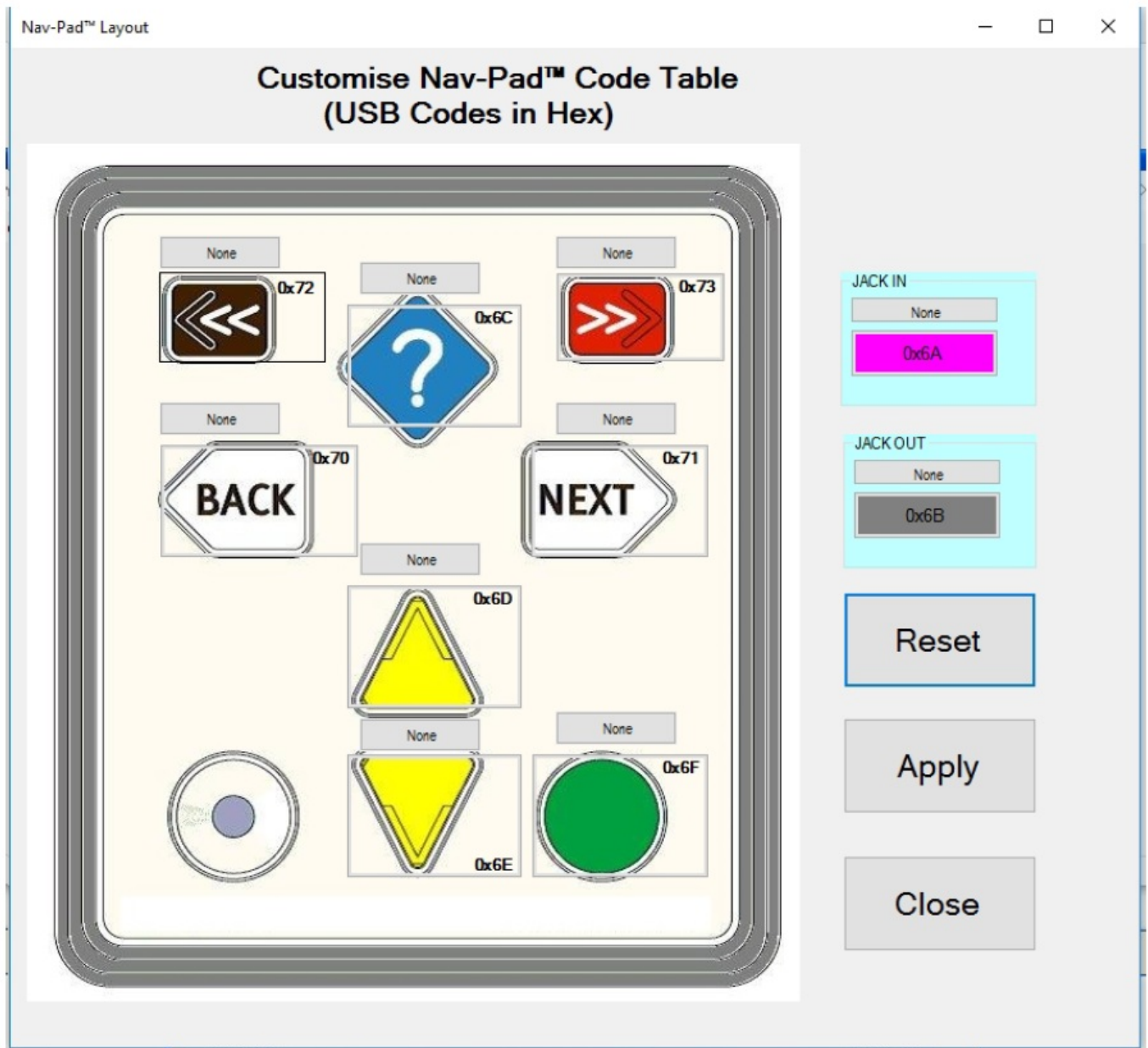
Changing Buzzer Duration

The buzzer duration can be selected from 0 to 9. Each step has an increase of $\frac{1}{4}$ sec, so 9 will sound the buzzer for $2\frac{3}{4}$ seconds.



Customising the Key Code Table

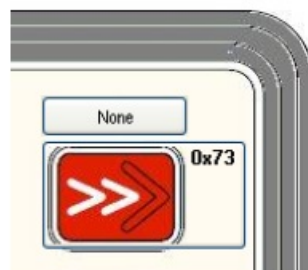
Select "Customise Table" and the following is displayed showing the current USB Code (in hex) for each key on the product.



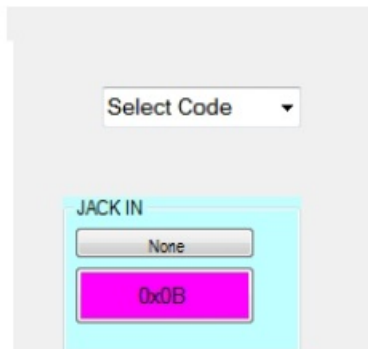
Above each key is a button to show the modifier

Customising the Key Code Table

Click on a key to customise it.



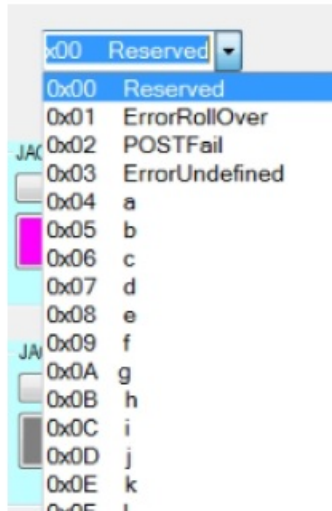
And the "Select Code" combo box will appear.



Select the code you require from dropdown list

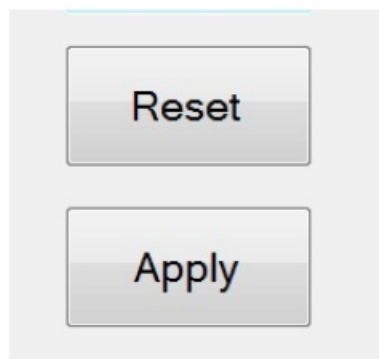
Once a code is selected, the button's background colour will display the new code selected.

Note that 0x74 through 0x81 are extendable codes



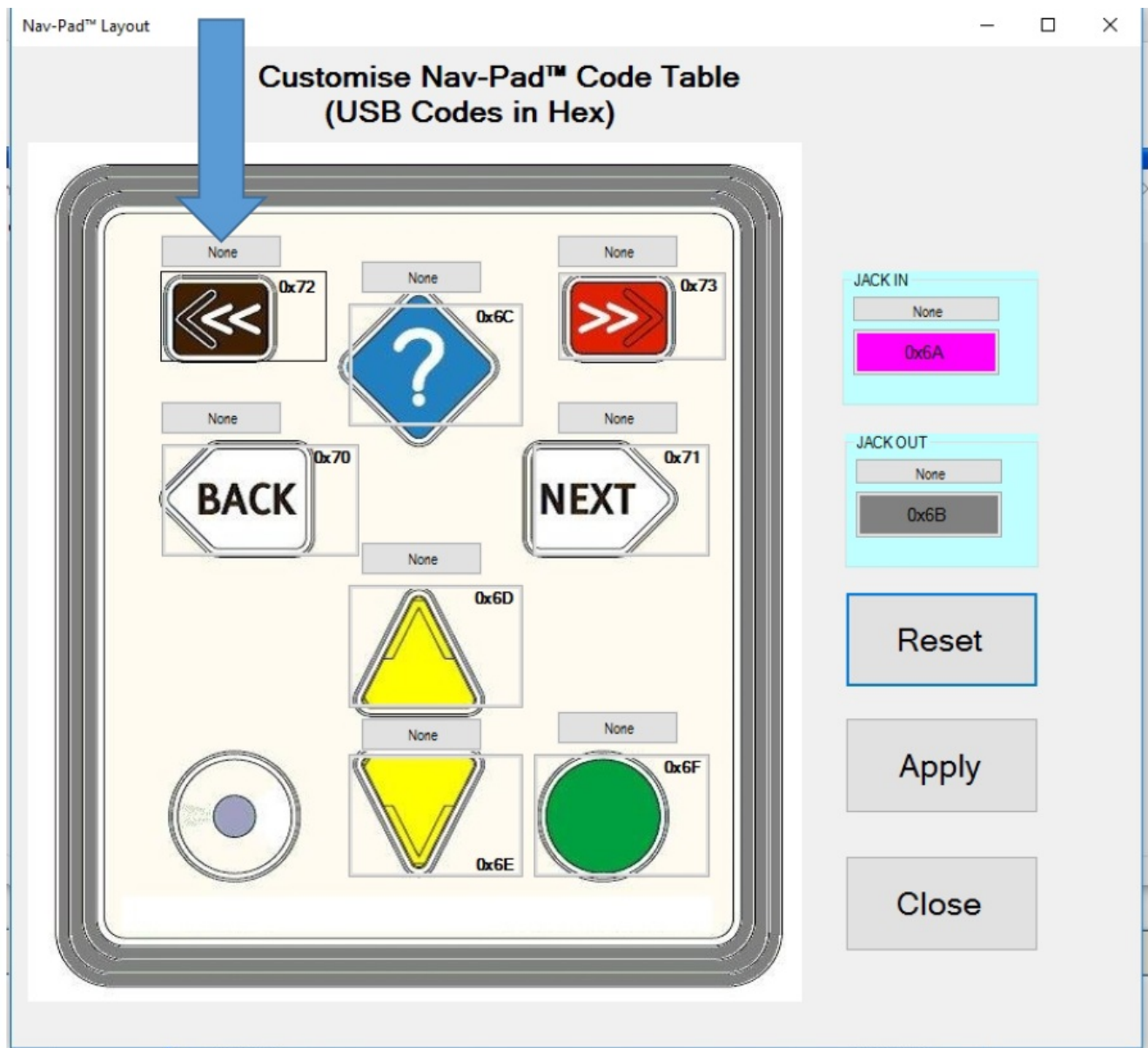
Also note that codes 0x80 Vol Up and 0x81 Vol Down will be transmitted as Windows Multimedia codes.

Press Apply to send the new code to the keypad



Customising the Key Code Table – adding a modifier

Now if you wanted a “D” (uppercase) then you need to add a SHIFT modifier for that key. Click on the modifier button for that key.



The background colour for modifier button will change to orange and a modifier combo box will appear. The following selection is available

- Once you have made a selection:-
- Click on “Apply”, this will save your changes and return you back to the main screen
- Click on “Reset” removes all the customised codes.
- Click on “Close” will exit the customize form without saving changes and returns you back to main screen

NONE

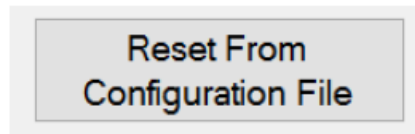
- L SHT – Left Shift
- L ALT – Left Alt
- L CTL – Left Ctrl
- L GUI – Left Gui
- R SHT – Right Shift
- R ALT – Right Alt
- R CTL – Right Ctrl
- R GUI – Right Gui

Customising the Key Code Table

- Do not forget to SAVE YOUR CHANGES
- All configurations, including the customized table are modified in volatile memory.
- So if after modifying the code table the user just disconnects the keypad, then next time the encoder is powered on, it will revert back to previous configuration data.
- To save the modified data in nonvolatile memory, click on “Save changes” button before you power down the keypad.

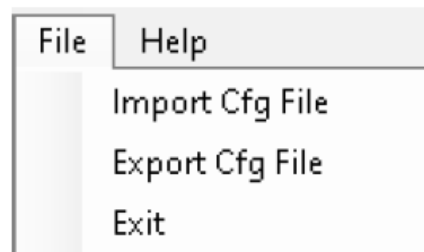
Loading a saved Configuration

If you disconnect the NavPad and connect another NavPad, then press Reset from Configuration File



This will load the locally stored configuration that you have just created onto the connected NavPad Alternatively you can use the utility to save your configuration file to a network location.

- From the File menu click on Export Cfg File, and choose a location to save the current configuration



- To load a saved configuration : connect the NavPad
- Click on Import Cfg File to browse for the file
- When you select the config file it will load onto the NavPad

Reset to factory defaults

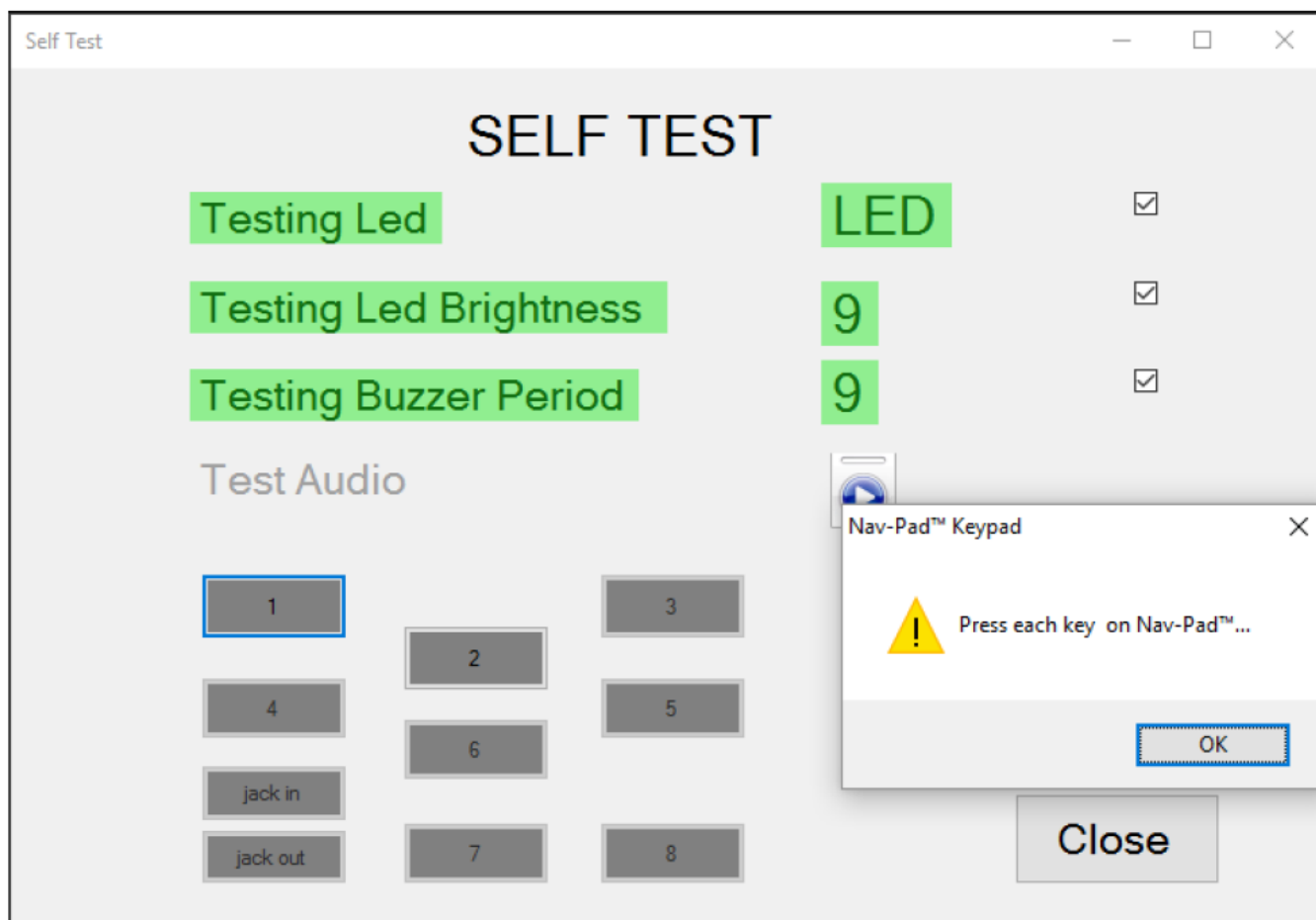
- Clicking on “Factory Default” will set the NavPad™ + audio keypad with values that are preset.
- NAVPAD™ – default table
- LED brightness – 9
- Beeper – on
- Beeper Period – 1

This will test all the functionality of NAVPAD™ + audio keypad. The utility will detect which keypad type is connected.

- Sequence the illumination over all dimming levels
- Beep the beeper (SHORT AND LONG BEEPS)
- Key test
- Jack in/out
- Audio test

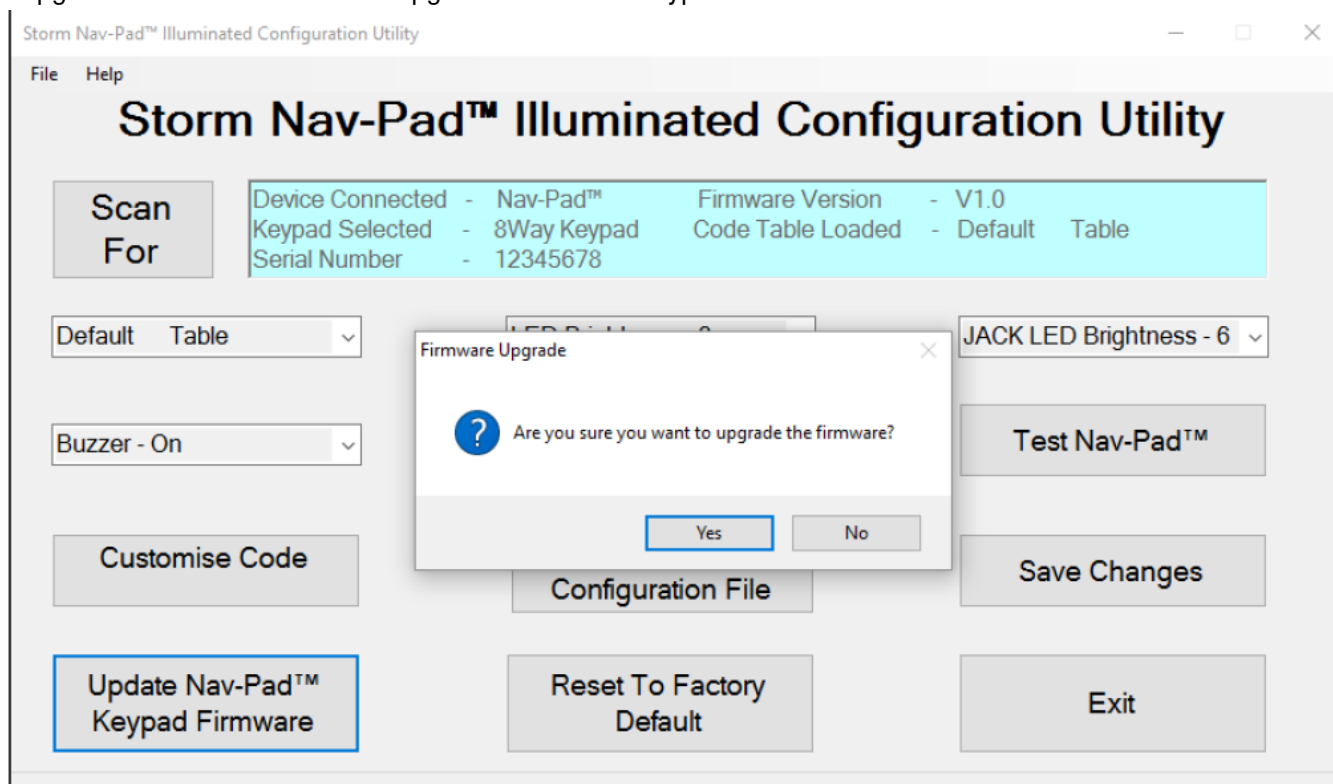
To test the audio of the NavPad™ you must be using the default code table.

Click On “Test NavPad™” to start

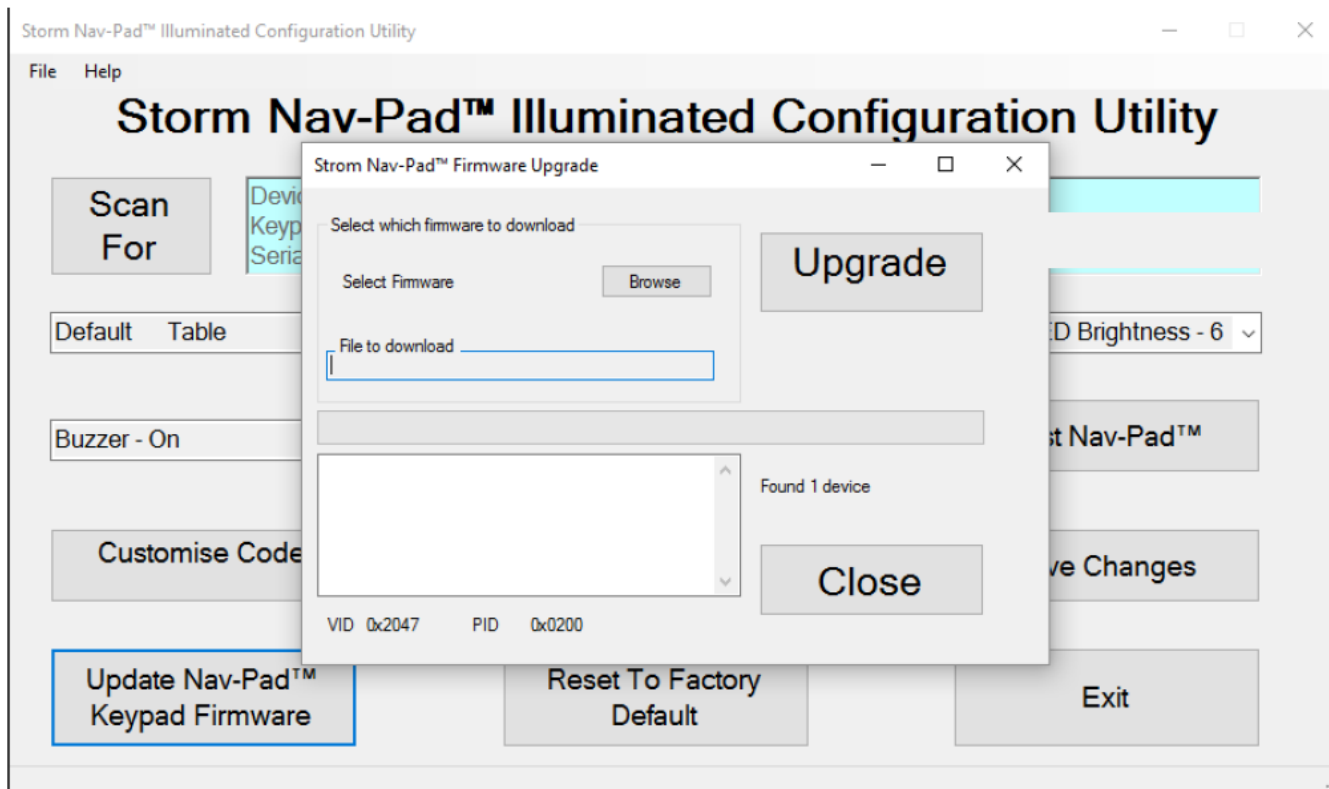


Upgrade Firmware

To upgrade the firmware click on “Upgrade NavPad™ Keypad Firmware” button



Click on “Yes” to confirm

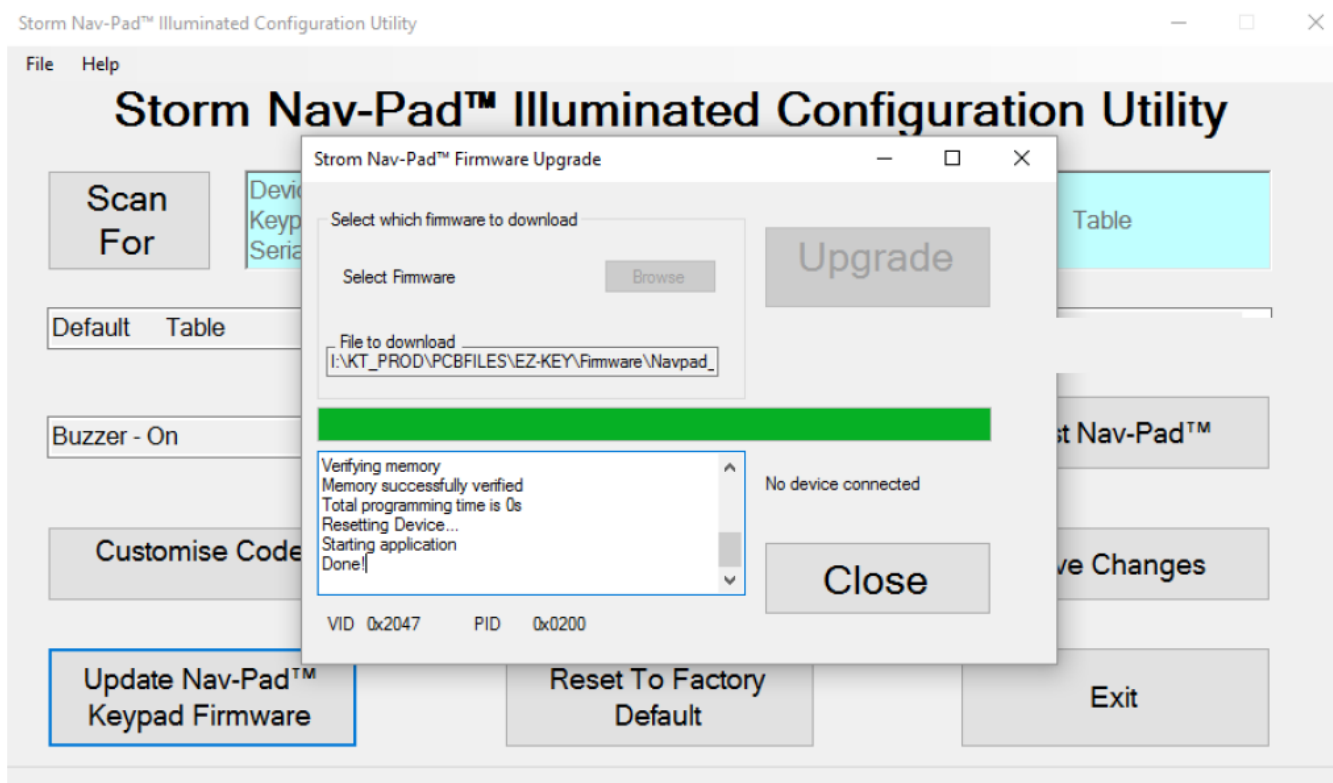


After a few seconds the “Browse” and “Upgrade” button will be enabled. (If both buttons are greyed out then reset the unit and retry)

Click on “Browse” button and navigate to the firmware file. Then click on “Upgrade” to start the upgrade process
Do not disconnect the cable while upgrade is in progress.

Upgrade Firmware

The screen below will be displayed while the upgrade is in process.



- Once unit has upgraded to new firmware, the NavPad™ will auto reboot.
- Press “Close” and the new firmware version will be displayed on the utility.

Change History

Instructions for	<u>Date</u>	<u>Version</u>	<u>Details</u>
Config Utility	15 Aug 24	1.0	First Release (split out from Tech Manual)


Utility – std	<u>Date</u>	<u>Version</u>	<u>Details</u>
	06 May 15	1.0	First Release
	17 Nov 16	2.0	Updated
	09 Feb 17	3.0	Superscript Characters removed from filenames so that utility installs correctly on Windows 7
	16 Feb 17	4.0	Added fix for install to Win 7 POS Ready O/S
	08 Sep 17	6.0	Added Win 10 Compatibility
	19 Jan 21	7.0	Update to loading saved config (to retain SN)
	01 Feb 22	7.1	New user agreement
	04 Jul 22	7.2	Enable feature for loading config file from network

Utility – illuminated

06 Mar 19	1.0	First Release
06 Jan 21	2.0	Add mic test. Update to loading saved config (to retain SN)
01 Feb 22	2.1	New user agreement
04 Jul 22	2.2	Enable feature for loading config file from network

NavPad – Config Utility www.storm-interface.com

Documents / Resources

	<p>Storm Interface EZ08-22301 NavPad Config Utility [pdf] Instruction Manual</p> <p>EZ08-22301, EZ08-22200, EZ06-23001, EZ08-23001, EZ08-23200, EZ06-43001, EZ08-43001, EZ08-43200, EZ08-22301 NavPad Config Utility, EZ08-22301, NavPad Config Utility, Config Utility, Utility</p>
---	---

References

- [User Manual](#)

Manuals+. Privacy Policy

This website is an independent publication and is neither affiliated with nor endorsed by any of the trademark owners. The "Bluetooth®" word mark and logos are registered trademarks owned by Bluetooth SIG, Inc. The "Wi-Fi®" word mark and logos are registered trademarks owned by the Wi-Fi Alliance. Any use of these marks on this website does not imply any affiliation with or endorsement.