



AudioNav-EF Extended
Functionality And Audible System



Storm Interface AudioNav-EF Extended Functionality And Audible System Installation Guide

[Home](#) » [Storm Interface](#) » Storm Interface AudioNav-EF Extended Functionality And Audible System Installation Guide 

Contents

- [1 Storm Interface AudioNav-EF Extended Functionality And Audible System](#)
- [2 Product Information](#)
- [3 FAQ](#)
- [4 INTRODUCTION](#)
- [5 System Requirements](#)
- [6 Installing the Configuration Utility](#)
- [7 Select a Code Table](#)
- [8 Create a Custom Code Table](#)
- [9 Choosing a USB Code](#)
- [10 Adding a modifier](#)
- [11 LED Brightness](#)
- [12 Test the AudioNav](#)
- [13 Touchless Settings](#)
- [14 Update the Firmware](#)
- [15 Reset the AudioNav to Factory Defaults](#)
- [16 Reset the AudioNav from a saved Configuration](#)
- [17 Change History](#)
- [18 Documents / Resources](#)
 - [18.1 References](#)
- [19 Related Posts](#)





Product Information

Specifications

- **Product Name:** AudioNav Config Utility
- **System Requirements:** .NET framework installed on PC
- **Compatibility:** Windows 11, Windows 10

Installation

1. Download the Configuration Utility from www.storm-interface.com/downloads.
2. Double click on the downloaded .exe file to launch the Setup Wizard.
3. Click on "Next" throughout the installation process.
4. Choose installation options (e.g., for just you or everyone).
5. Confirm installation and ensure at least 10MB of space is available.
6. A shortcut will be installed on the Desktop for easy access.
7. Close the installation wizard upon successful installation.

Using the Utility

1. Double-click the shortcut on the Desktop to start the Utility.
2. If an AudioNav device is connected, it will be automatically detected.
3. Functions available include:
 - Select a Code table
 - Create a customized code table
 - Change the LED brightness
 - Test the AudioNav
 - Update the Firmware
 - Reset the AudioNav to factory defaults

- Configure Bluetooth Touchless settings
- Reset the AudioNav from a saved configuration

FAQ

- **What are some common troubleshooting steps if the Utility does not detect the AudioNav device?**

Make sure the USB connection is secure, restart the Utility, and check if the device is powered on.

- **Can I customize the LED brightness to a specific level?**

Yes, you can adjust the LED brightness from 0 to 9 using the Utility.

- **How do I reset the AudioNav to factory default settings?**

Within the Utility, there is an option to reset the AudioNav to its factory default settings.

INTRODUCTION

- The content of this communication and / or document, including but not limited to images, specifications, designs, concepts, data and information in any format or medium is confidential and is not to be used for any purpose or disclosed to any third party without the express and written consent of Keymat Technology Ltd. Copyright Keymat Technology Ltd. 2022 .
- Storm, Storm Interface, Storm AXS, Storm ATP, Storm IXP , Storm Touchless-CX, AudioNav, AudioNav-EF and NavBar are trademarks of Keymat Technology Ltd. All other trademarks are the property of their respective owners
- Storm Interface is a trading name of Keymat Technology Ltd
- Storm Interface products include technology protected by international patents and design registration. All rights reserved

System Requirements

The utility requires .NET framework to be installed on the PC and will communicate over the same USB connection but via the HID-HID data pipe channel, no special drivers are required.

Compatibility

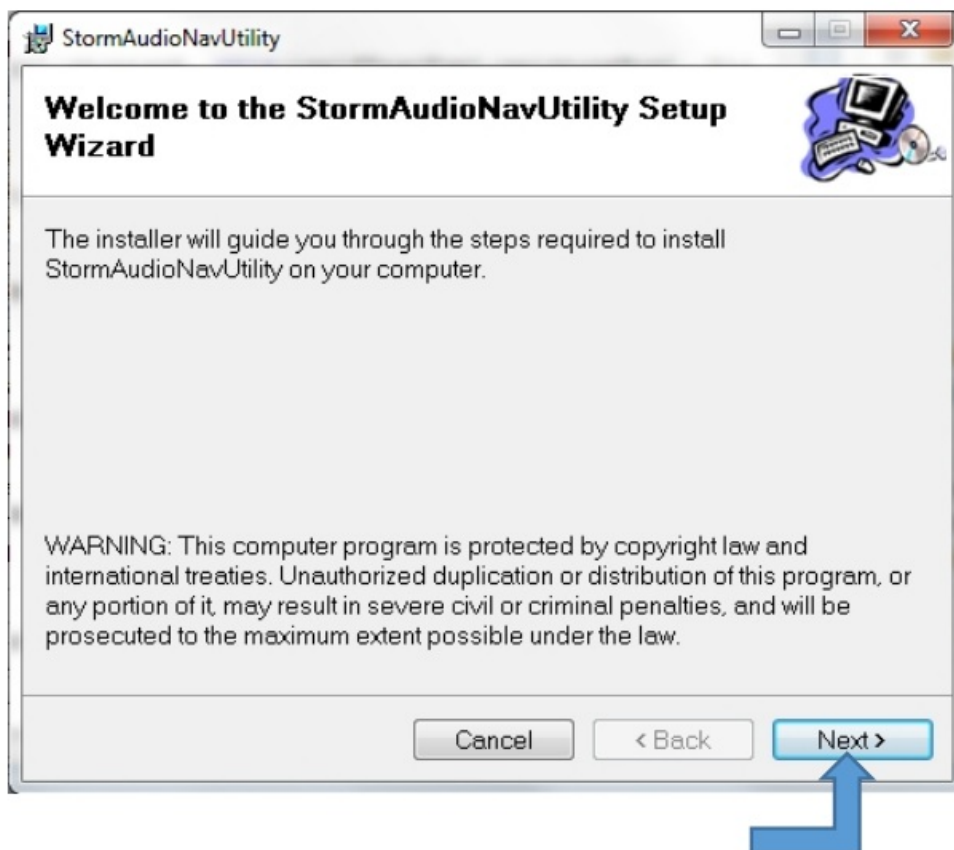
- Windows 11
- Windows 10

The utility can be used to configure the product to

- Select Code Table
- LED brightness (0 to 9)
- Test AudioNav
- Create customised keypad table
- Configure Bluetooth settings
- Reset to factory default
- Load Firmware

Installing the Configuration Utility

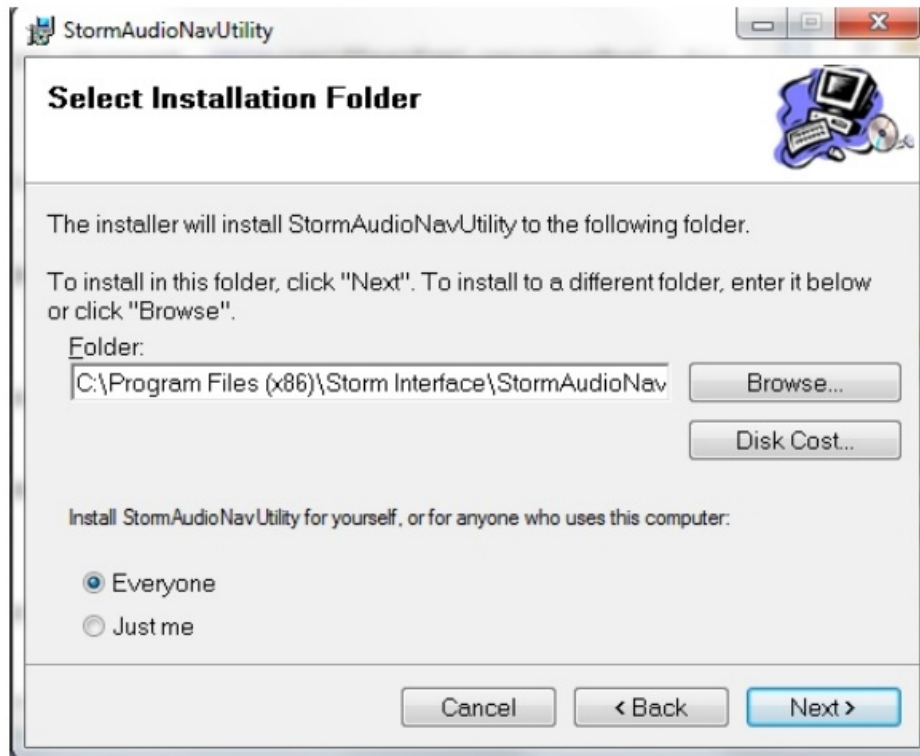
- To install the Configuration Utility download from www.storm-interface.com/downloads, double click on the downloaded .exe file and the Setup Wizard will launch
- Click on "Next"



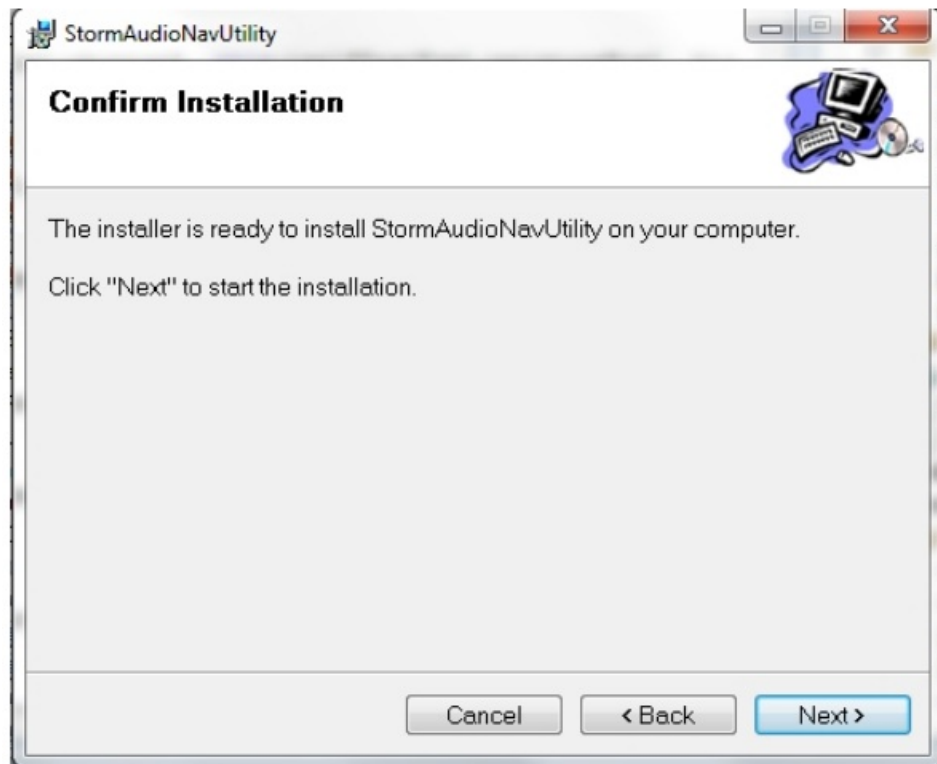
- Select "I Agree" and Click on "Next"



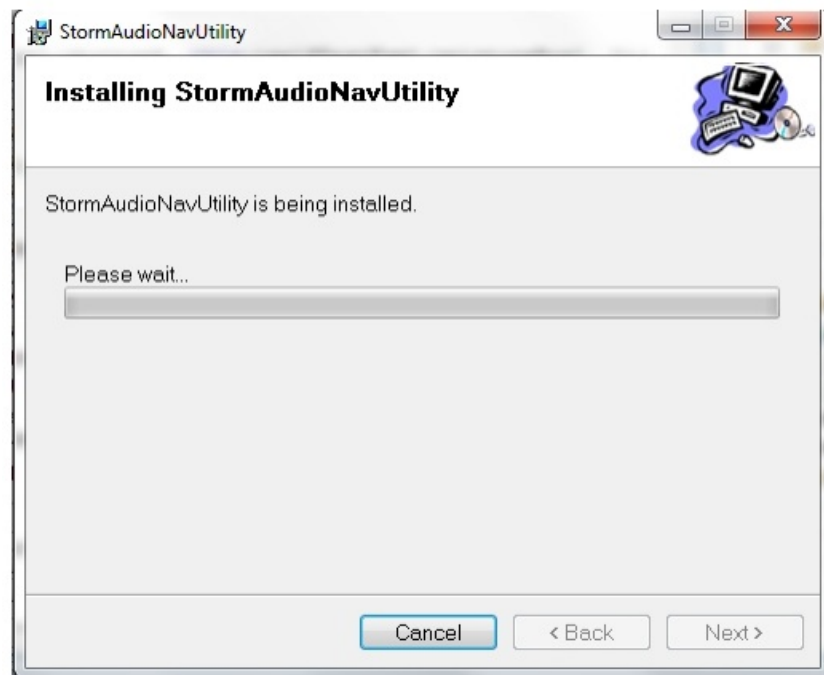
- Select if you would like to install for just you or everyone and select location if you do not want to install at default location. Then click on “Next”



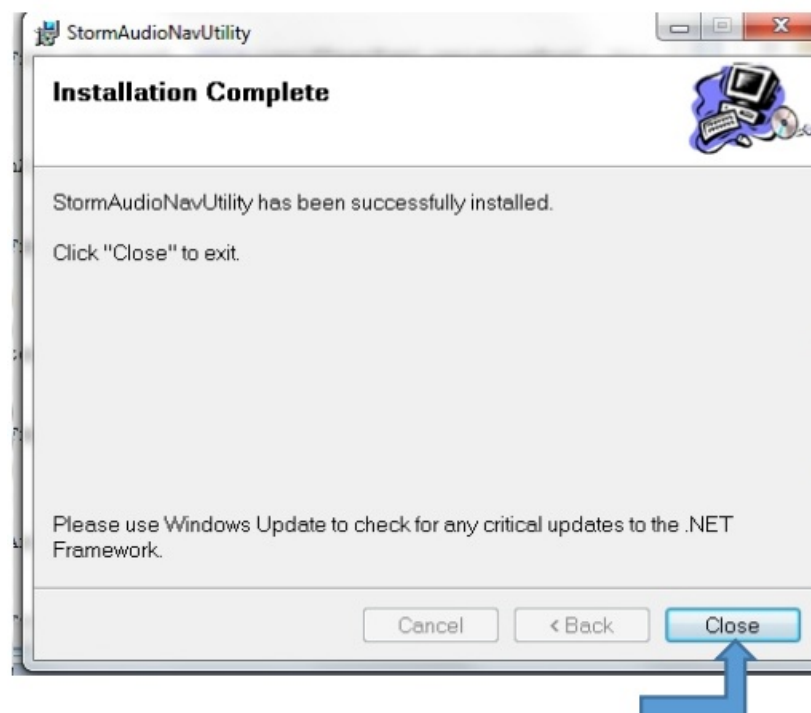
- Click on “Next” to confirm.



- The “Disk Cost” shows available space at your chosen folder. The program requires 10MB of space.



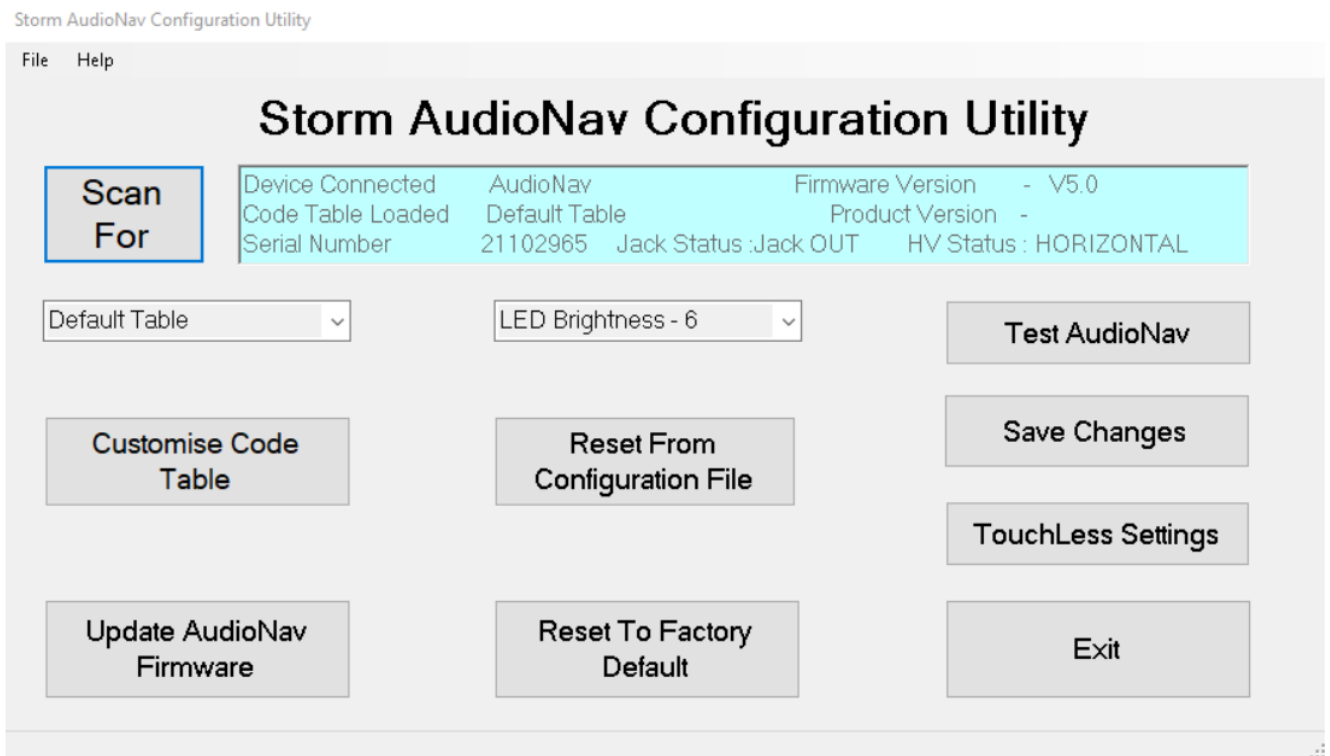
- Click on “Close” for successful installation.



- A shortcut will be installed on Desktop.



- Double-click this to start the Utility..
- If an AudioNav device is connected it will be detected automatically and the details displayed in the blue panel at the top



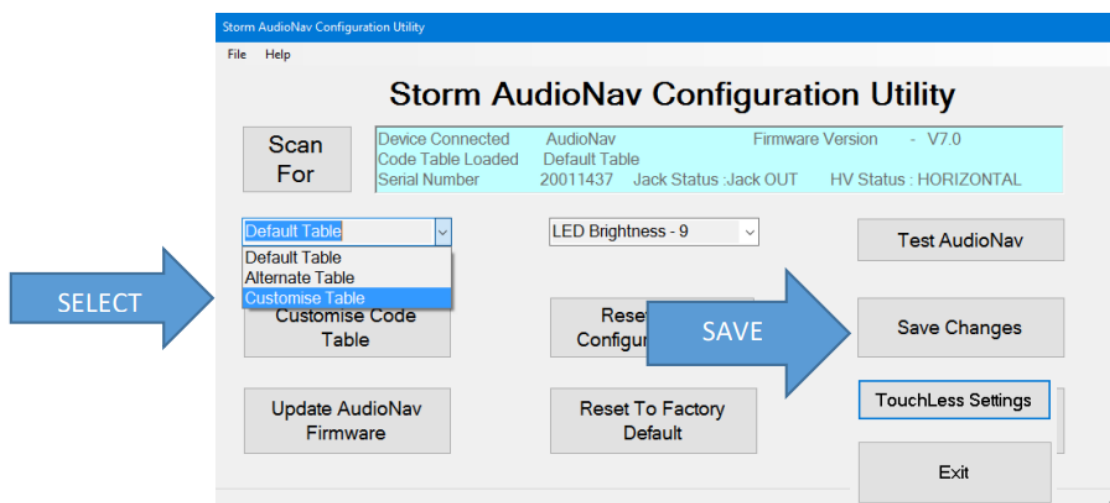
- The following functions are available and will be described on the following pages :-
 - Select a Code table
 - Create a customised code table
 - Change the LED brightness
 - Test the AudioNav
 - Update the Firmware
 - Reset the AudioNav to factory defaults Configure Bluetooth Touchless settings Reset the AudioNav from a saved configuration

Select a Code Table

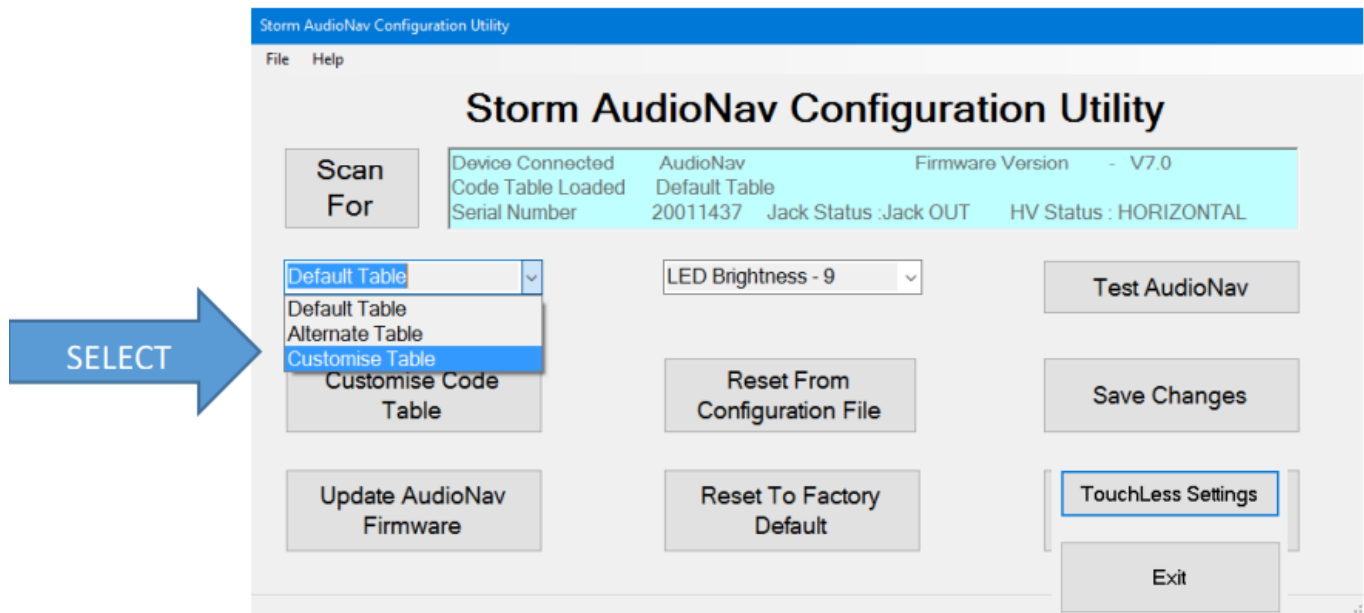
- The user can select from three tables:

FACTORY DEFAULT OUTPUT CODE TABLE			ALTERNATE CODE TABLE		CUSTOMISED CODE TABLE
Function	Hex	USB Description	Hex	Description	
Right	0x4F	Right Arrow	0x4F	Right Arrow	Set initially to the factory default values
Left	0x50	Left Arrow	0x50	Left Arrow	
Down	0x51	Down Arrow	<0x01><0x04>	Multimedia Vol Down	
Up	0x52	Up Arrow	<0x01><0x02>	Multimedia Vol Up	
Select	0x28	Enter	0x28	Enter	
Jack IN	0x6A	F15	0x6A	F15	
Jack OUT	0x6B	F16	0x6B	F16	
Volume	0x6C	F17	0x6C	F17	
Orientation Switch					
Landscape	0x6D	F18	0x6D	F18	
Portrait	0x6E	F19	0x6E	F19	

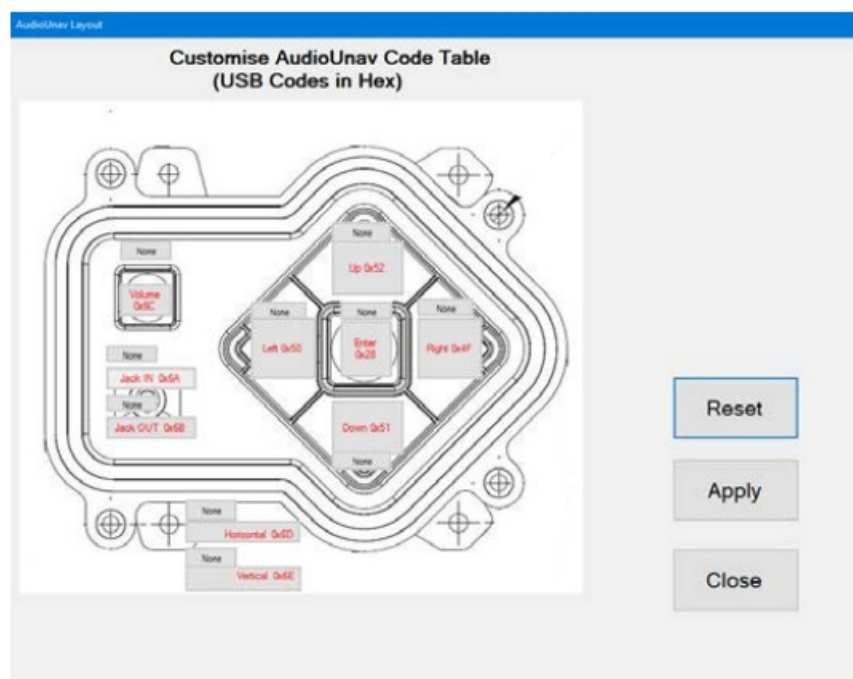
- Once a table has been selected then the keypad will hold that configuration unless it is disconnected.
- Once the keypad has been disconnected that configuration will be lost unless you save the configuration in memory by clicking on “Save Changes”



Create a Custom Code Table

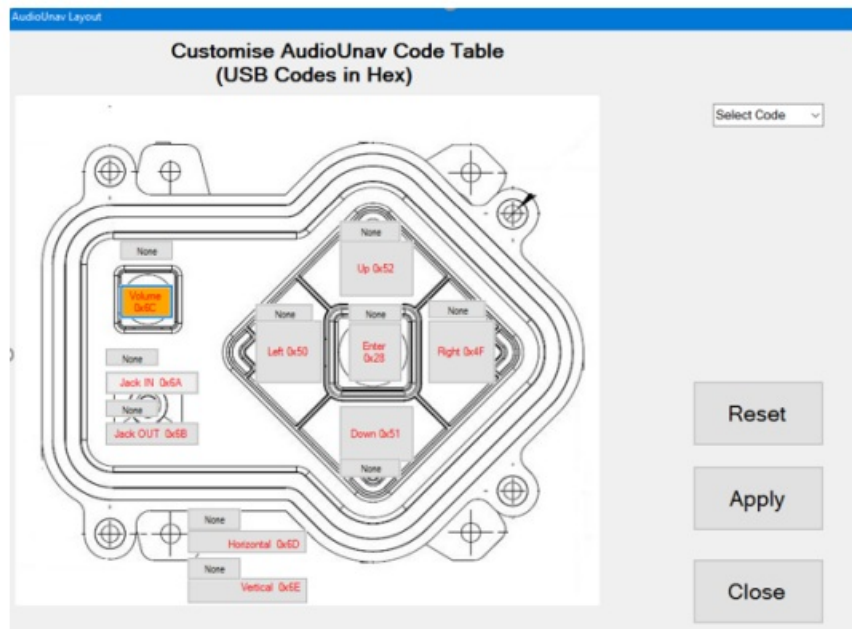


- First select Customise table
- Note that Multimedia Control Codes (Vol Up / Down) are not available in Customised Table. Please note: JACK IN/OUT and Horizontal/Vertical codes can also be customised.
- Click on 'Customise Code table. The following will be displayed

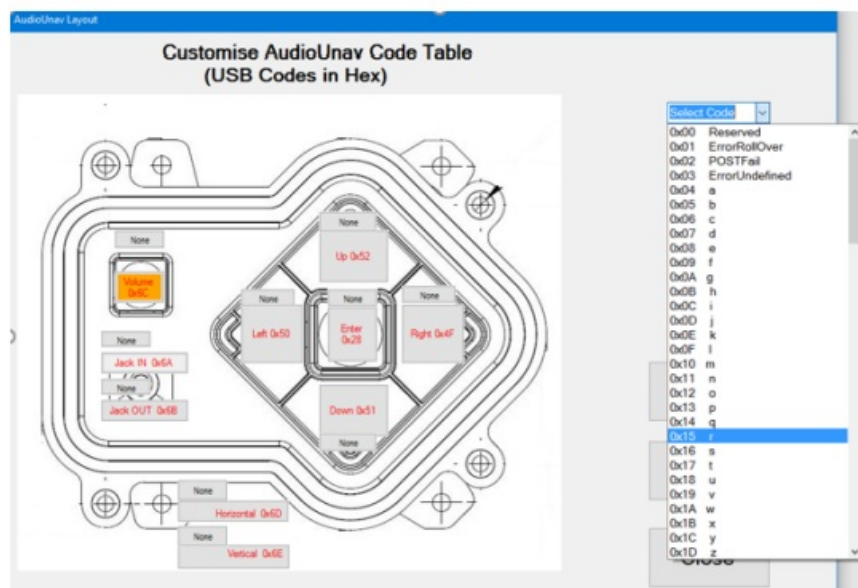


Choosing a USB Code

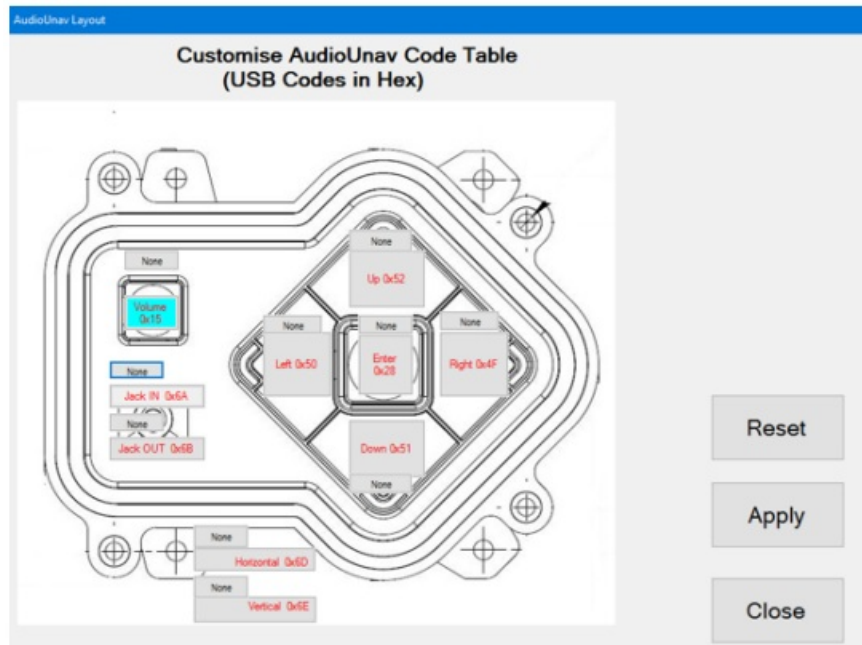
- The current customised code table will be displayed from memory on the keypad. Attached to each key is another button ("NONE"), this shows the modifier for each key.
- To customize a key, click on the key and Key Code combo box will appear, with "Select Code".
- The button colour will change to "Orange"



- Now press on the down arrow on the combo box: This will display all the codes that can be selected.
- These codes are the ones defined by USB.org.
- Once code is selected, the code will be displayed on the selected button.



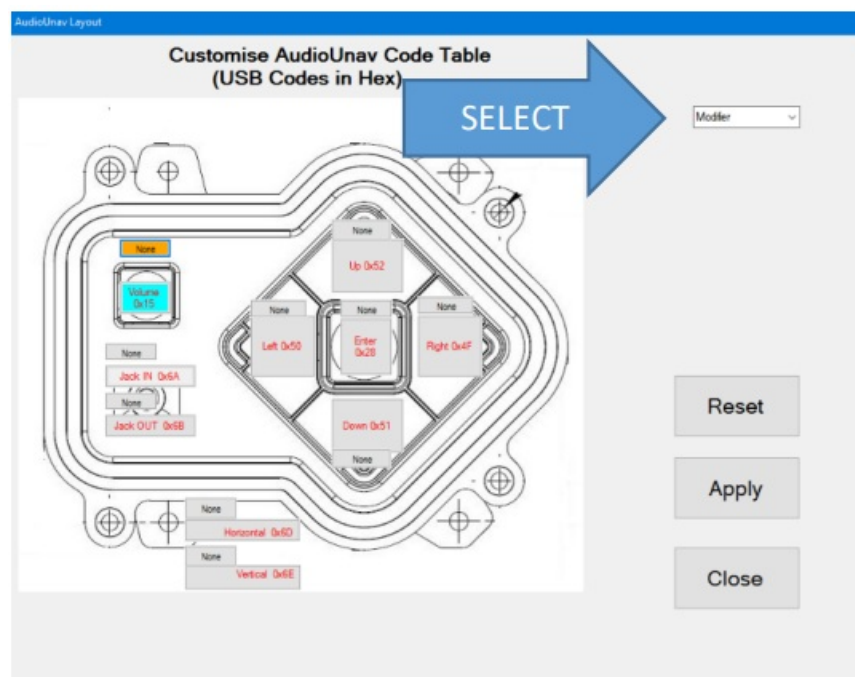
- In this example I have selected “e” and code is represented by 0x08 and button colour will change to Aqua.



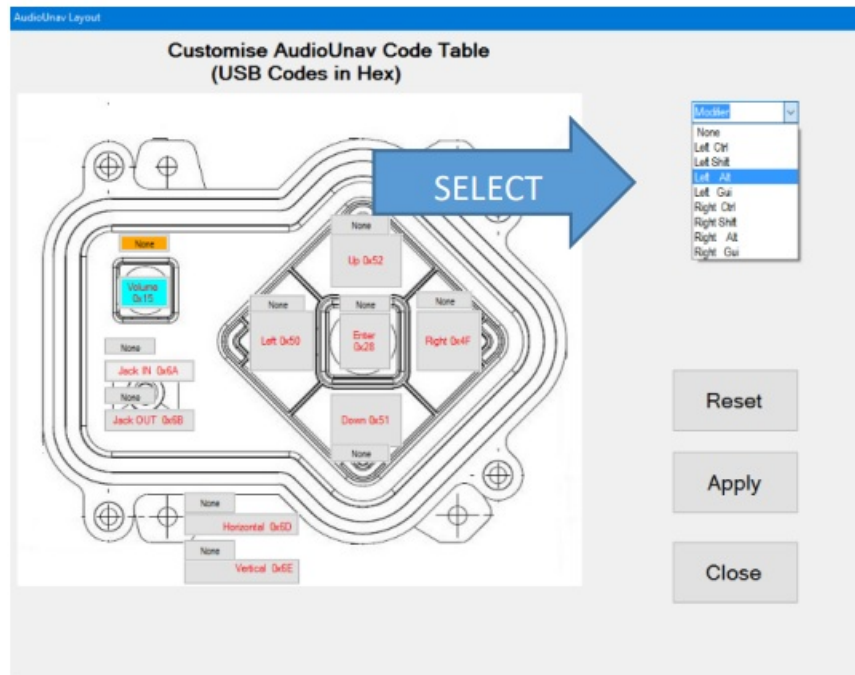
- Press the “Apply” button and the code will be sent to the AudioNav.
- When you press key “Down” on keypad, “e” will be sent to the relevant application.

Adding a modifier

- Now if you wanted a “E” (uppercase) then you need to add a SHIFT modifier for that key.
- Click on the modifier button for that key.



- The background colour for modifier button will change to orange and modifier combo box will appear. Select down arrow key on modifier combo box and the following selection will be available:

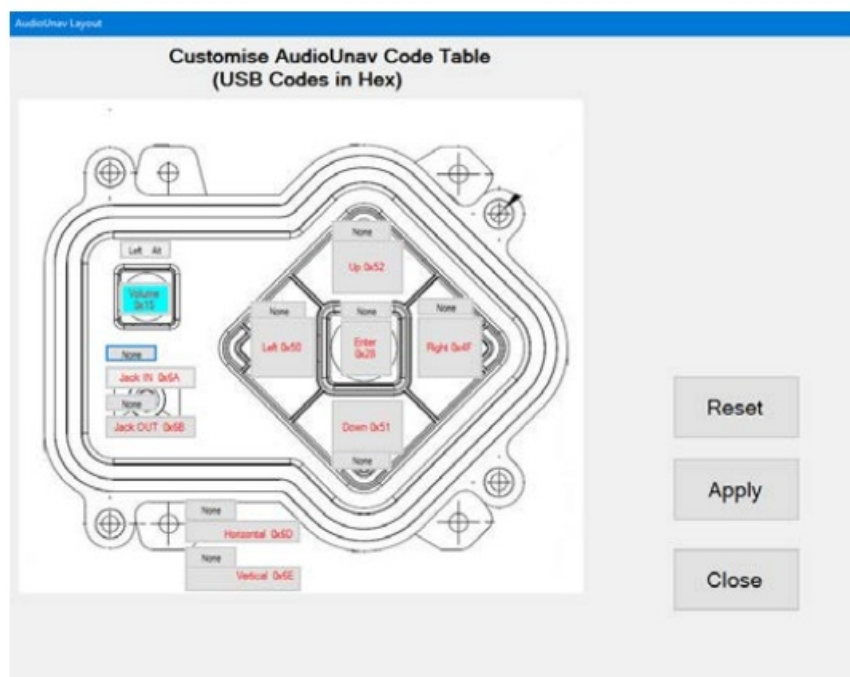


- **NONE**

- **L SHT** – Left Shift
- **L ALT** – Left Alt
- **L CTL** – Left Ctrl
- **L GUI** – Left Gui
- **R SHT** – Right Shift
- **R ALT** – Right Alt
- **R CTL** – Right Ctrl
- **R GUI** – Right Gui

Select either L SHT or R SHT – I have selected R SHT.

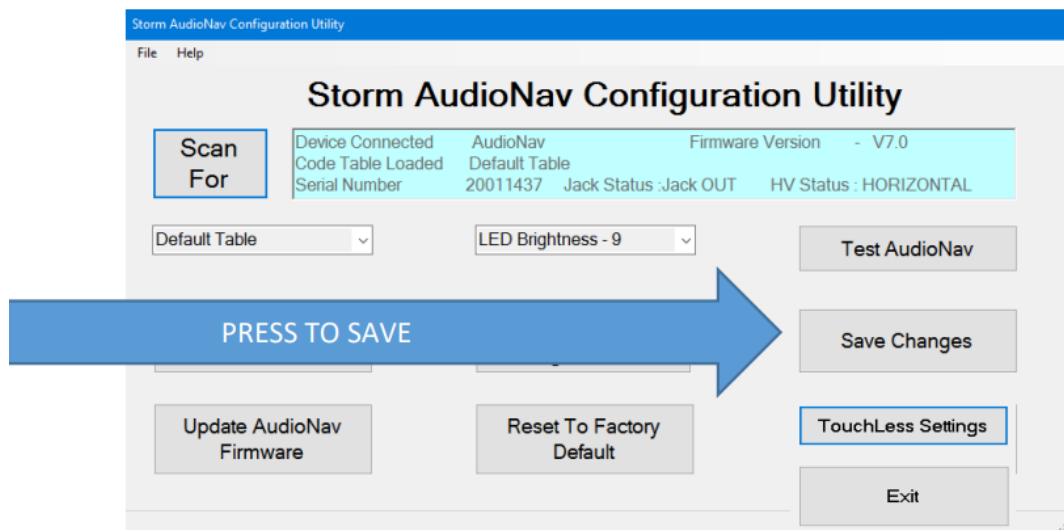
- The R SHT modifier is now displayed on the button and background colour changed to grey. Now if you click on “Apply” and if successfully transferred then pressing “down” on keypad will display “E” (uppercase).



- If you did not want the current setting then click on “Reset” then all buttons will revert to original coding and then

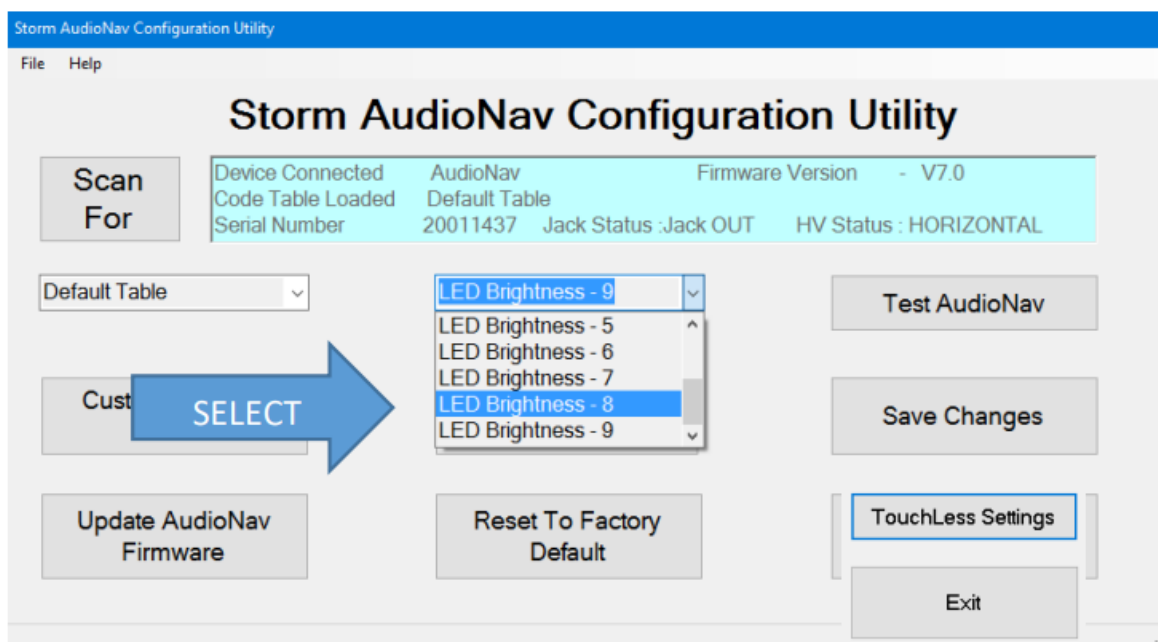
click on “apply” to send this coding to the AudioNav keypad.

- “Close” will exit the customize form and return back to main screen.
- Press “Save Changes”



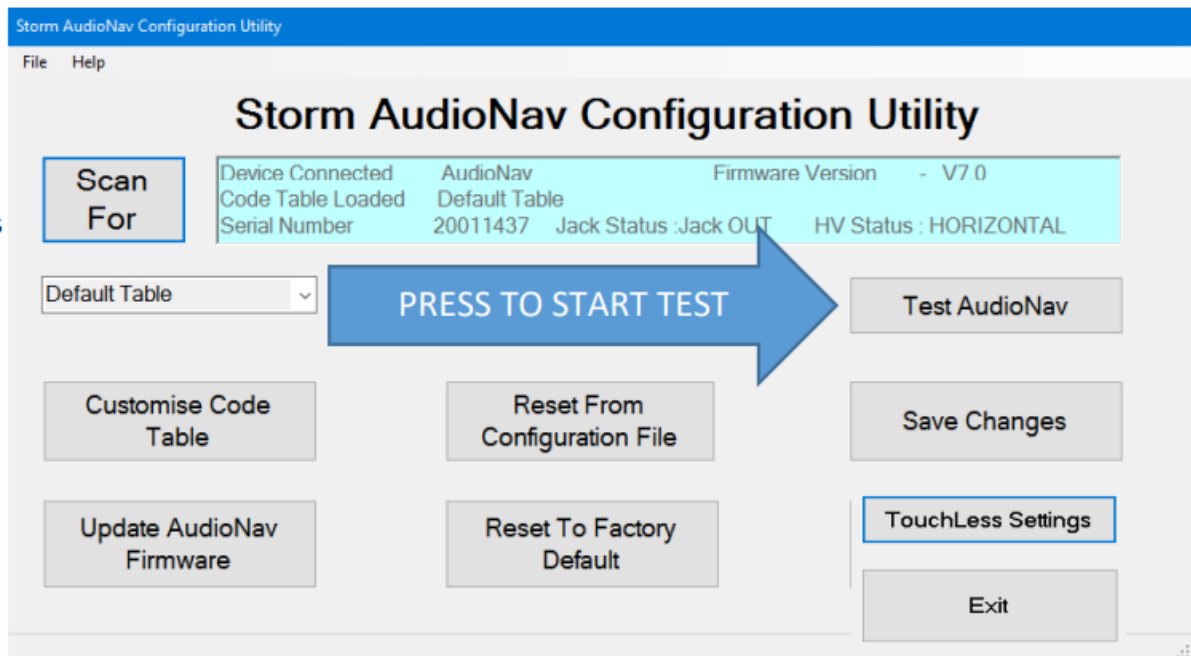
LED Brightness

This will set the brightness of the LEDs. The selection is from 0 to 9.

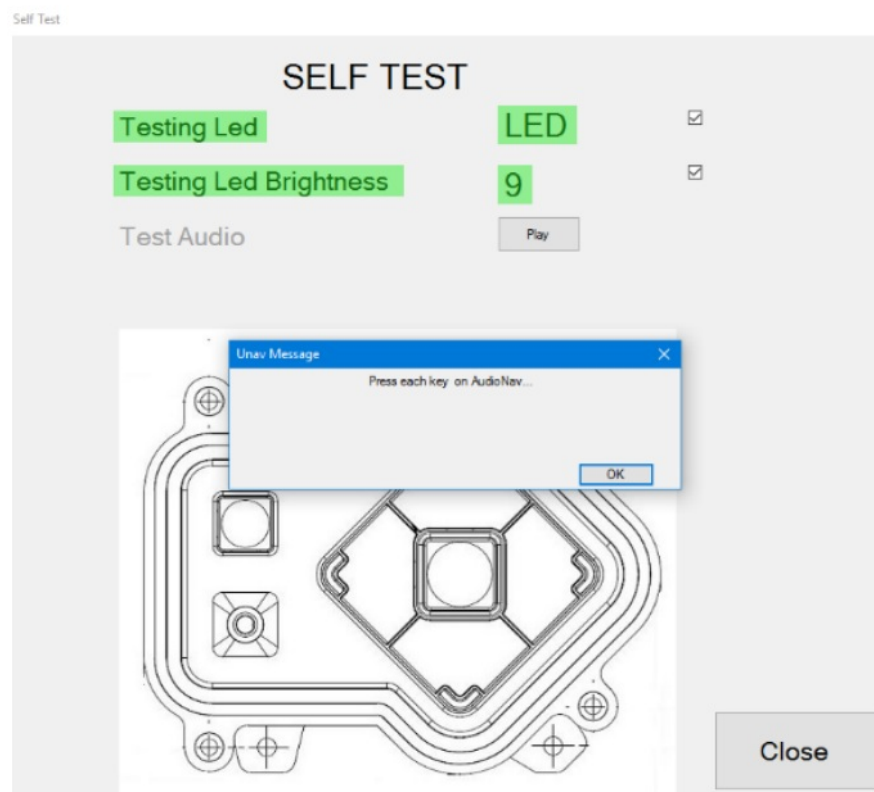


Test the AudioNav

- This will test all the functions :-
 - illumination dimming levels
 - Key test
 - Jack in/out
 - H/V Switch
 - Audio test



- First test the audio (make sure it is set as the default device).
- If the AudioNav supports mic input then you will be prompted to test the mic
- Now press each key on keypad, each key will light up on screen.



- Press close when finished.

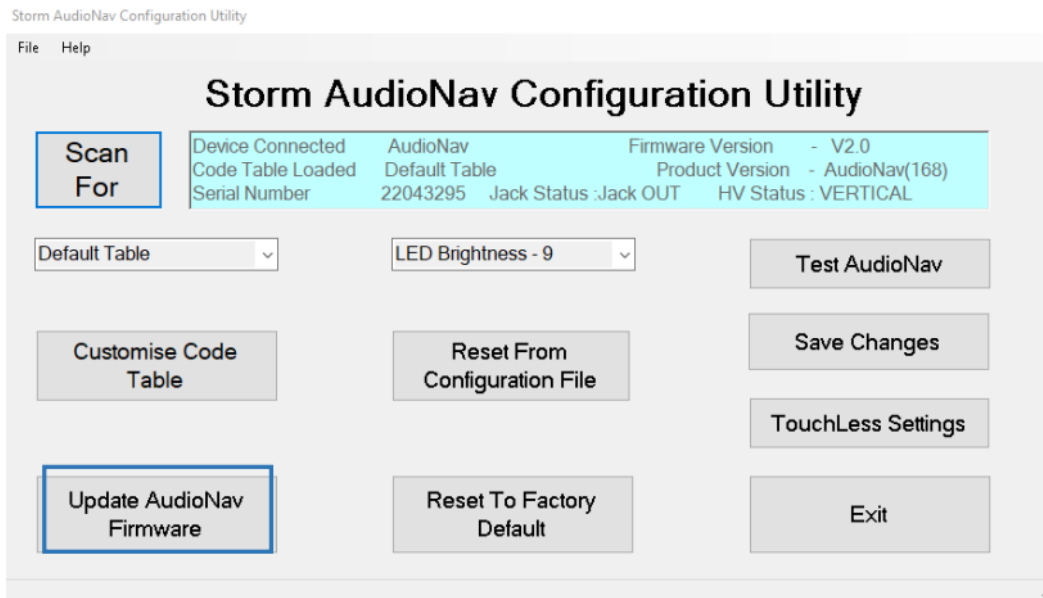
Touchless Settings

- If the AudioNav includes Bluetooth then with the utility you can :-
 - Enable / disable bluetooth functionality
 - Rename the device – this name appears when connecting.
 - Product Type can be set to Landscape / Portrait

- Enable / disable Trackpad in the Touchless-CX app.
- Adjust the Bluetooth operation range
- The Bluetooth range is set by a combination of
 - Transmit power level (from the AudioNav)
 - RSSI level (as seen in the Touchless-CX app)
 - Signal strength drop (as seen in the Touchless-CX app).
- The signal strength is monitored by the Touchless-CX app :-
 - It looks for Storm Bluetooth devices
 - If it detects one and the RSSI level is greater than the level set then it will connect
 - It records the initial signal strength on connection
 - The signal strength will decrease when the user walks away from the kiosk
 - When the signal strength drops by the figure set in RSSI Disconnect margin and remains low for 10 seconds then the app will automatically disconnect.
- The factory default settings give an effective range of 1.5m. They are as follows
 - **RSSI level range (for initial connection) 90 dbm** If you reduce this figure the range will increase
 - **Transmit Power level 2.5 dbm** If you increase this figure the range will increase
 - **RSSI Disconnect Margin 5 dbm** If you increase this figure then you will need to move further away from the kiosk to initiate automatic disconnection
- If Bluetooth has been disabled then you can re-enable it

Enable Bluetooth	Yes
Bluetooth Device Name	STORM 003
Product Type	AudioNav - Lands
Trackpad	Yes
RSSI level range (dbm)	80
Power Level	0dbm
RSSI Disconnect Margin (dbm)	10
	Cancel
	Apply

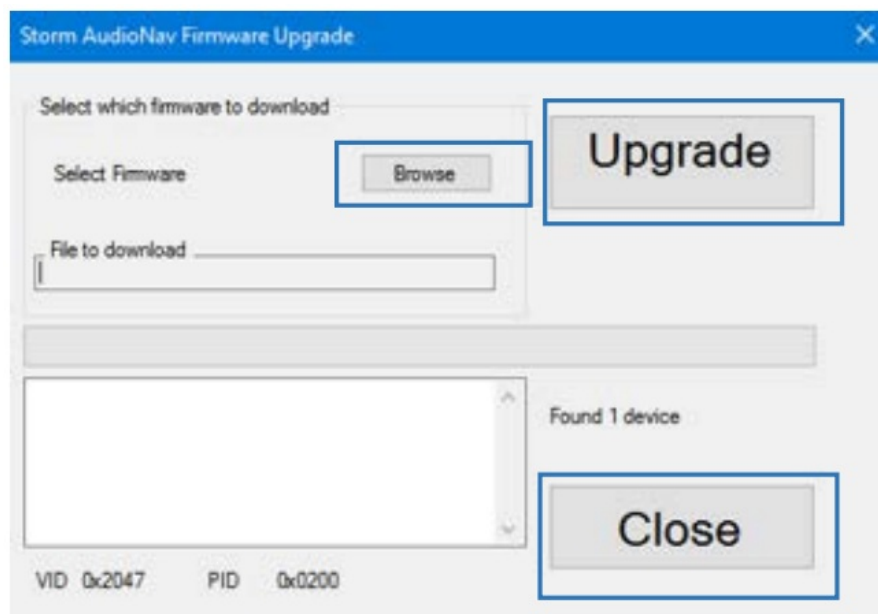
Update the Firmware



- Check the correct hardware device is connected
- Press Yes

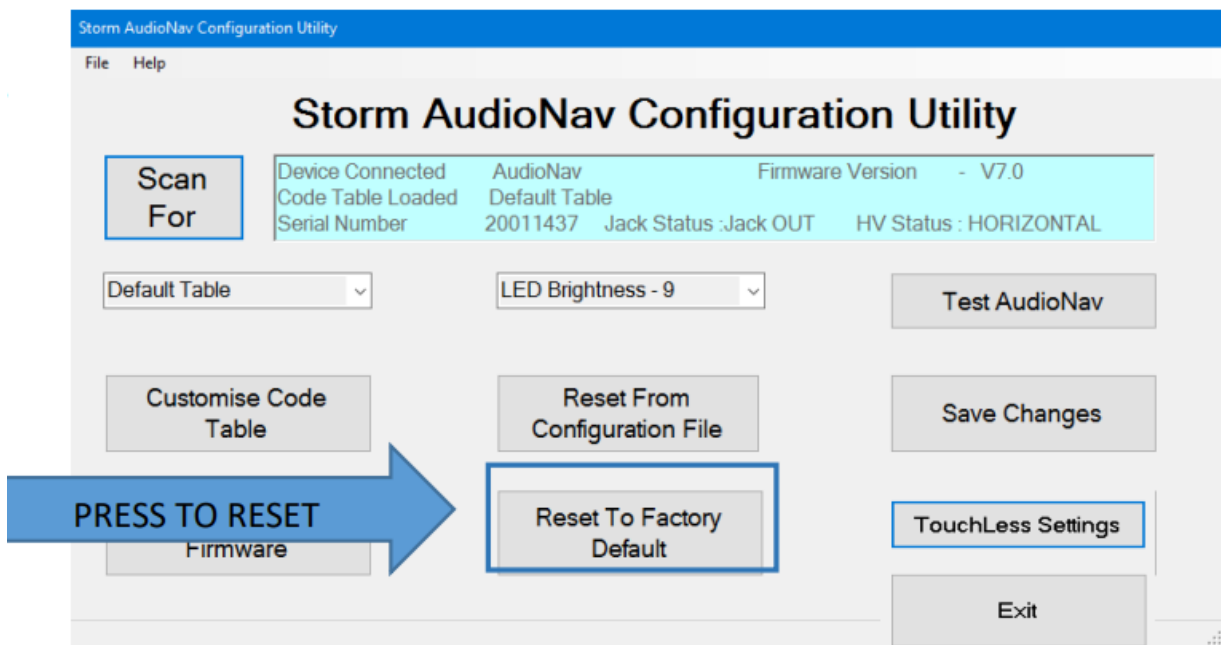


- BROWSE for the file press UPGRADE and CLOSE



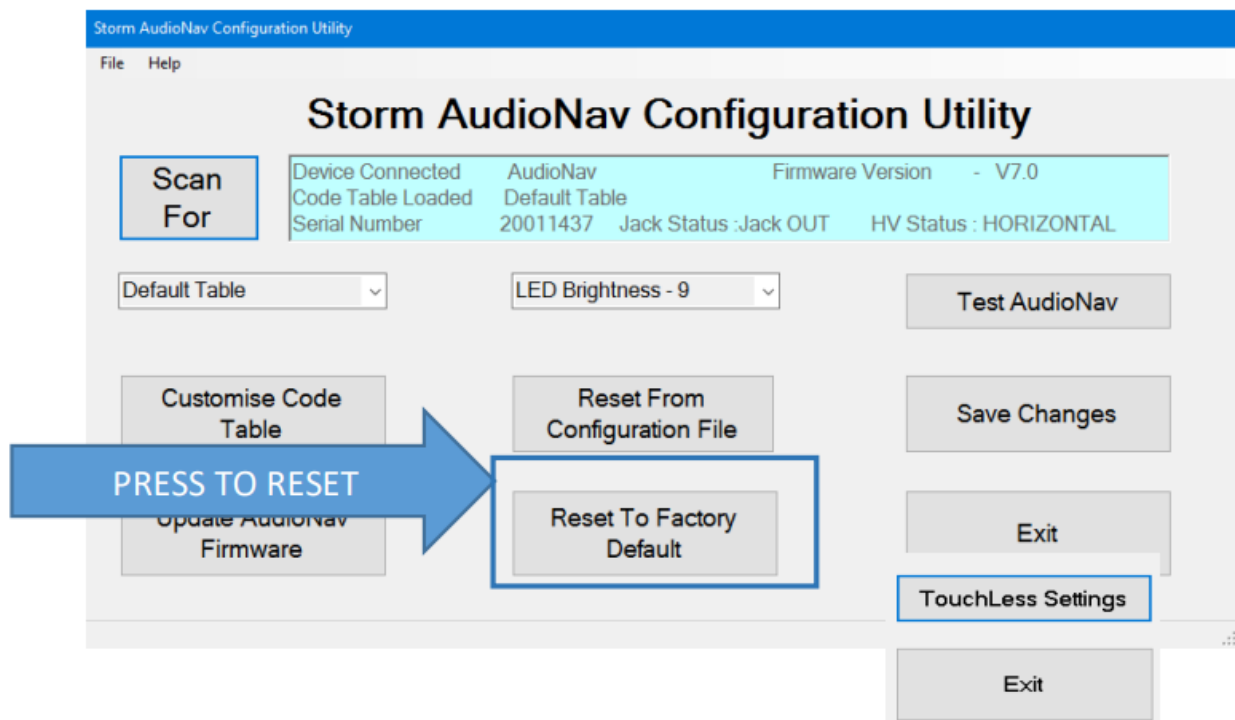
Reset the AudioNav to Factory Defaults

Clicking on "Factory Default" will reset the keypad to factory settings Code Table – Default LED brightness – 9



Reset the AudioNav from a saved Configuration

- You can load the saved settings onto another AudioNav.



- This is useful (for example) you have set up a customised table and you wish to load this table on a number of devices
- Press to reset to load the saved settings from the previous device onto the device that is currently connected

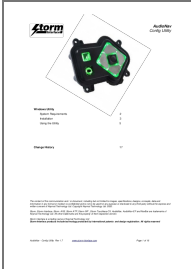
Change History

Instructions for	<u>Date</u>	<u>Version</u>	<u>Details</u>
Config Utility	13 Sep 19	1.0	First release (split out from AudioNav tech manual)
	02 Sep 20	1.1	Page numbers added to ToC
	06 Jan 21	1.2	Utility update
	01 Oct 21	1.3	Add Bluetooth options
	21 Feb 23	1.4	Updated screenshots
	19 Dec 23	1.5	New instructions for remote update
	07 Mar 24	1.6	New ver Utility 13
	15 Aug 24	1.7	Removed API (split out into separate document)

Configuration Utility	<u>Date</u>	<u>Version</u>	<u>Details</u>
	29 Jul 15	2.0	First Release
	08 Sep 17	3.0	Added Win 10 Compatibility
	20 Sep 20	4.0	Recompiled with Visual Studio 2017 (includes more system dll files)
	20 Nov 20	4.1	Bug fix ref PDR3477– image file was missing from package causing Exception Error in customise code function.
	06 Jan 21	5.0	Added test of mic function
	10 Jun 21	6.0	Added support for multicode key press
	02 Aug 21	7.0	Added Bluetooth option
	01 Sep 21	8.0	Added function to enable BLE
	17 Jan 22	9.0	New user license agreement & remove BLE timeout function
	05 Sep 22	10.0	Added additional orientations
	21 Feb 23	11.0	Added support for product type. Before firmware is upgraded the app warns customers to make sure correct hardware is plugged. It also reports what hardware version is connected.
	07 Mar 24	13.0	Now compatible with .NET8

www.storm-interface.com

Documents / Resources



[Storm Interface AudioNav-EF Extended Functionality And Audible System](#) [pdf]

Installation Guide

AudioNav-EF, AudioNav-TX, AudioNav-EF Extended Functionality And Audible System, AudioN
av-EF, Extended Functionality And Audible System, Functionality And Audible System, And Aud
ible System, Audible System, System

References

- [User Manual](#)

[Manuals+](#), [Privacy Policy](#)

This website is an independent publication and is neither affiliated with nor endorsed by any of the trademark owners. The "Bluetooth®" word mark and logos are registered trademarks owned by Bluetooth SIG, Inc. The "Wi-Fi®" word mark and logos are registered trademarks owned by the Wi-Fi Alliance. Any use of these marks on this website does not imply any affiliation with or endorsement.