

# Storm Interface 450 Series USB Encoder Configuration Utility User Guide



450 Series USB Encoder  
Configuration Utility



To customise the output codes just download and install the Configuration Utility from [www.storm-interface.com](http://www.storm-interface.com)  
This lets you do the following :-

Scan the encoder in order to	Confirm the encoder is connected Show which version of firmware is installed Show which keypad is set (4, 12 or 16 key) Show which code table is selected (default, alternate or customised)
And also	Change the keypad setting Change the selected code table Change the buzzer volume (450i only) Change the brightness on illuminated keypads (450i only) Self test the encoder
For re-legendable keypads	Customise the code table by assigning a USB code to each key Add a modifier in front of each USB code Save this configuration Export or Import configuration files
For maintenance purposes	Update the encoder firmware if a new version is released Restore all settings to original factory defaults.

F.A.Q's

Does this encoder need a special driver ?	No – it works with the standard USB keyboard driver.
Does the utility work on any pc ?	At present it does not run on Linux or Mac OS. The utility requires Windows 10 or later.

Download from [www.storm-interface.com](http://www.storm-interface.com) and install on a Windows PC (Win 10 or later)

Run the application.

Plug in the encoder + keypad.

Scan the encoder. The configuration will be displayed as below on the home screen.

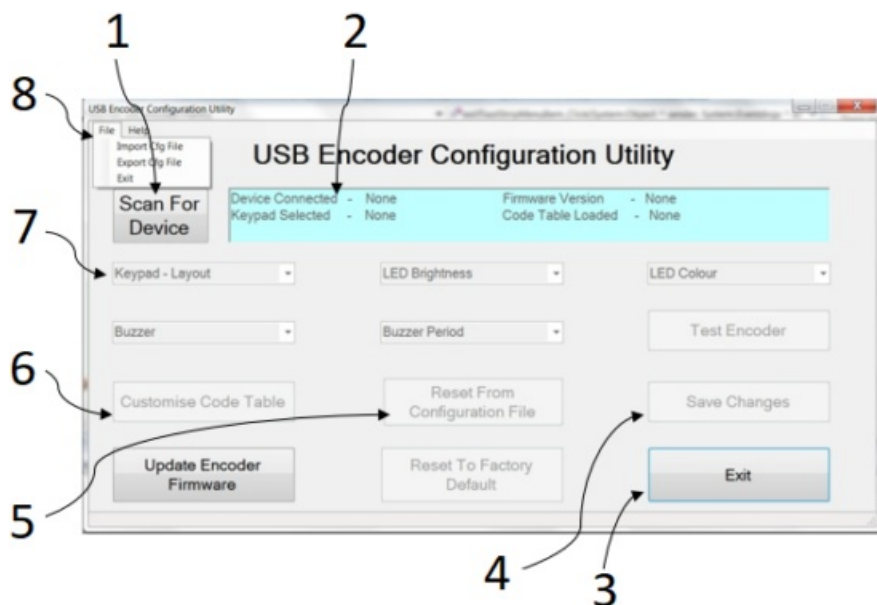
If you have a standard layout keypad then the output from the default code table will correspond to the keypad  
If you have a keypad designed to allow customisation of keytop graphics then you need to assign a code to each key.

The configuration file is saved to the pc and to the encoder when the **Save Changes** button is pressed.

Use the dropdown boxes to change settings on the 450i Encoder for

- Brightness
- Buzzer

LED Colour is White only



1. Press **"Scan for Device"** to find connected encoder
2. Device details are displayed
  - Encoder Type
  - Keypad
  - Code Table
  - Firmware Version
3. Press **"Exit"**

4. Press “**Save Changes**” to save your changes onto the pc and also onto the encoder
5. Press “**Reset from Configuration File**” to use the configuration that you have already created and saved
6. Press “**Customise Code Table**” to change the customised code table  
See following pages for the Code Table Screen
7. To change the code table use the drop down box
8. Use the File Menu to Import /Export Configuration Files

For product updates / reset, use the buttons for

- Updating the firmware if a new version is released
- Reset all settings to factory defaults
- Self Test the encoder

### Customising the Code Table

The utility displays a screen that shows for each key

- Which USB code is assigned
- Which modifier ( if any ) is applied to the USB code.

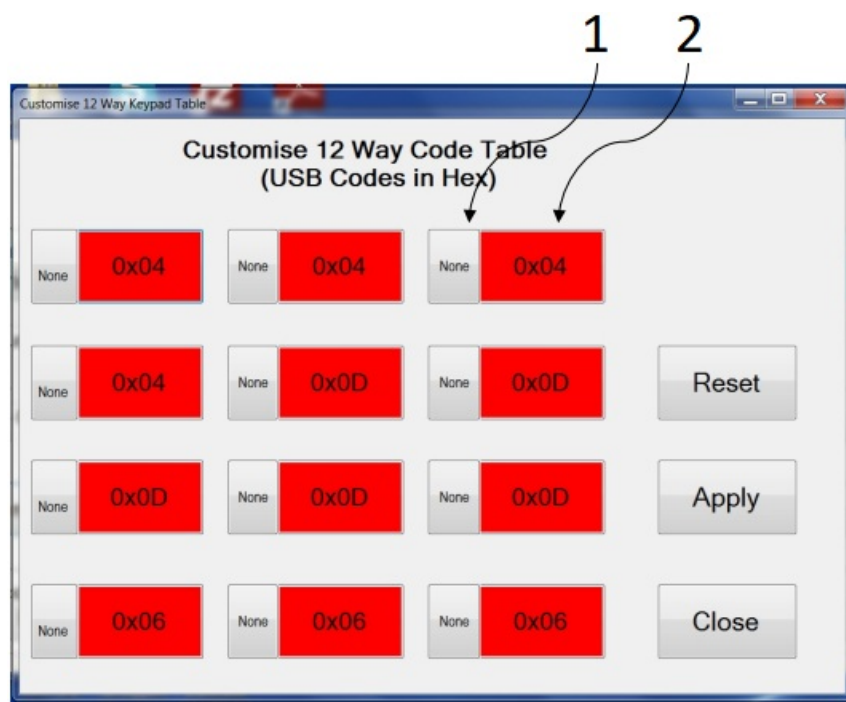
Click on each position and select a USB code from the drop down list.

Add a modifier for each position if required.

Press “**Apply**” to reserve your changes.  
This does not save the changes at this stage.

Press “**Close**” to return to the home screen

“**Reset**” reloads the default code table



1. Modifier
2. USB Code

The full list of USB Codes is shown on the following pages.

USB Codes that have been checked in Word are shown in the relevant column, for example :

			Un-shifted	Shifted
Code	0x04	gives	a	A

Where the same USB code gives a different character dependent on the host language setting then this is shown in the relevant language column.

The actual function of the USB code is determined by the application; not all codes have a function in every application.

### Updating the Firmware

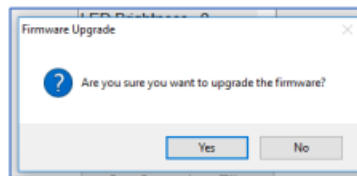
When you update the firmware the utility keeps a copy of your configuration (including any customised codes, and reloads it back on the encoder as part of the firmware update process

Download the new firmware from [www.storm-interface.com](http://www.storm-interface.com),

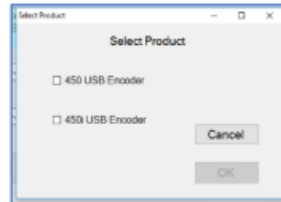
Connect the encoder.

Press **Scan for Device** to find the connected encoder

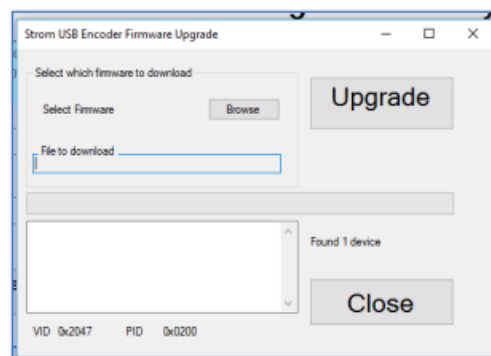
Press **Update Encoder Firmware** and press **Yes**



Select encoder type and press **OK**

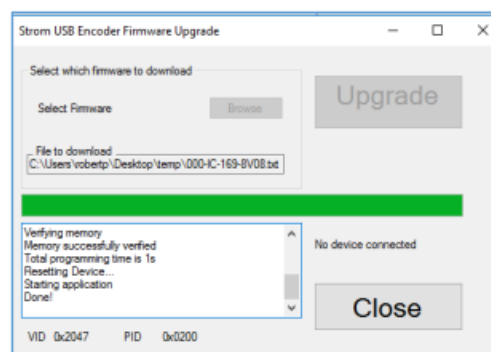


Browse to locate the firmware file and press **Upgrade**



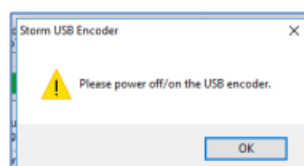
The progress bar shows in green.

When progress is complete press **Close**



Unplug the cable

Re-connect the cable and press **OK**



Press **Scan For** and the new version of firmware will be displayed

Scan For

Device Connected - Storm 450i Encoder

Firmware Version - V8.0

Keypad Selected - 16W

Code Table Loaded - 16W Telephone Table

Full Code Table Reference

450 Series USB Encoder with Firmware Revision 8v04 Using Generic HID Keyboard DriverWhen customising the code table on the encoder you can place a modifier in front of the USB Code			Any Language differences (using Word)									
e.g. E1 , 34 will give you @			English U.K. (if different to U.S.)		English U.S.			F	G	S		
USB Usage ID (Dec)	USB Usage ID (Hex)	Usage Name	Note	Un-shifted	Shifted	Un-shifted	Shifted	Num lock				
00	00	Reserved (no event indicated)	9									
01	01	Keyboard Error Roll Over	9									
02	02	Keyboard POST Fail	9									
03	03	Keyboard Error Undefined	9									
04	04	Keyboard a and A	4			a	A					
05	05	Keyboard b and B				b	B					
06	06	Keyboard c and C	4			c	C					
07	07	Keyboard d and D				d	D					
08	08	Keyboard e and E				e	E					
09	09	Keyboard f and F				f	F					

10	0A	Keyboard g and G			<b>g</b>	<b>G</b>				
11	0B	Keyboard h and H			<b>h</b>	<b>H</b>				
12	0C	Keyboard i and I			<b>i</b>	<b>I</b>				
13	0D	Keyboard j and J			<b>j</b>	<b>J</b>				
14	0E	Keyboard k and K			<b>k</b>	<b>K</b>				
15	0F	Keyboard l and L			<b>l</b>	<b>L</b>				
16	10	Keyboard m and M	4		<b>m</b>	<b>M</b>				
17	11	Keyboard n and N			<b>n</b>	<b>N</b>				
18	12	Keyboard o and O	4		<b>o</b>	<b>O</b>				
19	13	Keyboard p and P	4		<b>p</b>	<b>P</b>				
20	14	Keyboard q and Q	4		<b>q</b>	<b>Q</b>				
21	15	Keyboard r and R			<b>r</b>	<b>R</b>				
22	16	Keyboard s and S	4		<b>s</b>	<b>S</b>				
23	17	Keyboard t and T			<b>t</b>	<b>T</b>				
24	18	Keyboard u and U			<b>u</b>	<b>U</b>				
25	19	Keyboard v and V			<b>v</b>	<b>V</b>				
26	1A	Keyboard w and W	4		<b>w</b>	<b>W</b>				





44	2C	Keyboard Spacebar								
45	2D	Keyboard – and (underscore) <sup>4</sup>	4			–	–			
46	2E	Keyboard = and +	4			=	+			
47	2F	Keyboard [ and {	4			[	{			
48	30	Keyboard ] and }	4			]	}			
49	31	Keyboard \ and				\				
50	32	Keyboard Non-US # and ~	2	#	~	\				
51	33	Keyboard ; and :	4			;	:			
52	34	Keyboard ‘ and “	4	‘	@	‘	“			
53	35	Keyboard Grave Accent and Tilde	4			`	~			
54	36	Keyboard, and <	4			,	<			
55	37	Keyboard . and >	4			.	>			
56	38	Keyboard / and ?	4			/	?			
57	39	Keyboard Caps Lock <sup>11</sup>	1 1							
58	3A	Keyboard F1				<b>F1</b>				
59	3B	Keyboard F2				<b>F2</b>				
60	3C	Keyboard F3				<b>F3</b>				
61	3D	Keyboard F4				<b>F4</b>				

62	3E	Keyboard F5			F5					
63	3F	Keyboard F6			F6					
64	40	Keyboard F7			F7					
65	41	Keyboard F8			F8					
66	42	Keyboard F9			F9					
67	43	Keyboard F10			F10					
68	44	Keyboard F11			F11					
69	45	Keyboard F12			F12					
70	46	Keyboard PrintScreen	1							
71	47	Keyboard Scroll Lock	1 1							
72	48	Keyboard Pause	1							
73	49	Keyboard Insert	1							
74	4A	Keyboard Home	1		Home	Select line of text				
75	4B	Keyboard PageUp	1		PgUp	Select text ab ove				
76	4C	Keyboard Delete Forward	1 , 1 4		Delet e	Select text forward				

77	4D	Keyboard End	1		End	Select to end			
78	4E	Keyboard PageDown	1		PgDn	Select to page down			
79	4F	Keyboard RightArrow	1		Goes right	Select to right			
80	50	Keyboard LeftArrow	1		Goes left	Select to left			
81	51	Keyboard DownArrow	1		Goes down	Select line down			
82	52	Keyboard UpArrow	1		Goes up	Select line up			
83	53	Keypad Num Lock and Clear	1 1		Toggles NumLock				
84	54	Keypad /	1		/				
85	55	Keypad *			*				
86	56	Keypad –			–				
87	57	Keypad +			+				
88	58	Keypad ENTER			Enter				
89	59	Keypad 1 and End			End		1		
90	5A	Keypad 2 and Down Arrow			Down arrow		2		
91	5B	Keypad 3 and PageDn			Page down		3		

92	5C	Keypad 4 and Left Arrow			<b>Left arrow</b>		<b>4</b>			
93	5D	Keypad 5					<b>5</b>			
94	5E	Keypad 6 and Right Arrow			<b>Right arrow</b>		<b>6</b>			
95	5F	Keypad 7 and Home			<b>Home</b>		<b>7</b>			
96	60	Keypad 8 and Up Arrow			<b>Up arrow</b>		<b>8</b>			
97	61	Keypad 9 and PageUp			<b>Page up</b>		<b>9</b>			
98	62	Keypad 0 and Insert					<b>0</b>			
99	63	Keypad . and Delete			.		.			
100	64	Keyboard Non-US \ and	3 , 6		\					
101	65	Keyboard Application	1 2							
102	66	Keyboard Power	9							
103	67	Keypad =			= on Mac O/S only					
104	68	Keyboard F13								
105	69	Keyboard F14								
106	6A	Keyboard F15								

107	6B	Keyboard F16								
108	6C	Keyboard F17								
109	6D	Keyboard F18								
110	6E	Keyboard F19								
111	6F	Keyboard F20								
112	70	Keyboard F21								
113	71	Keyboard F22								
114	72	Keyboard F23								
115	73	Keyboard F24								
116	74	Keyboard Execute								
117	75	Keyboard Help								
118	76	Keyboard Menu								
119	77	Keyboard Select								
120	78	Keyboard Stop								
121	79	Keyboard Again								
122	7A	Keyboard Undo								
123	7B	Keyboard Cut								

124	7C	Keyboard Copy								
125	7D	Keyboard Paste								
126	7E	Keyboard Find								
127	7F	Keyboard Mute								
128	80	Keyboard Volume Up								
129	81	Keyboard Volume Down								
130	82	Keyboard Locking Caps Lock	1 2							
131	83	Keyboard Locking Num Lock	1 2							
132	84	Keyboard Locking Scroll Lock	1 2							
133	85	Keypad Comma	2 7							
134	86	Keypad Equal Sign	2 9							
135	87	Keyboard International115								
136	88	Keyboard International216								
137	89	Keyboard International317								
138	8A	Keyboard International418								
139	8B	Keyboard International519								

140	8C	Keyboard International620								
141	8D	Keyboard International721								
142	8E	Keyboard International822								
143	8F	Keyboard International922								
144	90	Keyboard LANG125								
145	91	Keyboard LANG226								
146	92	Keyboard LANG330								
147	93	Keyboard LANG431								
148	94	Keyboard LANG532								
149	95	Keyboard LANG68								
150	96	Keyboard LANG78								
151	97	Keyboard LANG88								
152	98	Keyboard LANG98								
153	99	Keyboard Alternate Erase7								
154	9A	Keyboard SysReq/Attention1								
155	9B	Keyboard Cancel								
156	9C	Keyboard Clear								

157	9D	Keyboard Prior								
158	9E	Keyboard Return								
159	9F	Keyboard Separator								
160	A0	Keyboard Out								
161	A1	Keyboard Oper								
162	A2	Keyboard Clear/Again								
163	A3	Keyboard CrSel/Props								
164	A4	Keyboard ExSel								
224	E0	Keyboard LeftControl								
225	E1	Keyboard LeftShift								
226	E2	Keyboard LeftAlt								
227	E3	Keyboard Left GUI	1 0 , 2 3							
228	E4	Keyboard RightControl								
229	E5	Keyboard RightShift								
230	E6	Keyboard RightAlt								



231	E7	Keyboard Right GUI	1 0 . 2 4							

#### Notes on the Code Tables 1-15, 20-34

1 Usage of keys is not modified by the state of the Control, Alt, Shift or Num Lock keys. That is, a key does not send extra codes to compensate for the state of any Control, Alt, Shift or Num Lock keys.

2 Typical language mappings: US: \| Belg: fÊ` FrCa: <> Dan:f\* Dutch: <> Fren:\*fÊ Ger: #f Ital: u~ LatAm: }`] Nor:,\* Span: }C Swed: ,\* Swiss: \$' UK: #~.

3 Typical language mappings: Belg:<\> FrCa:áâ Dan:<\> Dutch:]][ Fren:<> Ger:<|> Ital:<> LatAm:<> Nor:<> Span:<> Swed:<|> Swiss:<\> UK:\| Brazil: \|.

4 Typically remapped for other languages in the host system.

5 Keyboard Enter and Keypad Enter generate different Usage codes.

6 Typically near the Left-Shift key in AT-102 implementations.

7 Example, Erase-Eaze. key.

8 Reserved for language-specific functions, such as Front End Processors and Input Method Editors.

9 Reserved for typical keyboard status or keyboard errors. Sent as a member of the keyboard array. Not a physical key.

10 Windows key for Windows 95, and gCompose.h

11 Implemented as a non-locking key; sent as member of an array.

12 Implemented as a locking key; sent as a toggle button. Available for legacy support; however, most systems should use the non-locking version of this key.

13 Backs up the cursor one position, deleting a character as it goes.

14 Deletes one character without changing position.

15-20 See additional foot notes in the USB spec

21 Toggle double-byte/single-byte mode

22 Undefined, available for other front end language processors

23 Windowing environment key, examples are Microsoft left win key, mac left apple key, sun left meta key

24 Windowing environment key, example are Microsoft right win key, macintosh right apple key, sun right meta key

## Copyright Notice

This document is provided for use and guidance of engineering personnel engaged in the installation or application of Storm Interface data entry products manufactured by Keymat Technology Ltd. Please be advised that all information, data and illustrations contained within this document remain the exclusive property of Keymat Technology Ltd. and are provided for the express and exclusive use as described above.

This document is not supported by Keymat Technology's engineering change note, revision or reissue system. Data contained within this document is subject to periodic revision, reissue or withdrawal. Whilst every effort is made to ensure the information, data and illustrations are correct at the time of publication, Keymat Technology Ltd. are not responsible for any errors or omissions contained within this document.

No part of this document may be reproduced in any form or by any means or used to make any derivative work (such as translation or adaptation) without written permission from Keymat Technology Ltd.

For more information about Storm Interface and its products, please visit our website at [www.storm-interface.com](http://www.storm-interface.com) © Copyright Storm Interface. 2013 All rights reserved

=====

## Copyright Acknowledgement

This product uses binary format of the hidapi dll, Copyright (c) 2010, Alan Ott, Signal 11 Software. All rights reserved.

THIS SOFTWARE IS PROVIDED BY THE COPYRIGHT HOLDERS AND CONTRIBUTORS "AS IS" AND ANY EXPRESS OR IMPLIED WARRANTIES, INCLUDING, BUT NOT LIMITED TO, THE IMPLIED WARRANTIES OF MERCHANTABILITY AND FITNESS FOR A PARTICULAR PURPOSE ARE DISCLAIMED. IN NO EVENT SHALL THE COPYRIGHT HOLDER OR CONTRIBUTORS BE LIABLE FOR ANY DIRECT, INDIRECT, INCIDENTAL, SPECIAL, EXEMPLARY, OR CONSEQUENTIAL DAMAGES (INCLUDING, BUT NOT LIMITED TO, PROCUREMENT OF SUBSTITUTE GOODS OR SERVICES; LOSS OF USE, DATA, OR PROFITS; OR BUSINESS INTERRUPTION) HOWEVER CAUSED AND ON ANY THEORY OF LIABILITY, WHETHER IN CONTRACT, STRICT LIABILITY, OR TORT (INCLUDING NEGLIGENCE OR OTHERWISE) ARISING IN ANY WAY OUT OF THE USE OF THIS SOFTWARE, EVEN IF ADVISED OF THE POSSIBILITY OF SUCH DAMAGE.

## Change History

Instructions for Config Utility	<u>Date</u>	<u>Version</u>	<u>Details</u>	
	16 Aug 24	1.0	Split out from Engineering Manual	

USB Configuration Utility		<u>Date</u>	<u>Version</u>	<u>Details</u>
4500-SW01		1 Aug 13	2.1	First Release
		20 Aug 13	3.0	Increased size of modifier button + Increased size of Select Code Combo box.
		12 Nov 13	4.0	Update in line with 8v04 release
		01 Feb 22	5.1	Update user agreement wording

450 Series USB Encoder Config Utility v1.0 Aug 2024


[www.storm-interface.com](http://www.storm-interface.com)

Contents

1 Documents / Resources

1.1 References

Documents / Resources

	<p><a href="#">Storm Interface 450 Series USB Encoder Configuration Utility</a> [pdf] User Guide</p> <p>450 Series USB Encoder Configuration Utility, 450 Series, USB Encoder Configuration Utility, Encoder Configuration Utility, Configuration Utility, Utility</p>
--	--

References

- [User Manual](#)

[Manuals+](#), [Privacy Policy](#)

This website is an independent publication and is neither affiliated with nor endorsed by any of the trademark owners. The "Bluetooth®" word mark and logos are registered trademarks owned by Bluetooth SIG, Inc. The "Wi-Fi®" word mark and logos are registered trademarks owned by the Wi-Fi Alliance. Any use of these marks on this website does not imply any affiliation with or endorsement.