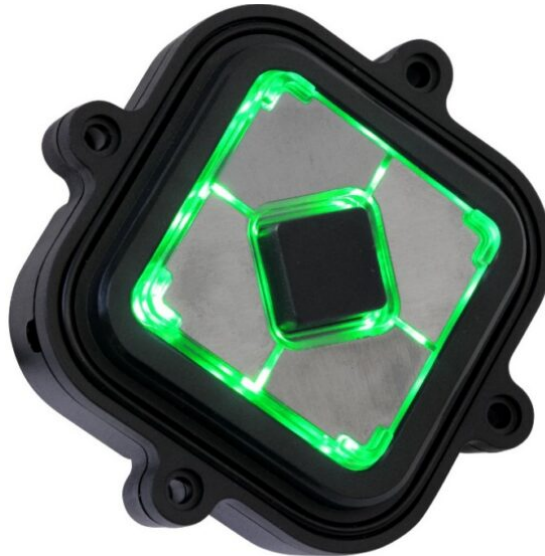


## Storm Interface 1600 Series USB Navigation Keypad Instruction Manual

[Home](#) » [Storm Interface](#) » Storm Interface 1600 Series USB Navigation Keypad Instruction Manual 



1600 Series USB  
Navigation Keypad  
Configuration Utility



## Contents

- [1 1600 Series USB Navigation Keypad](#)
- [2 Installing & Using the Configuration Utility](#)
- [3 LED Brightness](#)
- [4 Test Keypad](#)
- [5 Customise Keycode](#)
- [6 Documents / Resources](#)
  - [6.1 References](#)

## 1600 Series USB Navigation Keypad

### USB Codes

The Configuration Utility can be used to :-

- Control LED On/Off and brightness (0 to 9)
- Customise USB output codes
- Reset to factory default values
- Retrieve serial number
- Update device firmware

	OUTPUT CODES (STANDARD TABLE)	
Function	Hex	USB Description
Right	0x4F	Right Arrow
Left	0x50	Left Arrow
Down	0x51	Down Arrow
Up	0x52	Up Arrow
Select	0x28	Enter

### Installing & Using the Configuration Utility

The host application requires .NET framework to be installed on the PC and will communicate over the same usb connection via the HID-HID data pipe channel, no special drivers are required.

Windows OS	Compatibility
Windows 11,	Works OK
Windows 10	Works OK

The utility can be used to configure the following features:

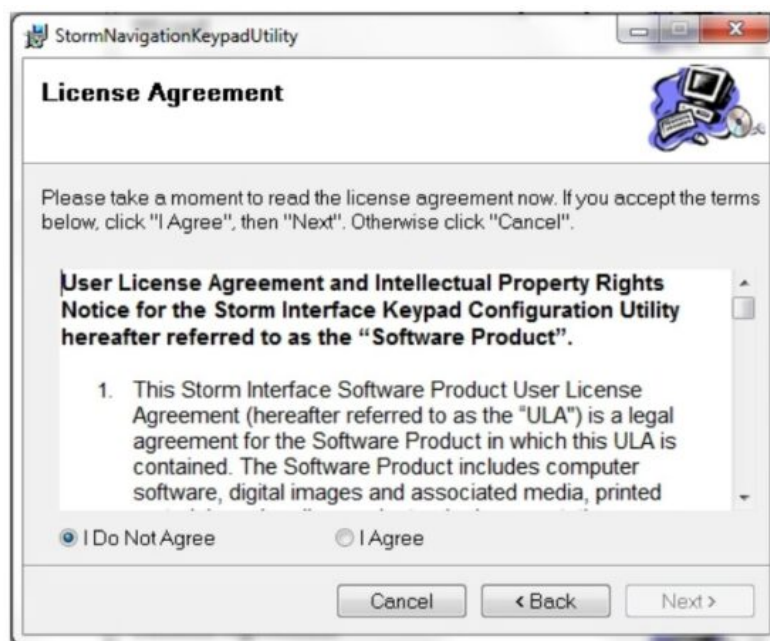
- LED On/Off
- LED brightness (0 to 9)

- Load customised keypad table
- Write default values from volatile memory to flash
- Reset to factory default
- Load Firmware

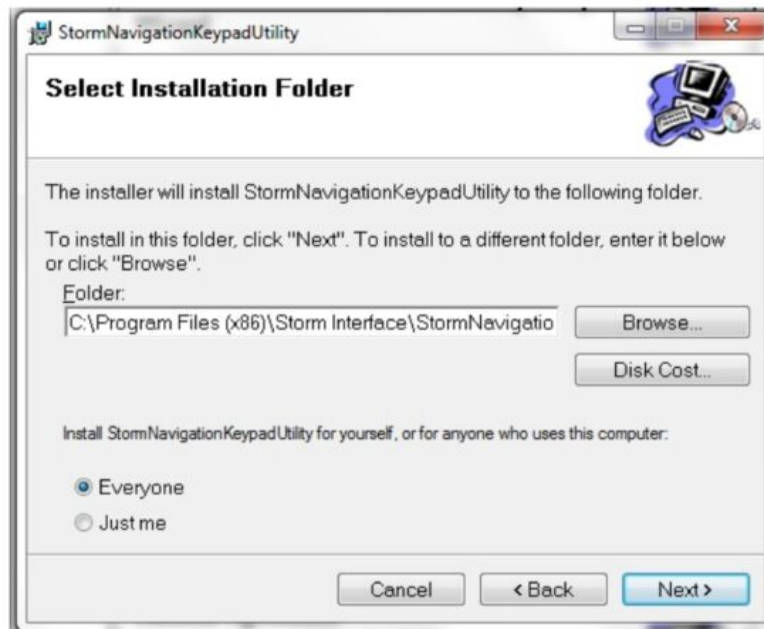
To install the utility, download from [www.storm-interface.com](http://www.storm-interface.com) , click on the setup.exe and follow the instructions as below:



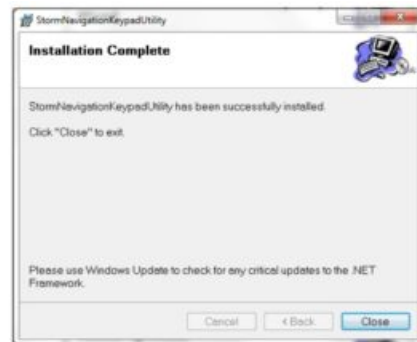
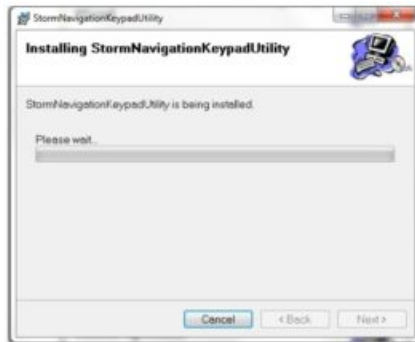
Click on “Next”



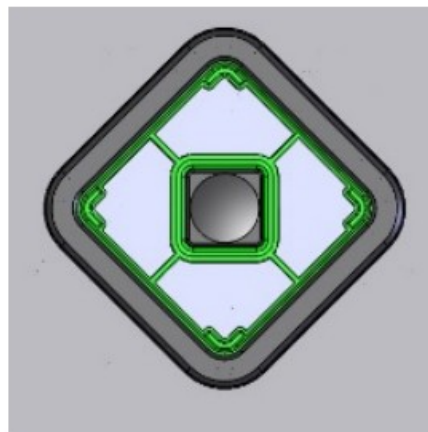
Select “I Agree” and Click on “Next”



Select if you would like to install for just you or everyone and select location if you do not want to install at default location. Then click on “Next”

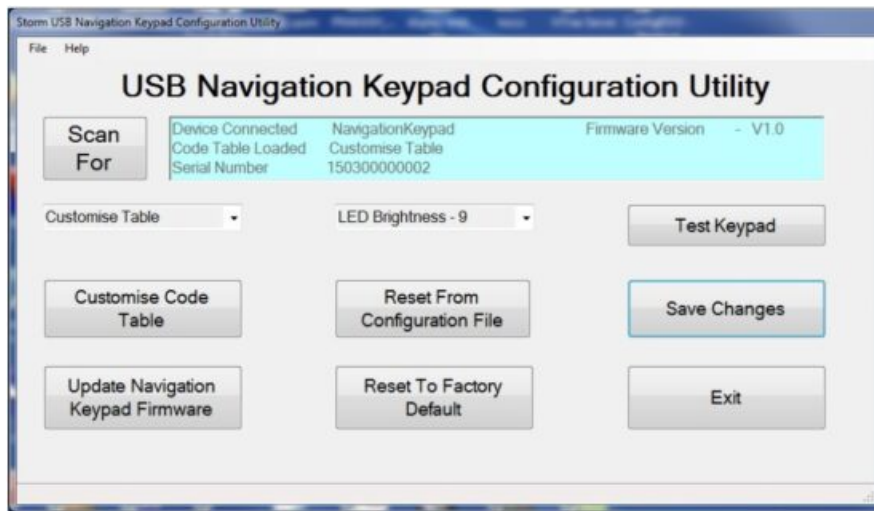


A shortcut will be installed on your Desktop



Double-click to launch the application

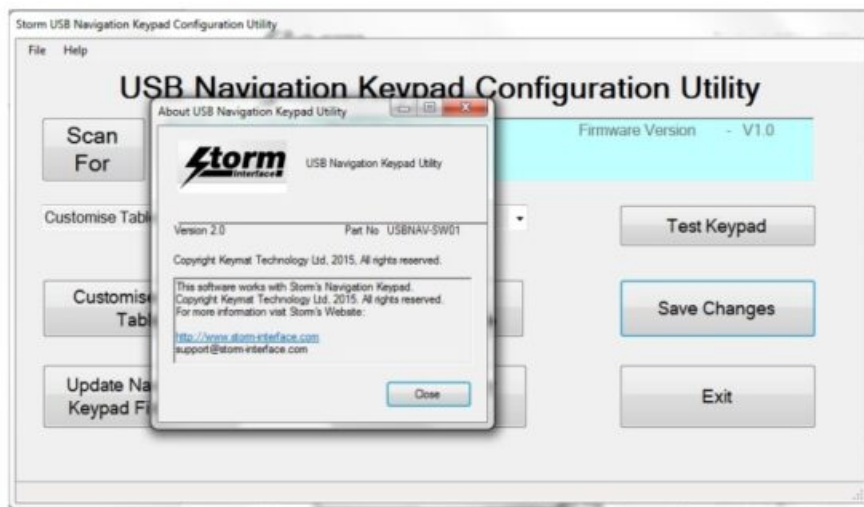
The utility will initially detect the keypad using the VID/PID and if found it sends a device status message. If all successful then all the buttons are enabled. If not then they will all be disabled except for “Scan” and “Exit”.



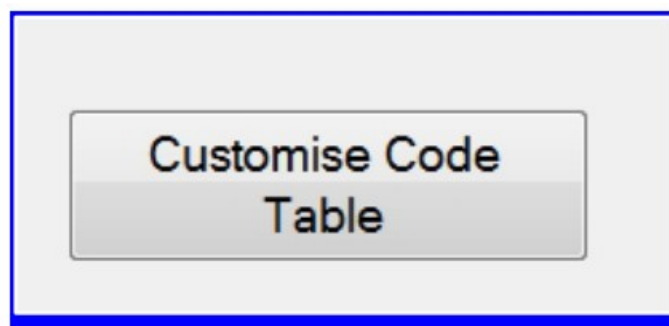
Each of the functions available is described on the following pages.

### Help

Clicking on the 'help' button opens a dialogue box. This dialogue box gives information about the version of the Configuration Utility installed.



### Customise Keycode Table



The user can select from three tables:

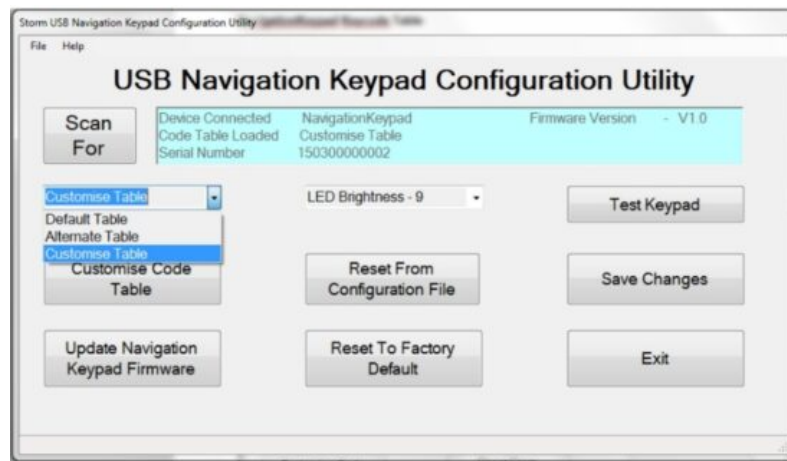
Default Table

Alternate Table

Customise Table

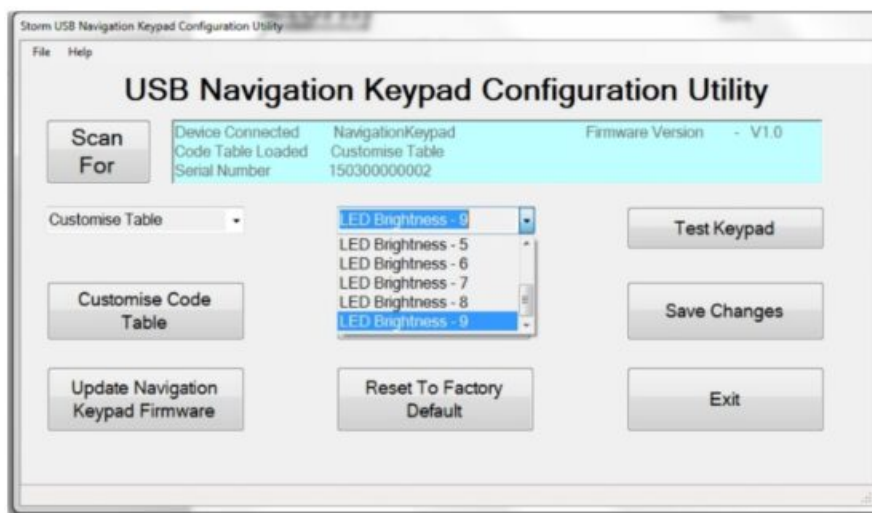
Once a table has been selected then the keypad will hold that configuration until it is powered down.

Once the keypad has been disconnected that configuration will be lost. To save the configuration in flash click on "Save Changes"



## LED Brightness

This will set the brightness of the LEDs. The selection is from 0 to 9.

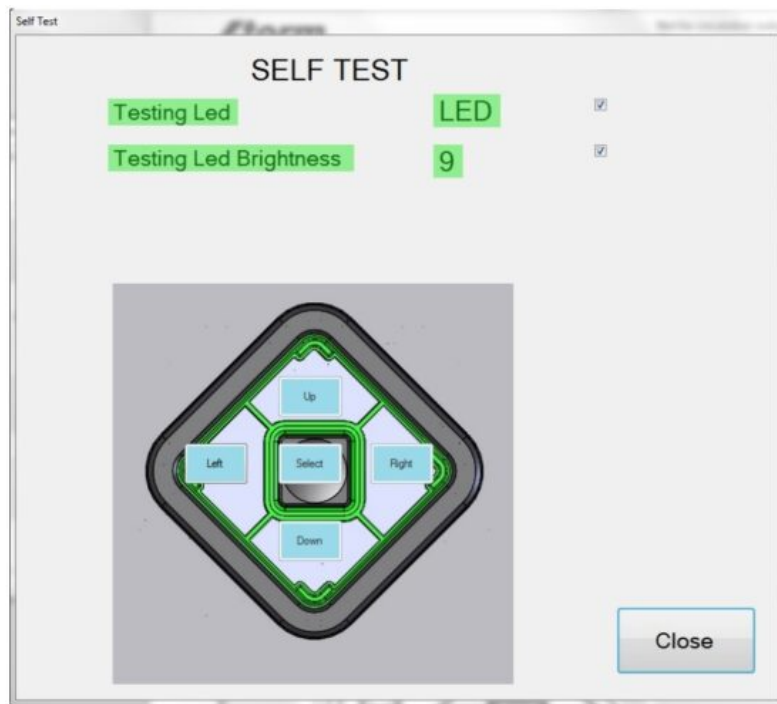


## Test Keypad

This will test all the functionality of keypad.

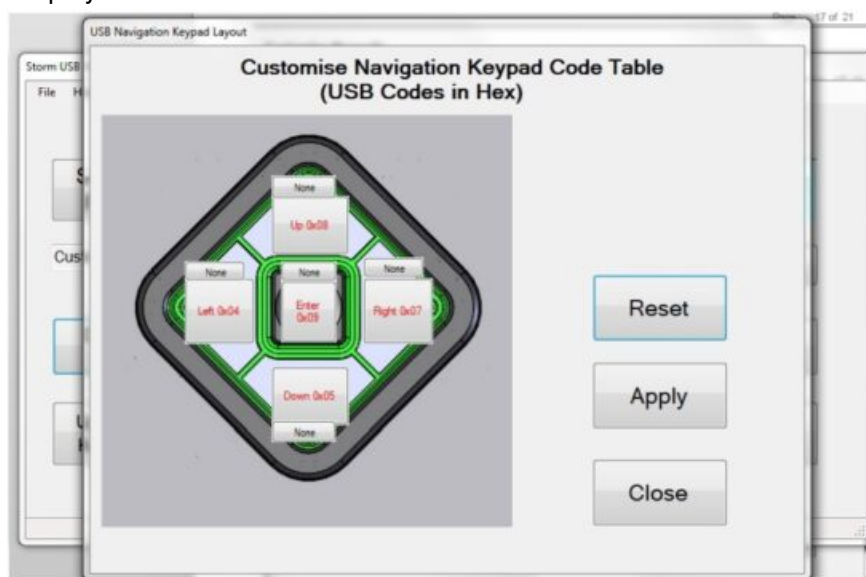
- Sequence the illumination over all dimming levels
- Key test

Click On "Test Keypad"



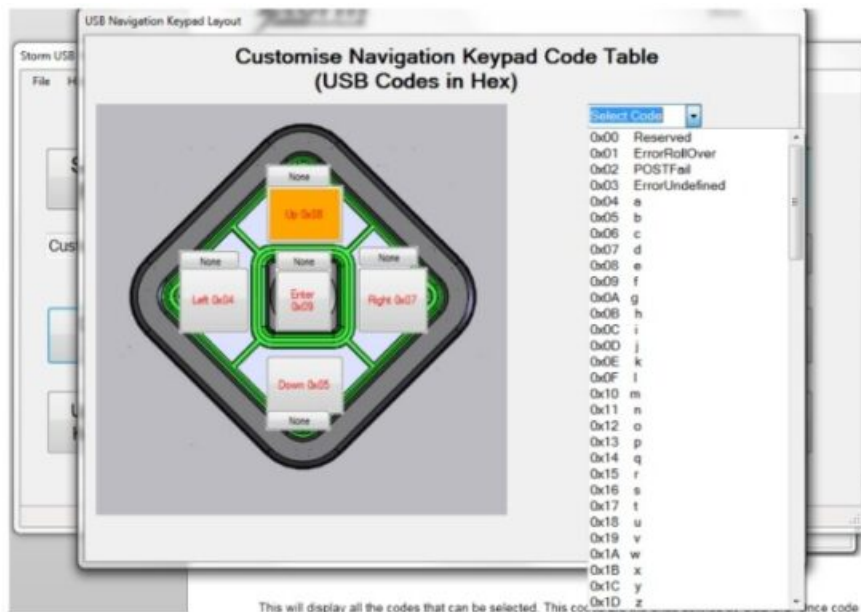
## Customise Keycode

The user can only enter into this menu if 'Customise Navigation Keypad Code Table' is selected. The following will be displayed when "Customise code" is clicked.



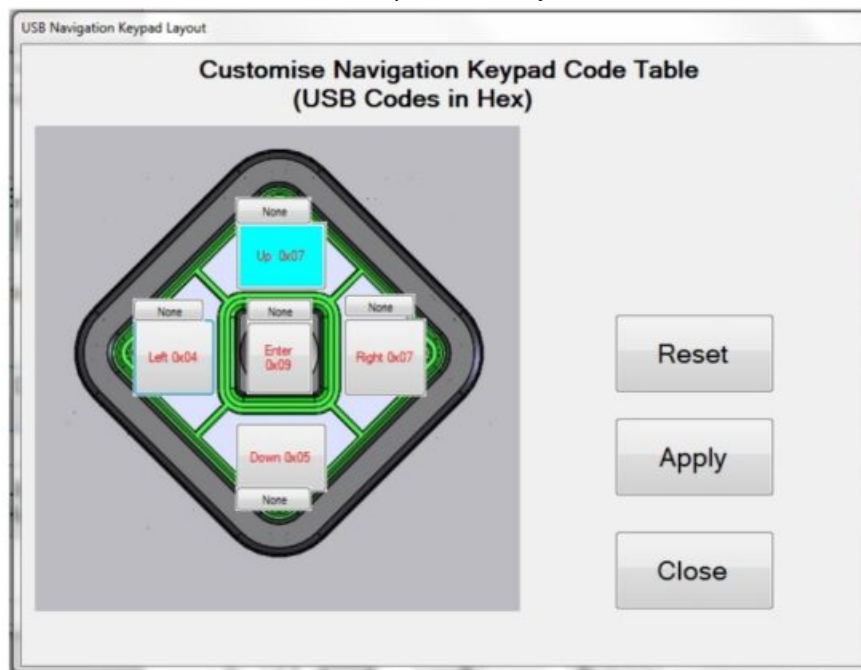
The utility will scan the keypad and extract the current customized code and display the key code on the individual keys. Attached to each key is another button ("NONE"), this shows the modifier for each key. To customize a key, click on the key and the Key Code combo box will appear, with "Select Code". Now press on the down arrow on the combo box:





The Customise Keypad Code Table displays the codes that can be selected..

These codes are the ones defined by USB.org. Once a code is selected, it will be displayed on the selected button. In this example I have selected “d” and the code is represented by 0x7.

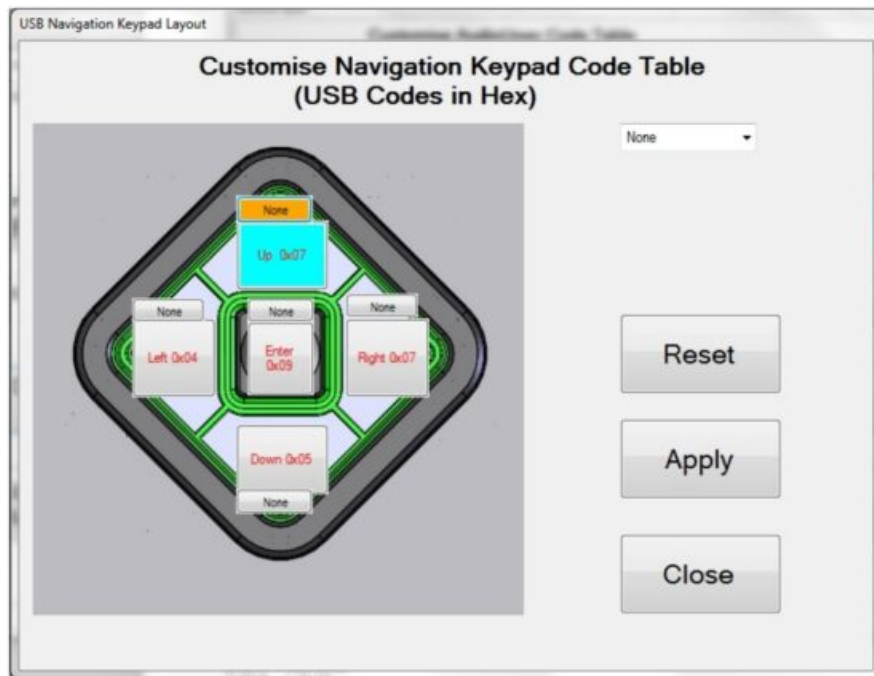


If the “Apply” button is selected, the code will be sent to the keypad and if you press UP key on keypad “d” should be sent to the relevant application. Now if you wanted a “D” (uppercase) then you need to add a SHIFT modifier for that key. Click on the modifier button for that key.

The background colour for modifier button will change to orange and modifier combo box will appear.

Select down arrow key on modifier combo box.





The following selection is available:

NONE

L SHT – Left Shift

L ALT – Left Alt

L CTL – Left Ctrl

L GUI – Left Gui

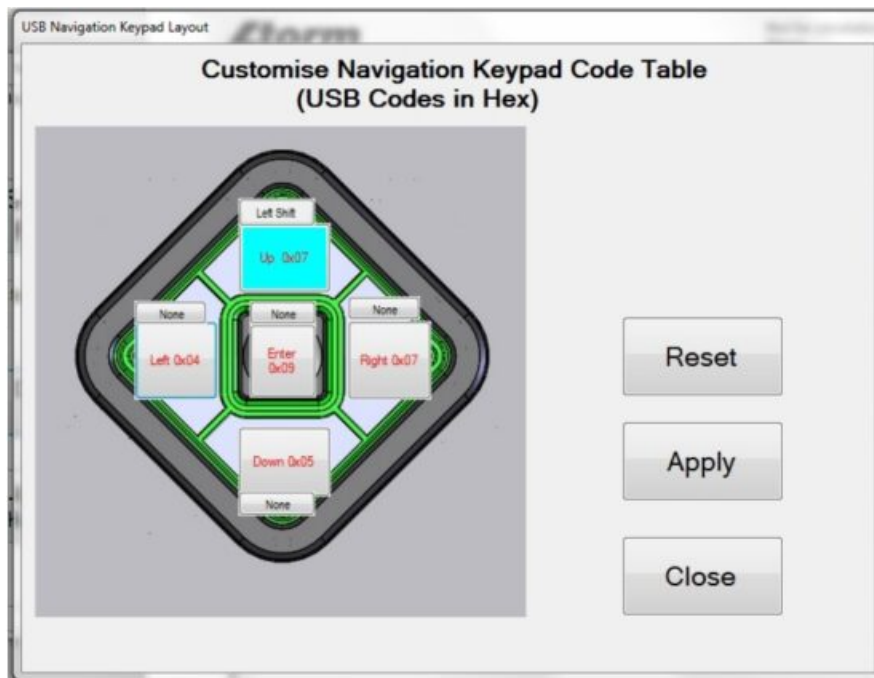
R SHT – Right Shift

R ALT – Right Alt

R CTL – Right Ctrl

R GUI – Right Gui

Select either L SHT or R SHT – I have selected L SHT.



The L SHT modifier is now displayed on button and background colour changed to grey. Now if you click on “Apply” and if successfully transferred then pressing Up on keypad should display “D” (uppercase).

If you did not want the current setting then click on “Reset” then all buttons will revert to original coding and then click on “apply” to send this coding to NavigationKeypad keypad.

“Exit” will exit the customize form and return back to main screen.

### Save Changes

All configurations, including the customized table is modified in volatile memory. So if after modifying and the user switches off the keypad then next time the encoder is powered on, it will revert back to previous configuration data. To save the modified data in non volatile memory, click on “Save Changes” button.

## Factory Default

Clicking on “Reset To Factory Default” will set the keypad with values that are preset, i.e.

NavigationKeypad – default table

LED brightness – 9

## Version Information

Instructions for	Date	Version	Details
Configuration Utility			
	15 Aug 2024	1.0	Introduced – split out from Tech Manual

Configuration Utility	Date	Version	Details
	4 Dec 16	2.0	Introduced
	19 Jan 21	3.0	Updated to not overwrite sn when loading saved configuration
	02 Feb 21	3.1	New user license agreement


————— END OF DOCUMENT —————

The content of this communication and/or document, including but not limited to images, specifications, designs, concepts and information is confidential and is not to be used for any purpose or disclosed to any third party without the express and written consent of  
Keymat Technology Ltd., Copyright 2015. All rights reserved.



1600 Series USB Navigation  
Keypad Configuration Utility Rev 1.0 Aug 2024  
[www.storm-interface.com](http://www.storm-interface.com)

## Documents / Resources

	<a href="#">Storm Interface 1600 Series USB Navigation Keypad [pdf] Instruction Manual</a> 1600 Series USB Navigation Keypad, 1600 Series, USB Navigation Keypad, Navigation Keypad, Keypad
---	--

## References

- [User Manual](#)

[Manuals+](#), [Privacy Policy](#)

This website is an independent publication and is neither affiliated with nor endorsed by any of the trademark owners. The "Bluetooth®" word mark and logos are registered trademarks owned by Bluetooth SIG, Inc. The "Wi-Fi®" word mark and logos are registered trademarks owned by the Wi-Fi Alliance. Any use of these marks on this website does not imply any affiliation with or endorsement.