
STOBAG Built In Awnings For Harmonious Instruction Manual

June 19,
2025



Contents [[hide](#)]

1 VIVO Hide & SURAVA Hide

1.1 FAÇADE-INTEGRATED AWNINGS. ARCHITECTURE AND FUNCTION PERFECTLY COMBINED.

1.2 VIVO Hide - BUILT-IN AWNING FOR NICHES

1.3 TECHNICAL DETAILS

1.4 SURAVA Hide - VERTICAL AWNING FOR NICHES

2 Documents / Resources

2.1 References

VIVO Hide & SURAVA Hide

Built-in awnings for harmonious integration into the façade.



SURAVA Hide – Vertical Recessed Awning

Suitable for loggia application

Discreet cable guide system

Fabric with 5% transparency

FAÇADE-INTEGRATED AWNINGS.

ARCHITECTURE AND FUNCTION PERFECTLY COMBINED.



STOBAG built-in awnings for recesses are meticulously designed to enhance a building's overall aesthetic. When retracted, they blend seamlessly into the façade, ensuring harmonious architectural integration.

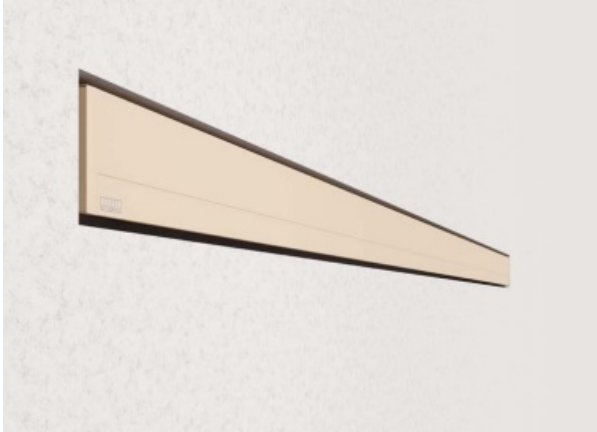
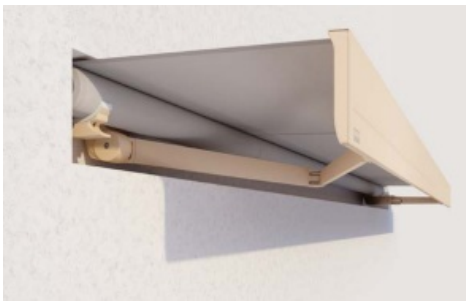
With VIVO Hide and SURAVA Hide, you are choosing functionality combined with impeccable aesthetics.

Our team of architects, in collaboration with our specialized project partners, will advise and support you through every phase of your project from planning to implementation.



VIVO Hide - BUILT-IN AWNING FOR NICHES

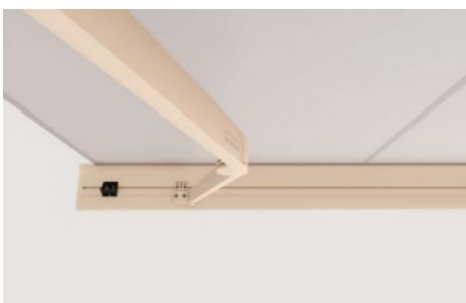
VIVO Hide is defined by its compact design and boasts the smallest niche installation depth on the market. This allows for seamless integration into any architectural style - whether in new constructions or renovation projects. VIVO Hide also enables quick, straightforward installation, contributing to overall cost efficiency.



A mechanism that can be precisely adjusted in three dimensions allows the flat projecting profile to be fine-tuned in height, depth, and inclination. This compensates for building tolerances and ensures uniform gap dimensions for a flawless façade appearance.


To match the façade, a custom-designed panel weighing up to 3 kg / m can be mounted on the drop profile on-site. A solution that sets new standards in design.


The minimalist design is aesthetically pleasing both when retracted and extended, blending seamlessly into the building's overall appearance. Ideal for terraces, attics, and balconies.



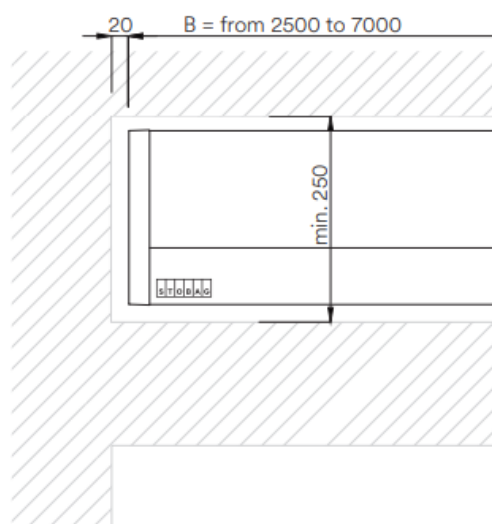
TECHNICAL DETAILS

VIVO Hide

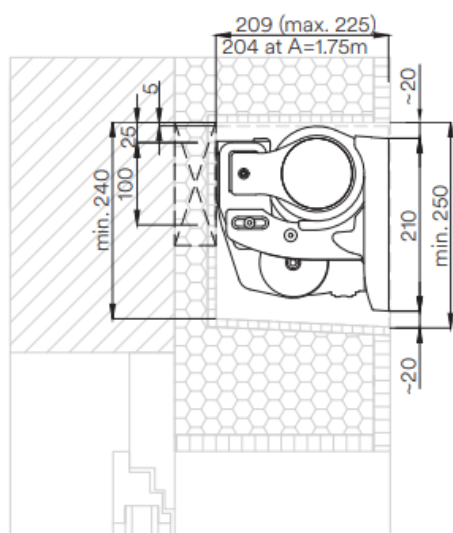
 Width 250 cm - 700 cm

 Drop 150 cm - 400 cm

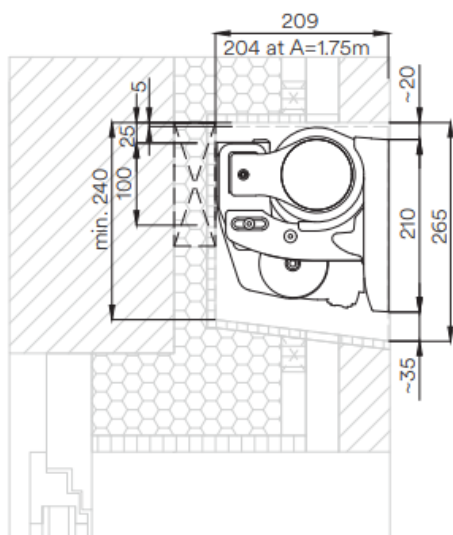
Dimensions in mm



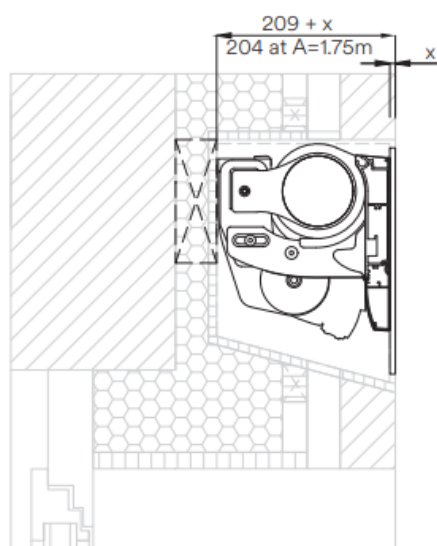
Front view



Section of an installation and recess variant, angle of inclination $0^\circ - 5^\circ$, plastered façade



Section of an installation and recess variant, angle of inclination 5° - 10° , rear-ventilated façade



Section of on-site panel installation, angle of inclination 15° - 20° , rear-ventilated façade



Our products are continuously being developed and technically optimized. For your planning, you will find all the latest CAD drawings, tender texts and other digital documents in the **architects' download area** on our website.

SURAVA Hide - VERTICAL AWNING FOR NICHES

SURAVA Hide can be installed inside the recess on the reveal, ceiling, or wall side - offering maximum flexibility for construction projects with varying installation

requirements. The fabric guide is freely selectable, whether it's a wind-stable zip guide to prevent lateral light gaps, a rod guide, or a discreet cable guide. SURAVA Hide is ideal for shading windows, loggias, and balconies.



Zip with two-part guide rail

The soffit cover allows for flush integration into the window lintel or the underside of the ceiling. It also functions as a shelf for the connection plug and cable, allowing them to be elegantly concealed.



Rod guide

The compact design and shallow recess depth (starting from 120 mm) allow for easy integration making it ideal for both new builds and renovation projects. Two installation options are available: a practical click mechanism or a solution attached to the guide rail for straightforward and efficient installation.

Note: Depending on the installation situation, the recess depth may need to be increased by 5 mm for the clip-on version.



Wire rope guide

TECHNICAL DETAILS

SURAVA Hide



Width 80 cm - 450 cm



Height with rope and pole guide 45 cm - 300 cm



Height with guide rail 45 cm - 400 cm

SURAVA Hide Zip

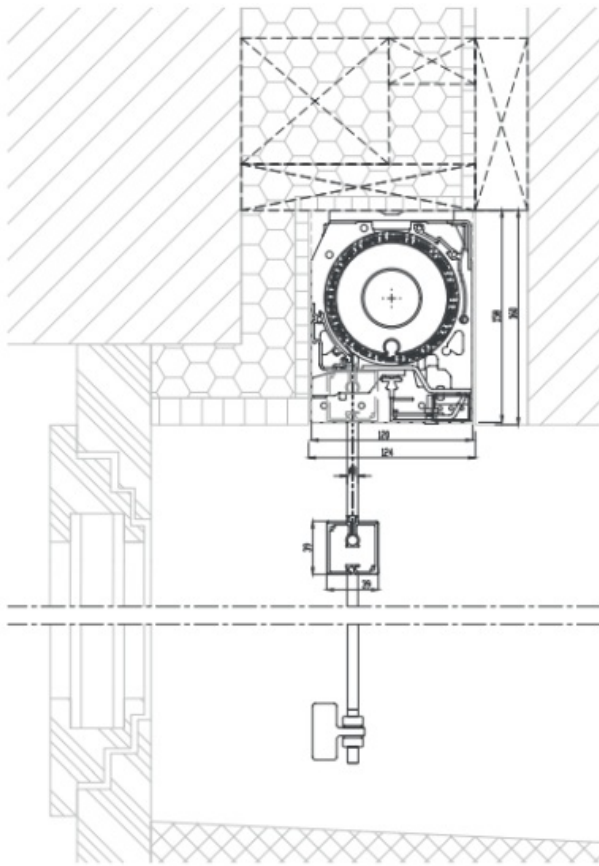


Width 67 cm - 425 cm

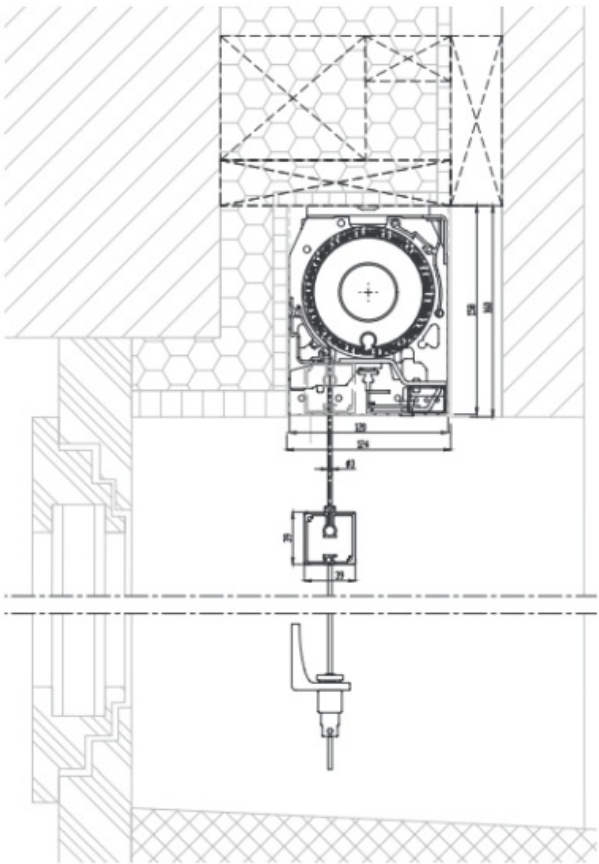


Height 45 cm - 300 cm

Dimensions in mm



Ceiling installation with rod guide, section of a recessed and niche variant



Ceiling installation with wire rope guide, section of a recessed and niche variant



Our products are continuously being developed and technically optimized. For your planning, you will find all the latest CAD drawings, tender texts and other digital documents in the **architects' download area** on our website.

Making living spaces more valuable together.

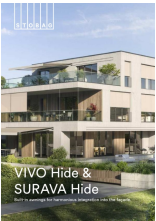


Scan the QR code for more information.

267262 - 2025-04 - © STOBAG - Subject to change without prior notification.



Documents / Resources

	STOBAG Built In Awnings For Harmonious [pdf] Instruction Manual Built In Awnings For Harmonious, Awnings For Harmonious, Harmonious
---	--

References

- [User Manual](#)

📁 Awnings For Harmonious, Built In Awnings For Harmonious, Harmonious,

📁 STOBAG STOBAG



Leave a comment

Your email address will not be published. Required fields are marked *

Comment *

Name

Email

Website

☐ Save my name, email, and website in this browser for the next time I comment.

Post Comment

Search:

e.g. whirlpool wrf535swhz

Search

[Manuals+](#) | [Upload](#) | [Deep Search](#) | [Privacy Policy](#) | [@manuals.plus](#) | [YouTube](#)

This website is an independent publication and is neither affiliated with nor endorsed by any of the trademark owners. The "Bluetooth®" word mark and logos are registered trademarks owned by Bluetooth SIG, Inc. The "Wi-Fi®" word mark and logos are registered trademarks owned by the Wi-Fi Alliance. Any use of these marks on this website does not imply any affiliation with or endorsement.