



STL Electronic Logging Device User Manual

[Home](#) » [STL](#) » STL Electronic Logging Device User Manual 

Contents

- [1 STL Electronic Logging Device](#)
- [2 Specifications](#)
- [3 How to install an ELD device](#)
- [4 Application guide](#)
- [5 Using STL ELD on the road](#)
- [6 Review ELD logs](#)
- [7 ELD Malfunctions](#)
- [8 Frequently Asked Questions](#)
- [9 Documents / Resources](#)
 - [9.1 References](#)
- [10 Related Posts](#)



STL Electronic Logging Device

5. Then get the tablet provided by Fleet and turn it on. The tablet should automatically start the application.

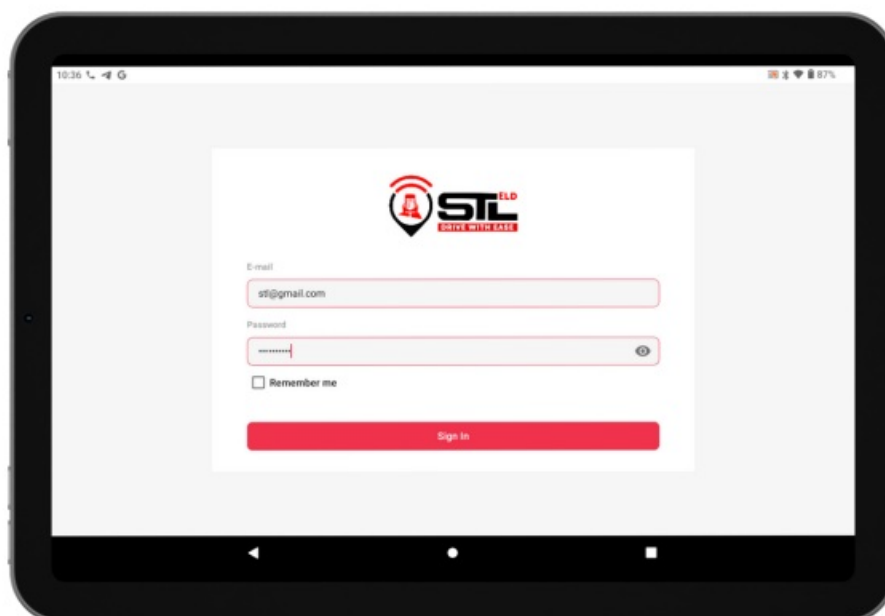


Application guide



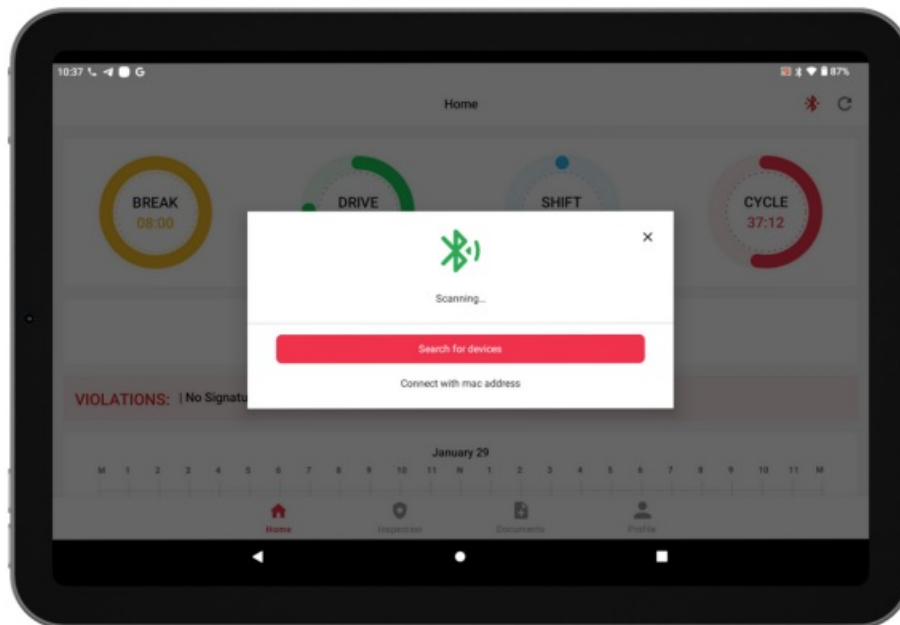
1. Log in to the application using your username and password.

If you don't have an STL ELD account, please, contact your carrier. If you don't remember your password, you can reset it by clicking "Forgot password?", or contact your carrier



2. Your tablet with the STL ELD application will automatically scan for ELD.

When you log in to your STL ELD account, the app starts scanning for available ELD devices automatically. And the ELD device lights green when it is ready to use.

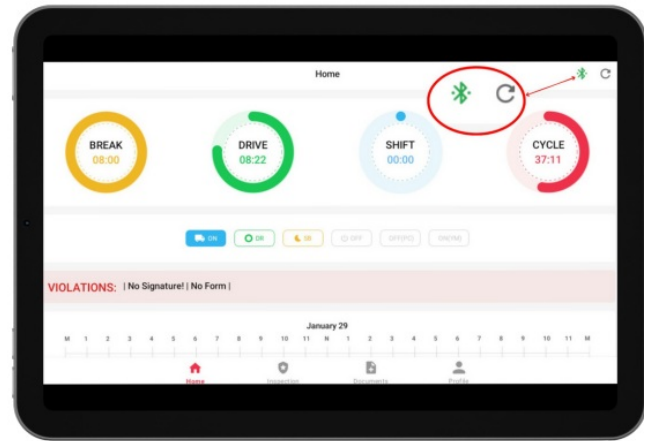
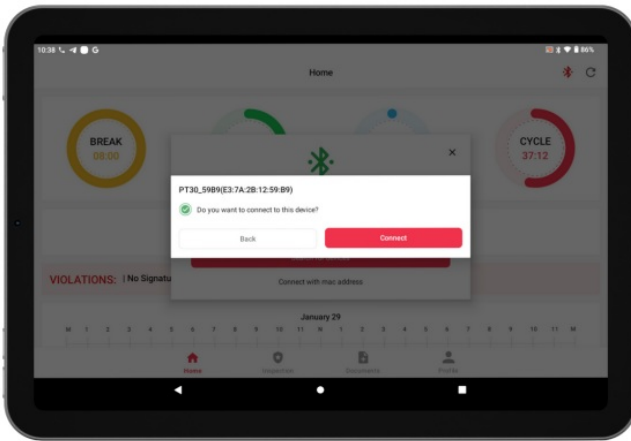


3. You should choose shown ELD

Once the scanning is complete, select your ELD device from the displayed list of results.

4. If the ELD is connected to the vehicle, you can see a green icon on the top left corner of the dashboard.

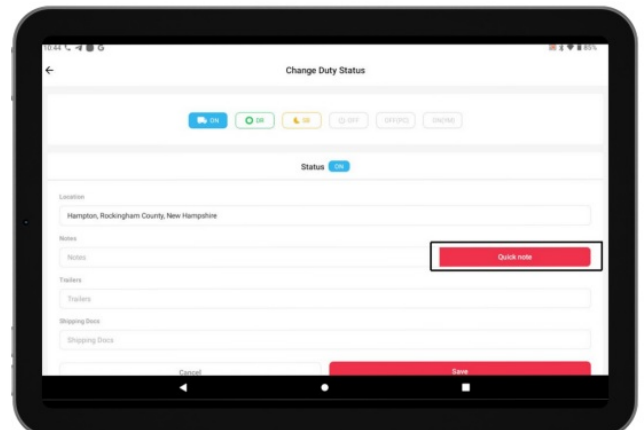
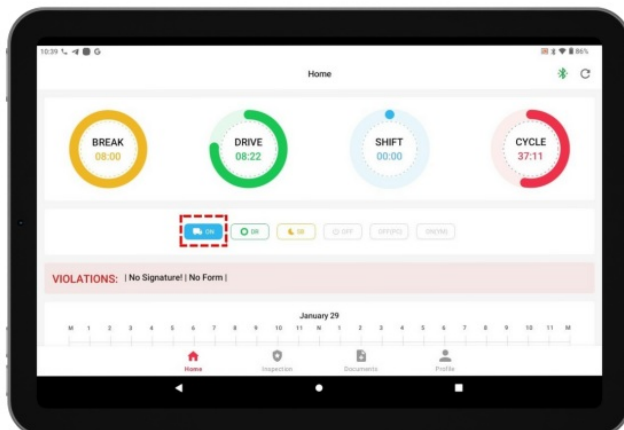
If it is not connected, the Bluetooth icon will be grey out which indicates ELD is disconnected



Using STL ELD on the road



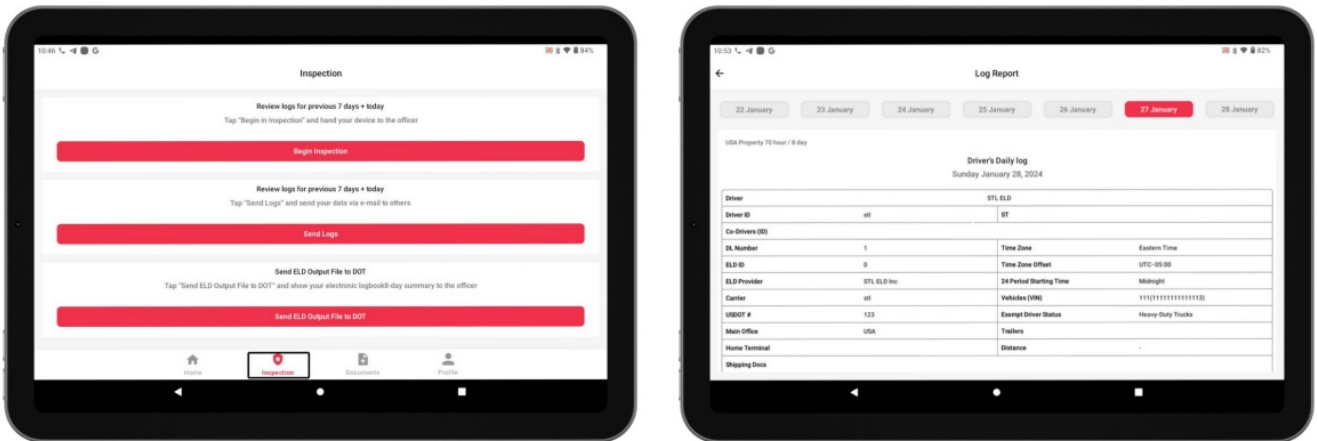
1. **Once you have connected your mobile device to ELD, your driving time is automatically recorded** your vehicle starts moving, and your duty status will be automatically set as “Dr i v i ng”. The vehicle will be on “Dr. I v I ng” and “On dut y” statuses when it reaches a speed of at least 5 mph.
2. **Choose a status in the main window based on your current situation.**
From the statuses in the main window, select “Of f Duty “, “Sleep”, or “On Duty ” depending on your situation
3. Fill out the location field and input remarks, such as “Pre-trip inspection” or “Coffee break” (if the location field is left empty, it will be automatically set).



Review ELD logs

Follow the given guidelines to show your records to the officer

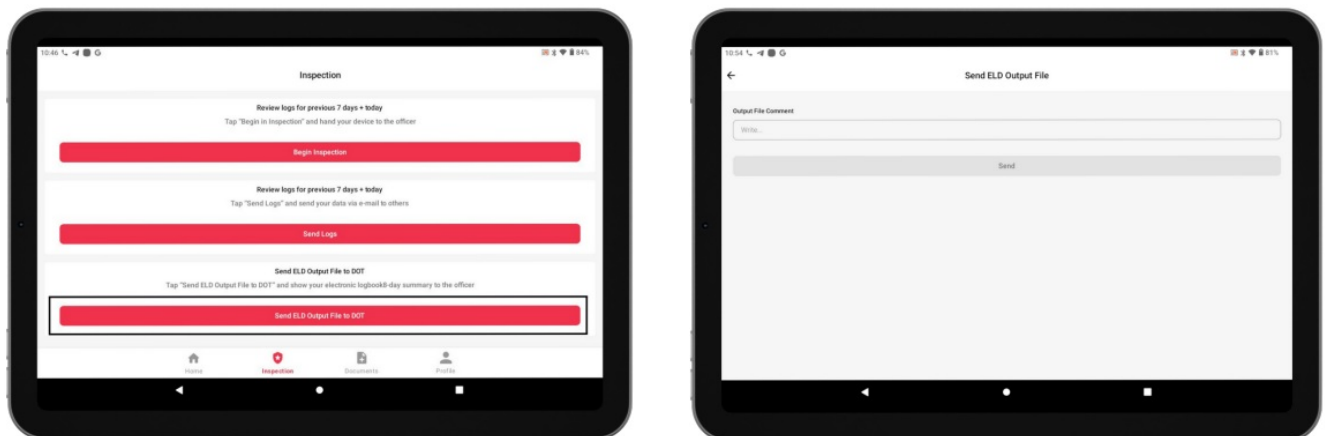
1. Tap the icon at the bottom and select "Inspection".
2. Tap "Begin inspection" and show your electronic logbook's eight-day summary to the officer.



Transfer ELD records to authorized safety officer inspection

Follow the given guidelines to show your records to the officer

1. Select "Send ELD Output File to DOT" to send your electronic logbook's data to DOT.
2. In the newly opened window, write your comment and click the "Send" button.



ELD Malfunctions



395.22 Motor carrier Responsibilities

A motor carrier must ensure that its drivers possess onboard a commercial motor vehicle and ELD information

packet containing the following items: An instruction sheet for the driver describing ELD malfunction reporting requirements and record-keeping procedures during ELD malfunctions.

The following instructions are by the guidelines outlined in 395-34

STL ELD will monitor and report malfunction data based on section “4.6 ELD’s Self-Monitoring of Required Functions”:

- **P** – Power compliance” malfunction,
- **E** – Engine synchronization compliance” malfunction,
- **T** – Timing compliance” malfunction,
- **L** – Positioning compliance” malfunction,
- **R** – Data recording compliance” malfunction,
- **S** – Data transfer compliance” malfunction,
- **O** – Other” ELD detected a malfunction.

Frequently Asked Questions

- **Q: What should I do if I forget my STL ELD account password?**
 - A: Contact your carrier for assistance in resetting your password or recovering your account details.
- **Q: How can I ensure my ELD is properly connected to my vehicle?**
 - A: Check for a green icon on the dashboard indicating a successful connection. If the Bluetooth icon is greyed out, it means the ELD is disconnected.
- **Q: Can I manually set my duty status while using STL ELD?**
 - A: No, your duty status is automatically set based on your vehicle’s movement. You can choose from pre-defined statuses like Off Duty, Sleep, or On Duty.

Documents / Resources



[STL Electronic Logging Device](#) [pdf] User Manual
Electronic Logging Device, Logging Device, Device

References

- [User Manual](#)

[Manuals+](#), [Privacy Policy](#)

This website is an independent publication and is neither affiliated with nor endorsed by any of the trademark owners. The "Bluetooth®" word mark and logos are registered trademarks owned by Bluetooth SIG, Inc. The "Wi-Fi®" word mark and logos are registered trademarks owned by the Wi-Fi Alliance. Any use of these marks on this website does not imply any affiliation with or endorsement.