



STIRLING Purifier Fan With Wi-Fi Control BF21APF User Guide

[Home](#) » [STIRLING](#) » STIRLING Purifier Fan With Wi-Fi Control BF21APF User Guide 

Contents

- [1 STIRLING Purifier Fan With Wi-Fi Control BF21APF](#)
- [2 Have you got everything?](#)
- [3 Installing the filter](#)
- [4 Controlling the fan at home](#)
- [5 Documents / Resources](#)
- [6 Related Posts](#)



STIRLING Purifier Fan With Wi-Fi Control BF21APF



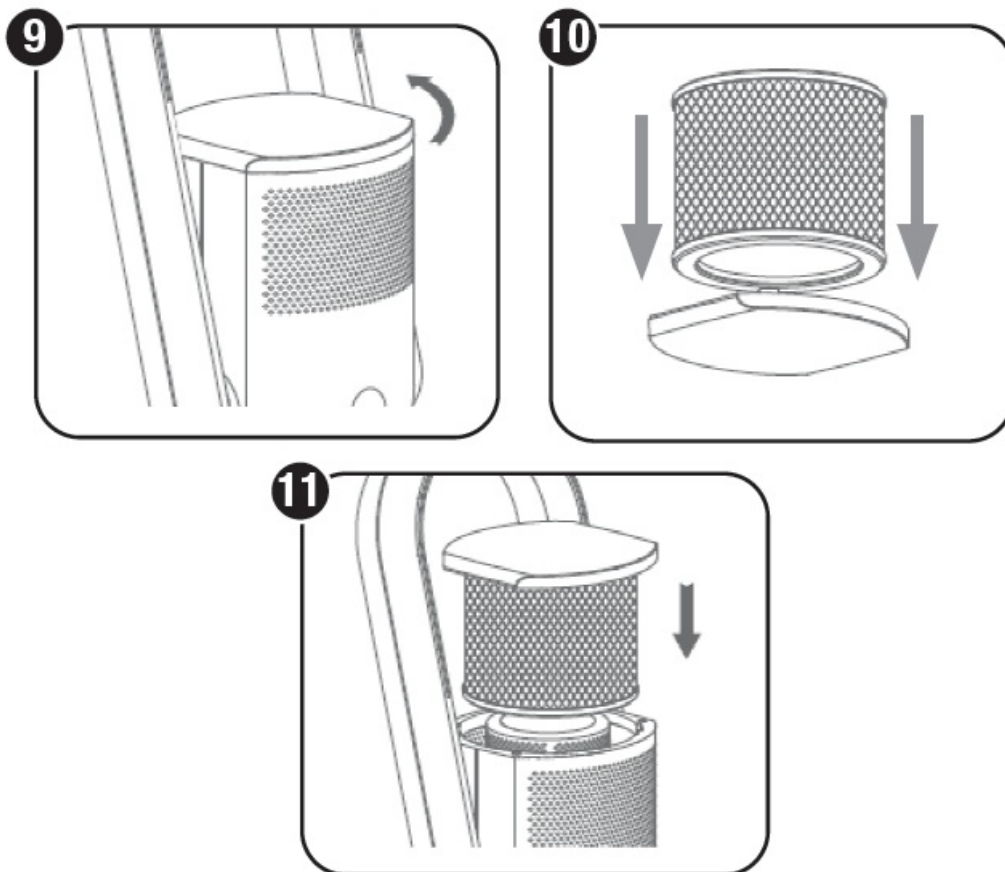
Have you got everything?



1. Your new bladeless purifier fan comes ready assembled, except for the HEPA filter.
2. The air-purifying HEPA filter is supplied separately. Before using the fan, you must install the filter into the appliance housing see the instructions below.
3. Use the supplied AC adaptor to supply power to the fan.

4. For easy operation of the fan from your home, use the supplied remote control. It contains a coin battery inside, so always keep it out of reach of children.
 5. Basic functions can also be set with the touch screen button on the fan body.
 6. Keep in mind that this quick start guide only contains basic instructions to get you started.
 7. For the full picture, please refer to the supplied instruction manual, which has comprehensive installation and usage instructions and important safety advice.
 8. Keep the warranty certificate in a safe place for future reference.
- Do not use the fan until the filter is fitted securely into the housing.

Installing the filter



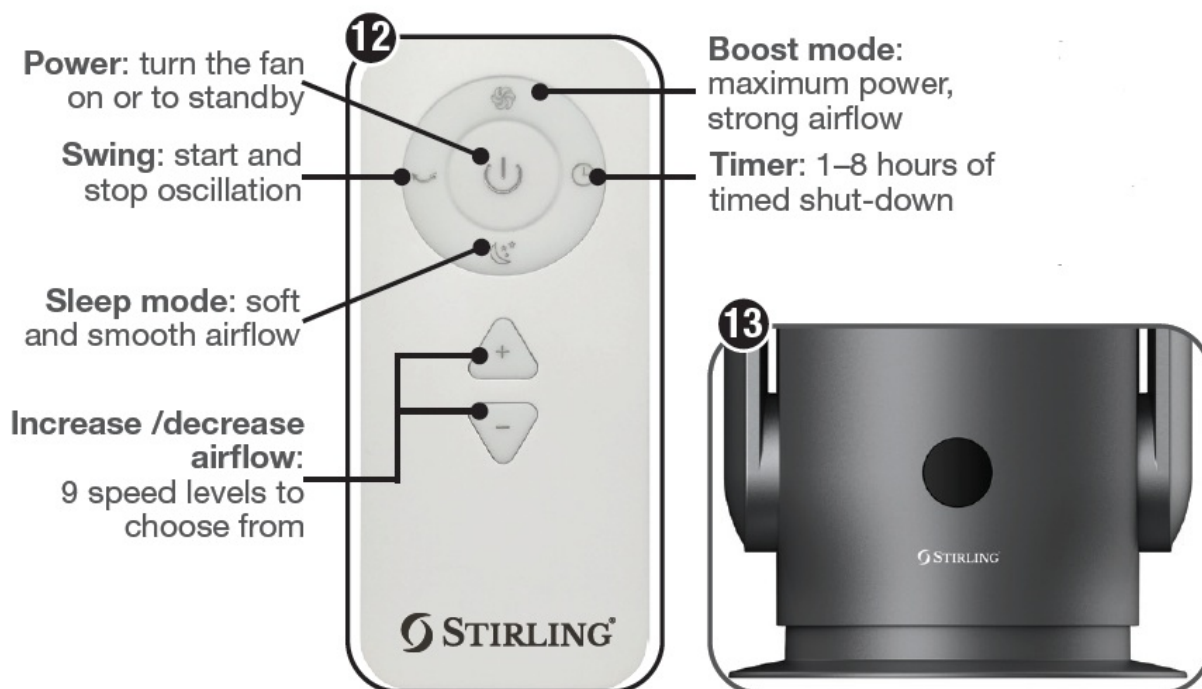
Take the filter out of the plastic bag.

- Push the wind outlet gently to the back (max. 15 degrees). Place your flat hand on the top cover, push down firmly and turn it slightly anticlockwise until it snaps open.
- Place the top cover upside down on a sturdy surface. Place the filter in the grooves and push it down firmly with both hands until you hear it click into place.
- Place the filter with the top cover into the housing. Turn it loosely until the curved edges almost line up, then press down firmly and turn clockwise until it locks securely into place.

Nearly done! For operation instructions,

Controlling the fan at home

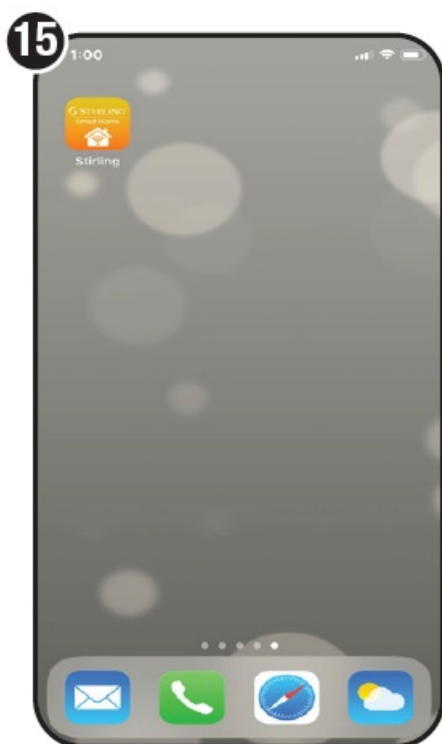
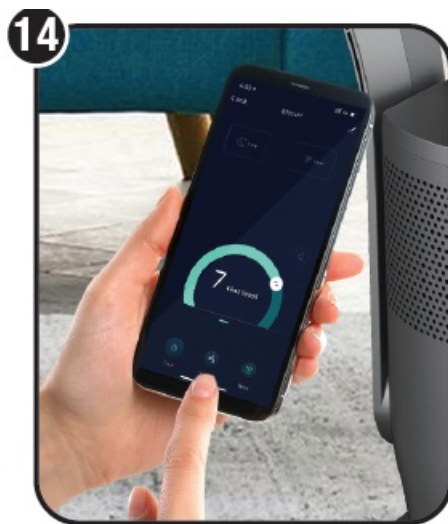
You have three options how to operate your new bladeless purifier fan:



For convenient fan operation from your home, use the remote control. You can also use the touch screen button at the front of the fan housing to switch the fan on or off and set the air volume or oscillation. The manual (page 13) has all the details for how long you have to hold the button for the various functions.

and remotely

- Because of its in-built Wi-Fi technology, you can also control the bladeless purifier fan remotely so that on your arrival at home the room temperature is comfortable.
- All you need is an Android smartphone or tablet (or an Apple iPhone or iPad), and an internet connection and Wi-Fi network router set up at your home.
- You must also have our STIRLING App installed or updated on your smartphone or mobile device. This app is available from Google Play Store or Apple App Store.



Give us a call

What? You mean this Quick Start Guide didn't have ALL the answers? The manual has more comprehensive instructions, or speak to us. Call our After Sales Support on **1300 886 649**.

Well done, you made it! Now sit back and relax ... your new bladeless purifier fan is automatically covered by a 3 year warranty.



Documents / Resources



[STIRLING Purifier Fan With Wi-Fi Control BF21APF](#) [pdf] User Guide

Purifier, Fan, Wi-Fi, Control, BF21APF, STIRLING