



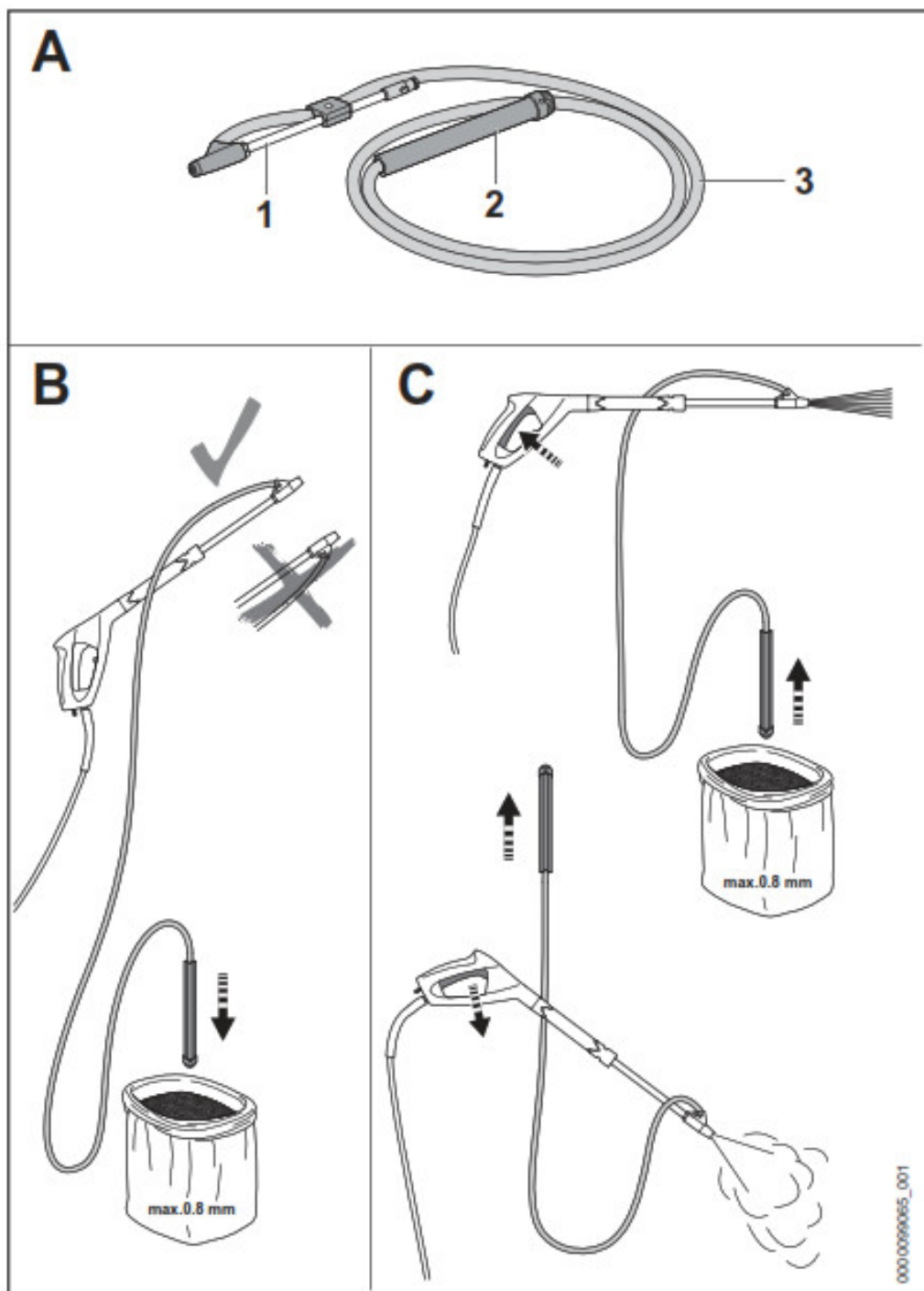
STIHL Wet Sandblasting Device Instruction Manual

[Home](#) » [STIHL](#) » STIHL Wet Sandblasting Device Instruction Manual

STIHL

Instruction Manual





Contents [[hide](#)]

[1 Guide to Using this Manual](#)

[2 Videos](#)

[3 User Information](#)

[4 Documents / Resources](#)

[5 Related Posts](#)

Guide to Using this Manual

Warning Symbols

Meanings of warning signs on the sand and wet-blasting kit:



Observe safety notices and take the necessary precautions.



Read, understand and keep the User Manual.



Wear safety glasses.

Applicable Documents

The local safety regulations apply.

► In addition to this User Manual, read, understand and keep the following documents:

- Instruction manual of STIHL pressure washer being used

Videos



stihl.com/sxbyL2



User Information

Main Parts



1. Tube
2. Suction tube
3. Hose

Safety information

The sand and wet-blasting kit is used for wet blasting of masonry and metal parts. STIHL recommends using STIHL granules or other blasting granules with a grain size of 0.8 mm for sand and wetblasting kits.

Only suitable for use with STIHL RE series pressure washers.

The pressure specification (pmax) and temperature specification (tmax) of the pressure washer must not be higher than the pressure specification and temperature specification on the accessories.

Assembling

► Fixing the sand and wet-blasting kit



Working

► Immerse the suction tube into the granules



B.

- Move the sand-wet jet evenly along the surface to be cleaned.

After finishing work

- Remove suction tube and press lever of spray gun



C.

- Lift the suction tube and press the lever of the spray gun until the granules are flushed out of the sand and wet-blasting kit



C.

Cleaning

- Clean the sand and wet-blasting kit with a damp cloth.




0457-367-0040-B

www.stihl.com

0457-367-0040-B. VA0.D21.

Documents / Resources

	<p>STIHL Wet Sandblasting Device [pdf] Instruction Manual Wet Sandblasting Device, Wet Sandblasting</p>
---	---