



**Contents** [ [hide](#) ]

- [1 Stihl MSA161T Handle Battery Chainsaw](#)
- [2 Specifications](#)
- [3 Assembly Instructions](#)
- [4 FAQs](#)
- [5 Documents / Resources](#)
  - [5.1 References](#)
- [6 Related Posts](#)



**Stihl MSA161T Handle Battery Chainsaw**



**Specifications**

Component	Material	Color
Graviton Ring	Metal	Orange

Metal Plates	Metal	Black
Screws	Metal	Black

**Overview**

This document provides a detailed guide on assembling the Graviton component. The images and descriptions will help ensure correct assembly and installation.

**Installation**

Once assembled, the Graviton component can be installed into the designated slot. Ensure that the component fits securely and is aligned properly with the existing structure.

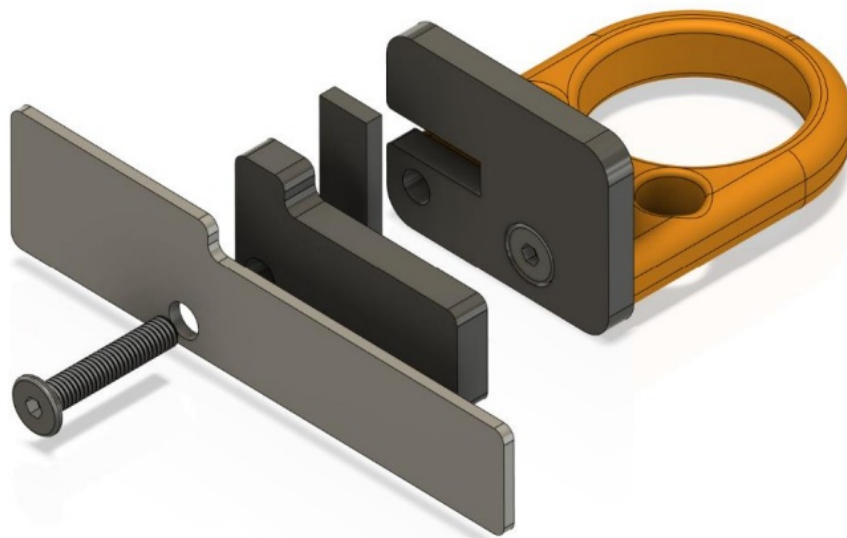
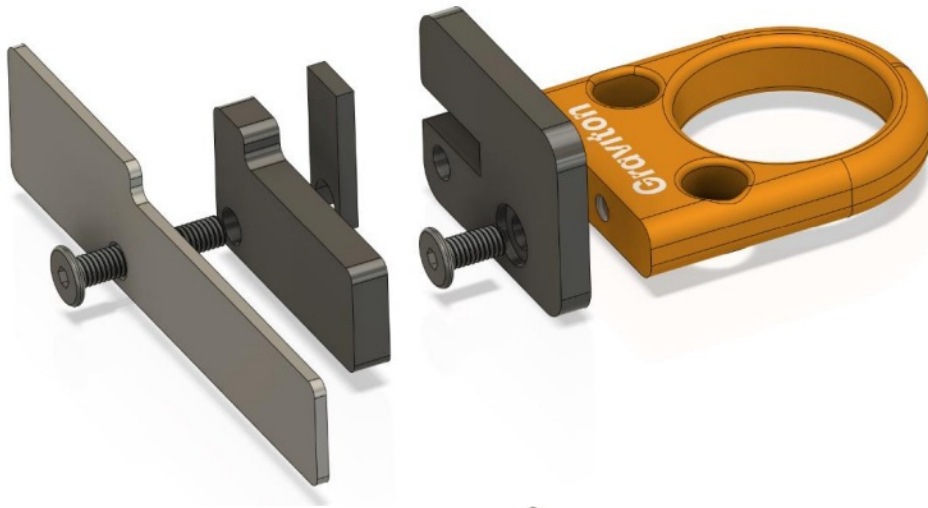
**Assembly Instructions**

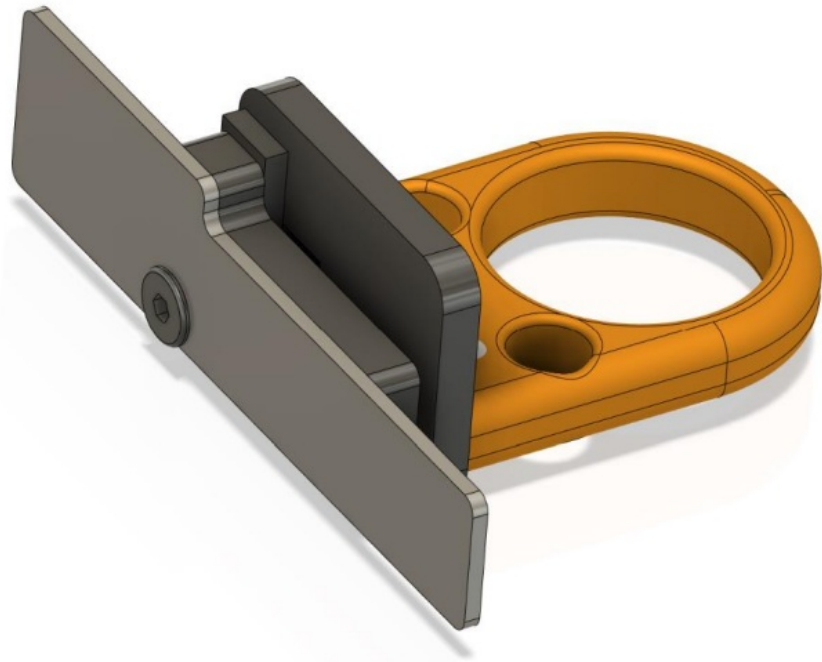
**Components**

- Orange Graviton ring with two holes
- Black metal plates
- Screws for securing components

**Step-by-Step Assembly**

1. Align the black metal plates with the holes on the orange Graviton ring.
2. Insert screws through the aligned holes to secure the plates to the ring.
3. Tighten the screws to ensure all components are firmly attached.









## FAQs

**What is the purpose of the Graviton component?**

The Graviton component is designed to securely attach to a structure, providing stability and support.

**How do I ensure the component is securely attached?**


Make sure all screws are tightened properly and the component fits snugly into its designated slot.

**Can the Graviton component be used with other systems?**

Yes, it is designed to be versatile and can be integrated with various systems,

provided they have compatible slots.

## Documents / Resources

	<p><a href="#">STIHL MSA161T Handle Battery Chainsaw [pdf]</a> Instruction Manual</p> <p>MSA161T, MSA161T Handle Battery Chainsaw, Handle Battery Chainsaw, Battery Chainsaw, Chainsaw</p>
---	--

## References

- [User Manual](#)

## Related Posts



### [26 Stihl Chainsaw Instruction Manual](#)

26 Stihl Chainsaw Instruction Manual



### [STIHL MS290 Farm Boss Chainsaw Instruction Manual](#)

STIHL MS290 Farm Boss Chainsaw Instruction Manual



### [AEG QX6 Book Handle Battery Instruction Manual](#)

AEG QX6 Book Handle Battery Instruction Manual

Accessories may vary from model to model. Instruction  
Please handle battery...



### [STIHL FS 45 Trimmer Instruction Manual](#)

STIHL FS 45 Trimmer Instruction Manual

🔍 Battery Chainsaw, Chainsaw, Handle Battery Chainsaw, MSA161T, MSA161T Handle Battery Chainsaw,

—Previous Post

**STIHL RME 339.0 Electric Mower Instruction Manual**

Next Post—

**STIHL MSA220T TC-O Top Handle Chainsaw Installation Guide**

---

## Leave a comment

Your email address will not be published. Required fields are marked \*

Comment \*

Name

Email

Website

☐ Save my name, email, and website in this browser for the next time I comment.

**Post Comment**

**Search:**

**Search**

[Manuals+](#) | [Upload](#) | [Deep Search](#) | [Privacy Policy](#) | [@manuals.plus](#) | [YouTube](#)

This website is an independent publication and is neither affiliated with nor endorsed by any of the trademark owners. The "Bluetooth®" word mark and logos are registered trademarks owned by Bluetooth SIG, Inc. The "Wi-Fi®" word mark and logos are registered trademarks owned by the Wi-Fi Alliance. Any use of these marks on this website does not imply any affiliation with or endorsement.