



**Contents** [ [hide](#) ]

- [1 STIENEN XML-Export DATA](#)
- [2 FARMCONNECT \(optional\)](#)
- [3 STIENEN AGRI AUTOMATION](#)
- [4 Create new insights](#)
- [5 BIG DATA](#)
- [6 DATA COLLECTION](#)
- [7 DATA EXCHANGE](#)
- [8 FAQ](#)
- [9 Documents / Resources](#)
  - [9.1 References](#)



## STIENEN XML-Export DATA



## FARMCONNECT (optional)

The FarmConnect farm software collects all current and historical data of all control computers on your farm, combines this data, and then presents it in clear overviews, graphs and tables. FarmConnect gives you access to your farm data. Wherever you are, you are always connected to your company so that you can intervene immediately if necessary

## STIENEN AGRI AUTOMATION

Stienen is a leading family company (1977) which has its roots in livestock farming. It is in our nature to be very close to our end users. We are a global supplier of innovative automation solutions for poultry and pig houses. Our climate solutions, automation systems, management software and the accompanying peripheral equipment are all developed and produced

### Stienen

- Manganstraat 9 – 6031 RT Nederweert
- T +31 (0)495 – 63 29 26
- E [sales@stienen.com](mailto:sales@stienen.com)
- [www.stienen.c](http://www.stienen.c)

## **Create new insights**

- Data from FarmConnect is exported to a legible file, an XML export file
- This XML export file can be provided to external parties to give them access to your house data
- External parties can convert the data into an overall overview

## **BIG DATA**

Big data refers to the vast amount and variety of digital data which is stored worldwide and made available in 'real time'.

- Volume
- Velocity
- Variety

These are the three identifying characteristics of big data. There is a vast amount of data involved in livestock farming. Every partner in the value chain collects data.

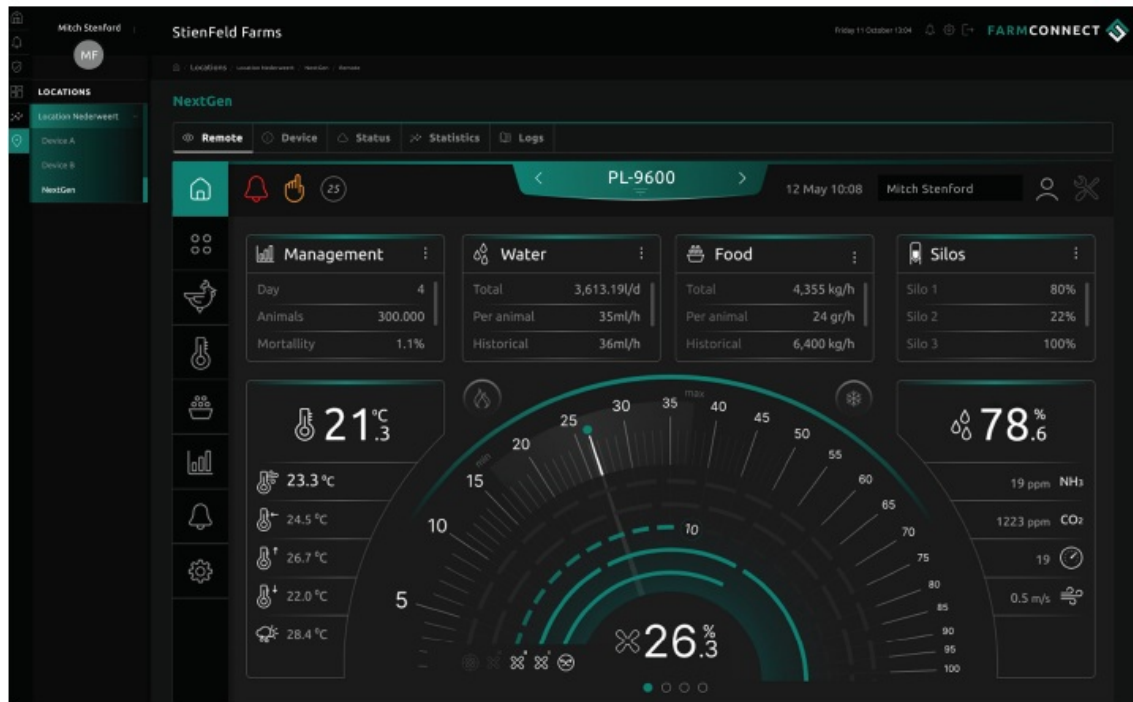
## **DATA COLLECTION**

The XML export file generated for you by Stienen using the FarmConnect data enables an external party to analyse and give you a transparent view of all your relevant farm data. These analyses will help you make better decisions and optimise your performance.

- Overall view and control of all processes
- Manage growth
- Improve results

## **DATA EXCHANGE**

Integrations are playing an ever more prominent role internationally and lead the way in more efficient integration of all processes. Data exchange is the key component for enabling added value to be created for different users, from individual entrepreneurs to integrations and links in the chain.



## VALUE CHAIN POULTRY

Feed mills, farms with parent and/or grandparent stock, hatcheries, broilers, transport companies, slaughterhouses, supermarkets and consumers. They are all links in this value chain which produce important data. Looking at the data in the entire chain as a single aggregated entity enables new insights to be gained.

## FAQ

- **What is the primary function of FarmConnect?**
  - FarmConnect collects, combines, and presents farm data for analysis and decision-making.
- **Can I access my farm data remotely with FarmConnect?**
  - Yes, FarmConnect allows you to access your farm data from anywhere for immediate intervention.
- **How can I share my farm data with external parties?**
  - You can export your farm data in XML format using FarmConnect for transparent sharing and analysis.

## Documents / Resources



## [STIENEN XML-Export DATA \[pdf\]](#) User Guide

XML-Export-L-EN25040, XML-Export DATA, XML-Export, DATA

## References

- [User Manual](#)

data, STIENEN, XML-Export, XML-Export DATA, XML-Export-L-  
STIENEN EN25040

---

## Leave a comment

Your email address will not be published. Required fields are marked \*

Comment \*

Name

Email

Website

☐ Save my name, email, and website in this browser for the next time I comment.

**Post Comment**

**Search:**

e.g. whirlpool wrf535swhz

Search

[Manuals+](#) | [Upload](#) | [Deep Search](#) | [Privacy Policy](#) | [@manuals.plus](#) | [YouTube](#)

This website is an independent publication and is neither affiliated with nor endorsed by any of the trademark owners. The "Bluetooth®" word mark and logos are registered trademarks owned by Bluetooth SIG, Inc. The "Wi-Fi®" word mark and logos are registered trademarks owned by the Wi-Fi Alliance. Any use of these marks on this website does not imply any affiliation with or endorsement.