



Contents [[hide](#)]

- [1 STI SA5500 Select Alert Mini Controllers](#)
- [2 Specifications](#)
- [3 Product Usage Instructions](#)
- [4 PRODUCT OVERVIEW](#)
- [5 FAQ](#)
- [6 Documents / Resources](#)
 - [6.1 References](#)



STI SA5500 Select Alert Mini Controllers



Specifications

- Input: 9 VDC Battery, 527 mA Max. or 12-24 VDC, 402 mA Max.

- Dimensions:
 - Length: 3.73 in. (94.6 mm)
 - Width: 3.87 in. (98.2 mm)

Product Usage Instructions

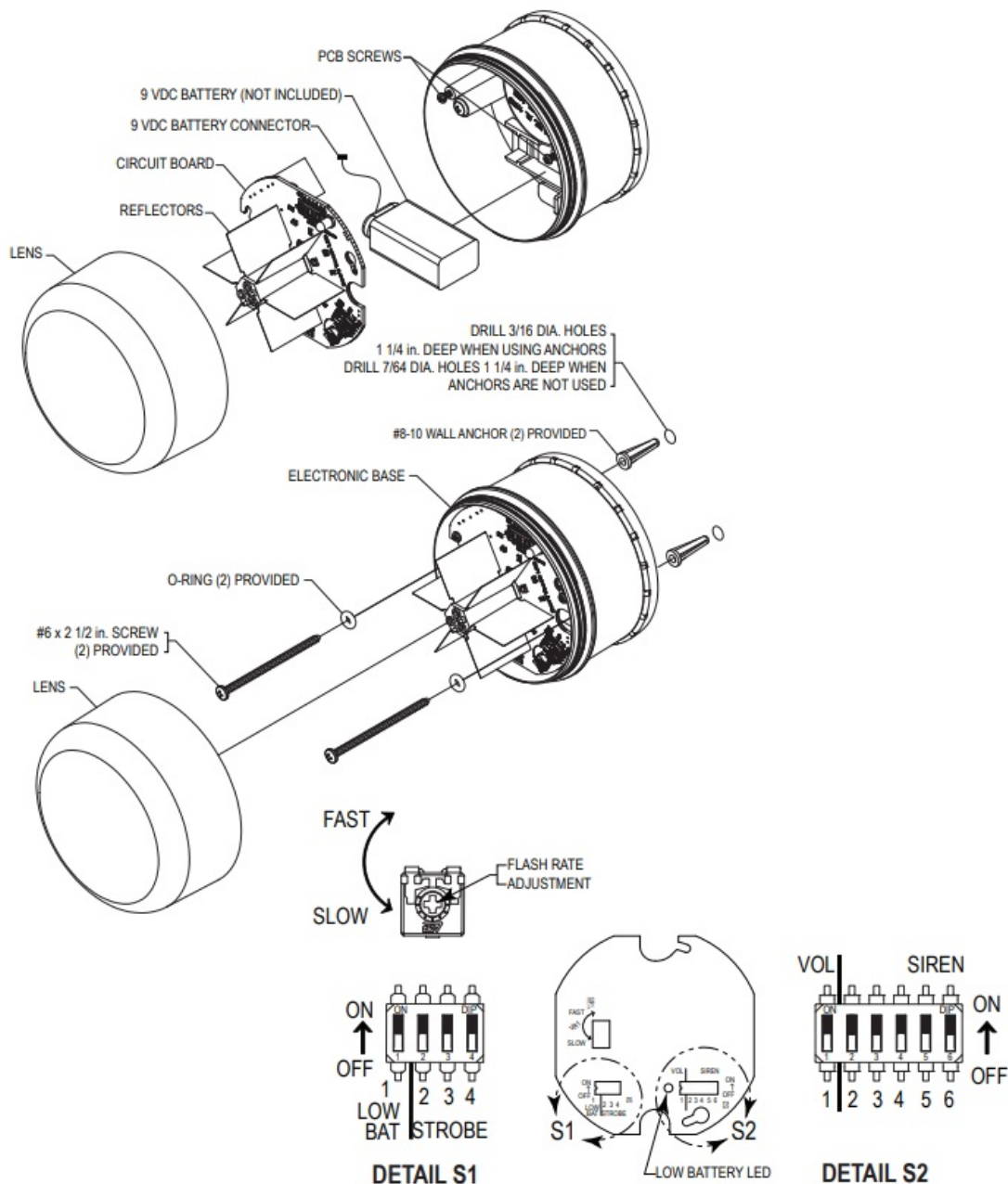
Battery Installation/Replacement:

1. Unscrew the lens to remove it.
2. Loosen the PCB screws without removing them.
3. Gently rotate the PCB without touching the LEDs or damaging the reflectors.
4. Connect the battery and slide it under the retainer.
5. Re-install the PCB and tighten the screws securely.

Low Battery Notification/Strobe Control:

Replace the battery when a low battery condition occurs. The low battery LED will flash once per minute, and the sounder will beep once every 3 minutes.

PRODUCT OVERVIEW



INPUT

9 VDC Battery, 527 mA Max.

12-24 VDC, 402 mA Max.

OPERATING TEMPERATURE

-4°F to 140°F (-20°C to 60°C)

BATTERY INSTALLATION/REPLACEMENT

1. Unscrew lens to remove.
2. Loosen PCB screws (do not remove).
3. Gently rotate PCB without touching LED's and without damaging the reflectors.
4. Connect battery and slide under the retainer.

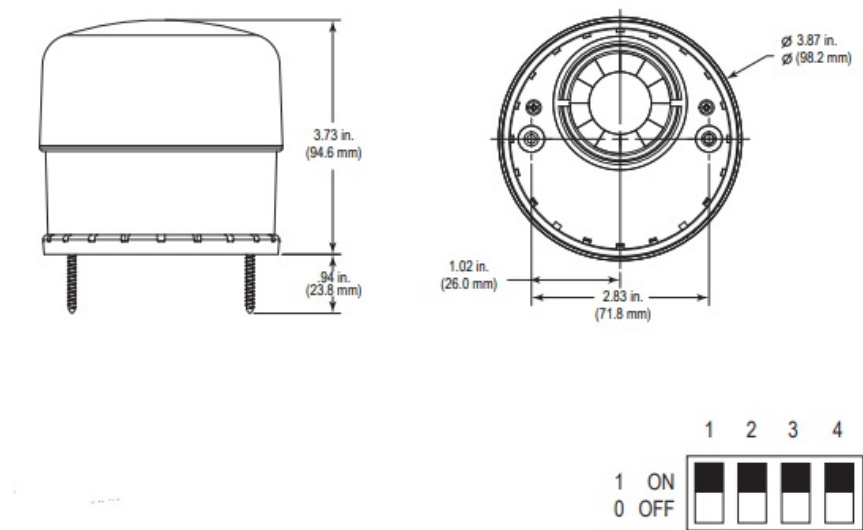
5. Reinstall the PCB and tighten the screws.

NOTES

- 1. The internal battery will provide backup power if loss of external power.
- 2. If no internal battery is used, remove all power and move S1-1 to the “OFF” position (see detail S1).

LOW BATTERY OPERATON

Replace battery when low battery condition occurs, Low battery LED flashes 1x per 1 minute and sounder beeps 1x per 3 minutes



S1 – LOW BAT. NOTIFICATION/STROBE CONTROL

| | 1 | 2 | 3 | 4 | FUNCTION |
|---|---|---|---|---|------------------------------|
| * | 1 | | | | LOW BATTERY NOTIFICATION ON |
| | 0 | | | | LOW BATTERY NOTIFICATION OFF |
| | | 0 | 0 | 0 | CONTINUOUS “ON” |
| | | 0 | 0 | 1 | DOUBLE LED ROTATION |
| | | 0 | 1 | 0 | 3 FLASH - DELAY - 3 FLASH |
| | | 0 | 1 | 1 | SINGLE LED ROTATION (FAST) |
| | | 1 | 0 | 0 | FLASHING |
| | | 1 | 0 | 1 | INTENSITY RAMPING UP & DOWN |
| | | 1 | 1 | 0 | SINGLE LED ROTATION (SLOW) |
| * | 1 | 1 | 1 | | RIGHT/LEFT ROTATION |

*Default Settings

WARNING: This product can expose you to chemicals including Dichloromethane,

which is known to the State of California to cause cancer, and Bisphenol A (BPA), which is known to the State of California to cause birth defects or other reproductive harm. For more information, go to www.P65Warnings.ca.gov. Three-year warranty or a one-year limited warranty (from date of purchase) on most products. See website for details.

Electronic warranty form at www.sti-usa.com/wc14.



EMEA

- **Control with Power Supply**

- Not supervised

- Alarm on close

- Turn off low battery notification

- **Power Supply Plus Battery**

- Supervised trigger

- Alarm on open trigger

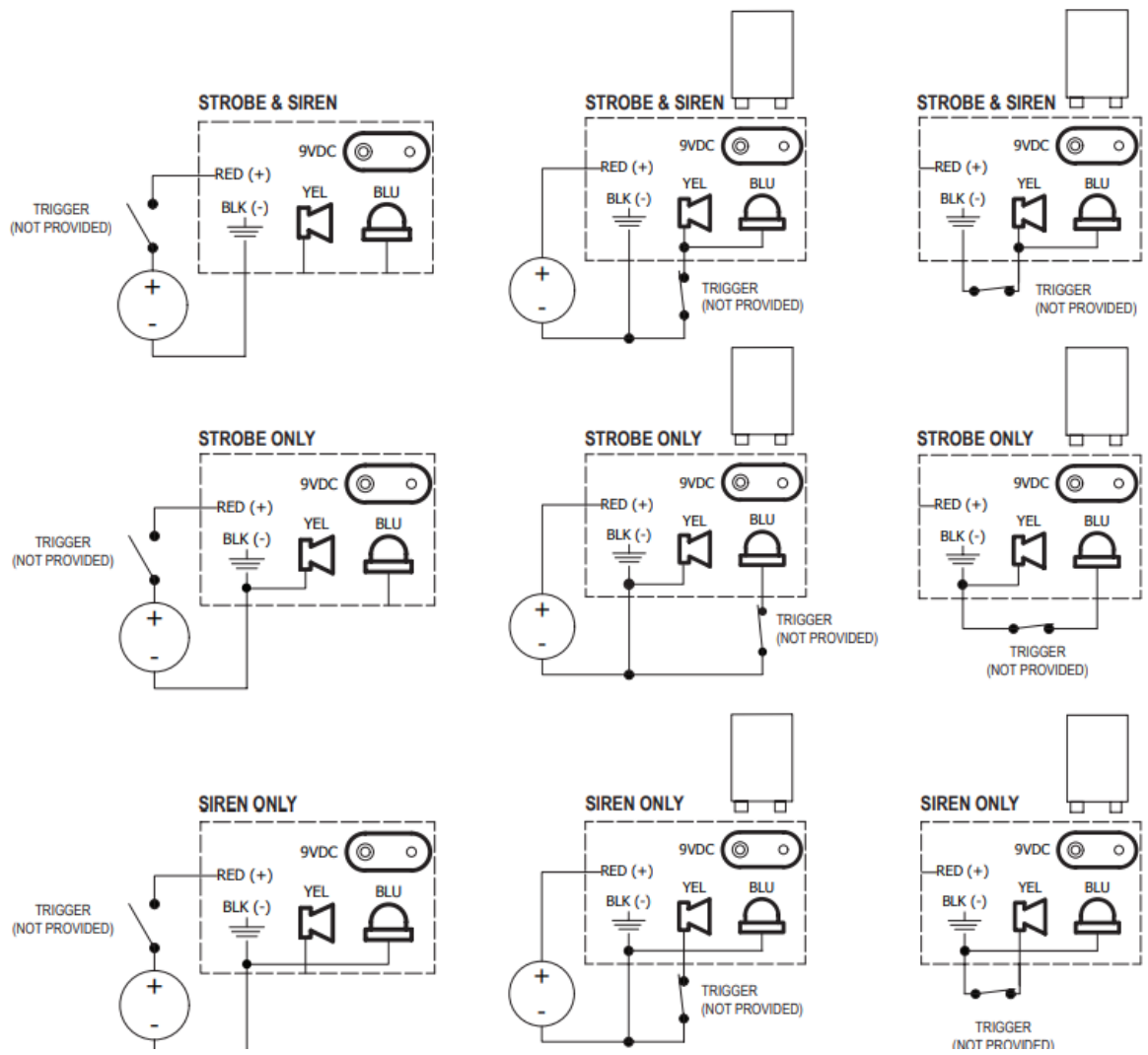
- Low battery detect on

- **Battery Only**

- Supervised trigger

- Alarm on open trigger

- Low battery detect on

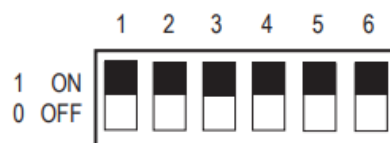


S2 VOLUME

| 1 | FUNCTION |
|-----|-------------|
| * 1 | High volume |
| 0 | Low volume |

S2 ALARM TONES

| 2 | 3 | 4 | 5 | 6 | FUNCTION |
|-----|---|---|---|---|---|
| * 1 | 1 | 1 | 1 | 1 | 1800Hz - 3300Hz @ 150ms |
| 1 | 1 | 1 | 1 | 0 | 500Hz - 1200Hz, 0.5s/0.5s OFF x 3/1.5s OFF (AS1670 EVACUATION) |
| 1 | 1 | 1 | 0 | 1 | 520Hz, 0.5s/0.5s OFF x 3/1.5s OFF (FIRE) |
| 1 | 1 | 1 | 0 | 0 | 1200Hz - 500Hz @ 1Hz (DIN 33 404) |
| 1 | 1 | 0 | 1 | 1 | 500Hz - 1200Hz, 3.75s ON/0.25s OFF (AS2220) |
| 1 | 1 | 0 | 1 | 0 | 550Hz/440Hz @ 0.5Hz |
| 1 | 1 | 0 | 0 | 1 | 970Hz, 0.5s/630Hz, 0.5s |
| 1 | 1 | 0 | 0 | 0 | 800Hz/1000Hz 0.5s each (1Hz) |
| 1 | 0 | 1 | 1 | 1 | 1500Hz - 2700Hz @ 3Hz |
| 1 | 0 | 1 | 1 | 0 | 800Hz/970Hz @ 2Hz |
| 1 | 0 | 1 | 0 | 1 | 800Hz, 0.25s ON/1s OFF |
| 1 | 0 | 1 | 0 | 0 | 2400Hz - 2900Hz @ 9 Hz |
| 1 | 0 | 0 | 1 | 1 | 750Hz |
| 1 | 0 | 0 | 1 | 0 | 970Hz |
| 1 | 0 | 0 | 0 | 1 | 970Hz, 1s OFF/1s ON |
| 1 | 0 | 0 | 0 | 0 | 500Hz - 1200Hz, 3.5s ON/0.5s OFF (NEN 2575:2000 DUTCH SLOW WHOOP) |
| 0 | 1 | 1 | 1 | 1 | 800Hz - 970Hz @ 1Hz |
| 0 | 1 | 1 | 1 | 0 | 1000-25Hz 0.5s/0.5s OFF x 3/1.5s OFF (AS1670 EVACUATION) |
| 0 | 1 | 1 | 0 | 1 | 2850Hz, 0.5s ON/0.5s OFF x 3/1.5s OFF (ISO 8201) |
| 0 | 1 | 1 | 0 | 0 | 660Hz 1.8s ON/1.8s OFF |
| 0 | 1 | 0 | 1 | 1 | 500Hz - 1200Hz @ 0.33Hz |
| 0 | 1 | 0 | 1 | 0 | 250Hz - 1200Hz @ 12Hz |
| 0 | 1 | 0 | 0 | 1 | 2400Hz |
| 0 | 1 | 0 | 0 | 0 | 800Hz - 970Hz @ 9Hz |
| 0 | 0 | 1 | 1 | 1 | 510Hz, 0.25s/610Hz, 0.25s |
| 0 | 0 | 1 | 1 | 0 | 550Hz, 0.7s/1000Hz, 0.33s |
| 0 | 0 | 1 | 0 | 1 | 660Hz 0.15s ON/0.15s OFF |
| 0 | 0 | 1 | 0 | 0 | 800Hz - 970Hz @ 3Hz |
| 0 | 0 | 0 | 1 | 1 | 420Hz 0.625s ON/0.625s OFF (AUSTRALIA AS1670 ALERT TONE) |
| 0 | 0 | 0 | 1 | 0 | 554Hz, 0.1s/440Hz, 0.4s (AFNOR NF S 32 001) |
| 0 | 0 | 0 | 0 | 1 | 970Hz, 0.5s ON/0.5s OFF x 3/1.5s OFF (ISO 8201) |
| 0 | 0 | 0 | 0 | 0 | 2400Hz - 2900Hz @ 3Hz |



- 2306 Airport Road
- Waterford • Michigan • 48327-1209
- Phone: 24803-9898
- E-mail: info@sti-usa.com • Web: www.sti-global.com
- Taylor House • 34 Sherwood Road • Bromsgrove
- Worcestershire • B60 3DR • England
- Tel: +44 (0)1527 520 999
- E-mail: info@sti-emea.com • Web: www.sti-global.com
- Unit 7A • Lockheed Avenue

- Airport Business Park
- Waterford • X91 HWF2 • Ireland
- E-mail: info@sti-emea.com

FAQ

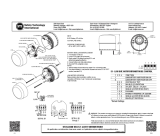
Q: What should I do if I encounter a low battery situation?

A: When the low battery condition occurs, replace the battery promptly to ensure continued functionality of the device.

Q: Can I use an external power supply with this product?



A: Yes, you can use either a 9 VDC battery or a 12-24 VDC power source with a maximum current rating of 402 mA.

Documents / Resources

| | |
|---|---|
|  | <p>STI SA5500 Select Alert Mini Controllers [pdf] Installation Guide</p> <p>SA5500, 5501, SA5500 Select Alert Mini Controllers, SA5500, Select Alert Mini Controllers, Alert Mini Controllers, Mini Controllers</p> |
|---|---|

References

- [User Manual](#)

 STI
 5501, Alert Mini Controllers, Mini Controllers, SA5500, SA5500 Select Alert Mini Controllers, Select Alert Mini Controllers, STI

Leave a comment

Your email address will not be published. Required fields are marked *

Comment *

Name

Email

Website

☐ Save my name, email, and website in this browser for the next time I comment.

Post Comment

Search:

e.g. whirlpool wrf535swhz

Search

[Manuals+](#) | [Upload](#) | [Deep Search](#) | [Privacy Policy](#) | [@manuals.plus](#) | [YouTube](#)

This website is an independent publication and is neither affiliated with nor endorsed by any of the trademark owners. The "Bluetooth®" word mark and logos are registered trademarks owned by Bluetooth SIG, Inc. The "Wi-Fi®" word mark and logos are registered trademarks owned by the Wi-Fi Alliance. Any use of these marks on this website does not imply any affiliation with or endorsement.