

**STETSOM**  
**STR04 Rgb Stetsom**  
**Bluetooth**



# STR04 Rgb Stetsom Bluetooth Instruction Manual

[Home](#) » [STETSOM](#) » STR04 Rgb Stetsom Bluetooth Instruction Manual 

## Contents

- [1 STR04 Rgb Stetsom Bluetooth](#)
- [2 Product Usage Instructions](#)
- [3 Download the app](#)
- [4 Installing the product](#)
- [5 CONNECTION OF HEADLIGHT MODULES](#)
- [6 How to connect the product to the app](#)
- [7 Restore Factory Settings](#)
- [8 Troubleshooting](#)
- [9 Technical Specifications](#)
- [10 Warranty Information](#)
- [11 Documents / Resources](#)
  - [11.1 References](#)



## STR04 Rgb Stetsom Bluetooth



## Product Usage Instructions

- We strongly recommend that the installation be carried out by qualified professionals and with the product TURNED OFF.
- The headlights should be connected in series, with one connected to the other in sequence.
- If needed, restore the product to its factory settings by pressing the power button for approximately 3 seconds. The blue and red LEDs will flash to indicate the restoration.
- If you encounter issues, contact the store where the product was purchased/installed or reach out to Customer Service at 018 2104 9412.

Thank you very much for choosing a STETSON product!

The STROBO RGB is a strobe that enhances your automotive sound experience by providing lighting effects through its LED modules. Its effects offer customizable adjustments that can be easily controlled using your Android or iOS smartphone via Bluetooth® connection.

## Download the app

Install the application by scanning the QR CODE or searching the app store on your device for “STETSON STROBO RGB”

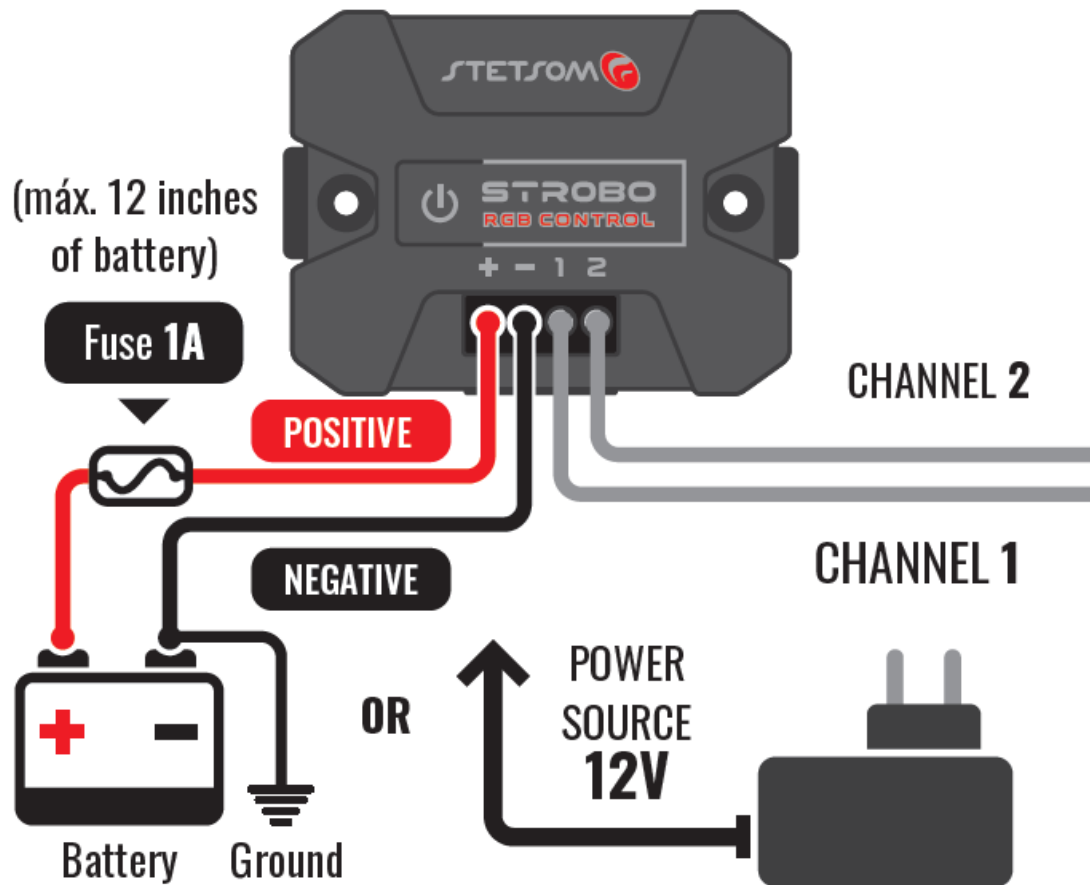
- [https://play.google.com/store/apps/details?id=br.com.stetsom.stroboRgb&pcampaignid=web\\_share](https://play.google.com/store/apps/details?id=br.com.stetsom.stroboRgb&pcampaignid=web_share)
- <https://apps.apple.com/us/app/stetsom-strobo-rgb/id6462456657>



## Installing the product

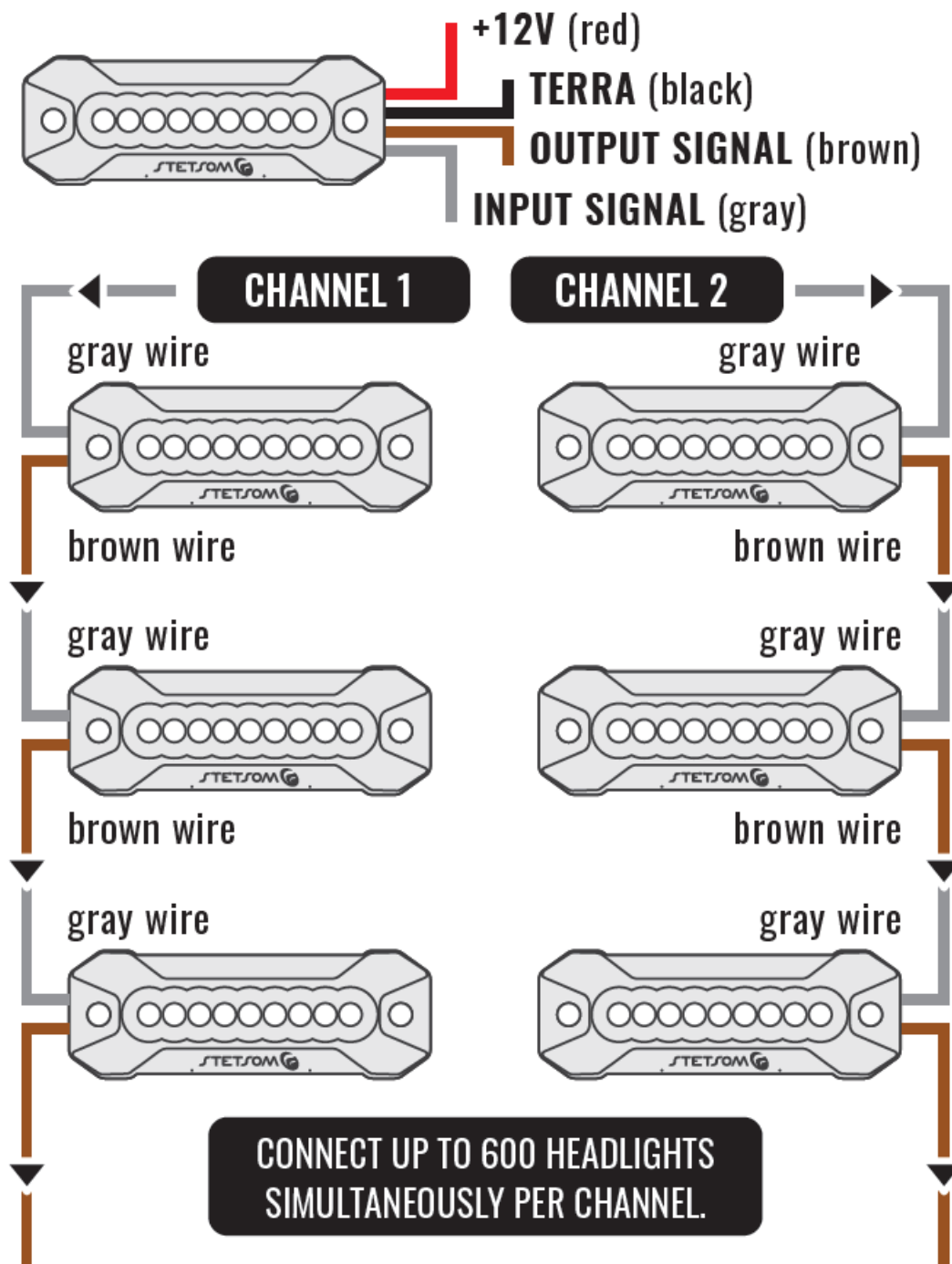
- Follow the recommended cable guidelines for proper installation:
- Central power supply: AWG 20
- Headlights power supply: AWG 13 (for up to 100 headlights in series)
- Fuse: 1A (for central unit) & 20A (for up to 100 headlights in series)

We strongly recommend that the installation be carried out by qualified professionals and with the product **TURNED OFF**.



## CONNECTION OF HEADLIGHT MODULES

- The headlights should be connected in series, with one connected to the other in sequence.

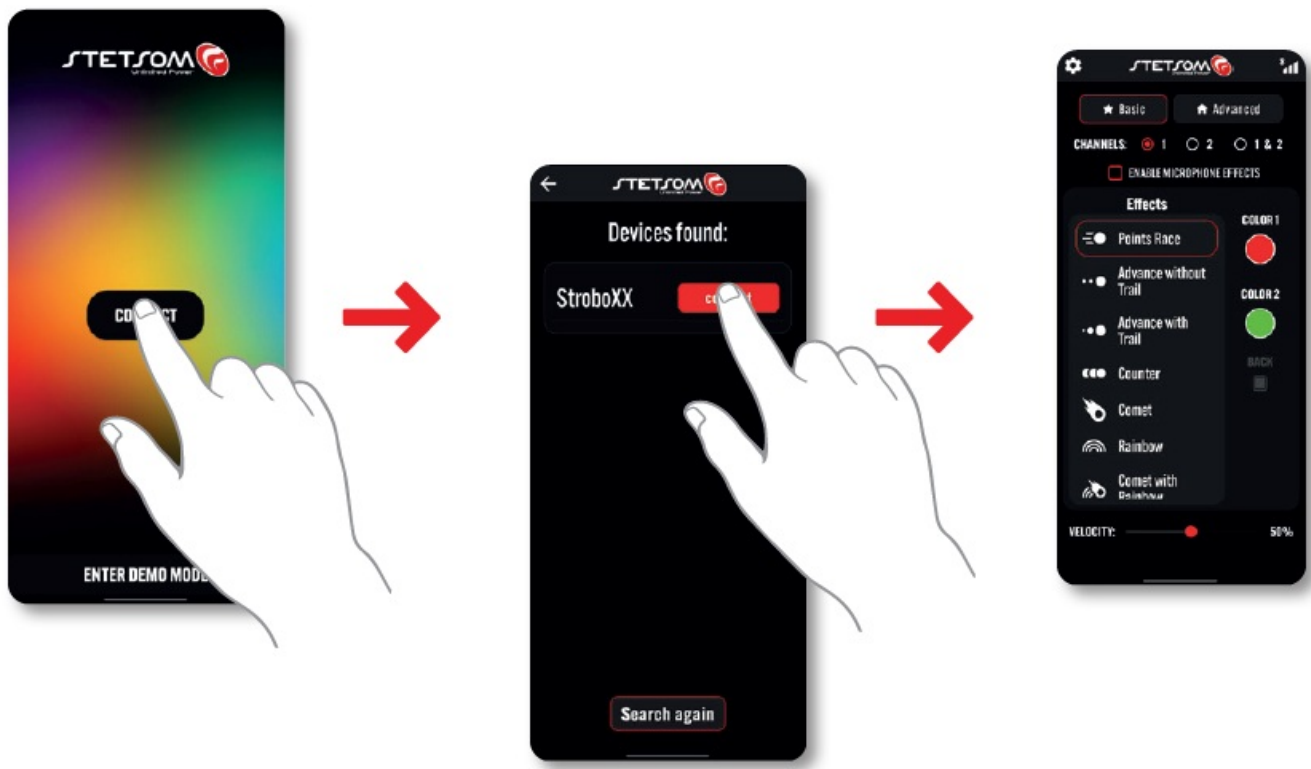


### How to connect the product to the app

With the app installed and the product turned on, open the app on your phone to perform the pairing and connection:

It's necessary to accept all the permissions requested by the app for it to work correctly.

1. On the app's home screen, click on CONNECT
2. The list will show the available devices for connection, click on the CONNECT button.
3. Once paired, the connection will be automatic, and your product will be ready to be used!



The default pairing password 1234.  
If you have any doubts, refer to the next page.

## Restore Factory Settings

- If you've made changes and forgotten the password or are experiencing any issues with its functionality, restore to its factory settings:
- POWER UP THE PRODUCT BY PRESSING THE POWER BUTTON FOR APPROXIMATELY 3 SECONDS (THE BLUE AND RED LEDS WILL FLASH, INDICATING THAT THE PRODUCT HAS BEEN RESTORED).

## Troubleshooting

### THE PRODUCT DOES NOT TURN ON OR LED DOES NOT LIGHT UP

- Check if the cables and connections are properly connected;
- Verify if the fuses are not disconnected or burnt, and if they are compatible with the equipment's power consumption;
- Confirm if the battery charge is sufficient for its operation.

### CONNECTION OR PAIRING ISSUES

- Ensure that all permissions requested by the app have been allowed to complete the pairing with the product;
- Check if the product is within the range area (up to 32ft);
- Attempt to restart the product (turn it off for 10s and turn it on again);
- Verify if there are updates or reinstall the app;

### INCORRECT LIGHTING COLOR PATTERNS:

- Check in the app settings if the number of connected headlights matches the ones defined in the menu. This setting does not apply to LED strips.
- Adjust the colors using “Color compatibility”.

For further inquiries, please get in touch with the store where the product was purchased/installed. Alternatively, you can contact us through our Customer Service at: 018 2104 9412.

## Technical Specifications

### STROBO CENTRAL

- **Operating voltage:** 6V ~ 15V DC
- **Consumption:** 16mA (max)
- **Maximum quantity of headlights:** 1.200 (channel 1 + 2)
- **Addressing system:** 2811
- **Dimensions:** 0.7” x 2.82” x 2.09”
- **Weight:** 0.7 lb

### HEADLIGHT MODULE (UNIT)

- **Operating voltage:** 10,5V ~ 15V DC
- **Consumption:** 175mA (máx)
- **Light intensity:** 300 lux (to 0.02”)
- **Addressing system:** 2811
- **Dimensions:** 0.65” x 1.10” x 3.11”
- **Weight:** 0.5 lb

## Warranty Information

A STETSOM, through its network of Authorized Technical Assistance Providers, guarantees technical assistance to the purchaser of their products. The repairs of any defects duly established as being of the manufacturer will be done without cost for replacement components or parts and repair labor. The repairs will be done by the Authorized Technical Assistance Provider specially designated by STETSOM.

CONSULT THE LIST OF AUTHORIZED TECHNICAL ASSISTANCE PROVIDERS ON OUR WEBSITE:

[www.stetsom.com.br/pt/assistencias-tecnica](http://www.stetsom.com.br/pt/assistencias-tecnica)

If you do not locate technical assistance in your city, please contact us at: tel :+551821049412

### WARRANTY TERM CONDITIONS:

Our warranty is 12 (twelve) months against manufacturing defects. Its validity starts on the date of the Sale to the FINAL Consumer. To make use of the benefits of this warranty, you must present one of the following documents: the Final Consumer's SALE NOTE or this completed CERTIFICATE.

### CASES THAT VOID THE WARRANTY:

1. 1 year after the issuance of the invoice of sale to the consumer OR 1 year of completing certificate of warranty (dated and stamped by the retailer or installer) OR 1 year from date of manufacture.

2. Violation of seals, alteration or removal of the product's serial or lot number.
3. If the product suffers misuse, careless accidents involving: Water, Fire or Fall, or is installed in conditions contrary to the guidelines contained in the installation manual that accompanies the product.
4. Damages and changes in the circuit or adaptation of non-original parts.
5. If you use installation techniques contrary to those given in the manual.

## QUESTIONS AND ADVICE:

- STETSON offers Customer Services to answer questions and give advice about their products and services.
- Phone:: BR +55 18 2104-9412 / Site: [www.stetsom.com.br](http://www.stetsom.com.br)
- E-mail: [suporte@stetsom.com.br](mailto:suporte@stetsom.com.br)

Any updates made to this manual will be made available to the consumer free of charge on the brand's website. It is recommended that the updated manual be consulted whenever necessary.

## Documents / Resources

	<b><a href="#">STETSOM STR04 Rgb Stetsom Bluetooth</a></b> [pdf] Instruction Manual STR04, 2811, STR04 Rgb Stetsom Bluetooth, STR04, Rgb Stetsom Bluetooth, Stetsom Blueto oth, Bluetooth
---	---

## References

-  [Stetsom - Stetsom](#)
-  [Assistências TécnicaTechnical AssistanceAsistencias Técnica - Stetsom](#)
- [User Manual](#)

### Manuals+, Privacy Policy

This website is an independent publication and is neither affiliated with nor endorsed by any of the trademark owners. The "Bluetooth®" word mark and logos are registered trademarks owned by Bluetooth SIG, Inc. The "Wi-Fi®" word mark and logos are registered trademarks owned by the Wi-Fi Alliance. Any use of these marks on this website does not imply any affiliation with or endorsement.