



## Step2 4154 Mobile Helper Instruction Manual

[Home](#) » [Step2](#) » Step2 4154 Mobile Helper Instruction Manual 

### Contents

- [1 Step2 4154 Mobile Helper](#)
- [2 Product Information](#)
- [3 Product Usage Instructions](#)
- [4 CLEANING INSTRUCTIONS](#)
- [5 OPERATION INSTRUCTIONS](#)
- [6 REQUIRED](#)
- [7 Documents / Resources](#)
  - [7.1 References](#)
- [8 Related Posts](#)



**Step2 4154 Mobile Helper**



## Product Information

The Mobile Helper™ is a product designed for children between the ages of 1.5 to 5 years. It is manufactured by The Step2 Company, LLC, located at 10010 Aurora-Hudson Rd. Streetsboro, OH 44241 USA. The product comes with a warning that it contains small parts and sharp points before assembly, and adult assembly is required. The product can result in serious injury or death if falls to a hard surface. The product has no holes, and screws form their own threads. The product should be inspected before each use, and connections should be tightly secured. Damaged or worn components should be replaced by contacting The Step2 Company for replacement parts. Disposal must be in compliance with all government regulations.

## Product Usage Instructions

1. Before assembling the product, inspect all components and ensure that no parts are damaged or worn.
2. Use the screws provided to assemble the product. Apply pressure while screwing the parts together, but do not over-tighten the screws as they will not hold the parts together appropriately.
3. Use the palm of your hand and firmly apply force at the center of (C) using a slapping motion until (C) is seated properly.
4. To remove (C), grip both sides of (C) while applying pressure with thumbs against (A) as pictured.
5. After each use, inspect the product and ensure that all connections are tightly secured. Replace any damaged or worn components by contacting The Step2 Company for replacement parts.

INTENDED FOR USE BY CHILDREN FROM AGES 1.5 – 5 YEARS.  
OBSERVE ALL STATEMENTS AND WARNINGS TO REDUCE THE LIKELIHOOD OF SERIOUS OR FATAL INJURY.  
SAVE THIS SHEET FOR FUTURE REFERENCE.

**WARNING:**  
**TO AVOID SERIOUS INJURY:**

- Continuous adult supervision required. Do Not leave children unattended.
- Use on level surface. Do not use on or near stairs.
- Keep away from pools or other bodies of water.
- Do not use on wet floor or when product is wet.
- Allow only one child on tower at a time.
- Do not allow child to over extend reach.
- Do not allow child to push away from counter or table top.
- Child should stand in the center of platform.

**WARNING: CHOKING HAZARD**

Small parts & sharp points present before assembly. Adult assembly required.

**WARNING: SERIOUS HEAD INJURY OR DEATH CAN OCCUR.**

Falls to a hard surface can result in serious injury or death.

**CLEANING INSTRUCTIONS**

**General Cleaning:**

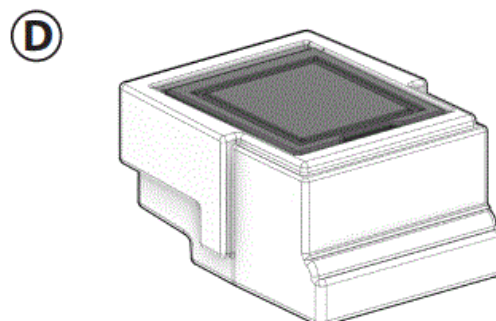
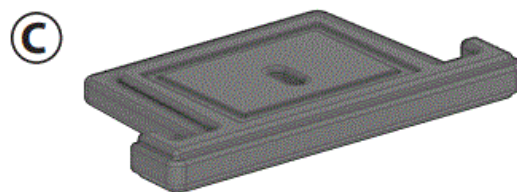
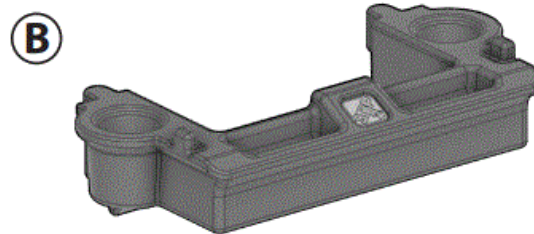
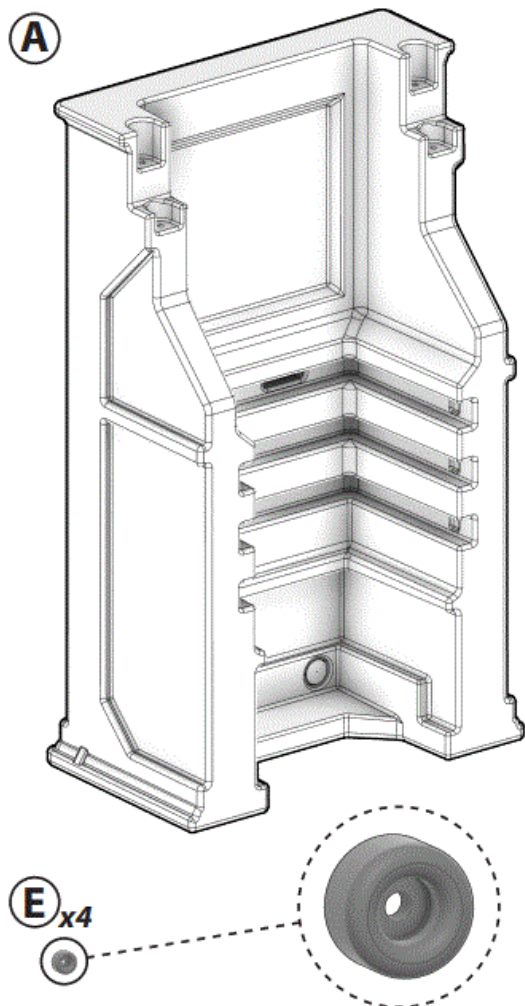
Use a 50/50 mixture of white vinegar and water.

**DISPOSAL INSTRUCTIONS:** Disassemble so that no unreasonable hazards exist. Please recycle when possible. Disposal must be in compliance with all government regulations.

**OPERATION INSTRUCTIONS**

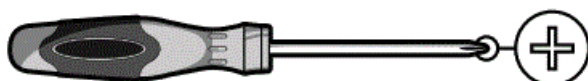
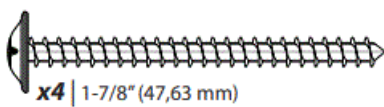
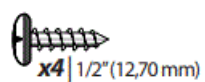
- Provide adult supervision at all times.
- Limit: 1 child. Maximum user weight: 50 lbs (22,7 kg).
- Never allow children to use the equipment in a manner other than intended.
- DO NOT remove any screws once installed. For disassembly, only remove parts not secured by screws.
- DO NOT over-tighten screws or they will not hold parts together appropriately.
- Take notice that screws are designed to pierce the plastic and form their own threads.

INSPECT THIS PRODUCT BEFORE EACH USE. TIGHTLY SECURE CONNECTIONS AND REPLACE DAMAGED OR WORN COMPONENTS. CONTACT THE STEP2 COMPANY FOR REPLACEMENT PARTS.



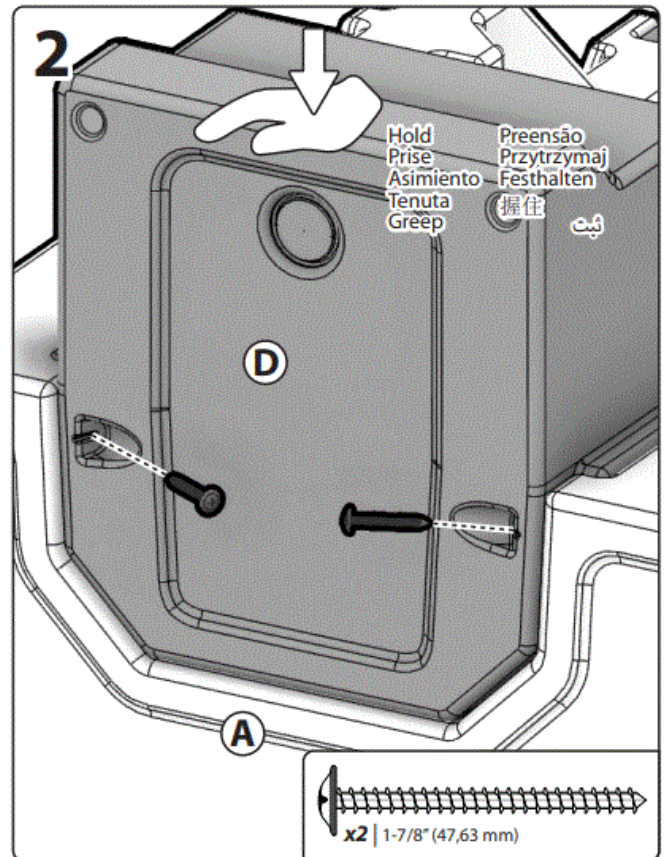
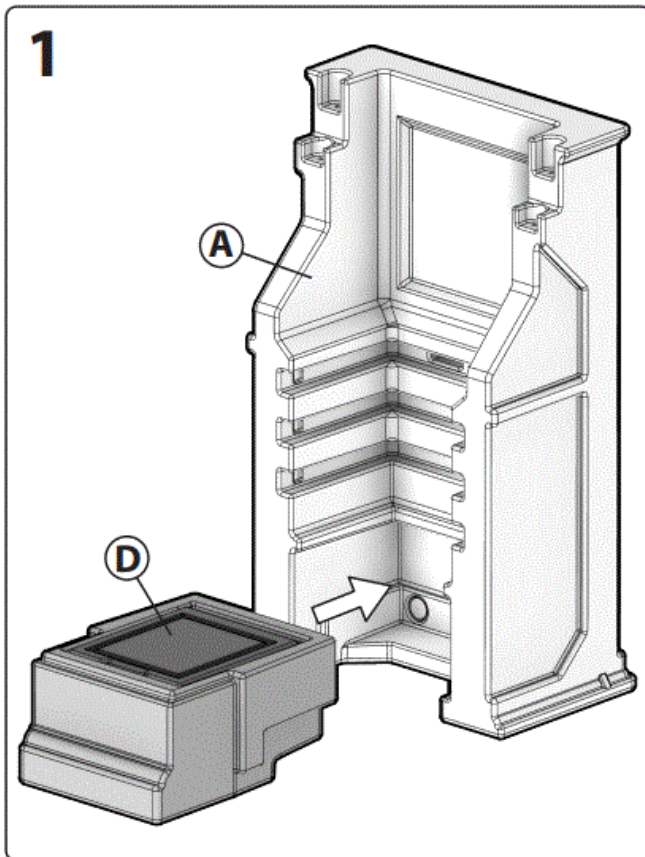
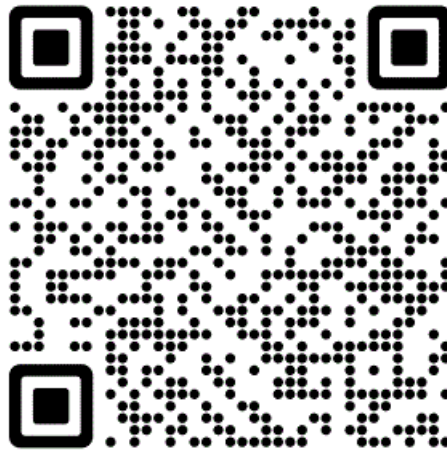
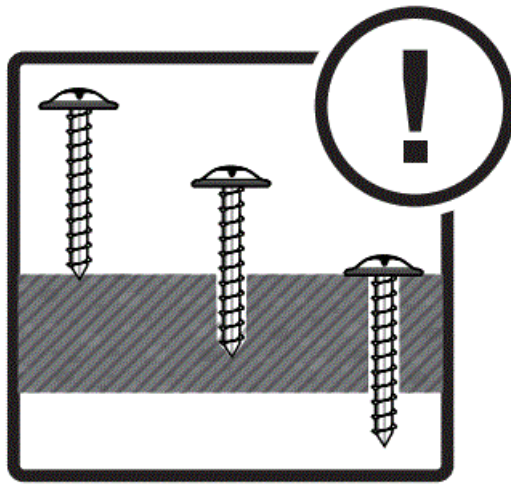
## REQUIRED

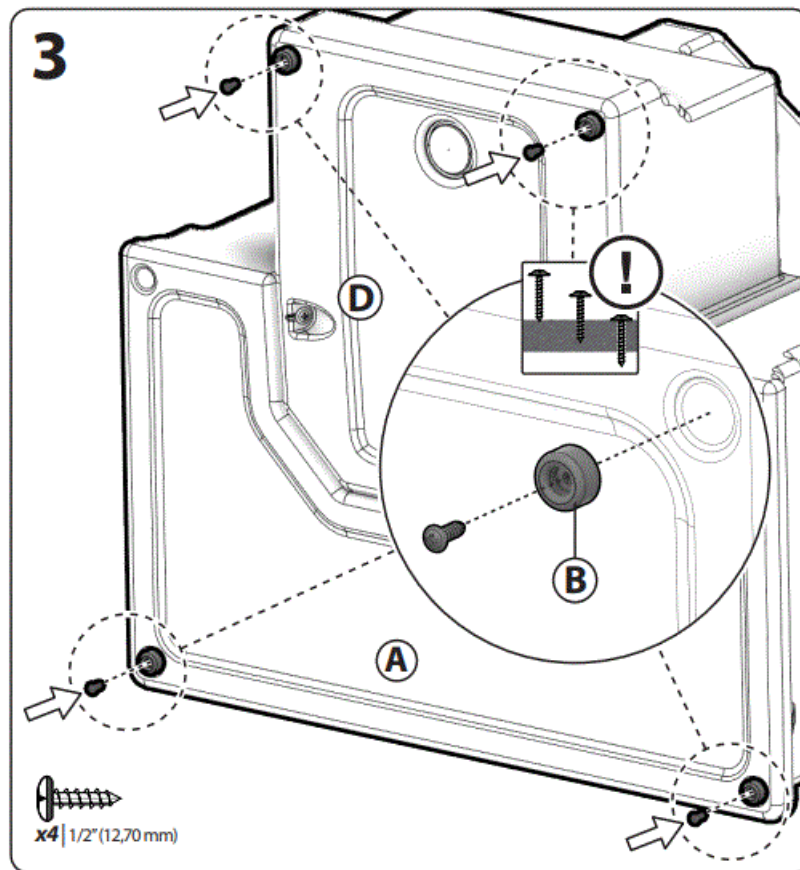
(Not Included)



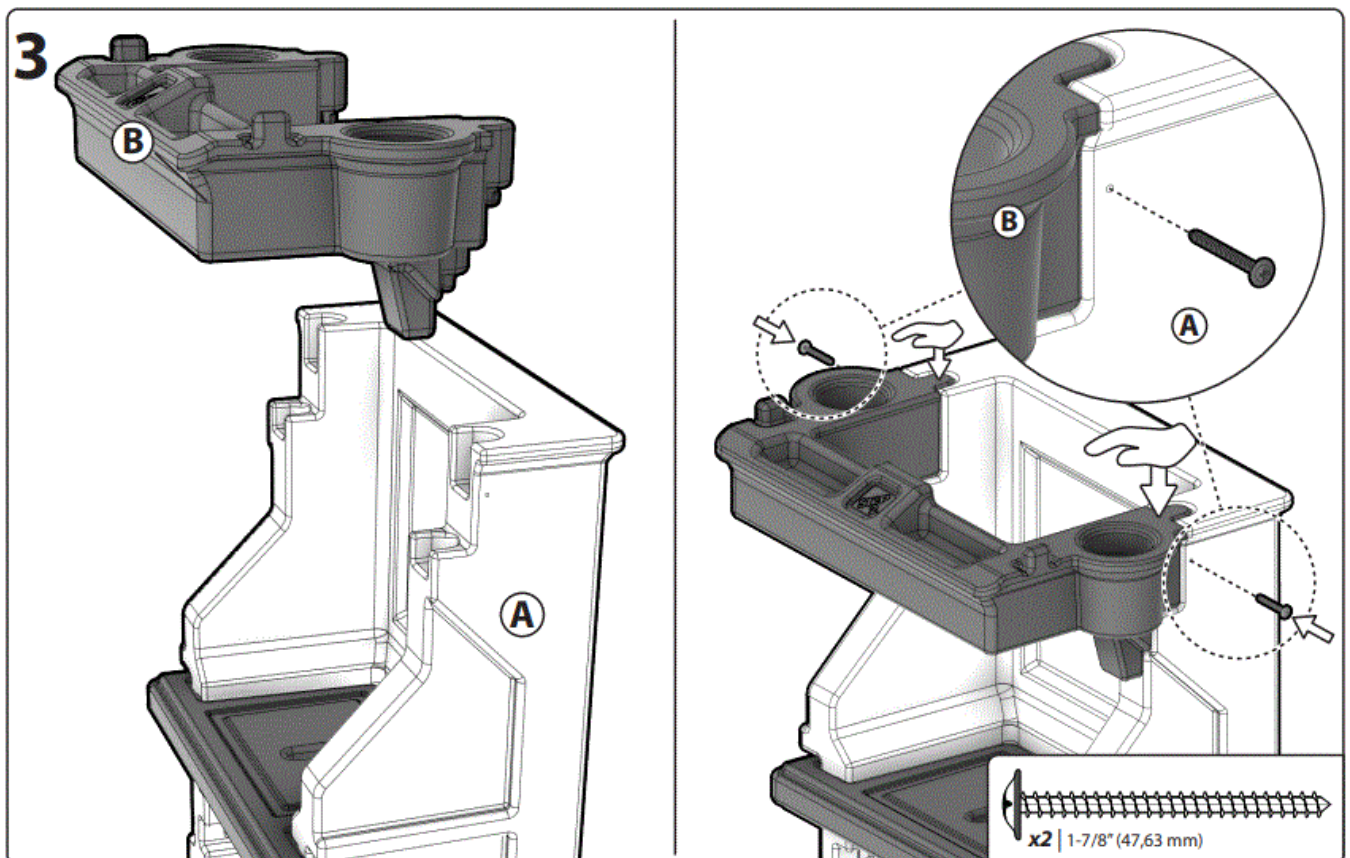
**PLEASE NOTE:** Product has no holes. Screws form their own. Apply pressure.  
**DO NOT** over-tighten screws or they will not hold parts together appropriately.



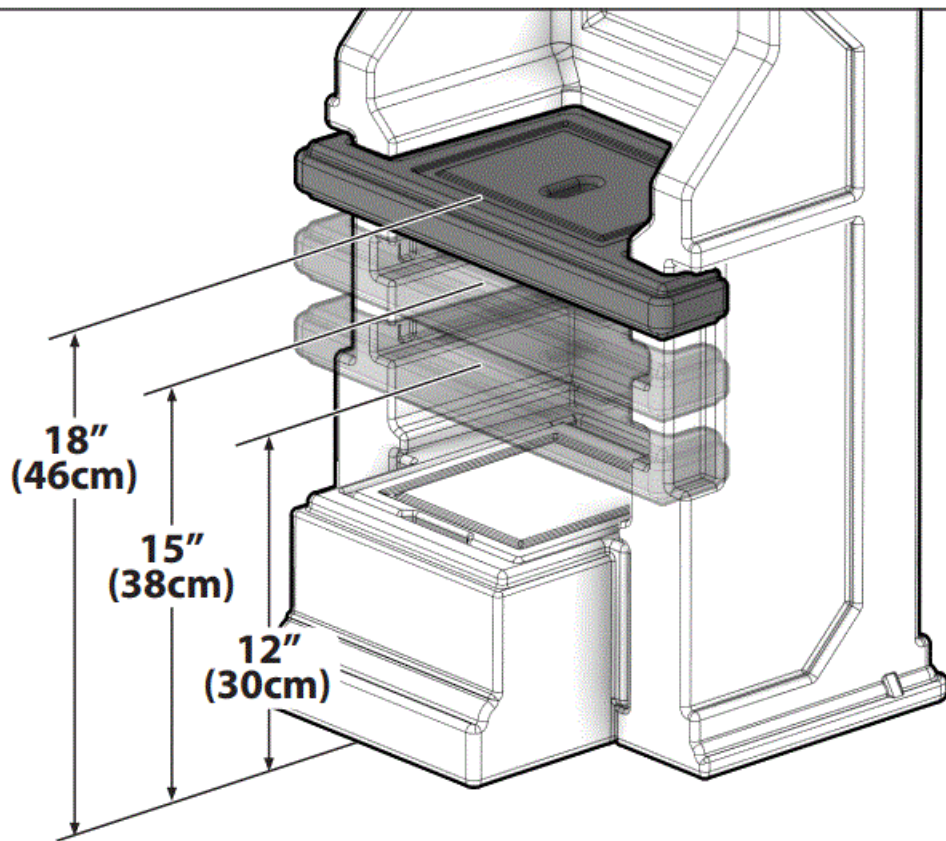




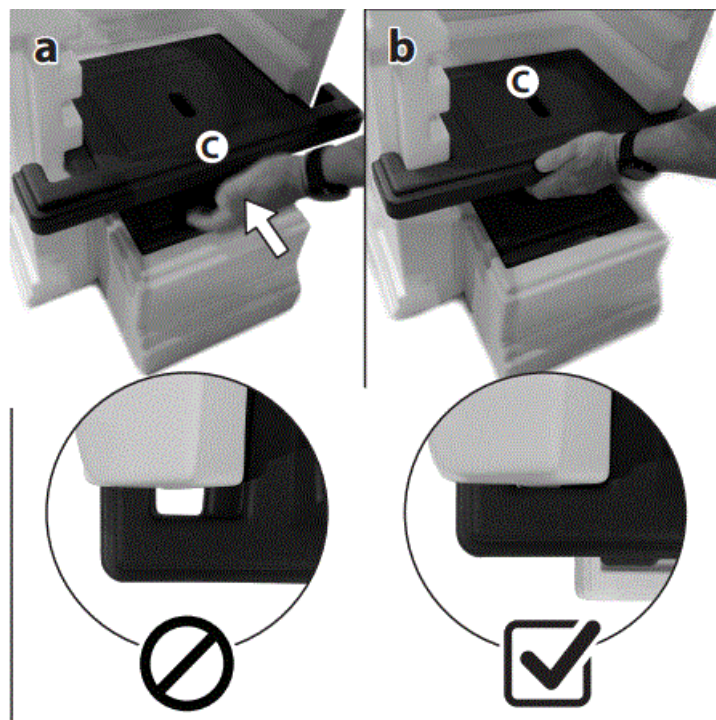
**DO NOT** slide rubber feet (B) across floor.  
**ALWAYS** lift Mobile Helper™ entirely off floor to move.



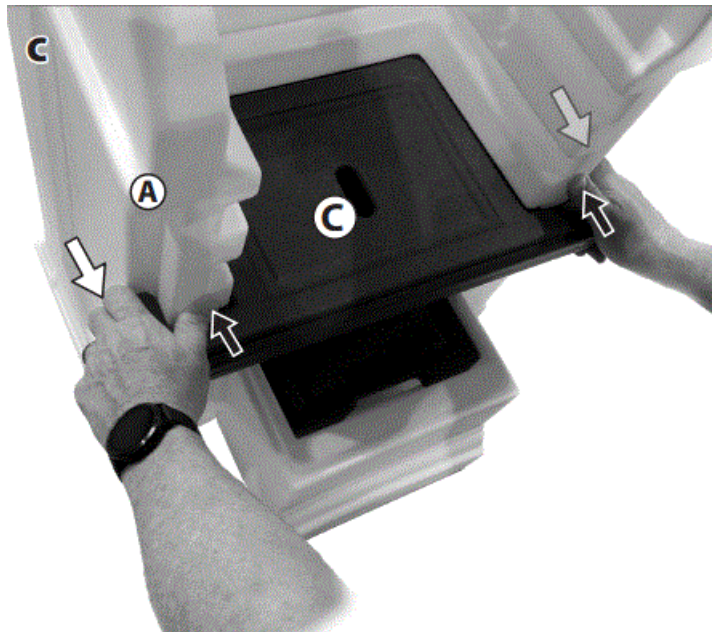


**4****Secure (C)**

Use palm of hand and firmly apply force at center of (C) using slapping motion 5a-5b. Repeat until (C) is seated properly.

**Remove (C)**


Grip both sides of (C) while applying pressure with thumbs against (A) as pictured in 5c.



**The Step2 Company, LLC.**

- 10010 Aurora-Hudson Rd. Streetsboro, OH 44241 USA
- 1-800-347-8372 USA & Canada Only (330)656-0440
- [www.step2.com](http://www.step2.com)

## Documents / Resources

	<p><a href="#">Step2 4154 Mobile Helper</a> [pdf] Instruction Manual 4154 Mobile Helper, 4154, Mobile Helper, Helper</p>
---	--

## References

-  [Kids Toys, Playhouses, Wagons & Outdoor Toys | Step2](#)