



## STEP2 4020 Cascading Cove With Umbrella User Manual

[Home](#) » [Step2](#) » STEP2 4020 Cascading Cove With Umbrella User Manual 

### Contents

- [1 STEP2 4020 Cascading Cove With Umbrella](#)
- [2 SAFETY INFORMATION](#)
- [3 CLEANING INSTRUCTIONS](#)
- [4 PARTS](#)
- [5 INSTALLATION INSTRUCTIONS](#)
- [6 Documents / Resources](#)
  - [6.1 References](#)



**STEP2 4020 Cascading Cove With Umbrella**



**INTENDED FOR CHILDREN FROM AGES 1 1/2 YEARS AND UP**

- OBSERVE ALL STATEMENTS AND WARNINGS TO REDUCE THE LIKELIHOOD OF SERIOUS OR FATAL INJURY. SAVE THIS SHEET FOR FUTURE REFERENCE.

**WARNING**

- CHOKING HAZARD
- Small parts. Sharp points. Adult assembly is required.

**WARNING**

- DROWNING HAZARD
- There is a risk of young children drowning in open containers of water. Adult supervision is always required.

**WARNING**

- BURN HAZARD
- Always check the temperature of the product before letting your children play with it.
- Remember that the product may cause burns if left in direct sunlight.
- Always be aware of the sun and weather conditions, and do not assume that the equipment is safe because the air temperature is not very high.

**SAFETY INFORMATION**

- Adult assembly is required.

- Provide continuous adult supervision at all times.
- Instruct children not to use the product until properly assembled.
- Holds up to 3 gal. (11.35 l.) of water and up to 10 lbs. (4.53 kg) of sand.
- Table legs are not removable. Attempting to remove legs can cause damage to the product.
- Take indoors or do not use when the temperature drops below 32°F (0°C).

## **CLEANING INSTRUCTIONS**

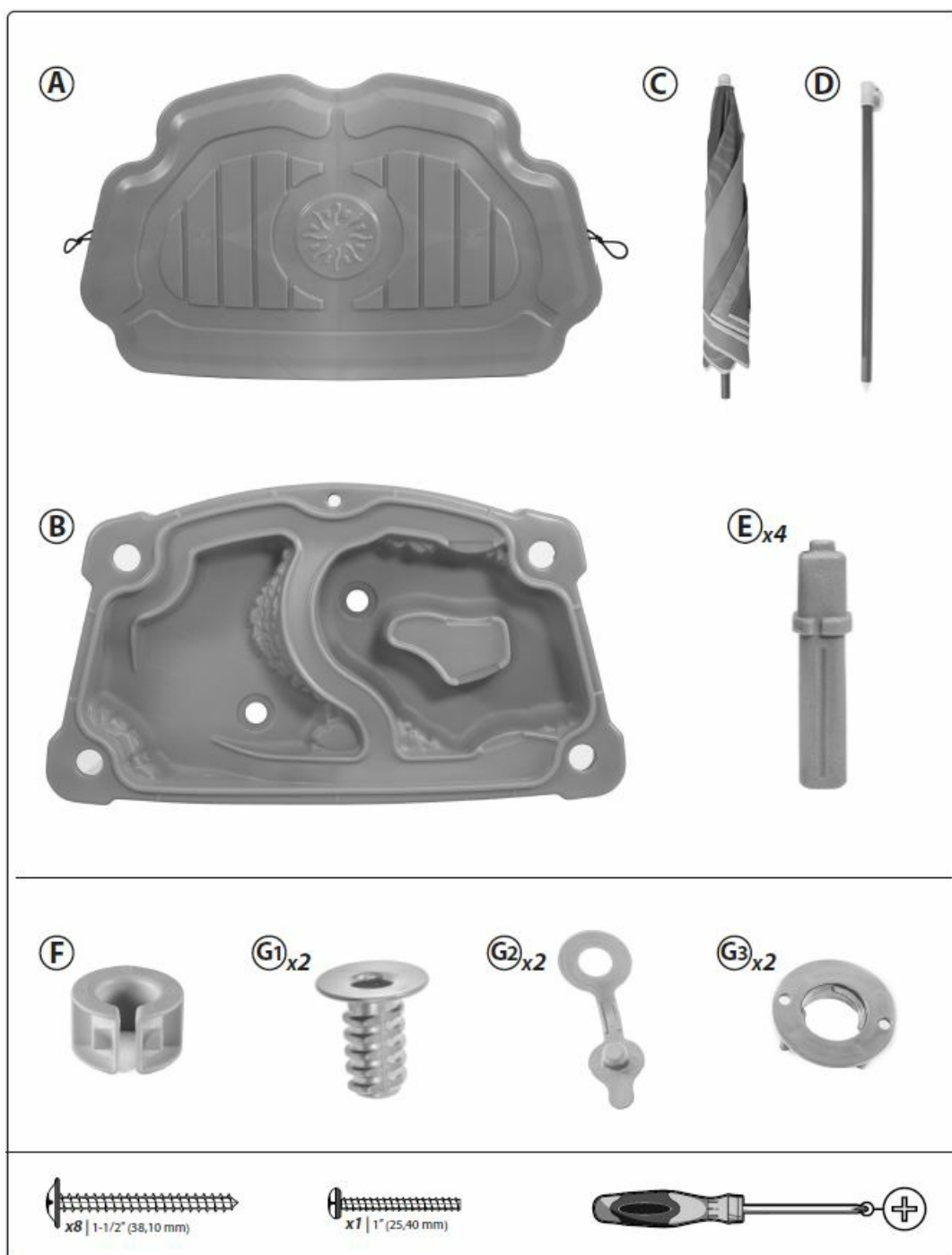
### **GENERAL CLEANING**

- Use a 50/50 mixture of white vinegar and water.
- Parents should thoroughly wash accessories with mild soapy water before use.
- Water should be changed frequently.
- Sanitize occasionally to remove organic debris and prevent bacterial growth.

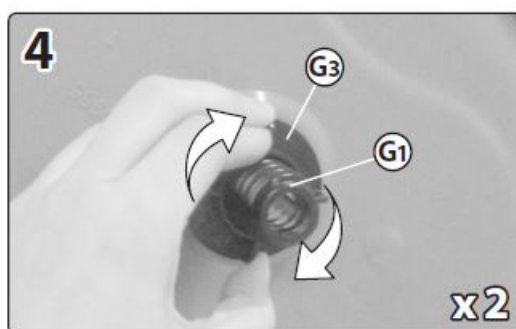
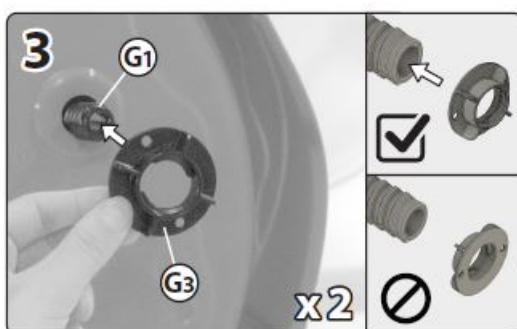
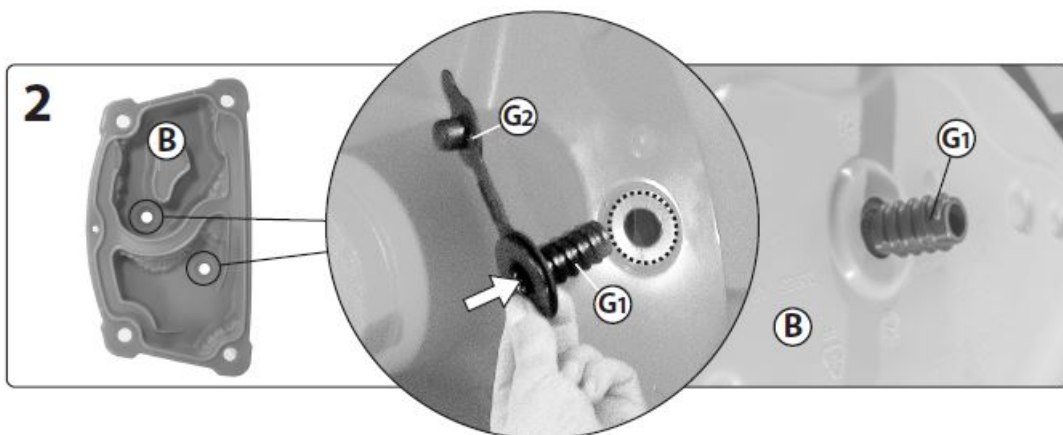
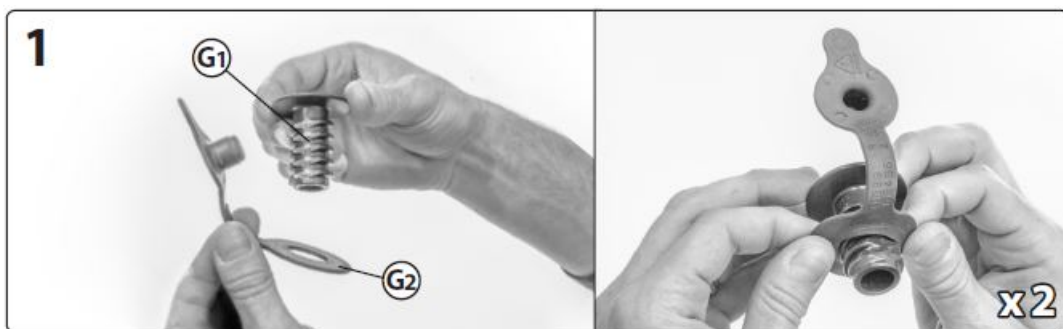
Please recycle when possible. Disposal must comply with all government regulations.

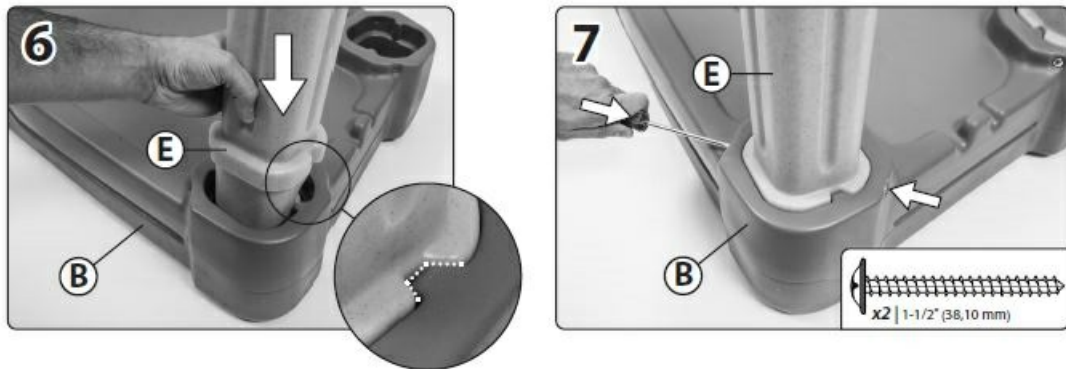
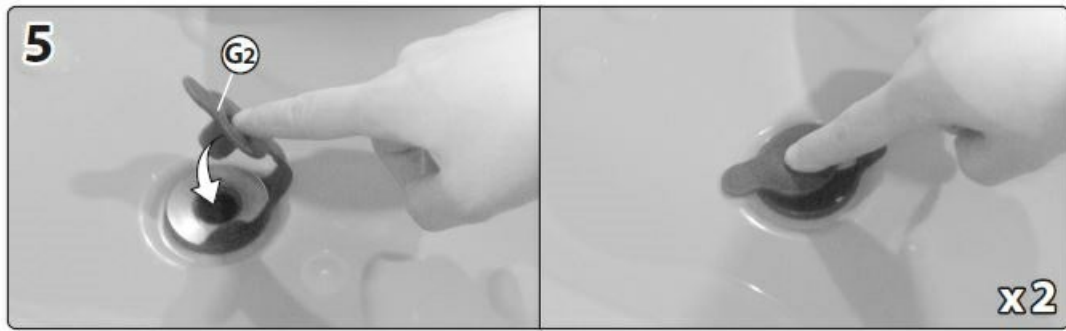
INSPECT THIS PRODUCT BEFORE EACH USE. TIGHTLY SECURE CONNECTIONS AND REPLACE DAMAGED OR WORN COMPONENTS. CONTACT THE STEP2 COMPANY FOR REPLACEMENT PARTS.

### **PARTS**

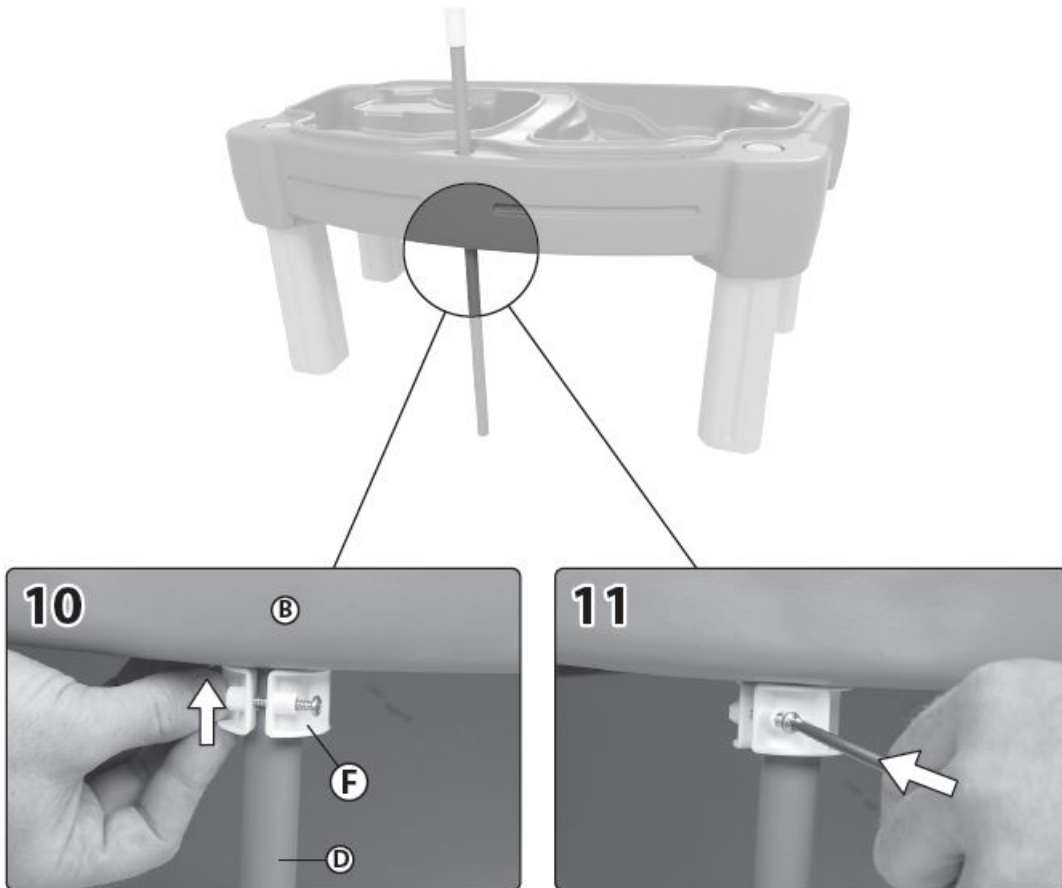
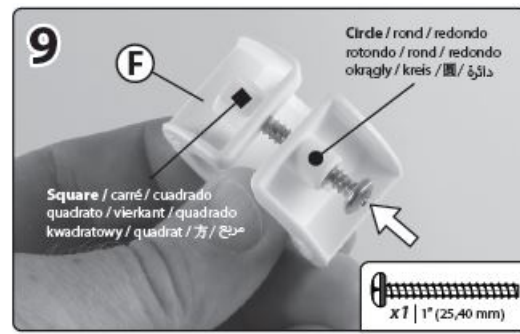
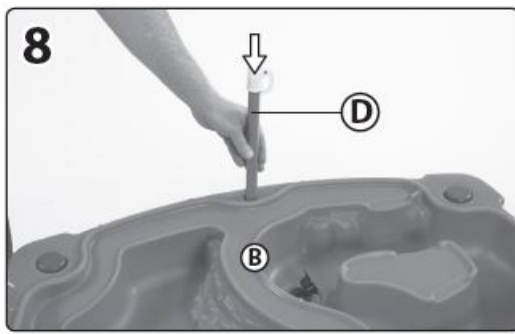


## INSTALLATION INSTRUCTIONS

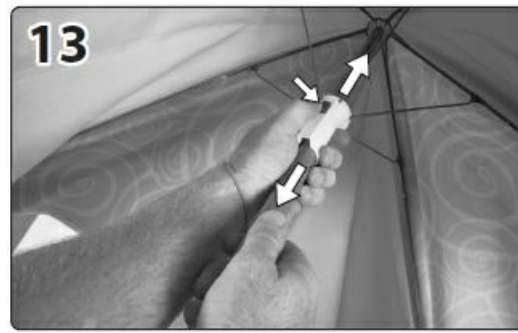
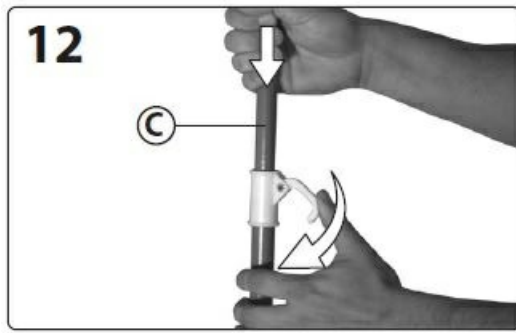




- Repeat steps 6-7 to the other 3 legs.



**Umbrella design & colour may vary**



[www.step2.com/survey/?partnumber=850900](http://www.step2.com/survey/?partnumber=850900).

## Documents / Resources



[STEP2 4020 Cascading Cove With Umbrella](#) [pdf] User Manual  
4020 Cascading Cove With Umbrella, 4020, Cascading Cove With Umbrella, Cove With Umbrella, With Umbrella, Umbrella

## References

- [Kids Toys, Playhouses, Wagons & Outdoor Toys | Step2](#)
- [User Manual](#)