



# Stemedu FZ4523A Sound Recordable Module Button Control Programmable Instruction Manual

[Home](#) » [Stemedu](#) » Stemedu FZ4523A Sound Recordable Module Button Control Programmable Instruction Manual 

## Contents

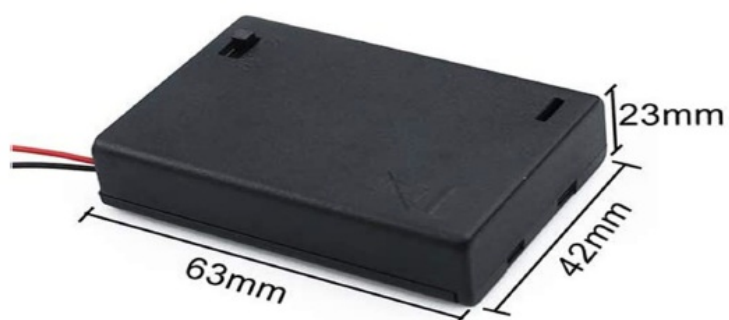
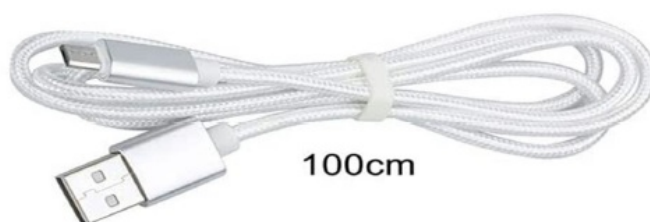
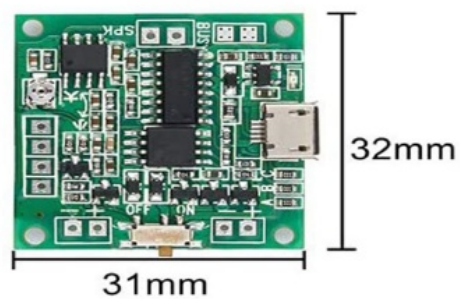
- [1 Stemedu FZ4523A Sound Recordable Module Button Control Programmable](#)
- [2 Packing List](#)
- [3 Supports all Windows systems and supports IOS systems](#)
- [4 Mode Switching](#)
- [5 Documents / Resources](#)
  - [5.1 References](#)

# Stemedu

**Stemedu FZ4523A Sound Recordable Module Button Control Programmable**



## Packing List



**Battery Box with ON/OFF Switch  
Requires 3 x AA (not included)**

**Play Button**

**Speaker**



### **Supports all Windows systems and supports IOS systems**

For Windows system: turns on the “computer” and finds the removable disk (U disk), the default format is FAT under Windows systems. CLICK the removable disk, DELETE the pre-stored Chinese song, PASTE the song files to the disk. (If you have many sound files, it will be played in sequence)



DVDV

(G:)



Drive (H:)

1.07 MB

3.96 MB

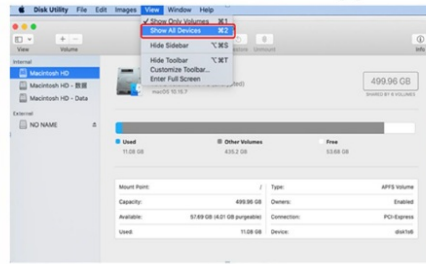
(Format and scheme must be selected and selected correctly to use)

1. Open drive

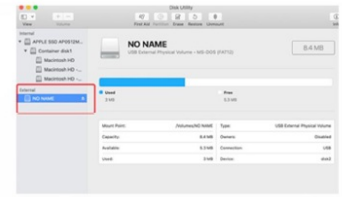


2. Select "View" >

"Show All Devices" in the upper left corner



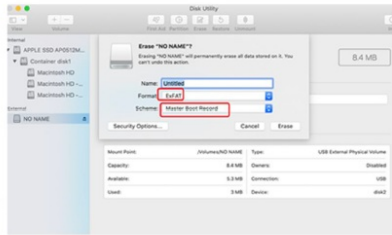
3. Select the disk to format



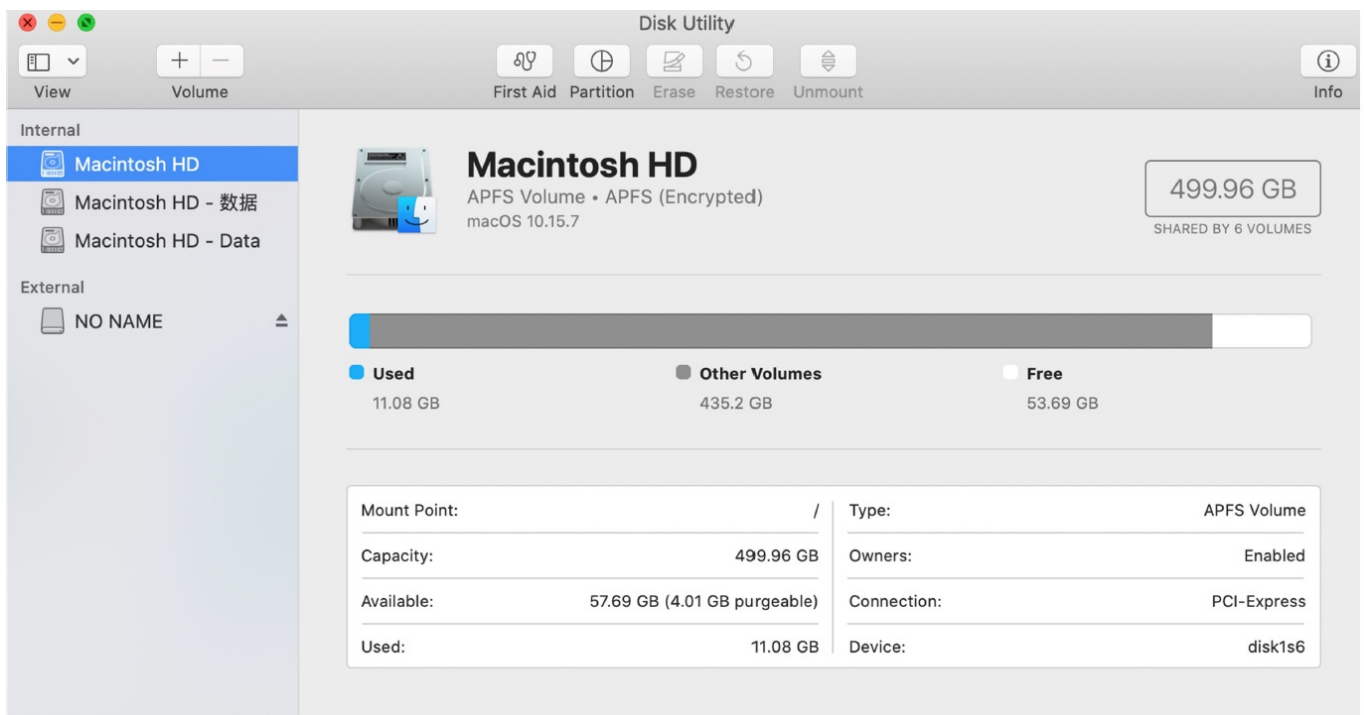
4. Select erase



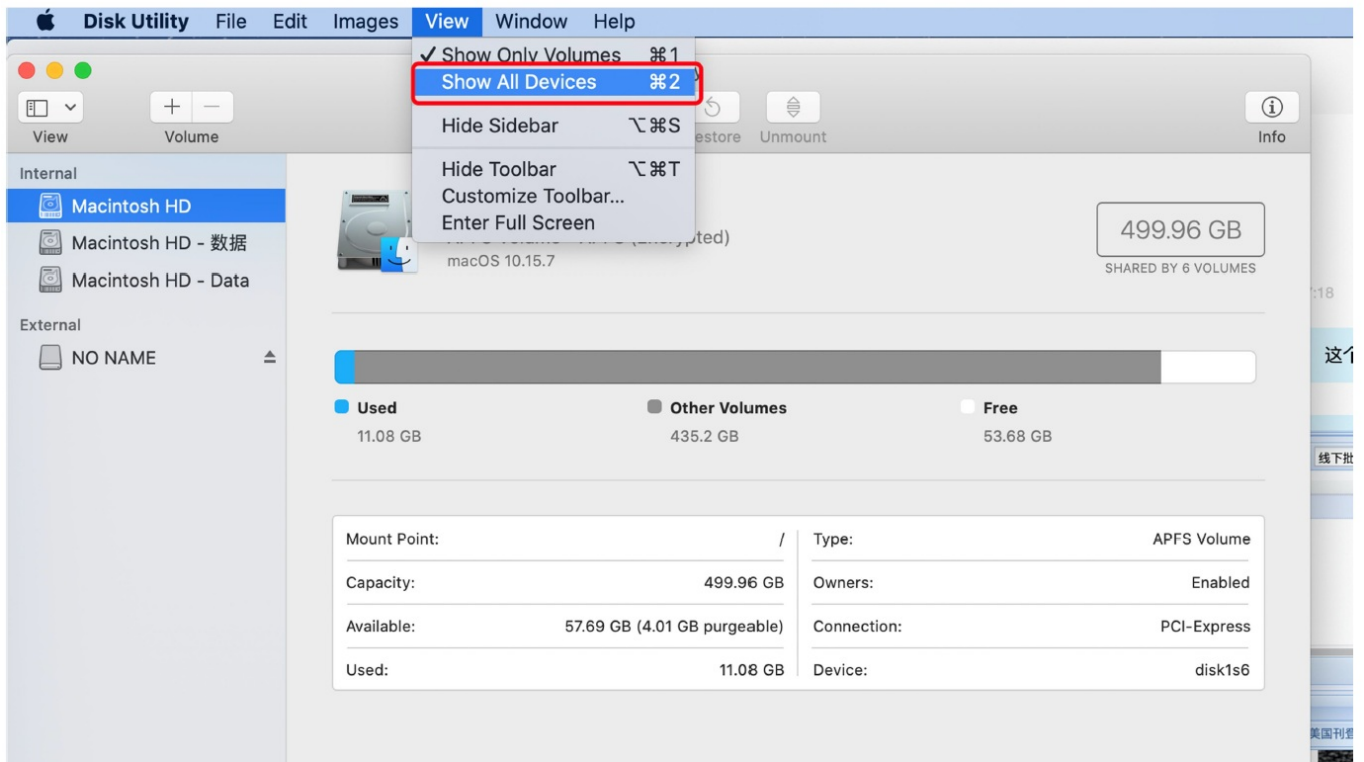
5. Format: Select "ExFAT", Scheme: select "Master Boot Record" option



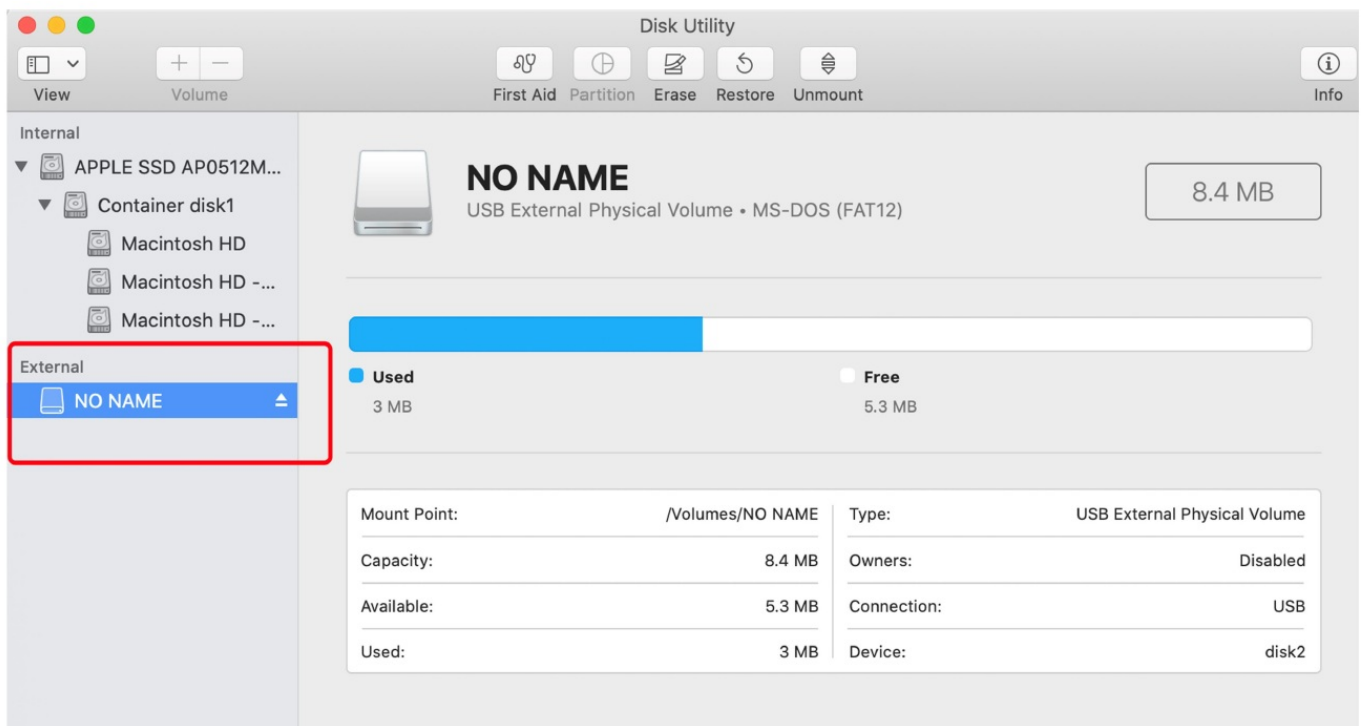
## Open Disk Utility



Click View-show all devices

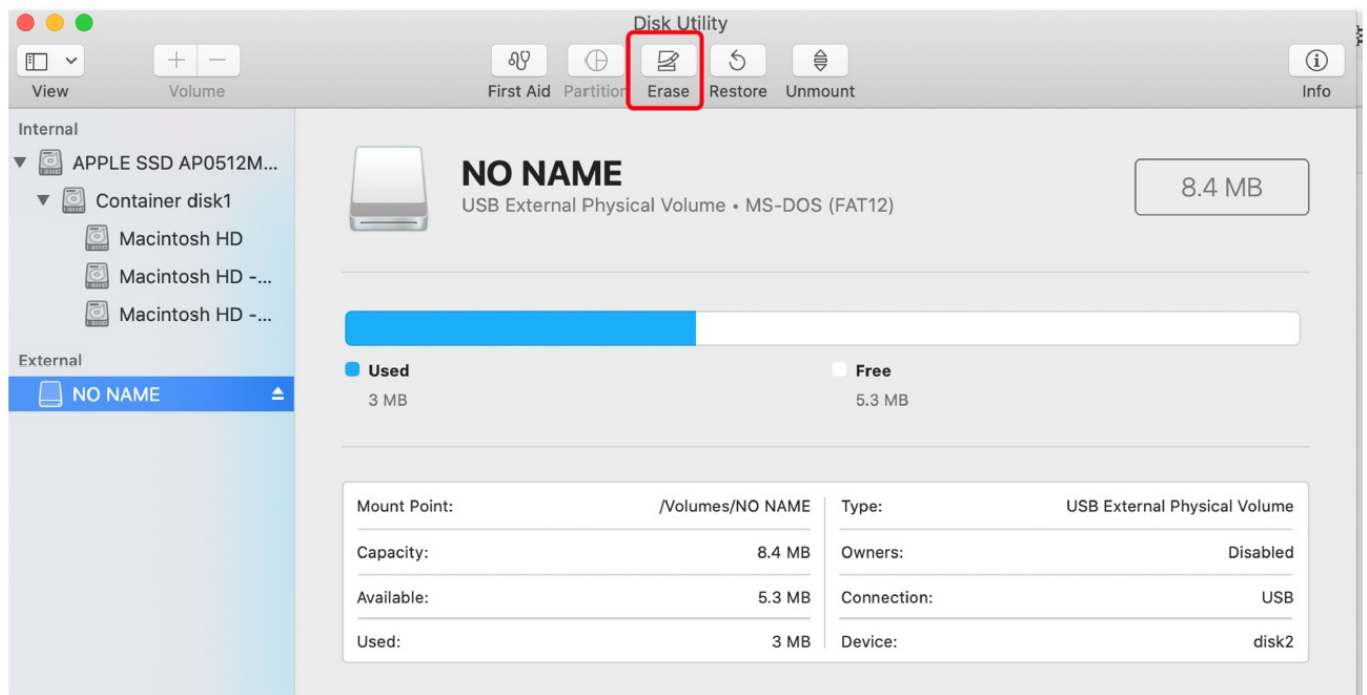


Choose the correct disk of the recording module



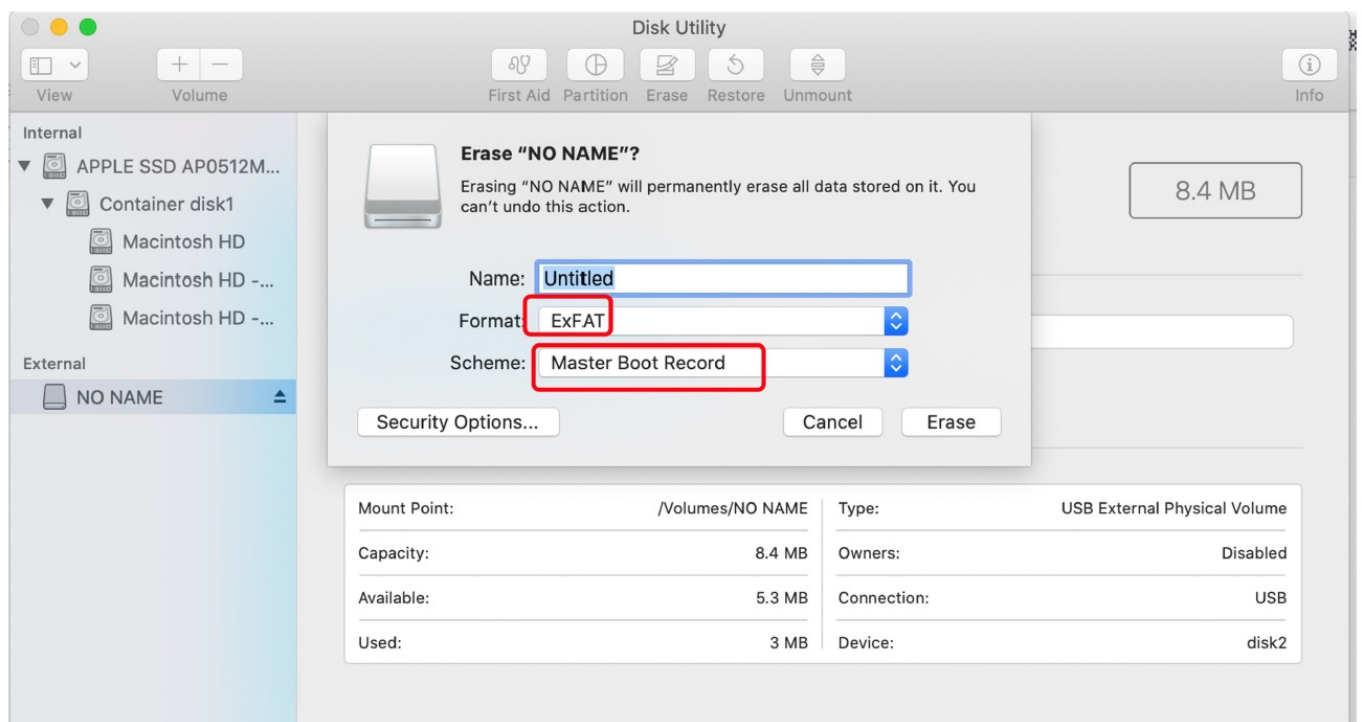
Click erase



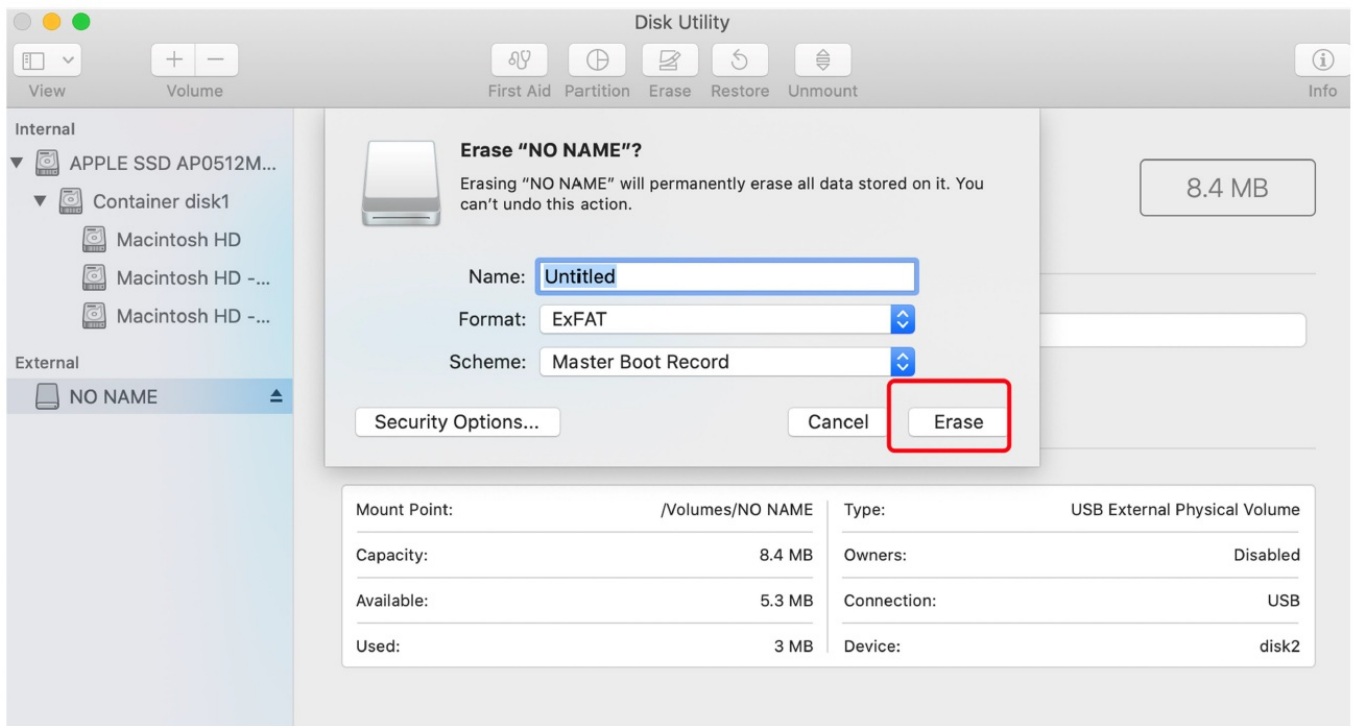


**Format: choose ExFAT**

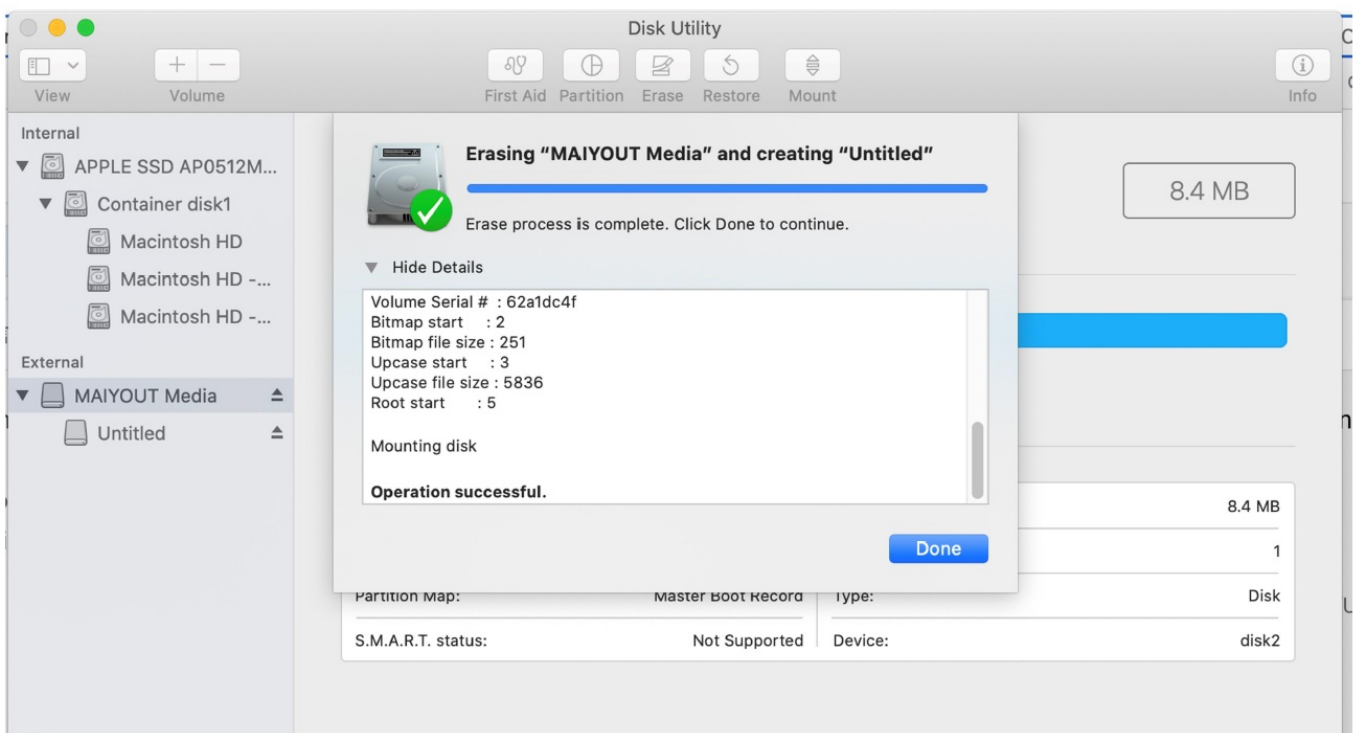
**Scheme: choose Master Boot Record**



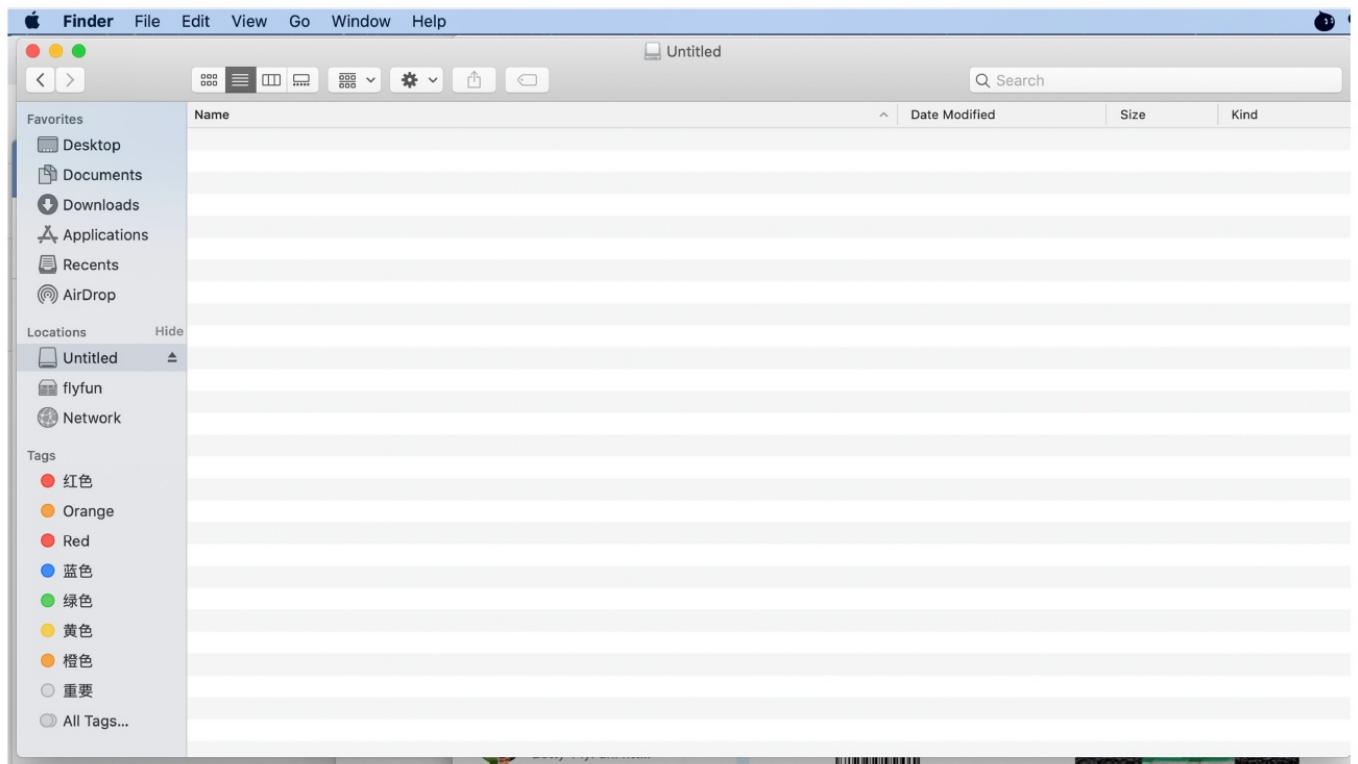
**Click Erase**



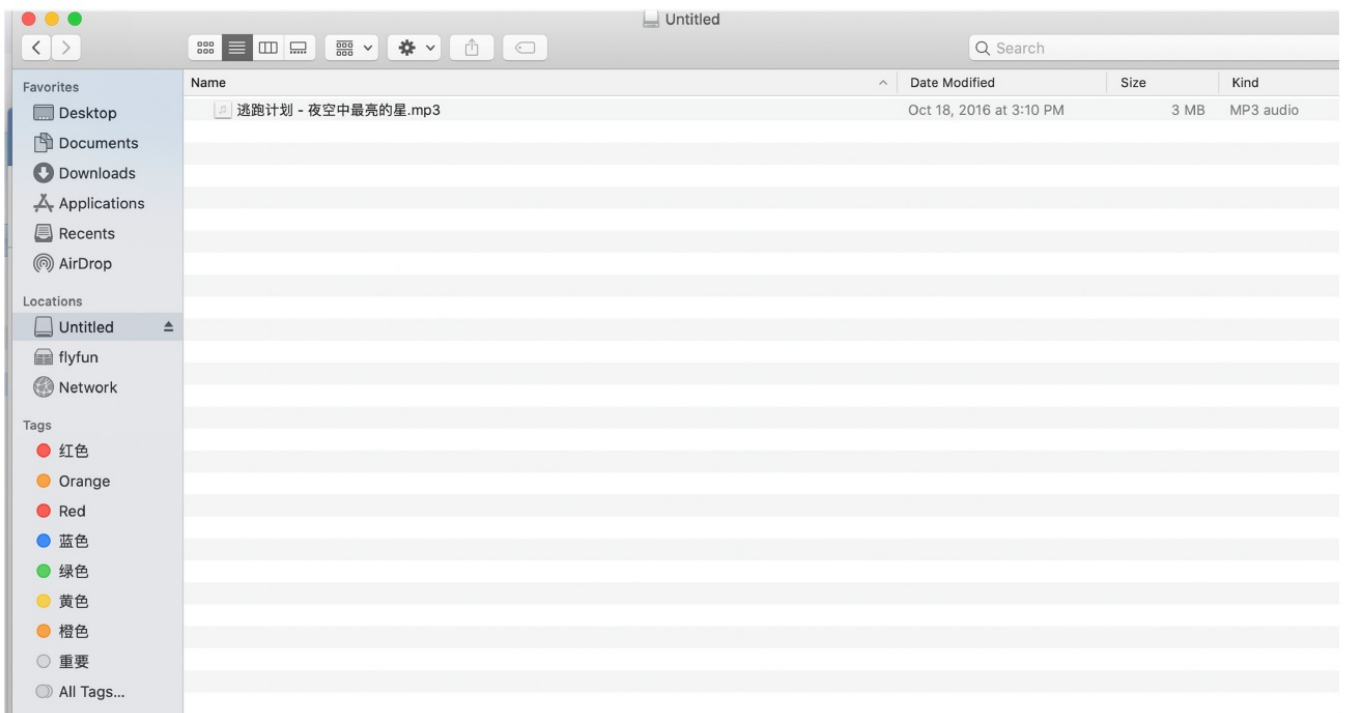
It will take a few minutes, when it shows: **Operation successful.** The disk will show up



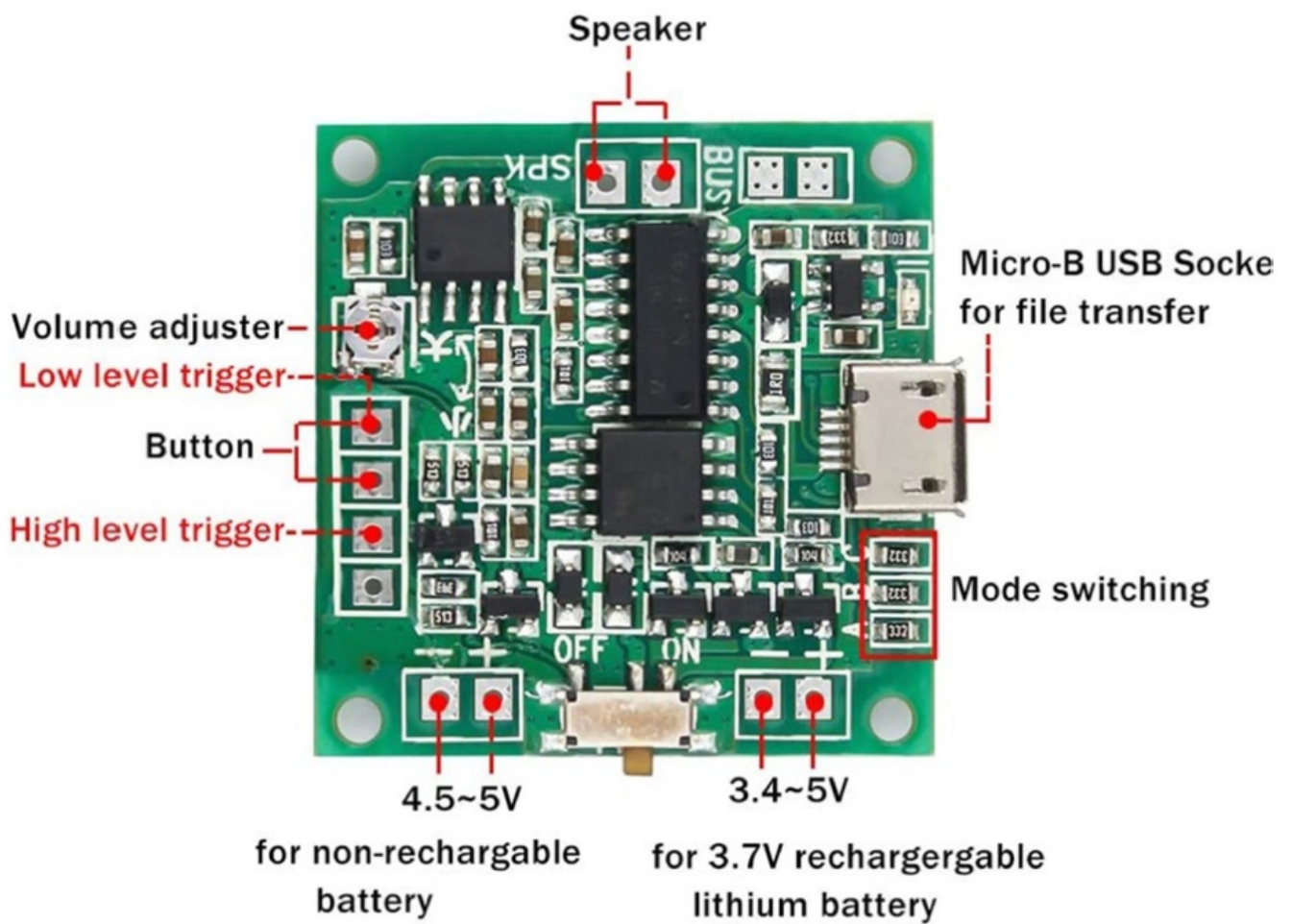
Open Application-United disk



## Copy MP3 song to the disk

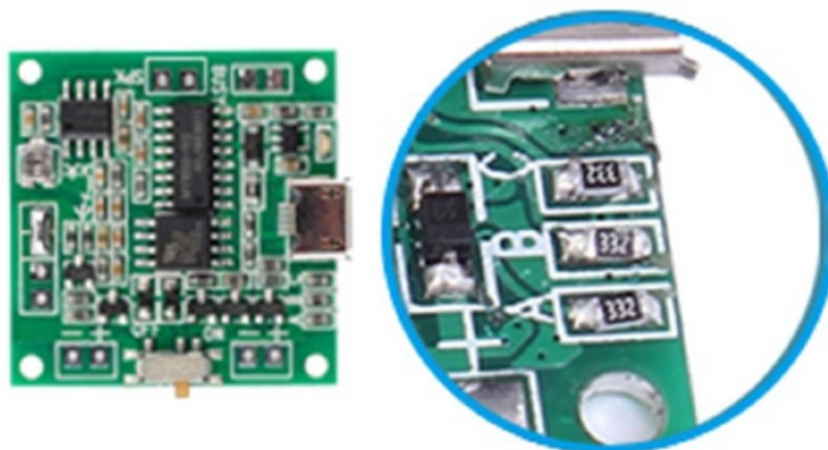






## Mode Switching

This item comes with the button and default mode: 000.  
 You can change to different modes by adjusting the 3.3K resistors.  
 (For the resistor, you need a soldering iron to take the resistor away)




A	B	C	Button Control	TTL Control
0	0	0	It will play the music once you press the button. If you press the button again during playing, it will stop immediately.	It will play the music once it receive a trigger signal(H/L level or pulse). If you give signal again during playing, it will stop immediately.
0	0	1	You need to hold down the button to play the music. It will stop once you release the button.	Keep giving trigger signal to play the music. It will stop once the signal disappears.
0	1	0	You need to hold down the button to play the music. It will cycle again and again if you keep holding. It will stop once you release the button.	Keep giving trigger signal to play the music. It will cycle again and again if the signal keep providing. It will stop once the signal disappears.
0	1	1	It will play the music once you press the button. If you press the button again during playing, it will replay from the beginning.	It will play the music once it receive a trigger signal. If you give the trigger signal again during playing, it will replay from the beginning.
1	0	0	It will play the music once you press the button. The button cannot be used during playing. It is available after the music stops.	It will play the music once it receives a trigger signal. It won't do anything if it receive trigger signal during playing.
1	0	1	It will play the music when you press the button and keep cycling before your second press.	It will play the music when it receives the trigger signal and keep cycling before it receive the signal again.
1	1	0	It will play the music once you press the button. The button cannot be used during playing. It is available after the music stops. If the time you hold down the button is longer than the time of the song, the module will begin to cycle. You can only put one song into it under this mode.	It will play the music when it receives the trigger signal. It won't do anything if it receive trigger signal during playing. If the time of the signal is longer than the time of the song, the module will begin to cycle. You can only put one song into it under this mode.

Any other questions, please feel free to contact me.  
Also, for bulk purchases, please contact me for the best price.  
Various modules can be customized

Thank you.  
Mia

## Documents / Resources

	<p><a href="#">Stemedu FZ4523A Sound Recordable Module Button Control Programmable</a> [pdf] Instruction Manual</p> <p>FZ4523A Sound Recordable Module Button Control Programmable, FZ4523A, Sound Recordable Module Button Control Programmable, Recordable Module Button Control Programmable, Module Button Control Programmable, Button Control Programmable, Control Programmable, Programmable</p>
---	--

## References

- [User Manual](#)