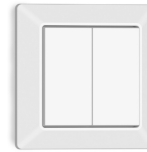


steinel Wireless Push Button App



## steinel Wireless Push Button App User Guide

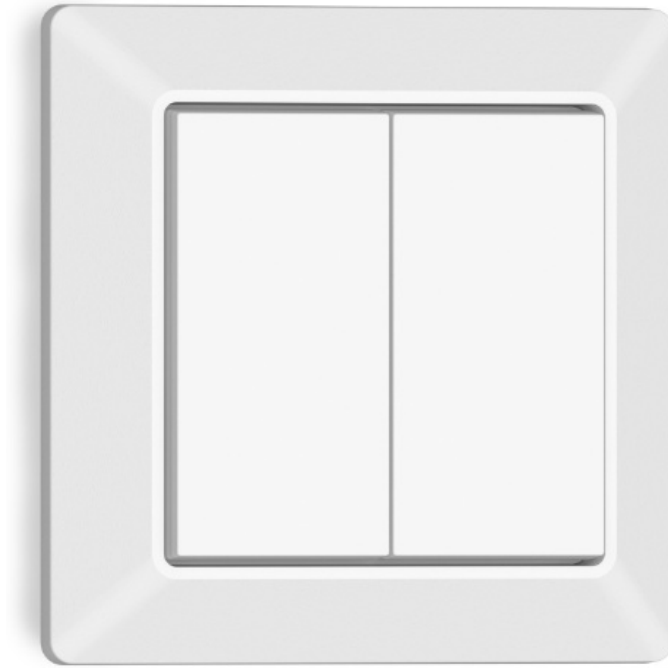
[Home](#) » [STEINEL](#) » steinel Wireless Push Button App User Guide 

### Contents

- 1 steinel Wireless Push Button App
- 2 Product Usage Instructions
- 3 STEINEL CONNECT APP
- 4 Get ready to start Mesh-Update
- 5 Carry out Mesh-Update
- 6 Update firmware
- 7 Carry out firmware update
- 8 Set up product in the new network
- 9 Add product to network
- 10 Documents / Resources
  - 10.1 References



**steinel Wireless Push Button App**



## Product Specifications

- Brand: STEINEL
- Model: Connect App
- Compatibility: Existing STEINEL Connect products
- Standard: Bluetooth Mesh

## Product Usage Instructions

### 1. Get Ready to Start Mesh-Update:

Switch from the STEINEL Smart Remote app to the STEINEL Connect app.

### 2. Carry Out Mesh-Update:

1. Make sure you are ready for the update.
2. Follow the on-screen instructions to carry out the Mesh-Update.

### 3. Update Firmware:

1. Ensure the Mesh-Update is completed successfully.
2. Proceed with updating the firmware of your product.

### 4. Set Up Product in the New Network:

Create a new network if one does not already exist. If an existing network is in place, skip to steps 6 and 7.

### 5. Add Product to Network:

Add your product to the newly created network.

### 6. Finish Configuring Product:

Complete the configuration of your product within the network.

**Note:** For any further assistance, reach out to our technical support service at [service@steinel.de](mailto:service@steinel.de) or call +49 (0) 5245 / 448 – 188.

Have fun starting up your STEINEL products!

## FAQ:

- **Q: What should I do if I encounter issues during the Mesh-Update process?**

A: In case of any problems during the Mesh-Update, contact our technical support for guidance and assistance.

- **Q: Do I need to create a new network for each product?**

A: You only need to create a new network if one does not already exist. Otherwise, add your product to an existing network.

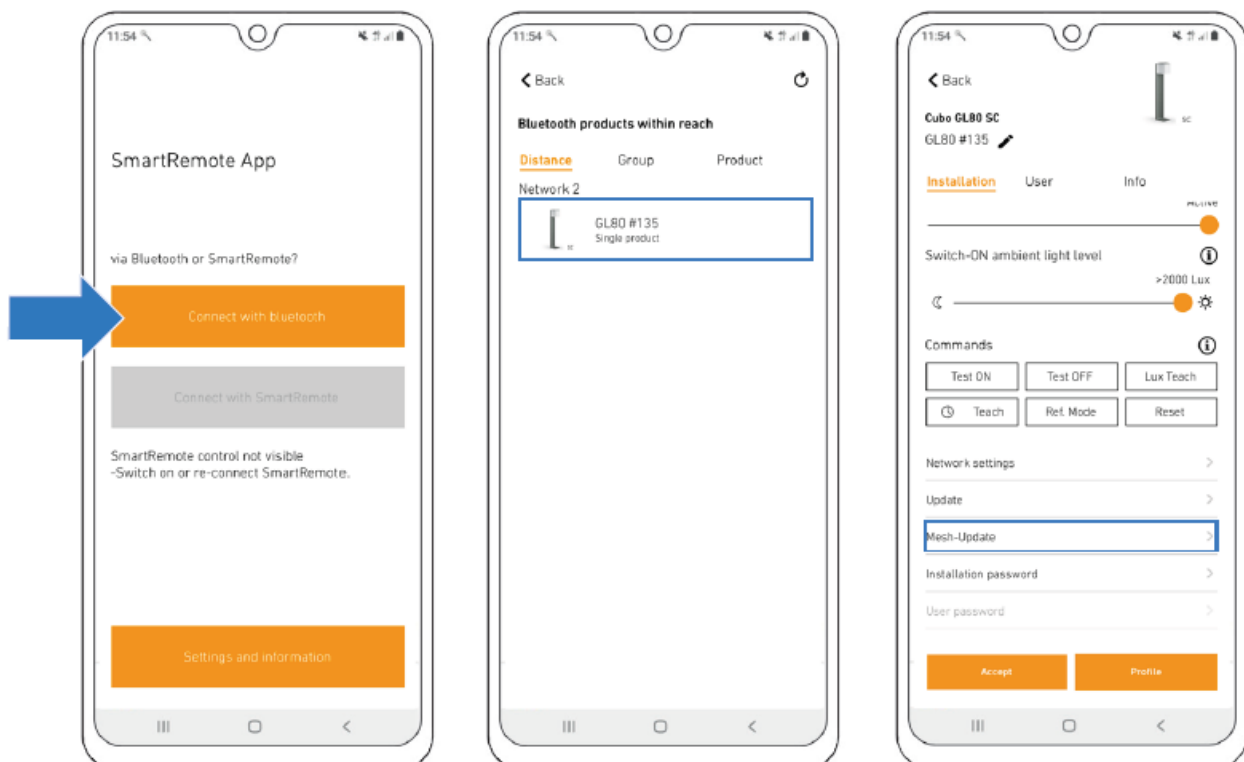
## STEINEL CONNECT APP

This is how to update your existing STEINEL Connect product to the new Bluetooth Mesh standard:  
Switch from the STEINEL Smart Remote app to the STEINEL Connect app.

### STEINEL Connect App



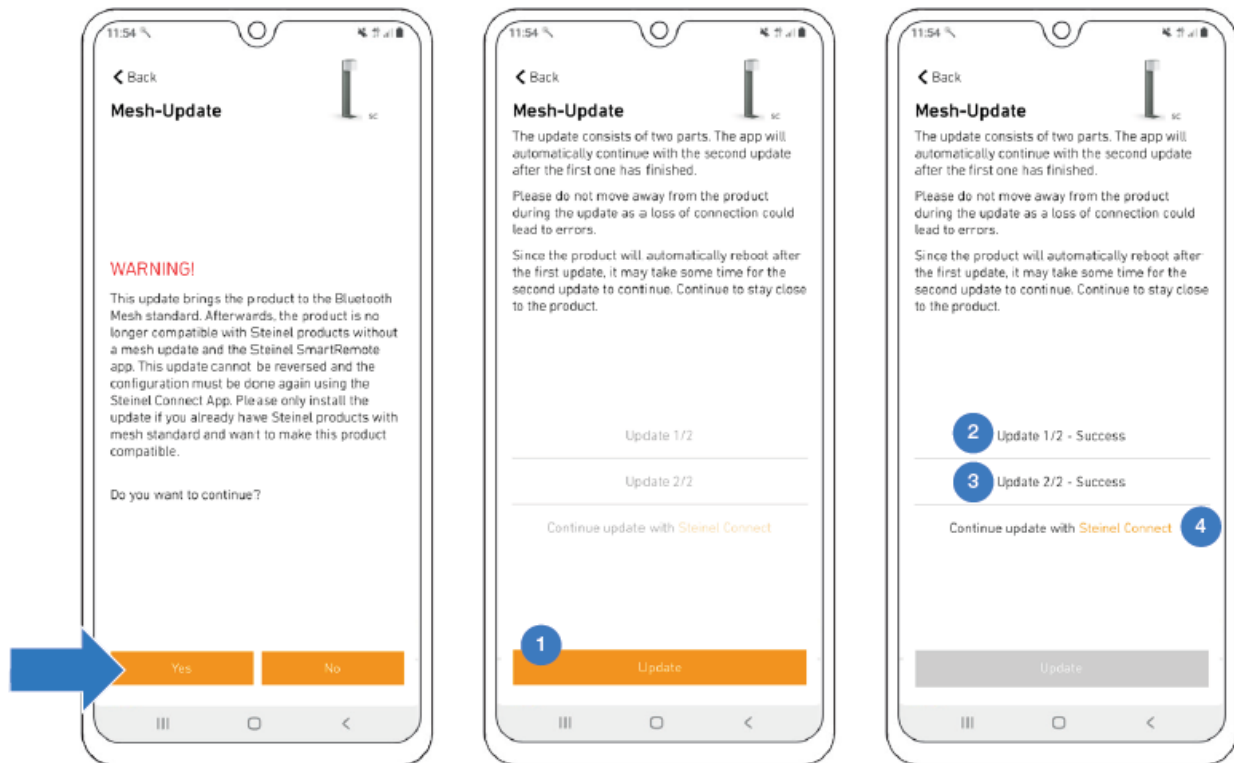
## Get ready to start Mesh-Update



- Download the STEINEL Connect app. You will need this to complete the process.
- Start the STEINEL Smart Remote app and tap “Connect via Bluetooth”.
- Via Bluetooth, now search for the product you want to update and connect to it.
- Scroll to the network, update and password settings.

- Select the new “Mesh-Update” button. (If this button is not displayed, go one step back.)

## Carry out Mesh-Update



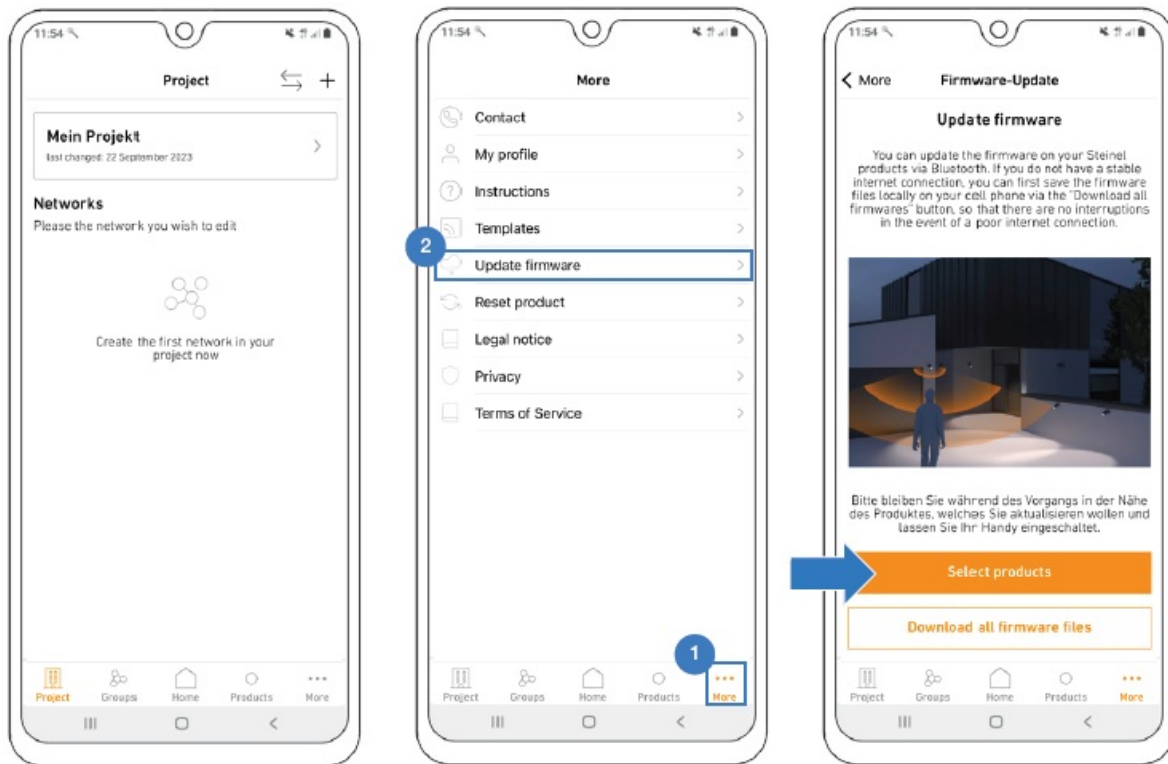
**Note:** You cannot undo the Mesh-Update!

1. Tap “Update” to start updating.
2. Update 1/2 now begins.

Once update 1/2 has been completed, the product will re-start. The connection is restored automatically.

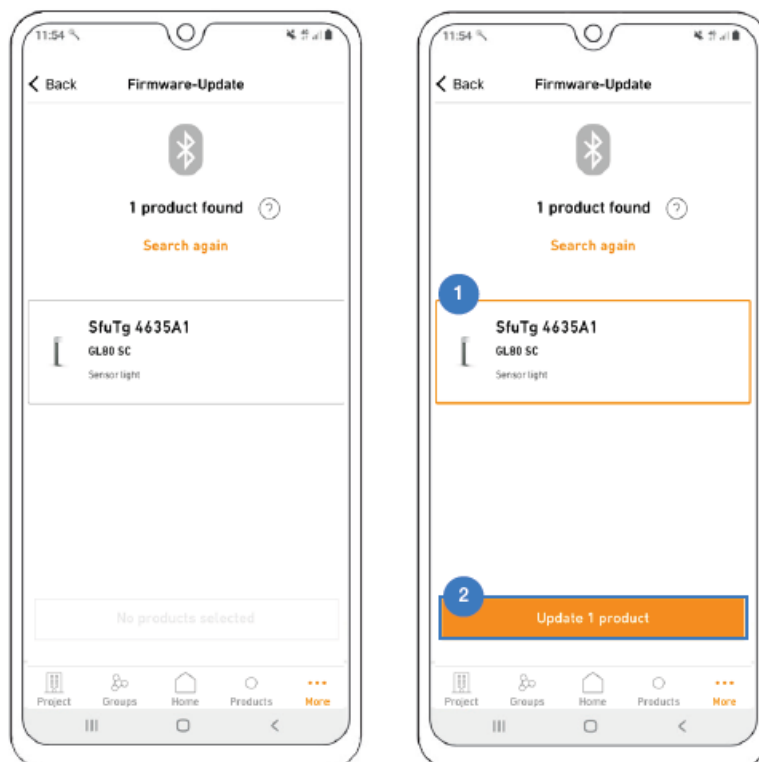
3. As soon as the connection is restored, update 2/2 will start automatically.
4. Having successfully completed both updates, you must now continue in the STEINEL Connect app. Tapping the orange link automatically opens the app.

## Update firmware



1. In the STEINEL Connect app, navigate to the “More” tab.
2. And open “Update firmware”.  
Tap “Select products”.

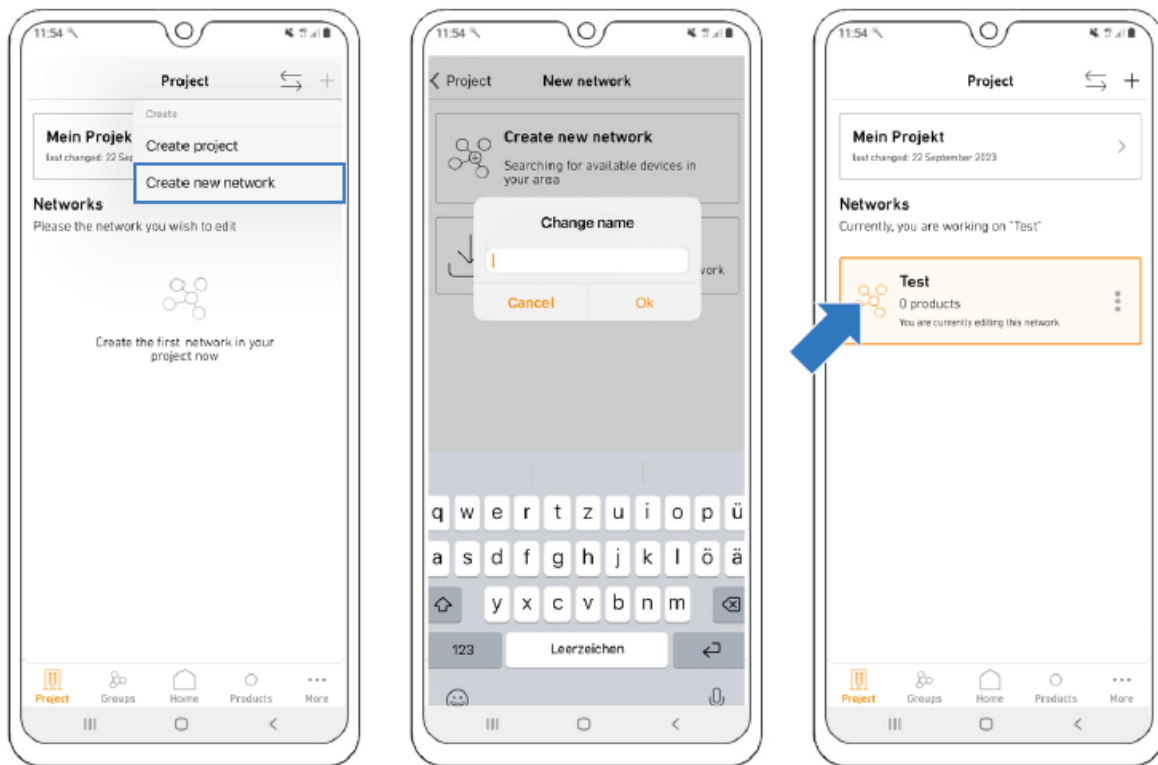
## Carry out firmware update



1. You will now see the product with the completed Mesh-Update as “SfuTg xxxxxx”.
2. Select the product and start the last update.

You have now successfully completed the Mesh-Update. You will now find the product with the correct designation in the product search function and can add it to your network.

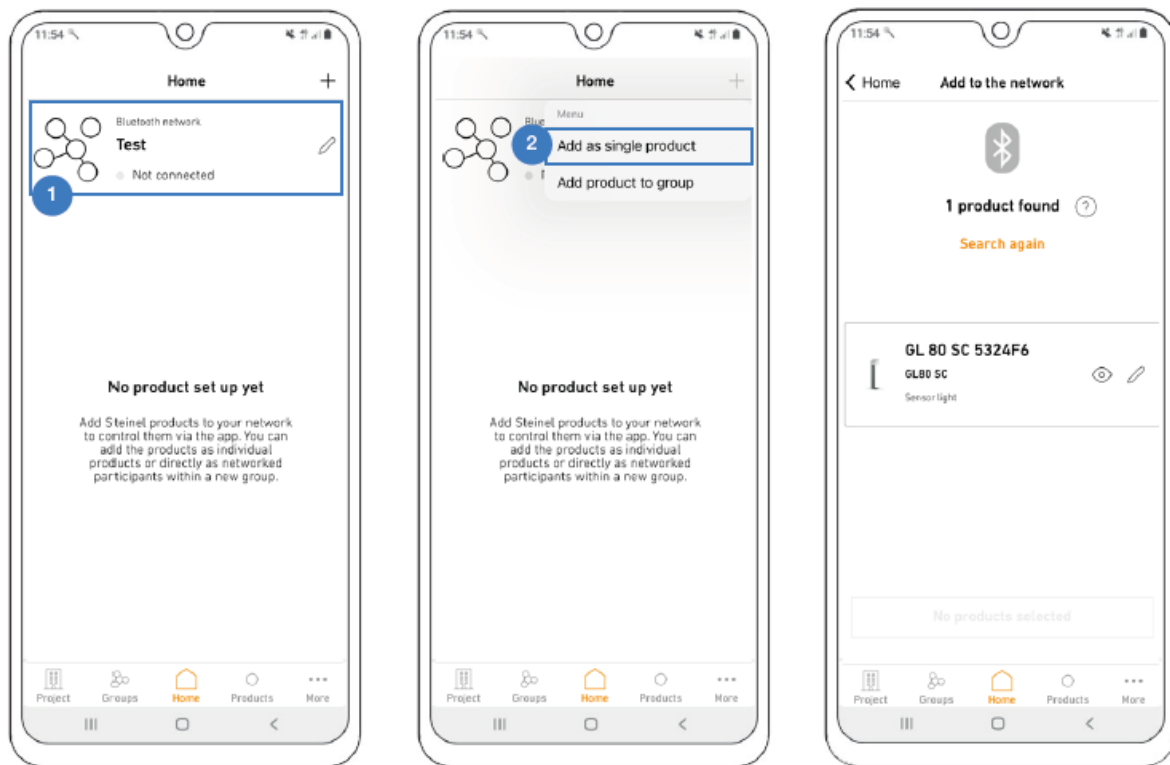
## Set up product in the new network



**Note:** You only need create a new network if a network does not already exist. Otherwise continue at points 6 and 7.

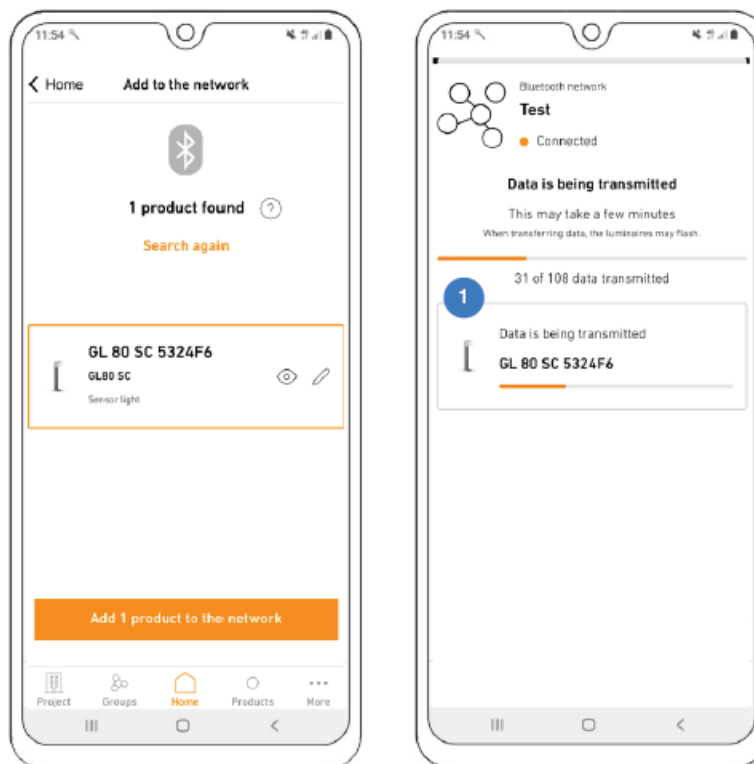
- Create a new network.
- Give the network an appropriate name.
- The newly named network will now come up as one of your own networks.

## Add product to network



1. Select your network.
  2. Add your product as a single product.
- The product will now be added to the network.

### Finish configuring product



- 1 Once the data transfer is complete, the product can be used as normal.

### Any questions?


Our technical support service will be please to assist you: [service@steinel.de](mailto:service@steinel.de)

**Phone:** +49 (0) 5245 / 448 – 188

Have fun starting up your STEINEL products!

110102312 03/24 13138 Subject to technical modification without notice.

## Documents / Resources

	<p><a href="#">steinel Wireless Push Button App</a> [pdf] User Guide PB2-Bluetooth, Wireless Push Button App, Push Button App, Button App, App</p>
---	--

## References

- [User Manual](#)

### Manuals+, Privacy Policy

This website is an independent publication and is neither affiliated with nor endorsed by any of the trademark owners. The "Bluetooth®" word mark and logos are registered trademarks owned by Bluetooth SIG, Inc. The "Wi-Fi®" word mark and logos are registered trademarks owned by the Wi-Fi Alliance. Any use of these marks on this website does not imply any affiliation with or endorsement.