

STEGO LPS 164 Small Semiconductor Loop Heater User Guide

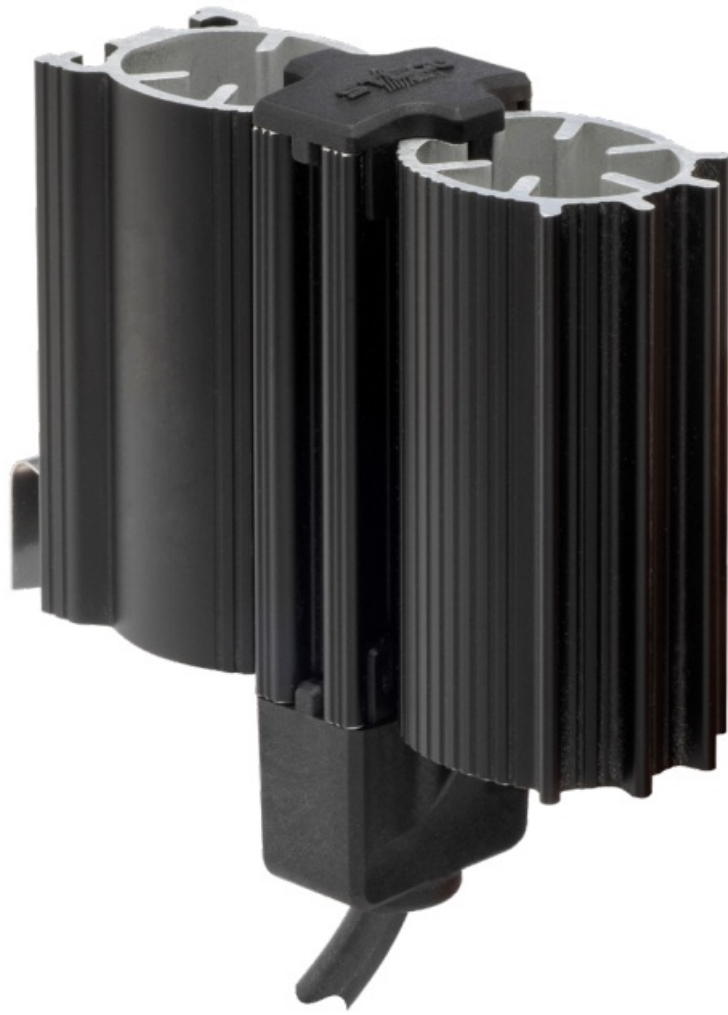
[Home](#) » [STEGO](#) » **STEGO LPS 164 Small Semiconductor Loop Heater User Guide** 

Contents

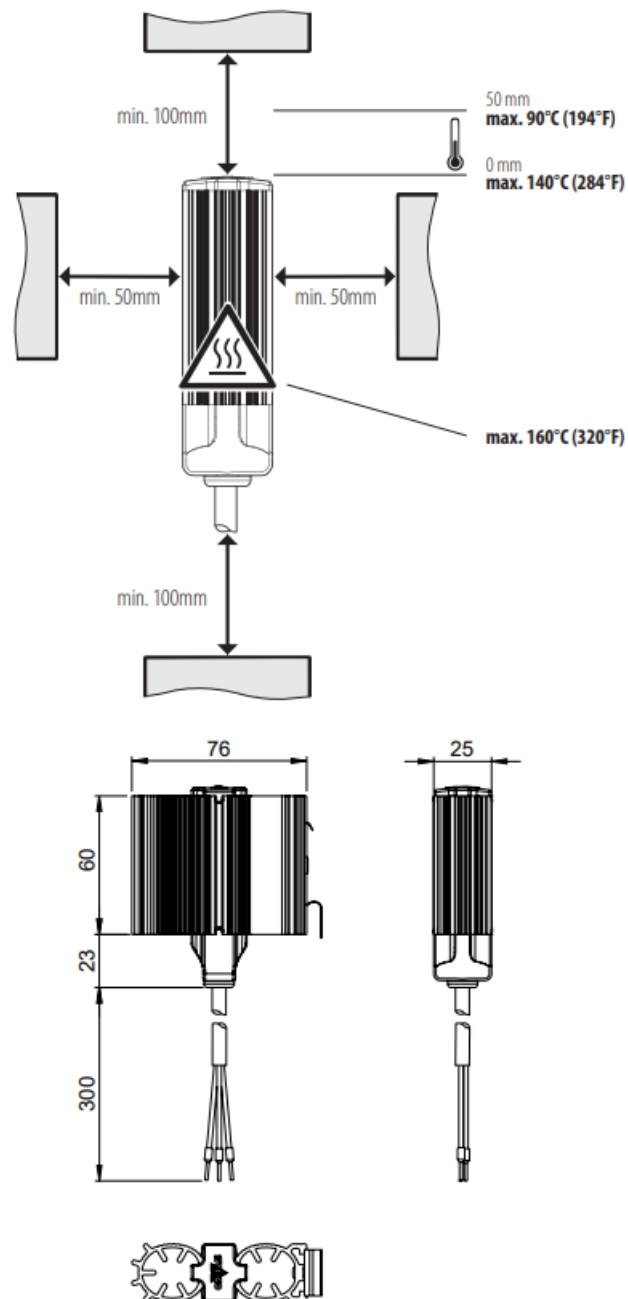
- [1 STEGO LPS 164 Small Semiconductor Loop Heater](#)
- [2 Product Overview](#)
- [3 Specifications](#)
- [4 USAGE](#)
- [5 Safety considerations](#)
- [6 Documents / Resources](#)
- [7 Related Posts](#)



STEGO LPS 164 Small Semiconductor Loop Heater



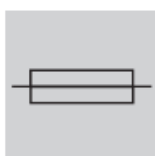
Product Overview



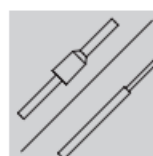
Specifications



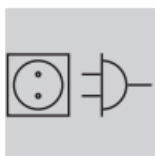
max. 3000m



10W, 20W, 30W: 4A
40W, 50W: 6A



0.5-1.5mm² / 0.5-2.5mm²



AC/DC 120 - 240V



-45 ... +70°C
(-49 ... +158°F)



max. 90%rH

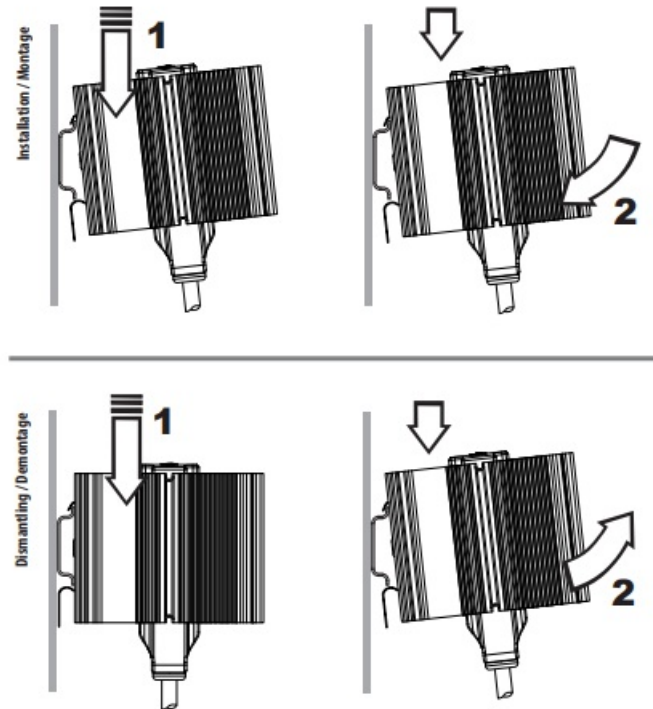


0.1 - 0.2kg

Warning: There is a risk of personal injury and equipment damage if the connection values are not observed or polarity is incorrect!

USAGE

Heating units are used to prevent the development of condensation and drops in temperature in control cabinets. The heaters must only be used in stationary, sealed housings for electrical devices. Heating units without an integrated thermostat should be connected in series to a suitable thermostat for temperature control. Heating units must not be used for the heating of rooms.



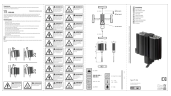
Safety considerations

- Installation must only be performed by qualified electrical technicians in observation of the respective national power-supply guidelines (IEC 60364).
- The safety measures according to VDE 0100 are to be ensured.
- The technical specifications on the type plate must be strictly observed!
- The person using the heater must ensure through the installation that no damage is incurred to the components installed in the immediate vicinity by the hot surfaces (thermal energy).
- The device must be connected to mains via an all-pole disconnecting device (with contact gap of at least 3 mm in the switched-off state).
- The device must not be operated in environments with aggressive atmospheres.
- The device is installed vertically (air blow direction upwards).
- No changes or modifications must be made to the device.
- In the event of any damage to or malfunction of the heating unit, the device must not be repaired or put into operation (dispose of the heating unit).
- Dismantle the heater only after it has cooled down.

Attention! The heater must not be mounted on flammable materials (e.g. wood, plastic etc.).

Notice: The manufacturer accepts no liability in the case of failure to observe this brief instruction, improper use and changes or damage to the device.

Documents / Resources



[STEGO LPS 164 Small Semiconductor Loop Heater](#) [pdf] User Guide

LPS 164 Small Semiconductor Loop Heater, LPS 164, Small Semiconductor Loop Heater, Semiconductor Loop Heater, Loop Heater

[Manuals+](#).