

Steelcase WCECLIPSE Eclipse Light Instruction Manual

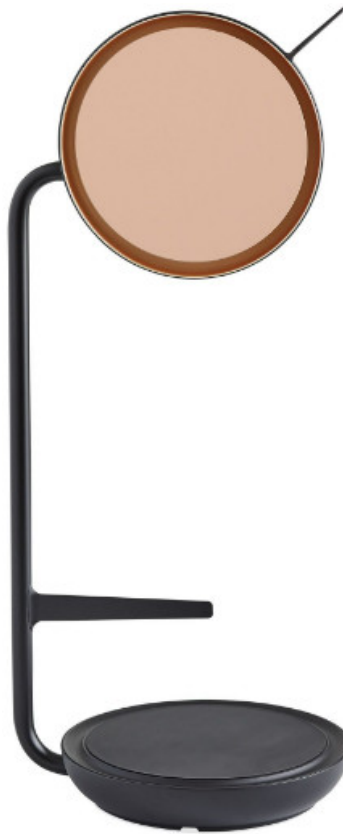
[Home](#) » [Steelcase](#) » Steelcase WCECLIPSE Eclipse Light Instruction Manual 

Steelcase[®] Steelcase Eclipse Light Assembly Instructions

Contents

- [1 WCECLIPSE Eclipse Light](#)
- [2 Power Supply Options](#)
- [3 Safety Instructions](#)
- [4 CE Declaration of Conformity](#)
- [5 FCC Statement](#)
- [6 Notice to Canadian Users](#)
- [7 Documents / Resources](#)
 - [7.1 References](#)

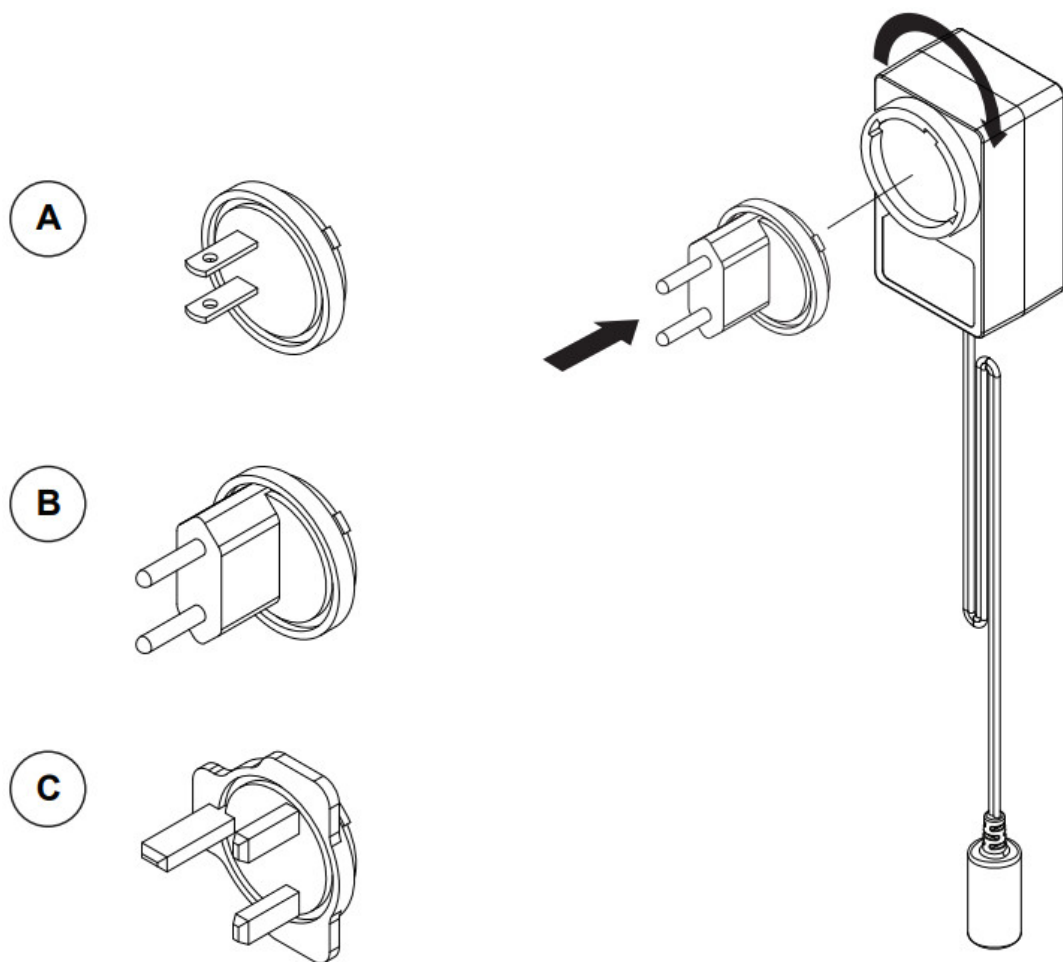
WCECLIPSE Eclipse Light



How-to video

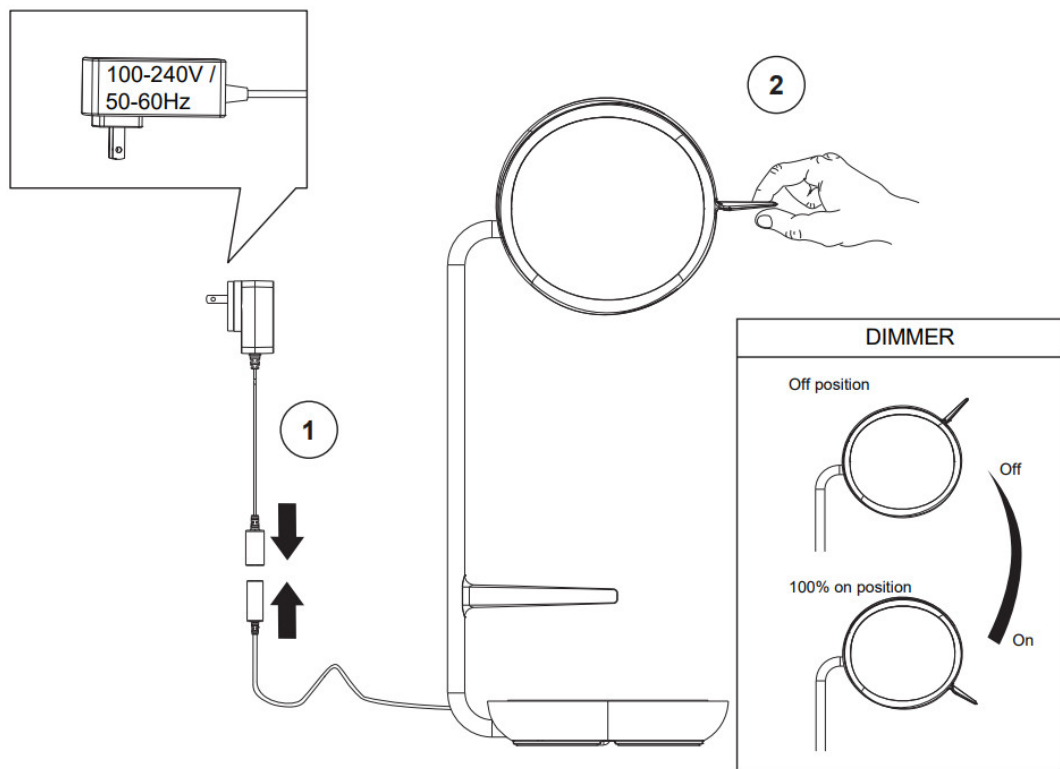
<https://steelcaseproductinfo.qrd.by/eclipse-light-emea>

Power Supply Options



Safety Instructions

- Indoor use only. Do not expose this light / power adapter to humidity or water.
- Do not use if damaged.
- Do not modify or repair.
- For EMEA: Information pertaining to the disposal or recycling of the product for responsible management of electronic waste at the end of the product's useful life, visit: <https://www.steelcase.com/eu-en/services/>
- Product is RoHS compliant.
- For AMER: Consult local regulations pertaining to the disposal or recycling of the product for responsible management of electronic waste at the end of the product's useful life.



CE Declaration of Conformity

Hereby, Steelcase Inc. declares that the product type Eclipse Light is in compliance with the following directives: Low Voltage Directive 2014/35; Electromagnetic Directive 2014/35/EU; RoHS Directive 2011/65/EU, as amended, including Directives 2015/863/EU and 2017/2102/EU.

The full text of the CE declaration of conformity is available at the following internet address:
<https://www.steelcase.com> Steelcase Inc.

901 44th St SE

Grand Rapids, MI 49508, USA

UKCA Declaration of Conformity

Hereby, Steelcase Inc. declares that the product type Eclipse Light is in compliance with the following directives: Electrical Equipment (Safety) Regulations 2016; Electromagnetic Compatibility Regulations 2016; the Restriction of the Use of Certain Hazardous Substances in Electrical and Electronic Equipment Regulations 2012 (as amended) [UK RoHS 2012].

The full text of the UKCA declaration of conformity is available at the following internet address:
<https://www.steelcase.com/> Steelcase Inc.

901 44th St SE

Grand Rapids, MI 49508, USA

Efficiency Class

This product contains a light source of energy efficiency class G.

LED Source

The LED source contained in this luminaire requires heatsinking for proper operation. The structure of this luminaire provides the required heatsinking for the LED source to properly function. Due to this, the light source cannot be replaced without replacing the full luminaire.

Manufacturer

Steelcase

LineOne Phone

+49 (0) 80 31 405 – 111

Email

FCC Statement

This device complies with Part 15 of the FCC Rules. Operation is subject to the following two conditions: (1) This device may not cause harmful interference, and (2) this device must accept any interference received, including interference that may cause undesired operation.

Note: This equipment has been tested and found to comply with the limits for a Class B digital device, pursuant to Part 15 of the FCC Rules. These limits are designed to provide reasonable protection against harmful interference in a residential installation.

This equipment generates, uses, and can radiate radio frequency energy and, if not installed and used in accordance with the instructions, may cause harmful interference to radio communications. However, there is no guarantee that interference will not occur in a particular installation. If this equipment does cause harmful interference to radio or television reception, which can be determined by turning the equipment off and on, the user is encouraged to try to correct the interference by one or more of the following measures:

1. Reorient or relocate the receiving antenna.
2. Increase the separation between the equipment and receiver.
3. Connect the equipment into an outlet on a circuit different from that to which the receiver is connected.
4. Consult the dealer or an experienced radio or TV technician for help.

The following importer is the responsible party

(for FCC matters only):

Company Name

Steelcase

Telephone

+1-800-333-9939

Notice to Canadian Users

This device complies with Industry Canada license ICES-005. Operation is subject to the following two conditions: (1) This device may not cause interference, and (2) This device must accept any interference, including interference that may cause undesired operation of the device.

CAN ICES-005 (B) | NMB-005 (B)



Indoor use only.



This symbol indicates that this product shall not be treated as household waste. Instead it shall be handed over to the applicable collection point for the recycling of electrical and electronic equipment.

For more information pertaining to the disposal or recycling of the product for responsible management of electronic waste at the end of the product's useful life, visit: <https://www.steelcase.com>

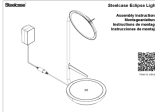
Steelcase®

© 2023 Steelcase Inc.

Grand Rapids, MI 49501 U.S.A.

Doc # 000000 Rev A

Documents / Resources

	<p>Steelcase WCECLIPSE Eclipse Light [pdf] Instruction Manual WCECLIPSE Eclipse Light, WCECLIPSE, Eclipse Light, Light</p>
---	--

References

- [S Steelcase - Office Furniture Solutions, Education & Healthcare Furniture](#)
- [S Steelcase - Office Furniture Solutions, Education & Healthcare Furniture](#)
- [S Dienstleistungen \(Services\) rund um Ihr Arbeitszimmer & Büro Design - Steelcase](#)
- [S Office Services - Steelcase](#)
- [S Services - Steelcase](#)
- [User Manual](#)