

Stealthbox SB-D-TRKCTR-12W3v3 Car Audio



Stealthbox SB-D-TRKCTR-12W3v3 Car Audio Installation Guide

[Home](#) » [Stealthbox](#) » [Stealthbox SB-D-TRKCTR-12W3v3 Car Audio Installation Guide](#) 

Contents

- [1 Stealthbox SB-D-TRKCTR-12W3v3 Car Audio](#)
- [2 Specifications](#)
- [3 Product Usage Instructions](#)
- [4 INSTALLATION INSTRUCTION](#)
- [5 INCLUDED HARDWARE](#)
- [6 SPECIFICATIONS](#)
- [7 FAQ](#)
- [8 Documents / Resources](#)
 - [8.1 References](#)
- [9 Related Posts](#)

Stealthbox®

Stealthbox SB-D-TRKCTR-12W3v3 Car Audio



Specifications

- **Enclosure Type:** Acoustic Suspension (sealed)
- **Driver Type:** 12W3v3-2
- **Nominal Impedance:** 2 ohms
- **Continuous Power Handling:** 500 Watts

Product Usage Instructions

- **Installation Difficulty:** 25 out of 100
- **Estimated Time:** 1-2 hours

Thank you for choosing a JL Audio Stealthbox® for your automotive sound system. With proper installation, your new vehicle-specific enclosed subwoofer system will deliver years of listening pleasure.

We strongly recommend that you have your new Stealthbox® installed by your authorized JL Audio dealer. The installation professionals employed by your dealer have the necessary tools and experience to disassemble and reassemble your vehicle properly. Also, keep in mind that your warranty coverage extends to 1 year if your system is installed or approved by your authorized JL Audio dealer. If you prefer to perform your installation, please read this installation guide completely before beginning the process.

IMPORTANT

If you choose to perform the installation yourself, it is vital that the Stealthbox® be properly mounted to the vehicle according to these instructions. Failure to mount the enclosure properly presents two problems:

1. The sub-bass performance will suffer due to the movement of the enclosure caused by the force exerted by the woofer(s).
2. A loose enclosure presents a serious safety hazard in the event of a collision or sudden deceleration.

INSTALLATION INSTRUCTION

• STEP 1

- This Stealthbox® is not designed to be a passenger seat. We do not recommend it to be used as such.
- If you are dealing with a 1997-2002 Ram, there will be a small black box bolted to the underside of the center seat section.
- This is the seat belt retracting sensor. This must be handled with care, see STEP 7.

• STEP 2

- Slide the seat belts out of the elastic loops.
- Using a 13mm socket, unbolt the center seat section from the mounting legs.
- Remove the center seat section from the truck.

• STEP 3

- With the center seat section upside down, unlatch the black plastic strips from the metal bars.
- With a 8mm socket, unbolt the upper arm rest section from the bottom cushion section. Pull the upper section's arms through the bottom section's upholstery. Use care not to rip the upholstery.
- Fully remove the upholstery from the bottom cushion section.
- Place the removed upholstery onto the Stealthbox®.

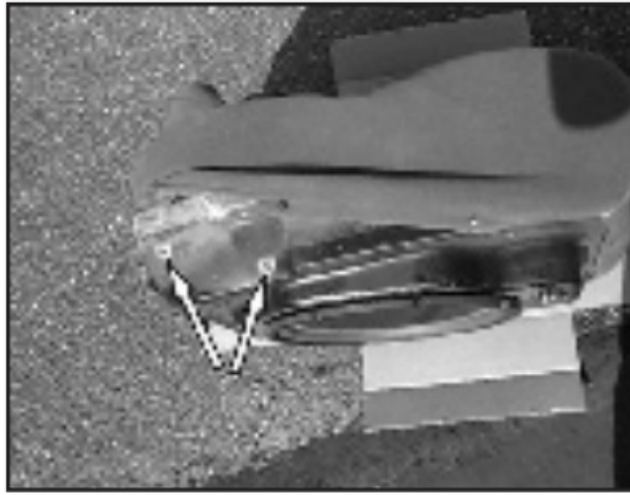


- **STEP 5**

- In reverse of STEP 3.
- Slide the upper armrest section's arms through the cutouts in the upholstery that is wrapped around the Stealthbox®.
- With an 8mm socket and the OEM bolts, secure the upper armrest section to the bottom cushion section.

- **STEP 6**

- Fold the four black plastic strips under the upholstery.
- This upholstery/strip fold is to be mounted to the Stealthbox®.
- Using a 1/8-inch drill bit and drill. Drill a pair of pilot holes into the Stealthbox®. The pilot holes are to be in line with each of the upholstery/strip folds.
- Secure each fold with two of the supplied screws to the Stealthbox®.



• STEP 7

- If this truck has the seat belt retracting sensor (black box), secure this sensor to the driver's seat mounting leg. Make sure that the sensor is positioned exactly the same way it was positioned as factory installed. If not, the seat belts will not function correctly.
- Run speaker wire from the amplifier's location to the Stealthbox® location and check for proper operation of the woofer.

• STEP 8

- Place the Stealthbox® into the mounting location. Secure the Stealthbox with the factory bolts that were removed in
- STEP 2. DO NOT OVER-TIGHTEN THE BOLTS.
- Slide the seat belts back through the elastic loops.

CONGRATULATIONS

- You have completed the installation for this model!
- Please refer to the Power Recommendation section for an amplifier recommendation and basic set-up help.

INCLUDED HARDWARE

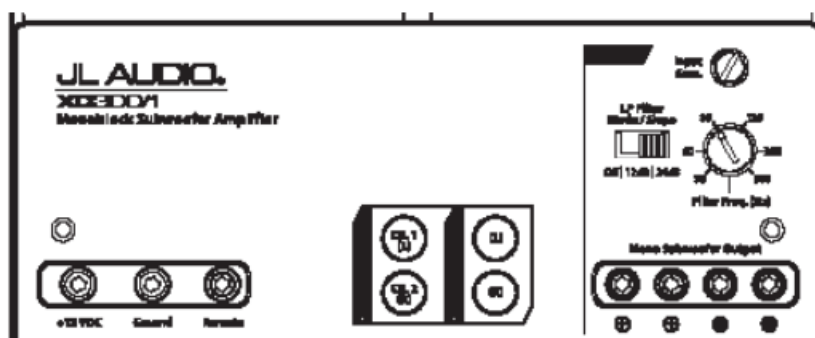
(8) #8 x 1/2-inch Wafer Head Screws

SPECIFICATIONS

- **Enclosure Type:** Acoustic Suspension (sealed)
- **Driver Type:** 12W3v3-2
- **Nominal Impedance:** 2 ohms
- **Continuous Power Handling:** 500 Watts

POWER RECOMMENDATION

- JL Audio recommends using a high-quality amplifier such as the JL Audio XD300/1.
- The diagram below shows the recommended crossover settings for the XD300/1 when being used to power your Stealthbox



The JL Audio XD300/1 is a very versatile audio component. Please consult the owner's manual for even more detailed information about installing and tuning this amplifier.

MID/HIGH FREQUENCY DRIVER FITMENT

A variety of JL Audio coaxial and component systems will fit in the factory speaker locations of your vehicle.

- **Front Speaker Size / Location:** 6×9 / Front Doors
- **Fits JL Audio Models:** TR690-TXi, C2-690tx
- **Rear Speaker Size / Location:** 5.25-inch / Rear Panels
- **Fits JL Audio Models:** TR525-CXi, C2-525x, C3-525, C5-525x



FAQ

(Frequently Asked Questions)

- **Q: Can I install this product myself?**
 - A: Yes, you can perform your installation by following the instructions provided in this installation guide.


- **Q: Is it necessary to secure the seat belt retracting sensor?**
 - A: Yes, if your truck has the seat belt retracting sensor (black box), it must be secured to the driver's seat mounting leg to ensure correct functioning of the seat belts.
- **Q: What is the power recommendation for this product?**
 - A: The JL Audio XD300/1 amplifier is recommended for this product. Please consult the owner's manual for more detailed information.
- **Q: What other JL Audio speaker models can be used in my vehicle?**
 - A: A variety of JL Audio coaxial and component systems can fit in the factory speaker locations of your vehicle. Please refer to the Mid/High Frequency Driver Fitment section for more details.
- **Q: Where can I find more information or support?**
 - A: For more information or support, you can visit our website at www.jlaudio.com or contact us at (954) 443-1100.

(954) 443-1100

www.jlaudio.com

All specifications are subject to change without notice. "JL Audio®" and the JL Audio logo, "Stealthbox" and the Stealthbox logo are registered trademarks of JL Audio, Inc. "Ahead of the Curve" and its respective logo is a trademark of JL Audio, Inc. JLA-SKU# 011104 – 09.20.2016 • Printed in USA • ©2016 JL Audio, Inc. For more detailed information please visit us online at www.jlaudio.com.
10369 NORTH COMMERCE PARKWAY • MIRAMAR, FLORIDA • 33025

Documents / Resources

	<p>Stealthbox SB-D-TRKCTR-12W3v3 Car Audio [pdf] Installation Guide SB-D-TRKCTR-12W3v3, SB-D-TRKCTR-12W3v3 Car Audio, Car Audio, Audio</p>
-------------------------------------------------------------------------------------	----------------------------------------------------------------------------------------------------------------------------------------------------------------

References

-  Manual-Hub.com - Free PDF manuals!
- [User Manual](#)

[Manuals+.](#) [Privacy Policy](#)

This website is an independent publication and is neither affiliated with nor endorsed by any of the trademark owners. The "Bluetooth®" word mark and logos are registered trademarks owned by Bluetooth SIG, Inc. The "Wi-Fi®" word mark and logos are registered trademarks owned by the Wi-Fi Alliance. Any use of these marks on this website does not imply any affiliation with or endorsement.