



STEALTH UGS Series X S Charging Dock and Stand Set Up User Guide

[Home](#) » [STEALTH](#) » STEALTH UGS Series X S Charging Dock and Stand Set Up User Guide 

STEALTH

QUICK START GUIDE
CHARGING DOCK &
STAND SET-UP

Contents

- 1 UGS Series X S Charging Dock and Stand Set Up
- 2 INSTALLATION AND USE – CHARGING DOCK (CHARGE TO PLAY)
- 3 IMPORTANT SAFEGUARDS & PRECAUTIONS
- 4 BATTERY CARE
- 5 Documents / Resources
 - 5.1 References
- 6 Related Posts

UGS Series X S Charging Dock and Stand Set Up



[STEALTHGAMING.NET/SUPPORT](https://stealthgaming.net/support)



Not recommended for children under 6 years of age. Please retain this Instruction Manual for future reference. Due to the company's policy of constant improvement and technical refinement, the company reserve the right to alter the specification. This product is not sponsored, endorsed or approved by Microsoft. XBOX ONE™, XBOX ONE S™, and XBOX ONE X™, are registered trademarks of Microsoft Co. Ltd. Manufactured by ABP Technology Ltd. Bolton, BL2 1BX. MADE IN CHINA. Please keep this instruction manual for future reference. If you require any help or assistance please contact the Helpline.

WARRANTY

This product is guaranteed for a period of one year from the date of purchase. During this period if there is a defect due to faulty materials, or workmanship the retailer from whom you purchased it will replace it with the same or a similar model on production of your purchase receipt or proof of purchase. This guarantee does not cover defects arising from accidental damage, misuse or wear and tear, and is available only to the original purchaser of the product. This does not affect your statutory rights.

INSTALLATION AND USE – CHARGING DOCK (CHARGE TO PLAY)

1. Remove the existing battery cover, along with any existing batteries from your controller and keep them in a safe place
2. Fit the supplied battery pack into your controller, it will only fit one way and will click into place
3. Using the USB Premium Braided Play & Charge Cable, insert the smaller end into the USB C slot on the back of the Charging Dock and the other end into a free USB port on your console
4. Position your controller onto the charging dock to begin charging (SEE IMAGES OVERLEAF)
5. Switch on your console
6. The charging LED indicators on the dock will start to FLASH GREEN
7. When the battery packs are fully charged the LED's will glow SOLID GREEN
8. Once fully charged remove the controller from the charging dock (Do not charge the battery for longer than 8 hours)

INSTALLATION AND USE – PREMIUM BRAIDED PLAY & CHARGE CABLE (PLAY & CHARGE)

If you have forgotten to charge your controllers on the Charging Dock, an alternative charging solution can be to use the Premium Braided Play & Charge Cable for instant Play & Charge. Follow the steps below:

1. Using the USB Premium Braided Play & Charge Cable, insert the smaller end into the USB C slot on the Battery Pack and the other end into a free USB port on your console
2. Switch on your console and charging will begin automatically, the charging LED on the battery pack will start to FLASH
GREEN
3. When the battery pack is fully charged the LED will glow SOLID GREEN
4. Once the battery pack is fully charge remove the USB charging cable from your controller (Do not charge the battery for longer than 8 hours)

NOTE: You can charge the Rechargeable Battery Pack included while installed or not installed in the XBOX Wireless Controller.

For set-up without installation, simply follow steps 1 and 2.

IMPORTANT NOTE

- Once the battery pack is fully charged disconnect the USB cable from your Charging Dock/controller and console
- Do not leave the battery on charge for longer than 8 hours, we do not recommend leaving the battery on charge overnight or while unattended
- Do not attempt to charge any other battery pack or device using the USB Charging Cable or Charging Dock
- Do not use any other Charging Dock or USB Charging Cable other than the one supplied
- Do not charge your Battery Pack on flammable surfaces. i.e. Couches, mattresses etc
- Ensure plenty of ventilation

IMPORTANT SAFEGUARDS & PRECAUTIONS

- Children should always be supervised when using or fitting this product
- The Charging Dock, Battery Pack and Cable are for indoor use only
- Do not expose to dust, direct sunlight, wet weather conditions, high humidity, high temperatures or mechanical shock
- Avoid any unnecessary strain of the USB cable
- Never carry the unit by the USB cable
- Do not use if the Charging Dock, Battery Pack or USB cable is damaged
- During use, the Battery Pack may become warm. This is quite normal and there is no need for concern
- Do not short out the battery pack or charging terminals
- Do not disassemble; there are no serviceable parts inside
- For external cleaning, use a soft, clean, damp cloth only. Use of detergents may damage the cabinet finish

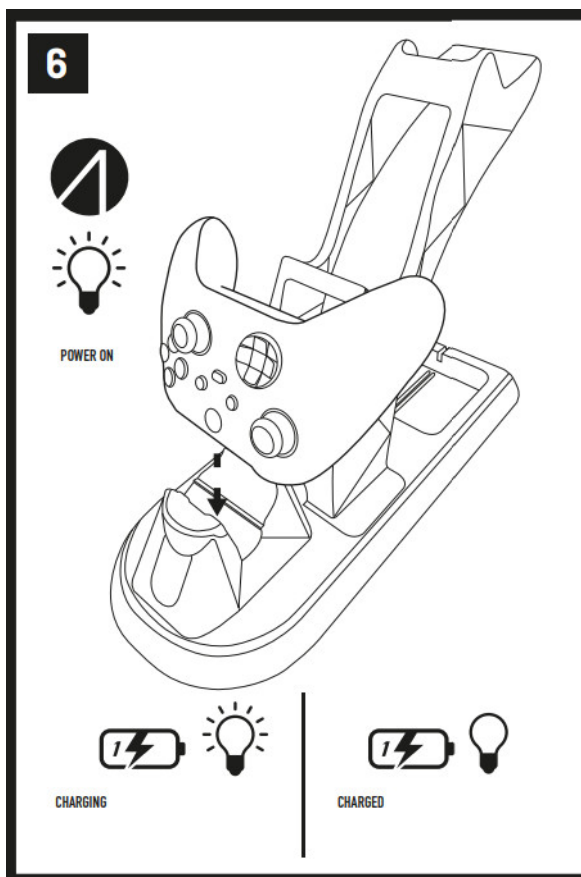
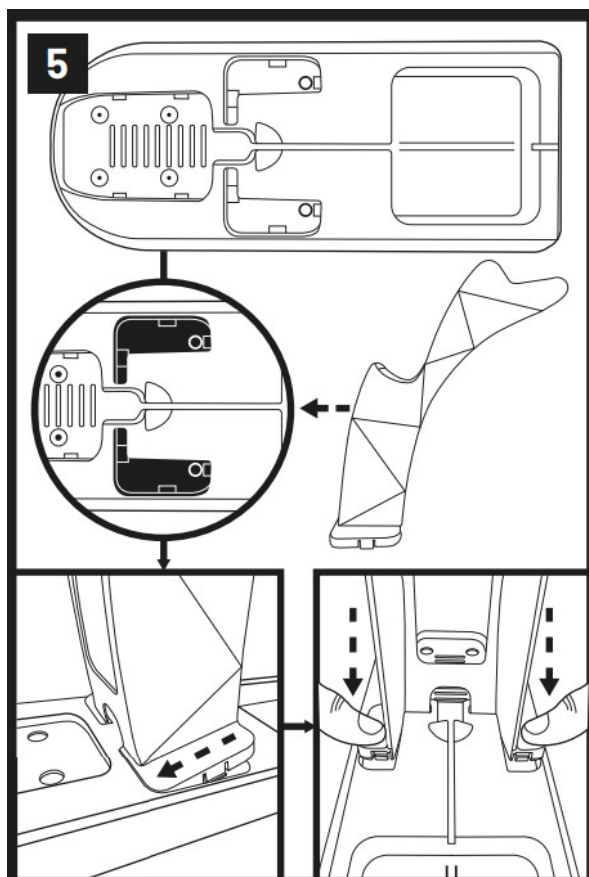
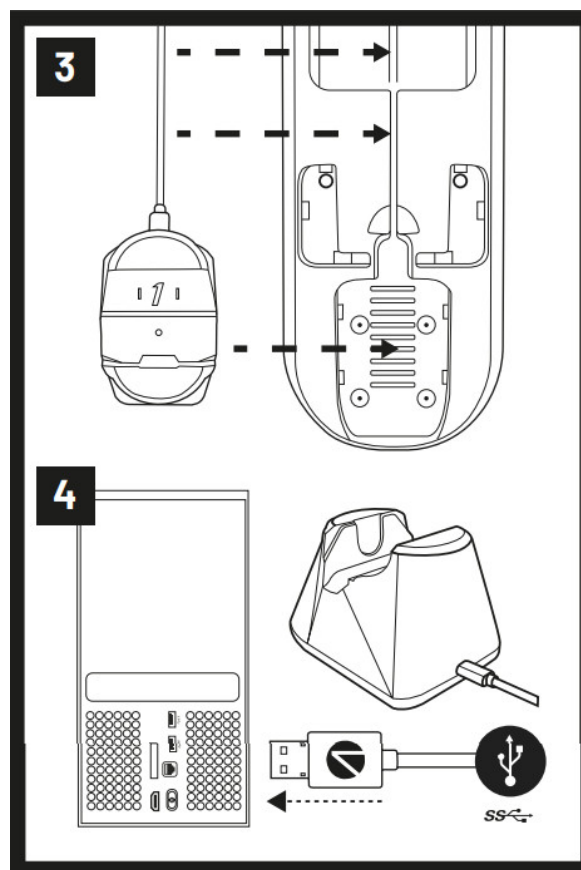
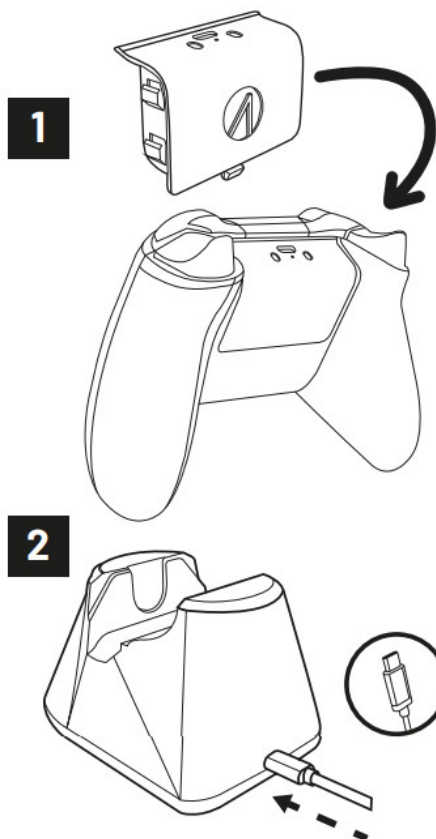
BATTERY CARE

- Once the battery is fully charged disconnect the USB charging cable from your Charging Dock or controller
- Do not attempt to charge any other battery pack or device using the USB charging cable
- Ensure correct fitting of the battery pack
- Do not leave the battery on charge for longer than 8 hours
- We do not recommend leaving the battery on charge overnight or while unattended
- When the equipment is not being used for a prolonged period of time, the battery pack should be removed
- Never dispose of batteries in fire, as this can cause them to explode
- The battery pack is only to be fitted, removed and charged under adult supervision
- Non-rechargeable batteries are not to be recharged
- Do not short out the battery or charging terminals or carry batteries in your pocket
- The supply terminals are not to be short-circuited

RECYCLING



Where you see this symbol on any of our electrical products, batteries or packaging, it indicates that the relevant electrical product or battery should not be disposed of as general household waste in the EU or Turkey. To ensure the correct waste treatment of the product and battery, please dispose of them in accordance with any applicable local laws or requirements for disposal of electrical equipment/batteries. In so doing, you will help to conserve natural resources and improve standards of environmental protection in treatment and disposal of electrical waste. The recycling and processing of Waste Electrical and Electronic Equipment will make a significant contribution towards helping protect the environment by reducing landfill waste.



HAVING TROUBLE SETTING UP?
 WE CAN HELP!
 TECHNICAL SUPPORT
 QUESTIONS / SET UP / NOT WORKING?
ONLINE: STEALTHGAMING.NET/SUPPORT
EMAIL: HELP@ABPTECH.CO.UK

LIVE CHAT: Speak to our Support Team by clicking the 'Chat With Us' box over at stealthgaming.net

MONDAY-THURSDAY 9AM to 5PM

FRIDAY 9AM to 4PM

HAPPY WITH YOUR PRODUCT?

DON'T FORGET TO LEAVE A REVIEW ON THE RETAILER
WEBSITE OR OUR FACEBOOK PAGE...

Documents / Resources



[STEALTH UGS Series X S Charging Dock and Stand Set Up](#) [pdf] User Guide

UGS Series X S, Charging Dock and Stand Set Up, UGS Series X S Charging Dock and Stand Set Up, Dock and Stand Set Up, Stand Set Up

References

- [Stealth Gaming Headset Online | Stealth Gaming Accessories | Stealthgaming.net](#)

[Manuals+](#).