




## Stealth Tint SSWTT-48-108 Transition Window Tint User Guide

[Home](#) » [Stealth Tint](#) » Stealth Tint SSWTT-48-108 Transition Window Tint User Guide 

Stealth Tint SSWTT-48-108 Transition Window Tint



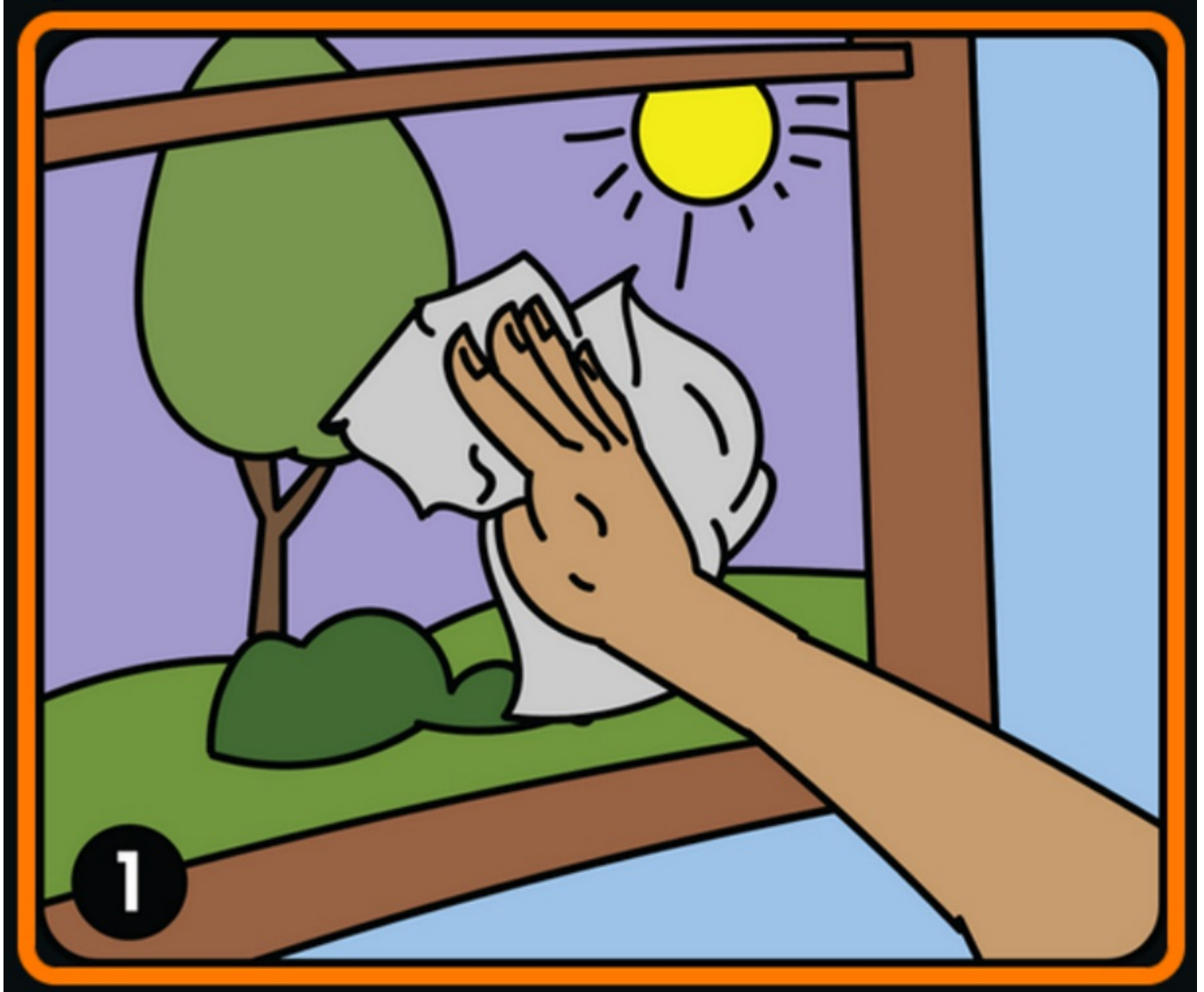
## Contents

- 1 How To Install
- 2 Customer Support
- 3 Documents / Resources
  - 3.1 References

## How To Install

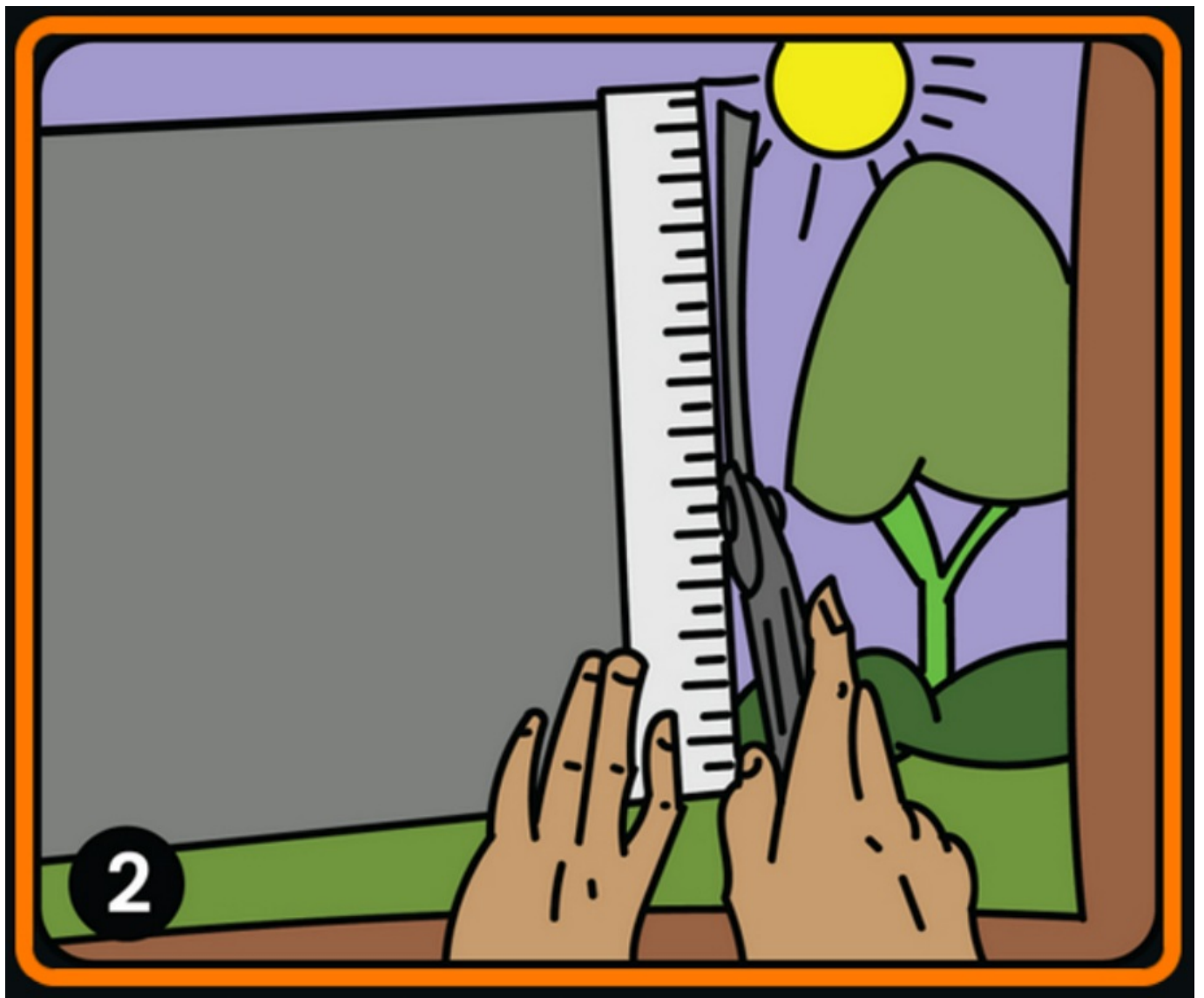
### Step 1:

#### Clean Glass



### Step 2:

Take Stealth Tint out of the box and trim to fit the glass surface using a razor knife

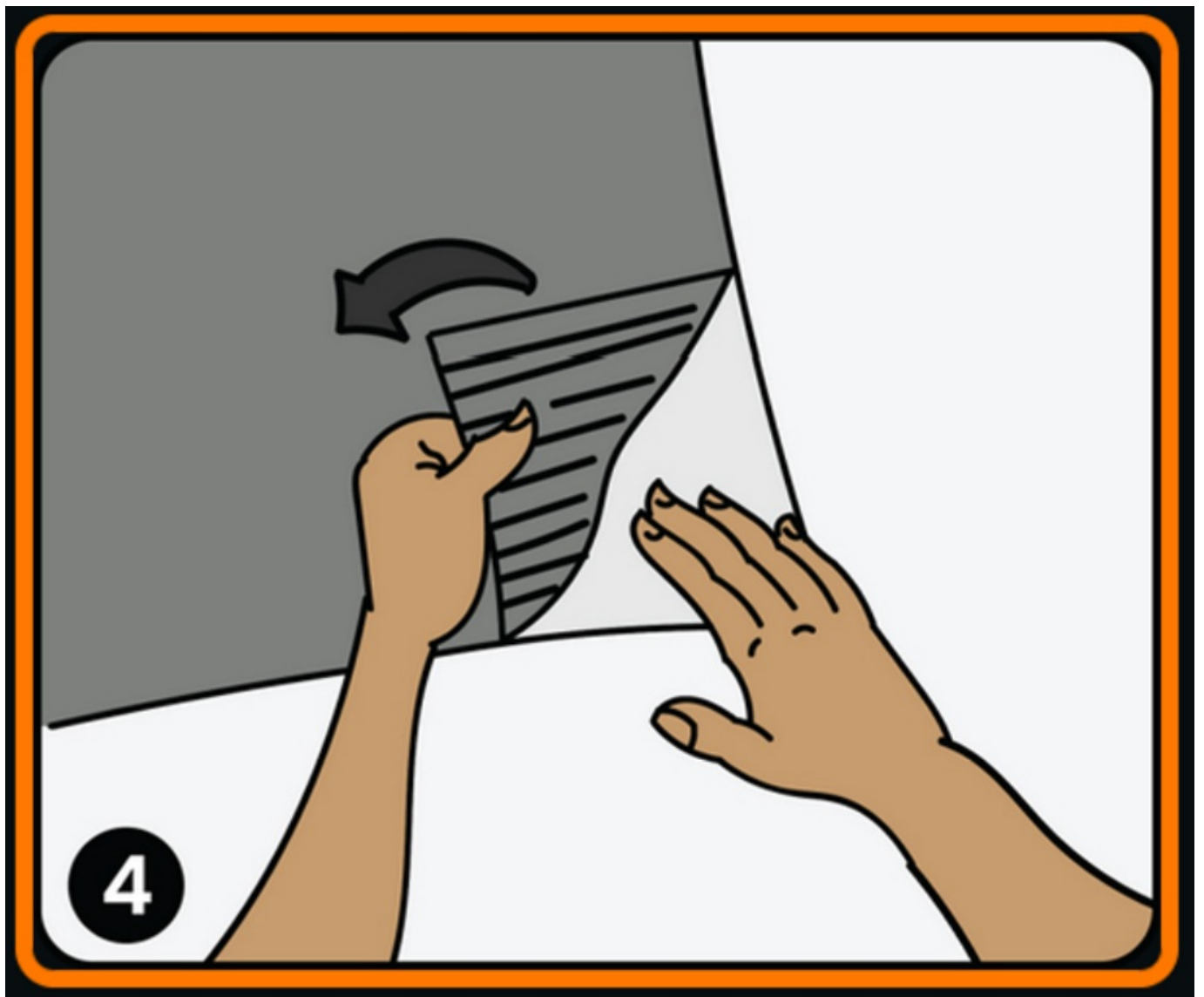


Step 3 :  
Wet glass with included install solution

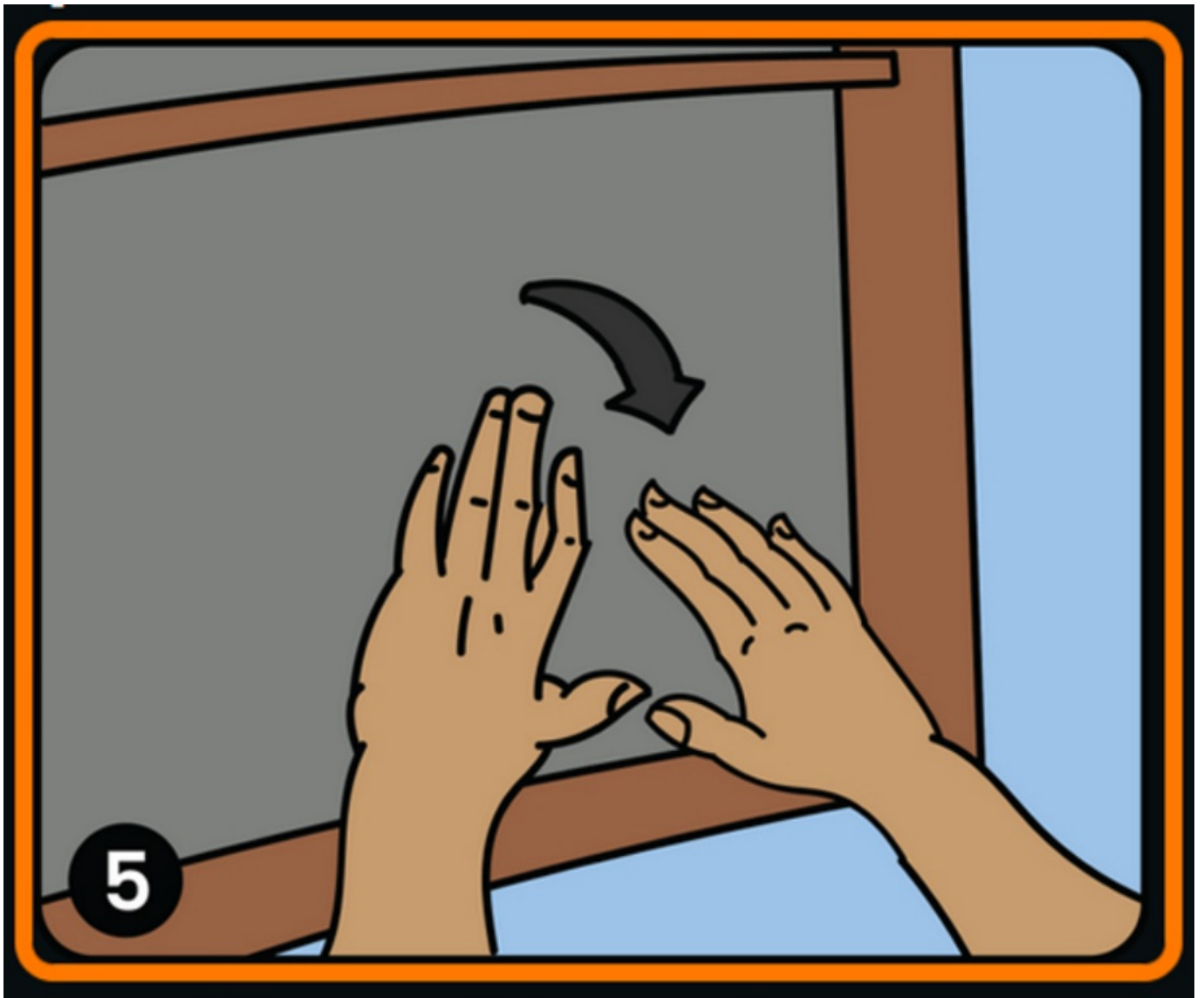


**Step 4:**

Separate the release liner from the adhesive side of the film using tape pull tab

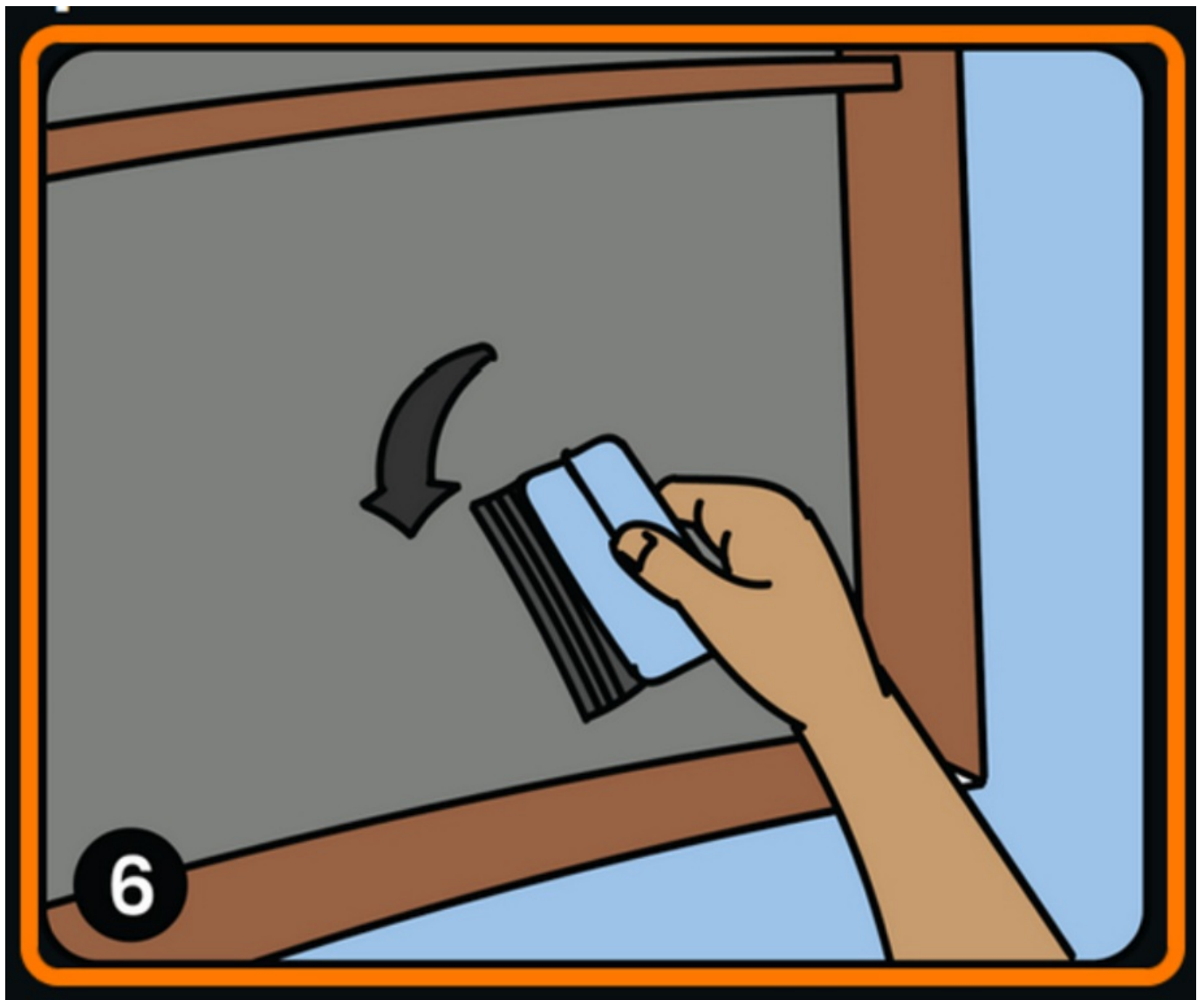


**Step 5:**  
Place film with adhesive side on wet glass and align for final placement



**Step 6:**  
**Squeegee excess liquid from behind film removing all air bubbles with included Hard Card**





Customer Support



[info@stealthtint.com](mailto:info@stealthtint.com)



+1 (844) 785 – 8468

[www.stealthtint.com](http://www.stealthtint.com)



**StealthTint®**

---

## Documents / Resources



[Stealth Tint SSWTT-48-108 Transition Window Tint](#) [pdf] User Guide  
SSWTT-48-108 Transition Window Tint, SSWTT-48-108, Transition Window Tint, Window Tint, Tint

## References

- [User Manual](#)

[Manuals+](#), [Privacy Policy](#)

This website is an independent publication and is neither affiliated with nor endorsed by any of the trademark owners. The "Bluetooth®" word mark and logos are registered trademarks owned by Bluetooth SIG, Inc. The "Wi-Fi®" word mark and logos are registered trademarks owned by the Wi-Fi Alliance. Any use of these marks on this website does not imply any affiliation with or endorsement.