

static P239.212 Manual Updated WEEE Instruction Manual

Contents

[1 Emergency light with hammer](#)

[1.1 Features:](#)

[1.2 Instructions for use](#)

[1.3 Technical data](#)

[2 Documents / Resources](#)

[2.1 References](#)

[3 Related Posts](#)

Emergency light with hammer

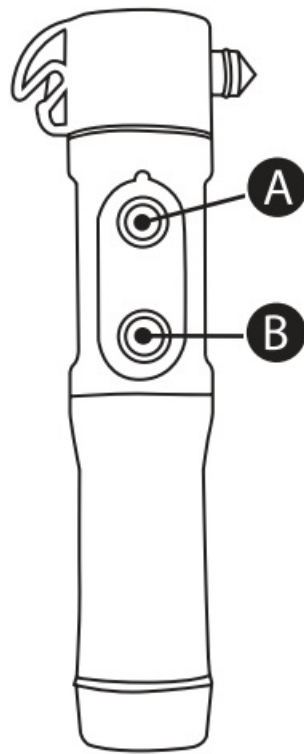


XD Connects B.V

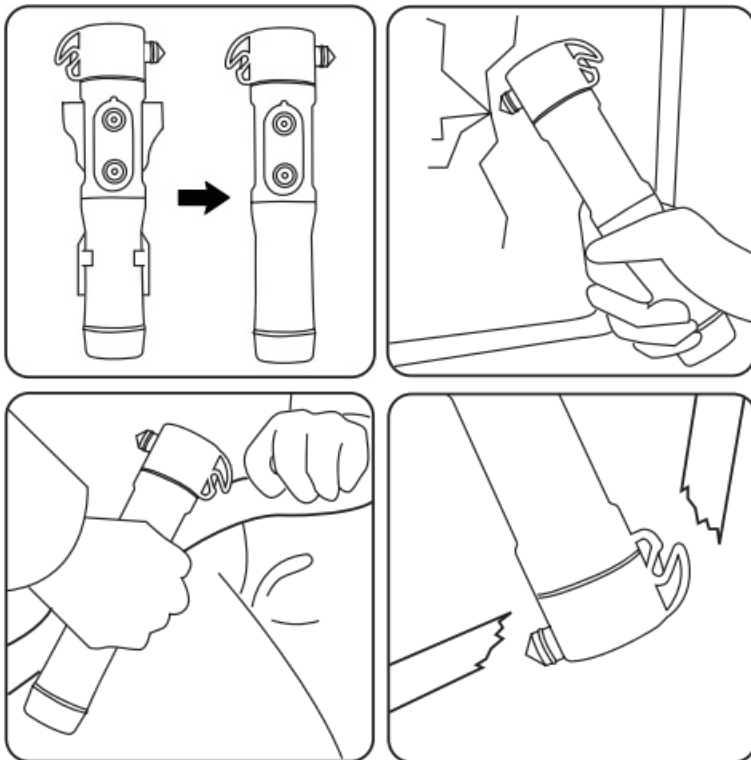
Lange Kleiweg 6-28
2288 GK Rijswijk, The Netherlands

1f, iCentrum, Holt Street,
Birmingham, B7 4BP, England





- A. Beacon
- B. Flashlight



emergency light with hammer

Features:

- This car emergency escape tool aids in emergency situations such as traffic accidents.
- The hammer breaks windows
- The cutter easily cuts through seat belts
- The red blinking LED light is visible from 200 meters.

- The magnetic base allows for hands free use of the flashlight when attached to a hood or car door.
- The flashlight is powerful and bright
- Compact and light weight

Instructions for use

Flashlight:

Take the plastic isolation out from between the batteries and close the lid tightly.

Press the flashlight button to illuminate the torch.

Press the beacon button to have the 9 LEDs blink.

Note

- This product has a magnet inside. Please do not place it near metal or objects that may be disturbed by a magnet (e.g. credit cards)
- Do not look into the LED light directly, this might injure your eyes.
- This product should be placed in a car. Please do not carry it with you
- This product is water resistant, but please do not use it in the water
- Take the batteries out when the item is not in use and re-install when needed

Technical data

Power supply: 2 AA batteries

LED: 9 red-lighted LED, 6000-6500mcd 1 white LED, 80-90LM



The crossed-out wheeled bin symbol indicates that the item should be disposed of separately from household waste. The item should be handed in for recycling in accordance with local environmental regulations for waste disposal. By separating a marked item from household waste, you will help reduce the volume of waste sent to incinerators or land-fill and minimize any potential negative impact on human health and the environment.

Documents / Resources



[static P239.212 Manual Updated WEEE](#) [pdf] Instruction Manual
P239.212 Manual Updated WEEE, P239.212, Manual Updated WEEE, Updated WEEE, WEEE

References

- [User Manual](#)

Manuals+, Privacy Policy

This website is an independent publication and is neither affiliated with nor endorsed by any of the trademark owners. The "Bluetooth®" word mark and logos are registered trademarks owned by Bluetooth SIG, Inc. The "Wi-Fi®" word mark and logos are registered trademarks owned by the Wi-Fi Alliance. Any use of these marks on this website does not imply any affiliation with or endorsement.