


STARTUP A2 Multi Function Jump Starter User Manual




Contents


- [1 STARTUP A2 Multi Function Jump Starter User Manual](#)
- [2 1. Functional diagram](#)
- [3 Technical parameters](#)
- [4 Car start steps](#)
- [5 4. Function key introduction](#)
- [6 5. Description of charge and discharge](#)
- [7 6. Toxic and Harmful Substances](#)
- [8 7. Warning](#)
- [9 8. Maintenance tips](#)
- [10 9.0 Warranty statement](#)
- [11 Documents / Resources](#)
 - [11.1 References](#)

STARTUP A2 Multi Function Jump Starter User Manual

**DANGER**



Please read the user manual carefully before using this product, otherwise the following consequences may occur: electric shock, explosion, fire, resulting in personal injury or property loss.



Get an electric Shock. The product is an electrical device that shocks and causes serious injury. Don't cut the power cords. Don't get immersed in water or wet.



1. Functional diagram



- | | |
|-------------------|--------------------|
| 1.Compass | 2.Indicator Light |
| 3.Functions Key | 4.Emergency Lights |
| 5.Charging Port | 6.Start Port |
| 7.USB Output Port | |

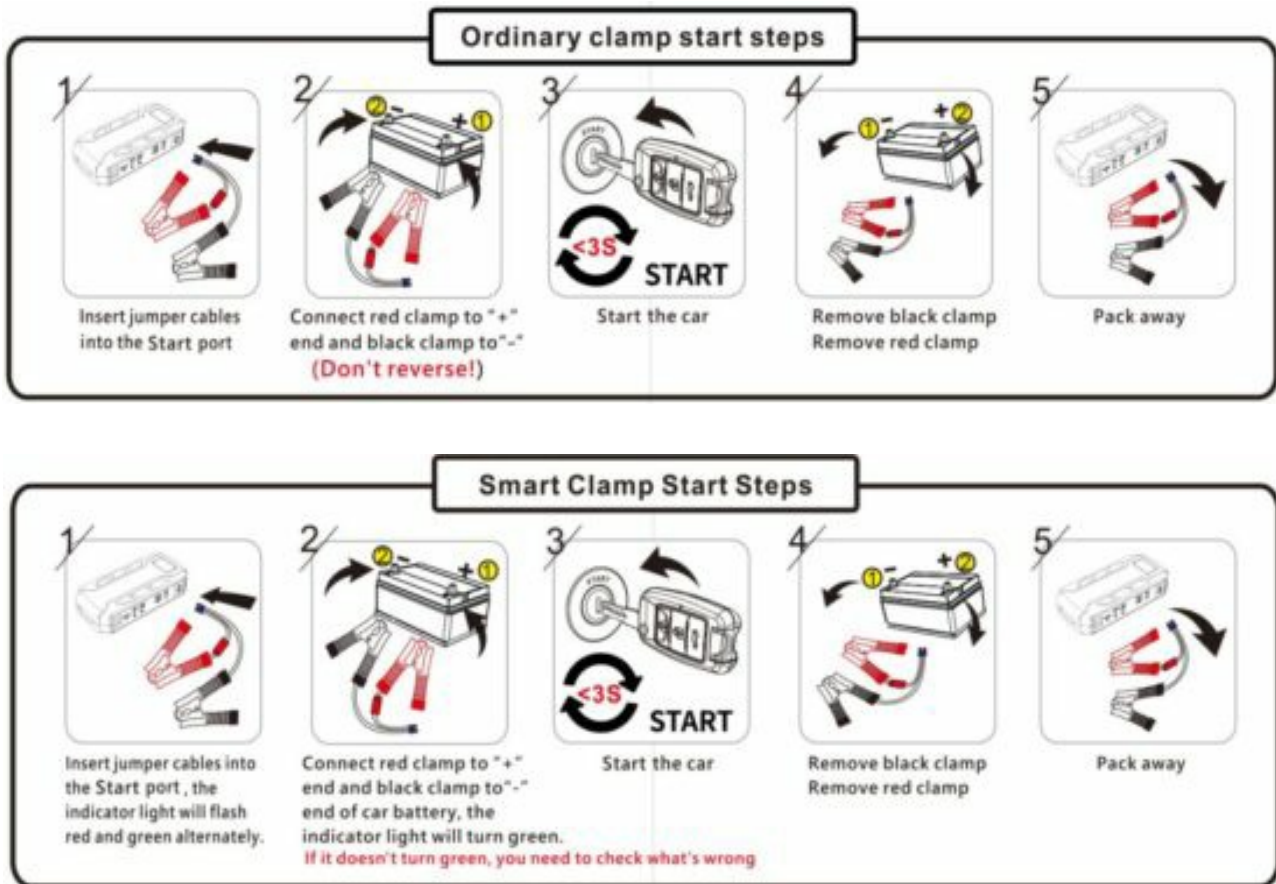
Technical parameters

Model: A2	Applicable models: 12V Car
Size: 160*80*38mm	Starting curent: 400A/600A/800A
Input: 5V/9V $\overline{=}$ 2A	Peak current: 1000A/1500A/2000A
USB Port: 5V $\overline{=}$ 2A	Applicable temperature: -30~65℃

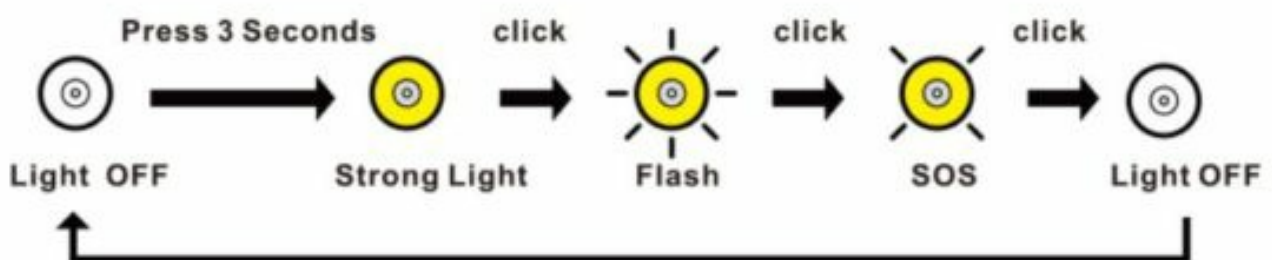
Car start steps



1. Please clean the battery positive and negative poles of dirt first!
2. The cable plug should be firmly inserted into the start port.
3. Do not mistake positive and negative!
4. The metal surface that the dip engages is as large as possible.

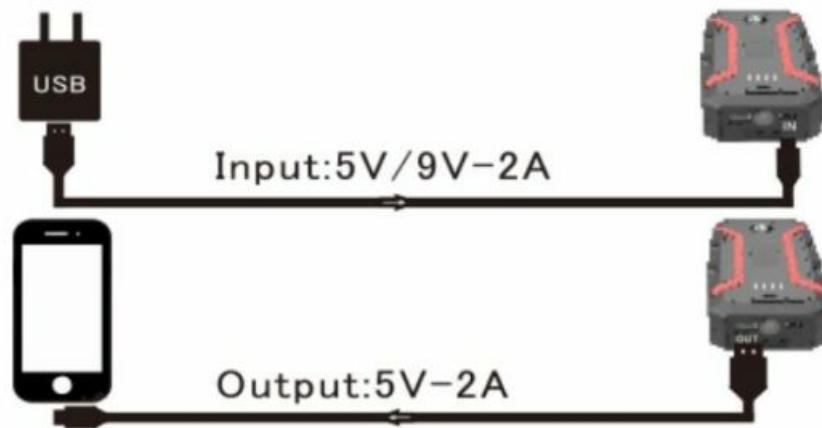


4. Function key introduction



5. Description of charge and discharge

When charging, be sure to use a regular charger that matches its parameters. Do not use inferior charger to charge, otherwise safety accidents may occur. Please do not connect the over power products when outputting USB.



6. Toxic and Harmful Substances

ITEM	Composition and amount of toxic and harmful substances									
	Pb	Hg	Cd	Cr(VI)	PBB	PBDE	DEHP	DBP	BBP	DIBP
Main Unit	0	0	0	0	0	0	0	0	0	0
0:indicates all homogeneous materials'hazardous substance content are below the MCV limit specified in the standard (EU)2015/863.										

7. Warning

1. The emergency starting operation steps of the car cannot be reversed.
2. In case of failure, please contact the dealer for handling. It is forbidden to disassemble the main machine without authorization; otherwise safety accidents may be caused.
3. The positive and negative poles of the power supply are prohibited from butt joint, reverse connection or indirect short circuit; otherwise safety accidents will be caused.
4. When using or charging, please stop using and consult customer service if any abnormal situation is found.
5. Please keep away from high temperature or humid environment, and do not place it in direct sunlight.
6. Children are prohibited from contacting this product to avoid safety accidents.
7. When charging the product, please put it in an empty place and have an adult look after it.
8. Please be sure to read the instructions and follow them. If you have any questions, please contact customer service at any time.
9. It is strictly prohibited to disassemble, puncture, refit, short-circuit the product or put it into water, fire or expose it to an environment with a temperature higher than 650Cto avoid damage to the product or other hazards.
10. Do not clamp battery clamps or connect the positive and negative electrodes directly or indirectly with conductors to avoid safety accidents.

8. Maintenance tips

1. This product can effectively deal with the car start-up failure caused by sporadic problems of car battery such as insufficient electricity and low temperature. However, it can only be used as emergency equipment and cannot replace the frequent use of car batteries or professional rescue. If the battery is aged, please replace the new battery in time after starting the car. After the car starts, please replenish the electricity in time for the next use.
2. Do not start the car at less than 60% of the power, otherwise it will easily lead to over discharge of the battery and damage to the battery core.
3. The best way to maintain the emergency starting power supply for automobiles is to use it lightly and charge it quickly. The greater the frequency and number of times it is used, the faster the battery will lose. The smaller the degree of deep discharge of the starting power supply, the longer the use time. If possible, avoid frequent full charge and discharge.
4. The start port is the direct output port of the battery. It is not protected and must not be directly connected to products without voltage protection. Otherwise, the products and power supply may be damaged.
5. When not in use for a long period of time(more than 15days), the battery has self-consumption, which requires regular check to maintain a certain amount of electricity and charge and discharge at least once a month. Otherwise, the power supply may be damaged.

9.0 Warranty statement

Within 12 months from the day after you sign for the product(within 1 months for accessories), if there is any product quality problem caused by non-human factors, you can enjoy free maintenance service upon confirmation by the manufacturer.

Main switch instructions:

1. Unauthorized maintenance, misuse, collision, negligence, abuse, excessive discharge, liquid intake, accident, alteration, incorrect use of non-product accessories or accessories that do not conform to parameters, or tearing up, altering labels and production dates.

Documents / Resources



[STARTUP A2 Multi Function Jump Starter](#) [pdf] User Manual
A2, A2 Multi Function Jump Starter, Multi Function Jump Starter, Function Jump Starter, Jump S
tarter, Starter

References

- [User Manual](#)