

StarTech USB32000SPT Network Card



StarTech USB32000SPT Network Card User Guide

[Home](#) » [Support](#) » StarTech USB32000SPT Network Card User Guide 

Contents

- [1 StarTech USB32000SPT Network Card](#)
- [2 FCC Compliance Statement](#)
- [3 Product Overview](#)
- [4 Introduction](#)
- [5 Installation](#)
 - [5.1 Driver Installation](#)
 - [5.2 Verifying Installation](#)
- [6 Specifications](#)
- [7 Technical Support](#)
- [8 Warranty Information](#)
- [9 Frequently Asked Questions](#)
- [10 References](#)
- [11 Related Posts](#)

StarTech.com

StarTech USB32000SPT Network Card



*actual product may vary from photos

USB 3.0 to Dual Gigabit Ethernet Adapter with USB Pass-Through Port

USB32000SPT

FCC Compliance Statement

This equipment has been tested and found to comply with the limits for a Class B digital device, under part 15 of the FCC Rules. These limits are designed to provide reasonable protection against harmful interference in a residential installation. This equipment generates, uses and can radiate radio frequency energy and, if not installed and used by the instructions, may cause harmful interference to radio communications. However, there is no guarantee that interference will not occur in a particular installation. If this equipment does cause harmful interference to radio or television reception, which can be determined by turning the equipment off and on, the user is encouraged to try to correct the interference by one or more of the following measures:

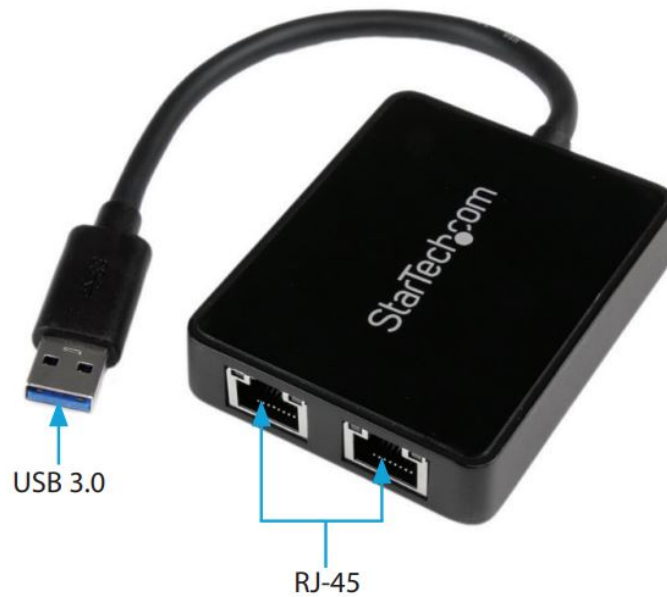
- Reorient or relocate the receiving antenna.
- Increase the separation between the equipment and the receiver.
- Connect the equipment to an outlet on a circuit different from that to which the receiver is connected.
- Consult the dealer or an experienced radio/TV technician for help.

Use of Trademarks, Registered Trademarks, and other Protected Names and Symbols

This manual may refer to trademarks, registered trademarks, and other protected names and/or symbols of third-party companies not related in any way to [StarTech.com](https://www.StarTech.com). Where they occur these references are for illustrative purposes only and do not represent an endorsement of a product or service by [StarTech.com](https://www.StarTech.com), or an endorsement of the product(s) to which this manual applies by the third-party company in question. Regardless of any direct acknowledgment elsewhere in the body of this document, [StarTech.com](https://www.StarTech.com) hereby acknowledges that all trademarks, registered trademarks, service marks, and other protected names and/or symbols contained in this manual and related documents are the property of their respective holders.

Product Overview

Front View



Rear View



Introduction

Packaging Contents

- 1 x USB 3.0 Dual Network Adapter
- 1 x Driver CD
- 1 x Instruction Manual

System Requirements

- Available USB port
- Windows® 8 (32/64bit), 7 (32/64), Vista(32/64), XP(32/64), Windows® Server 2008 R2, 2003(32/64), Mac OS 10.6 – 10.8, Linux kernel 2.6.25 ~ 3.5.0

Installation

Driver Installation

NOTE: The drivers for the USB Hub will be automatically installed by the host computer's operating system. Only the driver for the Ethernet port needs to be installed.

Windows / Mac

1. Insert the provided CD into your DVD/CD-ROM drive.
2. Open the contents of your CD/DVD drive and browse to x:\LAN\AX88179\ (where x: is your CD/DVD drive letter), then select the appropriate folder for your operating system.
3. For a Windows install, run the "AX88179_Setup.exe" application to launch the driver installation (For Mac OS, run the "MAC OS X\AX88179_178A.dmg" application).
4. Follow the on-screen instructions to complete the install.

NOTE: You may be prompted to restart at the end of the install

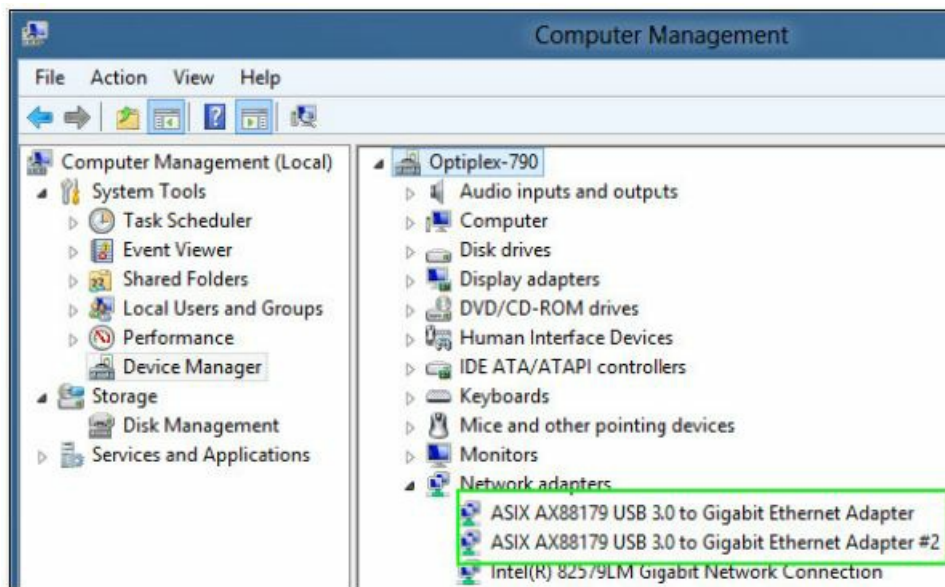
Hardware Installation

1. Connect the USB 3.0 Dual Network Adapter to an available USB port.
 - **NOTE:** If connected to a USB 2.0 host port, the pass-through port will only operate at USB 2.0 speeds and network performance may be limited.
2. The host computer's operating system should detect the hub immediately and automatically install the USB drivers.
3. Once installation is complete, USB 1.x/2.0/3.0 devices should be able to be connected to the hub and recognized.

Verifying Installation

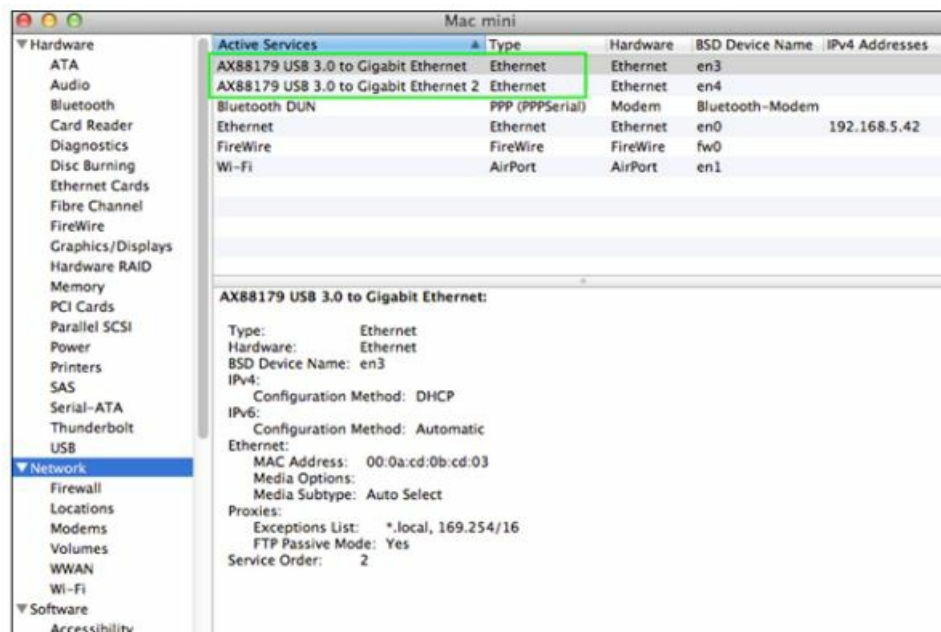
Windows

1. Open the Device Manager by right-clicking on Computer, and then select Manage. In the new Computer Management window, select Device Manager from the left window panel (For Windows 8, open the Control Panel and select Device Manager).
2. Expand the "Network adapters" section. On a successful install, you should see the following devices installed with no exclamation points or question marks.



Mac OS

1. Open the System Profiler by clicking the Apple symbol in the top left corner, selecting About this Mac, then select System Report
2. Expand the "Network" section. With the adapter connected, you should see the following devices in the list.



Specifications

- **Host Interface:** USB 3.0
- **Connectors:**
 - 2 x RJ-45 Female
 - 1 x USB 3.0 Type A Male
 - 1 x USB 3.0 Type A Female
- **LED Indicators:**
 - 2x 10/100 Link/Activity (Green)
 - 2x Gigabit Link/Activity (Amber)

- **Maximum Data Transfer Rate:**
 - USB 3.0: 5 Gbps
 - LAN: 2 Gbps (per port; Full-Duplex)
- **Supported Standards:**
 - IEEE802.3i
 - IEEE 802.3u
 - IEEE 802.3ab
 - IEEE 802.3az
- **Supported Network Link Speeds:** 10/100/1000 Mbps
- **Ethernet Full Duplex Support:** Yes
- **Auto MDIX:** Yes
- **Power:** USB-Powered
- **Enclosure Material:** Plastic
- **Operating Temperature:** 0°C to 50°C (32°F to 122°F)
- **Storage Temperature:** -20°C to 60°C (-4°F to 140°F)
- **Dimensions:** 263 x 87 x 34 mm
- **Humidity:** 5~85% RH
- **Weight:** 50g

Technical Support

- StarTech.com's lifetime technical support is an integral part of our commitment to providing industry-leading solutions. If you ever need help with your product, visit www.startech.com/support and access our comprehensive selection of online tools, documentation, and downloads.
- For the latest drivers/software, please visit www.startech.com/downloads

Warranty Information

- This product is backed by a two-year warranty.
- In addition, StarTech.com warrants its products against defects in materials and workmanship for the periods noted, following the initial date of purchase. During this period, the products may be returned for repair, or replacement with equivalent products at our discretion. The warranty covers parts and labor costs only.
- StarTech.com does not warrant its products from defects or damages arising from misuse, abuse, alteration, or normal wear and tear.

Limitation of Liability

In no event shall the liability of StarTech.com Ltd. and StarTech.com USA LLP (or their officers, directors, employees, or agents) for any damages (whether direct or indirect, special, punitive, incidental, consequential, or otherwise), loss of profits, loss of business, or any pecuniary loss, arising out of or related to the use of the product exceed the actual price paid for the product. Some states do not allow the exclusion or limitation of incidental or consequential damages. If such laws apply, the limitations or exclusions contained in this statement may not apply to you.

Hard-to-find made easy. At StarTech.com, that isn't a slogan.

It's a promise.

- [StarTech.com](https://www.startech.com) is your one-stop source for every connectivity part you need. From the latest technology to legacy products — and all the parts that bridge the old and new — we can help you find the parts that connect your solutions.
- We make it easy to locate the parts, and we quickly deliver them wherever they need to go. Just talk to one of our tech advisors or visit our website. You'll be connected to the products you need in no time.
- Visit www.startech.com for complete information on all [StarTech.com](https://www.startech.com) products and to access exclusive resources and time-saving tools.
- [StarTech.com](https://www.startech.com) is an ISO 9001 Registered manufacturer of connectivity and technology parts. [StarTech.com](https://www.startech.com) was founded in 1985 and has operations in the United States, Canada, the United Kingdom and Taiwan servicing a worldwide market.

Reviews

Share your experiences using [StarTech.com](https://www.startech.com) products, including product applications and setup, what you love about the products, and areas for improvement.

[StarTech.com](https://www.startech.com) Ltd.

- **Canada Address:**
 - 45 Artisans Crescent
 - London, Ontario
 - N5V 5E9
 - Canada
- **United Kingdom Address:**
 - Unit B, Pinnacle 15
 - Gowerton Road
 - Brackmills
 - Northampton
 - NN4 7BW
 - United Kingdom
- **U.S.A. Address:**
 - 4490 South Hamilton Road
 - Groveport, Ohio
 - 43125
 - U.S.A.
- **The Netherlands Address:**
 - Siriusdreef 17-27
 - 2132 WT
 - Hoofddorp
 - The Netherlands

Frequently Asked Questions

What is the StarTech USB32000SPT Network Card, and what does it do?

The StarTech USB32000SPT is a network card that provides additional network connectivity options to your computer via a USB 3.0 port.

How does the USB32000SPT Network Card connect to a computer?

The USB32000SPT Network Card connects to a computer through a USB 3.0 Type A Male connector.

What are the key features of the StarTech USB32000SPT Network Card?

This network card offers dual Gigabit Ethernet ports, a USB pass-through port, LED indicators, and support for various network link speeds.

Can the USB32000SPT Network Card be used with Mac computers?

Yes, it is compatible with Mac OS 10.6 - 10.8, in addition to Windows and Linux operating systems.

What is the maximum data transfer rate supported by the USB32000SPT Network Card?

The USB32000SPT supports USB 3.0 data transfer rates of up to 5 Gbps and LAN data rates of up to 2 Gbps per port.

Does the USB32000SPT Network Card support Full-Duplex Ethernet?

Yes, it supports Full-Duplex Ethernet for improved network performance.

What is the purpose of the USB pass-through port on the USB32000SPT Network Card?

The USB pass-through port allows you to connect USB devices to your computer while using the network card.

How is the USB32000SPT Network Card powered?

The USB32000SPT is USB-powered, so it draws power from the USB port on your computer.

Are LED indicators available on the USB32000SPT Network Card?

Yes, it features LED indicators for 10/100 Link/Activity (Green) and Gigabit Link/Activity (Amber) for each Ethernet port.

What are the supported network standards for the USB32000SPT Network Card?

It supports IEEE802.3i, IEEE 802.3u, IEEE 802.3ab, and IEEE 802.3az standards.

Is the USB32000SPT Network Card easy to install?

Yes, it is typically easy to install, with drivers provided on the included Driver CD.

Does the USB32000SPT Network Card require any additional power source or adapters?

No, it is powered directly through the USB 3.0 port, eliminating the need for external power sources or adapters.

Reference: [StarTech USB32000SPT Network Card User Guide-device.report](#)

References

- [User Manual](#)