




# StarTech USB31000SPTB USB 3.0 to Gigabit Ethernet Adapter Instruction Manual

[Home](#) » [Support](#) » StarTech USB31000SPTB USB 3.0 to Gigabit Ethernet Adapter Instruction Manual 

## Contents

- [1 StarTech USB31000SPTB USB 3.0 to Gigabit Ethernet Adapter](#)
- [2 FCC Compliance Statement](#)
- [3 Product Overview](#)
- [4 Introduction](#)
- [5 Packaging Contents](#)
- [6 System Requirements](#)
- [7 Installation](#)
- [8 Verifying Installation](#)
- [9 Specifications](#)
- [10 Technical Support](#)
- [11 Warranty Information](#)
- [12 FAQ's](#)
- [13 Related Posts](#)

StarTech.com

StarTech USB31000SPTB USB 3.0 to Gigabit Ethernet Adapter



## FCC Compliance Statement

This equipment has been tested and found to comply with the limits for a Class B digital device, pursuant to part 15 of the FCC Rules. These limits are designed to provide reasonable protection against harmful interference in a residential installation. This equipment generates, uses and can radiate radio frequency energy and, if not installed and used in accordance with the instructions, may cause harmful interference to radio communications. However, there is no guarantee that interference will not occur in a particular installation. If this equipment does cause harmful interference to radio or television reception, which can be determined by turning the equipment off and on, the user is encouraged to try to correct the interference by one or more of the following measures:

- Reorient or relocate the receiving antenna.
- Increase the separation between the equipment and receiver.
- Connect the equipment into an outlet on a circuit different from that to which the receiver is connected.
- Consult the dealer or an experienced radio/TV technician for help.

## Use of Trademarks, Registered Trademarks, and other Protected Names and Symbols

This manual may make reference to trademarks, registered trademarks, and other protected names and/or symbols of third-party companies not related in any way to [StarTech.com](http://StarTech.com). Where they occur these references are for illustrative purposes only and do not represent an endorsement of a product or service by [StarTech.com](http://StarTech.com), or an endorsement of the product(s) to which this manual applies by the third-party company in question. Regardless of any direct acknowledgment elsewhere in the body of this document, [StarTech.com](http://StarTech.com) hereby acknowledges that all trademarks, registered trademarks, service marks, and other protected names and/or symbols contained in this manual and related documents are the property of their respective holders.

## Product Overview

### Front View



#### Side View



## Introduction

The USB31000SPTB USB 3.0 to Gigabit Ethernet Adapter lets you add a Gigabit network port to your laptop or Ultrabook™ computer through a USB 3.0 port, and features an integrated USB 3.0 pass-through port that keeps your USB port available for use with other peripherals. Each RJ45 port supports 10/100/1000 Mbps Ethernet and is fully compatible with IEEE 802.3i/u/ab standards.

An ideal replacement LAN adapter or laptop accessory, this compact USB 3.0 NIC leverages the 5 Gbps speed of USB 3.0 to provide full gigabit bandwidth and also offers backward compatibility with USB 2.0 systems (speed limited by USB bus).

The adapter supports features such as IPv4/IPv6 packet Checksum Offload Engine (COE) and TCP large send offload to reduce the load on your CPU. Jumbo Frames, full-duplex operation with 802.3x flow control and VLAN tagging are also supported, making this an efficient and full-featured USB network adapter. Backed by a [StarTech.com](http://StarTech.com) 2-year warranty and free lifetime technical support.

## Packaging Contents

- 1 x USB 3.0 Network Adapter
- 1 x Driver CD
- 1 x Instruction Manual

## System Requirements

- Available USB port
- Windows® 8 (32/64bit), 7 (32/64), Vista(32/64), XP(32/64), Windows® Server 2008 R2, 2003(32/64), Mac OS

## Installation

### Hardware Installation

1. Connect the USB 3.0 Network Adapter to an available USB port.

**NOTE:** If connected to a USB 2.0 host port, the pass-through port will only operate at USB 2.0 speeds and network performance may be limited.

2. The host computer's operating system should detect the hub immediately and automatically install the USB drivers.
3. Once installation is complete, USB 1.x/2.0/3.0 devices should be able to be connected to the hub and recognized.

### Driver Installation

**NOTE:** The drivers for the USB Hub will be automatically installed by the host computer's operating system. Only the driver for the Ethernet port needs to be installed.

### Windows / Mac

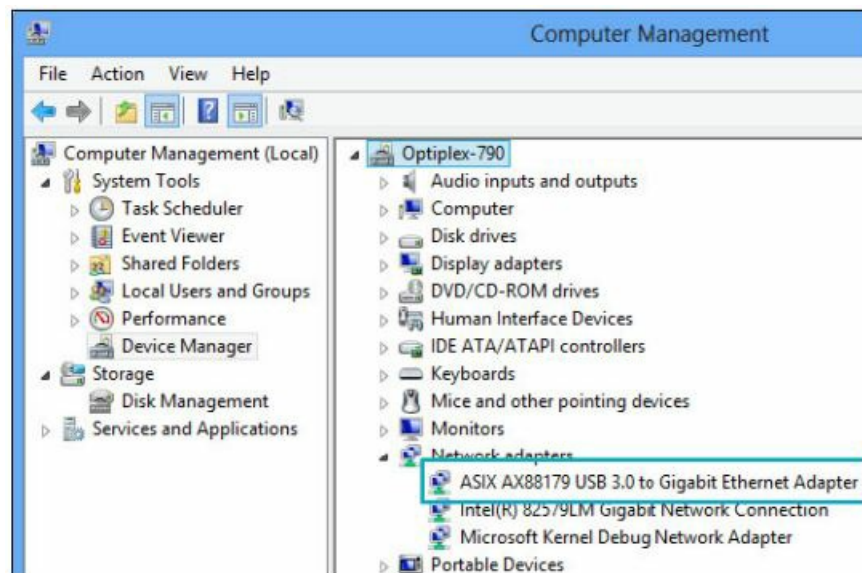
1. Insert the provided CD into your DVD/CD-ROM drive.
2. Open the contents of the CD/DVD drive that the CD is in and browse to the appropriate folder for your operating system.
3. Run the "Setup.exe" (Windows) application to launch the driver installation program (mount "AX88179\_178A.dmg" and run "AX88179\_178A.dmg" for Mac OS), and follow the on-screen instructions to complete the install

**NOTE:** You may be prompted to restart at the end of the install

## Verifying Installation

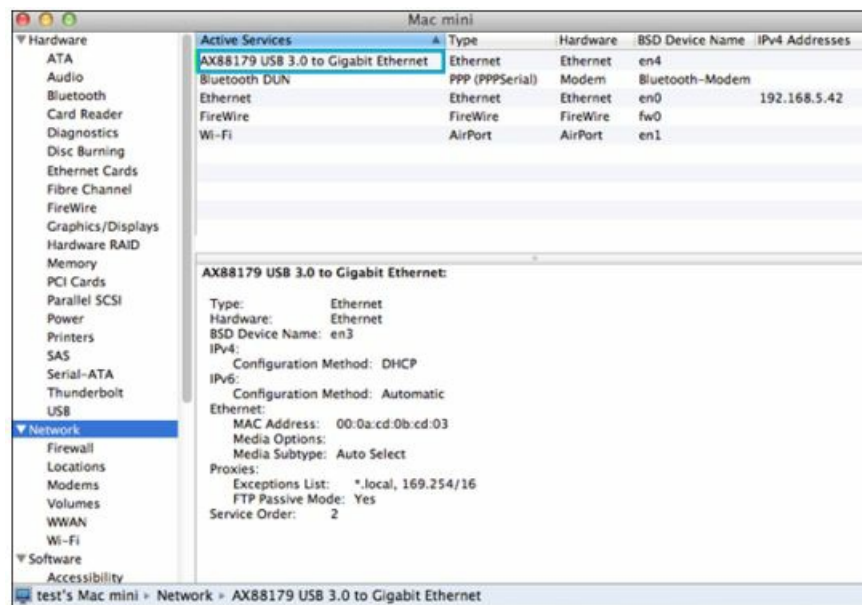
### Windows

1. Open the Device Manager by right-clicking on Computer, and then select Manage. In the new Computer Management window, select Device Manager from the left window panel (For Windows 8, open the Control Panel and select Device Manager).
2. Expand the "Network adapters" section. On a successful install, you should see the following devices installed with no exclamation points or question marks.



## Mac OS

1. Open the System Profiler by clicking the Apple symbol in the top left corner, selecting About this Mac, then selecting System Report
2. Expand the "Network" section. With the adapter connected, you should see the following devices in the list.



## Specifications

<b>Host Interface</b>	USB 3.0
<b>Connectors</b>	1 x RJ-45 Female 1 x USB 3.0 type A Male 1 x USB 3.0 type A Female
<b>Maximum Data Transfer Rate</b>	USB 3.0: 5 Gbps LAN: 2 Gbps (per port; Full-Duplex)
<b>Supported Standards</b>	IEEE802.3i, IEEE 802.3u, IEEE 802.3ab, IEEE 802.3az
<b>Supported Network Link Speeds</b>	10/ 100/ 1000 Mbps
<b>Ethernet Full Duplex Support</b>	Yes
<b>Auto MDIX</b>	Yes
<b>Power</b>	USB-Powered
<b>Enclosure Material</b>	Plastic
<b>Operating Temperature</b>	0°C to 50°C (32°F to 122°F)
<b>Storage temperature</b>	-20°C to 60°C (-4°F to 140°F)
<b>Dimensions</b>	82 x 35 x 17 mm
<b>Humidity</b>	5~85% RH
<b>Weight</b>	50g

## Technical Support

[StarTech.com](http://www.startech.com)'s lifetime technical support is an integral part of our commitment to provide industry-leading solutions. If you ever need help with your product, visit [www.startech.com/support](http://www.startech.com/support) and access our comprehensive selection of online tools, documentation, and downloads. For the latest drivers/software, please visit [www.startech.com/downloads](http://www.startech.com/downloads)

## Warranty Information

This product is backed by a two-year warranty. In addition, [StarTech.com](http://www.startech.com) warrants its products against defects in materials and workmanship for the periods noted, following the initial date of purchase. During this period, the products may be returned for repair, or replacement with equivalent products at our discretion. The warranty covers parts and labor costs only. [StarTech.com](http://www.startech.com) does not warrant its products from defects or damages arising from misuse, abuse, alteration, or normal wear and tear.

### Limitation of Liability

In no event shall the liability of [StarTech.com](http://www.startech.com) Ltd. and [StarTech.com](http://www.startech.com) USA LLP (or their officers, directors, employees or agents) for any damages (whether direct or indirect, special, punitive, incidental, consequential, or otherwise), loss of profits, loss of business, or any pecuniary loss, arising out of or related to the use of the product exceed the actual price paid for the product. Some states do not allow the exclusion or limitation of incidental or consequential damages. If such laws apply, the limitations or exclusions contained in this statement may not apply to you.

**Hard-to-find made easy. At [StarTech.com](http://www.startech.com), that isn't a slogan. It's a promise.**

[StarTech.com](http://www.startech.com) is your one-stop source for every connectivity part you need. From the latest technology to legacy

products — and all the parts that bridge the old and new — we can help you find the parts that connect your solutions.

We make it easy to locate the parts, and we quickly deliver them wherever they need to go. Just talk to one of our tech advisors or visit our website. You'll be connected to the products you need in no time.

Visit [www.startech.com](http://www.startech.com) for complete information on all StarTech.com products and to access exclusive resources and time-saving tools. [StarTech.com](http://StarTech.com) is an ISO 9001 Registered manufacturer of connectivity and technology parts. [StarTech.com](http://StarTech.com) was founded in 1985 and has operations in the United States, Canada, the United Kingdom and Taiwan servicing a worldwide market.

## Reviews

Share your experiences using [StarTech.com](http://StarTech.com) products, including product applications and setup, what you love about the products and areas for improvement.

[StarTech.com](http://StarTech.com) Ltd. 45 Artisans Crescent London, Ontario N5V 5E9 Canada

- FR: [fr.startech.com](http://fr.startech.com)
- DE: [de.startech.com](http://de.startech.com)

## FAQ's

What is the StarTech USB31000SPTB USB 3.0 to Gigabit Ethernet Adapter?

The StarTech USB31000SPTB is a USB 3.0 to Gigabit Ethernet adapter, allowing devices with USB ports to connect to a wired Gigabit Ethernet network.

What is the purpose of this adapter?

This adapter provides a solution for devices without built-in Ethernet ports, enabling them to access high-speed Gigabit Ethernet networks via a USB 3.0 connection.

What devices are compatible with this adapter?

The adapter is compatible with devices that have a USB 3.0 port, including laptops, desktops, Ultrabooks, and tablets.

What network speeds does the adapter support?

The adapter supports Gigabit Ethernet speeds, providing up to 1000 Mbps data transfer rates.

Does this adapter require driver installation?

In most cases, the adapter requires driver installation for proper functionality. Drivers are often included with the adapter or can be downloaded from StarTech's official website.

Is this adapter plug-and-play?

While it might require driver installation initially, once the drivers are installed, the adapter should work as a

plug-and-play device when connected to a compatible USB port.

Does it support USB 2.0 ports as well?

Yes, the adapter is backward compatible with USB 2.0 ports, although the maximum network speed will be limited by the USB 2.0 bandwidth.

Is the adapter bus-powered or does it require external power?

The adapter is typically bus-powered, meaning it draws power from the USB port it's connected to, without the need for an external power source.

Is it compatible with macOS and Linux operating systems?

Yes, the adapter often comes with drivers for Windows, macOS, and Linux, making it versatile across different operating systems.

Can I use this adapter for gaming and streaming?

While the adapter can handle basic gaming and streaming, for optimal performance, it's recommended to use a dedicated wired Gigabit Ethernet connection.

Is this adapter suitable for professional use or just personal use?

The adapter can serve both personal and professional purposes, providing a reliable Ethernet connection for various scenarios.

Can I use multiple adapters on the same device?

In most cases, you can use multiple adapters on the same device if you have multiple available USB ports. However, ensure that your device's USB controller can handle the additional load.

**References:** [StarTech USB31000SPTB USB 3.0 to Gigabit Ethernet Adapter – Device.report](#)