

StarTech USB2VGAE2 USB to VGA Adapter



StarTech USB2VGAE2 USB to VGA External Video Adapter Instruction Manual

[Home](#) » [Support](#) » StarTech USB2VGAE2 USB to VGA External Video Adapter Instruction Manual 

Contents

- [1 StarTech USB2VGAE2 USB to VGA External Video Adapter](#)
- [2 FCC Compliance Statement](#)
- [3 Introduction](#)
- [4 Packaging Contents](#)
- [5 System Requirements](#)
- [6 Installation](#)
- [7 Multiple USB Video Adapter Installation](#)
- [8 Configuring the USB Video Adapter](#)
- [9 Display Modes](#)
- [10 Identify Monitors](#)
- [11 Specifications](#)
- [12 Supported Resolutions](#)
- [13 Technical Support](#)
- [14 Warranty Information](#)
- [15 FAQs](#)
- [16 Related Posts](#)

StarTech.com

StarTech USB2VGAE2 USB to VGA External Video Adapter



FCC Compliance Statement

This equipment has been tested and found to comply with the limits for a Class B digital device, pursuant to part 15 of the FCC Rules. These limits are designed to provide reasonable protection against harmful interference in a residential installation. This equipment generates, uses, and can radiate radio frequency energy and, if not installed and used in accordance with the instructions, may cause harmful interference to radio communications.

However, there is no guarantee that interference will not occur in a particular installation. If this equipment does cause harmful interference to radio or television reception, which can be determined by turning the equipment off and on, the user is encouraged to try to correct the interference by one or more of the following measures:

- Reorient or relocate the receiving antenna.
- Increase the separation between the equipment and the receiver.
- Connect the equipment to an outlet on a circuit different from that to which the receiver is connected.
- Consult the dealer or an experienced radio/TV technician for help.

Use of Trademarks, Registered Trademarks, and other Protected Names and Symbols

This manual may make reference to trademarks, registered trademarks, and other protected names and/or symbols of third-party companies not related in any way to StarTech.com. Where they occur these references are for illustrative purposes only and do not represent an endorsement of a product or service by StarTech.com, or an endorsement of the product(s) to which this manual applies by the third-party company in question.

Regardless of any direct acknowledgment elsewhere in the body of this document, StarTech.com hereby acknowledges that all trademarks, registered trademarks, service marks, and other protected names and/or symbols contained in this manual and related documents are the property of their respective holders.

Introduction

The USB DVI or VGA Multi Monitor External Video Adapter turns an available USB 2.0 port into an external video card DVI or VGA port – providing high quality dual-display or multi-monitor capability that can be used in a variety of laptop or desktop applications to increase your productivity.

The device also offers the option of running up to five additional displays simultaneously (using five Multi Monitor External Video Adapters). Each connected adapter can be used to further extend the desktop or mirror the image shown on the existing display – all without having to open the computer case to install an additional video card.

Packaging Contents

- 1 x USB External Video Adapter
- 1 x Driver and Software CD
- 1 x Instruction Manual

System Requirements

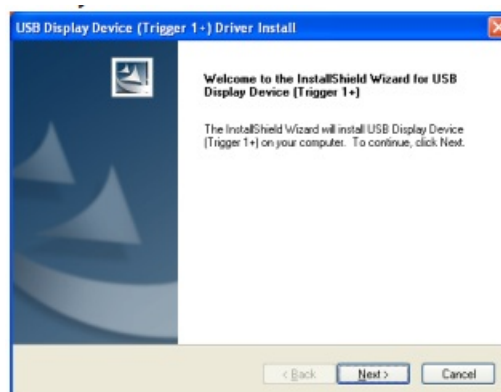
- Available USB 2.0 port
- **Single Video Adapter:**
 - **CPU:** Intel/AMD single core 1.5GHz or higher
 - **RAM:** 512MB or more
- **2-3 Video Adapters:**
 - **CPU:** Intel/AMD single core 2.4GHz or higher
 - **RAM:** 1GB or more
- **4-5 Video Adapters:**
 - **CPU:** Intel/AMD dual-core 2.0GHz or higher
 - **RAM:** 2GB or more
- Microsoft® Windows® 2000/XP/Vista/7 (32/64-bit)

Installation

Please ensure that the driver installation is complete before the physical installation of the USB 2.0 Video Adapter.

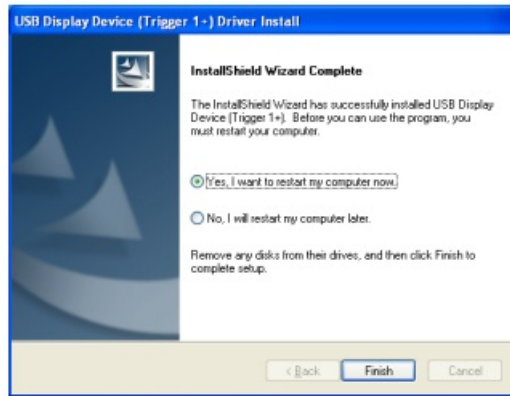
Driver Installation

1. Insert the Driver CD into your CD/DVD-ROM drive.
2. If the installation program does not begin automatically, locate the Setup.exe application. This file will be located in the root directory of the Driver CD.
3. Executing the Setup.exe application will launch the following screen. Please click on Next:



*** Ensure that the USB Video Adapter is not connected to the host computer.**

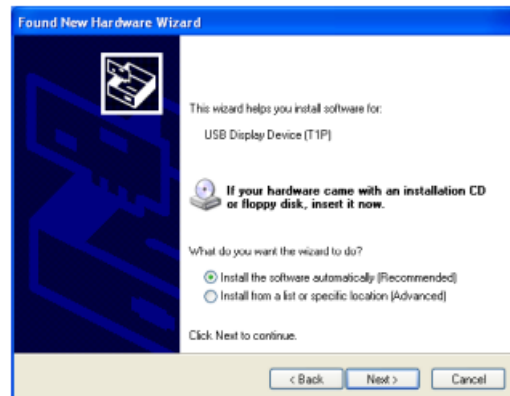
4. Once Windows has finished the driver installation, it will prompt you to restart the computer. Select “Yes, I want to restart my computer now”, and click the “Finish” button.



5. While the computer is restarting, connect the video cable running from the secondary monitor/display to the USB adapter. Turn the monitor/display on.
6. Once Windows has fully loaded, plug the USB Video Adapter into an available USB 2.0 port of your PC or Notebook.
7. A Hardware Installation Wizard dialog will show up, please select “No, not this time” and click “Next” to continue.



8. Please select “Install the software automatically (Recommended)”. Click “Next” to continue.



9. Click “Finish” to complete the Hardware Wizard.

Multiple USB Video Adapter Installation

Ensure you have the latest version of the drivers installed, otherwise, please download them from the [StarTech.com](http://www.startech.com) website (www.startech.com).

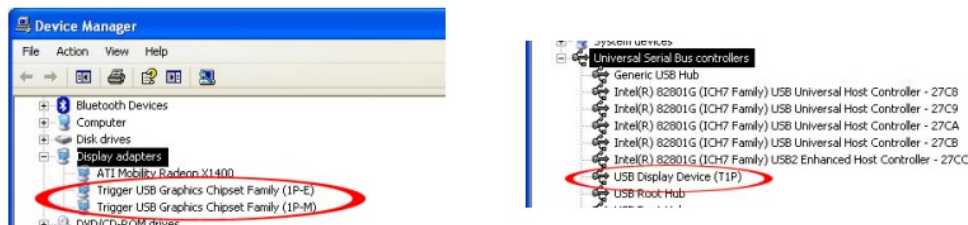
1. Complete the installation steps, up to when you plug in the first USB Video Adapter.
2. Connect another monitor/display to the video connector of the second USB Video Adapter, then turn on the display.
3. Connect the USB type A connector on the second USB Video Adapter to an available USB 2.0 port on the host

computer. The driver installation will begin automatically.


Repeat these steps for each additional USB Video Adapter you wish to install. Once all USB Video Adapters are installed, reboot the computer. After rebooting, you may be prompted to reboot one final time; please do so.

Verifying Installation

From the main desktop, right-click on “My Computer” (“Computer” in Vista/7), then select Manage. In the new Computer Management window, select Device Manager from the left window panel. Double-click the Display Adapters and Universal Serial Bus Controllers category.

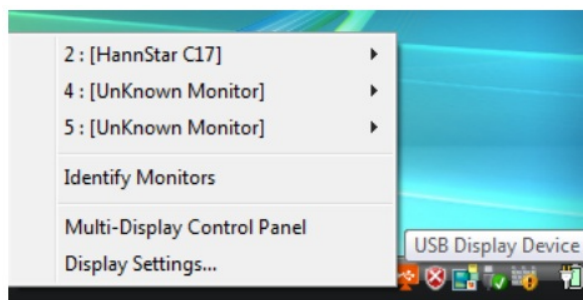


Configuring the USB Video Adapter

Look for the USB Video Adapter icon () on your Windows Start bar. Right-click this icon to access the variety of functions associated to the adapter.

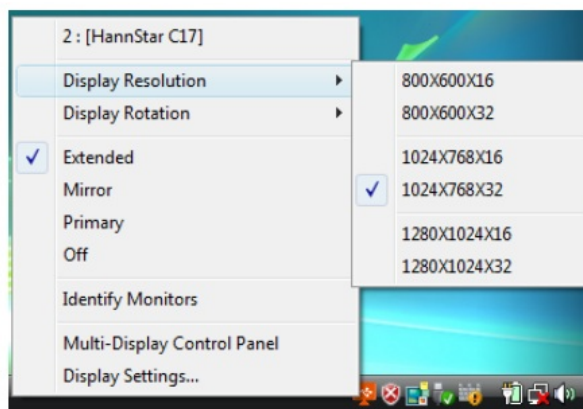
- **Display ID**

The USB Video Adapter supports the VESA-defined DDC/EDID standard. The utility will show the display device ID whenever it is attached to the USB Video Adapter. If there is no display device attached to the USB Video Adapter, an “Unknown Monitor” ID will be shown. In some cases, if the attached display device does not support EDID, the ID will also be defined as “Unknown Monitor”.



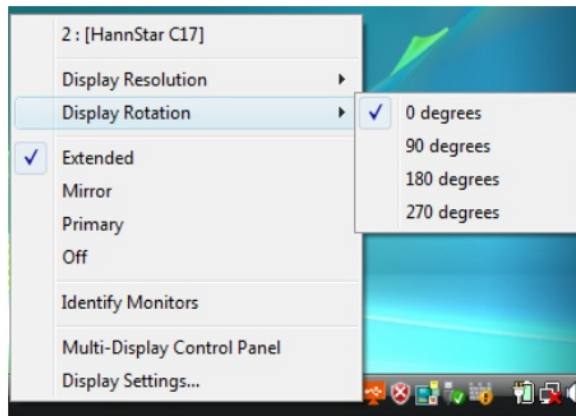
- **Display Resolution**

Select the desired video display resolution for the connected monitor. The default setting resolution is: 1024 x 768 * 32-bit.



- **Display Rotation**

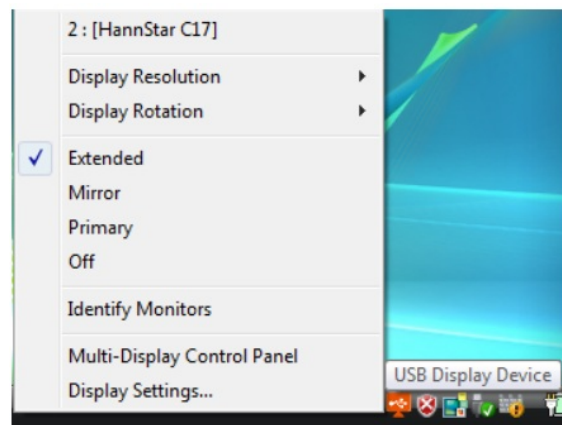
4 options available: 0°, 90°, 180°, 270° when used with the Extended or Primary display modes. It is a useful function for some rotatable display devices.



Display Modes

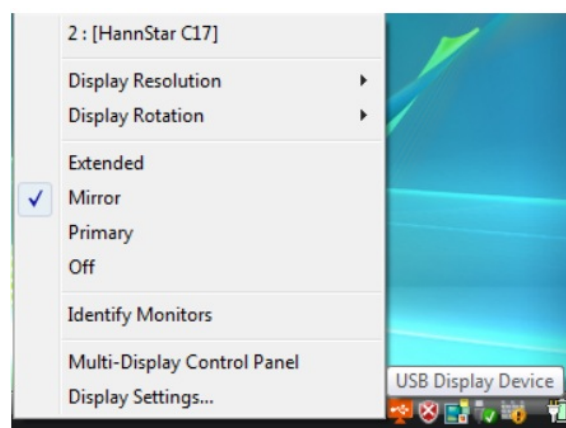
- **“EXTENDED” DISPLAY MODE (DEFAULT)**

A default display mode; this feature allows the attached USB Video Adapter enabled display to work as an “Extended” display to the on-board display. The extended working space improves work efficiency. You may change the relative position of this extended display through the Display Settings.



- **“MIRROR” DISPLAY MODE**

This feature allows the same content from the onboard display to be duplicated (mirroring) to the USB Video Adapter-enabled display. The screen resolution setting on the USB Video Adapter enabled device will match the on-board display’s resolution. For example, if the on-board display’s resolution is 1024×768*32-bit, the USB Video Adapter will use the same resolution.



- **“PRIMARY” DISPLAY MODE**

A unique feature allows the USB Video Adapter to act as the main working display. The USB Video Adapter will work as the main graphics adapter on the system. The on-board display will work as the extended display.

Please be advised that some display utilities and drivers that shipped with certain AGP and built-in display adapters may prevent this option from working on some systems. You may be able to disable the other utility program (usually found in the same toolbar located on the bottom right-hand corner) to make this function work properly.



- **“OFF” DISPLAY MODE**

This option disables the video output from the USB Video Adapter.

Identify Monitors

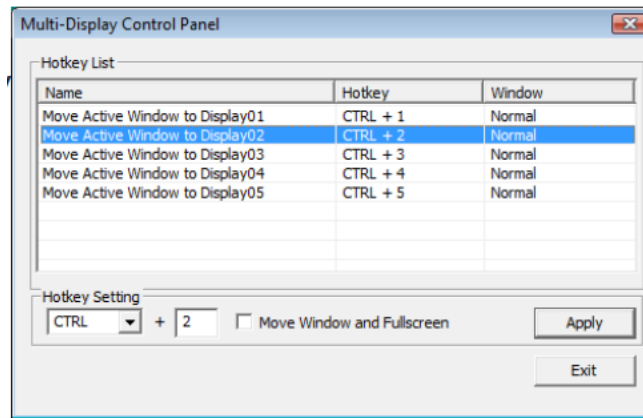
Easy display identification via an overlay will be shown in the upper right corner of all attached display devices.



Multi-Display Control Panel

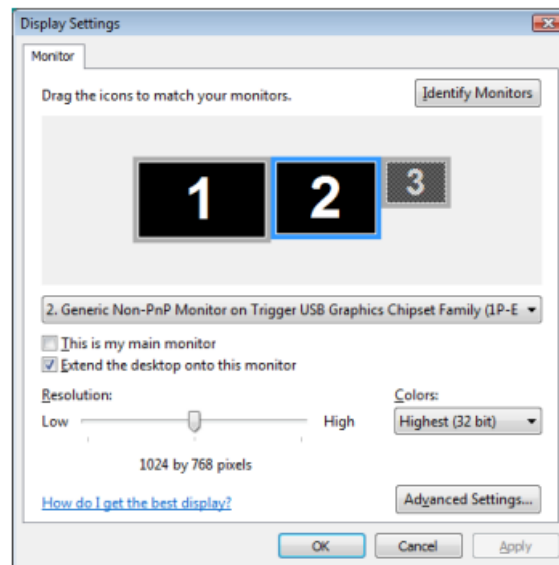
A unique feature to allow quicker and simpler management of a multi-display environment. A series of hotkeys to quickly move the active window or mouse cursor to the desired display (either on-board or each USB Video Adapter). The default setting of the hotkeys can be found in the Hotkey List of “Multi-Display Control Panel”.

For example: Ctrl + 2 means: to move the window to Display 2



Display Settings

Quick access to the Windows “Display Settings” window.



Specifications

- **Host Interface:** USB 2.0
- **Connectors:** 1 x USB type A male, 1 x DE-15 VGA female
- **Onboard Memory:** 16 MB
- **Operating Temperature:** 0°C ~ 70°C (32°F ~ 158°F)
- **Storage Temperature:** 15°C ~ 30°C (32°F ~ 122°F)
- **Humidity:** 45% ~ 85% RH
- **Dimension (LxWxH):** 75.0mm x 42.0mm x 18.0mm
- **Weight:** 80g
- **Compatible Operating Systems:** Windows XP (32/64-bit), Vista (32/64-bit), Windows 7 (32/64-bit), Windows 8/8.1 (32/64-bit), Windows 10 (32/64-bit)

Supported Resolutions

Resolution	Color Depth	Refresh Rate
800×600	32-bit	60/75Hz
1024×768	32-bit	60/75Hz
1152×864	32-bit	60Hz
1280×768	32-bit	60Hz
1280×800	32-bit	60Hz
1280×960	32-bit	60Hz
1280×1024	32-bit	60Hz
1400×1050	32-bit	60Hz
1440×900	32-bit	60Hz
1680×1050	32-bit	60Hz

Technical Support

[StarTech.com](http://www.startech.com) lifetime technical support is an integral part of our commitment to provide industry-leading solutions. If you ever need help with your product, visit www.startech.com/support and access our comprehensive selection of online tools, documentation, and downloads. For the latest drivers/software, please visit www.startech.com/downloads

Warranty Information

This product is backed by a one-year warranty. In addition, [StarTech.com](http://www.startech.com) warrants its products against defects in materials and workmanship for the periods noted, following the initial date of purchase. During this period, the products may be returned for repair, or replacement with equivalent products at our discretion. The warranty covers parts and labor costs only. [StarTech.com](http://www.startech.com) does not warrant its products from defects or damages arising from misuse, abuse, alteration, or normal wear and tear.

Limitation of Liability

In no event shall the liability of [StarTech.com](http://www.startech.com) Ltd. and [StarTech.com](http://www.startech.com) USA LLP (or their officers, directors, employees or agents) for any damages (whether direct or indirect, special, punitive, incidental, consequential, or otherwise), loss of profits, loss of business, or any pecuniary loss, arising out of or related to the use of the product exceed the actual price paid for the product. Some states do not allow the exclusion or limitation of incidental or consequential damages. If such laws apply, the limitations or exclusions contained in this statement may not apply to you.

Hard-to-find made easy. At [StarTech.com](http://www.startech.com), that isn't a slogan. It's a promise.

[StarTech.com](http://www.startech.com) is your one-stop source for every connectivity part you need. From the latest technology to legacy products — and all the parts that bridge the old and new — we can help you find the parts that connect your solutions.

We make it easy to locate the parts, and we quickly deliver them wherever they need to go. Just talk to one of our tech advisors or visit our website. You'll be connected to the products you need in no time.

Visit www.startech.com for complete information on all [StarTech.com](http://www.startech.com) products and to access exclusive resources and time-saving tools. [StarTech.com](http://www.startech.com) is an ISO 9001 Registered manufacturer of connectivity and technology parts. StarTech.com was founded in 1985 and has operations in the United States, Canada, the United Kingdom and Taiwan servicing a worldwide market.

FAQs

What is the StarTech USB2VGAE2 Video Adapter?

The StarTech USB2VGAE2 is an external video adapter that allows you to connect a VGA monitor to your computer or laptop using a USB port.

What is the purpose of this video adapter?

This video adapter is designed to add an additional VGA display to your computer, extending your desktop or mirroring your primary screen.

What type of video output does it support?

The USB2VGAE2 supports VGA (analog) video output, making it compatible with a wide range of VGA monitors and displays.

Is this video adapter compatible with both Windows and Mac computers?

Yes, the USB2VGAE2 is compatible with both Windows and Mac operating systems, offering versatility for various computer platforms.

What is the maximum supported resolution of the video adapter?

The maximum supported resolution is 1920x1200, allowing you to enjoy high-quality video and graphics on your additional monitor.

Does it require additional power or an external power source?

No, this video adapter is typically bus-powered, meaning it draws power from the USB port, eliminating the need for an external power source.

Is there a driver or software installation required?

Yes, you may need to install drivers or software provided by StarTech to ensure proper operation and compatibility with your computer's operating system.

How do I connect the adapter to my computer?

You connect the USB2VGAE2 to your computer by plugging it into an available USB port, and then connecting the VGA cable from your monitor to the adapter.

Can I use multiple USB2VGAE2 adapters on the same computer?

Yes, you can use multiple adapters to connect multiple VGA monitors to your computer, extending your display capabilities.

Is it suitable for presentations or extended desktops?

Yes, this adapter is ideal for presentations, as it allows you to extend your desktop, giving you more screen space for multitasking and presentations.

Is it compatible with USB 3.0 or USB-C ports?

The USB2VGAE2 is compatible with USB 2.0 ports. If you have a USB 3.0 or USB-C port, you may need an additional adapter or converter.

Is there a warranty for the StarTech USB2VGAE2 Video Adapter?

The StarTech USB2VGAE2 Video Adapter typically comes with a warranty of 2 years from the date of purchase.

References: [StarTech USB2VGAE2 USB to VGA External Video Adapter – Device.report](#)
