



StarTech ST1000SPEX2 PCI Express Gigabit Ethernet Network Card User Manual

[Home](#) » [StarTech](#) » StarTech ST1000SPEX2 PCI Express Gigabit Ethernet Network Card User Manual 

Contents

- [1 StarTech ST1000SPEX2 PCI Express Gigabit Ethernet Network Card](#)
- [2 Compliance Statements](#)
- [3 For the State of California](#)
- [4 Safety Statements](#)
- [5 Product Diagram](#)
- [6 Product Information](#)
- [7 Installation](#)
- [8 Driver Installation](#)
- [9 Verify Installation](#)
- [10 LED Indicators](#)
- [11 Specifications](#)
- [12 Warranty Information](#)
- [13 Support](#)
- [14 FAQ's](#)

StarTech.com

StarTech ST1000SPEX2 PCI Express Gigabit Ethernet Network Card



Compliance Statements

FCC Compliance Statement

This equipment has been tested and found to comply with the limits for a Class B digital device, pursuant to part 15 of the FCC Rules. These limits are designed to provide reasonable protection against harmful interference in a residential installation. This equipment generates, uses, and can radiate radio frequency energy and, if not installed and used in accordance with the instructions, may cause harmful interference to radio communications. However, there is no guarantee that interference will not occur in a particular installation. If this equipment does cause harmful interference to radio or television reception, which can be determined by turning the equipment off and on, the user is encouraged to try to correct the interference by one or more of the following measures:

- Reorient or relocate the receiving antenna
- Increase the separation between the equipment and the receiver
- Connect the equipment to an outlet on a circuit different from that to which the receiver is connected
- Consult the dealer or an experienced radio/TV technician for help

For the State of California

WARNING: Cancer and Reproductive Harm

www.P65Warnings.ca.gov

Use of Trademarks, Registered Trademarks, and other Protected Names and Symbols

This manual may make reference to trademarks, registered trademarks, and other protected names and/or symbols of third-party companies not related in any way to StarTech.com. Where they occur these references are for illustrative purposes only and do not represent an endorsement of a product or service by StarTech.com.

or an endorsement of the product(s) to which this manual applies by the third-party company in question. Regardless of any direct acknowledgment elsewhere in the body of this document, StarTech.com hereby acknowledges that all trademarks, registered trademarks, service marks, and other protected names and/or symbols contained in this manual and related documents are the property of their respective holders.

Safety Statements

Safety Measures

- Wiring terminations should not be made with the product and/or electric lines under power.
- Product installation and/or mounting should be completed by a certified professional as per the local safety and building code guidelines.
- Cables (including power and charging cables) should be placed and routed to avoid creating electric, tripping or safety hazards.

Warning Statements

Make sure to assemble this product according to the instructions. Failure to do so might result in personal injury or property damage. Never use this product if parts are missing or damaged.

Product Diagram



Product Information

Package Contents

- Gigabit Ethernet PCI Express Card x 1
- 1x Low Profile Bracket x 1
- 1x User Manual x 1

System Requirements

- PCI Express enabled computer system with available PCI Express slot
- Microsoft® Windows® XP/ Server 2003/ Server 2008 R2/ Vista/ 7/ 8 (32/64-bit), or Apple® Mac OS® 10.4 ~ 10.8, or Linux® kernel 2.4.x and later

Installation

Warning! PCI Express cards, like all computer equipment, can be severely damaged by static electricity. Be sure that you are properly grounded before opening your computer case or touching your PCI Express card.

StarTech.com recommends that you wear an anti-static strap when installing any computer component. If an anti-static strap is unavailable, discharge yourself of any static electricity build-up by touching a large grounded metal surface (such as the computer case) for several seconds. Also, be careful to handle the PCI Express card by its edges and not the gold connectors.

Hardware Installation

1. Turn your computer off and any peripherals connected to the computer (i.e. Printers, external hard drives, etc.).
Unplug the power cable from the rear of the power supply on the back of the computer and disconnect all peripheral devices.
2. Remove the cover from the computer case. See the documentation for your computer system for details.
3. Locate an open PCI Express slot and remove the metal cover plate on the rear of the computer case (Refer to the documentation for your computer system for details.). Note that this card will work in PCI Express slots of additional lanes (i.e. x4, x8, or x16 slots).
4. Gently insert the card into the open PCI Express slot and fasten the bracket to the rear of the case.
Note: Replacing the pre-installed installation bracket may be necessary at this point depending on the card purchased (ST1000SPEX2), and the profile of the system it is being installed in.
5. Place the cover back onto the computer case. Insert the power cable into the socket on the power supply and reconnect all other connectors removed in Step 1.

Driver Installation

Notes: New versions of this product do not include the Driver CD.

Please visit www.StarTech.com/ST1000SPEX2 and navigate to the Support tab to locate and download the latest drivers.

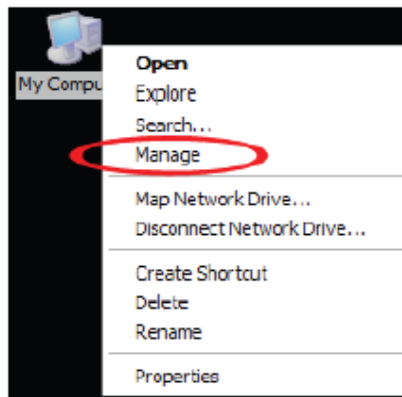
Windows

1. Upon starting Windows, if the “Found New Hardware” wizard appears on the screen, cancel/close the window and insert the included Driver CD into the computer’s CD/DVD drive.
2. AutoPlay should give you the option to browse the files on the CD or automatically open the CD. If AutoPlay does not start, Go into “My Computer” and access the CD/DVD drive that the CD is in (e.g. D:).
3. Navigate to the location “Realtek/RTL8111” and then access the folder for the appropriate operating system version.
4. Double-click the file “Setup.exe” to start the driver installation program.
5. Complete the wizard and this will automatically install all of the drivers/software. Restart the computer if prompted.

Verify Installation

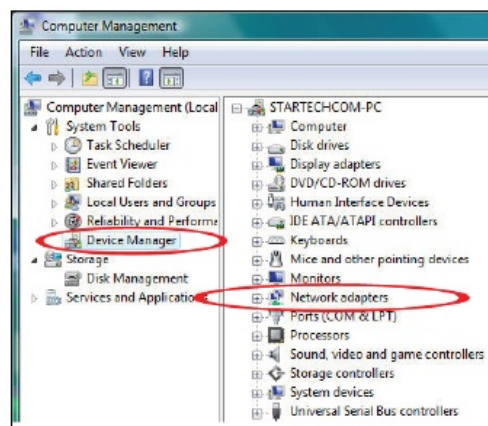
Windows

1. From the main desktop, right-click on My Computer (Computer in Vista/7/8).



Pop-up menu

2. From the pop-up menu, select Manage.
3. On the Computer Management screen, select Device Manager (left menu).
4. The right side of the Computer Management screen will populate. Select Network Adapters.



Computer Management screen

5. The Realtek PCIe GBE devices listed will be listed if the installation was successful.

LED Indicators

LED	Color	Status
Link/Activity	Green	Solid On: Link/cable detected Flashing: Data transmission Off: No link/cable detected
Gigabit	Yellow	Solid On: 1000 Mbps (Gigabit) Link detected Off: 10/100 Mbps Link or no link detected

Specifications

	ST1000SPEX2	ST1000SPEX2L
Host Interface	PCI Express 1.1 (x1 slot connector)	
Form Factor	Standard Profile (LP Bracket Included)	Low Profile (SP Bracket Included)
Chipset ID	Realtek RTL8111E	
External Connectors	1x RJ45 Ethernet Female	
LEDs	1x Gigabit 1x Link/Activity	
Supported Standards	IEEE 802.3, IEEE802.3u, IEEE 802.3ab	
Compatible Networks	10/100/1000 Mbps	
Auto MDIX Support	Yes	
Full Duplex Support	Yes	
Operating Temperature	0°C ~ 70°C (32°F ~ 158°F)	
Storage Temperature	0°C ~ 100°C (32°F ~ 212°F)	

Humidity	10% ~ 90% RH	
Dimensions	67.9 x 18 x 120.3mm	67.9 x 18 x 65mm
Weight	40g	36g
Compatible Operating Systems	Windows® 8 (32/64bit), 7 (32/64), Vista(32/64), XP(32/64), 2000 Windows® Server 2008 R2, 2003(32/64) Mac OS X (Intel based, tested up to 10.8) Linux	

Warranty Information

This product is backed by a two-year warranty. For further information on product warranty terms and conditions, please refer to www.startech.com/warranty.

Limitation of Liability

In no event shall the liability of [StarTech.com](http://www.startech.com) Ltd. and [StarTech.com](http://www.startech.com) USA LLP (or their officers, directors, employees, or agents) for any damages (whether direct or indirect, special, punitive, incidental, consequential, or otherwise), loss of profits, loss of business, or any pecuniary loss, arising out of or related to the use of the product exceed the actual price paid for the product. Some states do not allow the exclusion or limitation of incidental or consequential damages. If such laws apply, the limitations or exclusions contained in this statement may not apply to you.

Hard-to-find made easy. At [StarTech.com](http://www.startech.com), that isn't a slogan. It's a promise.

[StarTech.com](http://www.startech.com) is your one-stop source for every connectivity part you need. From the latest technology to legacy products — and all the parts that bridge the old and new — we can help you find the parts that connect your solutions.

We make it easy to locate the parts, and we quickly deliver them wherever they need to go. Just talk to one of our tech advisors or visit our website. You'll be connected to the products you need in no time. Visit www.startech.com for complete information on all [StarTech.com](http://www.startech.com) products and to access exclusive resources and time-saving tools. [StarTech.com](http://www.startech.com) is an ISO 9001 Registered manufacturer of connectivity and technology parts. [StarTech.com](http://www.startech.com) was founded in 1985 and has operations in the United States, Canada, the United Kingdom, and Taiwan servicing a worldwide market.

Reviews

Share your experiences using [StarTech.com](http://www.startech.com) products, including product applications and setup, what you love about the products and areas for improvement.

Support

- **Address:** StarTech.com LLP 2500 Creekside Pkwy. Lockbourne, Ohio 43137 U.S.A.
- **ES:** es.startech.com
- **NL:** nl.startech.com

FAQ's

What is the StarTech ST1000SPEX2 Gigabit Ethernet Network Card?

The StarTech ST1000SPEX2 is a PCI Express Gigabit Ethernet network card designed to provide high-speed network connectivity to a desktop computer or server via a PCI Express slot.

What are the key features of the ST1000SPEX2 network card?

The ST1000SPEX2 features a Gigabit Ethernet interface, auto-negotiation support, Wake-on-LAN (WoL) capability, and energy-efficient operation. It offers reliable and fast network connectivity.

Is the network card compatible with my computer's operating system?

The ST1000SPEX2 is compatible with a wide range of operating systems, including Windows, macOS, Linux, and various server operating systems. Ensure you have the appropriate drivers for your OS.

How do I install the ST1000SPEX2 network card in my computer?

To install the network card, power off your computer, open the case, locate an available PCI Express slot, insert the card firmly, secure it in place, and connect the Ethernet cable. Then, power on your computer and install the necessary drivers.

What benefits does Gigabit Ethernet provide?

Gigabit Ethernet offers significantly faster data transfer speeds compared to standard Ethernet connections. It is ideal for tasks such as high-speed data transfer, online gaming, and multimedia streaming.

Can I use this network card for online gaming?

Yes, the ST1000SPEX2's Gigabit Ethernet capability is suitable for online gaming, providing low latency and high-speed connectivity for a smoother gaming experience.

Is Wake-on-LAN (WoL) supported by this network card?

Yes, the network card supports Wake-on-LAN (WoL), allowing you to remotely wake up your computer over the network, which can be convenient for remote management.

Is the ST1000SPEX2 energy-efficient?

Yes, the network card is designed for energy efficiency, helping reduce power consumption while providing high-performance network connectivity.

Does it come with drivers, or do I need to download them?

Drivers for the ST1000SPEX2 are typically available on the StarTech website and included on a CD or DVD with the product. You can download the latest drivers from the official website if needed.

What should I do if the network card is not recognized by my computer?

If the network card is not recognized, ensure it is securely installed in the PCI Express slot and that you have installed the correct drivers for your operating system. Check for any conflicts with other devices in your computer's Device Manager.

Can I use multiple network cards in the same computer?

Yes, you can use multiple network cards in the same computer, which can be useful for specific networking configurations and purposes.

What is the warranty for the ST1000SPEX2 network card?

The network card typically comes with a limited warranty. The duration and terms of the warranty may vary, so refer to the product documentation for warranty information.

Where can I find additional support and product information?

For additional support, product information, and driver downloads, visit the StarTech website or contact their customer support for assistance and resources.

References: [StarTech ST1000SPEX2 PCI Express Gigabit Ethernet Network Card – Device.report](#)