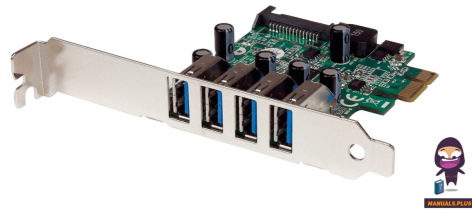


StarTech PEXUSB3S4V PCI USB 3.0 Card



# StarTech PEXUSB3S4V PCI USB 3.0 Card User Manual

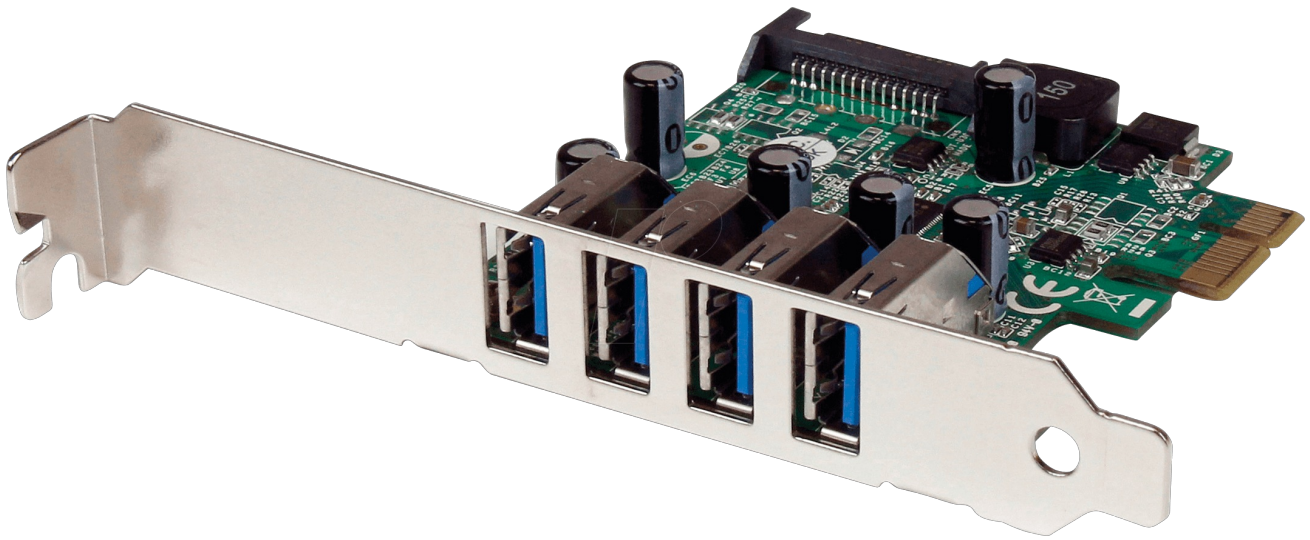
[Home](#) » [StarTech](#) » StarTech PEXUSB3S4V PCI USB 3.0 Card User Manual 

## Contents

- [1 StarTech PEXUSB3S4V PCI USB 3.0 Card](#)
- [2 FCC Compliance Statement](#)
- [3 Introduction](#)
- [4 Packaging Contents](#)
- [5 System Requirements](#)
- [6 Installation](#)
  - [6.1 Driver Installation](#)
  - [6.2 Verifying Installation](#)
- [7 Specifications](#)
- [8 Technical Support](#)
- [9 Warranty Information](#)
- [10 Hard-to-find made easy](#)
- [11 Frequently Asked Questions](#)
- [12 References](#)
- [13 Related Posts](#)

StarTech.com

StarTech PEXUSB3S4V PCI USB 3.0 Card



\*actual product may vary from photos

For the most up-to-date information, please visit: [www.startech.com](http://www.startech.com)

## FCC Compliance Statement

This equipment has been tested and found to comply with the limits for a Class B digital device, pursuant to part 15 of the FCC Rules. These limits are designed to provide reasonable protection against harmful interference in a residential installation. This equipment generates, uses and can radiate radio frequency energy and, if not installed and used in accordance with the instructions, may cause harmful interference to radio communications. However, there is no guarantee that interference will not occur in a particular installation. If this equipment does cause harmful interference to radio or television reception, which can be determined by turning the equipment off and on, the user is encouraged to try to correct the interference by one or more of the following measures:

- Reorient or relocate the receiving antenna.
- Increase the separation between the equipment and the receiver.
- Connect the equipment to an outlet on a circuit different from that to which the receiver is connected.
- Consult the dealer or an experienced radio/TV technician for help.

## Use of Trademarks, Registered Trademarks, and other Protected Names and Symbols

This manual may make reference to trademarks, registered trademarks, and other protected names and/or symbols of third-party companies not related in any way to [StarTech.com](http://StarTech.com). Where they occur these references are for illustrative purposes only and do not represent an endorsement of a product or service by StarTech.com, or an endorsement of the product(s) to which this manual applies by the third-party company in question. Regardless of any direct acknowledgment elsewhere in the body of this document, [StarTech.com](http://StarTech.com) hereby acknowledges that all trademarks, registered trademarks, service marks, and other protected names and/or symbols contained in this manual and related documents are the property of their respective holders.

## Introduction

The PEXUSB3S4V 4-Port PCI Express SuperSpeed USB 3.0 Card (with SATA Power) adds 4 external USB 3.0 ports to any PCI Express-enabled computer system. SuperSpeed USB 3.0 provides up to 5 Gbps of data bandwidth, while still being backward compatible with existing USB 2.0 devices at 480Mbps. Using a “stacked” port layout that places the ports one on top of the other, more ports are able to fit into a smaller space. This allows for all four USB 3.0 ports to be external facing, while still allowing the 4 port USB 3.0 card to fit into a small form factor/low profile computer system. With a built-in SATA power connector, each USB port can provide up to 900mA of power to USB 3.0 devices (500mA for USB 2.0) by connecting to your computer power supply. This

USB 3.0 PCIe card is backed by a [StarTech.com](http://StarTech.com) 2-year warranty and free lifetime technical support.

## Packaging Contents

- 1x PCI Express USB 3.0 Card
- 1x Low Profile Bracket
- 1x Driver CD
- 1x Instruction Manual

## System Requirements

- PCI Express enabled computer system with available PCI Express slot
- Available SATA power connector from the computer power supply
- Microsoft® Windows® XP/ Server 2003/ Server 2008 R2/ Vista/ 7/ 8 (32/64-bit)

## Installation

**WARNING!** PCI Express cards, like all computer equipment, can be severely damaged by static electricity. Be sure that you are properly grounded before opening your computer case or touching your PCI Express card. [StarTech.com](http://StarTech.com) recommends that you wear an anti-static strap when installing any computer component. If an anti-static strap is unavailable, discharge yourself of any static electricity build-up by touching a large grounded metal surface (such as the computer case) for several seconds. Also, be careful to handle the PCI Express card by its edges and not the gold connectors.

### Hardware Installation

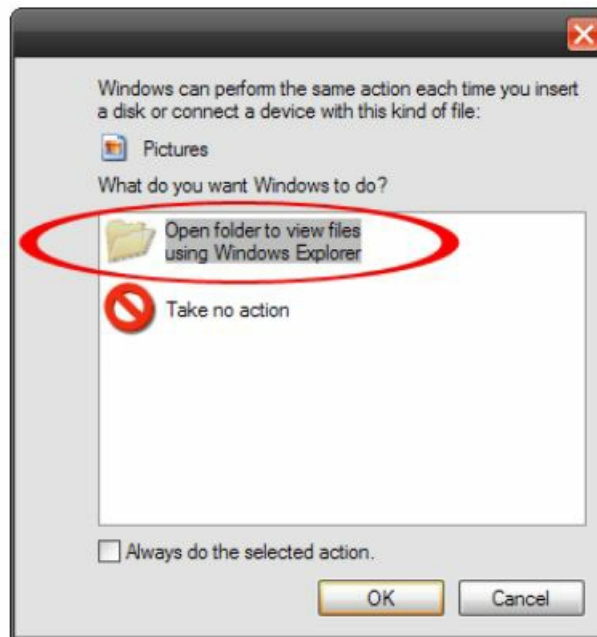
1. Turn your computer off and any peripherals connected to the computer (i.e. Printers, external hard drives, etc.). Unplug the power cable from the rear of the power supply on the back of the computer and disconnect all peripheral devices.
2. Remove the cover from the computer case. See the documentation for your computer system for details.
3. Locate an open PCI Express slot and remove the metal cover plate on the rear of the computer case (Refer to the documentation for your computer system for details.). Note that this card will work in PCI Express slots of additional lanes (i.e. x4, x8, or x16 slots).
4. Insert the card into the open PCI Express slot and fasten the bracket to the rear of the case.
  - **NOTE:** If installing the card into a small form factor/low profile system, replacing the pre-installed full profile bracket with the included low profile installation bracket may be necessary.
  - **OPTIONAL:** Connect a 15-pin SATA power connector from the computer's power supply to the SATA power connector on the card. This is only required if using the ports with bus-powered USB devices (no external power adapter) or if experiencing connectivity issues.
5. Place the cover back onto the computer case.
6. Insert the power cable into the socket on the power supply and reconnect all other connectors removed in Step 1.

### Driver Installation

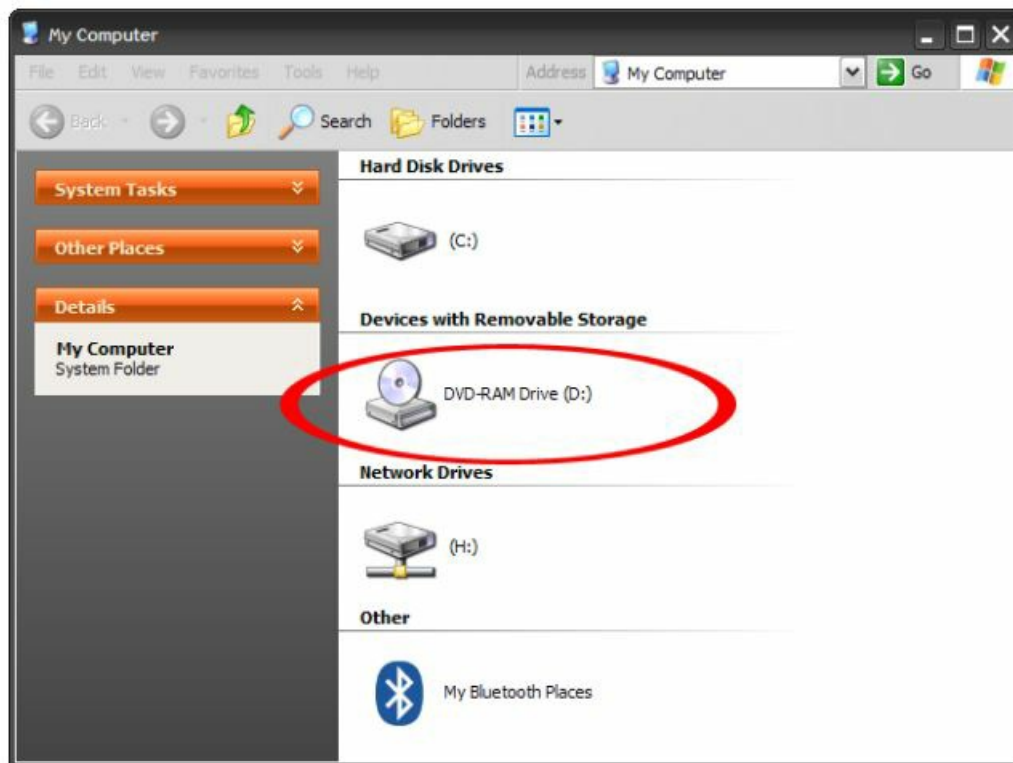
1. Once the computer has started and the operating system is fully loaded, insert the provided Driver CD into the

computer's CD/DVD drive.

2. AutoPlay should give you the option to browse the files on the CD or automatically open the CD.



3. If AutoPlay does not start, Go into "My Computer" and access the CD/DVD drive that the CD is in.

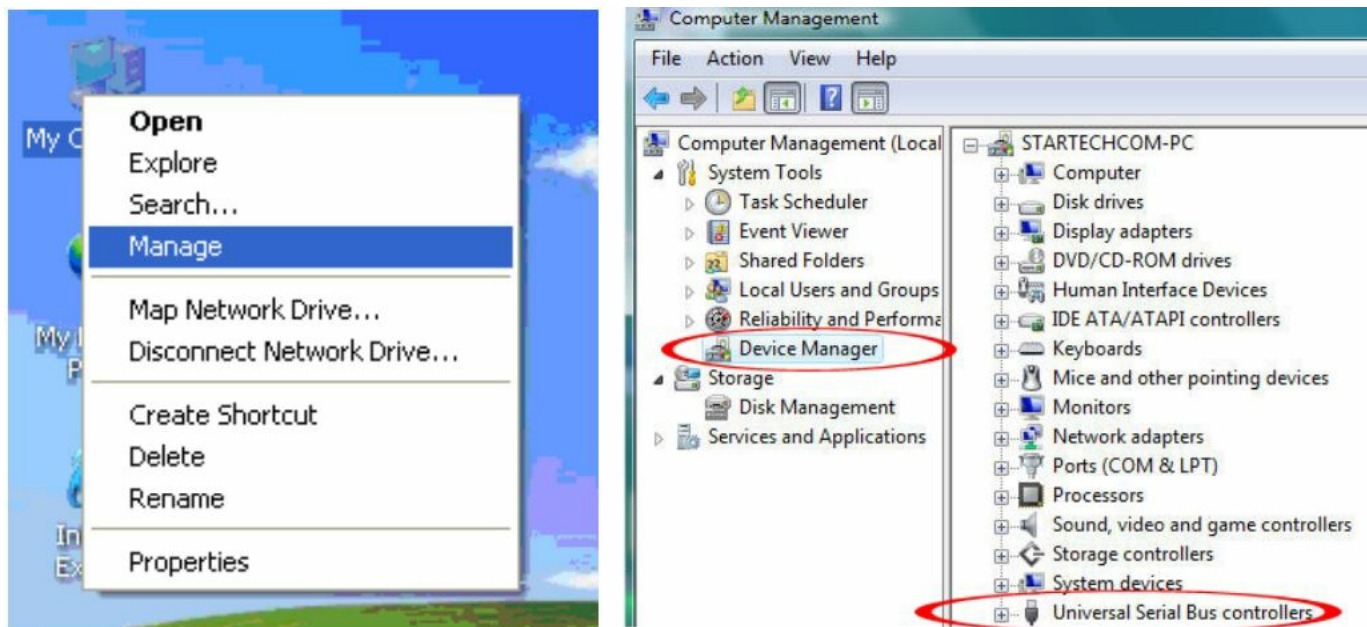


4. Run the "setup.exe" file. Follow the onscreen instructions to complete the driver installation.

### Verifying Installation

### Windows XP/Server 2003/Vista/7/8

From the main desktop, right-click on "My Computer" ("Computer" in Vista/7), then select Manage. In the new Computer Management window, select Device Manager from the left window panel.



In the Device Manager, under the Universal Serial Bus Controllers category, you should see the new entries for the USB 3.0 controller card.

## Specifications

- **Host Interface:** PCI Express 2.0 (x1 slot connector)
- **SuperSpeed USB:** 3.0
- **Number of Ports:** 4
- **Form Factor:** Full/Low Profile
- **Chipset ID:** NEC uPD720201
- **External Connectors:** 4 x USB 3.0 type A female
- **Internal Connectors:** 1 x 15-pin SATA Power male
- **Maximum Data Transfer Rate:** USB 3.0: 5 Gbps
- **Operating Temperature:** 5°C~50°C (41°F~122°F)
- **Storage Temperature:** -25°C~70°C (-13°F~158°F)
- **Humidity:** 20%~80% RH
- **Dimensions:** 75.0mm x 68.0mm x 19.0mm
- **Weight:** 45g
- **Compatible Operating Systems:** Windows XP/ Server 2003/ Server 2008 R2/ Vista/ 7/ 8 (32/64-bit)

## Technical Support

- [StarTech.com](http://www.startech.com)'s lifetime technical support is an integral part of our commitment to providing industry-leading solutions. If you ever need help with your product, visit [www.startech.com/support](http://www.startech.com/support) and access our comprehensive selection of online tools, documentation, and downloads.
- For the latest drivers/software, please visit [www.startech.com/downloads](http://www.startech.com/downloads)

## Warranty Information

This product is backed by a two-year warranty.

In addition, [StarTech.com](https://www.startech.com) warrants its products against defects in materials and workmanship for the periods noted, following the initial date of purchase.

During this period, the products may be returned for repair, or replacement with equivalent products at our discretion. The warranty covers parts and labor costs only. [StarTech.com](https://www.startech.com) does not warrant its products from defects or damages arising from misuse, abuse, alteration, or normal wear and tear.

### **Limitation of Liability**

In no event shall the liability of [StarTech.com](https://www.startech.com) Ltd. and [StarTech.com](https://www.startech.com) USA LLP (or their officers, directors, employees or agents) for any damages (whether direct or indirect, special, punitive, incidental, consequential, or otherwise), loss of profits, loss of business, or any pecuniary loss, arising out of or related to the use of the product exceed the actual price paid for the product. Some states do not allow the exclusion or limitation of incidental or consequential damages. If such laws apply, the limitations or exclusions contained in this statement may not apply to you.

### **Hard-to-find made easy**

At [StarTech.com](https://www.startech.com), that isn't a slogan. It's a promise.

- [StarTech.com](https://www.startech.com) is your one-stop source for every connectivity part you need. From the latest technology to legacy products — and all the parts that bridge the old and new — we can help you find the parts that connect your solutions.
- We make it easy to locate the parts, and we quickly deliver them wherever they need to go. Just talk to one of our tech advisors or visit our website. You'll be connected to the products you need in no time.
- Visit [www.startech.com](https://www.startech.com) for complete information on all [StarTech.com](https://www.startech.com) products and to access exclusive resources and time-saving tools.
- [StarTech.com](https://www.startech.com) is an ISO 9001 Registered manufacturer of connectivity and technology parts. [StarTech.com](https://www.startech.com) was founded in 1985 and has operations in the United States, Canada, the United Kingdom, and Taiwan servicing a worldwide market.

### **Frequently Asked Questions**

What is the StarTech PEXUSB3S4V PCI USB 3.0 Card?

The StarTech PEXUSB3S4V PCI USB 3.0 Card is an expansion card that adds four external USB 3.0 ports to your computer.

What are the key features of the StarTech PEXUSB3S4V card?

This card provides SuperSpeed USB 3.0 with up to 5 Gbps data bandwidth, a stacked port layout for space efficiency, and a built-in SATA power connector for additional power to USB devices.

Is it compatible with older USB 2.0 devices?

Yes, the StarTech PEXUSB3S4V PCI USB 3.0 Card is backward compatible with USB 2.0 devices, offering compatibility and versatility.

How do I install the StarTech PEXUSB3S4V card in my computer?

The installation process is explained in detail in the user manual, but it typically involves inserting the card into an available PCI Express slot and connecting it to your power supply.

Does it require any additional power source?

Yes, it has a built-in SATA power connector that can be connected to your computer's power supply for extra power to USB 3.0 devices.

What are the system requirements for using StarTech PEXUSB3S4V card card?

You need a PCI Express-enabled computer system with an available PCI Express slot and an available SATA power connector. It's compatible with various Windows operating systems.

How can I verify that the card is properly installed in Windows?

You can check in the Device Manager under Universal Serial Bus Controllers for the new entries related to the USB 3.0 controller card.

What is the warranty for the StarTech PEXUSB3S4V card?

This product comes with a two-year warranty, ensuring its reliability and quality.

Can StarTech PEXUSB3S4V card card work in small form factor or low-profile computer systems?

Yes, it can work in small form factor or low-profile systems, and it includes a low-profile installation bracket for such cases.

Is the StarTech PEXUSB3S4V card compatible with various PCI Express slot configurations?

Yes, it can work in different PCI Express slots, including x4, x8, or x16 slots.

What is the maximum data transfer rate for USB 3.0 on StarTech PEXUSB3S4V card card?

The StarTech PEXUSB3S4V card supports a maximum data transfer rate of 5 Gbps for USB 3.0, providing fast data transfer speeds.

What should I do if I encounter interference with my radio or television reception after installing StarTech PEXUSB3S4V card card?

If interference occurs, you can try reorienting or relocating the receiving antenna, increasing the separation between the equipment and the receiver, or consulting a professional technician for assistance.



Reference: [StarTech PEXUSB3S4V PCI USB 3.0 Card User Manual-device.report](#)

---

## References

- [User Manual](#)