

STARTECH ICUSB232SM3 USB TO RS232 ADAPTER



# StarTech ICUSB232SM3 USB to RS232 Adapter Instruction Manual

[Home](#) » [Support](#) » StarTech ICUSB232SM3 USB to RS232 Adapter Instruction Manual 

## Contents

- [1 StarTech ICUSB232SM3 USB to RS232 Adapter](#)
- [2 Packaging Contents](#)
- [3 System Requirements](#)
- [4 Installation](#)
  - [4.1 Verifying Installation](#)
- [5 Specifications](#)
- [6 Technical Support](#)
- [7 Warranty Information](#)
- [8 Frequently Asked Questions](#)
- [9 References](#)
- [10 Related Posts](#)

StarTech.com

**StarTech ICUSB232SM3 USB to RS232 Adapter**



## Packaging Contents

- 1 x USB to Serial Adapter Cable
- 2 x Cable Nut
- 1 x Instruction Manual

## System Requirements

- USB-enabled computer system with available USB port
- Windows® 8 (32/64bit), 7 (32/64), Vista (32/64), XP(32/64), 2000, ME, 98SE, CE 4.2, 5.2; Windows® Server 2008 R2, 2003(32/64); Mac OS 10.1, 10.4– 10.8; Linux 2.4.x – 3.9.x

## Installation

### Windows

1. Open a web browser and go to [www.startech.com/downloads](http://www.startech.com/downloads).
2. Enter your product ID (ICUSB232SM3) and click Search.
3. Select the product from the search results, and download the available Prolific\_PL2303.zip file.
4. Once downloaded, right-click the zip file and extract the contents.
5. Browse to the Windows folder and run the PL2303\_Prolific\_DriverInstaller application, following the on-screen instructions to complete the installation.
6. Connect the USB Serial cable to an available USB port.

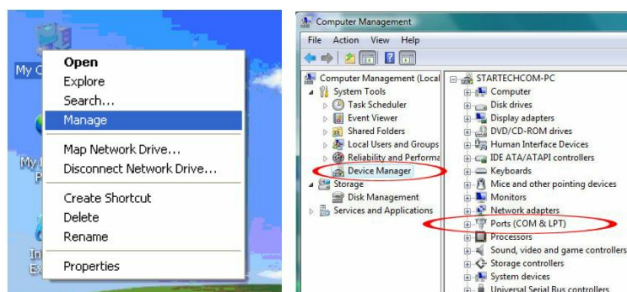
### Mac OS

1. Open a web browser and go to [www.startech.com/downloads](http://www.startech.com/downloads).
2. Enter your product ID (ICUSB232SM3) and click Search.
3. Select the product from the search results, and download the available Prolific\_PL2303.zip file.
4. Once downloaded, double-click the zip file to extract the contents.
5. Browse to the Mac folder and choose the appropriate folder for the version you are running.
6. Run the PL2303\_x.dmg application and follow the on-screen instructions to complete the installation.
7. Connect the USB Serial cable to an available USB port.

### Verifying Installation

#### Windows

From the main desktop, right-click on “My Computer” (“Computer” in Vista/7), then select Manage. In the new Computer Management window, select Device Manager from the left window panel.



Double-click on the “Ports (COM & LPT)” option. An additional COM port should be listed.

## Specifications

<b>Host Interface</b>	USB 1.1
<b>Chipset ID</b>	Prolific PL2303
<b>External Connectors</b>	1 x DB9 male 1 x USB type A male
<b>LEDs</b>	None
<b>Supported Protocols</b>	RS232
<b>Maximum Data Transfer Rate</b>	1 Mbps
<b>Buffer Size</b>	96 Byte Tx/Rx
<b>Operating Temperature</b>	-20°C ~ 80°C (-4°F ~ 176°F)
<b>Storage Temperature</b>	-20°C ~ 80°C (-4°F ~ 176°F)
<b>Humidity</b>	0% ~ 65% RH
<b>Cable Length</b>	915mm / 36in
<b>Weight</b>	42g
<b>Compatible Operating Systems</b>	Windows® 8 (32/64bit), 7 (32/64), Vista (32/64), XP(32/64), 2000, ME, 98SE, CE 4.2, 5.2 Windows® Server 2008 R2, 2003(32/64) Mac OS 10.1, 10.4– 10.8 Linux 2.4.x – 3.9.x

## FCC Compliance Statement

This equipment has been tested and found to comply with the limits for a Class B digital device, under part 15 of the FCC Rules. These limits are designed to provide reasonable protection against harmful interference in a residential installation. This equipment generates, uses, and can radiate radio frequency energy and, if not installed and used by the instructions, may cause harmful interference to radio communications. However, there is no guarantee that interference will not occur in a particular installation. If this equipment does cause harmful interference to radio or television reception, which can be determined by turning the equipment off and on, the user is encouraged to try to correct the interference by one or more of the following measures:

- Reorient or relocate the receiving antenna.
- Increase the separation between the equipment and the receiver.
- Connect the equipment to an outlet on a circuit different from that to which the receiver is connected.
- Consult the dealer or an experienced radio/TV technician for help.

## **Use of Trademarks, Registered Trademarks, and other Protected Names and Symbols**

This manual may refer to trademarks, registered trademarks, and other protected names and/or symbols of third-party companies not related in any way to [StarTech.com](http://StarTech.com). Where they occur these references are for illustrative purposes only and do not represent an endorsement of a product or service by [StarTech.com](http://StarTech.com), or an endorsement of the product(s) to which this manual applies by the third-party company in question. Regardless of any direct acknowledgment elsewhere in the body of this document, StarTech.com hereby acknowledges that all trademarks, registered trademarks, service marks, and other protected names and/or symbols contained in this manual and related documents are the property of their respective holders.

## **Technical Support**

[StarTech.com](http://StarTech.com)'s lifetime technical support is an integral part of our commitment to providing industry-leading solutions. If you ever need help with your product, visit [www.startech.com/support](http://www.startech.com/support) and access our comprehensive selection of online tools, documentation, and downloads.

For the latest drivers/software, please visit [www.startech.com/downloads](http://www.startech.com/downloads)

## **Warranty Information**

**This product is backed by a lifetime warranty.**

In addition, [StarTech.com](http://StarTech.com) warrants its products against defects in materials and workmanship for the periods noted, following the initial date of purchase. During this period, the products may be returned for repair, or replacement with equivalent products at our discretion. The warranty covers parts and labor costs only. [StarTech.com](http://StarTech.com) does not warrant its products from defects or damages arising from misuse, abuse, alteration, or normal wear and tear.

## **Limitation of Liability**

In no event shall the liability of [StarTech.com](http://StarTech.com) Ltd. and [StarTech.com](http://StarTech.com) USA LLP (or their officers, directors, employees or agents) for any damages (whether direct or indirect, special, punitive, incidental, consequential, or otherwise), loss of profits, loss of business, or any pecuniary loss, arising out of or related to the use of the product exceed the actual price paid for the product. Some states do not allow the exclusion or limitation of incidental or consequential damages. If such laws apply, the limitations or exclusions contained in this statement may not apply to you.

For the most up-to-date information, please visit: [www.startech.com](http://www.startech.com)

## **Frequently Asked Questions**

What are the system requirements for using the StarTech ICUSB232SM3 USB to RS232 Adapter?

You will need a USB-enabled computer system with an available USB port. The adapter is compatible with various operating systems, including Windows, Mac OS, and Linux.

What is the FCC Compliance Statement for the StarTech ICUSB232SM3 USB to RS232 Adapter?

The FCC Compliance Statement certifies that the product complies with FCC Rules and provides guidance on addressing potential interference issues.

What is the warranty information for the StarTech ICUSB232SM3 USB to RS232 Adapter?

The product is backed by a lifetime warranty, and it is also warranted against defects in materials and workmanship for specified periods. Details about warranty coverage are provided.

What are the limitations of liability for the StarTech ICUSB232SM3 USB to RS232 Adapter?

The limitations of liability are described, including the maximum liability in case of damages, and it also provides information on the applicability of state laws regarding limitations.

Can I use the StarTech ICUSB232SM3 USB to RS232 Adapter on a computer with a USB-C port?

The ICUSB232SM3 is designed for USB Type-A ports. To use it with a computer that has USB-C, you may need a USB-C to USB-A adapter or cable.

Does the StarTech ICUSB232SM3 USB to RS232 Adapter require any additional drivers for Linux operating systems?

The adapter is compatible with Linux 2.4.x – 3.9.x. While it should work without additional drivers on many Linux distributions, you may need to verify the compatibility with your specific Linux version.

Can I use multiple ICUSB232SM3 adapters on the same computer simultaneously?

Yes, you can use multiple ICUSB232SM3 adapters on the same computer if you have enough available USB ports. Each adapter will typically be assigned a unique COM port.

Is the StarTech ICUSB232SM3 USB to RS232 Adapter compatible with 64-bit versions of Windows operating systems?

Yes, the adapter is compatible with both 32-bit and 64-bit versions of Windows operating systems.

What is the purpose of the cable nuts included in the packaging of the ICUSB232SM3 adapter?

The cable nuts are provided to secure the adapter's connection and prevent accidental disconnection.

Can I use the StarTech ICUSB232SM3 USB to RS232 Adapter with industrial or ruggedized equipment?

The ICUSB232SM3 is designed for general-purpose use and may not be suitable for industrial or ruggedized applications. For such environments, consider specialized adapters designed for industrial use.

Does the StarTech ICUSB232SM3 USB to RS232 Adapter support hardware flow control (RTS/CTS)?

The adapter supports hardware flow control, including RTS/CTS (Request to Send/Clear to Send) signaling, which can be configured in compatible software applications.

Is the StarTech ICUSB232SM3 USB to RS232 Adapter compatible with virtualization software such as VMware or VirtualBox?

The adapter is generally compatible with virtualization software, but its functionality may depend on the host system's USB passthrough capabilities and the specific virtualization software settings.

**Reference:** [StarTech ICUSB232SM3 USB to RS232 Adapter Instruction Manual-device.report](#)

---

## References

- [User Manual](#)