

StarTech.com  
Hard-to-find made easy®  
**USB433ACD1X1**  
**Wireless-802.11b**  
**AC-USB-Adapter**



# StarTech com USB433ACD1X1 Wireless 802.11b AC USB Adapter Installation Guide

[Home](#) » [StarTech.com](#) » StarTech com USB433ACD1X1 Wireless 802.11b AC USB Adapter Installation Guide 

## Contents

- [1 StarTech com USB433ACD1X1 Wireless 802.11b AC USB Adapter](#)
- [2 Product Information](#)
- [3 Product Usage Instructions](#)
- [4 Driver Installation](#)
- [5 Using WPS Connect](#)
- [6 RF Exposure Information](#)
- [7 Documents / Resources](#)
  - [7.1 References](#)
- [8 Related Posts](#)

StarTech.com  
Hard-to-find made easy®

**StarTech com USB433ACD1X1 Wireless 802.11b AC USB Adapter**



## Product Information

**Product Name:** Wireless 802.11b/g/n/a/ac USB Adapter

**Model Number:** PMN: USB433ACD1X1

## Specifications

- **Wireless Standards:** 802.11b/g/n/a/ac
- **Interface:** USB 2.0
- **Operating System Compatibility:** Windows Vista, Windows 7

## Product Usage Instructions

### Driver Installation

1. Insert the USB wireless network card into an empty USB 2.0 port of your computer when the computer is switched on. Never use force to insert the card.
2. Click 'Cancel/Close' when the message appears on your computer.
3. Insert the driver CD into your CD-ROM and click 'Install Driver' to start the installation procedure
4. Follow the installation descriptions shown and click 'Finish' to complete the installation of driver files.
5. After installation, a new icon will appear near the system tray for wireless network configuration utility.

### Connect to Wireless Access Point

**To connect to a wireless access point, follow these steps:**

1. Using Client Utility:

1. Left-click the Client Configuration utility icon located at the lower-right corner of the computer desktop.
2. Click the 'Available Network' menu to search for wireless access points nearby.
3. Select the desired wireless access point and input the password if required.
4. Wait for the network card to connect to the access point. Once 'Status' becomes 'Associated', your computer is connected. Click 'Close' to close the configuration menu.

## FAQ

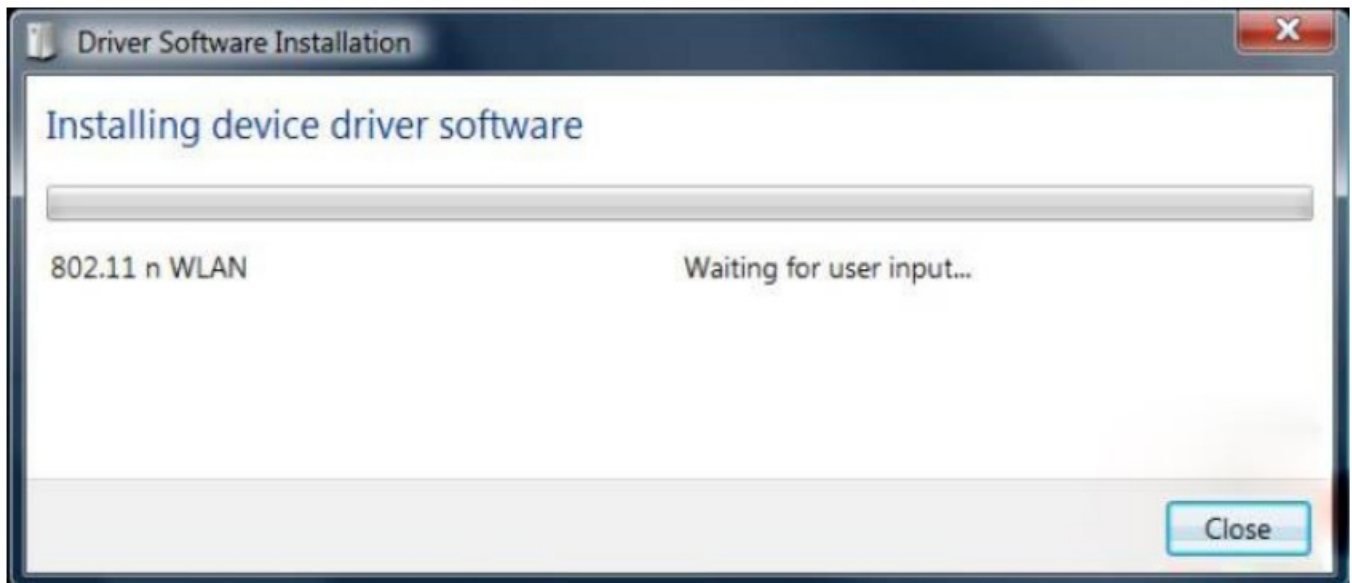
- **Q: What should I do if I encounter connection issues after following the instructions?**
  - **A:** If you experience connection drops, please verify security settings and ensure correct password entry.

## Driver Installation

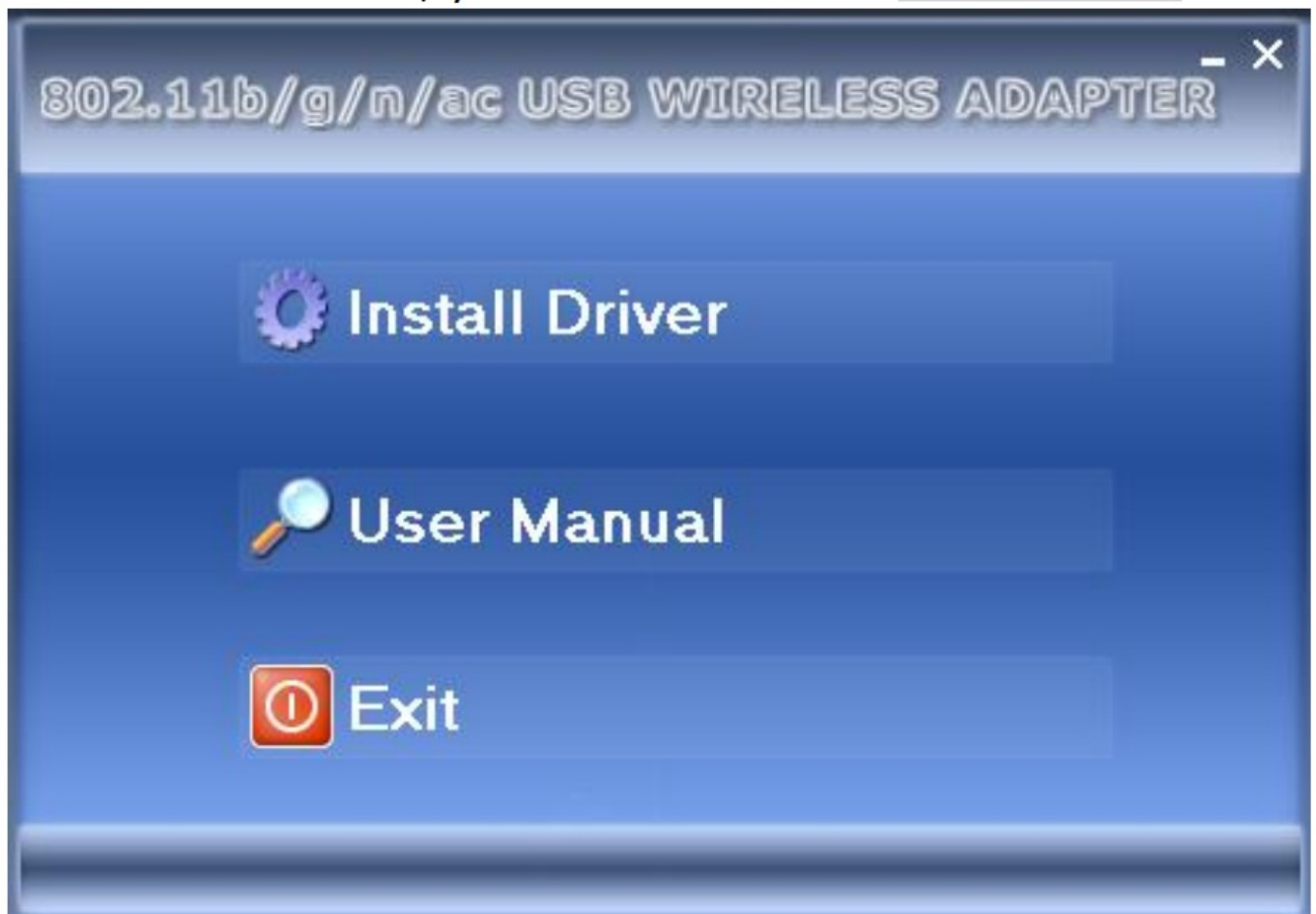
Insert the USB wireless network card into an empty USB 2.0 port of your computer when the computer is switched on. Never use force to insert the card, if you feel it's stuck, flip the card over and try again. 1.2 The following message will appear on your computer, click cancel / Close'.

**Under Windows Vista and Windows 7**

## Under Windows Vista and Windows 7



Insert the driver CD into your CD-ROM. You can see autorun screen below. if not, you can double-click 'autorun.exe' on CD.



Click 'Install Driver' to start the installation procedure

Installation descriptions are shown. Click 'Finish' to finish the installation of driver files.



**A new icon will appear near the clock of the system tray:**

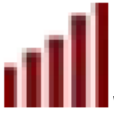


Left-click the icon will launch the wireless network configuration utility, and you can right-click the icon to show the quick menu of the configuration utility.

**This icon also uses a different color to show the status of the wireless connection:**



Wireless connection establishes good signal reception.



Wireless connection is established weak signal reception.



The connection is not established yet.



The wireless network card is not detected. For detailed instructions of wireless network configuration utility, please see the next chapter.

### **Connect to Wireless Access Point**

To use the wireless network, you have to connect to a wireless access point first. You can either use Client utility (comes with network card driver), or Windows Zero Config utility (comes with Windows operating system).

#### **Using Client Utility**

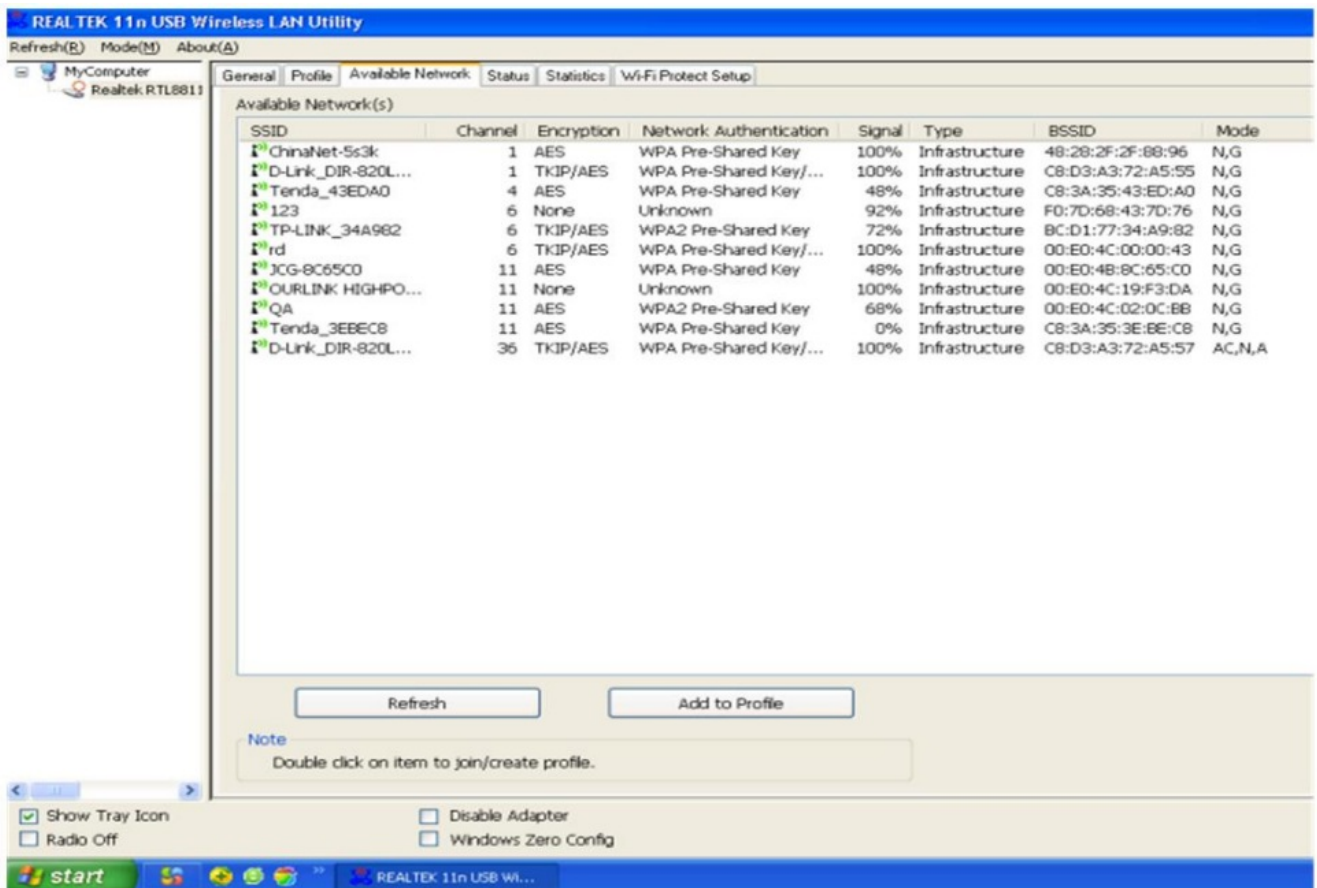
Please follow the following instructions to use the Client configuration utility to connect to a wireless access point.

1. Left-click the Client configuration utility icon located at the lower-right corner of the computer desktop and the configuration menu will appear:



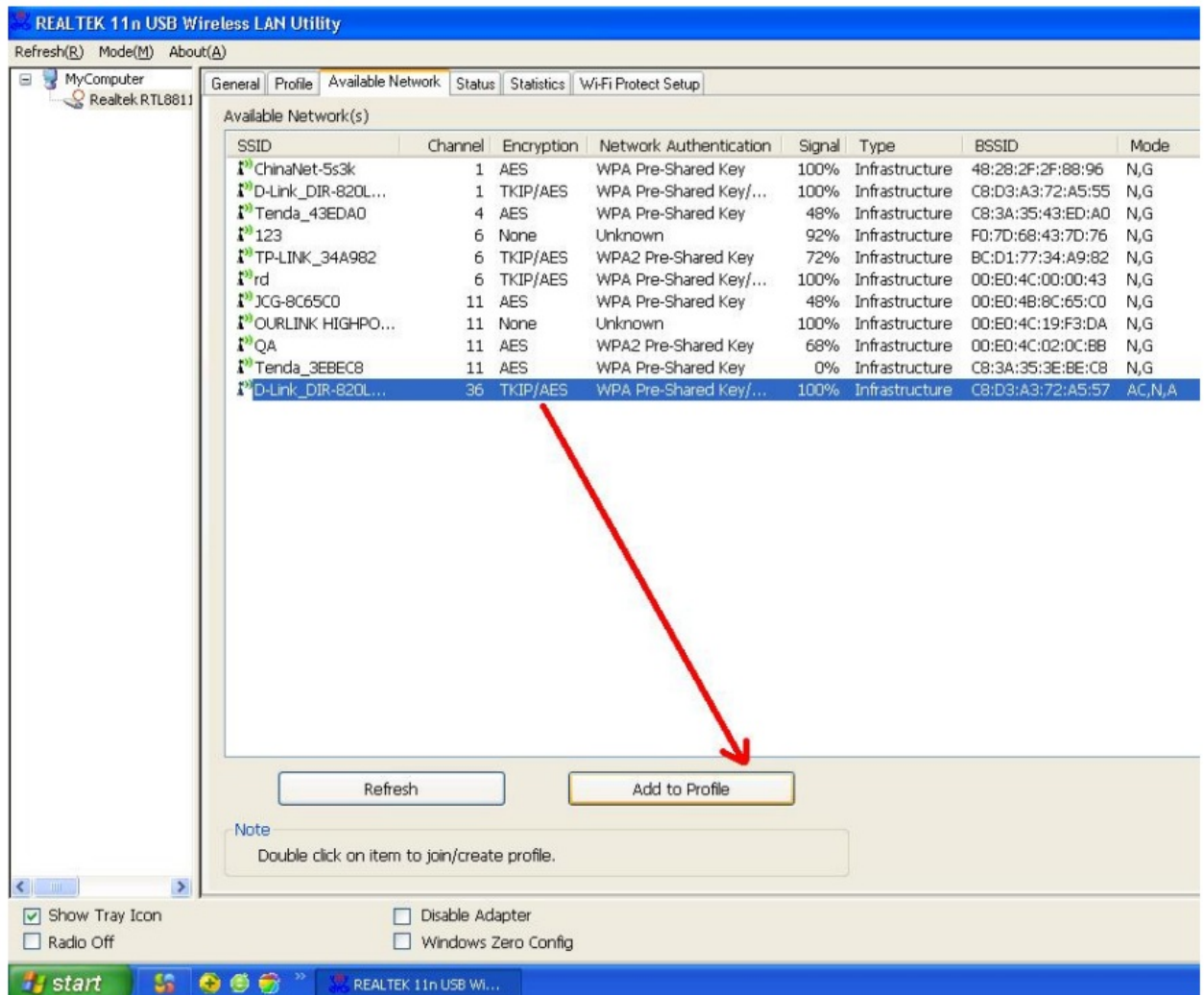
**HERE!**

2. Wireless utility will appear. Click the 'Available Network' menu to search for wireless access points nearby.



3. Please wait for a while, and all wireless access points that can be reached by this wireless network card will be displayed here.
  - If the wireless access point you wish to connect does not appear here, you can click the 'Refresh' button to scan for wireless access points again; if the wireless access point you're looking for still not appear, try to move the computer closer. When the access point you're looking for is on the list, left-click it and then double-click it or click 'Add to Profile'.





4. If a password (Network Key) is required to access the wireless access point, please input it in 'Network key' (and input it again in 'Confirm network key' for confirmation). Click 'OK' when the password is properly inputted.
5. The network card will attempt to connect to the access point now, This requires few seconds to minutes, so please be patient. When the 'status' becomes 'Associated', your computer is connected to the access point you selected. Click 'Close' to close the configuration menu.



REALTEK 11n USB Wireless LAN Utility

Refresh(R) Mode(M) About(A)

### Wireless Network Properties:

Profile Name: D-Link\_DIR-820LW-5G

Network Name(SSID): D-Link\_DIR-820LW-5G

☐ This is a computer-to-computer(ad hoc) network; wireless access points are not used.

Channel: 36 (5180MHz)

**Wireless network security**

This network requires a key for the following:

Network Authentication: WPA2-PSK

Data encryption: AES

☐ ASCII ☐ PASSPHRASE

Key index (advanced): 1

**Network key:**

\*\*\*\*\*

**Confirm network key:**

\*\*\*\*\*

**802.1x configure**

EAP TYPE : GTC

Tunnel : Provision Mode :

Username :

Identity :

Domain :

Password :

Certificate :

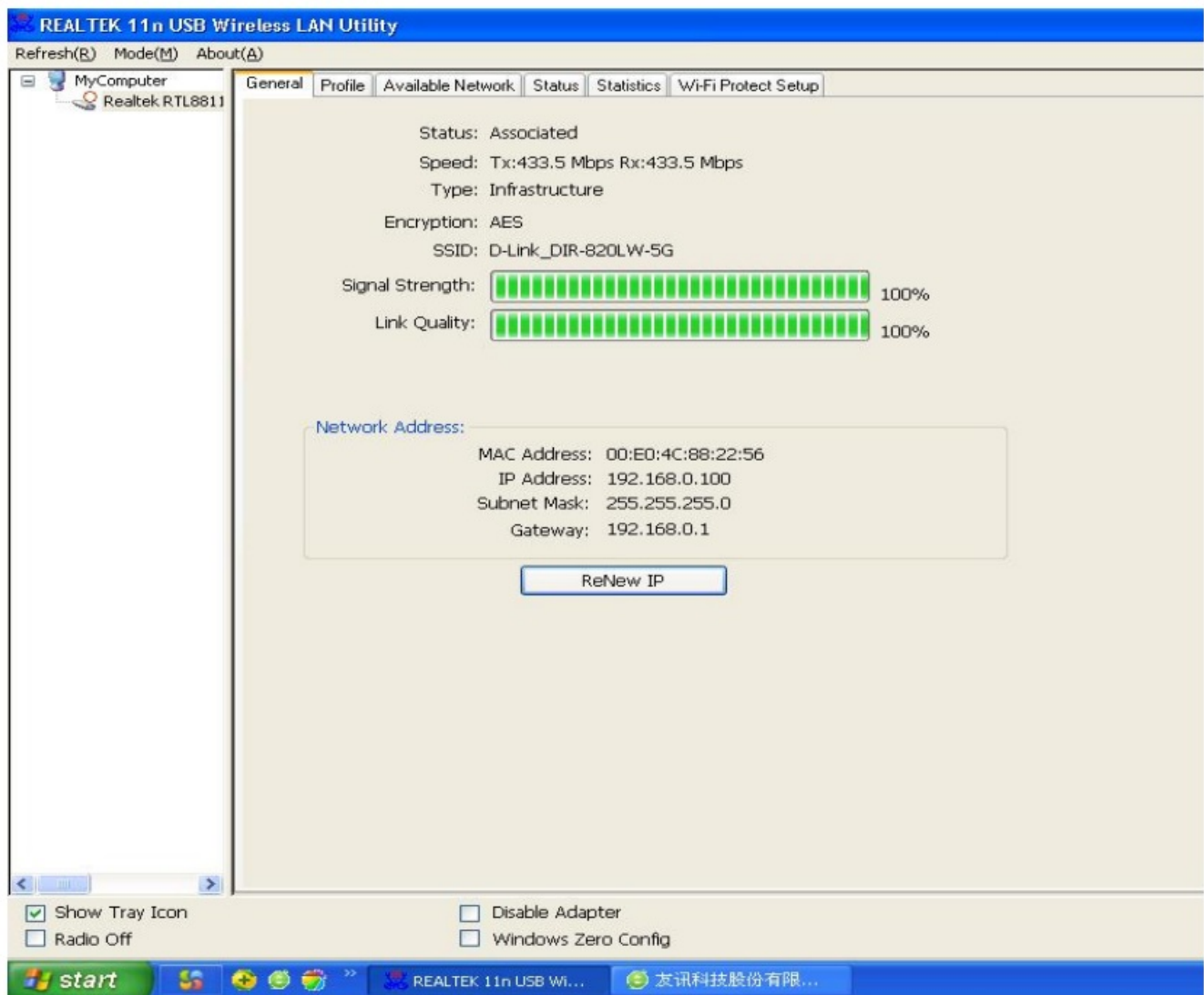
☐ PAC : ☐ Auto Select PAC

OK Cancel

☒ Show Tray Icon ☐ Disable Adapter

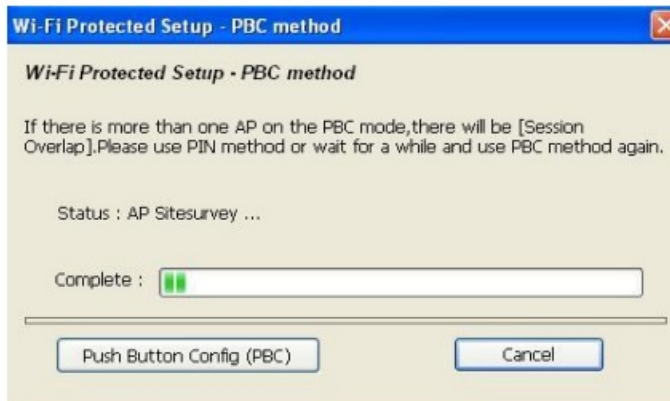
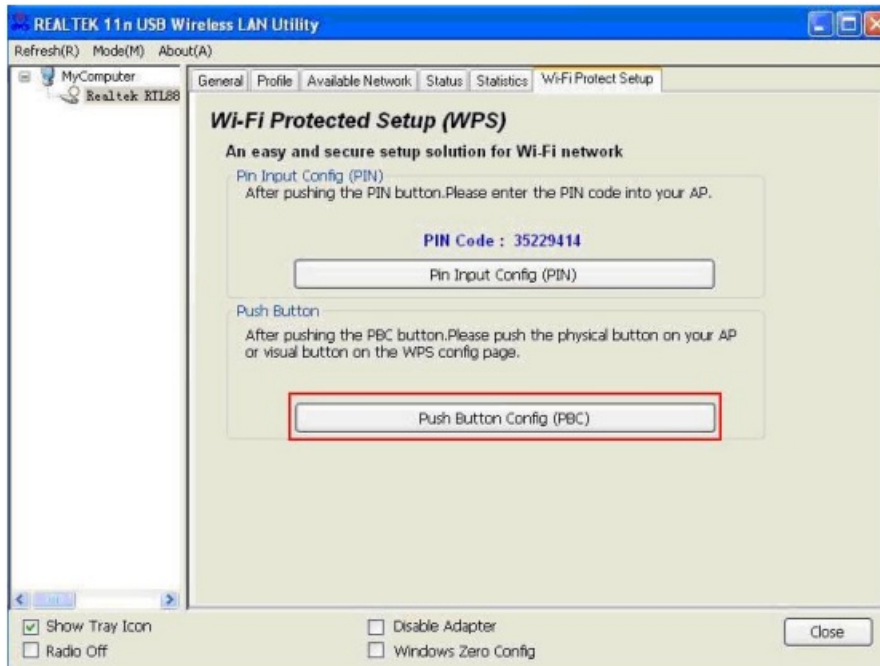
☐ Radio Off ☐ Windows Zero Config

Close



**NOTE:** If you connected to an access point but the connection has been dropped soon, please check security settings and re-check password spelling.

## Using WPS Connect



Click “Push Button Config(PBC)” a message box will appear:

Please activate the Push-Button function on the wireless access point now, and the wireless network card will establish a secure connection with the access point within one minute.

## FCC Statement

This equipment has been tested and found to comply with the limits for a Class B digital device, pursuant to part 15 of the FCC Rules.

These limits are designed to provide reasonable protection against harmful interference in a residential installation. This equipment generates, uses and can radiate radio frequency energy and, if not installed and used in accordance with the instructions, may cause harmful interference to radio communications. However, there is no guarantee that interference will not occur in a particular installation. If this equipment does cause harmful interference to radio or television reception, which can be determined by turning the equipment off and on, the user is encouraged to try to correct the interference by one or more of the following measures:

- Reorient or relocate the receiving antenna.
- Increase the separation between the equipment and the receiver.
- Connect the equipment into an outlet on a circuit different from that to which the receiver is connected.
- Consult the dealer or an experienced radio/TV technician for help.

**Caution:** Any changes or modifications to this device not explicitly approved by the manufacturer could void your authority to operate this equipment.

This device complies with part 15 of the FCC Rules. Operation is subject to the following two conditions: (1) This device may not cause harmful interference, and (2) this device must accept any interference received, including interference that may cause undesired operation.

## **RF Exposure Information**

The device has been evaluated to meet general RF exposure requirements. The device can be used in portable exposure conditions without restriction.

### **Specific Absorption Rate (SAR) information:**

This Communicator meets the government's requirements for exposure to radio waves. The guidelines are based on standards that were developed by independent scientific organizations through periodic and thorough evaluation of scientific studies. The standards include a substantial safety margin designed to assure the safety of all persons regardless of age or health. FCC RF Exposure Information and Statement the SAR limit of USA (FCC) is 1.6 W/kg averaged over one gram of tissue. Device types: Communicator has also been tested against this SAR limit. This device was tested for typical body-worn operations with the back of the phone kept 0mm from the body. To maintain compliance with

FCC RF exposure requirements, use accessories that maintain an 0mm separation distance between the user's body and the back of the phone. The use of belt clips, holsters and similar accessories should not contain metallic components in its assembly. The use of accessories that do not satisfy these requirements may not comply with FCC RF exposure requirements and should be avoided.

## **ISED Statement**

This device contains license-exempt transmitter(s)/receiver(s) that comply with Innovation, Science and

Economic Development Canada's license-exempt RSS(s). Operation is subject to the following two conditions:

1. This device may not cause interference.
2. This device must accept any interference, including interference that may cause undesired operation of the device.

The digital apparatus complies with Canadian CAN ICES-3 (B)/NMB-3(B).

This device meets the exemption from the routine evaluation limits in section 2.5 of RSS 102 and compliance with RSS 102 RF exposure, users can obtain Canadian information on RF exposure and compliance.

This equipment complies with Canada's radiation exposure limits set forth for an uncontrolled environment.

The device for operation in the band 5150-5250 MHz is only for indoor use to reduce the potential for harmful interference to co-channel mobile satellite systems.

## **RF Exposure Statement**

The device has been evaluated to meet general RF exposure requirements. The device can be used in portable exposure conditions without restriction.

Specific Absorption Rate (SAR) information:

This USB meets the government’s requirements for exposure to radio waves. The guidelines are based on standards that were developed by independent scientific organizations through periodic and thorough evaluation of scientific studies. The standards include a substantial safety margin designed to assure the safety of all persons regardless of age or health. ISED RF Exposure Information and Statement The SAR limit of Canada(ISED) is 1.6 W/kg averaging over one gram of tissue. Device types: USB has also been tested against this SAR limit. This device was tested for typical body-worn operations with the back of the USB kept 0mm from the body. To maintain compliance with ISED RF exposure requirements, use accessories that maintain an 0mm separation distance between the user’s body and the back of the USB. The use of belt clips, holsters and similar accessories should not contain metallic components in its assembly. The use of accessories that do not satisfy these requirements may not comply with ISED RF exposure requirements and should be avoided.

This radio transmitter has been approved by Industry Canada to operate with the antenna types listed with the maximum permissible gain indicated. Antenna types not included in this list, having again greater than the maximum gain indicated for that type, are strictly prohibited for use with this device.

Documents / Resources

<div><div>Wireless 802.11b/g/n/ac USB Adapter</div><div>P/N: USB433ACD1X1</div><div>Quick Installation Guide</div></div>	<div><a href="#">StarTech.com USB433ACD1X1 Wireless 802.11b AC USB Adapter</a> [pdf] Installation Guide USB433ACD1X1, USB433ACD1X1 Wireless 802.11b AC USB Adapter, Wireless 802.11b AC U SB Adapter, 802.11b AC USB Adapter, AC USB Adapter, USB Adapter, Adapter</div>
--	--

References

- [User Manual](#)

[Manuals+](#), [Privacy Policy](#)

This website is an independent publication and is neither affiliated with nor endorsed by any of the trademark owners. The "Bluetooth®" word mark and logos are registered trademarks owned by Bluetooth SIG, Inc. The "Wi-Fi®" word mark and logos are registered trademarks owned by the Wi-Fi Alliance. Any use of these marks on this website does not imply any affiliation with or endorsement.