



StarTech com SATDOCKU3S SATA HDD Docking Station User Manual

[Home](#) » [StarTech.com](#) » StarTech com SATDOCKU3S SATA HDD Docking Station User Manual 

Contents

- [1 StarTech com SATDOCKU3S SATA HDD Docking Station](#)
- [2 Introduction](#)
- [3 Packaging Contents](#)
- [4 System Requirements](#)
- [5 Front View](#)
- [6 Rear View](#)
- [7 Installation](#)
- [8 Specifications](#)
- [9 Technical Support](#)
- [10 Warranty Information](#)
- [11 Documents / Resources](#)
 - [11.1 References](#)
- [12 Related Posts](#)

StarTech.com

StarTech com SATDOCKU3S SATA HDD Docking Station



Introduction

The StarTech.com SATDOCKU3S USB 3.0 Hard Drive Docking Station delivers full and instant access to any 2.5" or 3.5" SATA hard drive (SATA 1.5/3.0Gbps), without having to mount the drive inside a computer or install it into an external enclosure. Connected through a single USB 3.0 SuperSpeed or USB 2.0 HighSpeed connection, the hard drive docking station provides a convenient, plug-and-play storage solution.

Packaging Contents

- 1 x USB 3.0 HDD dock
- 1 x USB 3.0 cable
- 1 x universal power adapter (NA/JP, EU, UK, ANZ)
- 1 x instruction manual

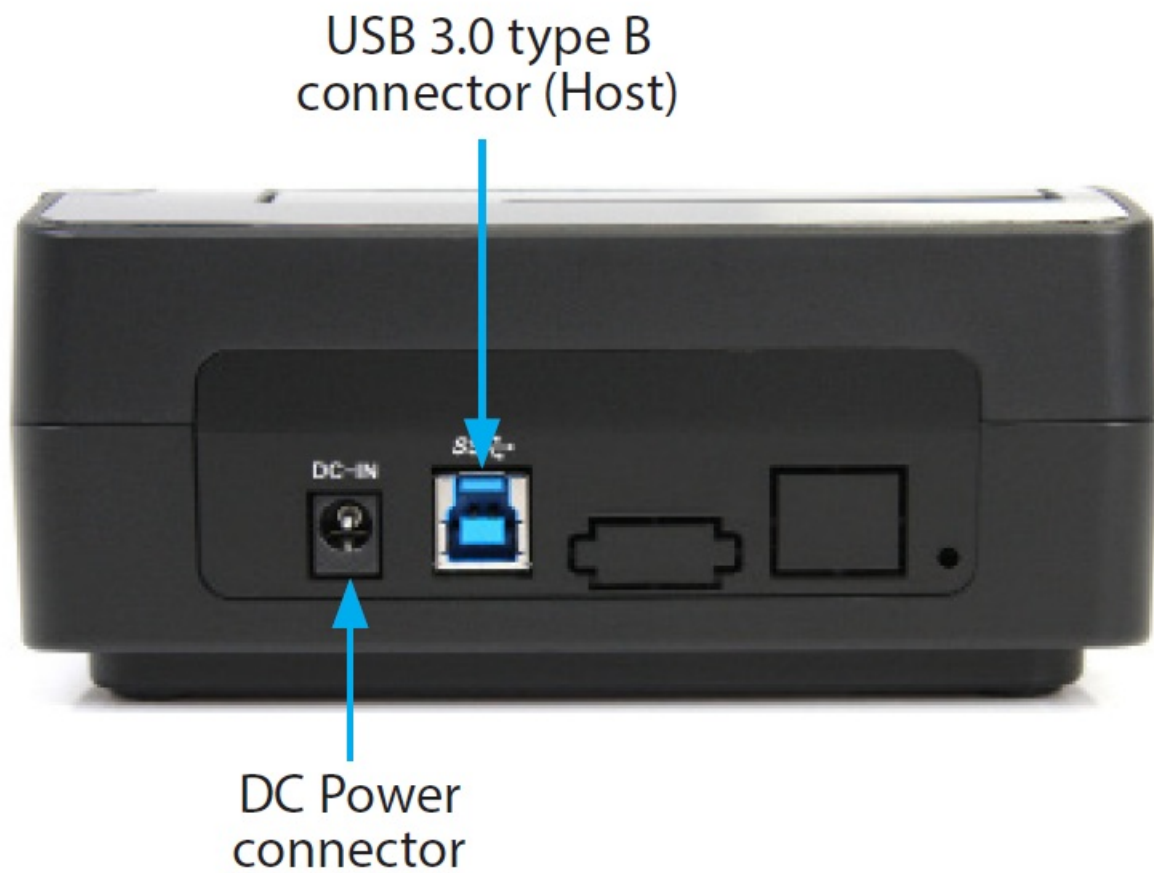
System Requirements

- USB enabled computer system with available port
- 2.5" or 3.5" SATA drive

Front View



Rear View



Installation

WARNING: Hard drives require careful handling, especially when being transported. If you are not careful with your hard disk, lost data may result. Always handle storage devices with caution.

Hardware Installation

1. Connect the external power adapter from the hard drive dock to a power outlet.
2. Insert a 2.5" or 3.5" hard drive into the top loading slot. Make sure that the connectors on the hard drive are facing the same corner of the slot that has a cutout in the door. The label on the hard drive should face the front of the hard drive dock.
3. Connect the included USB cable from the hard drive dock to an available USB port on the computer system. The computer can be on or off.
NOTE: A USB 2.0 A-B cable could also be used on the hard drive dock but will be restricted to USB 2.0 speeds.
4. Press the power button on the top of the hard drive dock. The Power LED under the power button should light up.
5. To remove the hard drive, make sure it is currently not being accessed by the computer then unmount or uninstall the disk drive from the operating system (see documentation for your operating system). Press the power button to turn off the hard drive dock and wait for the drive to power down. Press the drive ejection button on the top of the hard drive dock to release the drive. Then pull the drive from the slot.

Driver Installation

Windows 2000/XP/Vista/7/8 and Linux No driver installation is required for these operating systems, as this hard drive dock is natively supported, so the drivers are already installed.

Using the Storage Device

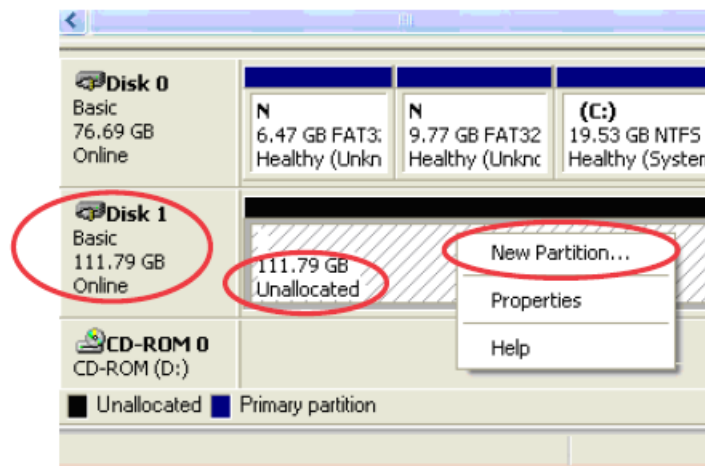
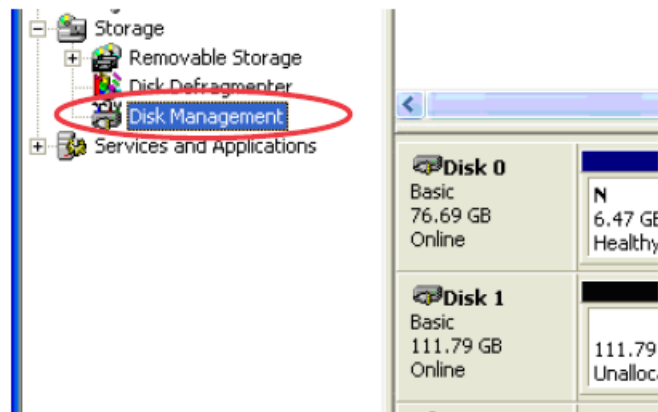
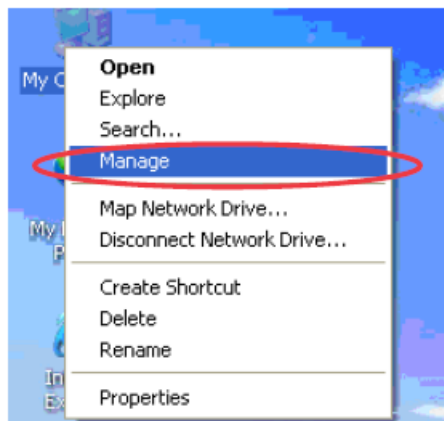
Windows 2000/XP/Vista/7/8

If you are using a brand new hard drive that does not contain any data, then you will first need to prepare the hard drive for use. From the main desktop, right-click on "My Computer" ("Computer" in Vista/7/8), then select Manage. In the new Computer Management window, select Disk Management from the left window panel. Locate the Disk that says it is "Unallocated" (check hard drive capacity to confirm it's the correct hard drive) and then right-click in the section that says "Unallocated" and select "New Partition".

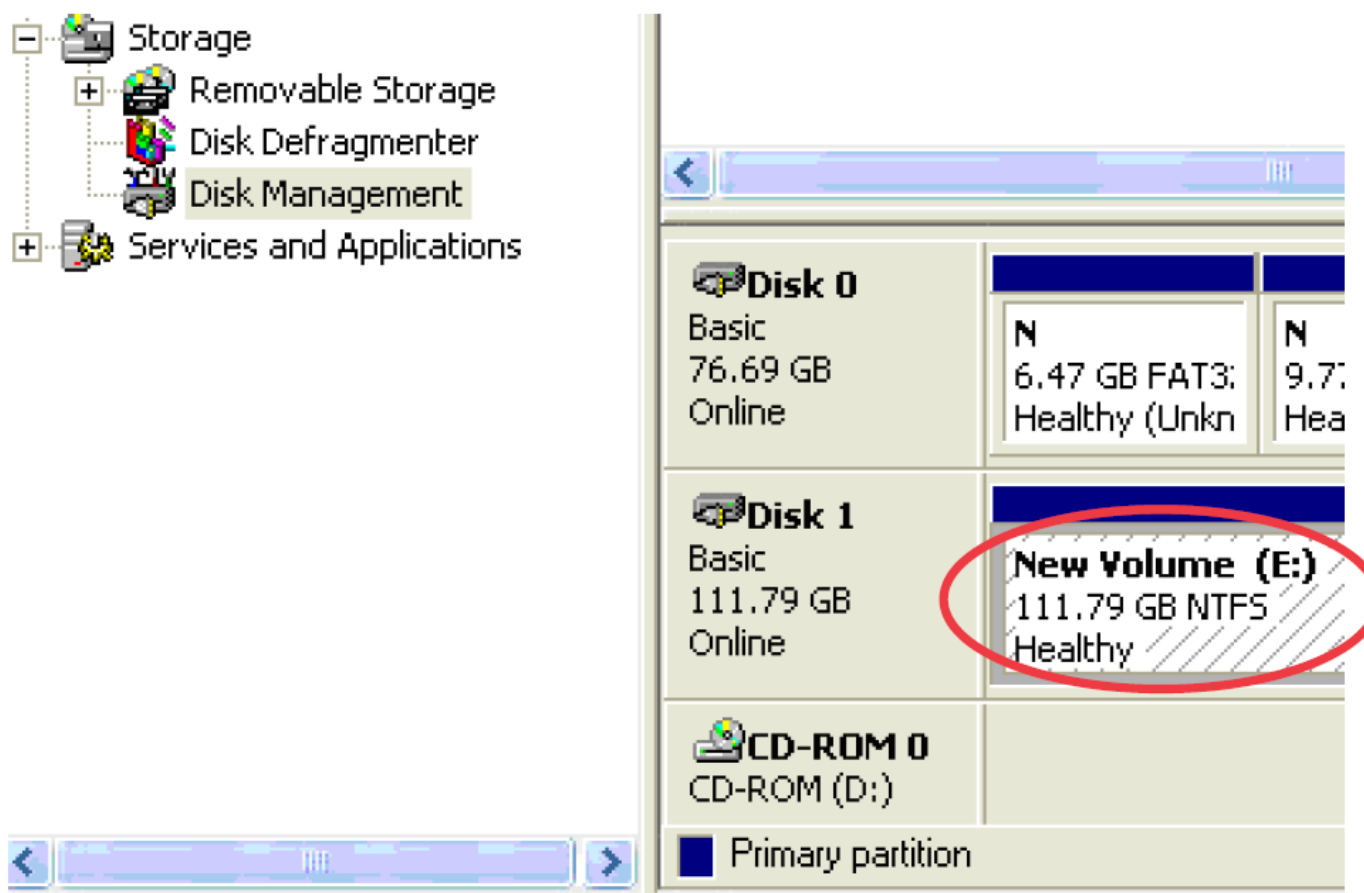
Using the Storage Device

Windows 2000/XP/Vista/7/8

If you are using a brand new hard drive that does not contain any data, then you will first need to prepare the hard drive for use. From the main desktop, right-click on "My Computer" ("Computer" in Vista/7/8), then select Manage. In the new Computer Management window, select Disk Management from the left window panel. Locate the Disk that says it is "Unallocated" (check hard drive capacity to confirm it's the correct hard drive) and then right-click in the section that says "Unallocated" and select "New Partition".



The New Partition Wizard will appear. Follow the instructions in the wizard to complete setting up the drive. Once complete, the Disk should show up as “Healthy” with a drive letter assigned (i.e. E:). This drive letter should now appear within My Computer. If you are installing a hard drive that already has data on it, then after plugging it in, the drive should automatically show up with a drive letter assigned within My Computer.



Specifications

Bus Interface	USB 3.0
Connectors	1 x USB 3.0 type-B 1 x DC Power
LEDs	1 x Power/Activity
Maximum Data Transfer Rate	USB 3.0: 5Gbps
Compatible Hard Drives	2.5in/3.5in SATA hard disk drives or solid state drives
Power Adapter	12VDC, 2.5A, center positive
Dimensions	145.0mm x 93.0mm x 65.0mm
Weight	410g

Technical Support

StarTech.com's lifetime technical support is an integral part of our commitment to provide industry-leading solutions. If you ever need help with your product, visit www.startech.com/support and access our comprehensive selection of online tools, documentation, and downloads. For the latest drivers/software, please visit www.startech.com/downloads

Warranty Information

This product is backed by a two year warranty. In addition, StarTech.com warrants its products against defects in materials and workmanship for the periods noted, following the initial date of purchase. During this period, the products may be returned for repair, or replacement with equivalent products at our discretion. The warranty covers parts and labor costs only. StarTech.com does not warrant its products from defects or damages arising from misuse, abuse, alteration, or normal wear and tear.

Limitation of Liability

In no event shall the liability of StarTech.com Ltd. and StarTech.com USA LLP (or their officers, directors, employees or agents) for any damages (whether direct or indirect, special, punitive, incidental, consequential, or otherwise), loss of profits, loss of business, or any pecuniary loss, arising out of or related to the use of the product exceed the actual price paid for the product. Some states do not allow the exclusion or limitation of incidental or consequential damages. If such laws apply, the limitations or exclusions contained in this statement may not apply to you.

Hard-to-find made easy. At StarTech.com, that isn't a slogan.

It's a promise.

StarTech.com is your one-stop source for every connectivity part you need. From the latest technology to legacy products — and all the parts that bridge the old and new — we can help you find the parts that connect your solutions. We make it easy to locate the parts, and we quickly deliver them wherever they need to go. Just talk to one of our tech advisors or visit our website. You'll be connected to the products you need in no time. Visit www.startech.com for complete information on all StarTech.com products and to access exclusive resources and time-saving tools. StarTech.com is an ISO 9001 Registered manufacturer of connectivity and technology parts. StarTech.com was founded in 1985 and has operations in the United States, Canada, the United Kingdom and Taiwan servicing a worldwide market.

Reviews

Share your experiences using StarTech.com products, including product applications and setup, what you love about the products, and areas for improvement.

StarTech.com Ltd

45 Artisans Crescent London, Ontario N5V 5E9 Canada|

StarTech.com LLP

4490 South Hamilton Road Groveport, Ohio 43125 U.S.A.


StarTech.com Ltd.

Unit B, Pinnacle 15 Gowerton Road Brackmills, Northampton NN4 7BW United Kingdom

StarTech.com Ltd.

Siriusdreef 17-27B 2132 WT Hoofddorp The Netherlands

Documents / Resources

	<p>StarTech.com SATDOCKU3S SATA HDD Docking Station [pdf] User Manual SATDOCKU3S, SATA HDD Docking Station, HDD Docking Station, SATA Docking Station, Docking Station, Station</p>
---	---

References

- [!\[\]\(eae20f1adff742df783f6f7e3bbe72d1_img.jpg\) Unsere Produkte dienen IT- und A/V-Profis zum Verbinden, Konvertieren, Erweitern, Splitten und Switchen | Deutschland](#)
- [!\[\]\(43c6e08c5a1618d745b54da5c843274e_img.jpg\) StarTech.com conçoit et fabrique une vaste sélection de pièces d'ordinateur, de câbles, de commutateur KVM, de racks... | France](#)
- [!\[\]\(f5ee48910650695cea680b2433c1d60d_img.jpg\) Pezzi per computer, cavi, switch KVM, server rack e soluzioni per reti | Italia](#)
- [!\[\]\(da0f02caffeb5a74776a1d5d1892b059_img.jpg\) IT & A / V](#)
- [!\[\]\(edb096eed27f3ac1241ba8d18d05acad_img.jpg\) StarTech.com ontwerpt en produceert een enorme selectie computeronderdelen, kabels, KVM-switches, serverracks en... | Nederland](#)
- [!\[\]\(554d866cfdb5a2c8f73998019542d337_img.jpg\) StarTech.com | IT Pro's Trusted Source for Connectivity Accessories | Europe](#)
- [!\[\]\(c1170582320733ace24db86bc6d97423_img.jpg\) StarTech.com | IT Pro's Trusted Source for Connectivity Accessories](#)
- [!\[\]\(51c4b897e692428305845816e97ca71e_img.jpg\) StarTech.com | IT Pro's Trusted Source for Connectivity Accessories](#)
- [!\[\]\(810c0da19263e18e2f95623517bed1dc_img.jpg\) Drivers & Downloads | StarTech.com Support](#)
- [!\[\]\(8982e3c27257070d79f8096c6d667915_img.jpg\) StarTech.com Support](#)

Manuals+.