




StarTech.com PEXUSB312C3 2-Port 10Gbps USB C PCIe Card Adapter User Guide

[Home](#) » [StarTech.com](#) » StarTech.com PEXUSB312C3 2-Port 10Gbps USB C PCIe Card Adapter User Guide 

Contents

- [1 StarTech.com PEXUSB312C3 2-Port 10Gbps USB C PCIe Card Adapter](#)
- [2 Product Information](#)
- [3 Installation](#)
- [4 FCC Compliance Statement](#)
- [5 Warranty Information](#)
- [6 Documents / Resources](#)
 - [6.1 References](#)
- [7 Related Posts](#)



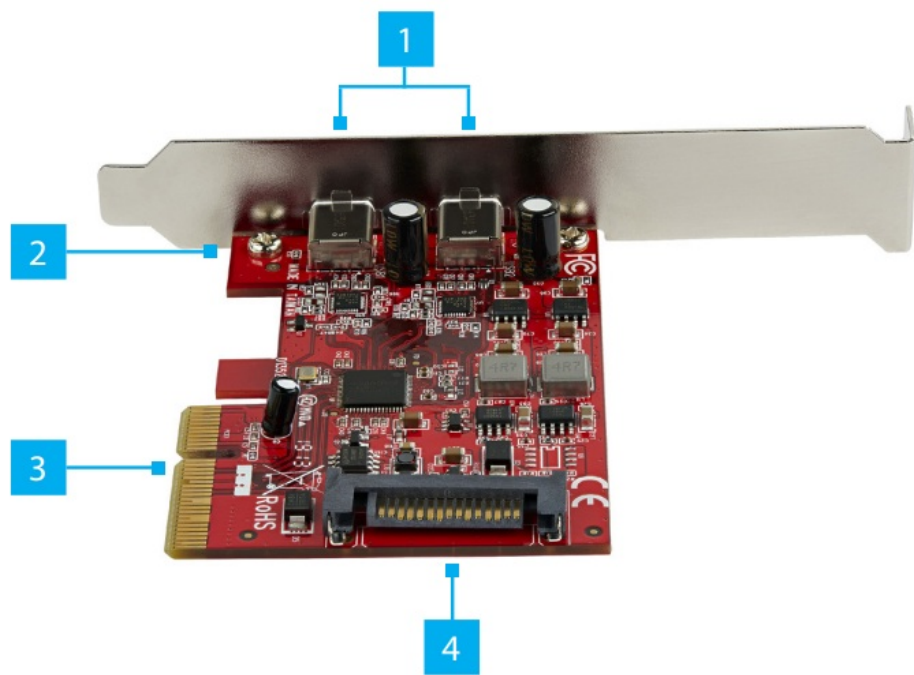
StarTech.com PEXUSB312C3 2-Port 10Gbps USB C PCIe Card Adapter



Product Information

The 2-Port USB 3.1 Card – 10Gbps per port – 2x USB-C – PCIe (Product Diagram: PEXUSB312C3) is a PCIe expansion card that provides two USB 3.1 Type-C ports with a data transfer rate of 10Gbps per port. It is compatible with Windows 7 and above and does not require driver installation on Windows 8 and higher. The card comes with a PCIe x4 connector for easy installation and a SATA power connector to provide extra power to the USB 3.1 Type-C ports for device charging. It also includes a slot bracket for both full-height and low-profile installations.

Product Diagram (PEXUSB312C3)



Port		Function
1	USB 3.1 Type-C Ports	<ul style="list-style-type: none">Connect two USB 3.1 Gen 2 Enabled Devices
2	Screws	<ul style="list-style-type: none">Secure the Low-Profile or Full-Height Bracket to the PCIe Card (PCIe)
3	PCIe x 4 Connector	<ul style="list-style-type: none">Connect the PCIe Card to the Computer Motherboard
4	SATA Power Connector	<ul style="list-style-type: none">(Optional) Connect a 15 Pin SATA Power Connector to provide extra power to the USB 3.1 Type-C Ports

Requirements

For the latest requirements please visit: www.startech.com/PEXUSB312C3.

- PCIe Slot
- Phillips Head Screwdriver
- (Optional) SATA Power Source

Installation

Hardware

WARNING: PCIe Cards can be severely damaged by static electricity. Make sure that you are properly grounded before you open the Computer Case or touch the PCIe Card. You should wear an Anti-Static Strap when you install any computer component. If an Anti-Static Strap isn't available, discharge any built-up static electricity by touching a large Grounded Metal Surface for several seconds. Only handle the PCIe Card by its edges and don't touch the gold connectors.

1. Ensure the Computer Power is Off.

2. Unplug the Computer Power Cord.
3. Remove the Computer Cover.

Note: For further information on how to remove the Computer Cover, refer to the Manual that came with the Computer.

4. Remove the Slot Bracket Holding Screw.
5. Remove the corresponding Full-Height or Low-Profile Slot Bracket from an available PCIe Slot.
 - Reconfigure the PCIe Card for Full-Height or Low-Profile installations.
 - **a.** Remove the two Screws using a Phillips Head Screwdriver.
 - **b.** Remove the Bracket.
 - **c.** Place the PCIe Card onto the new Bracket, aligning the holes in the Card and the Bracket.
 - **d.** Insert the two Screws through the PCIe Card and into Bracket.
 - **e.** Tighten using a Phillips Head Screwdriver.
6. To install the PCIe Card, carefully align the Card's PCIe x 4 Connector with the selected PCIe Slot on the Motherboard. Push the PCIe Card down firmly to ensure the PCIe Card is properly seated into the PCIe Slot.
7. (To provide extra power to the USB 3.1 Type-C Ports for Device charging) Connect a 15 Pin SATA Power Connector from the Power Supply to the SATA Power Connector on the PCIe Card.
8. Replace the Slot Bracket Holding Screw to secure the PCIe Card.
9. Replace the Computer Cover and reconnect the Power Cord.

Windows 8 and up has native support for this PCIe Card. No driver installation is needed unless the computer has Windows 7 installed.

Driver Installation Windows 7

1. Navigate to www.startech.com/PEXUSB312C3
2. Click the Drivers & Downloads tab.
3. Under Driver(s), download the Driver for your operating system.
4. Extract the contents of the Driver Package by Right-click the Driver Folder that was downloaded from the website and select Extract All. Follow the on-screen instructions to finish the Extraction.

Ensure to make a note of the location where the drivers were extracted. This location will be used on the next step.
5. Open the folder where the drivers were extracted. Right-click the setup.exe file and click Run as Administrator.

Verify Driver Installation (Windows 7)

1. Navigate to the Device Manager.
2. Under Universal Serial Bus controllers, Right-click ASMedia USB3.1 eXtensible Host Controller and click Properties.
3. Confirm that the driver is installed and working as expected. (Figure 1)

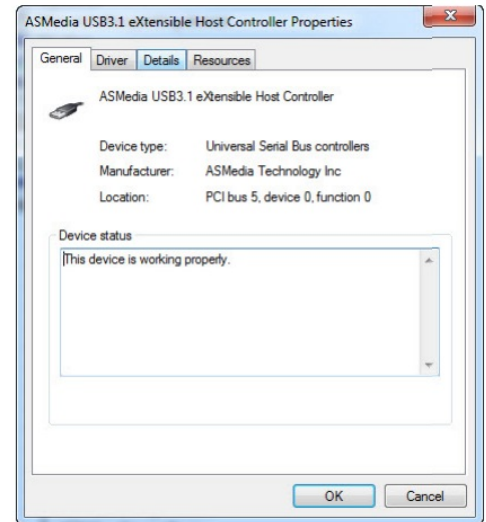
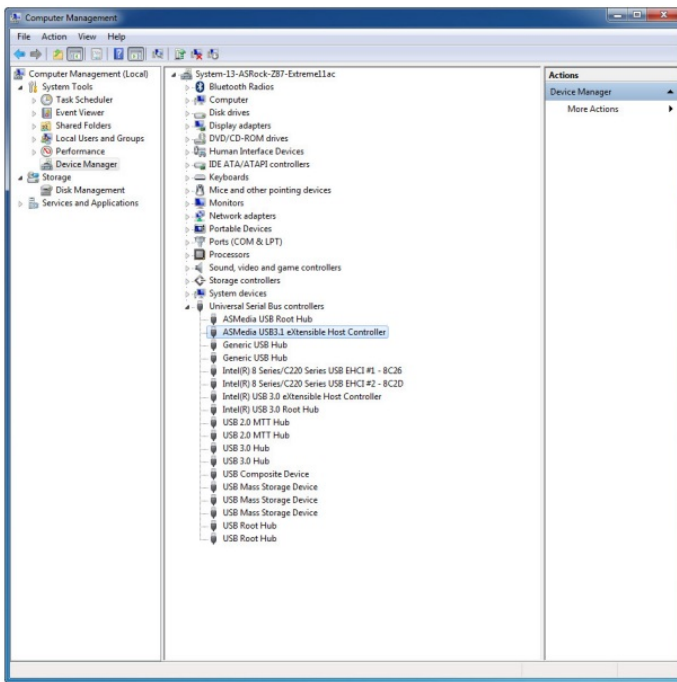


Figure 1

Verify Driver Installation (Windows 10)

1. Navigate to the Device Manager.
2. Under Universal Serial Bus controllers, Right-click ASMedia USB 3.1 eXtensible Host Controller and click Properties.
3. Confirm that the driver is installed and working as expected. (Figure 2)

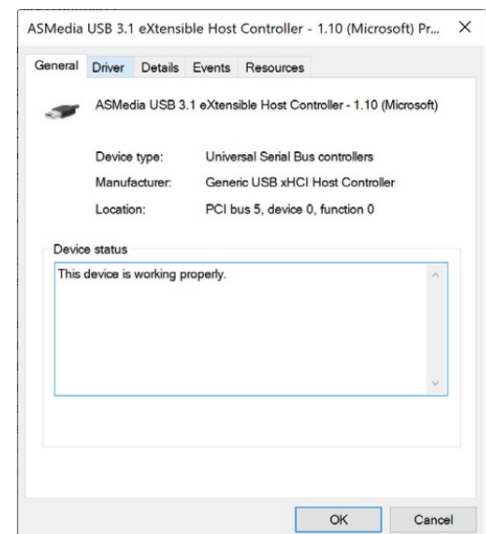
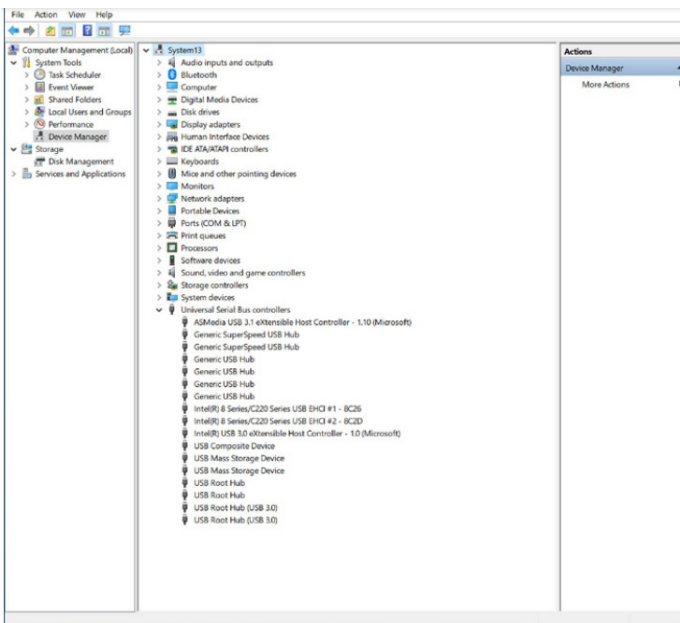


Figure 2

FCC Compliance Statement

This equipment has been tested and found to comply with the limits for a Class B digital device, pursuant to part 15 of the FCC Rules. These limits are designed to provide reasonable protection against harmful interference in a residential installation. This equipment generates, uses and can radiate radio frequency energy and, if not installed and used in accordance with the instructions, may cause harmful interference to radio communications. However, there is no guarantee that interference will not occur in a particular installation. If this equipment does cause harmful interference to radio or television reception, which can be determined by turning the equipment off and on, the user is encouraged to try to correct the interference by one or more of the following measures:

- Connect the equipment into an outlet on a circuit different from that to which the receiver is connected.
- Consult the dealer or an experienced radio/TV technician for help

1. This device complies with part 15 of the FCC Rules. Operation is subject to the following two conditions:
2. This device may not cause harmful interference,

This device must accept any interference received, including interference that may cause undesired operation. Changes or modifications not expressly approved by StarTech.com could void the user's authority to operate the equipment.

Industry Canada Statement

This Class B digital apparatus complies with Canadian ICES-003.

Cet appareil numérique de la classe [B] est conforme à la norme NMB-003 du Canada.

CAN ICES-3 (B)/NMB-3(B)

This device complies with Industry Canada licence-exempt RSS standard(s). Operation is subject to the following two conditions:

1. This device may not cause interference,
2. This device must accept any interference, including interference that may cause undesired operation of the device.

Use of Trademarks, Registered Trademarks, and other Protected Names and Symbols

This manual may make reference to trademarks, registered trademarks, and other protected names and/or symbols of thirdparty companies not related in any way to StarTech.com. Where they occur these references are for illustrative purposes only and do not represent an endorsement of a product or service by StarTech.com, or an endorsement of the product(s) to which this manual applies by the third-party company in question. StarTech.com hereby acknowledges that all trademarks, registered trademarks, service marks, and other protected names and/or symbols contained in this manual and related documents are the property of their respective holders. PHILLIPS® is a registered trademark of Phillips Screw Company in the United States or other countries.

Warranty Information

This product is backed by a two-year warranty.

For further information on product warranty terms and conditions, please refer to www.startech.com/warranty.

Limitation of Liability

In no event shall the liability of StarTech.com Ltd. and StarTech.com USA LLP (or their officers, directors, employees or agents) for any damages (whether direct or indirect, special, punitive, incidental, consequential, or otherwise), loss of profits, loss of business, or any pecuniary loss, arising out of or related to the use of the product exceed the actual price paid for the product.

Some states do not allow the exclusion or limitation of incidental or consequential damages. If such laws apply, the limitations or exclusions contained in this statement may not apply to you.

Safety Measures

- If product has an exposed circuit board, do not touch the product under power.

CONTACT

- **StarTech.com Ltd.**

Address: 45 Artisans Crescent London, Ontario N5V 5E9 Canada

- **StarTech.com LLP**

Address: 4490 South Hamilton Road Groveport, Ohio 43125 U.S.A.

- **StarTech.com Ltd.**


Address: Unit B, Pinnacle 15 Gowerton Road Brackmills, Northampton NN4 7BW United Kingdom

- **StarTech.com Ltd.**

Address: Siriusdreef 17-27 2132 WT Hoofddorp The Netherlands

[StarTech.com](https://www.startech.com)

Documents / Resources

	StarTech.com PEXUSB312C3 2-Port 10Gbps USB C PCIe Card Adapter [pdf] User Guide PEXUSB312C3 2-Port 10Gbps USB C PCIe Card Adapter, PEXUSB312C3, 2-Port 10Gbps USB C PCIe Card Adapter, 10Gbps USB C PCIe Card Adapter, USB C PCIe Card Adapter, PCIe Card Adapter, Card Adapter, Adapter
---	---

References

- [StarTech.com | IT Pro's Trusted Source for Connectivity Accessories](#)
- [2x 10Gbps USB C PCIe Card -USB 3.1 Gen 2 - USB 3.0 Cards | StarTech.com](#)
- [StarTech.com Support](#)
- [StarTech.com Warranty Policy](#)

[Manuals+](#)