



StarTech com KBTRAYADJ2 Adjustable Keyboard Tray with Mouse Pad User Manual

[Home](#) » [StarTech.com](#) » StarTech com KBTRAYADJ2 Adjustable Keyboard Tray with Mouse Pad User Manual 

Contents

- 1 [StarTech com KBTRAYADJ2 Adjustable Keyboard Tray with Mouse Pad](#)
- 2 [Compliance Statements](#)
- 3 [Safety Statements](#)
- 4 [Warning Statements](#)
- 5 [Product Diagram](#)
- 6 [Product Dimensions](#)
- 7 [Product Information](#)
 - 7.1 [Package Contents](#)
- 8 [Installation](#)
- 9 [Operation](#)
- 10 [Documents / Resources](#)
 - 10.1 [References](#)
- 11 [Related Posts](#)

StarTech.com

StarTech.com KBTRAYADJ2 Adjustable Keyboard Tray with Mouse Pad



Compliance Statements

Use of Trademarks, Registered Trademarks, and other Protected Names and Symbols

This manual may make reference to trademarks, registered trademarks, and other protected names and/or symbols of third-party companies not related in any way to StarTech.com. Where they occur these references are for illustrative purposes only and do not represent an endorsement of a product or service by StarTech.com, or an endorsement of the product(s) to which this manual applies by the third-party company in question. Regardless of any direct acknowledgment elsewhere in the body of this document, StarTech.com hereby acknowledges that all trademarks, registered trademarks, service marks, and other protected names and/or symbols contained in this manual and related documents are the property of their respective holders.

PHILLIPS® is a registered trademark of Phillips Screw Company in the United States or other countries.

Safety Statements

Safety Measures

- Product installation and/or mounting should be completed by a certified professional as per the local safety and building code guidelines.

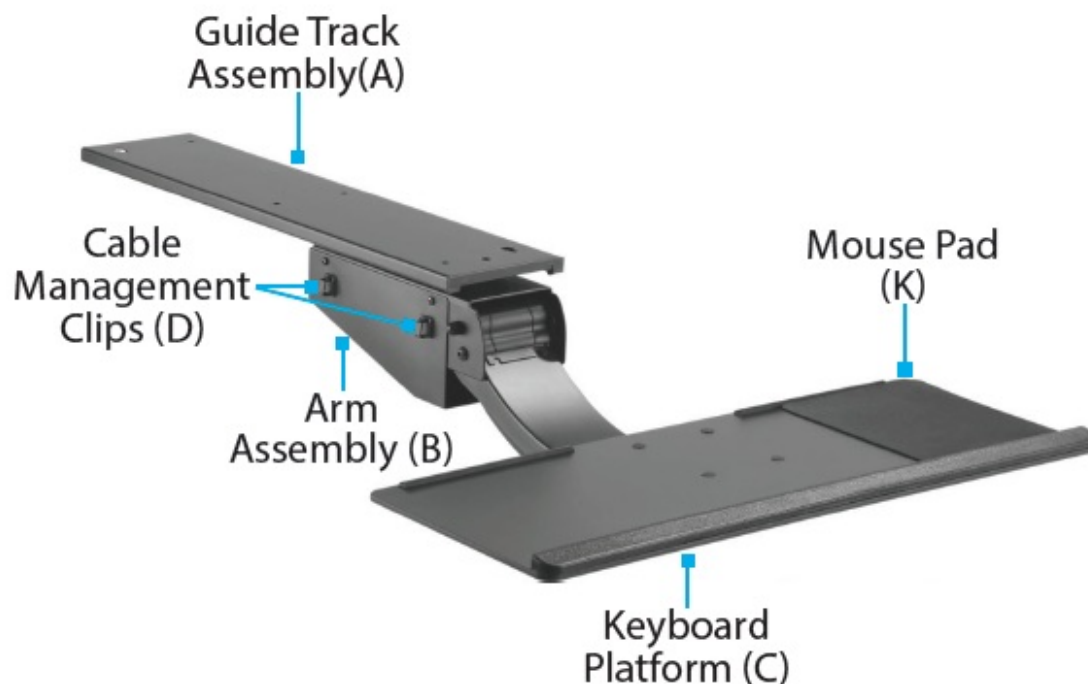
Warning Statements

- Assemble this product according to the instructions.
- Read the entire manual and ensure the instructions are fully understood before assembling and/or using this product.
- Do not exceed the weight capacity of this product. Overloading this product might result in injury or property damage.
- Weight capacity of the keyboard tray: 2 kg (4.4 lb.)

- Do not allow children to climb on this product, or use this product without proper supervision.
- This product is intended for indoor use only and should not be used outdoors.
- Do not over-tighten the screws. If any resistance is encountered, stop tightening.
- Assembling this product is a two-person task. Do not attempt to assemble this product and install equipment without assistance.
- Before adding equipment to this product, ensure the product has been properly assembled, and that the product can support the weight of the added equipment.
- Make sure all of the equipment has been properly secured before adjusting this product.
 - **Stored Energy Hazard!** This product contains a spring mechanism that can cause the assembly and/or mounted equipment to move forcibly, and quickly when released via the actuating lever or handle. Read and follow the operating instructions and heed any precautions provided. Before operating the lever or handle, understand the motion created by the spring mechanism and always exercise caution. Failure to do so may result in property damage and/or serious personal injury.
- **Pinch hazard!** Keep your fingers clear from moving components.

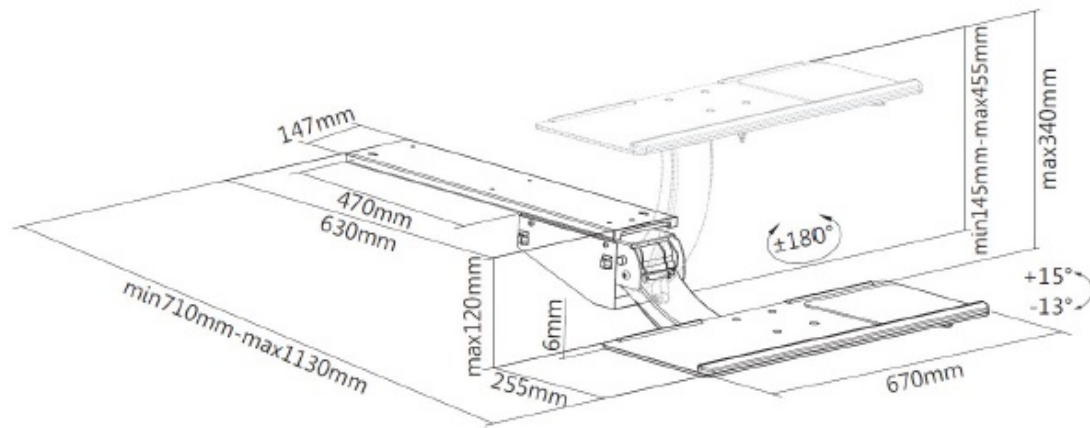
Product Diagram

Front View

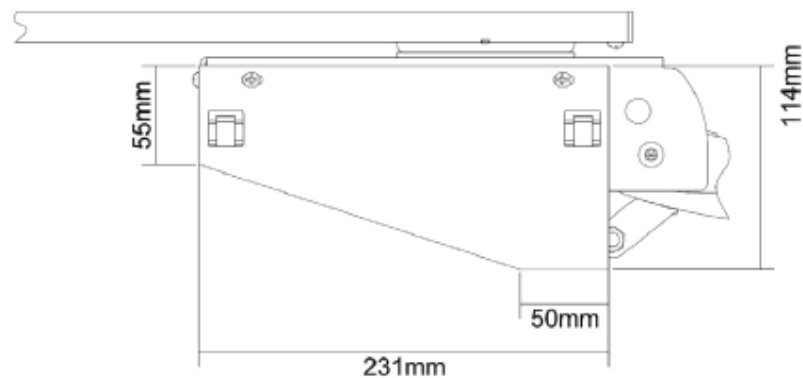


Product Dimensions

Front View



Side View



Product Information

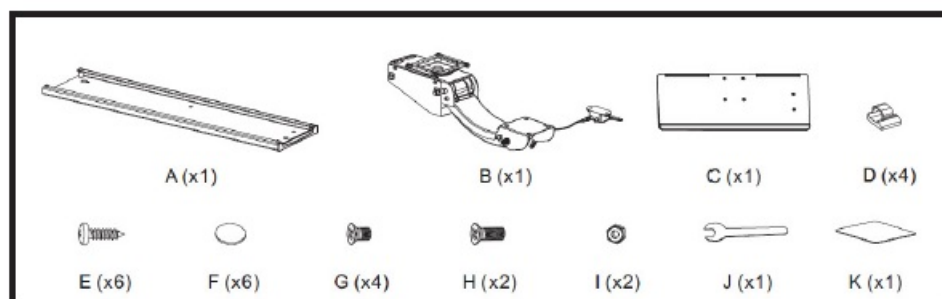
Requirements

For the latest product information, technical specifications, manuals, and Declarations of Conformance, please visit: www.startech.com/KBTRAYADJ2

- Phillips Head Screwdriver

Package Contents

Note: The following images are not to scale.



Package contents not pictured above:

- Self-Adhesive Foam Pad x 1
- Mounting Template x 1
- User Manual x 1

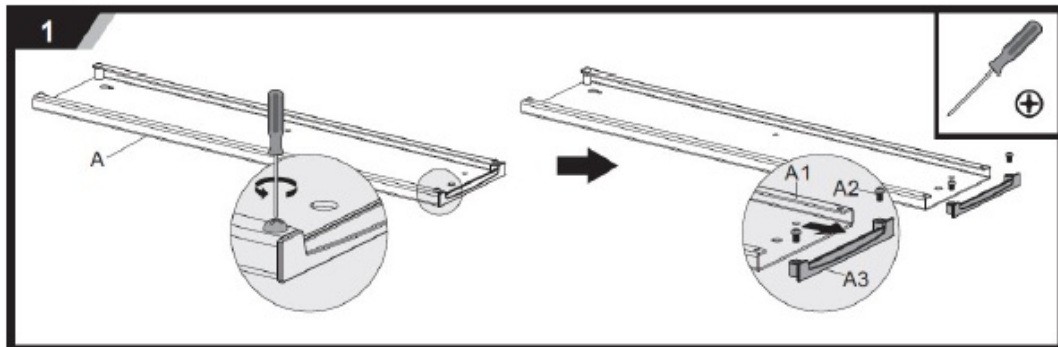
Installation

Stored Energy Hazard! This product contains a spring mechanism that can cause the assembly and/or mounted equipment to move forcibly, and quickly when released via the actuating lever or handle. Read and follow the operating instructions and heed any precautions provided. Before operating the lever or handle, understand the motion created by the spring mechanism and always exercise caution. Failure to do so may result in property damage and/or serious personal injury.

Warning! Do not actuate the height adjustment lever/ handle until the installation steps have been completed.

Caution! Do not overtighten any of the screws. Pinch hazards! Keep hands away from any pinch points created by the mechanical components when moving the keyboard tray. Failure to do so may result in serious personal injury.

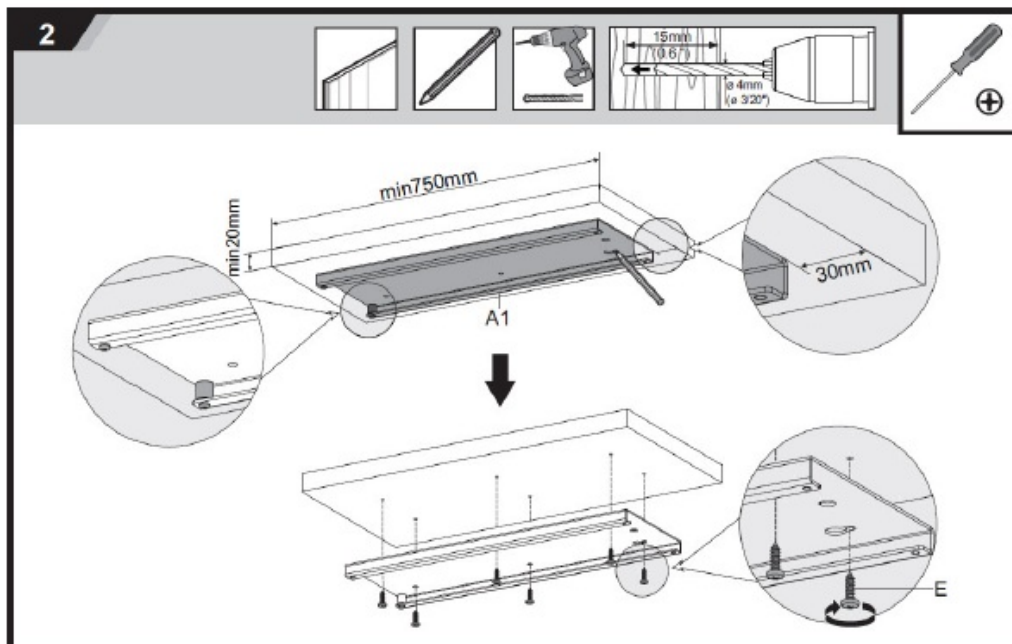
Remove the Screws (A2) and Guide Track Bumper (A3) from the Guide Track (A1)



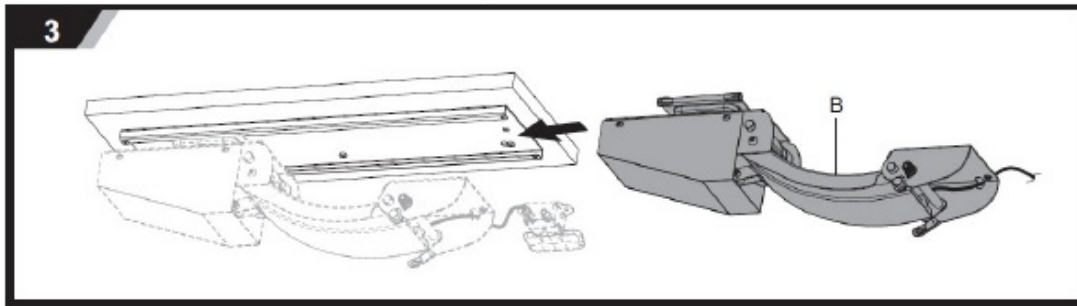
Attach the Guide Track (A1) to the Mounting Surface

Warning! Before attempting this installation step, determine the suitability of the mounting screws and pilot hole preparation method for the mounting surface.

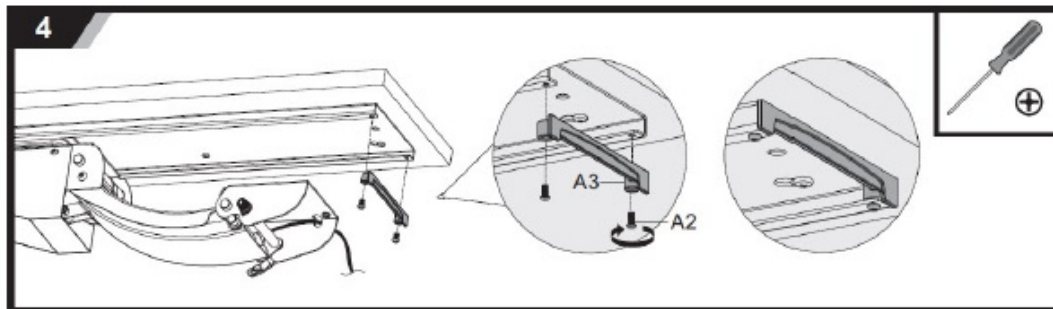
Notes: Use the Mounting Template (included) to determine the most suitable location for the mounting holes. Ensure the Guide Track (A1) is mounted no more than 30 mm back from the edge of the mounting surface.



Slide the Arm Assembly (B) into the Guide Track (A1)

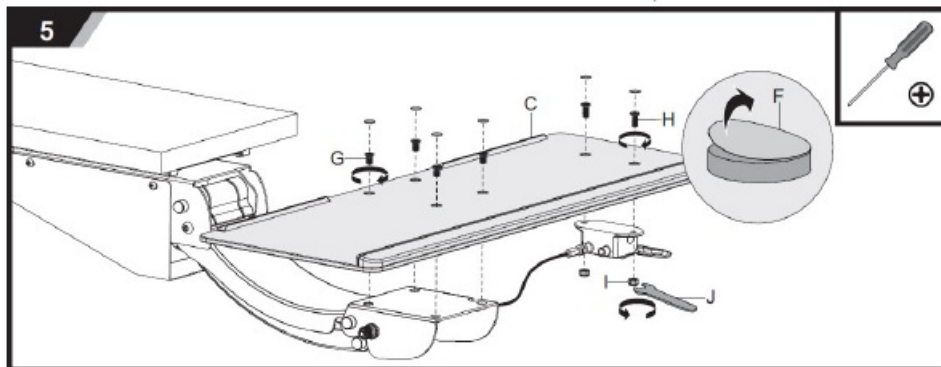


Attach the Screws (A2) and Guide Track Bumper (A3) to the Guide Track (A1)



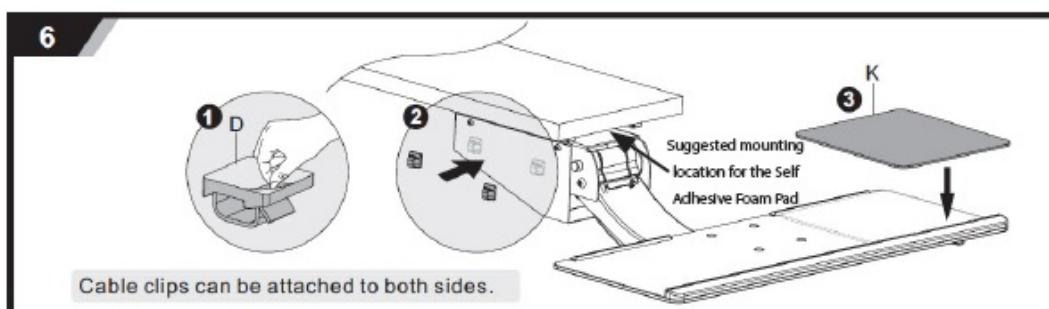
Attach the Keyboard Platform (C) to the Arm Assembly (B) and Attach the Paddle to the Keyboard Platform (C)

- After installing all the screws, peel and stick one Screw Cover (F) over each exposed Keyboard Platform Mounting Screw (G) and Paddle Mounting Screw (H) in the Keyboard Platform (C).



Attach the Cable Management Clips (D) and Mouse Pad (K) to the Arm Assembly (B)

- Apply the Self Adhesive Foam Pad to the underside of the mounting surface in the location the Arm Assembly (B) makes contact with the mounting surface.

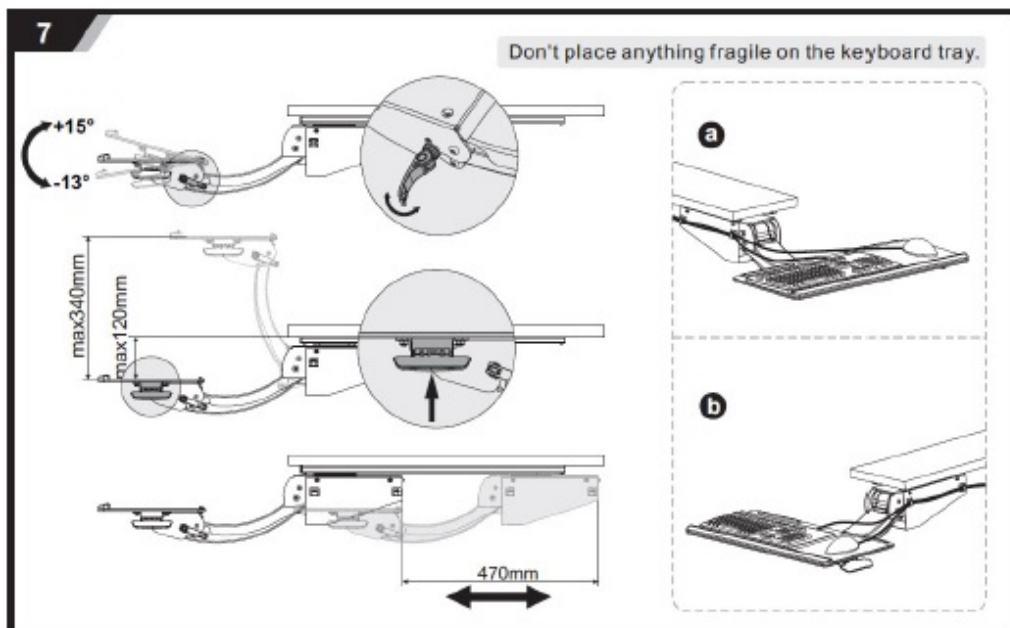


Operation

Adjust the Tilt and Height of the Keyboard Platform Assembly (C)(K)

Stored Energy Hazard! This product contains a spring mechanism that can cause the assembly and/or mounted equipment to move forcibly, and quickly when released via the actuating lever or handle. Read and follow the operating instructions and heed any precautions provided. Before operating the lever or handle, understand the motion created by the spring mechanism and always exercise caution. Failure to do so may result in property damage and/or serious personal injury.

Caution! The Keyboard Platform Assembly (C)(K) must be raised in order to complete this operation step. To prevent the Keyboard Platform Assembly (C)(K) from rising too quickly, the ascent can be controlled manually. To perform this safely, the palm of the hand must be placed on the surface of the Keyboard Platform Assembly (C)(K). A consistent manual force is required to control the Keyboard Platform Assembly's (C)(K) upward swing. The installer's hand must be kept away from any pinch points created by the moving component. The installer's body and/or property must be kept away from the swing path of the Keyboard Platform Assembly (C)(K).



Warranty Information

This product is backed by a two-year warranty.

For further information on product warranty terms and conditions, please refer to www.startech.com/warranty.

Limitation of Liability

In no event shall the liability of StarTech.com Ltd. and StarTech.com USA LLP (or their officers, directors, employees, or agents) for any damages (whether direct or indirect, special, punitive, incidental, consequential, or otherwise), loss of profits, loss of business, or any pecuniary loss, arising out of or related to the use of the product exceed the actual price paid for the product.

Some states do not allow the exclusion or limitation of incidental or consequential damages. If such laws apply, the limitations or exclusions contained in this statement may not apply to you.

Hard-to-find made easy. At StarTech.com, that isn't a slogan. It's a promise.

StarTech.com is your one-stop source for every connectivity part you need. From the latest technology to legacy products — and all the parts that bridge the old and new — we can help you find the parts that connect your solutions.

We make it easy to locate the parts, and we quickly deliver them wherever they need to go. Just talk to one of our tech advisors or visit our website. You'll be connected to the products you need in no time.

Visit www.startech.com for complete information on all StarTech.com products and to access exclusive resources and time-saving tools.

StarTech.com is an ISO 9001 Registered manufacturer of connectivity and technology parts. StarTech.com was founded in 1985 and has operations in the United States, Canada, the United Kingdom, and Taiwan servicing a worldwide market.

Reviews

Share your experiences using StarTech.com products, including product applications and setup, what you love about the products, and areas for improvement.

StarTech.com Ltd.

45 Artisans Crescent
London, Ontario
N5V 5E9
Canada

StarTech.com LLP

4490 South
Hamilton Road
Groveport, Ohio
43125
U.S.A.

StarTech.com Ltd.


Unit B, Pinnacle 15
Gowerton Road
Brackmills,
Northampton
NN4 7BW
United Kingdom

StarTech.com Ltd.

Siriusdreef 17-27
2132 WT
Hoofddorp
The Netherlands

- FR: fr.startech.com
- DE: de.startech.com
- ES: es.startech.com
- NL: nl.startech.com
- IT: it.startech.com
- JP: jp.startech.com

Documents / Resources

	StarTech.com KBTRAYADJ2 Adjustable Keyboard Tray with Mouse Pad [pdf] User Manual KBTRAYADJ2, Adjustable Keyboard Tray with Mouse Pad, Keyboard Tray, Keyboard Tray with Mouse Pad
---	---

References

- [Unsere Produkte dienen IT- und A/V-Profis zum Verbinden, Konvertieren, Erweitern, Splitten und Switchen | Deutschland](#)
- [StarTech.com conçoit et fabrique une vaste sélection de pièces d'ordinateur, de câbles, de commutateur KVM, de racks... | France](#)
- [Pezzi per computer, cavi, switch KVM, server rack e soluzioni per reti | Italia](#)
- [IT & A / V](#)
- [StarTech.com ontwerpt en produceert een enorme selectie computeronderdelen, kabels, KVM-switches, serverracks en... | Nederland](#)
- [StarTech.com | IT Pro's Trusted Source for Connectivity Accessories](#)
- [StarTech.com | IT Pro's Trusted Source for Connectivity Accessories](#)
- [Under Desk Keyboard Tray - Adjustable - Sit-Stand Workstations | Display Mounting and Mobility](#)
- [StarTech.com Support](#)

-  [StarTech.com Warranty Policy](#)

Manuals+.