



StarTech com BEZ4MOD Single-Module Conference Table Box User Manual

[Home](#) » [StarTech.com](#) » StarTech com BEZ4MOD Single-Module Conference Table Box User Manual



Single-Module Conference Table Box



User Manual
SKU#: BEZ4MOD

Contents [[hide](#)]

- [1 Compliance Statements](#)
- [2 Safety Statements](#)
- [3 Product Diagram](#)
- [4 Product Information](#)
- [5 Requirements](#)
- [6 Installation](#)
- [7 Assembling the Cable Management Module](#)
- [8 Technical Support](#)
- [9 Documents / Resources](#)
 - [9.1 References](#)
- [10 Related Posts](#)

Compliance Statements

Use of Trademarks, Registered Trademarks, and other Protected Names and Symbols

This manual may make reference to trademarks, registered trademarks, and other protected names and/or symbols of third-party companies not related in any way to [StarTech.com](https://www.StarTech.com). Where they occur these references are for illustrative purposes only and do not represent an endorsement of a product or service by [StarTech.com](https://www.StarTech.com), or an endorsement of the product(s) to which this manual applies by the third-party company in question.

Regardless of any direct acknowledgement elsewhere in the body of this document, [StarTech.com](https://www.startech.com) hereby acknowledges that all trademarks, registered trademarks, service marks, and other protected names and/or symbols contained in this manual and related documents are the property of their respective holders.

Safety Statements

Safety Measures

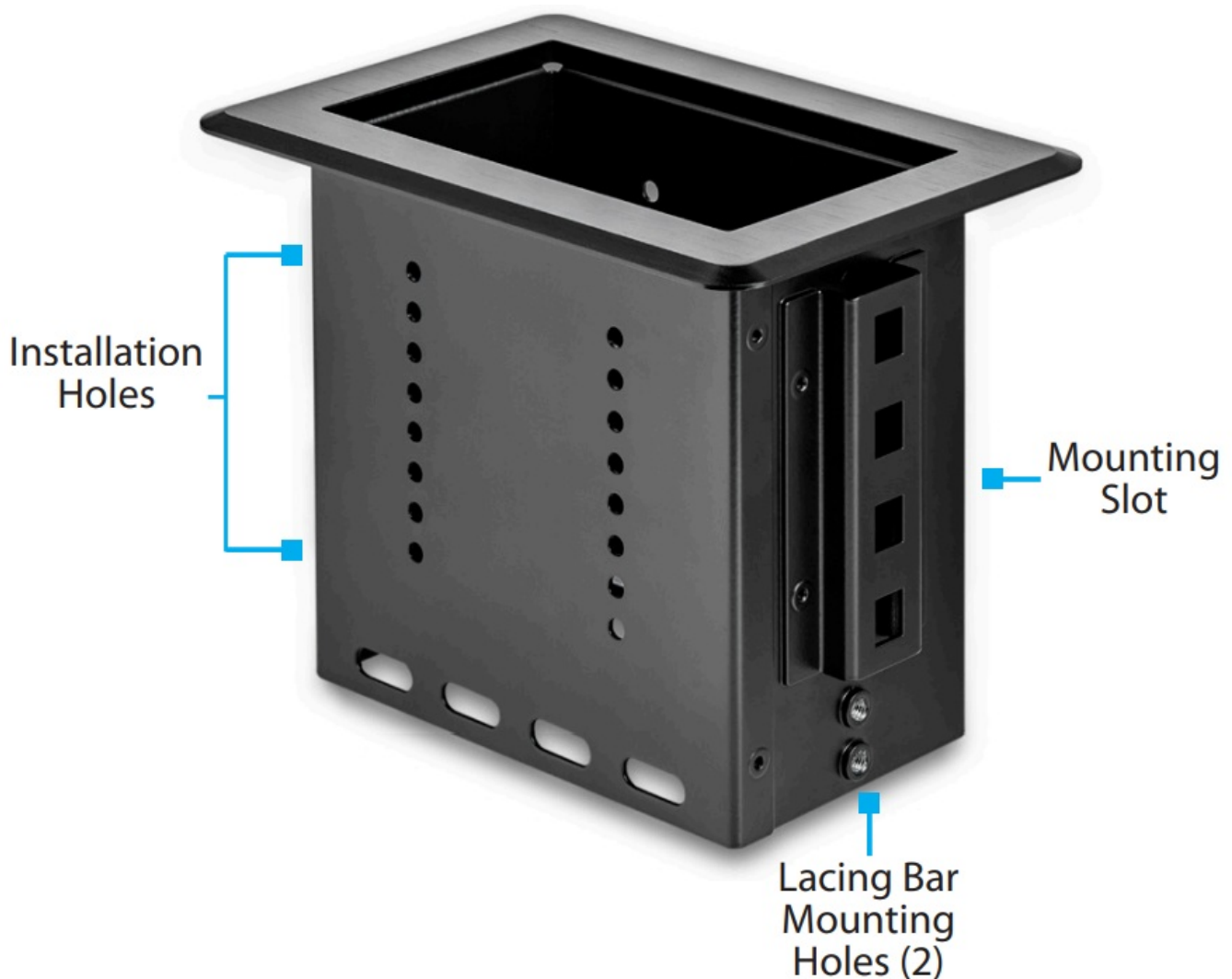
- Wiring terminations should not be made with the product and/or electric lines under power.
- Product installation and/or mounting should be completed by a certified professional as per the local safety and building code guidelines.
- Cables (including power and charging cables) should be placed and routed to avoid creating electric, tripping or safety hazards.

Warning Statements

Make sure to assemble this product according to the instructions. Failure to do so might result in personal injury or property damage.

Never use this product if parts are missing or damaged.

Product Diagram



Product Information

Package Contents

BOX4MODULE

- Modular Table Box x 1
- Installation Kit
- Wing Fastener x 2
- Die Cut Outline x 1
- Lacing Bar x 1
- Lacing Bar Screws (M4 x 4 mm) x 4
- Cable Management Module
- Cable Management Bracket x 1
- Cable Management Top Plates x 2
- Cable Management Plate Screws (#6-32 x 3/8") x 4
- Cable Management Bracket Mounting Screws (#6-32 x 3/8") x 4
- Small Cable Bushing x 1
- Large Cable Bushing x 1
- User Manual x 1

Requirements

Installation:

Installation requirements are sold separately.

- Surface for Installation
- Cable Ties
- Tools
- 3/8 Wood Drill Bit x 1
- Phillips Head Screwdriver x 1
- Jigsaw x 1
- Drill x 1
- Writing Utensil x 1
- Painter's Tape x 1

Module:

Module requirements are optional and will depend on the configuration needed for the Conference Table setup. Modules to choose from include:

- Docking Station Module (MOD4DOCKACPD)
- Cable Management Module (MODIFIABLE)
Note: Half size module included, additional cable management brackets sold separately.
- Power Module (MOD4POWERNA, MOD4POWEREU, or MOD4POWERUK)
- A/V Connectivity Module (MOD4AVHD)
- A/V Module with HDMI over CAT5e/CAT6 (MOD4AVHDBT)

Installation

For additional information on installing the Modular Table Box, please visit www.startech.com/BEZ4MOD to watch the installation video.

Notes: [StarTech.com](http://www.startech.com) is not responsible for any damages related to the installation of this product.

Prior to installation, please test the product's port compatibility with all devices and displays intended for use with this product.

The thickness of the table surfaced used for installation should not exceed 2.25 inches.

Cutting the Table/Surface

Note: Check the underside of the table/surface you are installing the Modular Table Box into to ensure that there are no obstructions that may interfere with the installation.

1. Carefully cut along the dotted guideline on the Die Cut Outline, cutting off the four edges of the Die Cut Outline, leaving the inner Surface Cut-Out Area intact.

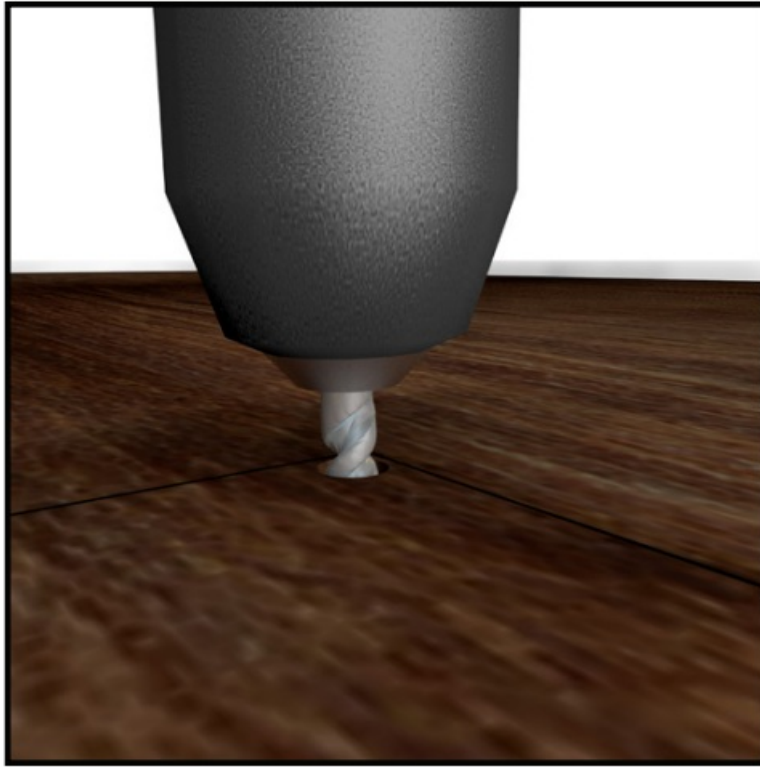
Note: The Die Cut Outline has been created with a built in margin of error of 1/16" (1.5 mm) in either direction of the marked cut line, to compensate for any deviation while cutting out the Surface Cut-Out Area.

2. Before cutting the surface of the table, measure and align the Surface CutOut Area (created in step 1) into the desired position on the table's surface. Tape the Surface Cut-Out Area in place using Painter's Tape.
3. Using a Writing Utensil, trace around the Surface Cut-Out Area to create a guide on the table's surface.



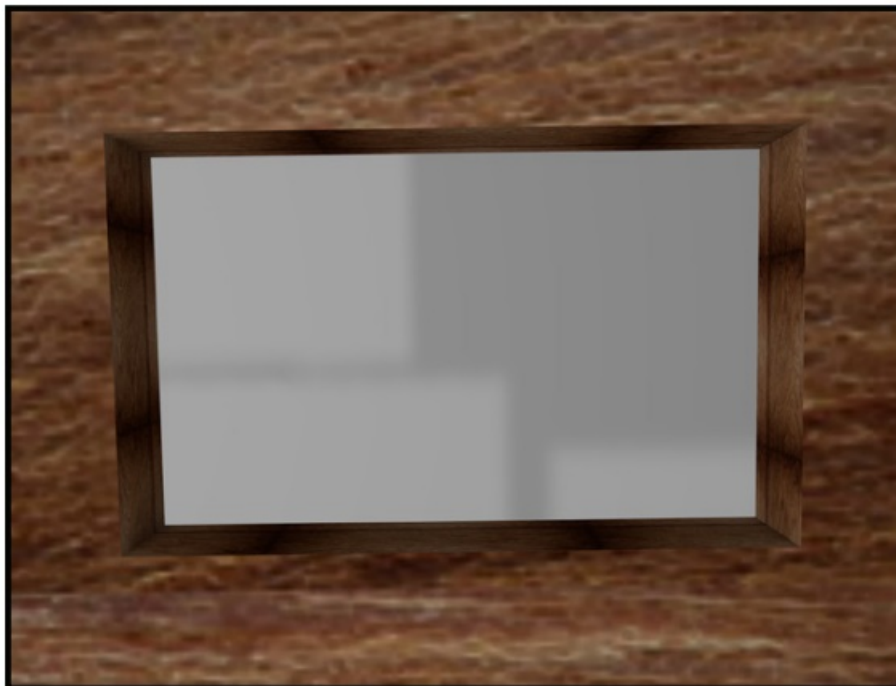
Surface Cut-Out Area

4. Carefully remove the Surface Cut-Out Area from the table's surface.
5. Using a Drill with a 3/8" Wood Drill Bit, carefully drill pilot holes in each of the four corners of the guide.



Drill Pilot Holes

6. Insert the Jigsaw Blade into one of the pilot holes and carefully cut into the surface, along the guide lines to connect the four pilot holes, cutting the installation hole out of the table's surface.



Installation Hole

Installing the Module in the Modular Table Box

Notes: Modules can be mounted using three different mounting depths depending on your conference table setup.

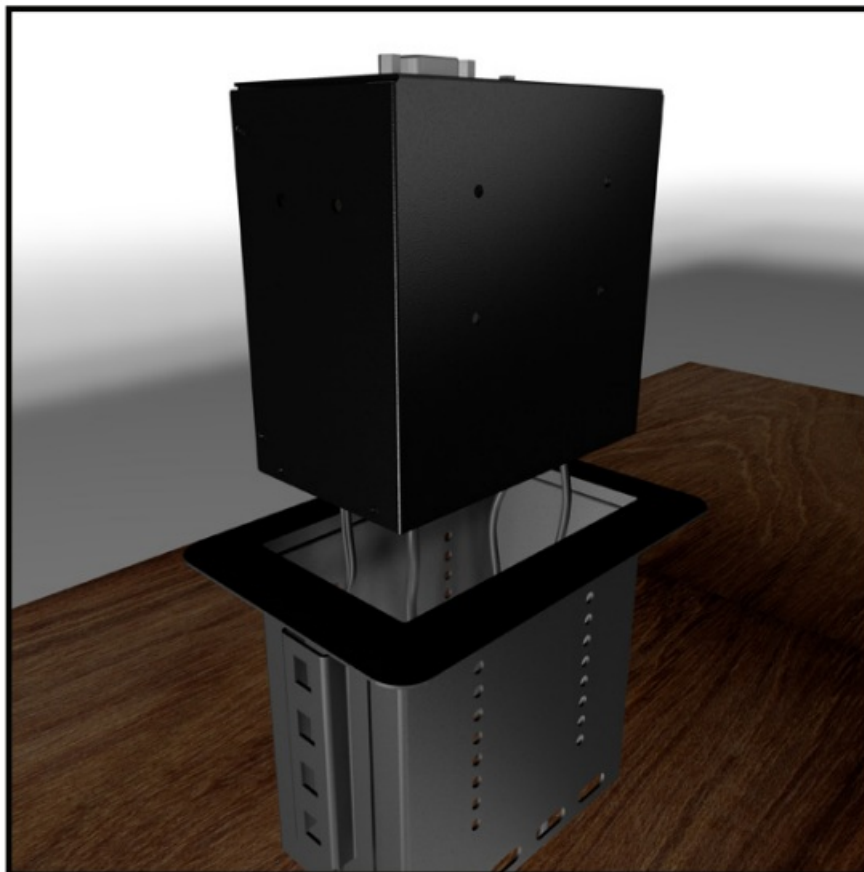
See Assembling the Cable Module and Installing the Cable Module if you intend to use the Cable Module in your Modular Table Box configuration.

1. Determine the mounting depth of the Module inside the Modular Table Box. Take into consideration cable bend radius and the amount of clearance needed to properly close the Modular Table Box lid while cables are connected to the Module.

Notes: Before installing a Module into the Modular Table Box, connect each of the conference room devices to the bottom of the Module (see Connecting Devices to the Bottom of the Module or Connecting Devices to the Top of the Module sections in the Module's User Manual).

Connect the Universal Power Adapter to the bottom of the Module (see Powering the Module section in the Module's User Manual).

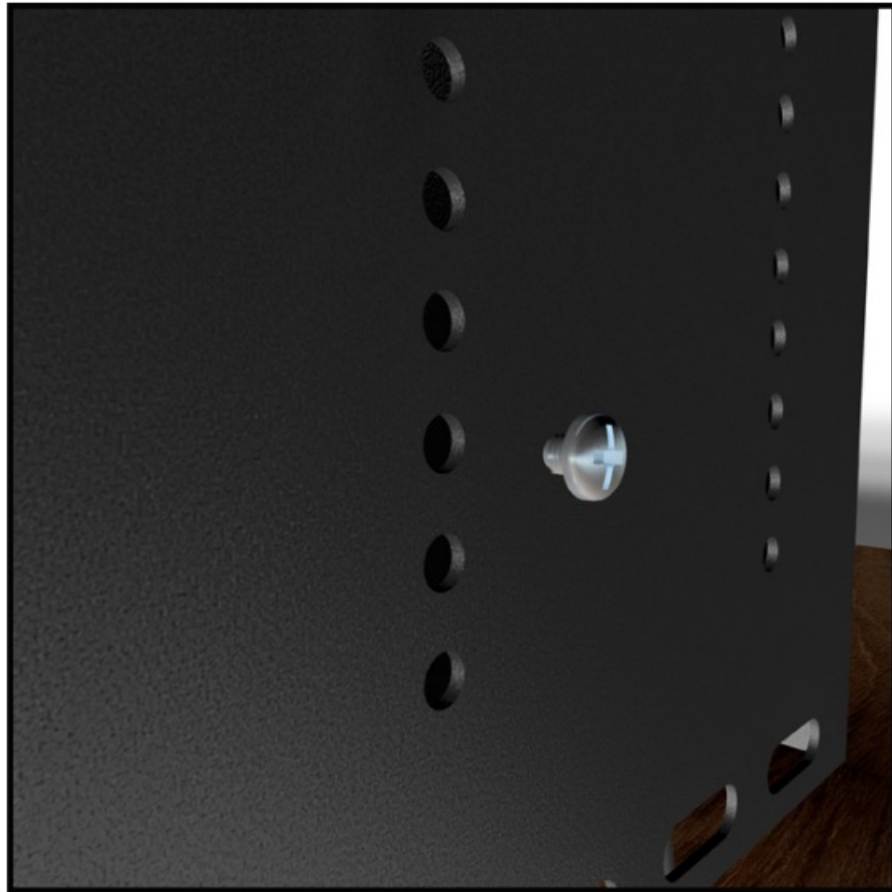
2. When connecting conference room devices and power to the Module, feed the cables through the Modular Table Box from the bottom up and connect the required cables to the corresponding ports on the Module.
3. Insert the Module into the Modular Table Box.



Insert Module into Modular Table Box

4. Align the Module with the Installation Holes on both sides of the Modular Table Box.
5. Insert the Module Screws (x 8, 4 per side) through the Installation Holes on the Modular Table Box and into the Mounting Holes on the Module.

Note: The eight Module Screws are packaged with the Module.



Inserting Module Screws

6. Using a Phillips Head Screwdriver, tighten the Module Screws. Be careful not to overtighten.

Installing the Lacing Bar (Cable Organization)

1. On the Modular Table Box or Single Modular Table Box, align the Mounting Holes on the Lacing Bar with the Mounting Holes on the Modular Table Box.
2. Insert the Lacing Bar Screws (2 per side) through the Mounting Holes on the Lacing Bar and into the Modular Table Box.

Note: The Modular Table Box has three Lacing Bar mounting options (left, center, and right). Mount the Lacing Bar in the position that best suits your needs.



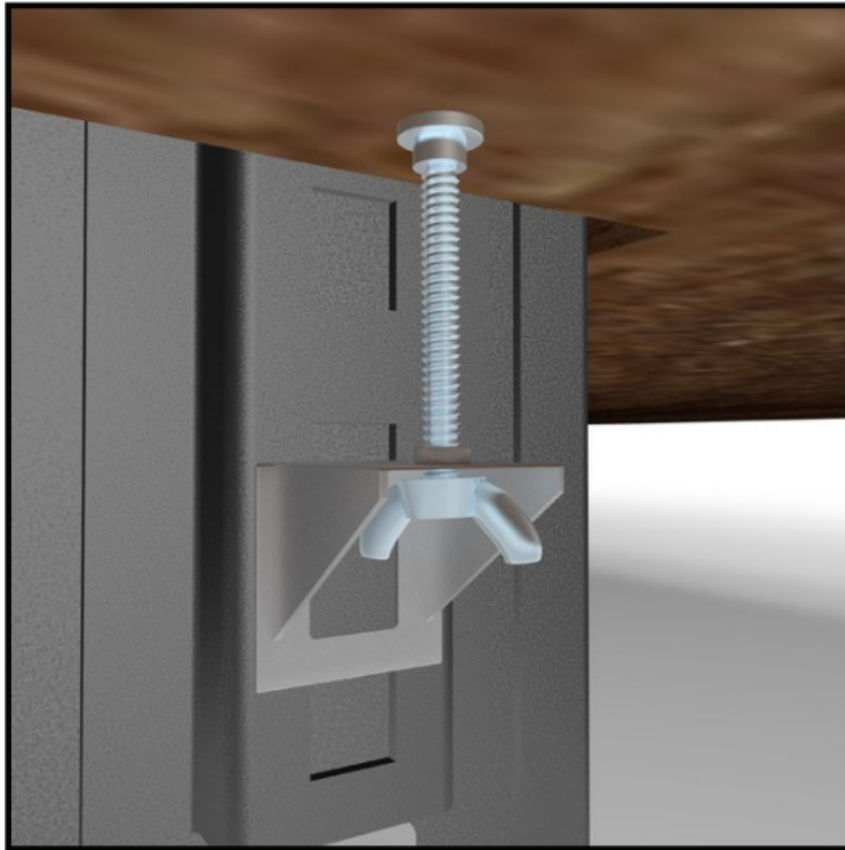
Installing the Lacing Bar

3. Using a Phillips Head Screwdriver, tighten the Lacing Bar Screws. Be careful not to overtighten.
4. Using Cable Ties (sold separately), attach the cables connected to the Module(s) to the Lacing Bar.

Note: The Lacing Bar is used for cable management and can help reduce cable strain, bend radius, unintentional cable disconnects and improve organization.

Installing the Modular Table Box into a Surface

1. Place the Modular Table Box (sold separately or included in a bundle) into the hole in the table's surface.
2. Under the table's surface, slide the Wing Fasteners (1 per side) into a Mounting Slot on the Mounting Bracket.
The Mounting Slot you use will be determined by the height of the table's surface.



Installing the Wing Fasteners

3. Secure the Modular Table Box in place by tightening each of the Wing Fasteners until the top of the nut comes in contact with the bottom of the table's surface, creating a tight seal between the table's surface and the Modular Table Box. Be careful not to overtighten the Wing Fasteners.



Modular Table Box

Assembling the Cable Management Module

The Cable Management Module is used to organize up to 2 cables in the Modular Table Box.

Assembly Requirements:

- Modular Table Box (SKU: BEZ4MOD or BOX4MODULE) x 1
 - Cable Management Module x 1
 - Cable Management Bracket x 1
 - Small Cable Bushing x 1
 - Large Cable Bushing x 1
 - Cable Management Plate x 2
 - Plate Screws (#6-32 x 3/8) x 4
 - Bracket Screws (#6-32 x 3/8) x 4
 - Tools
 - Phillips Head Screwdriver x 1
1. Align one of the Cable Management Plates with the Plate Screw Holes and Bushing Holes on the top of the Cable Management Bracket. Insert 2 of the Plate Screws through the Cable Management Plate and into the Cable Management Bracket.
 2. Using the Phillips Head Screwdriver tighten the 2 Plate Screws, securing the Cable Management Plate in place. Be careful not to over tighten the Plate Screws.
 3. Insert one cable (max 7.9 mm diameter) through the slit in the Small Cable Bushing. Using just enough force to get the cable through the slit without damaging the bushing.
 4. Insert one cable (max 14.5 mm diameter) through the slit in the Large Cable Bushing. Using just enough force to get the cable through the slit without damaging the bushing.
 5. Feed the cables through the bottom of the Cable Management Bracket.
 6. Align the other Cable Management Plate with the Plate Screw Holes and Bushing Holes on the top of the Cable Management Bracket. Insert 2 of the Plate Screws, through the Cable Management Plate and into the Cable Management Bracket.
 7. Using the Phillips Head Screwdriver tighten the 2 Plate Screws, securing the Cable Management Plate in place. Be careful not to over tighten the Plate Screws.
 8. Carefully push the Cable Bushings into the designated Bushing Holes, snapping them into place.

Installing the Cable Management Module

If you intend to use the Cable Management Module in your Modular Table Box configuration you will need to install it at the same time you are installing the other Modules.

1. Determine the mounting depth of the Module inside the Modular Table Box. Consider the cable bend radius and the amount of clearance needed to properly close the Modular Table Box lid while cables are connected to the Module.
2. Insert the Module into the Modular Table Box.
3. Align the Module with the Installation Holes on both sides on the Modular Table Box.
4. Insert the Module Screws (x 4, 2 per side) through the Installation Holes on the Modular Table Box and into the Mounting Holes on the Module.
5. Using a Phillips Head Screwdriver, tighten the Module Screws, be careful not to overtighten.

Technical Support

StarTech.com's lifetime technical support is an integral part of our commitment to provide industry-leading solutions. If you ever need help with your product, visit www.startech.com/support and access our comprehensive selection of online tools, documentation, and downloads.

For the latest drivers/software, please visit www.startech.com/downloads

Warranty Information

This product is backed by a two-year warranty.

StarTech.com warrants its products against defects in materials and workmanship for the periods noted, following the initial date of purchase.

During this period, the products may be returned for repair, or replacement with equivalent products at our discretion. The warranty covers parts and labor costs only.

StarTech.com does not warrant its products from defects or damages arising from misuse, abuse, alteration, or normal wear and tear.

Limitation of Liability

In no event shall the liability of **StarTech.com** Ltd. and **StarTech.com** USA LLP (or their officers, directors, employees or agents) for any damages (whether direct or indirect, special, punitive, incidental, consequential, or otherwise), loss of profits, loss of business, or any pecuniary loss, arising out of or related to the use of the product exceed the actual price paid for the product.

Some states do not allow the exclusion or limitation of incidental or consequential damages. If such laws apply, the limitations or exclusions contained in this statement may not apply to you.

Hard-to-find made easy. At **StarTech.com**, that isn't a slogan. It's a promise.

StarTech.com is your one-stop source for every connectivity part you need. From the latest technology to legacy products — and all the parts that bridge the old and new — we can help you find the parts that connect your solutions.

We make it easy to locate the parts, and we quickly deliver them wherever they need to go. Just talk to one of our tech advisors or visit our website. You'll be connected to the products you need in no time.

Visit www.startech.com for complete information on all StarTech.com products and to access exclusive resources and time-saving tools.

StarTech.com is an ISO 9001 Registered manufacturer of connectivity and technology parts. **StarTech.com** was founded in 1985 and has operations in the United States, Canada, the United Kingdom and Taiwan servicing a worldwide market.

Reviews Share your experiences using **StarTech.com** products, including product applications and setup, what you love about the products, and areas for improvement.

StarTech.com Ltd. 45 Artisans Cres. London, Ontario N5V 5E9 Canada FR: fr.startech.com DE: de.startech.com	StarTech.com LLP 2500 Creekside Pkwy. Lockbourne, Ohio 43137 U.S.A. ES: es.startech.com NL: nl.startech.com	StarTech.com Ltd. Unit B, Pinnacle 15 Gowerton Rd., Brackmills Northampton NN4 7BW United Kingdom IT: it.startech.com JP: jp.startech.com
--	--	---




To view manuals, videos, drivers, downloads, and more visit www.startech.com/support

For the latest information and specifications visit

www.startech.com/BEZ4MOD

Manual Revision: 01/15/2020

	<p>StarTech.com BEZ4MOD Single-Module Conference Table Box [pdf] User Manual BEZ4MOD Single-Module Conference Table Box, BEZ4MOD, Single-Module Conference Table Box, Module Conference Table Box, Conference Table Box, Table Box, Box</p>
--	--

References

- [StarTech.com conçoit et fabrique une vaste sélection de pièces d'ordinateur, de câbles, de commutateur KVM, de racks... | France](#)
- [Pezzi per computer, cavi, switch KVM, server rack e soluzioni per reti | Italia](#)
- [IT & A / V](#)
- [StarTech.com ontwerpt en produceert een enorme selectie computeronderdelen, kabels, KVM-switches, serverracks en... | Nederland](#)
- [StarTech.com | IT Pro's Trusted Source for Connectivity Accessories](#)
- [Connectivity Box - Conference Table - Modular Housings | StarTech.com](#)
- [Drivers & Downloads | StarTech.com Support](#)
- [StarTech.com Support](#)