



Starlyf Light and Movement Sensor Lights Instruction Manual

[Home](#) » [Starlyf](#) » Starlyf Light and Movement Sensor Lights Instruction Manual 



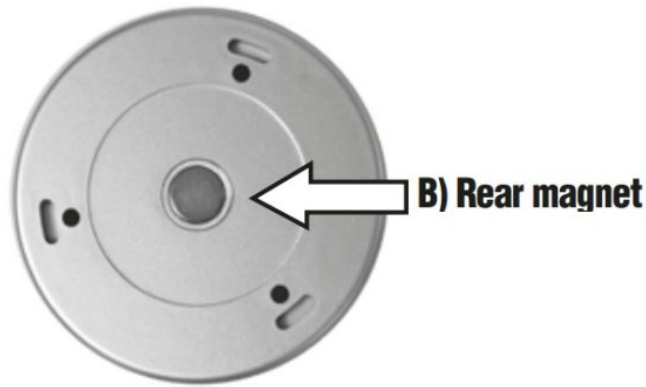
Light and Movement Sensor Lights Instruction Manual



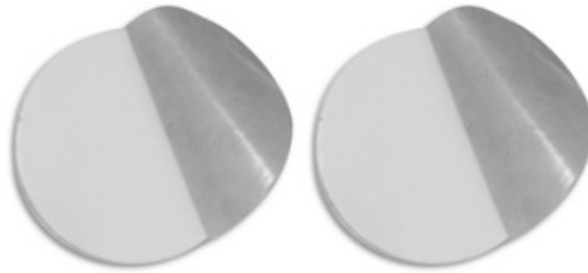
Contents

- [1 Light and Movement Sensor Lights](#)
- [2 WARNINGS](#)
- [3 THE SET INCLUDES](#)
- [4 INSTRUCTIONS FOR USE](#)
- [5 CLEANING AND MAINTENANCE](#)
- [6 QUALITY WARRANTY](#)
- [7 Documents / Resources](#)
 - [7.1 References](#)

- A) STARLYF® LIGHT & MOVEMENT SENSOR LIGHTS (2 units)
A) STARLYF® LIGHT & MOVEMENT SENSOR LIGHTS (2 unidades)
B) Rear magnet



- C) Double-sided adhesive pads (x 2)



Thank you for purchasing STARLYF® LIGHT & MOVEMENT SENSOR LIGHTS, the practical LEDs with light and motion sensor that allow you to quickly and easily illuminate any dark space. Simply attach the lights to the desired surface using the magnet or double-sided adhesive pad. When the product detects darkness and movement, it lights up!

IMPORTANT: THE LED WILL NOT TURN ON IF THERE IS LIGHT IN THE AREA. THE LED WILL TURN ON ONLY IN TOTAL DARKNESS WHEN MOVEMENT IS DETECTED.

Before using the product for the first time, please read all these instructions to ensure you use the product and accessories correctly.

WARNINGS

- Read these instructions carefully and completely.
- Do not stare at the LED.
- Do not immerse the product in water.
- Do not use the product if it is damaged or defective.
- This product is not a toy. Keep out of reach of children.
- Do not mix different types of batteries or new and old batteries.
- Always keep new batteries in the original packaging and away from metal objects that could cause them to short-circuit.
- Remove the batteries from the unit if you do not plan to use it for an extended period of time.
- Never expose batteries to fire, as they may explode.
- Batteries that are not rechargeable should not be recharged.
- Do not allow children to play with batteries.
- Do not tamper with the device in any way. The device should be handled or repaired only by an authorized professional.
- This product was not designed to be used by anyone (including children) with reduced physical, sensory or mental abilities, or by people without adequate experience or knowledge, unless they are supervised by someone responsible for their safety or are given instructions on how to use the device. Children should be

supervised to ensure they do not play with the device.

- Store your STARLYF® LIGHT & MOVEMENT SENSOR LIGHTS in a dry place free of moisture.
- Do not leave the product exposed to direct sunlight or in a hot environment.
- Do not use the product for any purpose not recommended in this manual.

THE SET INCLUDES

2 x STARLYF® LIGHT & MOVEMENT SENSOR LIGHTS
2 x Double-sided adhesive pads
1 x Instruction manual

INSTRUCTIONS FOR USE



Inserting the Batteries

1. Turn the rear cover of your STARLYF® LIGHT & MOVEMENT SENSOR LIGHTS anti-clockwise and insert three 1.5 V AAA batteries (not included) in the corresponding spaces in the correct position, in accordance with the polarity indicated on the product:
2. Once you have inserted the batteries correctly, replace the cover by turning it clockwise until it is fully attached.
3. Your Starlyf® Sensor Lights (Image A) are now ready to use!

How to Attach the Product

You can attach your STARLYF® LIGHT & MOVEMENT SENSOR LIGHTS to metal surfaces using the magnet on the rear (Image B). The magnet will stick to all types of ferromagnetic metals, such as iron, cobalt, nickel, and related alloys.

If you wish to attach the lights to non-metallic surfaces, you can use the double-sided adhesive pad (Image C). Simply remove the paper protector from one side of the pad and stick the pad to the rear of the product, in the centre. Then remove the paper protector from the other side of the pad and stick the product to the desired surface.

Using the Product

The lights will turn on automatically when the surrounding area is in darkness and the sensor detects movement within three metres.

NOTE: If the area is not in darkness, the lights will not turn on even when movement is detected nearby.

If no movement is detected, the product will turn off automatically after 30 seconds.

CLEANING AND MAINTENANCE

To clean your STARLYF® LIGHT & MOVEMENT SENSOR LIGHTS, carefully wipe the surface of the product using a microfibre cloth.

QUALITY WARRANTY

This product is covered by a warranty against manufacturing defects subject to the time periods stipulated by the legislation in force in each country.

This warranty does not cover damage resulting from inadequate use, negligent commercial use, abnormal wear and tear, accidents or improper handling.

CAUTION:

DISPOSAL OF MATERIALS



A symbol of a crossed-out wheeled bin means you should find out about and follow local regulations about disposing of this kind of product.

Do not dispose of this product as you would other household waste.

Dispose of this device in accordance with the corresponding local regulations.

Electrical and electronic appliances contain hazardous substances that can have harmful effects on the environment and/or human health and should be recycled properly.

Australia & New Zealand only

This product has the benefit of certain Consumer Guarantees.

These are prescribed by the Australian Consumer Law & the New Zealand Consumer Guarantees Act 1993 both of which provide protection for consumers. There is no express warranty for this product in Australia or New Zealand. The above paragraph refers to other countries.

 <p>Industex, s.l. Av. P. Catalanes 34, 8ª planta 08950 Esplugas de Llobregat Barcelona – Spain e-mail: industex@industex.com www.industex.com (+34) 93 254 71 00</p>	 <p>ISL GmbH Ostseestr. 3 D 26131 Oldenburg Germany www.is-deutschland.com +49 (0) 441 95 07 08-0</p>
 <p>17 rue de la Garenne 95310 SAINT-OUEN L'AUMONE FRANCE venteo@venteo.fr www.venteo.fr (+33) 1 34258551</p>	 <p>P.IVA: 06919170966 Via Donizetti 3 20122 Milano-Italia www.islitaly.com industex@industex.com</p>
 <p>PO Box 202, Spit Junction NSW 2088, Australia Best Direct (International) Benelux B.V Hogebrinkerweg 19B 3871 KM Hoevellaken The Netherlands, www.bestdirect.nl Best Direct International Ltd, Asiakaspalvelu – Suomi: 029 193 0300 www.bestdirect.fi 077 033 0300 www.bestdirect.se Kundtjänst – Sverige</p>	<p>Made in China</p>

International patents pending . All imitations will be prosecuted .

STARLYF® is a registered EU trade mark

 **Starlyf®**
LIGHT & MOVEMENT SENSOR LIGHTS



Documents / Resources



[Starlyf Light and Movement Sensor Lights](#) [pdf] Instruction Manual
Light and Movement Sensor Lights, Movement Sensor Lights, Sensor Lights, Lights

References

- [User Manual](#)

Manuals+. Privacy Policy

This website is an independent publication and is neither affiliated with nor endorsed by any of the trademark owners. The "Bluetooth®" word mark and logos are registered trademarks owned by Bluetooth SIG, Inc. The "Wi-Fi®" word mark and logos are registered trademarks owned by the Wi-Fi Alliance. Any use of these marks on this website does not imply any affiliation with or endorsement.