

STARLINK Standard X-Frame Base Mount Stand Installation Guide

Contents

- [1 STARLINK Standard X-Frame Base Mount Stand](#)
- [2 Product Information](#)
- [3 Product Usage Instructions](#)
- [4 What's in the Box](#)
- [5 Download the Starlink App](#)
- [6 Plug in Cable and Install Mast Adapter](#)
- [7 Documents / Resources](#)
 - [7.1 References](#)
- [8 Related Posts](#)



STARLINK Standard X-Frame Base Mount Stand

Product Information

Specifications:

- Product: X-Frame Base
- Included in the Box: X-Frame Base, Mast Adapter, Mast

Product Usage Instructions

1. Download the Starlink App
Scan the QR code to download the Starlink App.
2. Find Mounting Location
Your Starlink needs a clear view of the sky to stay connected with satellites. Use the obstruction tool in the App to select a suitable mounting location.
3. Remove Kickstand
Squeeze the release tab and pull the kickstand away from its fixed location.
4. Insert Mast
Insert the mast into the adapter until it clicks into place.

5. Route Cable Through Mast

Insert the Starlink cable through the hole in the mast and up through the slot in the adapter.

6. Plug in Cable and Install Mast Adapter

Plug the cable into your Starlink ensuring it's fully inserted. Then, slide the adapter in until it clicks into place.

7. Install Starlink into X-Frame Base

Slide the mast into the X-Frame Base and rotate your Starlink to face a clear view of the sky.

8. Align Your Starlink

Use the alignment tool in the App to ensure your Starlink is properly aligned for optimal performance.

FAQ

- **Q: What should I do if my Starlink connection is interrupted?**

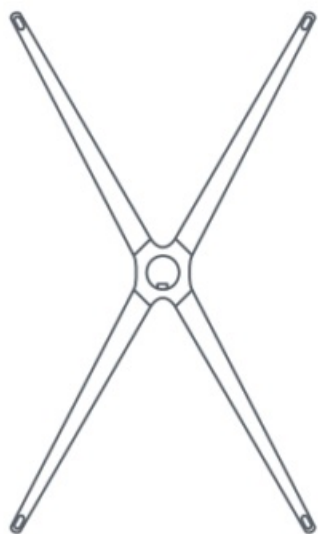
A: Check for any obstructions blocking the connection between your Starlink and the satellite. Ensure your mounting location has a clear view of the sky.

- **Q: How do I know if my Starlink needs to be realigned**

A: The Starlink App will provide an alert if realignment is needed. Follow the instructions on the App to adjust the alignment.

STANDARD X-FRAME BASE INSTALL GUIDE

What's in the Box



X-Frame Base



Mast Adapter



Mast

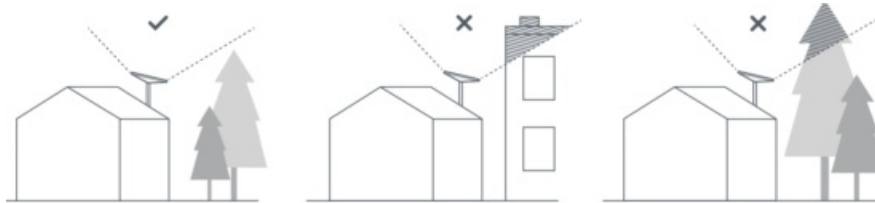
Download the Starlink App

Scan the QR code to download the Starlink App.



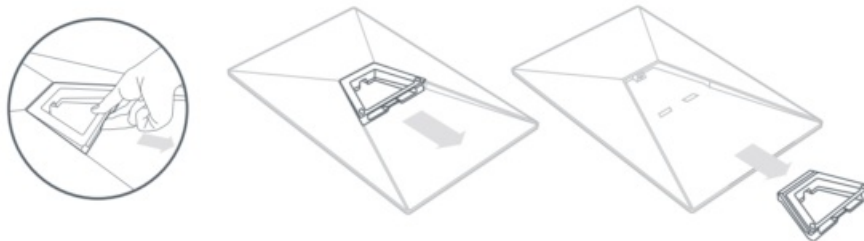
Find Mounting Location

Your Starlink needs a clear view of the sky so it can stay connected with satellites as they move overhead. Objects that obstruct the connection between your Starlink and the satellite, such as a tree branch, pole, or roof, will cause service interruptions. Use the obstruction tool in the App to ensure you have selected a suitable mounting location.



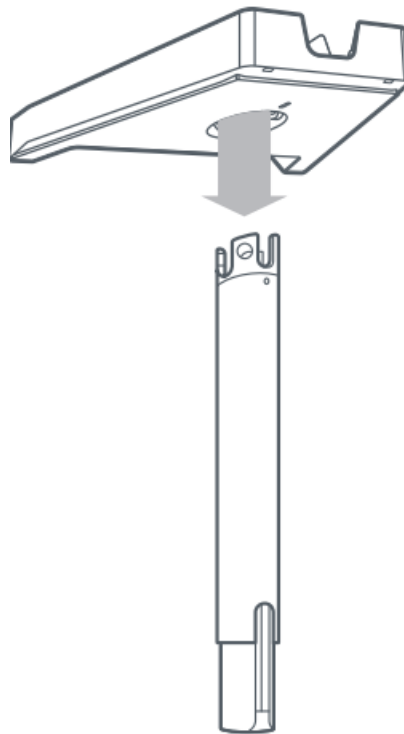
Remove Kickstand

Squeeze the release tab and pull it away from its fixed location.



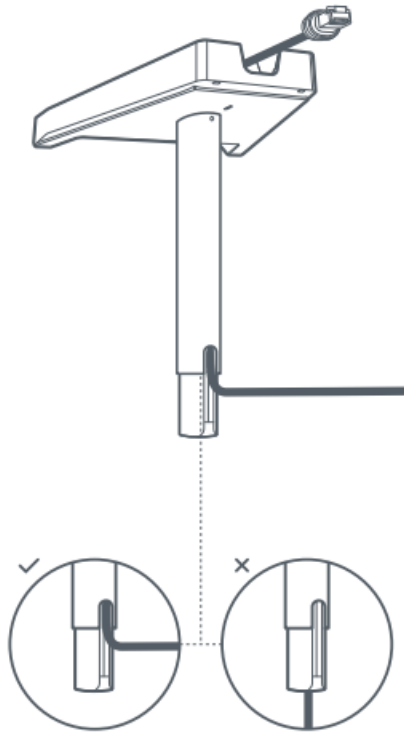
Insert Mast

Insert the mast into the adapter until it clicks into place.



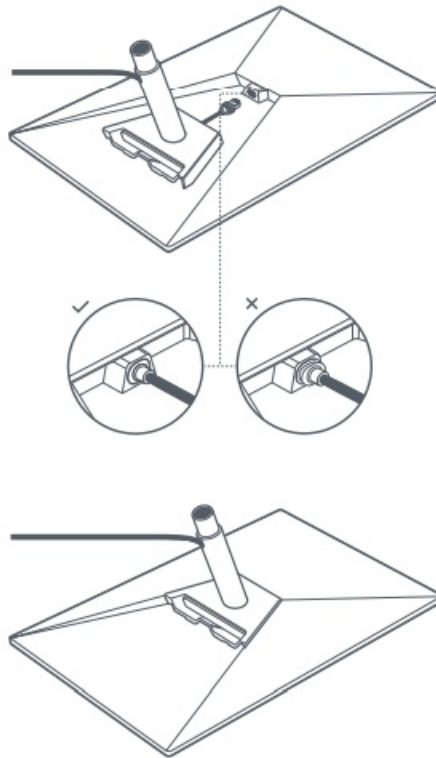
Route Cable Through Mast

Insert the Starlink cable through the hole in the side of the mast and up through the slot in the adapter.



Plug in Cable and Install Mast Adapter

- Plug the cable into your Starlink.
- Ensure the plug is fully inserted such that the plug face is flush with the surface.
- Next, slide the adapter in until it clicks into place.



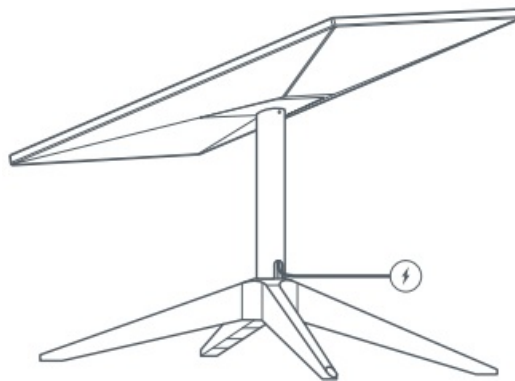
• Install Starlink into X-Frame Base

Slide the mast into the X-Frame Base. Rotate your Starlink to face a clear view of sky.




Align Your Starlink

- An alert on the App will show if you need to rotate Starlink to be properly aligned.
- Click the alert to use the alignment tool.



Documents / Resources

	<p>STARLINK Standard X-Frame Base Mount Stand [pdf] Installation Guide Standard X-Frame Base Mount Stand, X-Frame Base Mount Stand, Base Mount Stand, Mount Stand, Stand</p>
---	--

References

- [User Manual](#)

[Manuals+.](#) [Privacy Policy](#)

This website is an independent publication and is neither affiliated with nor endorsed by any of the trademark owners. The "Bluetooth®" word mark and logos are registered trademarks owned by Bluetooth SIG, Inc. The "Wi-Fi®" word mark and logos are registered trademarks owned by the Wi-Fi Alliance. Any use of these marks on this website does not imply any affiliation with or endorsement.