



STARLINK

PERFORMANCE WEDGE MOUNT



Contents [[hide](#)]

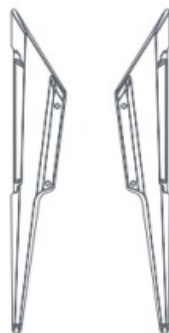
[1 What's in the Box](#)

[2 INSTALL](#)

[3 Documents / Resources](#)

[3.1 References](#)

What's in the Box



Wedge Mount



M6 Machine Screws
(8x)

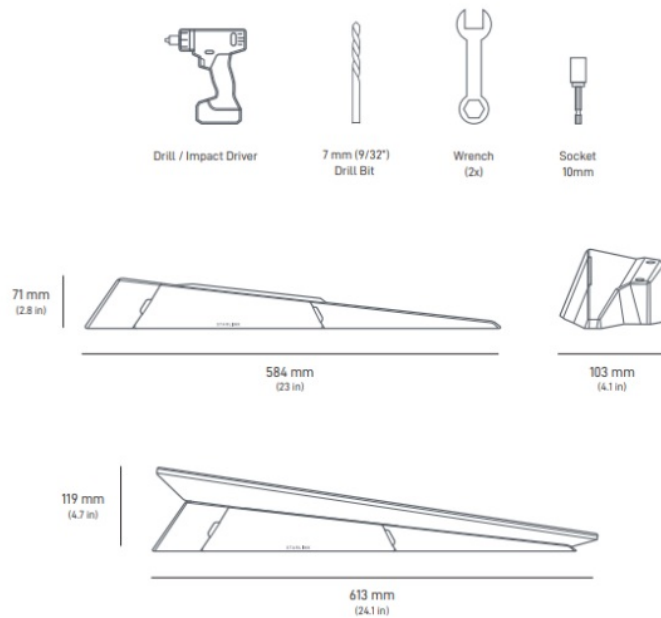


M6 Lock Nuts
(4x)



4mm Hex Key
(1x)

Recommended Tools



INSTALL

1. Download the Starlink App

Scan the QR code to download the Starlink App.

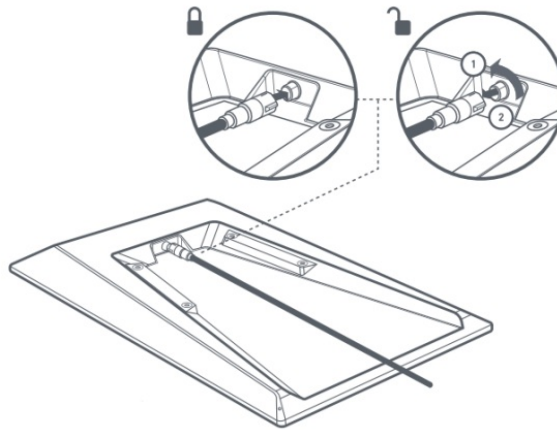


<https://setup.starlink.com>

2. Plug in Starlink Cable

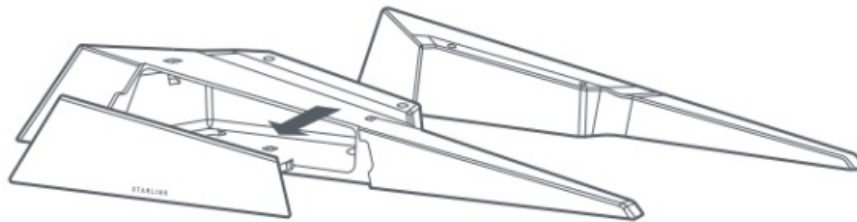
Align the Performance Connector end of the Starlink cable indicated by the orange notch and plug into your Starlink by holding the end of the plug and firmly inserting into the dish.

If the Starlink cable needs to be removed, rotate the collar counterclockwise and pull to disconnect from your Starlink.



3. Remove Covers

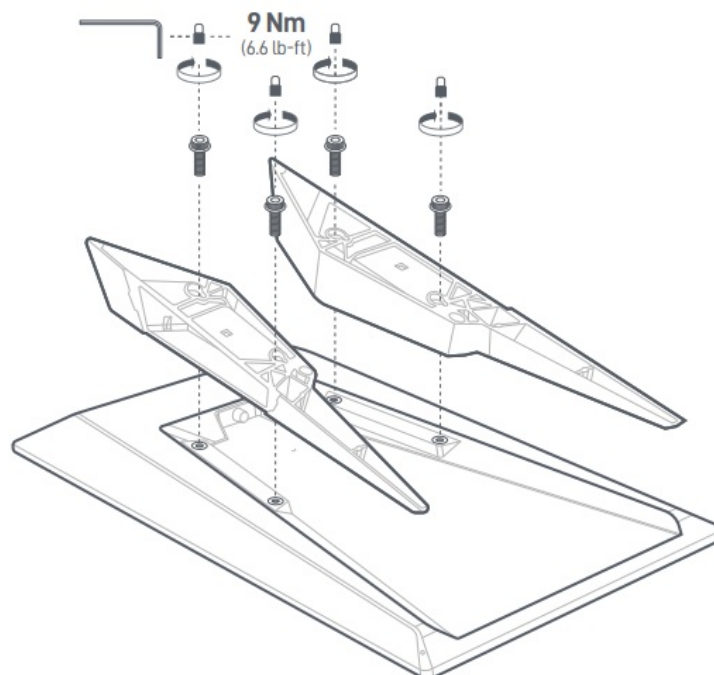
Remove covers from the sides of the wedge mount.



4. Install Mount Onto Starlink

Align each half of the wedge mount such that the bolt access opening points to the outside of the dish.

Install the provided 16mm socket head screws through the mount into the back of the Starlink. Tighten the four screws using the hex key to lock the Wedge Mount in place. Tighten screws in all 4 corners until bolts reach 9 Nm (6.6 lb-ft). Ensure the mount is firmly attached to the Starlink.



5. Find Mounting Location

Your Starlink needs a clear view of the sky so it can stay connected with satellites as

they move overhead. Objects that obstruct the connection between your Starlink and the satellite will cause service interruptions. Use the obstructions tool in your App to ensure you have selected a suitable mounting location.

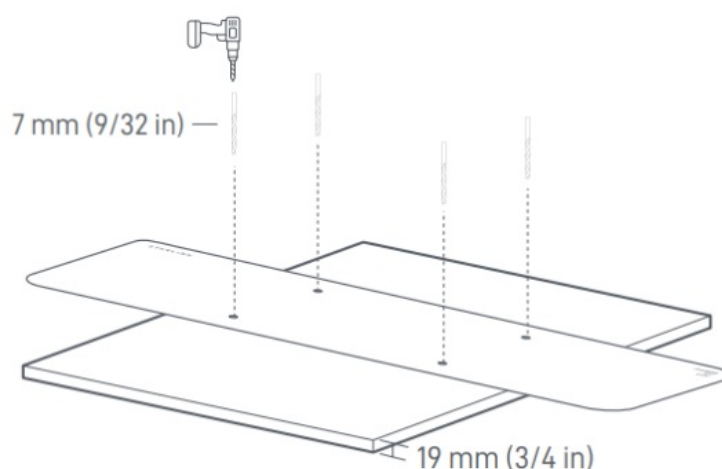


6. Drill Pilot Holes

Using the template on the Quick Start Guide, drill the four mounting holes on the desired mounting location.

Drill the holes with a 7 mm (9/32 in) drill bit. Remove burrs around holes and make sure the surface is free of debris.

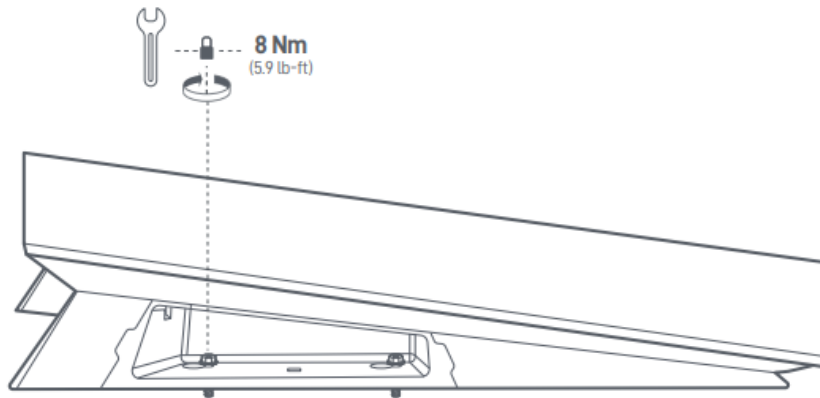
The included machine screws can accommodate mounting surfaces up to 19 mm (3/4 in) thick.



7. Install Screws

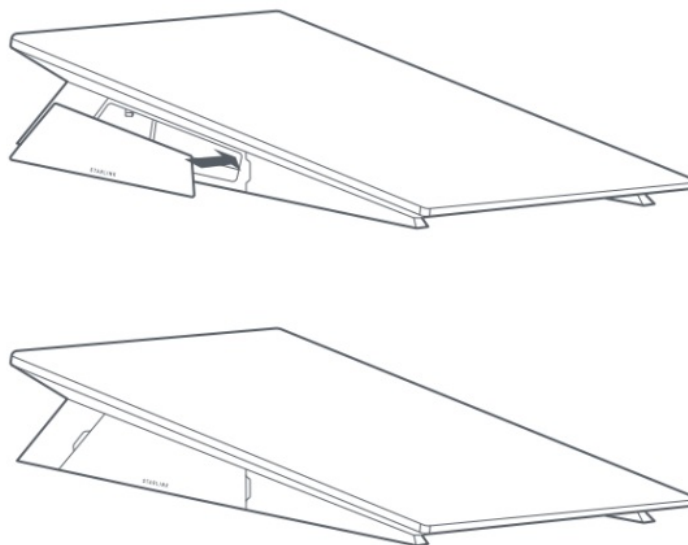
Install the 4 35mm machine screws into the pre-drilled holes. Fit the 4 M6 nuts onto the end of the screws that protrude from the mounting surface. Using a 10mm wrench,

tighten the machine screws to 8 Nm (5.9 lb-ft).



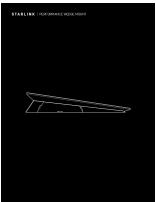
8. Install Covers

Install covers onto the sides of the Wedge Mount until secured in place.



STARLINK

Documents / Resources

	STARLINK SC-SL-01 Performance Wedge Mount [pdf] User Guide SC-SL-01 Performance Wedge Mount, SC-SL-01, Performance Wedge Mount, Wedge Mount, Mount
---	---

References

- [User Manual](#)

Mount, Performance Wedge Mount, SC-SL-01, SC-SL-01 Performance Wedge Mount, Starlink, Wedge

Starlink Mount

Leave a comment

Your email address will not be published. Required fields are marked *

Comment *

Name

Email

Website

☐ Save my name, email, and website in this browser for the next time I comment.

Post Comment

Search:

e.g. whirlpool wrf535swhz

Search

[Manuals+](#) | [Upload](#) | [Deep Search](#) | [Privacy Policy](#) | [@manuals.plus](#) | [YouTube](#)

This website is an independent publication and is neither affiliated with nor endorsed by any of the trademark owners. The "Bluetooth®" word mark and logos are registered trademarks owned by Bluetooth SIG, Inc. The "Wi-Fi®" word mark and logos are registered trademarks owned by the Wi-Fi Alliance. Any use of these marks on this website does not imply any affiliation with or endorsement.