



Staples AG120G 2.4GHz Wireless Mouse and Keyboard Set User Guide

[Home](#) » [Staples](#) » Staples AG120G 2.4GHz Wireless Mouse and Keyboard Set User Guide

Contents [[hide](#)]

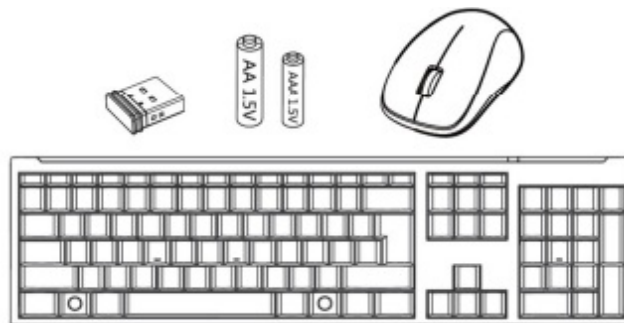
- [1 Staples AG120G 2.4GHz Wireless Mouse and Keyboard Set](#)
- [2 package contents](#)
- [3 installation](#)
- [4 set wireless connection](#)
- [5 the mouse features](#)
- [6 keyboard use guide](#)
- [7 Troubleshooting](#)
- [8 technical data](#)
- [9 FCC statement](#)
- [10 Documents / Resources](#)
- [11 Related Posts](#)

STAPLES®

Staples AG120G 2.4GHz Wireless Mouse and Keyboard Set



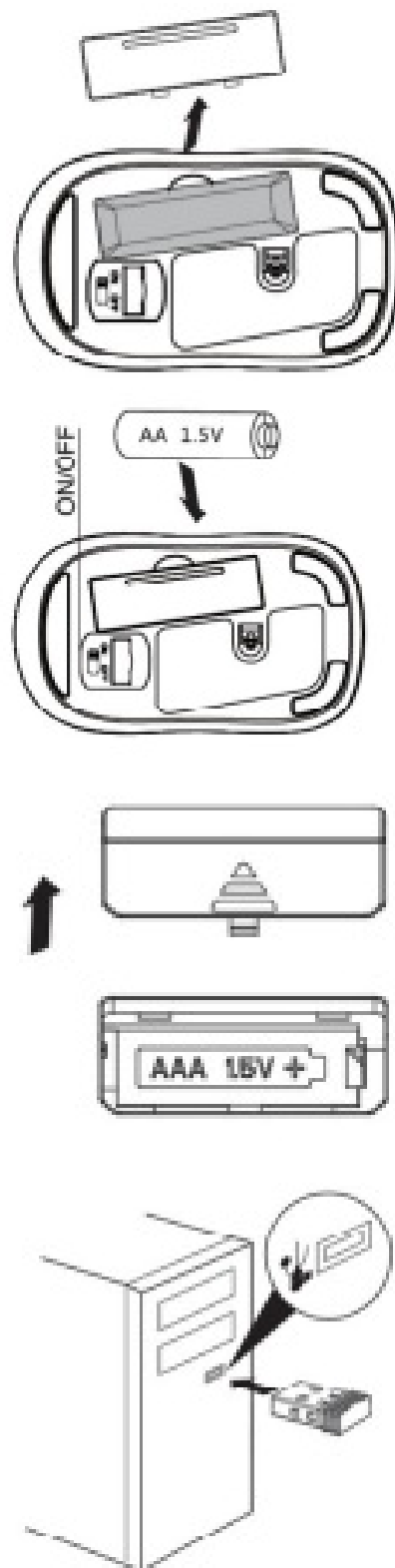
package contents



- wireless RF mouse
- wireless RF keyboard
- USB nano receiver
- 1xAA battery (mouse)
- 1 XAAA battery (keyb0ard)
- user guide

Thank you for buying model 28036. Please carefully read this user guide before use.

installation



1. Switch the ON/OFF button to OFF, and then open the mouse battery protection Over.
2. Insert one AA battery once you open the music battery protection cover, as illustrated in the diagram. Close the battery protection cover after inserting the battery.
3. Insert one AAA battery in the keyboard as illustrated in the diagram. Close the battery protection cover after inserting the battery.
4. Plug the USB receiver into an available USB port on your computer. Press any key to start.

set wireless connection

The 2.4GHz wireless combo (keyboard, mouse, and USB receiver) is pre-paired before packing. Users can use the wireless combo after installing the batteries.

1. Turn on the computer.
2. Plug the USB receiver into an available USB port on your computer.
3. Install a battery into both the keyboard and mouse. Press any key to start.

If your wireless combo does not pair with the USB receiver, you will need to download the Pairing Software Tool to your computer. The Pairing Software Tool will allow you to pair the mouse, keyboard and receiver according to the instructions. Upon completion of setting the wireless connection, the mouse and keyboard are now ready for use.

the mouse features

an energy-saving mode

- The mouse comes with a built-in energy-saving mode. This means, that when you stop using it for 0.2s, it will automatically switch into the energy-saving mode, which results in an extend the battery life.

precise DPI

- The mouse comes with 1000 DPI, ideal for office use, gaming, and entertainment.

receiver build-in design

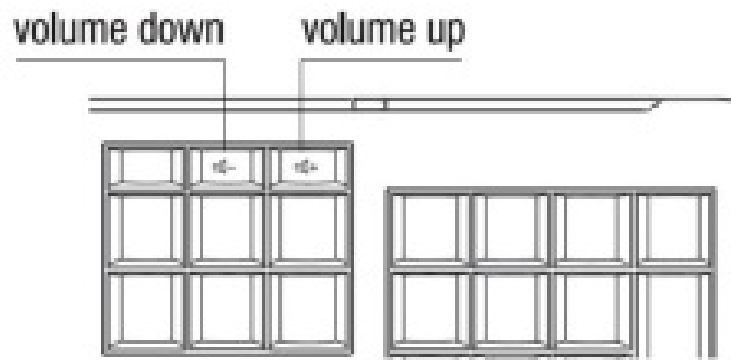
- The mouse is built with a storage compartment for the nano USB receiver. When the nano USB receiver is not in use, it can be stored at the bottom of mouse.

on/off switch



- On the bottom of the mouse, there is an ON/OFF switch.
- If you are not using the mouse for a long time, please switch it to OFF to save power. If you need to use the mouse, simply switch it to ON.

keyboard use guide



laser engraving technology

- The characters on the keyboard are permanently etched using laser engraving technology.
- The laser engraving technology allows the keyboard characters to resist corrosion and always remain legible.

volume control

- Volume up and down buttons for easy control.

locks indicator

- The keyboard has a Lock indicator. When the Lock is on, the LED lights on and become dim and gradually turns off. When the Lock is off, the LED flash quickly several times then gradually goes off.

spill-proof design

- The keyboard is spillproof.
- When the keyboard gets wet, just shake it , dry it and continue to use it.

Do not immerse the keyboard in the water when cleaning. Clean with a dry cloth. Battery Disposal Do not heat, perforate or dispose of batteries in fire. After replacing with new batteries, please recycle the old batteries.

Troubleshooting

1. If the combo has delay phenomenon during use, please move the keyboard/mouse closer to the receiver and then use again. Or you can remove the battery from the keyboard and mouse for a while then install the battery to use again.
2. If the light on the bottom of the mouse doesn't light when use, please check whether the battery is put properly and the switch is moved to ON mode.
3. Do not mix old and new batteries and Do not mix alkaline, standard (Carbon-Zinc), or rechargeable (Nickel Cadmium) batteries.

The above technical data is for reference only.

technical data

- Frequency band: 2403MHZ 2479MHz
- Power supply: 1.5V
- Mouse operation current: s6mA
- Keyboard operation current: s3mA
- Acceleration: up to 10G
- Resolution: 1000 DPI
- Operation distance: 32 ft

FCC statement

Caution: Changes or modifications to this unit not expressly approved by the party responsible for compliance could void the user’s authority to operate the equipment.
NOTE: This equipment has been tested and found to comply with the limits for Class B digital device, pursuant to part 15 of the FCC Rules. These limits are designed to provide reasonable protection against harmful interference in a residential installation. This equipment generates,uses and can radiate radio frequency energy and, if not installed and used in acordance with the instructinns, may cause harmfiul interference to radio commiunications. However, there is no guarantee that interference will not occur in a particular installation. If the equipment does cause harmful interference to radio or television reception, which can be determined by turning the equipment off and on, the user is encouraged to try to correct the interference by one or more of the following measures:

- Reorient or relocate the receiving antenna.
- Increase the separation between the equipment and the receiver.
- Connect the equipment into an outlet on a circuit different from that to which the receiver is connected.
- Consult the dealer or an experienced radio/TV technician for help


This device complies with Part 15 of the FCC Rules. Operation is subject to the following two conditions:

1. This device may not cause harmful interference, and
2. This device must accept any interference received, including interference that may cause undesired operation.

Manufactured for

Staples the Office Superstore, LLC. 500 Staples Drive Framingham, MA 01702 USA 1-800-425-0049

Documents / Resources

	Staples AG120G 2.4GHz Wireless Mouse and Keyboard Set [pdf] User Guide GK381-BK, GK381BK, OO9GK381-BK, OO9GK381BK, RG50-1004, RG501004, OO9RG50-1004, OO9RG501004, MA102W-BK, MA102WBK, OO9MA102W-BK, OO9MA102WBK, AG120G, 28036, 2.4GHz Wireless Mouse and Keyboard Set, AG120G 2.4GHz Wireless Mouse and Keyboard Set
---	--