

Contents [[hide](#)]

- [1 STANLEY NA557427 Radio Module](#)
- [2 Specifications](#)
- [3 Assembly Instruction](#)
- [4 Overview](#)
- [5 Product Usage Instructions](#)
- [6 FCC STATEMENT](#)
- [7 FAQs](#)
- [8 Documents / Resources](#)
 - [8.1 References](#)

STANLEY

STANLEY NA557427 Radio Module

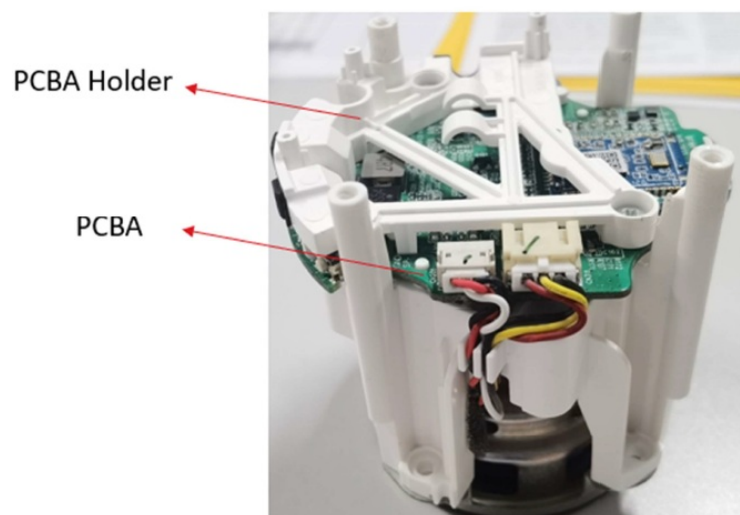
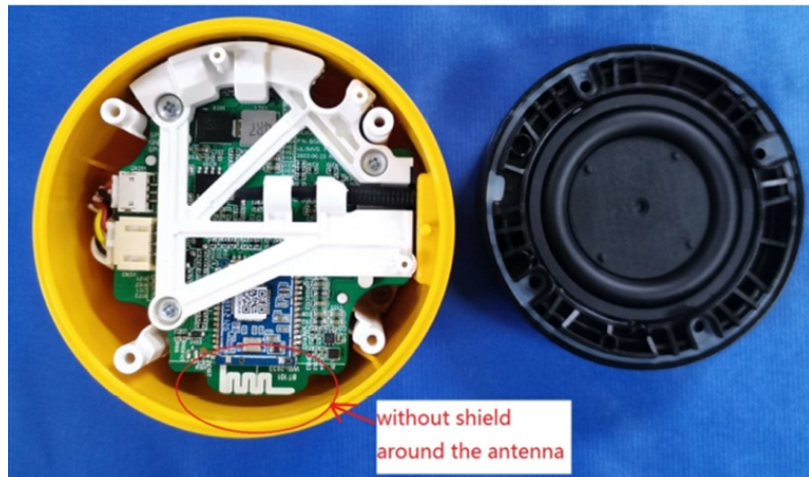


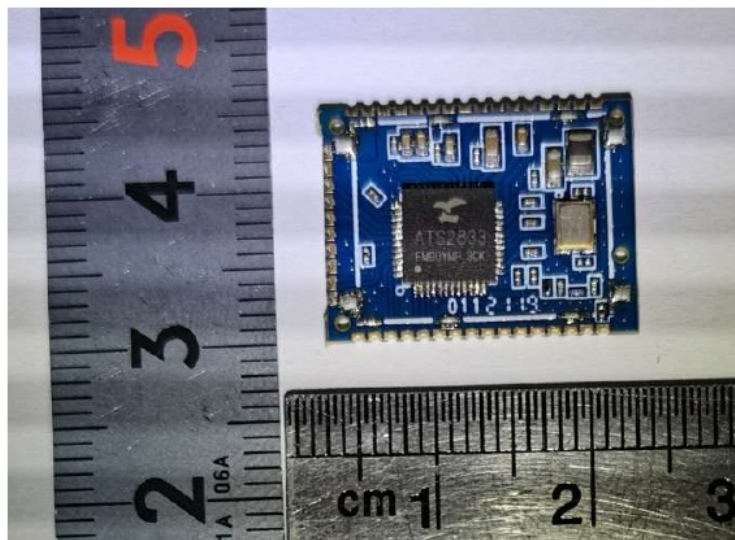
Specifications

- **Wireless Certifications:** Bluetooth

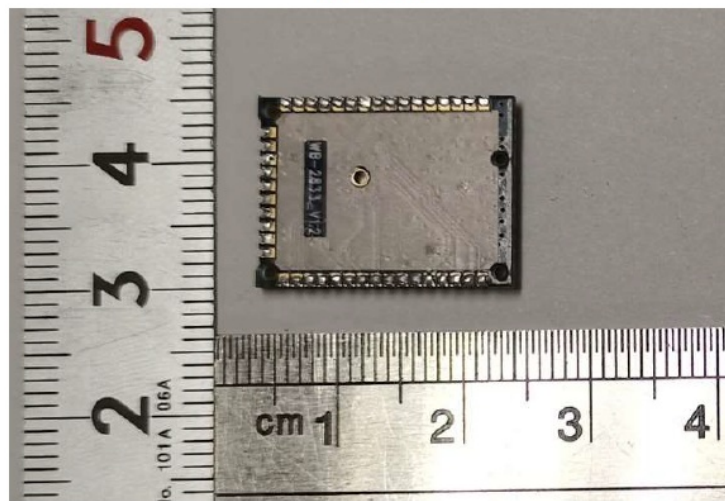
- **Operational Standards:** Operates with a 6 foot (1.8 meters) or shorter extension cord
- **Manufacturer:** Stanley Black and Decker
- **Manufacturer Address:** 701 East Joppa Road, Towson, MD 21286
- **Website:** www.stanleyblackanddecker.com

Assembly Instruction





Bluetooth module



Bluetooth module

Overview

The STANLEY NA557427 is a Bluetooth Low Energy (BLE) radio module developed by Stanley Black & Decker. Designed for smart connectivity, this module enables short-range wireless communication in compatible Stanley products. It is FCC-certified (ID: YJ7-NA557427) and Industry Canada approved (IC: 9082A-NA557427), ensuring compliance with key regulatory standards in North America. This compact BLE module supports seamless integration into devices requiring wireless control or monitoring functions. It operates under FCC Part 15, meaning it won't cause harmful interference and must accept any interference it receives. The NA557427 is typically used in power tools, smart accessories, or electronic devices requiring reliable Bluetooth connectivity.

Key highlights include

- Bluetooth Low Energy transmission

- 100 ft (30 m) connectivity range (environment-dependent)
- Compact form factor for embedded applications
- Out-of-range alerts for user convenience
- Safe use guidelines including extension cord length limitations

Ideal for OEMs and engineers, the STANLEY NA557427 offers a reliable BLE solution for enhancing smart tool ecosystems.

Installation & Setup

- **Integrate into Compatible Devices:** This module is designed for internal use in Stanley tools or products. Do not attempt standalone use.
- **Power Requirements:** Use only with specified power sources as defined by the host device. Avoid exceeding voltage/current ratings.

Extension Cord Usage:

- Use only a 6-foot (1.8 m) or shorter extension cord if needed.
- Never use a longer cord—it may result in overheating, fire risk, or non-compliance with safety standards.

Bluetooth Operation

- **Automatic Pairing:** Once powered, the module enters pairing mode automatically for initial connection.
- **Connectivity Range:** Up to 100 ft (30 meters) in open areas. Walls and obstacles may reduce this range.
- **Reconnection:** If moved out of range, the module will automatically reconnect once back within signal distance.
- **Out-of-Range Alert:** The module may trigger a notification when the host device goes beyond Bluetooth range (if supported by the host app or system).

Safety & Compliance

- **Interference Warning:** Operates under FCC Part 15. May cause or receive

interference. Should not be used near sensitive medical devices like pacemakers or hearing aids.

Radio Certification:

- FCC ID: YJ7-NA557427
- IC: 9082A-NA557427
- Certified for modular use with specific design and antenna requirements.

Maintenance & Handling

- **Do Not Disassemble:** Opening or tampering with the module will void warranties and violate FCC rules.
- **Environmental Conditions:** Use in dry environments. Keep away from water, moisture, or high temperatures.
- **Cord Condition:** If using with a power cord, replace immediately if damaged or frayed.

Important Notes

This module is not a standalone consumer product. It must be integrated by qualified professionals into compatible Stanley or OEM devices. Always consult the product's full integration manual if you're an engineer or installer.

Product Usage Instructions

Safety Information

Ensure the product is operated with a 6-foot extension cord or shorter to comply with safety standards.

Bluetooth Usage

For Bluetooth products, refer to the specific guidelines provided for CAN ICES-3(B)/NMB-3(B) or CAN ICES-5(B)/NMB-5(B).

Extension Cord Guidelines

Use a 6-foot extension cord or shorter for safe operation. Avoid using damaged extension cords. Do not exceed the recommended length of the extension cord.

FCC STATEMENT

Wireless Certifications and Safety Information

- This device is either CAN ICES-3(B)/NMB-3(B) or CAN ICES5(B)/NMB-5(B) compliant.
- This device complies with Part 15 of the FCC Rules and Industry Canada License-exempt RSS standard(s). Operation is subject to the following two conditions: 1) This device may not cause harmful interference, and 2) This device must accept any interference received, including interference that may cause undesired operation.

This equipment has been tested and found to comply with the limits for a Class B digital device, pursuant to Part 15 of the FCC Rules. These limits are designed to provide reasonable protection against harmful interference in a residential installation. This equipment generates, uses, and can radiate radio frequency energy and, if not installed and used in accordance with the instructions may cause harmful interference to the radio communications. However, there is no guarantee that Interference will not occur in a particular installation. If this equipment does cause harmful interference to radio or television reception, which can be determined by turning the equipment off and on, the user is encouraged to try to correct the interference by one or more of the following measures:

- Reorient or relocate the receiving antenna
- Increase the separation between the equipment and the receiver
- Connect the equipment to an outlet on a circuit different from that to which the receiver is connected, or
- Consult the dealer or an experienced radio/TV technician for help.

Changes or modifications to this equipment not expressly approved by the manufacturer could void the user's authority to operate the device. Stanley Black and Decker, 701 East Joppa Road, Towson, MD 21286 www.stanleyblackanddecker.com (JUN25) Part No. xxxxx Copyright © 2025

FAQs

Q: What should I do if my extension cord is damaged?

A: Replace the damaged extension cord immediately with a new one that meets the required specifications.


Q: Can I use a longer extension cord with the product?

A: It is recommended to use a 6-foot extension cord or shorter for safe operation as per the standards.

Q: Where can I find more information about Bluetooth usage?

A: For Bluetooth products, refer to the specific guidelines provided for CAN ICES-3(B)/NMB-3(B) or CAN ICES-5(B)/NMB-5(B).

Documents / Resources

	STANLEY NA557427 Radio Module [pdf] User Manual YJ7-NA557427, YJ7NA557427, na557427, NA557427 Radio Module, NA557427, Radio Module, Module
--	---

References

- [User Manual](#)

📄 Module, na557427, NA557427 Radio Module, Radio Module, Stanley, YJ7-NA557427, Stanley YJ7NA557427

Leave a comment

Your email address will not be published. Required fields are marked *

Comment *

Name

Email

Website

☐ Save my name, email, and website in this browser for the next time I comment.

Post Comment

Search:

e.g. whirlpool wrf535swhz

Search

[Manuals+](#) | [Upload](#) | [Deep Search](#) | [Privacy Policy](#) | [@manuals.plus](#) | [YouTube](#)

This website is an independent publication and is neither affiliated with nor endorsed by any of the trademark owners. The "Bluetooth®" word mark and logos are registered trademarks owned by Bluetooth SIG, Inc. The "Wi-Fi®" word mark and logos are registered trademarks owned by the Wi-Fi Alliance. Any use of these marks on this website does not imply any affiliation with or endorsement.