



STaGE WORKS Mini Pearl 1024 DMX Controller User Manual

[Home](#) » [STaGE WORKS](#) » STaGE WORKS Mini Pearl 1024 DMX Controller User Manual 



1024 DMX Console User Manual

Contents

- 1 Overview
 - 1.1 Specifications
- 2 Operation
 - 2.1 Front Panel
 - 2.2 2.2 Glossaries
- 3 Patch
 - 3.1 Create
- 4 Controlling fixtures
- 5 Shapes
- 6 Scene
 - 6.1 Run scenes
- 7 Chase
 - 7.1 Create
 - 7.2 Delete a step
 - 7.3 Step time
 - 7.4 Include steps
- 8 Appendix: Personality
~uilder]
- 9 Documents / Resources
- 10 Related Posts

Overview

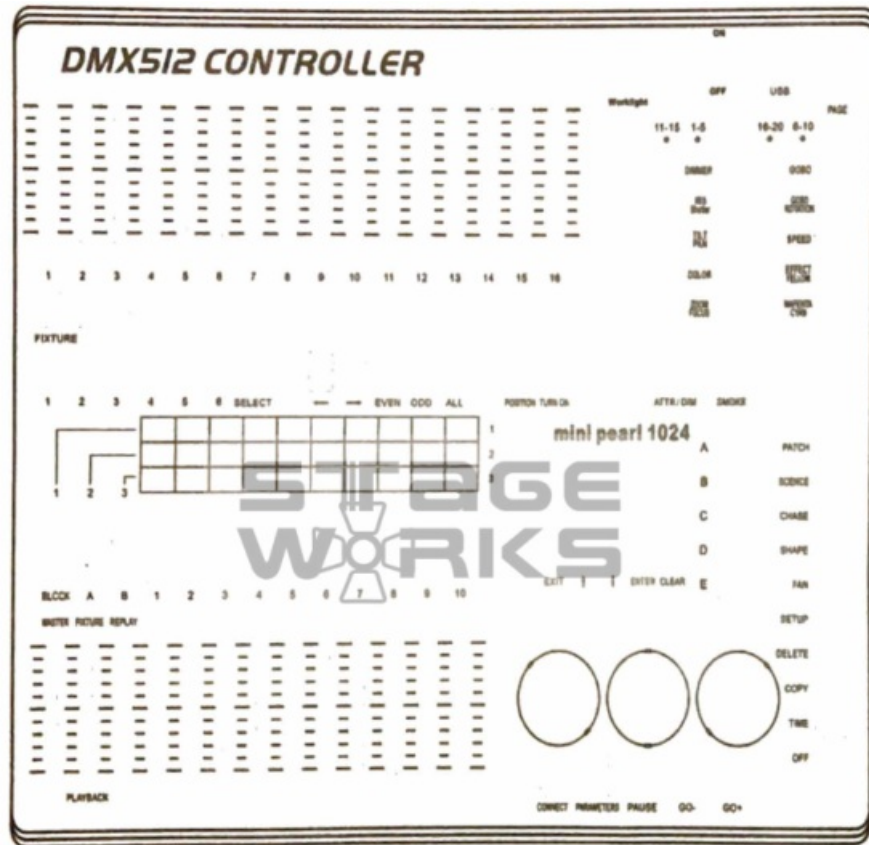
1024 DMX controller can control up to 96 fixtures. It is compatible with the library in Avolite Pearl R20 format and featured with built-in shape effects of pan/tilt circle, RGB rainbow, beam dimming wave, etc. 10 scenes and 5 built-in shapes can be output simultaneously. Sliders can be used to output scenes and adjust the intensity of the dimmer channels in the scenes.

Specifications

DMX channel	1024
Fixture	96
Channels for each fixture	40 primary + 40 fine-tune
Library	Acolyte Pearl R20 library supported
Re-patched Fixture address	Yes
Swop Pan/Tilt I	Yes
Reversed channel output I	Yes
Channel slope modification	Yes
Scene	60
Scenes to run simultaneously	10
Scene step	600
Time control of scenes..	Fade in/out LTP slope
Shapes for each scene	5
Scene and dimmer slider	Yes
Interlocked slider	yes
Button control AI 41	Yes
Shape generator A	Shapes of Dimmer, Pan/Tilt, RGB, CMY, Color, Gobo, Iris and Focus
Shapes to run simultaneously	5
Master slider	Global, playback, fixture
Real-time blackout	Yes
Channel value by wheel	Yes
Channel value by slider	Yes
Dimmer by slider	Yes
USB Memory	FAT32 supported

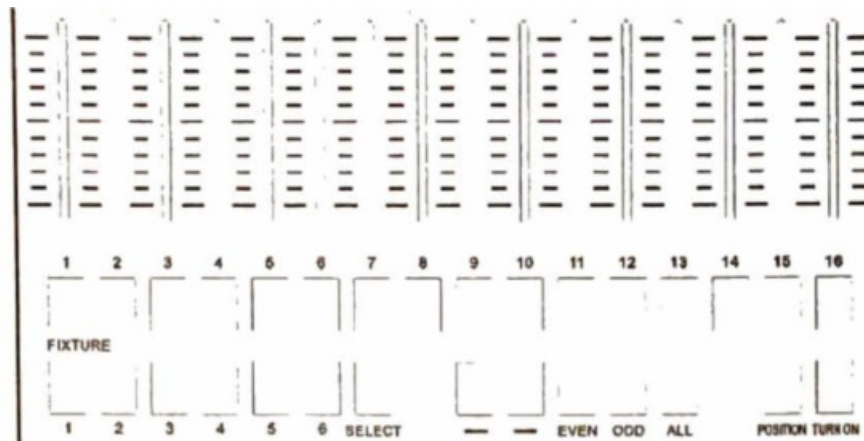
Operation

Front Panel



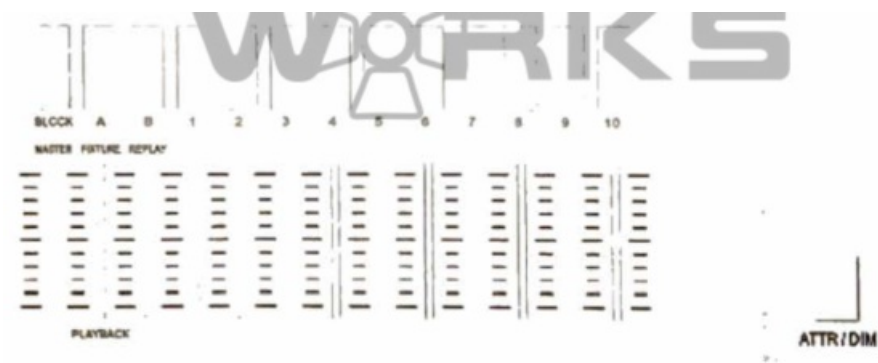
The front panel consists of several areas:

- Fixture area: including 16 <Fixture> buttons, <Page> 16 sliders and 6<pase> buttons.



There are 6 pages of fixtures supporting up to 96 fixtures. The <Attribute/Level> button with 2 LED indicators can be used to switch the functions of the 16 sliders. When <Attribute> is activated, the sliders are used to adjust the value of the attribute above the sliders; When <Level> is activated, the sliders are to adjust the intensity of fixtures.

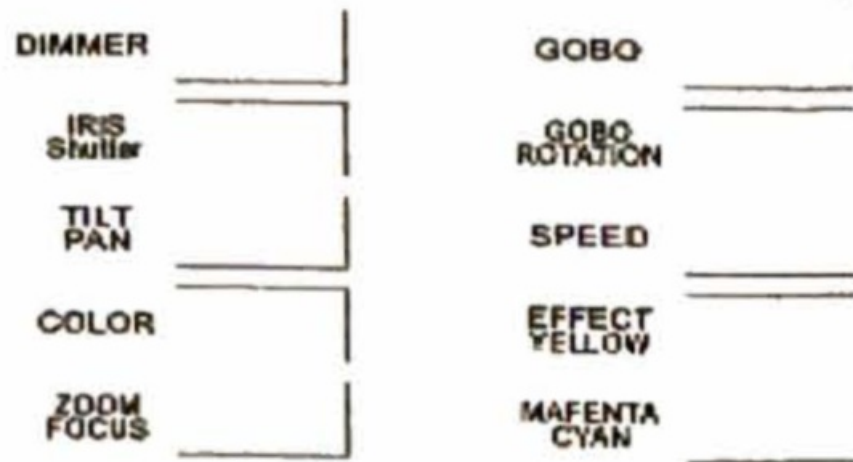
- Playback area: Including 10 <Swap> buttons, 10 <Flash> buttons, 10 playback sliders, 5 <Page> buttons and 1



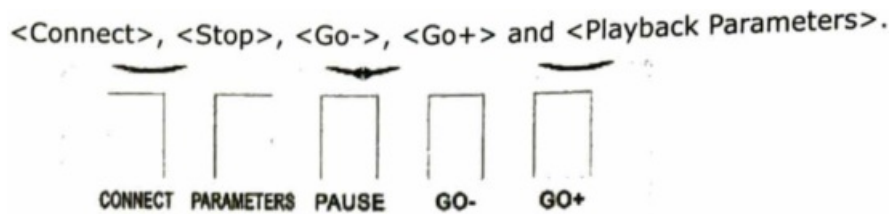
<DBO> button

<DBO> button

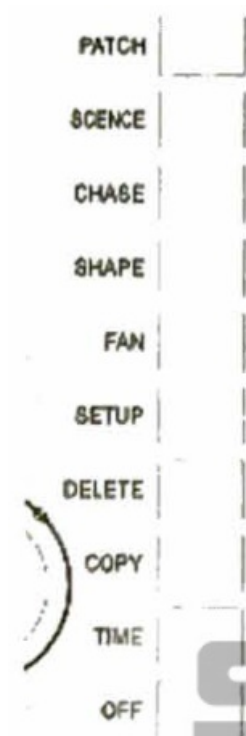
Attribute area: Including 8 <Attributes> buttons and 3 <Attribute Banks> buttons. Each < Attributes> button carries two attributes, respectively controlled by <Wheel A> and <Wheel B>. When <Attribute/Level> button is switched at <Attribute> side, the sliders in the fixture area can be used to control the corresponding attributes.



- Playback control area: Including 5 playback control buttons:



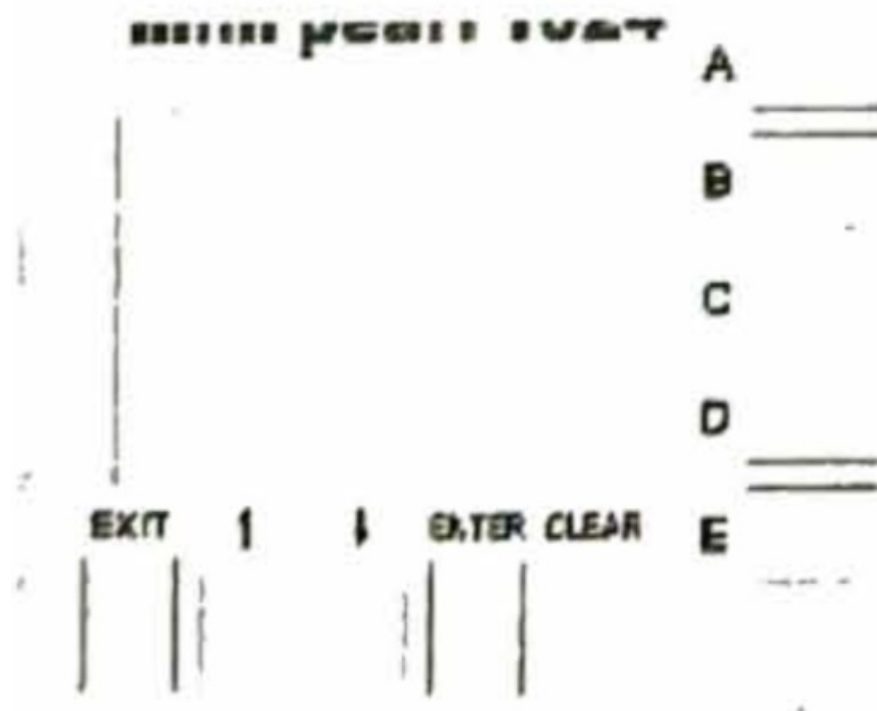
- Function area: Operations about scene storage and copy or fixture patch can be implemented in this area. The LED indicators On these buttons are to show the status of the buttons.



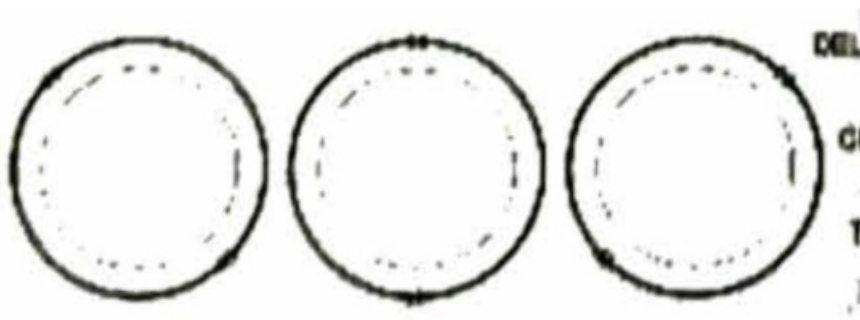
- Fixture control area: including buttons of <Previous>, <Next>, <HiLight>, <All>, <Odd>, <Even>, <Locate> and <ML>, which are functions to control the fixtures.



- LCD area: The LCD is to display the menu, implement the menu operations and clear the Programmer.



- wheel area: <Wheel A> and <Wheel B> are to control the attributes and chase time. <Wheel Value> is to adjust the value in the display.



2.2 Glossaries

- HTP: The type of the channels with the highest output (highest takes precedence), normally for dimmer channels.
- LTP: The type of the channels with the latest output (latest takes precedence), for non-dimmer channels.
- Fade in: The intensity of the light changes from dark to bright.
- Fade out: The intensity of the light changes from bright. to dark.

Patch

Create

3.1.1 Patch dimmer

1. Press and hold <Patch>, then, press <A>[Patch Dimmer].
2. An address will be displayed at Line 2 on the screen for patching.
Roll <Wheel Value> to change the address; Press <D>[AutO calculate Addr.] to automatically achieve a suitable address.
3. TO patch a single dimmer, press a handle Fixture button. TO patch a range of dimmers, hold down the Fixture button for the first dimmer in the range, then press the last Fixture button in the range. The range of dimmers will be patched to sequential DMX addresses.
4. TO patch another dimmer to the same handle, enter the new DMX channel and press the Swop button again

3.1.2 Patch moving light fixtures

1. Press and hold <Patch>, then, press ., [Patch ~ixtures].
2. Select a library from the controller or from a USB memory.
3. Press <Up> or <Down> to browse into the library; Press the soft key to select. When a library in US6 memory is selected, the library will be added or updated into the controller.
4. An address code will be displayed at Line 2 on the screen for patching. Roll <Wheel Value> to change the address code; Press <D>[Auto calculate Addr.] to automatically achieve a suitable address code..
5. Press a desired <Fixture> button to patch an intelligent fixture. You can patch a range of fixtures by holding down the first and last Fixture buttons of the range, the same as for dimmers. Unlike dimmers, you cannot patch more than one fixture onto a fixture button. If the fixture button is already used, the patch will fail. Use a different fixture button or delete the fixture already on the fixture button if you don't want it anymore.

3.1.3 View the patching

Press <E>[Patch Information] to view the patching info.

2.3 Edit

3.2.1 Changing the DMX address

You can re-patch a fixture to a different DMX address or a DMX output line. All programming is kept.

1. If not in the Patch menu, Press <Patch> to enter.
2. Press <C> [Re-patch Fixture].
3. An address will be displayed at Line 2 On the screen for patching.
ROI <Wheel Value>, to change the address.
4. Once the address code IS set, press a desired <Fixture> button to patch.
5. Press <Enter> to confirm.

3.2.2 Deleting a patched fixture

1. If not in the Patch menu, press <Patch> to enter.
2. Press <Delete> to enter the Delete Patch menu.
3. Press a <Fixture> button to select a desired fixture or roll *Wheel Value> to select the desired address of the fixture, then, press <Enter> to confirm the deletion.

3.2.3 Patch Utilities

Invert – Allows you to invert an attribute of a fixture, so when you set zero the output will be full. You cannot Invert some attributes.

1. If not in the Patch menu, press <Patch> to enter.
2. Press <D>[Patch Utilities]. Then, press [Set Invert].
3. Select fixture and select attribute, then, press <C> or <D> to modify.
Set/Reset Instant mode – When the fades LTP (movement) channels between two memories, the LTP values normally change smoothly. You can set Instant mode to make the channel snap instantly to the new value.

1. If not in the Patch menu, press <Patch> to enter.
2. Press <D>[Patch Utilities]. Then, press <C> [Set Instant Mode].
3. Select fixture and select attribute, then, press <C> or <D> to modify.
Swap pan and tilt – If you have some fixtures mounted sideways, it can be useful to swap the pan and tilt channels over.
 - 1) If not in the Patch menu, press <Patch> to enter.
 - 2) press <D>[Patch Utilities]. Then, press <D> [Swop Pn].
 - 3) press <Up> or <Down> to view the Pan/tilt swap Info. Press the soft key to modify.

Controlling fixtures

4.1 Select fixtures

- **Select a single fixture:** Press the handle Fixture buttons for the fixtures you want. The LED in the Fixture button Comes on for selected fixtures
- **Select a range of fixtures:** To select a range of fixtures, hold down the Fixture button for the first fixture then

press the Swop button for the last fixture.

- **Stepping through selected fixtures one at a time:** If you have selected a range of fixtures, our console has functions to step through the selected fixtures one at a time. This can make it easier to program a range of fixtures because you don't have to select each one manually. Pressing <t> or c+> in "Fixture control area", it will select the fixtures in the range one at a time. If <HiLight> button is activated, The selected fixture from the range will light up, and the other fixtures will go out.

8 Activate previously selected fixtures: To activate all the previously selected fixtures, press <All> in "Fixture control area".

- **Select fixtures at odd positions:** Press <Odd>, the fixtures at odd positions of the selected fixtures will keep selected, but, those at even positions will be de-selected. This is related to the order that you selected the fixtures before pressing <Odd>.
- **Select fixtures at even positions:** Press <Even>, the fixtures at even positions of the selected fixtures will keep selected, but, those at odd positions will be de-selected. This is related to the order that you selected the fixtures before pressing <Even>.

4.2 Modify an attribute value

1. Select a fixture.
2. Select an attribute. Then, use <Wheel A> and <Wheel B> to adjust the value. Or, switch to Attribute mode to adjust the attribute value by sliders.
3. To see the output values, press <Output>.

4.3 Advanced options

- **Locate fixtures:** Select fixtures; Press <Locate> in "Fixture control area" to locate the fixtures. Fixture locating is provided in the fixture library.
- **Align fixtures:** Select fixtures; Press <ML> in "Fixture control then <A>, all the attribute values of all the selected fixtures will be aligned to the first fixture.
- **Align attributes:** Select fixtures and select attributes; Press <ML> in "Fixture control area" then , the currently selected attribute values of all the selected fixtures will be aligned to the values of the first fixture.

4.4 Fan mode

Fan mode automatically spreads out the values on a selected range of fixtures. If used on pan and tilt, the result is spreading out "rays" of light beams. The first and last fixtures of the range are affected most, and the central fixtures are affected least. The amount of fan can be set using the wheels. As with shapes, the order in which you select the fixtures sets how the fan effect works. The fixtures you select first and last will be the ones that change most. If you use a group to select the fixtures, the order is that in which the fixtures in the group were selected when it was created. The fan effect, while normally used on pan or tilt attributes, can be applied to any attribute.

1. Select fixtures;
2. Select attributes;
3. Press <Fan> in "Function area" (indicator on);
4. Set the amount of fan using the wheels;
5. Press <Fan> in the "Function area" (indicator off) again to close the fan shape mode when you've finished.

4.5 Clear the Programmer

- Clear the Programmer: Press <Clear> in the menu area.
- Clear a certain fixture of a certain attribute from the Programmer: Select the desired fixture. Press <Off> in the function area then [OFF Selected Fixtures] to delete the fixture from the Programmer; or, press <OFF> then <C>/<D> to delete the attributes of the fixture from the Programmer.

Shapes

A shape is simply a sequence of values that can be applied to any attribute of a fixture. A “circle” shape, for example, applied to the pan and tilt attributes, would cause the fixture to move its beam around in a circular pattern. You can set the center point of the circle, the size of the circle and the speed of the circle movement. In addition to beam position shapes, there are a large number of other shapes available in this console. The shapes are defined for a particular attribute such as colour, dimmer, focus and so on. Some shapes will not work with some fixtures; focus shapes, for example, can produce nice “focus pull” effects on fixtures that have DMX focusing, but will do nothing on fixtures which don’t have focusing. When you use a shape with more than one fixture, you can choose to either apply the shape identically to all the fixtures or offset them so that the shape runs along the fixtures creating “wave” or “ballyhoo” type effects. This is called the spread of the shape. In 1024, 5 shapes can be run simultaneously, but, only 1 shape is editable.

5.1 Select a shape

1. Select fixtures;
2. Press <Shape> in “Function area”;
3. Press <A> [Playback a shape];
4. Press <Up> or <Down> to select a shape type and confirm with a soft key;
5. Press <Up> or <Down> to select a shape and confirm with a soft key.

5.2 Edit a shape

1. Press <Shape> in “Function area”;
 2. Press [Edit a shape];
 3. Highlight the shape that you want to edit with a soft key; then, press <Exit> to exit this menu;
 4. Press <C> [Shape Parameters];
 5. Highlight the parameter that You want to modify with a soft key; then, change the value with <Wheel Value>.
- Size: The amplitude.
- Speed: The running speed of the shape.
- Repeat: Repeats Pattern after repeat number of fixtures.
- Spread: How the in~tml’lentS are spread across the pattern, O=even spread.

5.3 Delete a shape

1. Press <Shape> in “Function area”;
2. Press <Delete> in “Function area”;
3. Highlight the shape that you want to delete;
4. Press <Enter> to confirm.

Scene

There are many functions in the controller to create a complicated lighting effect; and, the most fundamental part is a scene, in which you can store a "look" you have created using your light. There are 60 playbacks on 5 pages, each page with 12, which can be used to store scenes and chases. In Running Mode, the slide and the <Playback* buttons are used to control playbacks; in Programming Mode, the buttons in the <Playback> area are for editing.

6.1 Create

- Clear the programmer, then program the fixtures,
- Edit a stage effect the fixtures; built-in shapes can be added. A scene can record five shapes. Only those fixtures that have been edited can be included in the Programmer;
- Press <Scene>. At this time, the LED indicators of the ~Swap* buttons without any scene stored will keep flashing; those with a scene will keep always on; and, those with a chase will be off;
- Press <C> to select store by channel or store by the fixture. Press , if necessary, to highlight [Stage];
Record by Fixture: All the channel data of all the fixtures that have been edited and selected will be stored.
Record by channel: Only the data of the channels that have been edited will be stored.
- Select a mode. (See Section 6.5).
- Press an empty <Swap> button to store. If you press a ~Swap* button with a single step scene already stored, then, it will be overwritten by pressing <Enter>.

6.2 Include

1. Press <Copy>;
2. Press a desired <Swap> button to include a scene;
3. Press <Enter> to confirm.

6.3 Copy

1. press <Copy>, then, press a <Swap> button that stores a scene;
2. press an empty <Swap> button to copy.

6.4 Delete

1. press <Delete> to enter the Delete menu;
2. press a desired <Swap> button to delete; press it again to confirm,

6.2 Include

1. Press <Copy>;
2. Press a desired <Swap> button to include a scene;
3. Press <Enter> to confirm.

6.3 Copy

1. press <Copy>, then, press a <Swap> button that stores a scene;
2. press an empty <Swap> button to copy.

6.4 Delete

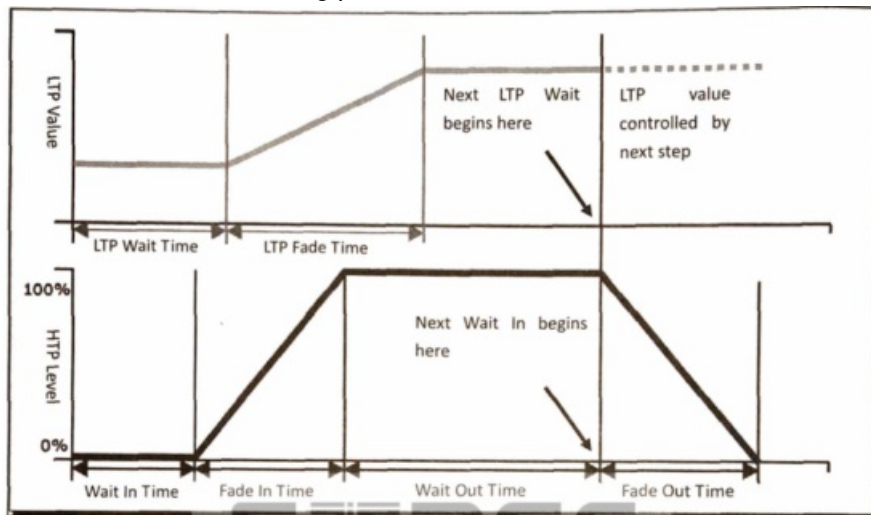
1. press <Delete> to enter the Delete menu;
2. press a desired <Swap> button to delete; press it again to confirm,

6.5 Time

press <Time>, then, press a desired <Playback> button for editing. YO" can set a fade in and fade out time independently for every memory. The fades only affect HTP (intensity) channels. There is a separate LTP timer that allows you to set movement times. LTP channels which were set to Page 12 of 17

press <Time>, then, press a desired <Playback> button for editing. YO" can set a fade in and fade out time independently for every memory. The fades only affect HTP (intensity) channels. There is a separate LTP timer which allows you to set movement times. LTP channels which were set to "In during Patching ignore LTP fade times.

The effect of the times is shown in the following picture.



The times you enter are also affected by the scene mode:

- Mode 0 – No timing information is used. The HTP channels faded with the 0-100% position with playback faders.
- Mode 1 -Channels fade as set by the HTP and LTP fade times (except Instant LTP channels). If you enter times for a Mode 0 memory, it will automatically change to Mode 1. If HTP times are set to zero, the HTP levels will fade with the fader
- Mode 2 -HTP channels fade as set by the HTP times, or with the fader if times are set to zero. LTP channels are controlled by the fader position (except Instant channels). Set the LTP fade time to 0 to use this mode.

Run scenes

Set the live mode as the running mode; Raise fader, the corresponding scene on the current page will be output. Press a <Playback> button, the selected scene will be output while the other playbacks will be closed. The running scenes will be highlighted in the LCD, "S" is scene, "Cn" is Chase.

Chase

.A A S~Wence of one or more pre-recorded steps programmed using the CHASE button. It can be replayed

automatically if desired. Sometimes kl'mwn as SEQUENCE, STACK or Linked Cues. The chase can include 600 Steps in this console.

Create

1. Press <Chase >. In the Playback area, the LED indicators of the <Swap> buttons without any scene stored will keep flashing; those with a chase will keep always on; and, those with a scene will be off;
2. Press a desired <Chase> button to enter the chase menu. At this time, the LCD will show the current page number and the total step number of the multi-step scene; Press <Up> or <Down> to turn the pages;
3. After editing the stage effects, press <C> [Record] to enter the record menu;
4. Press /<C> to select the storage mode;
5. If it comes to the last step, then, press <D>[Record Ad Final Step] to store directly, or, press an off <Swap> button to store in it. To insert or overwrite a step, select a desired position, then, press to overwrite or press <C> to insert a step before the selected one.

Delete a step

Under the Chase menu, press <Delete> to enter the Delete menu; press a desired <Swap> button to delete a step.

Step time

Under the Chase menu, press <Time> then press a desired <swap> button to enter the Time Editing menu. Press <Up> or <Down> to turn the pages; press a soft key to select the options for editing; roll <Wheel Value> to change the values; Press <Enter> to confirm.

The time options include (see the figure on the next page):

[Wait Fade In] – The wait time before an HTP channel fading in [Wait Fade Out] -The wait time before an HTP channel fading out

[Fade In] -The fade in time of an HTP channel

[Fade Out] – The fade out time of an HTP channel

[LTP slope] – The fading time of an LTP channel

[LTP Wait] – The wait time before an LTP channel fading

[connect] – If close the connection, then, the scene running will be paused at this step until <GO+> or <GO-> is pressed.

[Simple step] – The global time of using multi-step scene

[Complex step] – The special time for its own

Include steps

Under the Chase editing menu, press a desired <Swop> button of the step. then, scene data will be imported.

7.5 Global Time

- 1) Under the first level menu, press <Time>;
- 2) Then, press a desired scene. Press <Up> or <Down> to turn the Pages; press a soft key to select the options for editing; roll <Wheel Value> to change the values; Press <Enter> to confirm.

7.6 Delete a scene

- 1) Under the first level menu, press <Delete>;
- 2) Press a desired <Swap> button twice to delete.

7.7 Copy a scene

- 1) Under the first level menu, press a desired <Swap> button;

2) Press another <Swap> button. Then, the scene in the first button is copied into the second one.

7.8 Run chase

Raise a fader, the corresponding scene on the current page will be output.

In the starting menu, press a <Swap> button to output and all other scenes will be closed; Press <Flash>, then, you can flash the fixtures.

7.9 Connect

- When a chase is added to run, it will connect automatically.
- If the current connected chase is not the one that you want to connect, you can press <Connect> then <Swap> to connect.
- If you don't want to connect any chases, then, you can press <Connect> twice to clear all the connections.
- Once the chase are connected, they can be controlled with <Stop>, <Go+> and <Go->. <Go+> and <Go-> are to control the playback direction. To store the running speed, press <Playback Parameters> then [Save Speed & Dir].
- When a new chase is connected, you can use <Wheel A> to control the global speed and <Wheel B> to control the global slope if the current Programmer is empty; But, if the current Programmer is with some data, then, you can press <Connect> then <E>[Change Wh A/B Mode] to switch to the wheel mode, so that you will be able to control the time of the scene. The time under the control of <Wheel A> and <Wheel B> is temporary time; To save the time, press <Playback Parameters> then [Save Speed & Dir]. To restore the previous speed, press <Connect> then <E> to clear the temporary time. Once the speed is save, it cannot be restored.

8.1 Manage US6 memory

To save and load data.

8.2 Wipe data

To wipe all the data or only the playback data off the controller.

8.3 Select Language

Press <Setup>. The LCD will show "English/+*". Press the desire soft key by the LCD to select your language.

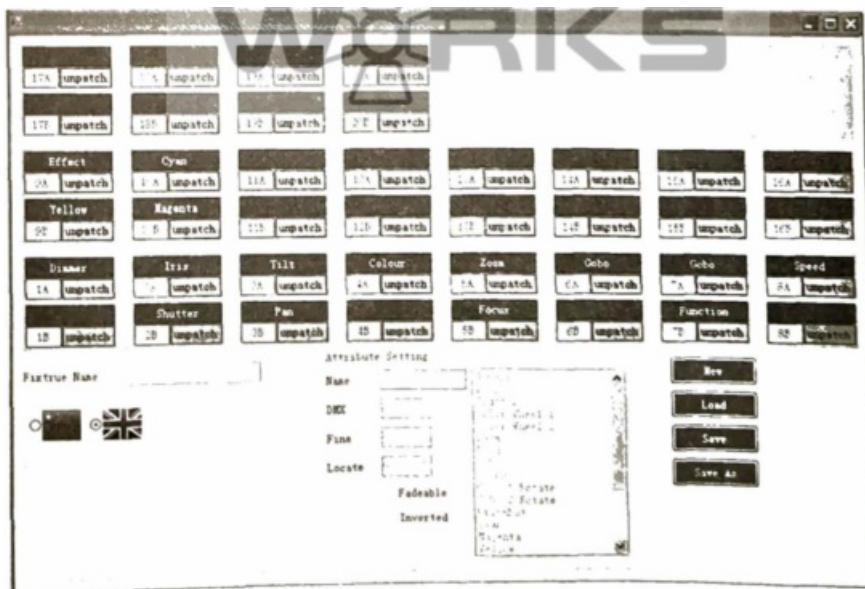
8.4 Manager library

To delete or update the fixture library.

Appendix: Personality ~uilder]

Personality Builder is a software for library edit. A CD with Personality Builder installation program is enclosed in each 1024 package. You can install it into your PC and use it to edit your library. The library files can be saved in a USB memory (FAT32 format) and loaded into 1024.

9.1 Interface of Personality Builder



9.2 How to user Personality Builder

1) Select your language.	7) Input Attribute Name.
2) Press <New> to create a new personality file.	8) If there is a fine channel with the attribute, input
3) Input fixture name.	9) Input value of locate.
4) Select the blue label to set the attribute.	10) Set Fade and invert.
5) Input the DMX number in the Attribute Setting group box.	11) Set another attribute.
6) Select the attribute type.	12) Save the library.

Documents / Resources

	STaGE WORKS Mini Pearl 1024 DMX Controller [pdf] User Manual Mini Pearl 1024, DMX Controller, Mini Pearl 1024 DMX Controller
--	---

