




RZ4-5ARC RZR XP Turbo s 18+ with Ride Command SSV Works 5 Speaker Audio Kit Instruction Manual

[Home](#) » [SSV WORKS](#) » RZ4-5ARC RZR XP Turbo s 18+ with Ride Command SSV Works 5 Speaker Audio Kit Instruction Manual 

Contents

- 1 RZ4-5ARC RZR XP Turbo s 18+ with Ride Command SSV Works 5 Speaker Audio Kit
- 2 What's In The Box
- 3 TOOLS NEEDED FOR INSTALLATION
- 4 PANELS AND DASH DISASSEMBLY
- 5 RUNNING WIRING AND CABLES
- 6 RUNNING WIRING AND CABLES
- 7 TOOLS NEEDED FOR INSTALLATION
- 8 AMP TRAY INSTALLATION
- 9 TOOLS NEEDED FOR INSTALLATION
- 10 TOOLS NEEDED FOR INSTALLATION
- 11 INSTALLATION NOTES
- 12 CONNECTING POWER & GROUND CABLE T BATTERY
- 13 ANTENNA RELOCATION (IF EQUIPPED)
- 14 Documents / Resources
- 15 Related Posts



RZ4-5ARC RZR XP Turbo s 18+ with Ride Command SSV Works 5 Speaker Audio Kit



What's In The Box

pg 2

Disassembly, Wire & Glovebox
Subwoofer Installation



pg 9

Amplifier Plate Installation



pg 10

Kick Panel Speakers
Installation



pg 12

Cage Mount Speakers
Installation



WARRANTY INFORMATION

All SSV Works enclosures are covered by a limited lifetime warranty against defects in material or workmanship. All SSV Works Electronics are covered by a limited 1 year warranty against defects in material or workmanship. All Kicker Speakers are covered by a limited 1 year warranty against defects in material or workmanship. All Kicker Amplifiers are covered by a limited 2 year warranty against defects in material or workmanship. Labor for replacement of defective components is not covered. Contact SSV Works for further warranty information.

Please read and understand these instructions completely before installation to avoid possible injury, or damage to the accessory or vehicle.

TOOLS NEEDED FOR INSTALLATION

T30 & T40 Torx Socket
10mm and 5.5mm
Socket & Ratchet or
Wrench

– 4mm & 5mm Allen Wrench
– #2 & #3 Phillips Screwdriver

– Drill with 13/64", 1/
8", 1/4" & 1/2" Drill bi
ts Panel removal too
l

Wire Crim
pers
Wire Strip
pers

– Scribe or Ma
rker
Utility Knife

PARTS LIST IMAGES



1. Amp Power Wire x2



2. B-H1149 Front Speaker Wire



3. B-H1151 Rear Speaker Expansion



4. Amp Tray with pre-loaded Kicker Amplifiers



5. Amp Tray Base Bracket



6. M6 x 1.0 Screws and Washers x 2



7. Self-Tapping Screw and Washer x 1



8. Zip Ties x 10



9. Fuse Holder with 40A Fuse x2



10. Battery Terminal Cable x2

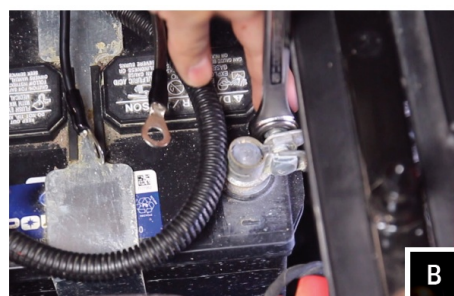


11. Connector Cover with Relief Cut-out

PANELS AND DASH DISASSEMBLY



A

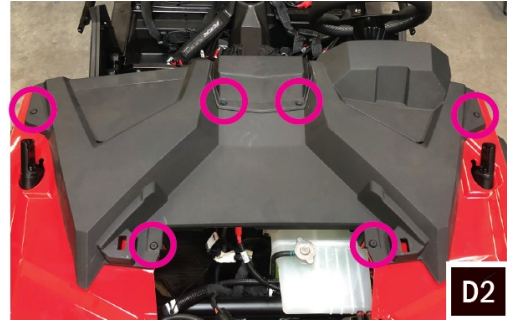


B

- For ease of installation, remove all seats by releasing the handle behind each seat, push forward slightly while lifting
- Disconnect the negative battery cable from the battery.

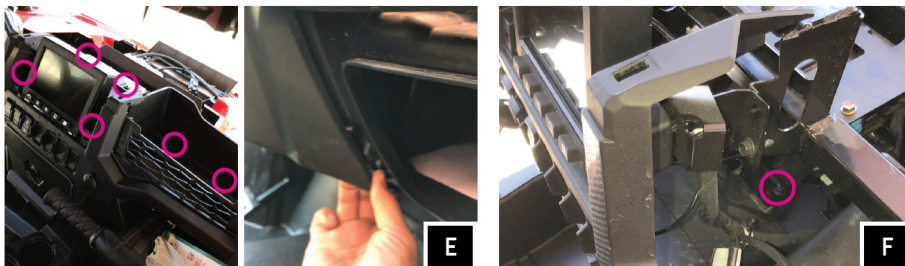


- Remove all of the center console push pins and T-40 Torx. For 4-seat models, disconnect the harness attached to the 12v accessory socket.

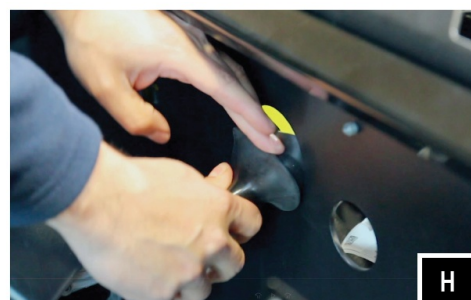


- Remove hood by turning locking pins and lifting up.
 - Unscrew the (4) T40 torx screws and extract the (2) push pins from the top-center Ride Command bezel. Lift and remove the top-center Ride Command bezel. From inside the machine, pull the dash towards you to unclip. Once unclipped remove the dash.

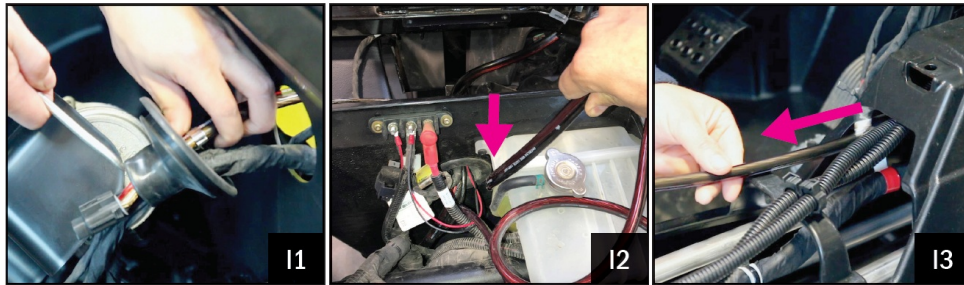
RUNNING WIRING AND CABLES



- Extract the (4) T40 surrounding the ride command system OR top-center dash compartment (for non-Ride Command vehicles) and (2) push pins found in the dash. Unclip the dash surrounding the glovebox. Once unclipped, gently pull the dash forward and remove the upper dash pocket.
- Extract the (1) T40 torx that secures the lower dash pocket. Disconnect the USB and unclip the LED from the lower dash pocket. Remove the lower dash pocket.



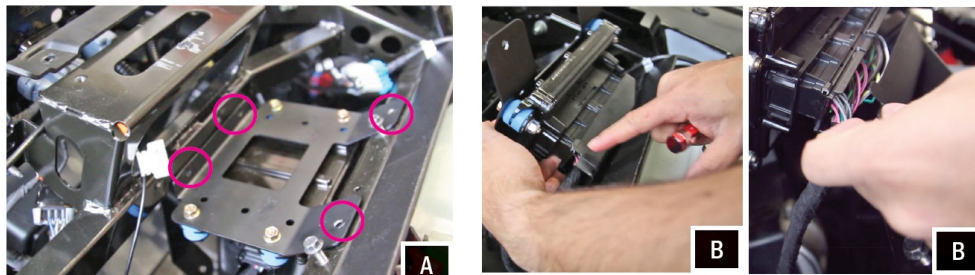
- Label / take photos of the harnesses connected to the dash. Once recorded, disconnect harnesses, and remove dash.
- Unwrap the tape and pull the rubber wire grommet out of the



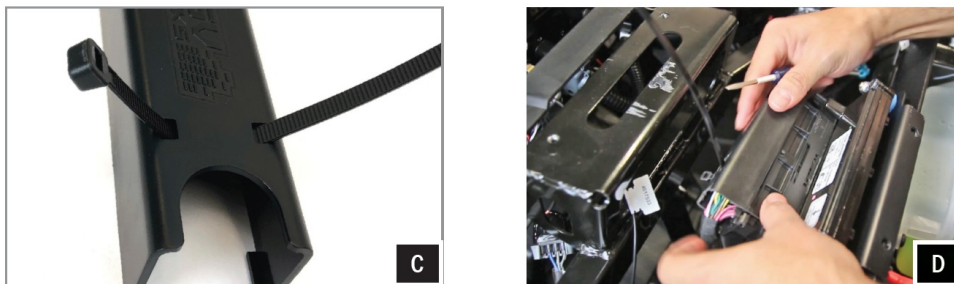
- Starting from under the hood compartment, feed the connector of the power wire and B-H1151 rear harness female connector through the grommet into the dash cavity. In order to connect to the amplifier in a later step, pull about 18" of the amp power wire and B-H1151 into the dash cavity (I1). Route the additional length of the (ring terminal end) power/ground wire and B-H1151 down the exterior of the firewall along the factory wiring (I2). Pull the power/ground wire through to the center of the vehicle to the battery compartment. DO NOT CONNECT TO THE BATTERY (I3). B-H1151 will be used later for the cage mount speakers

RUNNING WIRING AND CABLES

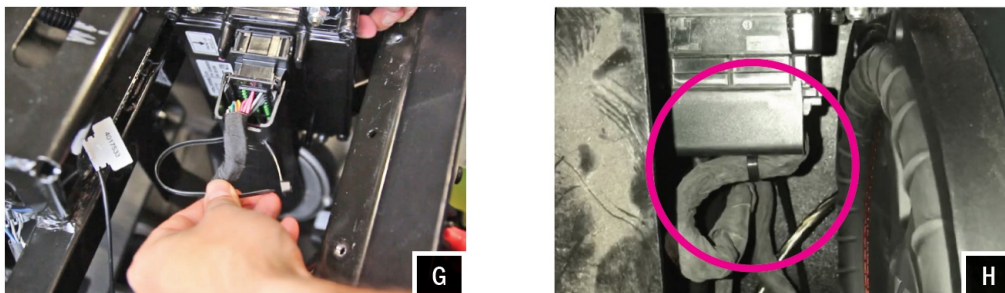
These following steps are needed to ensure clearance for the sub enclosure and allow proper performance for vehicles with Polaris Dynamix.



- Start by removing the four (4) 10mm bolts securing the Dynamix brain tray
- Tilt the brain back, unsnap the perimeter of the connector cover as it will be replaced by the provided cover that has a cable relief cut-out.



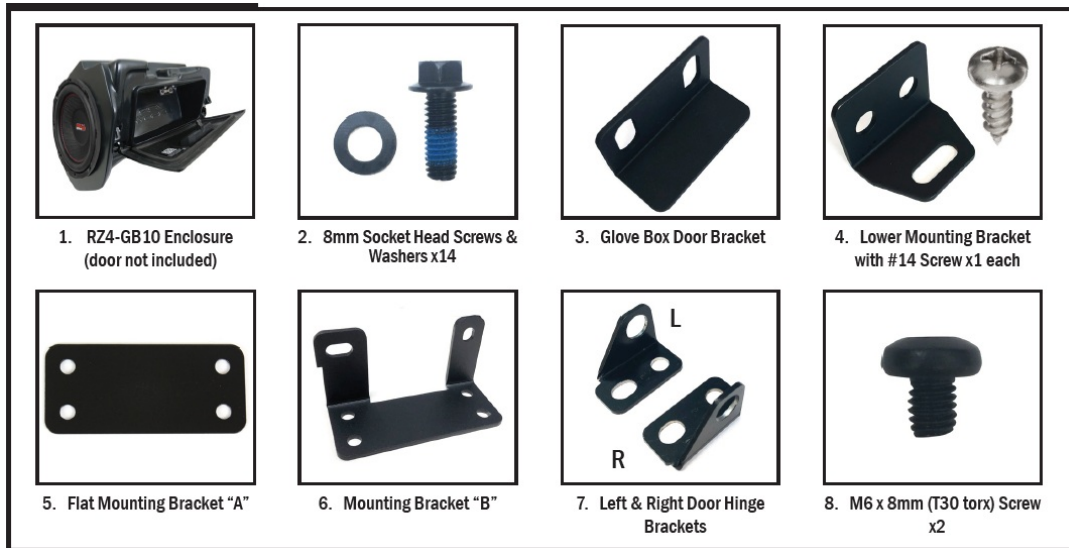
- Run a zip tie through the provided connector cover as shown in figure
- Snap the connector housing back into place over the



TOOLS NEEDED FOR INSTALLATION

- 10mm & 8mm Socket
- T-30 & T-40 Torx Driver
- #2 Phillips Screwdriver
- Ratchet & Extension
- #3 Phillips Screwdriver
- Panel removal tool

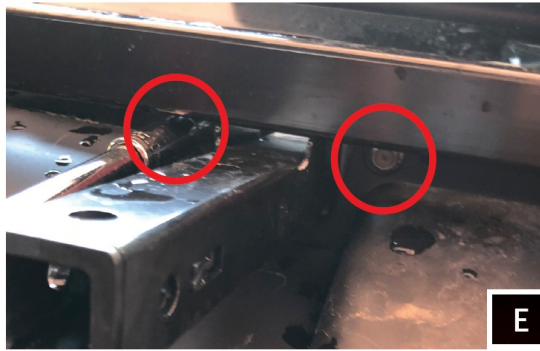
PARTS LIST IMAGES



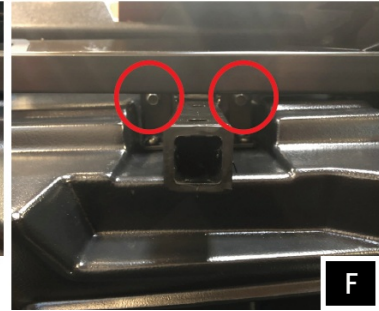
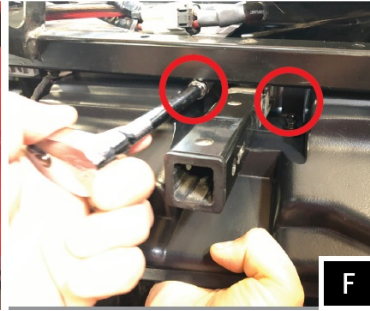
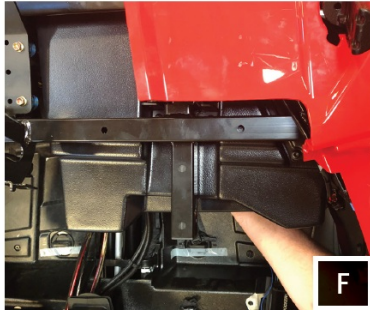
1. Using (4) 8mm screws and washers, attach Bracket "B" to the enclosure.
2. Install door latch onto enclosure with the provided (2) T30 M6x8mm screws.



3. Install lower mounting bracket onto enclosure with the provided
4. Install left and right door hinge brackets using (2) 8mm screws and washers for each side (2) 8mm screws and washers



5. With the dash removed, extract the (2) 10mm bolts retaining the glovebox and remove the



6. Lift the enclosure into Using the factory glove box mounting hardware, fasten the enclosure into place. Pull sub enclosure wiring towards the center of the vehicle to avoid being pinched by the chassis.



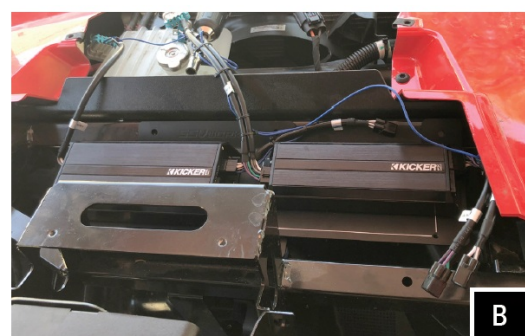
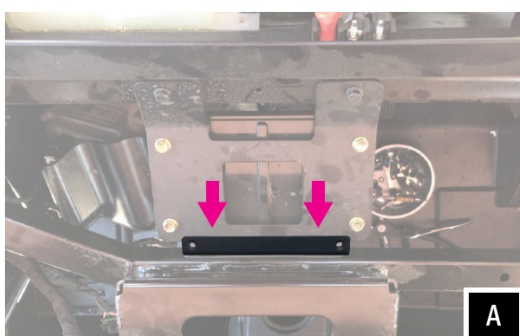
7. Place Bracket "A" into place towards the firewall, and fasten it into place with the (4) 8mm socket head screws and washers provided with the kit.

8. Fasten the provided #14 screw to secure the enclosure lower mounting bracket.

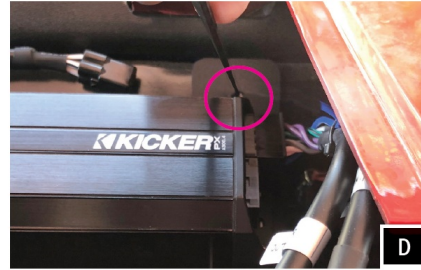
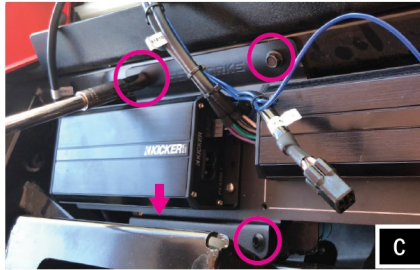


9. Attach the factory glovebox

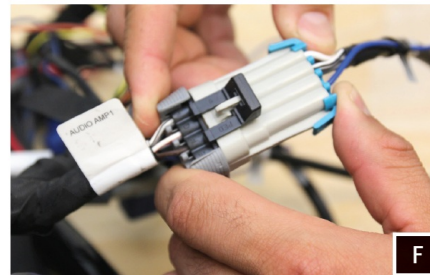
AMP TRAY INSTALLATION



1. Place the amp tray base bracket at the location of the (2) removed factory 10mm bolts. Re-fasten the bolts through both the amp tray base bracket and factory plate to secure to the
2. Place the amp tray into the mounting location by lining up the amp plate screw holes to the factory holes on the chassis.



3. Secure the amp tray by using the two (2) 10mm factory bolts at the top, and two (2) T-30 torx bolts at the bottom mounting locations.
4. Using a scribe or punch, mark the location of the needed pilot hole on the passenger side of the tray



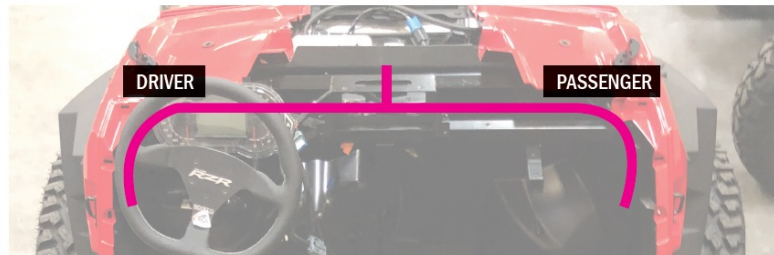
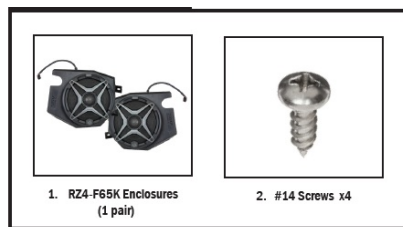
5. With the correct location marked, uninstall the amp tray and use a 13/64" drill bit to drill your pilot hole. With your pilot hole drilled, reinstall the amp tray. Use the self-tapping screw in the drilled hole location.
6. Connect the amplifier "Front Input" to the Ride Command "Audio Amp 1" factory harness. Connect the amplifier "Rear Input" for rear speakers to "Audio Amp 2" factory harness. Connect the 500.1 input for the subwoofer to "Audio Amp 3" factory harness.

Connect the 500.1 output to the RZ4-GB10 subwoofer

TOOLS NEEDED FOR INSTALLATION

- T-40 Torx Driver
- #2 Phillips Screwdriver

PARTS LIST IMAGES



Route the B-H1149 across the dash cavity. The cable marked as “DRIVER” will route under the dash and down to the driver side footwell, the cable marked “PASSENGER” will route over the top and down the right side of the RZ4-GB10 enclosure.



1. Starting at driver side footwell, remove the factory T40 torx screw as shown. Save this screw for Step D
2. Place the driver kick pod into location so that both vehicle screw bosses line up with kick pod brackets.



3. Using (2) #14 screw loosely secure the kick pod to the factory screw bosses.
4. Re-use the factory T40 torx screw previously removed in Step A to loosely bolt through the lower kick pod bracket to vehicle panel. Once all three screws are in place go back and re-tighten.

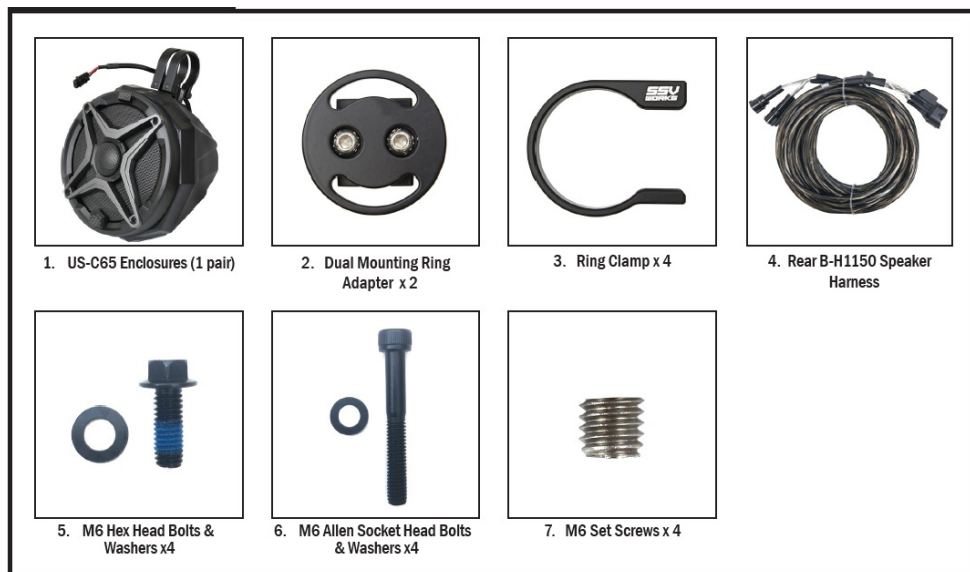


5. Connect the B-H1149 cable to the speaker pod and zip tie all cables to the frame.
6. Connect the B-H1149 speaker harness to the 300.4 amplifier front output.

TOOLS NEEDED FOR INSTALLATION

- 5mm Allen Key
- 8mm Open End Wrench

PARTS LIST IMAGES



INSTALLATION NOTES

It is recommended to wrap the bag that the clamps come in around the cage before you slide the clamp onto the cage to prevent scratching.



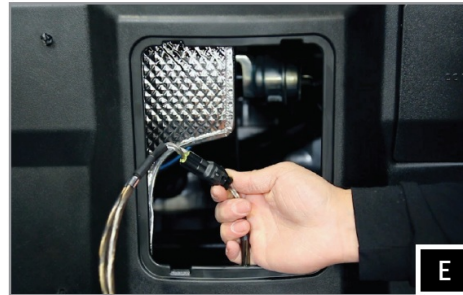
1. Find the best orientation for the speaker on your bar and screw in the Set Screws in the OPPOSITE holes of where the clamp will install into.
2. Loosely install the clamp base to the cage mount pod with the two (2) M6 hex head bolts and washers, place the cage mount pod in the desired mounting location on the Once the ring adapter is in the desired position, tighten the two (2) bolts using a 8mm open wrench.



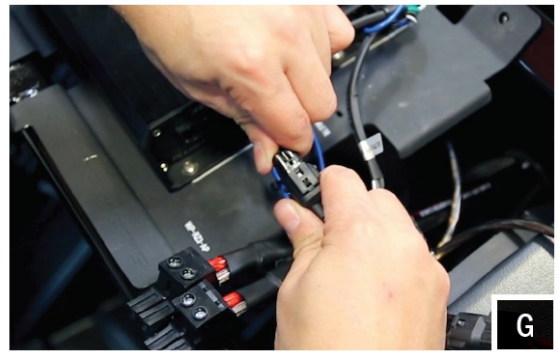
3. Place both ring mounting clamps on the cage using the plastic bag to prevent scratching, place the cage mount

pod in its final mounting location and secure to the clamps using the two (2) M6 allen socket head bolts and washers with a 5mm Allen key

PLACEMENT OF THE POD DEPENDS ON WHAT TYPE OF ROLL CAGE YOU HAVE (FACTORY OR AFTERMARKET) AND YOUR PREFERENCE OF WHERE YOU WANT THE PODS TO BE INSTALLED. IN THESE INSTRUCTIONS, WE HAVE INSTALLED THEM ON THE OUTSIDE VERTICAL BARS AT THE BACK OF THE ROLL CAGE.

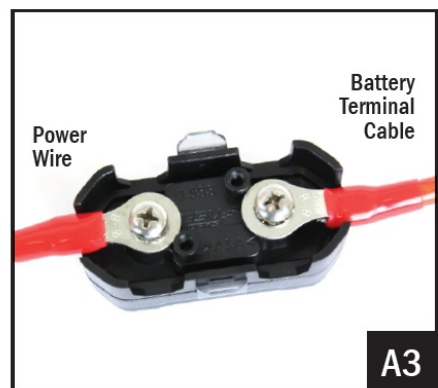
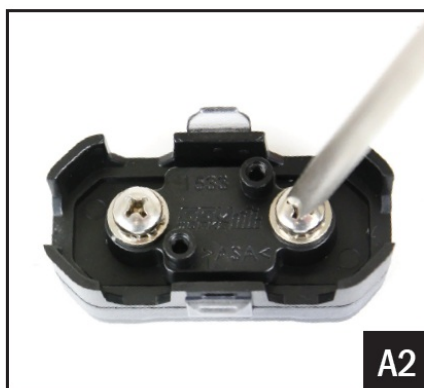
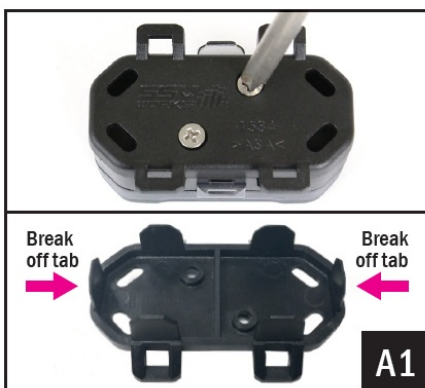


4. Position the speaker to your liking and tighten the hex head bolts by hand with a 8mm wrench.
5. Front the rear of the center console, connect the B-H1150 to the B-H1151. Then route the B-H1150 harness up to each speaker pod and connect.

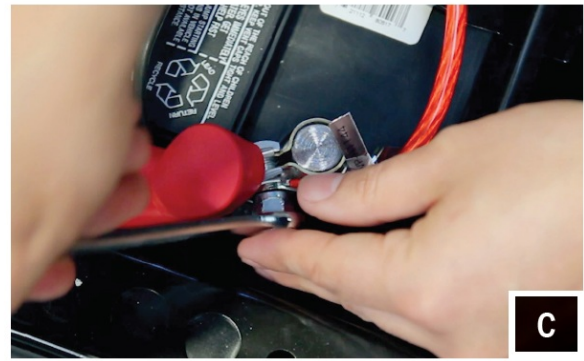


6. Route the speaker wire away from any moving parts and any sharp metal, then connect to the amplifier
7. Connect the B-H1151 speaker harness to the amplifier 300.4 rear output

CONNECTING POWER & GROUND CABLE T BATTERY



1. Remove the bottom cover of the fuse holder by extracting the 2 screws. Break off the right and left side tabs on the bottom cover
2. Extract both fuse holder screws.
3. Attach both the Power Wire and Battery Terminal Cable to the fuse holder. Reattach the bottom cover.



4. Unscrew the factory nut on the negative battery Install the 2 ground cables to the screw on the ground battery terminal. Re-install the factory nut.
5. Unscrew the factory nut on the positive battery Install the 2 power cables to the screw on the positive battery terminal. Re-install the factory nut.



6. Remove the top of the fuse holder and extract the 2 Insert the 40A fuse, screw the 2 screws back in and reattach the fuse holder top.
7. Zip tie all of the electrical cabling (factory and audio) along the center column away from the drive shaft

THIS CONCLUDES THE INSTALLATION PROCESS. REPLACE THE FACTORY PANELS AND SEATS.
 QUESTIONS? PLEASE CONTACT SSV WORKS AT 818-991-1778 OR EMAIL SUPPORT@SSVWORKS.COM


ANTENNA RELOCATION (IF EQUIPPED)





If your vehicle is equipped with a V2V antenna (Photo A) we recommend relocating antenna underneath the hood in front of the radiator (Photo C) to avoid amplifier interference

Documents / Resources

 <p>SSV WORKS</p> <p>RZ4-5ARC</p> <p>1000 cc (61 cu in) 4-Stroke Engine</p> <p>12V 100Ah Battery</p> <p>1000W 12V DC Motor</p> <p>1000W 12V DC Motor</p> <p>1000W 12V DC Motor</p> <p>1000W 12V DC Motor</p>	<p>SSV WORKS RZ4-5ARC RZR XP Turbo s 18+ with Ride Command SSV Works 5 Speaker Audio Kit [pdf] Instruction Manual</p> <p>RZ4-5ARC RZR XP Turbo s 18 with Ride Command SSV Works 5 Speaker Audio Kit, RZ4-5ARC, RZR XP Turbo s 18 with Ride Command SSV Works 5 Speaker Audio Kit, Ride Command SSV Works 5 Speaker Audio Kit, Speaker Audio Kit, Audio Kit</p>
---	--